

BARTON & LOGUIDICE

ADDENDUM NO. 1
TO
CONTRACT DOCUMENTS
AND
SPECIFICATIONS
FOR
TOWN OF VESTAL
MEMORIAL POOL RENOVATIONS PROJECT

CONTRACT NO. 1 – GENERAL CONSTRUCTION
CONTRACT NO. 2 – MECHANICAL CONSTRUCTION
CONTRACT NO. 3 – PLUMBING CONSTRUCTION
CONTRACT NO. 4 – ELECTRICAL CONSTRUCTION

1. Reference: SPECIFICATION SECTION 32 31 13 – CHAIN LINK FENCES AND GATES
 - a. Page 5, Article 2.08, Subparagraphs A.4. and A.5., DELETE in its entirety, and SUBSTITUTE THEREFOR:

“4. Line Posts: 4-inch Schedule 40 steel pipe, per ASTM B36.10.
5. End, corner, pull posts: 3-inch Schedule 80 pipe, per ANSI B36.10.”
2. Reference: CONTRACT DRAWINGS – SHEET C001 – OVERALL SITE REFERENCE PLAN
 - a. ADD the following note to the “PIPE BURSTING NOTES”:

“5. ALL WORK ASSOCIATED WITH THE NEW MANHOLE AND SEWER PIPE LATERAL REPLACEMENT SHALL BE PERFORMED AS SOON AS POSSIBLE AFTER CONTRACTOR’S NOTICE TO PROCEED, AND SHALL BE COMPLETED NO LATER THAN AUGUST 28, 2023.”
3. Reference: CONTRACT DRAWINGS – SHEET C201 – POOL ENLARGEMENT PLAN
 - a. DELETE Sheet C201 in its entirety and SUBSTITUTE THEREFOR Sheet C201R, as attached to this Addendum No. 1.
4. Reference: CONTRACT DRAWINGS – SHEET D101 – POOL SITE UTILITY PLAN
 - a. Under Basis of Design on Pump Schedule DELETE “HERBORNER F-N” in its entirety and SUBSTITUTE THEREFOR “HERBORNER MODEL FN065-270C-1004N”.\
 - b. Section 18, DELETE in its entirety, and SUBSTITUTE THEREFOR, Section 18 on Sketch D-SK01, as attached to this Addendum No. 1.
 - c. ADD 1-1/2-inch filtered water line and 3/8-inch orifice inlet fittings at 3’-0” on center along center wall of zero entry area as indicated on Sketch D-SK02.

5. Reference: CONTRACT DRAWINGS – SHEET A201 – POOL HOUSE – ELEVATIONS
- a. DELETE note “CONCEALED FASTENER METAL WALL PANEL SYSTEM, TYPE: “MASTERLINE 16” AS MFGR.’D BY “MBCI” (OR APPROVED EQUAL) INSTALL AS RECOMMENDED BY MFGR., COLOR TO BE SELECTED BY OWNER, INSTALL OVER MOISTURE/VAPOR BARRIER” at all locations and SUBSTITUTE THEREFOR “CONCEALED FASTENER METAL WALL PANEL SYSTEM, TYPE: "FW-120 PANEL" AS MFGR.'D BY "MBCI" (OR APPROVED EQUAL) INSTALL 12" PANEL W/ (1) - BEAD AS RECOMMENDED BY MFGR., COLOR TO BE SELECTED BY OWNER, INSTALL OVER MOISTURE/VAPOR BARRIER”
6. Reference: CONTRACT DRAWINGS – SHEET A600 – SCHEDULES AND DETAILS
- a. DELETE Sheet A600 in its entirety and SUBSTITUTE THEREFOR Sheet A600R, as attached to this Addendum No. 1.
7. Reference: CONTRACT DRAWINGS – SHEET P001 – SYMBOL AND ABBREVIATIONS
- a. DELETE “WATER ENTRANCE DETAIL” in its entirety, and SUBSTITUTE THEREFOR Water Entrance Detail on Sketch P-SK01, as attached to this Addendum No. 1.
8. Reference: CONTRACT DRAWINGS – SHEET E102 – POOL HOUSE – POWER PLANS
- a. ADD one exterior receptacle on the exterior wall between the First Air (Room 109) and Office 2 (Room 110). The receptacle shall be rated 120V, 20A, and shall be GFCI, WR, TR, and WP in use. Furnish and install (2)#12, (1)#12G conductors in ¾”C. The receptacle shall be connected to circuit 23 of panelboard MDP.

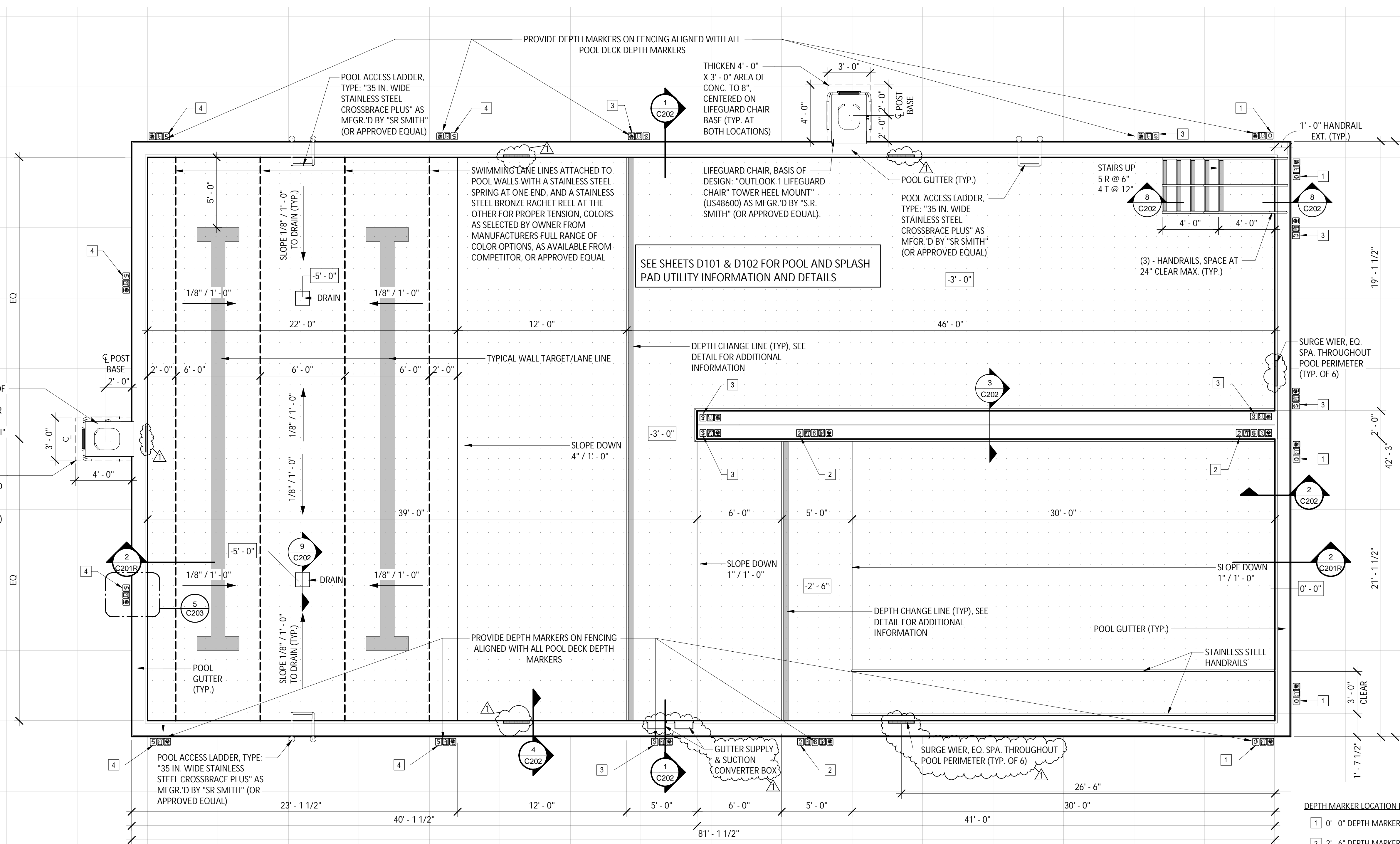
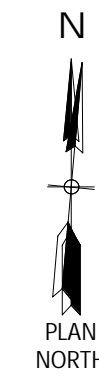
BARTON & LOGUIDICE, D.P.C.



Matthew C. Fuller, P.E.
Vice President

/jms

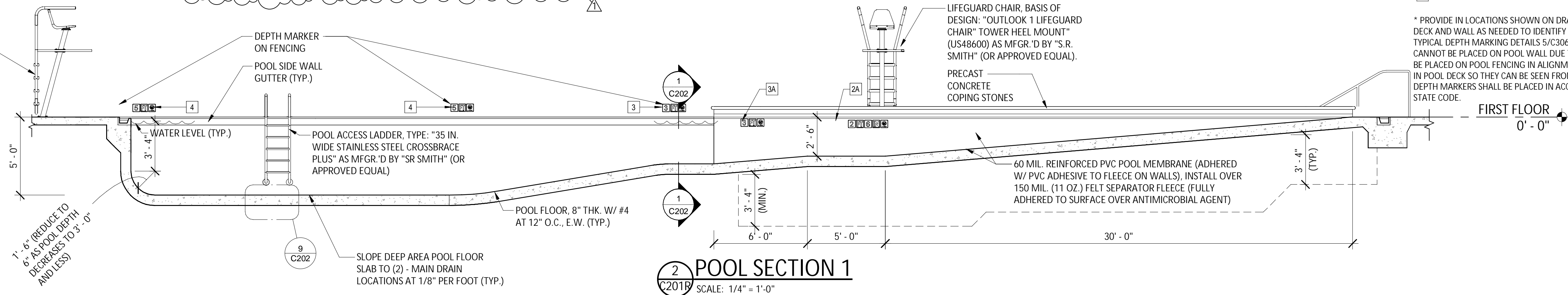
Attachments



ENLARGED POOL PLAN
SCALE: 1/4" = 1'-0"

- DEPTH MARKER LOCATION LEGEND***
- 1 0'-0" DEPTH MARKER LOCATION
 - 2 2'-6" DEPTH MARKER LOCATION
 - 3 3'-0" DEPTH MARKER LOCATION
 - 4 5'-0" DEPTH MARKER LOCATION

* PROVIDE IN LOCATIONS SHOWN ON DRAWINGS ON BOTH POOL DECK AND WALL AS NEEDED TO IDENTIFY DEPTH CHANGES. SEE TYPICAL DEPTH MARKING DETAILS 5/C306. WHERE DEPTH MARKERS CANNOT BE PLACED ON POOL WALL DUE TO GUTTER MARKERS SHALL BE PLACED ON POOL FENCING IN ALIGNMENT WITH DEPTH MARKERS IN POOL DECK SO THEY CAN BE SEEN FROM WITHIN THE POOL. DEPTH MARKERS SHALL BE PLACED IN ACCORDANCE WITH NEW YORK STATE CODE.



POOL SECTION 1
SCALE: 1/4" = 1'-0"

POOL WALLS NOTES:

- POOL WALLS SHALL BE VERTICAL FOR A DISTANCE OF AT LEAST THREE FEET BELOW THE WATER LEVEL, AND RADIUS SHALL NOT BE GREATER THAN THAT 3'-0", OR:
- RADIUS BELOW VERTICAL WALL SHALL NOT BE GREATER THAN THE DIFFERENCE BETWEEN THE DEPTH AT THAT POINT AND THREE FEET

IT IS A VIOLATION OF THE NEW YORK STATE EDUCATION LAW, ARTICLE 145 §7209 SPECIAL PROVISIONS, FOR ANY PERSON, UNLESS THEY ARE ACTING UNDER THE DIRECTION OF A LICENSED PROFESSIONAL ENGINEER, ARCHITECT, LANDSCAPE ARCHITECT, OR LAND SURVEYOR, TO ALTER AN ITEM IN ANY WAY, IF AN ITEM BEARING THE STAMP OF A LICENSED PROFESSIONAL IS ALTERED, THE ALTERING PROFESSIONAL SHALL STAMP THE DOCUMENT AND INCLUDE THE NOTATION "ALTERED BY" FOLLOWED BY THEIR SIGNATURE, THE DATE OF SUCH ALTERATION, AND A SPECIFIC DESCRIPTION OF THE ALTERATION.

REVISIONS	
1	ADDENDUM NO. 1

TOWN OF VESTAL
MEMORIAL POOL RENOVATIONS PROJECT
CONTRACT NO 1A - GENERAL CONSTRUCTION

POOL ENLARGEMENT PLAN AND SECTION

BROOME COUNTY, NEW YORK

TOWN OF VESTAL

B&L

443 Electronics Parkway
Liverpool, NY
13088

NYS CERT. OF AUTH.: 0018246
Barton & Loguidice, D.P.C.



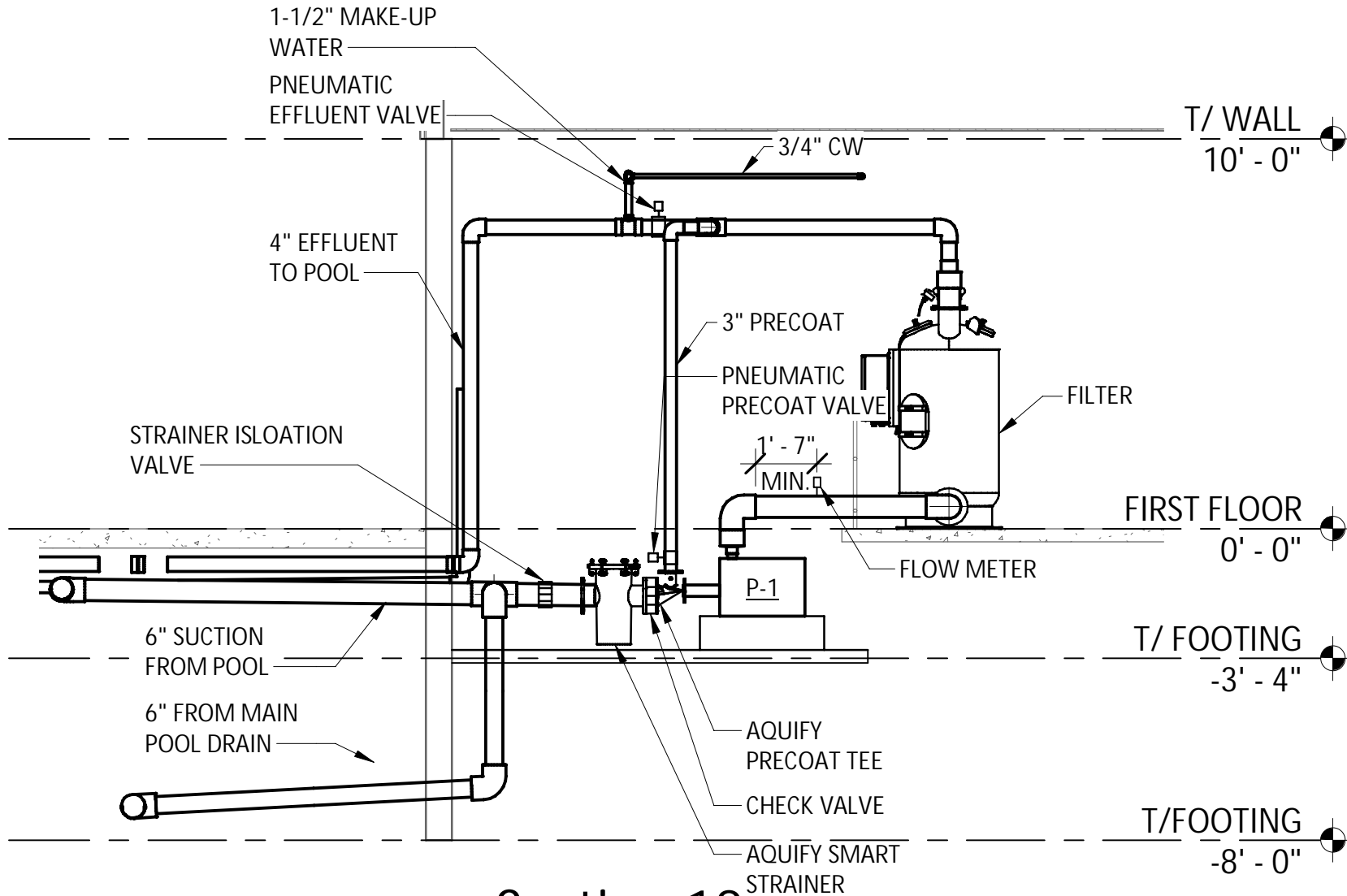
MATTHEW C. FULLER, P.E.
LICENSE NO. 070743 EXP. 05/31/2023

Date: MAY, 2023

Scale: AS SHOWN

Sheet Number: **C201R**

Project Number: 409.005.001



Section 18

SCALE: 1/4" = 1'-0"

**Barton
& Loguidice**

Date
05/31/23

Scale
AS SHOWN

TOWN OF VESTAL
MEMORIAL POOL RENOVATIONS PROJECT

POOL SITE UTILITY DETAILS

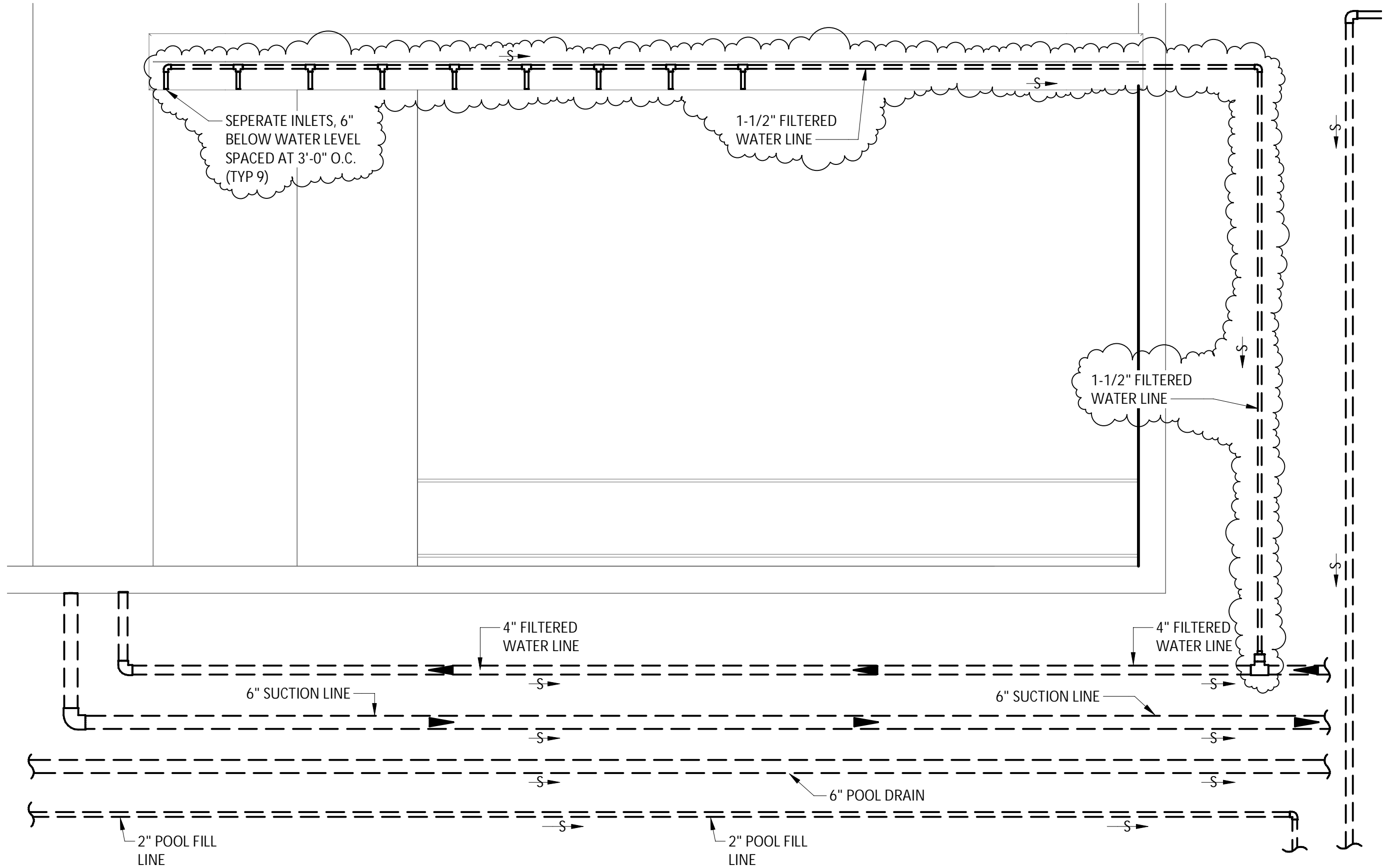
TOWN OF VESTAL

BROOME COUNTY, NEW YORK

Figure Number
D-SK01

Project Number
409.005.001

Plotted: 5/31/2023 2:35:25 PM
C:\Users\rdrad\Documents\6. Vestal Pool Central File - Contract Drawings - 1_9_2023_rdradin.rvt



PARTIAL POOL SITE UTILITY PLAN

SCALE: 1/4" = 1'-0"

TOWN OF VESTAL
MEMORIAL POOL RENOVATIONS PROJECT
PARTIAL POOL SITE UTILITY PLAN

Barton & Loguidice

Date
05/31/23

Scale
AS SHOWN

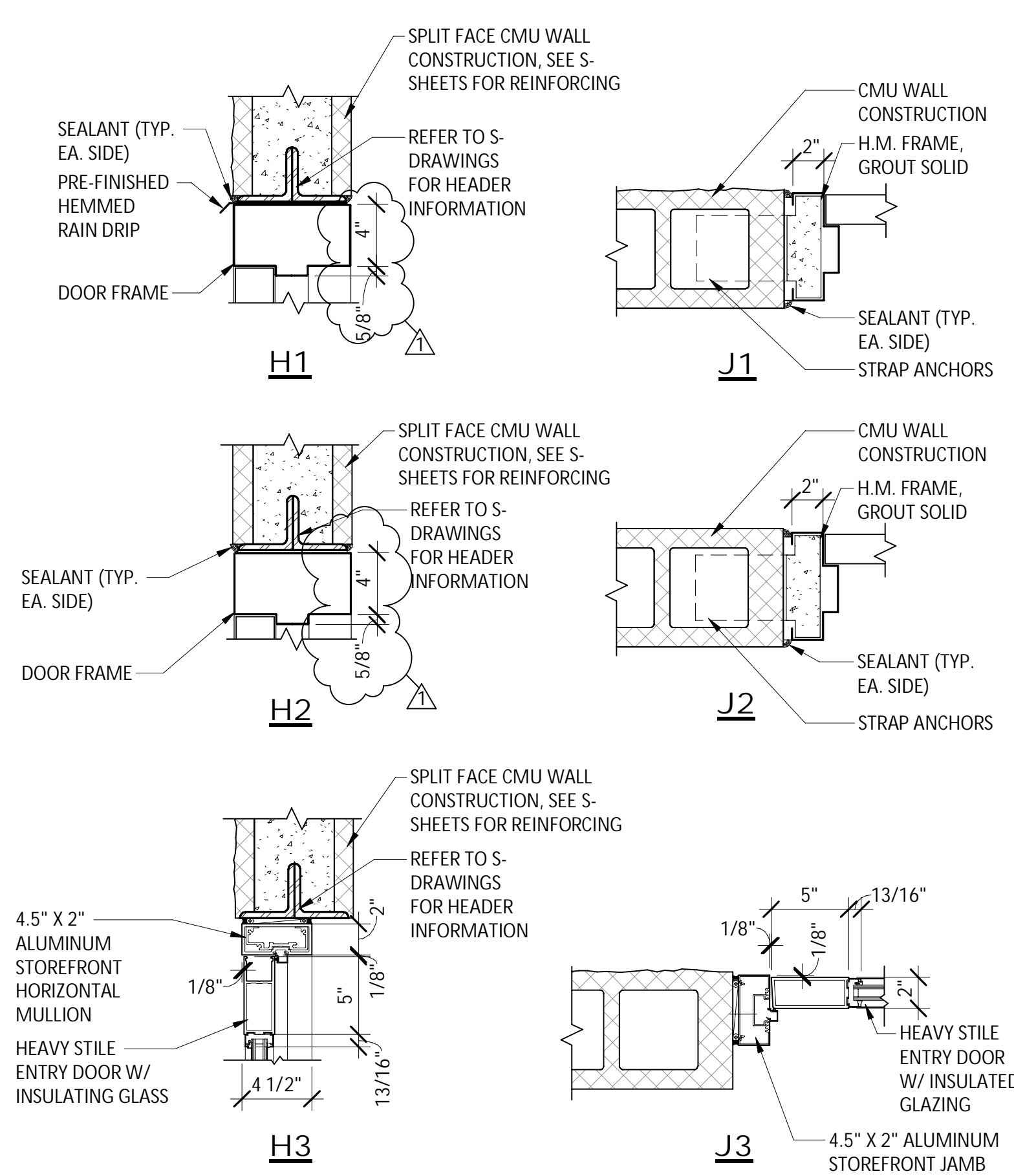
Figure Number
D-SK02

Project Number
409.005.001

BROOME COUNTY, NEW YORK

TOWN OF VESTAL

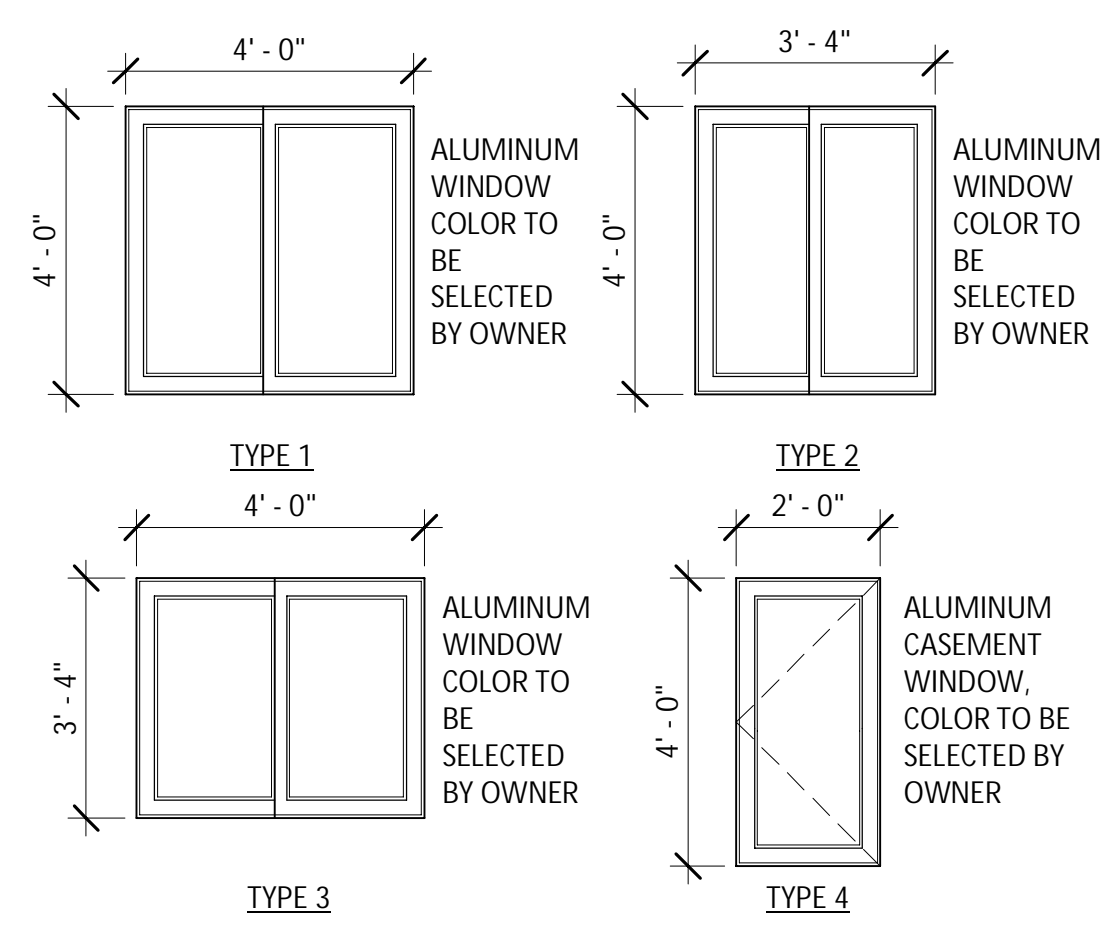
DOOR NUMBER	DOOR					FRAME					COMMENTS	
	TYPE	WIDTH	HEIGHT	MATERIAL	FINISH	HARDWARE	TYPE	MATERIAL	FINISH	JAMB		HEAD
101	A	6'-0"	7'-0"	ALUMINUM	FACTORY	HW-1	1	ALUMINUM	FACTORY	J3	H3	
102	B	3'-0"	7'-0"	HOLLOW METAL (GALVANZIED)	SHOP PRIMED AND FIELD PAINT FINISH	HW-2	2	HOLLOW METAL (GALVANZIED)	SHOP PRIMED AND FIELD PAINTED	J2	H2	
103	B	3'-0"	7'-0"	HOLLOW METAL (GALVANZIED)	SHOP PRIMED AND FIELD PAINT FINISH	HW-2	2	HOLLOW METAL (GALVANZIED)	SHOP PRIMED AND FIELD PAINTED	J2	H2	
104	C	3'-0"	7'-0"	HOLLOW METAL (GALVANZIED)	SHOP PRIMED AND FIELD PAINT FINISH	HW-3	2	HOLLOW METAL (GALVANZIED)	SHOP PRIMED AND FIELD PAINTED	J2	H2	
105	B	3'-0"	7'-0"	HOLLOW METAL (GALVANZIED)	SHOP PRIMED AND FIELD PAINT FINISH	HW-4	2	HOLLOW METAL (GALVANZIED)	SHOP PRIMED AND FIELD PAINTED	J2	H2	
106	B	3'-0"	7'-0"	HOLLOW METAL (GALVANZIED)	SHOP PRIMED AND FIELD PAINT FINISH	HW-4	2	HOLLOW METAL (GALVANZIED)	SHOP PRIMED AND FIELD PAINTED	J2	H2	
107	B	3'-0"	7'-0"	HOLLOW METAL (GALVANZIED)	SHOP PRIMED AND FIELD PAINT FINISH	HW-2	2	HOLLOW METAL (GALVANZIED)	SHOP PRIMED AND FIELD PAINTED	J2	H2	
108	B	3'-0"	7'-0"	HOLLOW METAL (GALVANZIED)	SHOP PRIMED AND FIELD PAINT FINISH	HW-2	2	HOLLOW METAL (GALVANZIED)	SHOP PRIMED AND FIELD PAINTED	J2	H2	
109	B	3'-0"	7'-0"	HOLLOW METAL (GALVANZIED)	SHOP PRIMED AND FIELD PAINT FINISH	HW-5	2	HOLLOW METAL (GALVANZIED)	SHOP PRIMED AND FIELD PAINTED	J1	H1	
110	B	3'-0"	7'-0"	HOLLOW METAL (GALVANZIED)	SHOP PRIMED AND FIELD PAINT FINISH	HW-5	2	HOLLOW METAL (GALVANZIED)	SHOP PRIMED AND FIELD PAINTED	J1	H1	
111	B	3'-0"	7'-0"	HOLLOW METAL (GALVANZIED)	SHOP PRIMED AND FIELD PAINT FINISH	HW-6	2	HOLLOW METAL (GALVANZIED)	SHOP PRIMED AND FIELD PAINTED	J1	H1	
112	C	3'-0"	7'-0"	HOLLOW METAL (GALVANZIED)	SHOP PRIMED AND FIELD PAINT FINISH	HW-3	2	HOLLOW METAL (GALVANZIED)	SHOP PRIMED AND FIELD PAINTED	J1	H1	
113	B	3'-0"	7'-0"	HOLLOW METAL (GALVANZIED)	SHOP PRIMED AND FIELD PAINT FINISH	HW-6	2	HOLLOW METAL (GALVANZIED)	SHOP PRIMED AND FIELD PAINTED	J1	H1	
114	B	3'-0"	7'-0"	HOLLOW METAL (GALVANZIED)	SHOP PRIMED AND FIELD PAINT FINISH	HW-6	2	HOLLOW METAL (GALVANZIED)	SHOP PRIMED AND FIELD PAINTED	J1	H1	
115	B	3'-0"	7'-0"	HOLLOW METAL (GALVANZIED)	SHOP PRIMED AND FIELD PAINT FINISH	HW-6	2	HOLLOW METAL (GALVANZIED)	SHOP PRIMED AND FIELD PAINTED	J1	H1	
116	D	8'-0"	8'-0"	STEEL	FACTORY	-	-	-	-	-	-	
117	D	8'-0"	8'-0"	STEEL	FACTORY	-	-	-	-	-	-	
118	B	3'-0"	7'-0"	HOLLOW METAL (GALVANZIED)	SHOP PRIMED AND FIELD PAINT FINISH	HW-6	2	HOLLOW METAL (GALVANZIED)	SHOP PRIMED AND FIELD PAINTED	J1	H1	
119	B	2'-0"	7'-0"	HOLLOW METAL (GALVANZIED)	SHOP PRIMED AND FIELD PAINT FINISH	HW-7	2	HOLLOW METAL (GALVANZIED)	SHOP PRIMED AND FIELD PAINTED	J2	H2	
120	B	3'-0"	7'-0"	HOLLOW METAL (GALVANZIED)	SHOP PRIMED AND FIELD PAINT FINISH	HW-3	2	HOLLOW METAL (GALVANZIED)	SHOP PRIMED AND FIELD PAINTED	J2	H2	



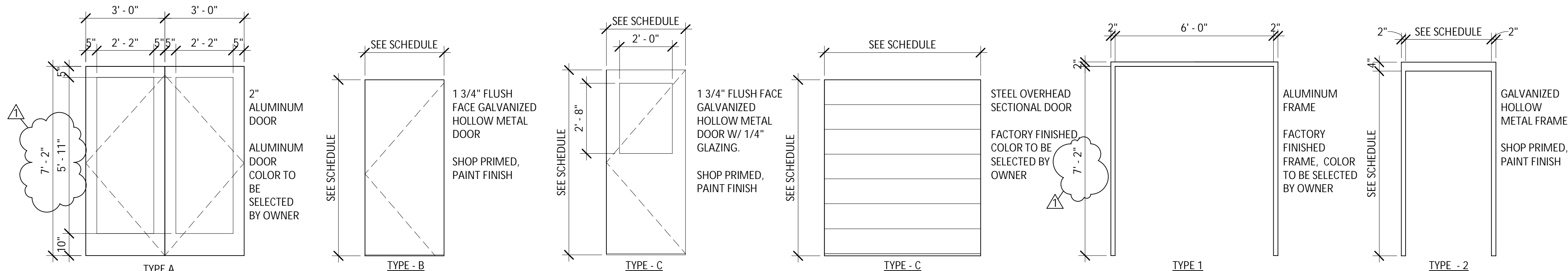
DOOR HEAD & JAMB DETAILS
NOT TO SCALE

ROOM NUMBER	NAME	FLOOR FINISH	BASE	WALL FINISH					CEILING FINISH		COMMENTS
				NORTH	EAST	SOUTH	WEST	TRIM	FINISH	HEIGHT	
101	VESTIBULE	"RECDECK" PVC FLOORING MEMBRANE	EXTEND FLOOR FINISH UP 8"	PAINT FINISH	PAINT FINISH	PAINT FINISH	PAINT FINISH	1X4 PVC	TRUSSCORE TONGUE & GROOVE CEILING PANELS (16" PANEL WIDTHS)	10' - 3"	
102	MENS CHANGING	"RECDECK" PVC FLOORING MEMBRANE	EXTEND FLOOR FINISH UP 8"	PAINT FINISH	PAINT FINISH	PAINT FINISH	PAINT FINISH	1X4 PVC	TRUSSCORE TONGUE & GROOVE CEILING PANELS (16" PANEL WIDTHS)	10' - 3"	
103	MENS BATHROOM	"RECDECK" PVC FLOORING MEMBRANE	EXTEND FLOOR FINISH UP 8"	PAINT FINISH	PAINT FINISH	PAINT FINISH	PAINT FINISH	1X4 PVC	TRUSSCORE TONGUE & GROOVE CEILING PANELS (16" PANEL WIDTHS)	10' - 3"	
104	WOMENS CHANGING	"RECDECK" PVC FLOORING MEMBRANE	EXTEND FLOOR FINISH UP 8"	PAINT FINISH	PAINT FINISH	PAINT FINISH	PAINT FINISH	1X4 PVC	TRUSSCORE TONGUE & GROOVE CEILING PANELS (16" PANEL WIDTHS)	10' - 3"	
105	WOMENS BATHROOM	"RECDECK" PVC FLOORING MEMBRANE	EXTEND FLOOR FINISH UP 8"	PAINT FINISH	PAINT FINISH	PAINT FINISH	PAINT FINISH	1X4 PVC	TRUSSCORE TONGUE & GROOVE CEILING PANELS (16" PANEL WIDTHS)	10' - 3"	
106	ALL GENDER/FAMILY BATHROOM	"RECDECK" PVC FLOORING MEMBRANE	EXTEND FLOOR FINISH UP 8"	PAINT FINISH	PAINT FINISH (CMU), FRP - COLOR TO BE SELECTED BY OWNER	PAINT FINISH	PAINT FINISH	1X4 PVC	TRUSSCORE TONGUE & GROOVE CEILING PANELS (16" PANEL WIDTHS)	10' - 3"	
107	ALL GENDER/FAMILY BATHROOM	"RECDECK" PVC FLOORING MEMBRANE	EXTEND FLOOR FINISH UP 8"	PAINT FINISH (CMU), FRP - COLOR TO BE SELECTED BY OWNER	PAINT FINISH	PAINT FINISH	PAINT FINISH	1X4 PVC	TRUSSCORE TONGUE & GROOVE CEILING PANELS (16" PANEL WIDTHS)	10' - 3"	
108	OFFICE 1	"RECDECK" PVC FLOORING MEMBRANE	EXTEND FLOOR FINISH UP 8"	PAINT FINISH	PAINT FINISH	PAINT FINISH	PAINT FINISH	1X4 PVC	TRUSSCORE TONGUE & GROOVE CEILING PANELS (16" PANEL WIDTHS)	10' - 3"	
109	FIRST AID	"RECDECK" PVC FLOORING MEMBRANE	EXTEND FLOOR FINISH UP 8"	PAINT FINISH	PAINT FINISH	PAINT FINISH	PAINT FINISH	1X4 PVC	TRUSSCORE TONGUE & GROOVE CEILING PANELS (16" PANEL WIDTHS)	10' - 3"	
109A	PLUMBING	"RECDECK" PVC FLOORING MEMBRANE	EXTEND FLOOR FINISH UP 8"	PAINT FINISH	PAINT FINISH	PAINT FINISH	PAINT FINISH	1X4 PVC	TRUSSCORE TONGUE & GROOVE CEILING PANELS (16" PANEL WIDTHS)	10' - 3"	
110	OFFICE 2	"RECDECK" PVC FLOORING MEMBRANE	EXTEND FLOOR FINISH UP 8"	PAINT FINISH	PAINT FINISH	PAINT FINISH	PAINT FINISH	1X4 PVC	TRUSSCORE TONGUE & GROOVE CEILING PANELS (16" PANEL WIDTHS)	10' - 3"	
111	HALL	"RECDECK" PVC FLOORING MEMBRANE	EXTEND FLOOR FINISH UP 8"	PAINT FINISH	PAINT FINISH	PAINT FINISH	PAINT FINISH	1X4 PVC	TRUSSCORE TONGUE & GROOVE CEILING PANELS (16" PANEL WIDTHS)	10' - 3"	
112	POOL STORAGE	-	-	PAINT FINISH	PAINT FINISH	PAINT FINISH	PAINT FINISH	1X4 PVC	TRUSSCORE TONGUE & GROOVE CEILING PANELS (16" PANEL WIDTHS)	10' - 3"	
113	VALVE ROOM	-	-	PAINT FINISH	PAINT FINISH	PAINT FINISH	PAINT FINISH	1X4 PVC	TRUSSCORE TONGUE & GROOVE CEILING PANELS (16" PANEL WIDTHS)	10' - 3"	
114	POOL EQUIPMENT BUILDING	-	-	PAINT FINISH	PAINT FINISH	PAINT FINISH	PAINT FINISH	1X4 PVC	TRUSSCORE TONGUE & GROOVE CEILING PANELS (16" PANEL WIDTHS)	10' - 3"	

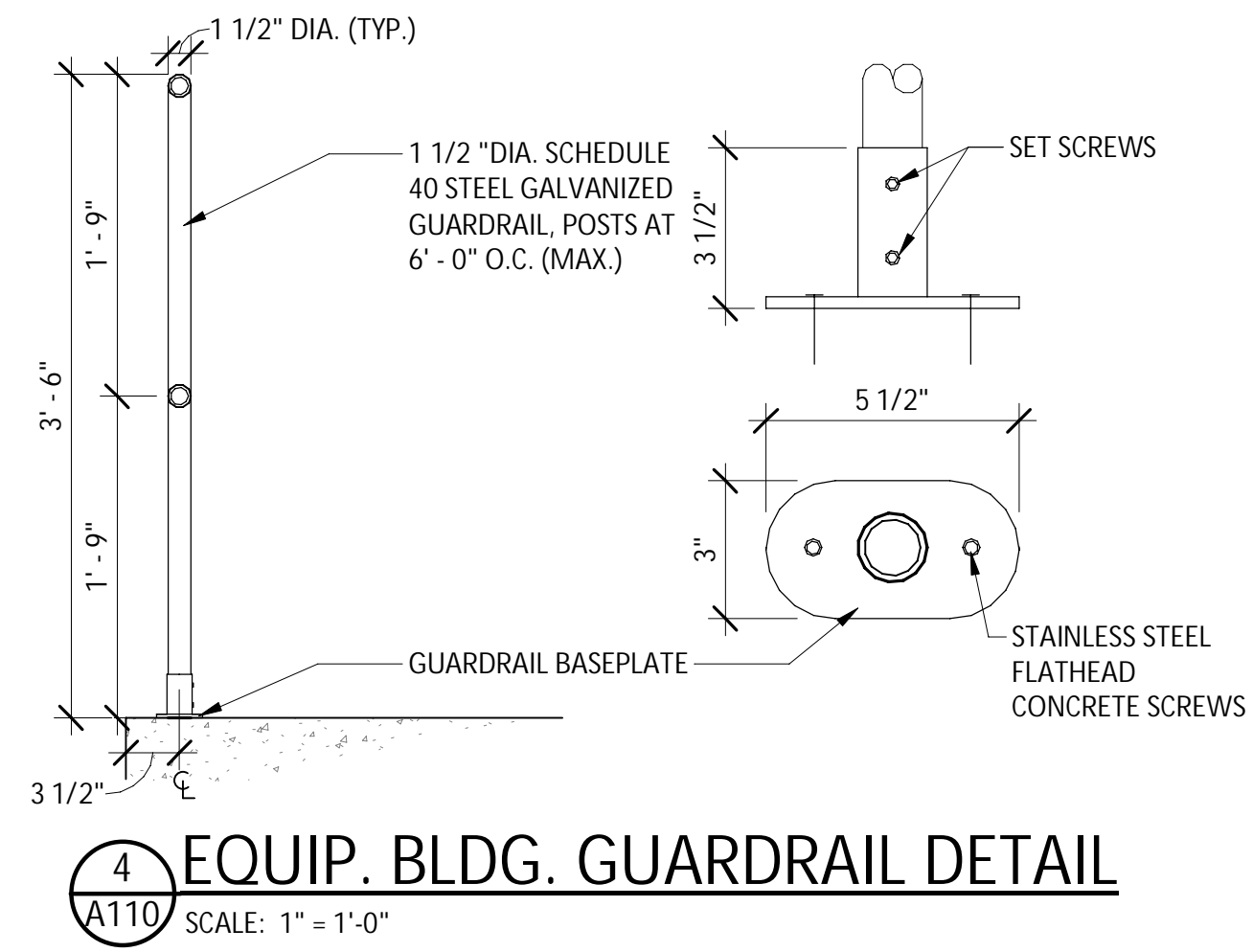
WINDOW SCHEDULE									
MARK	WINDOW TYPE	TYPE	COUNT	WIDTH	HEIGHT	SILL HEIGHT	MATERIAL	FINISH	
01	1	ALUMINUM SLIDER	2	4'-0"	4'-0"	3'-4"	ALUMINUM	FACTORY FINISH - COLOR TO BE SELECTED BY OWNER	
02	2	ALUMINUM SLIDER	1	3'-4"	4'-0"	2'-8"	ALUMINUM	FACTORY FINISH - COLOR TO BE SELECTED BY OWNER	
03	3	ALUMINUM SLIDER	1	4'-0"	3'-4"	4'-0"	ALUMINUM	FACTORY FINISH - COLOR TO BE SELECTED BY OWNER	
04	4	ALUMINUM CASEMENT	1	2'-0"	4'-0"	3'-4"	ALUMINUM	FACTORY FINISH - COLOR TO BE SELECTED BY OWNER	



WINDOW TYPES
NOT TO SCALE



DOOR AND FRAME TYPES
NOT TO SCALE



IT IS A VIOLATION OF THE NEW YORK STATE EDUCATION LAW, ARTICLE 145 §7209 SPECIAL PROVISIONS, FOR ANY PERSON, UNLESS THEY ARE ACTING UNDER THE DIRECTION OF A LICENSED PROFESSIONAL ENGINEER, ARCHITECT, LANDSCAPE ARCHITECT, OR LAND SURVEYOR, TO ALTER AN ITEM IN ANY WAY, IF AN ITEM BEARING THE STAMP OF A LICENSED PROFESSIONAL IS ALTERED, THE ALTERING PROFESSIONAL SHALL STAMP THE DOCUMENT AND INCLUDE THE NOTATION "ALTERED BY" FOLLOWED BY THEIR SIGNATURE, THE DATE OF SUCH ALTERATION, AND A SPECIFIC DESCRIPTION OF THE ALTERATION.

REVISIONS	
Δ	ADDENDUM NO. 1

TOWN OF VESTAL
MEMORIAL POOL RENOVATIONS PROJECT
CONTRACT NO 1A - GENERAL CONSTRUCTION

SCHEDULES AND DETAILS

BROOME COUNTY, NEW YORK

TOWN OF VESTAL

B&L

443 Electronics Parkway
Liverpool, NY
13088

NYS CERT. OF AUTH.: 0018246
Barton & Loguidice, D.P.C.

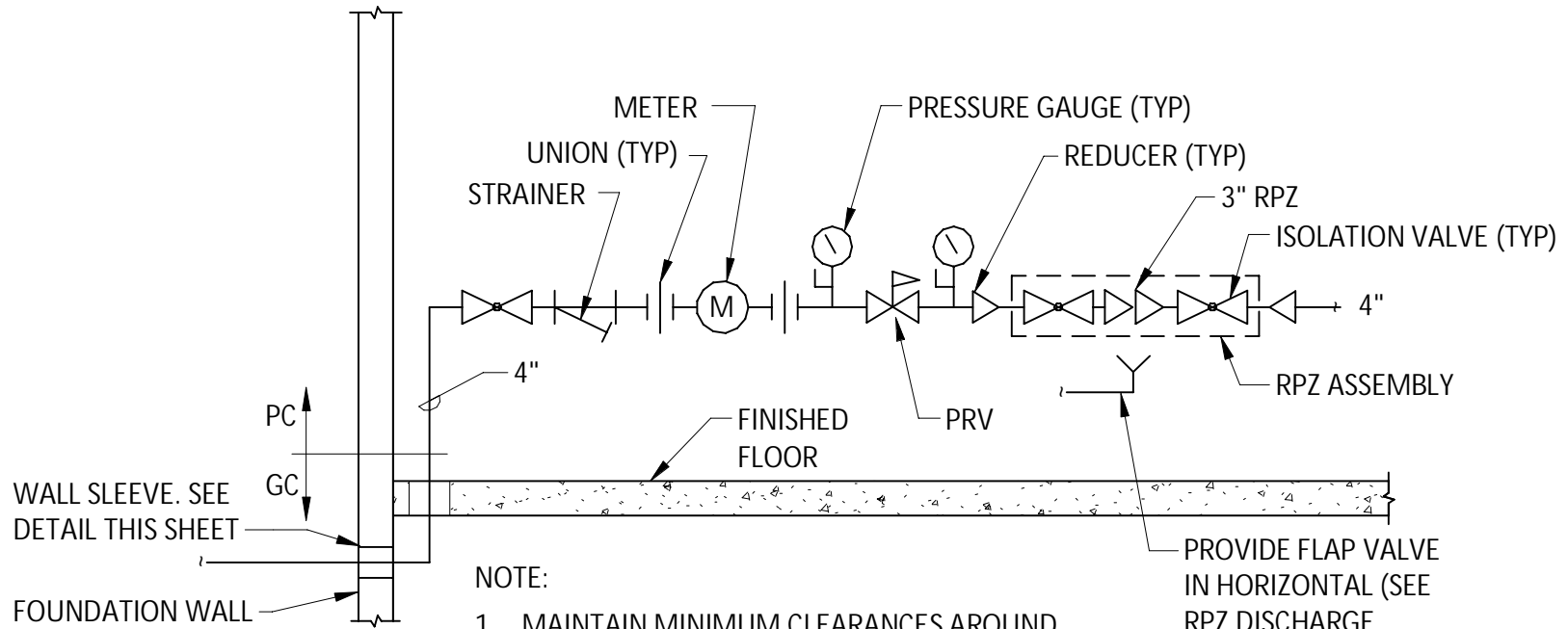
STATE OF NEW YORK
BARTON & LOGUIDICE, D.P.C.
070743
LICENSE NO. 070743 EXP. 05/31/2023

MATTHEW C. FULLER, P.E.
Date: **MAY, 2023**

Scale: **AS SHOWN**

Sheet Number: **A600R**

Project Number: **409.005.001**



NOTE:

1. MAINTAIN MINIMUM CLEARANCES AROUND BACKFLOW PREVENTER ASSEMBLY 30" IN FRONT, 8" BEHIND, 24" ABOVE AND 18" MINIMUM BETWEEN BOTTOM OF RELIEF VALVE AND THE FLOOR. INSTALL BACKFLOW PREVENTER WITH A CENTERLINE HEIGHT OF A MINIMUM 30" AND A MAXIMUM OF 60" ABOVE FINISHED FLOOR.
2. GENERAL CONTRATOR TO TO EXTEND 4" UP THROUGH POOL STORAGE ROOM FLOOR AND TERMINATE 6" AFF. PLUMBING CONTRACTOR TO PROVIDE WATER SERVICE FROM 6" AFF HROUGHOUT THE BUILDING.

PROVIDE FLAP VALVE IN HORIZONTAL (SEE RPZ DISCHARGE DRAINAGE DETAIL THIS SHEET)

WATER ENTRANCE DETAIL

SCALE: NTS

Barton & Loguidice	
Date	Scale
05/31/23	AS SHOWN

TOWN OF VESTAL MEMORIAL POOL RENOVATIONS PROJECT		Figure Number
PLUMBING DETAILS		P-SK01
TOWN OF VESTAL		Project Number
BROOME COUNTY, NEW YORK		409.005.001