

BID ADDENDUM NO. 1

6/10/2022

Southeast Steuben County Library
Mary Lu Walker Children's Area Renovations
3140.004

The following Addendum items shall be considered a part of the contract documents prepared by HUNT ENGINEERS, ARCHITECTS, LAND SURVEYORS & LANDSCAPE ARCHITECT, DPC. Bid Document date of June 3rd, 2022

Clarifications issued by this Addendum:

None

Project Manual Sections issued by this Addendum:

07 21 00 – Thermal Insulation

Drawings issued by this Addendum:

SP1.1 – STAGING PLAN

Revisions to Project Manual issued by this Addendum:

ITEM AD1-1 Refer to Section 00 01 12 – Table of Contents

ADD Specification Section 07 21 00 – Thermal Insulation as issued by this addendum.

ITEM AD1-2 Refer to Section 01 50 00 – Temporary Facilities and Controls

ADD to end of specification drawing SP1.1 – STAGING PLAN as issued by this addendum.

Revisions to Drawings issued by this Addendum:

None

End of Addendum 1

ACKNOWLEDGMENT OF RECEIPT BY:

LEGAL NAME OF BIDDER: _____

BY (Signature & Title): _____

DATE: _____

THIS PAGE SHALL BE ATTACHED TO AND SUBMITTED WITH THE BID PROPOSAL.

SECTION 07 21 00
THERMAL INSULATION

PART 1 GENERAL

1.1 SECTION INCLUDES

- A. Batt insulation in tiered seating construction.

1.2 REFERENCE STANDARDS

- A. ASTM C240 - Standard Test Methods of Testing Cellular Glass Insulation Block; 2018.
- B. ASTM C612 - Standard Specification for Mineral Fiber Block and Board Thermal Insulation; 2014 (Reapproved 2019).
- C. ASTM C665 - Standard Specification for Mineral-Fiber Blanket Thermal Insulation for Light Frame Construction and Manufactured Housing; 2017.
- D. ASTM E84 - Standard Test Method for Surface Burning Characteristics of Building Materials; 2019b.
- E. ASTM E96/E96M - Standard Test Methods for Water Vapor Transmission of Materials; 2016.

1.3 SUBMITTALS

- A. See Section 01 30 00 - Administrative Requirements for submittal procedures.
- B. Product Data: Provide data on product characteristics, performance criteria, and product limitations.
- C. Manufacturer's Installation Instructions: Include information on special environmental conditions required for installation and installation techniques.

1.4 FIELD CONDITIONS

- A. Do not install insulation adhesives when temperature or weather conditions are detrimental to successful installation.

PART 2 PRODUCTS

2.1 APPLICATIONS

- A. Insulation in Wood Framed Construction: Batt insulation with no vapor retarder.

2.2 BATT INSULATION MATERIALS

- A. Mineral Fiber Batt Insulation: Flexible or semi-rigid preformed batt or blanket, complying with ASTM C665; friction fit; unfaced flame spread index of 0 (zero) when tested in accordance with ASTM E84.
 - 1. Smoke Developed Index: 0 (zero), when tested in accordance with ASTM E84.
 - 2. Density: 2.4 lb/ft, when tested in accordance with ASTM C167
 - 3. Acoustical Performance NRC - 1.05
 - 4. Width: 16"
 - 5. Thickness: 3 inch.

6. Products:
 - a. ROCKWOOL (ROXUL, Inc); SAFE'N'SOUND: www.rockwool.com/#sle.
 - b. Substitutions: See Section 01 60 00 - Product Requirements.

2.3 ACCESSORIES

- A. Insulation Fasteners: Impaling clip of unfinished steel with washer retainer and clips, to be adhered to surface to receive insulation, length to suit insulation thickness and substrate, capable of securely and rigidly fastening insulation in place.
- B. Adhesive: Type recommended by insulation manufacturer for application.

PART 3 EXECUTION

3.1 EXAMINATION

- A. Verify that substrate, adjacent materials, and insulation materials are dry and that substrates are ready to receive insulation.
- B. Verify substrate surfaces are flat, free of honeycomb, fins, irregularities, or materials or substances that may impede adhesive bond.

3.2 BOARD INSTALLATION AT CAVITY WALLS

- A. Secure impale fasteners to substrate at following frequency:
 1. Six (6) per insulation board.
- B. Adhere a 6 inches wide strip of polyethylene sheet over expansion joints with double beads of adhesive each side of joint.
 1. Extend sheet full height of joint.
- C. Install boards to fit snugly between wall ties.
 1. Place membrane surface facing out, and tape seal board joints.
- D. Install boards horizontally on walls.
- E. Cut and fit insulation tightly to protrusions or interruptions to the insulation plane.
- F. Place 6 inches wide polyethylene sheet at perimeter of wall openings, from adhesive vapor retarder bed to window and door frames, and tape seal in place to ensure continuity of vapor retarder and air seal.

3.3 BATT INSTALLATION

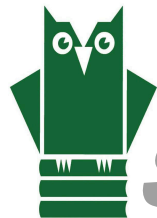
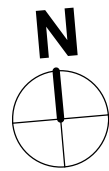
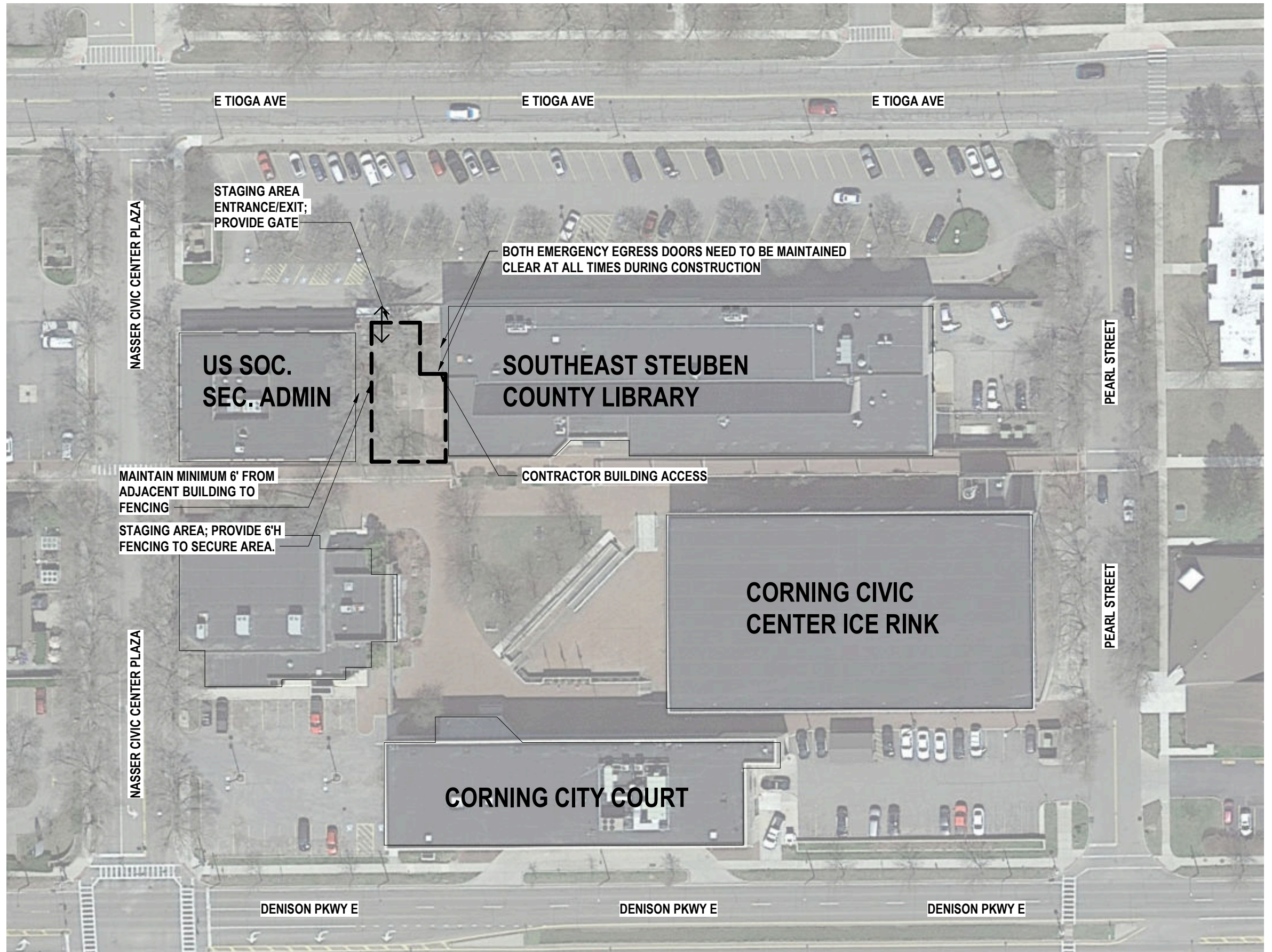
- A. Install in exterior wall and roof spaces without gaps or voids. Do not compress insulation.
- B. Trim insulation neatly to fit spaces. Insulate miscellaneous gaps and voids.
- C. Fit insulation tightly in cavities and tightly to exterior side of mechanical and electrical services within the plane of the insulation.
- D. Metal Framing: Install with factory applied vapor retarder membrane facing warm side of building spaces. Lap ends and side flanges of membrane over framing members.
- E. Tape seal butt ends, lapped flanges, and tears or cuts in membrane.
- F. At wood framing, place vapor retarder on warm side of insulation by stapling at 6 inches on center. Lap and seal sheet retarder joints over face of member.

- G. Tape seal tears or cuts in vapor retarder.
- H. Extend vapor retarder tightly to full perimeter of adjacent window and door frames and other items interrupting the plane of the membrane; tape seal in place.

END OF SECTION

NOTE:

THE STAGING AREA IS LIMITED AND NEEDS TO HAVE ALL CONSTRUCTION ACTIVITIES/MATERIAL CONTAINED WITHIN. DUMPSTERS SHALL BE CONTAINED WITHIN STAGING AREA, OWNERS DUMPSTERS WILL NOT BE USED FOR CONSTRUCTION ACTIVITIES. REFER TO TEMPORARY FACILITIES SPECIFICATIONS FOR ADDITIONAL DETAILS



MARY LU WALKER CHILDREN'S AREA RENOVATIONS
SOUTHEAST STEUBEN COUNTY LIBRARY

STAGING PLAN

HUNT ENGINEERS | ARCHITECTS | SURVEYORS

COPYRIGHT: 2022