

BID ADDENDUM NO. (4)

01/09/2024
South Seneca CSD
2022 Capital Improvement

SED #56-05-01-04-5-014-001 – Transportation Facility
SED #56-05-01-04-5-002-009 – Existing Bus Garage
SED #56-05-01-04-0-001-022 – Ovid JR/SR High School
SED #56-05-01-04-0-004-024 – Interlaken Elementary School

The following Addendum items shall be considered a part of the contract documents prepared by HUNT ENGINEERS, ARCHITECTS, LAND SURVEYORS & LANDSCAPE ARCHITECT, DPC.
Bid Document date of November 30th, 2023.

Clarifications issued by this Addendum:

None

Project Manual Sections issued by this Addendum:

10 44 00 – FIRE PROTECTION SPECIFICATION

Drawings issued by this Addendum:

AD4-A1	ENTRY PARAPET DETAIL – HIGH EDGE
AD4-A2	ENTRY PARAPET DETAIL – MIDDLE PREP.
AD4-E1	ELECTRICAL DEMO & NEW WORK PLAN – DRAMA PREP
AD4-E2	LIGHT FIXTURE SCHEDULE

Revisions to Project Manual issued by this Addendum:

ITEM AD3-1 Refer to 07 42 13.19 – INSULATED METAL WALL PANELS

AMEND	SECTION 2.3D to read “Internal and External Corners: Same material, thickness, and finish as exterior sheets; factory-fabricated mitered to required angles in one continuous piece with minimum 18 in. returns. Except were indicated on drawings as extrusions.
--------------	---

ITEM AD3-2 Refer to 07 42 13.19 – INSULATED METAL WALL PANELS

AMEND	SECTION 2.3E to read “Trim, Closure Pieces, Expansion Joints, Caps, Flashings, Fascia’s, and Infills; Same material thickness and finish as exterior sheets; factory-fabricated to required profiles; fabricated in longest practicable lengths. except where indicated on drawings as extrusions.
--------------	--

ITEM AD3-3 Refer to 10 44 00 – FIRE PROTECTION SPECIALTIES

ADD SPECIFICATION 10 44 00 – FIRE PROTECTION SPECIALTIES – issued via this addendum.

Revisions to Drawings issued by this Addendum:

ITEM AD3-4 TF-A4.1 WALL SECTIONS

DELETE Note on detail (2) “WEATHER BARRIER”

ITEM AD3-5 TF-A4.1 WALL SECTIONS

DELETE Note on detail (2) “5/8” EXTERIOR SHEATHING”

ITEM AD3-6 TF-A4.2 WALL SECTIONS

DELETE Note on detail (1) “WEATHER BARRIER”

ITEM AD3-7 TF-A4.2 WALL SECTIONS

DELETE Note on detail (1) “5/8” EXTERIOR SHEATHING”

ITEM AD3-8 TF-A4.2 WALL SECTIONS

DELETE Note on detail (2) “WEATHER BARRIER”

ITEM AD3-9 TF-A4.2 WALL SECTIONS

DELETE Note on detail (2) “5/8” EXTERIOR SHEATHING”

ITEM AD3-10 TF-A4.2 WALL SECTIONS

DELETE Note on detail (3) “WEATHER BARRIER”

ITEM AD3-11 TF-A4.2 WALL SECTIONS

DELETE Note on detail (3) “WEATHER BARRIER”

ITEM AD3-12 TF-A4.2 WALL SECTIONS

DELETE Note on detail (3) “5/8” EXTERIOR SHEATHING”

ITEM AD3-13 TF-A6.1 DOOR AND WINDOW SCHEDULES & TYPES

ADD Note on sheet to read.

“1-ALL EXTERIOR DETAILS TO MATCH WALL ASSEMBLY SHOWN ON WALL SECTIONS

2-AT ALL INSULATED WALL PANEL DETAILS THERE WILL BE NO EXTERIOR SHEATHING OR WEATHER BARRIER REQUIRED.”

ITEM AD3-14 TF-A7.5 ENTRANCE CANOPY SECTIONS AND DETAILS

AMEND DETAIL (3) with Drawing AD4-A1 issued via this addendum.

ITEM AD3-15 TF-A7.5 ENTRANCE CANOPY SECTIONS AND DETAILS

AMEND DETAIL (4) with Drawing AD4-A2 issued via this addendum.

ITEM AD3-16 TF-E2.1 FIRST & SECOND FLOOR LIGHTING & FA PLAN

ADD Drawing AD4-E1 issued via this addendum.

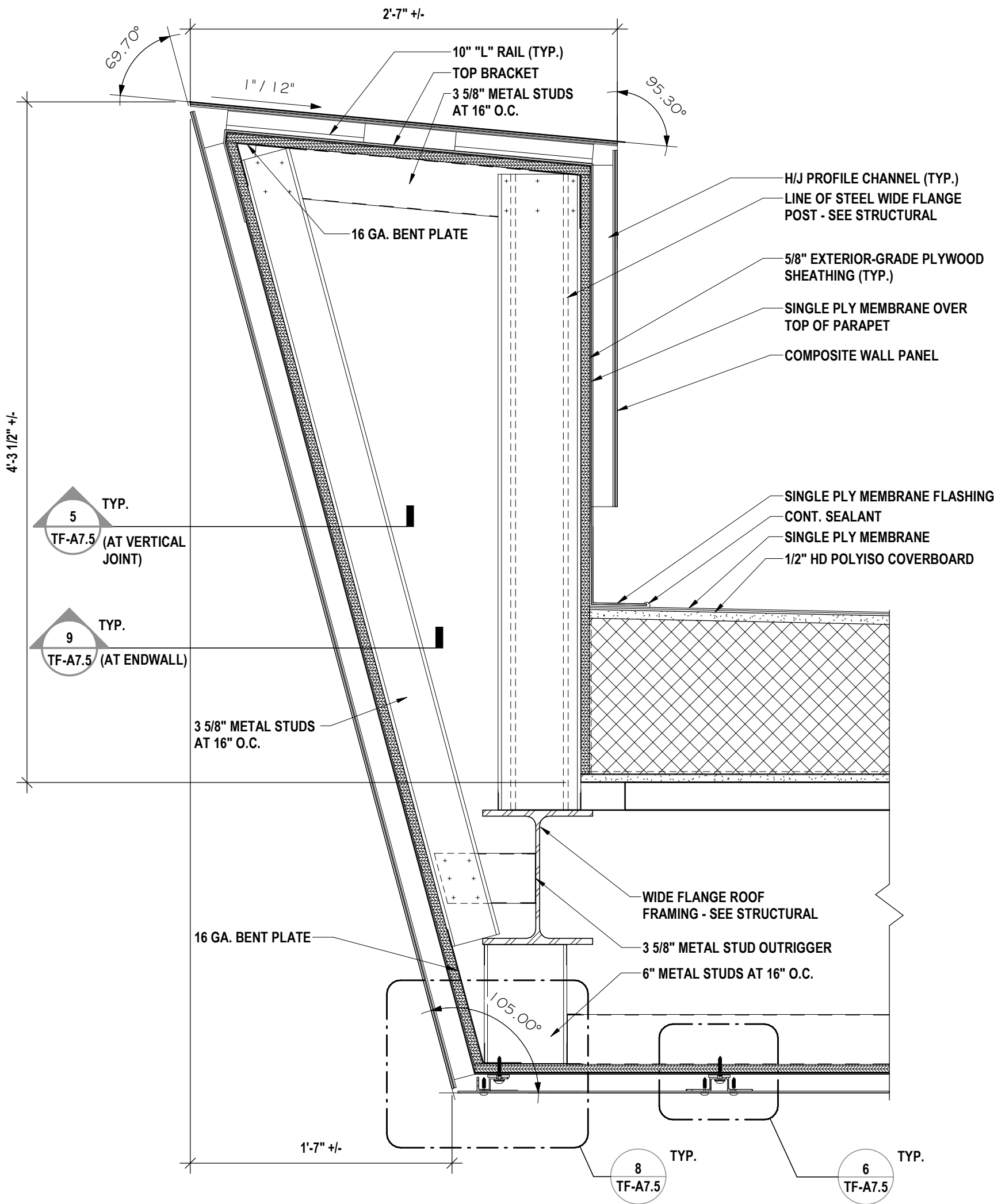
ITEM AD3-17 TF-E3.1 SCHEDULES & POWER ONELINE DIAGRAM

AMEND Light fixture schedule with AD4-E2 issued via this addendum.

ITEM AD3-18 HS-A0.1 FIRST FLOOR DEMOLITION PLAN - AREA A

AMEND Alternate label at Rm. 134J to read "ALT-HSMS2"

End of Addendum (4)



3 ENTRY PARAPET DETAIL - HIGH EDGE
1 1/2" = 1'-0"

OVID JR/SR HIGH SCHOOL SED #: 56-05-01-04-0-001-022, INTERLAKEN ELEMENTARY SCHOOL SED #: 56-05-01-04-0-004-024, DEMOLISHED BUS GARAGE SED #: 56-05-01-04-5-002-009, NEW TRANSPORTATION FACILITY SED #: 56-05-01-04-5-014-001

PROJECT NO: 2541.034

AD4-A1

ENTRY PARAPET DETAIL - HIGH EDGE

2022 CIP - TRANSP. FACILITY, HS/MS & ELEM. RENOVATIONS
SOUTH SENECA CENTRAL SCHOOL DISTRICT

7263 MAIN ST, OVID, NY 14521

HUNT ENGINEERS | ARCHITECTS | SURVEYORS

HORSEHEADS, NY 607 - 358 - 1000 ROCHESTER, NY 585 - 327 - 7950
TOWANDA, PA 570 - 265 - 4868 BINGHAMTON, NY 607 - 798 - 8081
ALBANY, NY 607 - 798 - 8081 WWW.HUNT-EAS.COM
NY CERTIFICATE NO. 0018220 PA CERTIFICATE NO. TSC2203131464-1

IT IS A VIOLATION OF THE LAW FOR ANY
PERSON TO MAKE UNAUTHORIZED
REPRODUCTIONS OF THIS DOCUMENT
WITHOUT THE WRITTEN CONSENT OF
ARCHITECTS OR SURVEYORS SEAL.

DRAWN BY: JSB
CHECKED BY: JSB
DATE: 06/23/2023
Copyright: 2023

SECTION 10 44 00
FIRE PROTECTION SPECIALTIES

PART 1 GENERAL

1.1 SECTION INCLUDES

- A. Fire extinguishers.
- B. Fire blankets.
- C. Fire extinguisher cabinets.
- D. Accessories.

1.2 RELATED REQUIREMENTS

- A. Section 06 10 00 - Rough Carpentry: Wood blocking product and execution requirements.
- B. Section 04 20 00 - Unit Masonry: Roughed-in wall openings.
- C. Section 09 21 16 - Gypsum Board Assemblies: Execution requirements for placement of rough-in frame for cabinets.
- D. Section 09 91 23 - Interior Painting: Field paint finish.

1.3 REFERENCE STANDARDS

- A. NFPA 10 - Standard for Portable Fire Extinguishers; 2017, with Errata (2018).
- B. UL (DIR) - Online Certifications Directory; Current Edition.

1.4 SUBMITTALS

- A. See Section 01 30 00 - Administrative Requirements, for submittal procedures.
- B. Shop Drawings: Indicate locations of cabinets and cabinet physical dimensions.
- C. Manufacturer's Installation Instructions: Indicate special criteria and wall opening coordination requirements.
- D. Manufacturer's Certificate: Certify that products meet or exceed specified requirements.
- E. Maintenance Data: Include test, refill or recharge schedules and re-certification requirements.

1.5 FIELD CONDITIONS

- A. Do not install extinguishers when ambient temperature may cause freezing of extinguisher ingredients.

PART 2 PRODUCTS

2.1 MANUFACTURERS

- A. Fire Extinguishers:
 - 1. Substitutions: See Section 01 60 00 - Product Requirements.

- B. Fire Extinguisher Cabinets and Accessories:
 - 1. Larsen's Manufacturing Co: www.larsensmfg.com/#sle.
 - 2. Substitutions: See Section 01 60 00 - Product Requirements.

2.2 FIRE EXTINGUISHERS

- A. Fire Extinguishers - General: Comply with product requirements of NFPA 10 and applicable codes, whichever is more stringent.
- B. Dry Chemical Type Fire Extinguishers: Stainless steel tank, with pressure gage.
 - 1. Class: A.
 - 2. Size: 5 pound.
 - 3. Finish: Baked enamel, red color.

2.3 FIRE EXTINGUISHER CABINETS

- A. Fire Rated Cabinet Construction: One-hour fire rated.
 - 1. Steel; double wall or outer and inner boxes with 5/8 inch thick fire barrier material.
- B. Cabinet Configuration: Recessed type.
 - 1. Size to accommodate accessories.
 - 2. Trim: Flat square edge, with 2 inch wide face.
 - 3. Provide cabinet enclosure with right angle inside corners and seams, and with formed perimeter trim and door stiles.
- C. Door: 0.036 inch thick, reinforced for flatness and rigidity; latch. Hinge doors for 180 degree opening with continuous piano hinge. Provide nylon catch. Provide satin finish pull handle.
- D. Door Glazing: Plastic, clear, 1/8 inch thick acrylic. Set in resilient channel gasket glazing. Formed in a bubble shape to allow full 180 degree visibility.
- E. Cabinet Mounting Hardware: Appropriate to cabinet, with pre-drilled holes for placement of anchors.
- F. Fabrication: Weld, fill, and grind components smooth.
- G. Finish of Cabinet Exterior Trim and Door: No.4 - Brushed stainless steel.
- H. Finish of Cabinet Interior: White colored enamel.

2.4 ACCESSORIES

- A. Fire Blanket: Fire retardant treated wool; red, 62 x 84 inch size.
- B. Fire Blanket Cabinet: Drop type with folded blanket, surface mounted.
- C. Extinguisher Brackets: Formed steel, chrome-plated.
- D. Cabinet Signage: Lettering applied to back of plastic vision panel that reads "Fire Extinguisher", and graphic identification symbol..

PART 3 EXECUTION

3.1 EXAMINATION

- A. Verify existing conditions before starting work.
- B. Verify rough openings for cabinet are correctly sized and located.

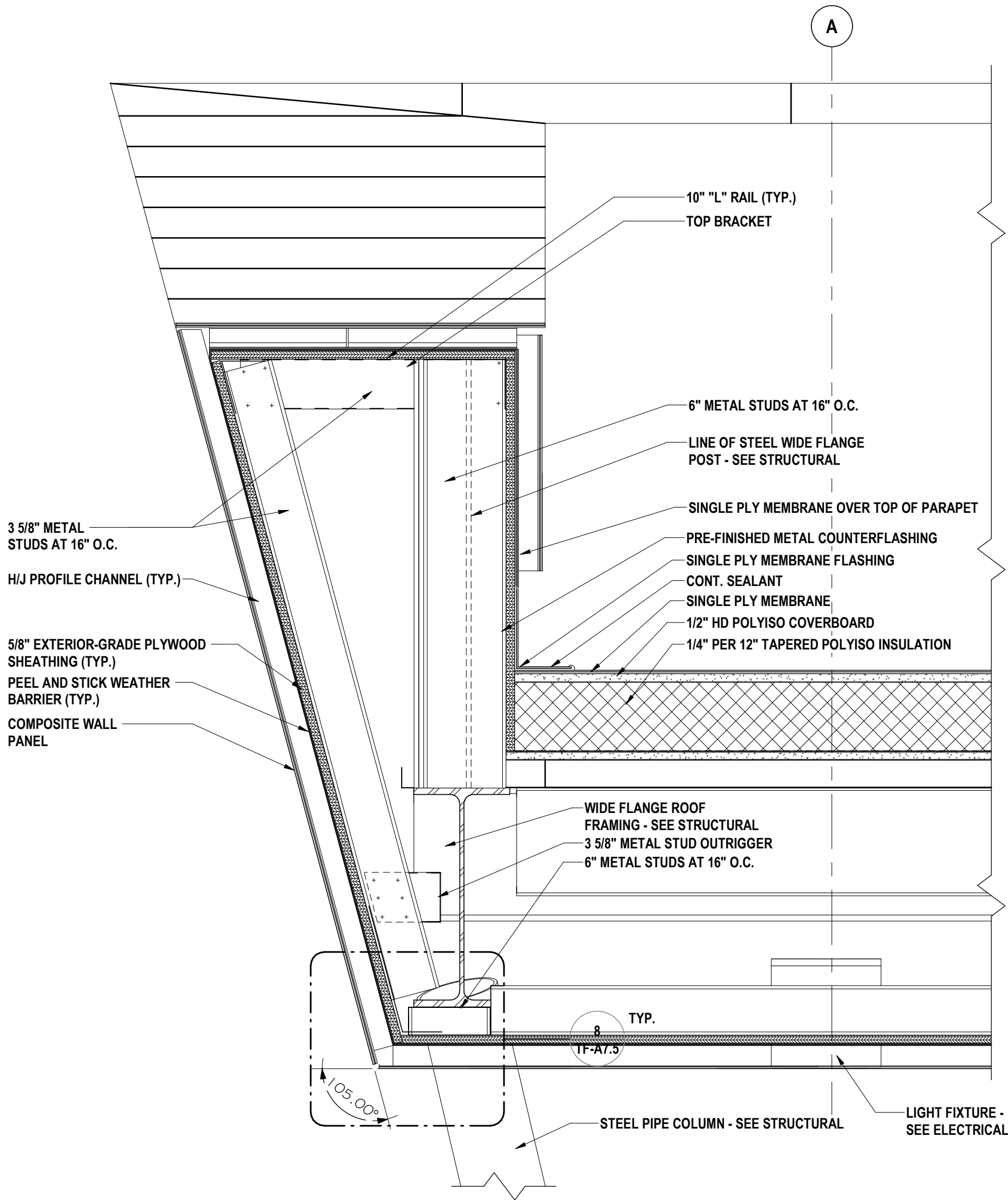
3.2 INSTALLATION

- A. Install in accordance with manufacturer's instructions.
- B. Install cabinets plumb and level in wall openings, 30 inches from finished floor to inside bottom of cabinet.
- C. Secure rigidly in place.
- D. Place extinguishers in cabinets.
- E. Position cabinet signage at the back of the plastic vision panel.
- F. Provide a cabinet, extinguisher and accessories at 75' maximum along the length of the corridors.
- G. Portable fire extinguishers (Surface Mounted Units): Install wall bracket by securely anchoring to masonry wall or wood blocking within a stud wall. Place extinguisher in bracket.

3.3 SCHEDULES

- A. Corridors: Water Type, Class 2-A, 2 1/2 gallon (11 L) capacity, polished chrome finish, placed in 12 inch (300 mm) wide by 30 inch (760 mm) high by 10 inch (250 mm) deep recessed polished stainless steel cabinet; locate two per floor.
- B. Mechanical Room: One fire blanket, and One Dry Chemical Type, Class 4-A:60-B:C fire extinguisher placed in 24 inch wide (600 mm) by 30 inch high (760 mm) by 10 inch (250 mm) deep surface mounted cabinet.

END OF SECTION



4 ENTRY PARAPET DETAIL - MIDDLE EDGE
1 1/2" = 1'-0"

OVID JR/SR HIGH SCHOOL SED #: 56-05-01-04-0-001-022, INTERLAKEN ELEMENTARY SCHOOL SED #: 56-05-01-04-0-004-024, DEMOLISHED BUS GARAGE SED #: 56-05-01-04-5-002-009, NEW TRANSPORTATION FACILITY SED #: 56-05-01-04-5-014-001

PROJECT NO: 2541.034

AD4-A2

ENTRY PARAPET DETAIL - MIDDLE EDGE

**2022 CIP - TRANSP. FACILITY, HS/MS & ELEM. RENOVATIONS
SOUTH SENECA CENTRAL SCHOOL DISTRICT**

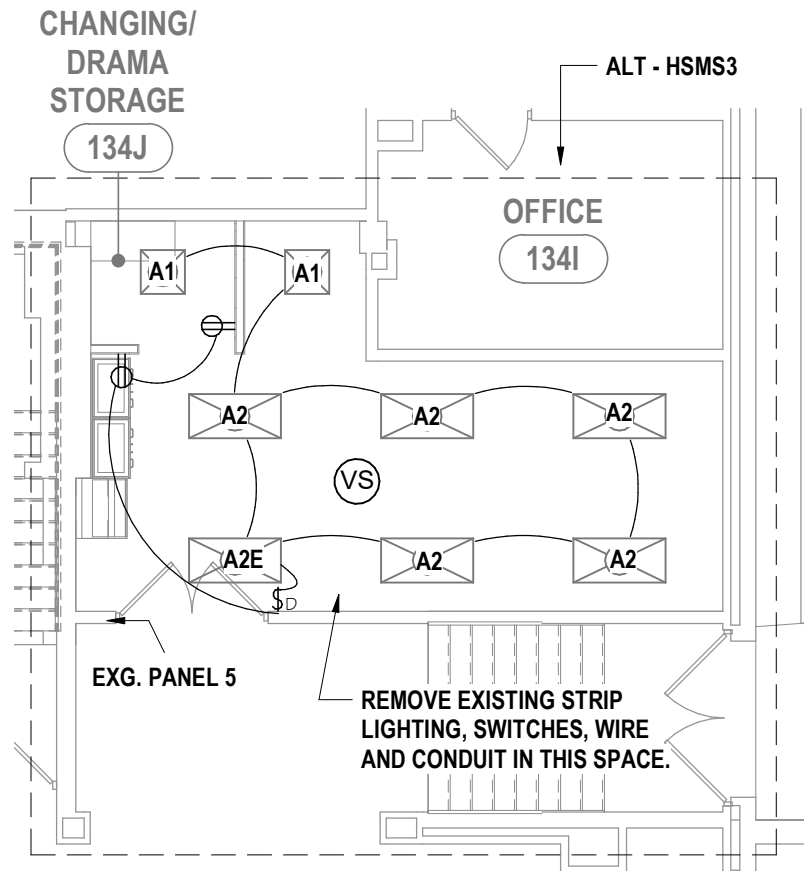
7263 MAIN ST, OVID, NY 14521

HUNT ENGINEERS | ARCHITECTS | SURVEYORS

HORSEHEADS, NY 607 - 358 - 1000 ROCHESTER, NY 585 - 327 - 7950
TOWANDA, PA 570 - 265 - 4868 BINGHAMTON, NY 607 - 798 - 8081
ALBANY, NY 607 - 798 - 8081 WWW.HUNT-EAS.COM
NY CERTIFICATE NO. 0018220 PA CERTIFICATE NO. TSC2203131464-1

IT IS A VIOLATION OF THE LAW FOR ANY
PERSON TO MAKE UNAUTHORIZED
ALTERATIONS TO ANY DRAWING
BEARING A LICENSED ENGINEER'S
ARCHITECT'S OR SURVEYOR'S SEAL.

DRAWN BY: JSB
CHECKED BY: JSB
DATE: 06/23/2023
Copyright: 2023



1 ELECTRICAL DEMO & NEW WORK PLAN
 1/8" = 1'-0"

ELECTRICAL DEMO & NEW WORK PLAN - DRAMA PREP.

2022 CIP - TRANSP. FACILITY, HS/MS & ELEM. RENOVATIONS
SOUTH SENECA CENTRAL SCHOOL DISTRICT

7263 MAIN ST., OVID, NY 14521

Copyright 2023

HUNT

ENGINEERS | ARCHITECTS | SURVEYORS

HORSEHEADS, NY 607 - 358 - 1000 ROCHESTER, NY 585 - 327 - 7950

TOWANDA, PA 570 - 265 - 4868 BINGHAMTON, NY 607 - 798 - 8081

ALBANY, NY 607 - 798 - 8081 WWW.HUNT-EAS.COM

NY CERTIFICATE NO. 0018220 PA CERTIFICATE NO. TSC2203131464-1

AD4-E1

DATE:
01/09/24

PROJECT NO:
2541.034

DRAWN BY:TEA

CHECKED BY:TEA

DATE:01/09/24

IT IS A VIOLATION OF THE LAW FOR ANY PERSON TO MAKE UNAUTHORIZED ALTERATIONS OR ADDITIONS TO PLANS BEARING A LICENSED ENGINEER'S, ARCHITECT'S OR SURVEYOR'S SEAL.

HUNT

ENGINEERS | ARCHITECTS | SURVEYORS

HORSEHEADS, NY 607-358-1000 ROCHESTER, NY 585-327-7950

TOWANDA, PA 570-265-4888 BINGHAMTON, NY 607-798-8081

ALBANY, NY 607-798-8081 WWW.HUNT-EAS.COM

NY CERTIFICATE NO. 0018220 PA CERTIFICATE NO. TSC22203131464-1

LIGHT FIXTURE SCHEDULE

OID HIGH SCHOOL RENOVATIONS

SOUTH SENECA CENTRAL SCHOOL DISTRICT

7263 MAIN ST., OVID, NY 14521

AD4-E2

PROJECT NO: 2541.034

SOUTH SENECA CSD LIGHT FIXTURE SCHEDULE - HS, ES, BG												
TYPE	DESCRIPTION	SIZE	MOUNTING	VOLTAGE	LUMENS	LED COLOR TEMP	LOAD EA. (WATTS)	MFG./CAT. NO.	FINISH	REMARKS	TYPE	NOTES
A1	RECESSED EDGE LIT FLAT PANEL	2x2	RECESSED	UNIV.	FIELD SELECTABLE	FIELD SELECTABLE	VARIES	DAY-BRITE #2SBP3550L8C5-4-DIM	WHITE		A1	1,3,4
A1E	RECESSED EDGE LIT FLAT PANEL	2x2	RECESSED	UNIV.	FIELD SELECTABLE	FIELD SELECTABLE	VARIES	DAY-BRITE #2SBP3550L8C5-4-DIM	WHITE	PROVIDE WITH EM BATTERY BACK-UP	A1E	1,3,4
A2	RECESSED EDGE LIT FLAT PANEL	2x4	RECESSED	UNIV.	FIELD SELECTABLE	FIELD SELECTABLE	VARIES	DAY-BRITE #2SBP3550L8C5-4-DIM	WHITE		A2	1,3,4
A2E	RECESSED EDGE LIT FLAT PANEL	2x4	RECESSED	UNIV.	FIELD SELECTABLE	FIELD SELECTABLE	VARIES	DAY-BRITE #2SBP3550L8C5-4-DIM	WHITE	PROVIDE WITH EM BATTERY BACK-UP	A2E	1,3,4
B	LENSED STRIP FIXTURE	4"x4'	CHAIN	UNIV.	4000	4000	31	DAY-BRITE #LBX-40L-FD	WHITE		B	3,4
BE	LENSED STRIP FIXTURE	4"x4'	CHAIN	UNIV.	4000	4000	31	DAY-BRITE #LBX-40L-FD-EMLED	WHITE	PROVIDE WITH EM BATTERY BACK-UP	BE	3,4
B1	LENSED STRIP FIXTURE - WL	6"x4'	CHAIN	UNIV.	7700	4000	56	DAY-BRITE #V3W-4-80L-DIM-SSL-WHP	WHITE		B1	3,4
B1E	LENSED STRIP FIXTURE - WL	6"x4'	CHAIN	UNIV.	7700	4000	56	DAY-BRITE #V3W-4-80L-DIM-SSL-WHP-BSL10LST	WHITE	PROVIDE WITH EM BATTERY BACK-UP	B1E	3,4
C	CANOPY LIGHTING - LINEAR	6"x4'	RECESSED	UNIV.	2200	4000	21	VISIONEERING #LMEZY-F-022L	WHITE		C	2
C1	CANOPY LIGHTING - LINEAR	6"x4'	RECESSED	UNIV.	2200	4000	21	VISIONEERING #LMEZY-F-022L	WHITE		C1	2
H2	HIGH BAY INDUSTRIAL	8"x4'	CABLE	UNIV.	21000	4000	88	VISIONEERING #LHB-C-P73	WHITE		H2	3
U	UPLIGHT - BUS LIGHT	6" DIA	RECESSED	UNIV.	1770	4000	21	MAYER #MIU220-S-21-840-30-D-F-RG	-		U	3
X1	EXIT LIGHT	9"x13"	UNIV.	UNIV.	-	RED	1	EMERGI-LITE #SVX-BB-R	BLACK		X1	

- LIGHTING FIXTURE SCHEDULE NOTES:
- COORDINATE LUMEN AND COLOR SETTINGS WITH ENGINEER PRIOR TO INSTALLATION.
 - PRIOR TO ORDERING LIGHT FIXTURE, EC IS TO COORDINATE WITH ENGINEER REGARDING INSTALLATION.
 - LIGHT FIXTURE SHALL BE DESIGNLIGHTS CONSORTIUM QUALIFIED.
 - FIXTURE SHALL HAVE 0-10V DIMMING CAPABILITY AND BE CONTROLLED BY A COMPATIBLE 0-10V DIMMING SWITCH.