

DOCUMENT 00 90 01 - ADDENDA

1.1 PROJECT INFORMATION

- A. Project Name: CAPITAL PROJECT PHASE 4.
- B. Owner: OWEGO APALACHIN CENTRAL SCHOOL DISTRICT.
- C. Architect: HIGHLAND ASSOCIATES.
- D. Construction Manager: TAMCO LLC
- E. Architect Project Number: 2024-240P.
- F. Date of Addendum: APRIL 30, 2026.

1.2 NOTICE TO BIDDERS

- A. This Addendum is issued to all registered plan holders pursuant to the Instructions to Bidders and Conditions of the Contract. This Addendum serves to clarify, revise, and supersede information in the Project Manual, Drawings, and previously issued Addenda. Portions of the Addendum affecting the Contract Documents will be incorporated into the Contract by enumeration of the Addendum in the Owner/Contractor Agreement.
- B. Acknowledgement: Bidders must acknowledge receipt of any and all Addenda in the space provided on the Bid Form. Failure to do so may result in rejection of the Bid. All requirements of the bidding documents remain unchanged except as cited herein.
- C. **The date for receipt of bids is changed to the following, at same time and location.**
 - 1. **Bid Date: May 5, 2026 at 1:00 pm.**

1.3 ATTACHMENTS

- A. This Addendum includes the following attached Documents and Specification Sections:
 - 1. Specification Section 08 17 43 FRP ALUM HYBRID DOORS dated APRIL 29, 2026 (new).
- B. This Addendum includes the following attached sheets:
 - 1. AES SITE LOGISTICS PLAN (1 sheet)
 - 2. AES BUILDING LOGISTICS PLAN (1 sheet)
 - 3. OFA SITE LOGISTICS PLAN (1 sheet)
 - 4. OFA BUILDING LOGISTICS PLAN (2 sheets)

1.4 CLARIFICATIONS AND RFIs

A. Issued herewith are the following Pre-Bid RFIs received up to April 29, 2026:

1. AB Construction and Roofing PB RFI 01
2. AB Construction and Roofing PB RFI 02
3. AB Construction and Roofing PB RFI 03
4. AB Construction and Roofing PB RFI 04
5. American Ornamental PB RFI 01
6. Southern Glass PB RFI 01
7. Whitmore Fence PB RFI 01
8. Smith PB RFI 01
9. Smith PB RFI 02
10. Smith PB RFI 03
11. Smith PB RFI 04 (will be answered in addendum #02)
12. Smith PB RFI 05
13. Smith PB RFI 06
14. Smith PB RFI 07
15. Smith PB RFI 08
16. Smith PB RFI 09 (will be answered in addendum #02)
17. Smith PB RFI 10
18. Smith PB RFI 11
19. Smith PB RFI 12 (will be answered in addendum #02)
20. W & D RFI 02
21. W & D RFI 03
22. W & D RFI 04 (will be answered in addendum #02)
23. Streeter RFI 01
24. Streeter RFI 02
25. Streeter RFI 07
26. Streeter RFI 08 (will be answered in addendum #02)
27. Streeter RFI 09
28. Streeter RFI 10
29. Streeter RFI 11 (will be answered in addendum #02)
30. Matco PB RFI 01

END OF DOCUMENT 00 90 01

SECTION 08 17 43 - SANDSTONE FRP/ALUMINUM HYBRID DOORS AND FRAMES

PART 1 - GENERAL

1.1 SECTION INCLUDES

- A. Sandstone Texture FRP/ Aluminum Hybrid Door

1.2 RELATED SECTIONS

- A. Section 08 01 17 – Operation and Maintenance of Integrated Door Opening Assemblies.
- B. Section 08 06 71 – Door Hardware Schedule.
- C. Section 08 06 80 – Glazing Schedule.
- D. Section 08 71 00 – Door Hardware.

1.3 REFERENCES

- A. [ASTM-B209](#) – Standard Specification for Aluminum and Aluminum-Alloy Sheet and Plate.
- B. [ASTM-B221](#) – Standard Specification for Aluminum-Alloy Extruded Bars, Rods, Wire, Profiles, and Tubes.
- C. [ASTM-C518](#) – Standard test Method for Steady-State Thermal Transmission Properties by Means of Heat Flow Meter Apparatus.
- D. [ASTM-D256](#) – Standard Test Methods for Determining the Pendulum Impact Resistance of Plastics.
- E. [ASTM-D570](#) – Standard Test Method for Water Absorption of Plastics.
- F. [ASTM-D638](#) – Standard Test Method for Tensile Properties of Plastics.
- G. [ASTM-D790](#) – Standard Test Methods for Flexural Properties of Unreinforced and Reinforced Plastics and Electrical Insulating Materials.
- H. [ASTM-D1621](#) – Standard Test Method for Compressive Properties of Rigid Cellular Plastics.
- I. [ASTM-D1622](#) – Standard Test Method for Apparent Density of Rigid Cellular Plastics.
- J. [ASTM-D1623](#) – Standard Test Method for Tensile and Tensile Adhesion Properties of Rigid Cellular Plastics.

- K. [ASTM-D2126](#) – Standard Test Method for Response of Rigid Cellular Plastics to Thermal and Humid Aging.
- L. [ASTM-D2583](#) – Standard Test Method for Indentation Hardness of Rigid Plastics by Means of a Barcol Impressor.
- M. [ASTM-E84](#) – Standard Test Method for Surface Burning Characteristics of Building Materials.
- N. [ASTM-E283](#) – Standard Test Method for Determining Rate of Air Leakage Through Exterior Windows, Curtain Walls, and Doors Under Specified Pressure Differences Across the Specimen.
- O. [NFRC 100](#) – Procedure for Determining Fenestration Products U-Factors.
- P. [NFRC 400](#) – Procedure for Determining Fenestration Products Air Leakage.
- Q. [TAS 201](#) – Impact Test Procedures.
- R. [TAS 202](#) – Criteria for Testing Impact & Nonimpact Resistant Building Envelope Components Using Uniform Static Air Pressure.
- S. [TAS 203](#) – Criteria for Testing Products Subject to Cyclic Wind Pressure Loading.

1.4 SUBMITTALS

- A. Must comply with Section 01 33 00 – Submittal Procedures.
- B. Action Submittals/ Informational Submittals.
 - 1. Product Data
 - a. Submit manufacturer’s product data sheets, catalog pages illustrating the products, description of materials, components, fabrication, finishes, installation instructions, and applicable test reports.
 - 2. Shop Drawings
 - a. Submit manufacturer’s shop drawings, including elevations, sections, and details indicating dimensions, tolerances, materials, fabrication, doors, panels, framing, hardware schedule, and finish.
 - 3. Samples
 - a. Submit manufacturer’s door sample composed of door face sheet, core, framing and finish.
 - b. Submit manufacturer’s sample of standard colors for door face and frame.

4. Testing and Evaluation Reports
 - a. Submit testing reports and evaluations provided by manufacturer conducted by and accredited independent testing agency certifying doors and frames comply with specified performance requirements listed in Section 2.04.
5. Manufacturer Reports
 - a. Manufacturer's Project References.
 - 1) Submit list of successfully completed projects including project name, location, name of architect, type, and quantity of doors manufactured.

C. Closeout Submittals

1. Operation and Maintenance Manual.
 - a. Submit manufacturer's maintenance and cleaning instructions for doors and frames, including maintenance and operating instructions for hardware.
2. Warranty Documentation
 - a. Submit manufacturer's standard warranty.

1.5 QUALITY ASSURANCE

A. Manufacturer's Qualifications

1. Continuously engaged in manufacturing of doors of similar type to that specified, with a minimum of 25 years concurrent successful experience.
2. Door and frame components must be fabricated by same manufacturer.
3. Evidence of a documented complaint resolution quality management system.

1.6 DELIVERY, STORAGE, AND HANDLING

A. Delivery

1. Deliver materials to site in manufacturer's original, unopened, containers and packaging.
2. Labels clearly identifying opening, door mark, and manufacturer.

B. Storage

1. Store materials in a clean, dry area, indoors in accordance with manufacturer's instructions.

C. Handling

1. Protect materials and finish from damage during handling and installation.

1.7 WARRANTY

- A. Warrant doors, frames, and factory installed hardware against failure in materials and workmanship, including excessive deflection, faulty operation, defects in hardware installation, and deterioration of finish or construction in excess of normal weathering.
- B. Standard Period
 - 1. Ten years starting on date of shipment.
- C. Limited lifetime
 - 1. Covers failure of corner joinery, core deterioration, and delamination or bubbling of door skin and corrosion of all-fiberglass products while the door is in its specified application in its original installation.
- D. Finish
 - 1. Painted SL-20 face sheets: 5 years.
 - 2. Anodized, aluminum:10 years.

PART 2 - PRODUCTS

2.1 FRP/ALUMINUM HYBRID DOORS

- A. Manufacturer
 - 1. Special-Lite, Inc., Decatur, Michigan 49045. Web Site www.special-lite.com.
 - 2. Old Castle Building Products

2.2 DESCRIPTION

- A. Model
 - 1. SL-20 Sandstone Texture FRP/ Aluminum Hybrid Door.
 - 2. SL-20 FR Sandstone Texture FRP/ Aluminum Hybrid Door.
- B. Door Opening Size
 - 1. As indicated on drawings.
- C. Construction
 - 1. Door Thickness
 - a. 1-3/4"

2. Stiles & Rails
 - a. Aluminum extrusions made from 6063 aluminum alloys with a minimum temper of T5.
 - b. Minimum 2-5/16" deep one-piece extrusion with have integral reglets to accept face sheet on both interior and exterior side of door which secure face sheet into place and permit flush appearance.
 - c. Screw or snap in place applied caps are not acceptable.
 - d. Top rails must have integral legs for interlocking continuous extruded aluminum flush cap.
 - e. Bottom rails must have integral legs for interlocking continuous weather bar with single nylon brush weather stripping or manually adjustable SL-301 door bottom with two nylon brush weather stripping.
 - f. Pair of Doors Meeting stiles to include integral pocket to accept pile brush weather seal.
3. Corners
 - a. Mitered
 - b. Secured with 3/8" diameter full-width steel tie rod through extruded splines top and bottom which are integral to standard tubular shaped rails.
 - c. 1-1/4" x 1-1/4" x 3/16" 6061 aluminum angle reinforcement at corner to give strong, flat surface for locking hex nut to bear on.
 - d. Weld, glue, or other methods of corner joinery are not acceptable.
4. Core
 - a. Poured-in-place polyurethane foam.
 - b. Laid in foam cores are not acceptable.
 - c. Foam Plastic Insulated Doors: IBC 2603.4.
 - 1) Foam plastic shall be separated from the interior of a building by an approved thermal barrier.
 - 2) Approved thermal barrier must meet the acceptance criteria of the Temperature Transmission Fire Test and Integrity Fire Test as stated in NFPA 275.
 - 3) IBC 2603.4.1.7 foam plastic insulation, having a flame spread index less than 75 and a smoke developed index of not more than 450 shall be permitted as a door core when the face is metal minimum 0.032" aluminum or 0.016" steel.
 - 4) Standard door assembly can be tested to show it meets these requirements without the use of thermal barrier. If no independent testing conducted all doors with foam plastic core must have a thermal barrier.
5. Face Sheet
 - a. Exterior
 - 1) 0.120" thick, Sandstone texture, through color FRP sheet.
 - 2) Optional painted finish consult manufacturer.
 - 3) Class C standard

- b. Interior
 - 1) 0.120" thick, Sandstone texture, through color FRP sheet.
 - 2) Optional painted finish consult manufacturer.
 - 3) Class A
 - c. Attachment of face sheet.
 - 1) Extruded stiles and rails to have integral reglets to accept face sheet on both interior and exterior side of door which secure face sheet into place and permit flush appearance.
 - 2) Use of glue to bond face sheet to core or extrusions is not acceptable.
6. Cutouts
- a. Manufacture doors with cutouts for required vision lites, louvers, and panels.
7. Hardware
- a. Pre-machine doors in accordance with templates from specified hardware manufacturers.
 - b. Surface mounted closures will be reinforced for but not prepped or installed at factory.
 - c. Factory install door hardware to the greatest extent possible.
8. Reinforcements
- a. Aluminum extrusions made from 6061 or 6063 aluminum alloys.
 - b. Sheet and plate to conform to ASTM-B209.
 - c. Alloy and temper to be selected by manufacturer for strength, corrosion resistance, and application of required finish, and control of color.
 - d. Bars and tubes to meet ASTM-B221.

2.3 FRAMING

A. Framing

- 1. Thermally Broken Aluminum Framing.
 - a. Model
 - 1) SL-600TB
 - b. Materials
 - 1) See 2.05.A

- c. Perimeter Frame Members
 - 1) Storefront frame with thermally broken pocket filler.
 - 2) Factory fabricated.
 - 3) Open-back framing is not acceptable.
- d. Thermal Strut
 - 1) Pultruded fiberglass only, no other materials will be accepted.
- e. Applied Door Stops
 - 1) 5/8" x 1-1/4" or 5/8" x 1-3/4", 0.125" wall thickness, with screws and weather-stripping.
 - 2) Provide solid 1/2" aluminum bar behind door stop for closer shoe attachment.
 - 3) Pressure gasketing for weathering seal.
 - 4) Counterpunch fastener holes in door stop to preserve full-metal thickness under fastener head.
 - 5) Minimum 1/2" aluminum bar reinforcement under doorstop for required hardware attachments, aluminum to meet ASTM-B221.
- f. Caulking
 - 1) Caulk joints before assembling frame members.
- g. Frame Member to Member Connections.
 - 1) Secure joints with fasteners.
 - 2) Provide hairline butt joint appearance.
 - 3) Shear block construction only, no screw spline allowed.
- h. Hardware
 - 1) Pre-machine and reinforce frame members for hardware in accordance with manufacturer's standards and door hardware schedule.
 - 2) Surface mounted closures will be reinforced for but not prepped or installed at factory.
- i. Anchors:
 - 1) Anchors appropriate for wall conditions to anchor framing to wall materials.
 - 2) Door Jamb and Header Mounting Holes: Maximum of 24-inch centers.
 - 3) Secure head and sill members of transom, side lites, and similar conditions.

2.4 PERFORMANCE

A. Face Sheet

1. Standard Exterior Class C 0.120" thick, Sandstone texture, through color FRP sheet.

- a. Flexural Strength, ASTM-D790: 27 x 103 psi.
- b. Flexural Modulus, ASTM-D790: 0.7 x 106 psi.
- c. Tensile Strength, ASTM-D638: 18 x 103 psi.
- d. Tensile Modulus, ASTM-D638: 1.0 x 106 psi.
- e. Barcol Hardness, ASTM-D2583: 40.
- f. Izod Impact, ASTM-D256: 7.0 ft-lb/in.
- g. Gardner Impact Strength, ASTM-D5420: 30 in-lb.
- h. Water Absorption, ASTM-D570: 0.16%/24hrs at 77°F.
- i. Surface Burning, ASTM-E84: Flame Spread \leq 200, Smoke Developed \leq 450.
- j. Chemical Resistance

1) Excellent Rating

- a) Acetic Acid, Concentrated
- b) Acetic Acid, 5%
- c) Bleach Solution
- d) Detergent Solution
- e) Distilled Water
- f) Ethyl Acetate
- g) Formaldehyde
- h) Heptane
- i) Hydrochloric Acid, 10%
- j) Hydrogen Peroxide, 3%
- k) Isooctane
- l) Lactic Acid, 10%

k. USDA/FSIS Requirements

- 1) FRP face sheet with surfaseal is a finished outer surface material that is rigid; durable; non-toxic; non-corrosive; moisture resistant; a light, solid color such as white; easily inspected; smooth or an easily cleaned texture.
- 2) FRP face sheet with surfaseal does not contain any known carcinogen, mutagen, or teratogen classified as hazardous substances; heavy metals or toxic substances; antimicrobials; pesticides or substances with pesticidal characteristics.

2. Interior Face Only Class A 0.120" thick, Sandstone texture, FRP sheet.

- a. Flexural Strength, ASTM-D790: 14 x 103 psi.
- b. Flexural Modulus, ASTM-D790: 0.4 x 106 psi.
- c. Tensile Strength, ASTM-D638: 7 x 103 psi.
- d. Tensile Modulus, ASTM-D638: 0.8 x 106 psi.

- e. Barcol Hardness, ASTM-D2583: 45.
- f. Izod Impact, ASTM-D256: 4.0 ft-lb/in notched.
- g. Water Absorption, ASTM-D570: 0.16%/24hrs at 77°F.
- h. Surface Burning, ASTM-E84: Flame Spread \leq 25, Smoke Developed \leq 450.
- i. Taber Abrasion Resistance, Taber Test: 0.036% Max Wt. Loss, cs-17 wheels, 1000g. Wt., 25 cycles.

B. Door Core

- 1. Density, ASTM-D1622: \leq 5.0 pcf.
- 2. Compressive Properties, ASTM-D1621: Compressive Strength \geq 60 psi, Compressive Modulus \geq 1948 psi.
- 3. Tensile and Tensile Adhesion Properties, ASTM-D1623: Tensile Adhesion, 3" x 3" FRP Facers \geq 53 psi, Tensile Adhesion, 1" x 1" Foam \geq 104 psi.
- 4. Thermal and Humid Aging, ASTM-D2126: Volume Change at 158 °F, 100% humidity, 14 days \leq 13%.
- 5. Thermal Conductivity, ASTM-C518, Thermal Resistance \geq 0.10 m²K/W.

C. Door Panel

- 1. Indoor Air Quality, ASTM-D5116, ASTM-D6607: GreenGuard, GreenGuard Gold.

D. Door and Thermally Broken Aluminum Frame Assembly.

- 1. Thermal Transmittance, NFRC 100.
 - a. Opaque Swinging Door (< than 50% glass)
 - 1) U-Factor = 0.33 Btu/hr·ft²·°F.
 - b. Commercially Glazed Swinging Entrance Door (> than 50% glass)
 - 1) U-Factor = 0.62 Btu/hr·ft²·°F.
- 2. Air Leakage, NFRC 400, ASTM-E283.
 - a. Opaque Swinging Door (< than 50% glass)
 - 1) 0.02 cfm/sqft @ 1.57 psf.
 - 2) 0.02 cfm/sqft @ 6.24 psf.
 - b. Commercially Glazed Swinging Entrance Door (> than 50% glass)
 - 1) 0.22 cfm/sqft @ 1.57 psf.
 - 2) 0.42 cfm/sqft @ 6.24 psf.
- 3. Sound Transmission, ASTM-E90: STC = 30, OITC = 30.

2.5 MATERIALS

A. Aluminum Members

1. Aluminum extrusions made 6061 or 6063 aluminum alloys.
2. Sheet and plate to conform to ASTM-B209.
3. Alloy and temper to be selected by manufacturer for strength, corrosion resistance, and application of required finish, and control of color.

B. Fiberglass

1. See 2.02.C.5

C. Fasteners

1. All exposed fasteners will have a finish to match material being fastened.
2. 410 stainless steel or other non-corrosive metal.
3. Must be compatible with items being fastened.

2.6 FABRICATION

A. Factory Assembly

1. Door and frame components from the same manufacturer.
2. Required size for door and frame units, shall be as indicated on the drawings.
3. Complete cutting, fitting, forming, drilling, and grinding of metal before assembly.
4. All cut edges to be free of burs.
5. Welding of doors or frames is not acceptable.
6. Maintain continuity of line and accurate relation of planes and angles.
7. Secure attachments and support at mechanical joints with hairline fit at contact surfaces.

B. Shop Fabrication

1. All shop fabrication to be completed in accordance with manufactures process work instructions.
2. Quality control to be performed before leaving each department.

2.7 FINISHES

A. Door

1. Aluminum
 - a. Anodizing
 - 1) Class 1 Anodizing, minimum 0.7 mils thick.
 - a) Color - Clear 215 R1, AA-M10C12C22A41.

2. FRP Face Sheets
 - a. Exterior Through color.
 - 1) Color
 - a) To be selected from manufacturers standard color chart.
 - b. Interior
 - 1) Color
 - a) To be selected from manufacturers standard color chart.

B. Frame

1. Aluminum
 - a. Anodizing
 - 1) Class 1 Anodizing, minimum 0.7 mils thick.
 - a) Color - Clear 215 R1, AA-M10C12C22A41.

2.8 ACCESSORIES

A. Vision Lites

1. Factory Glazing
 - a. Model: School Guard Glass SG4.
 - b. Glazing Thickness: 1"
 - c. Rectangular Lites: Size, as indicated on drawings.
2. Rectangular Vision Lite Accessories
 - a. Security Grate
 - 1) SL-SG349
 - 2) Frame perimeter is 1" x 1" x 1/8" steel angle.
 - 3) Grate material is 14-gauge steel sheet perforated with 1/4" diameter round holes.
 - b. Vandal Screen
 - 1) SL-SG350
 - a) Frame perimeter is aluminum.
 - b) Screen material is 16-gauge stainless steel sheet perforated with 1/4" diameter round holes.
 - c. Louvers
 - 1) Size, as indicated on drawings.
 - 2) Factory installed
 - 3) 1" thick Y-Type fixed blade, 12" minimum from the bottom of the door.

- 4) Exterior side of louver shall be free of fasteners.
 - 5) Optional insect screen.
- d. Finish
- 1) Color: To be selected from manufacturers standard color chart.
3. Other Shapes
- a. Attach drawing for vision lite shape.
- B. Hardware
1. Pre-machine doors in accordance with templates from specified hardware manufactures and hardware schedule.
 2. Factory install hardware
 3. Hardware Schedule
- a. As follows with remainder specified in Section 08 71 00.
 - 1) Concealed adjustable bottom brush.
 - a) SL-301
 - 2) Mullions
 - a) Model: SL-60E

PART 3 - EXECUTION

3.1 EXAMINATION

- A. Examine areas to receive doors.
- B. Notify architect of conditions that would adversely affect installation or subsequent use.
- C. Do not proceed with installation until unsatisfactory conditions are corrected.

3.2 PREPARATION

- A. Ensure openings to receive frames are plumb, level, square, and in tolerance.

3.3 ERECTION

- A. Install doors in accordance with manufacturer's instructions.
- B. Install doors plumb, level, square, true to line, and without warp or rack.

- C. Anchor frames securely in place.
- D. Separate aluminum from other metal surfaces with bituminous coatings or other means approved by architect.
- E. Set thresholds in bed of mastic and back seal.
- F. Install exterior doors to be weathertight in closed position.
- G. Repair minor damages to finish in accordance with manufacturer's instructions and as approved by architect.
- H. Remove and replace damaged components that cannot be successfully repaired as determined by architect.

3.4 FIELD QUALITY CONTROL

- A. Manufacture's Field Services.
 - 1. Manufacturer's representative shall provide technical assistance and guidance for installation of doors.

3.5 ADJUSTING

- A. Adjust doors, hinges, and locksets for smooth operation without binding.

3.6 CLEANING

- A. Clean doors promptly after installation in accordance with manufacturer's instructions.
- B. Do not use harsh cleaning materials or methods that would damage finish.

3.7 PROTECTION

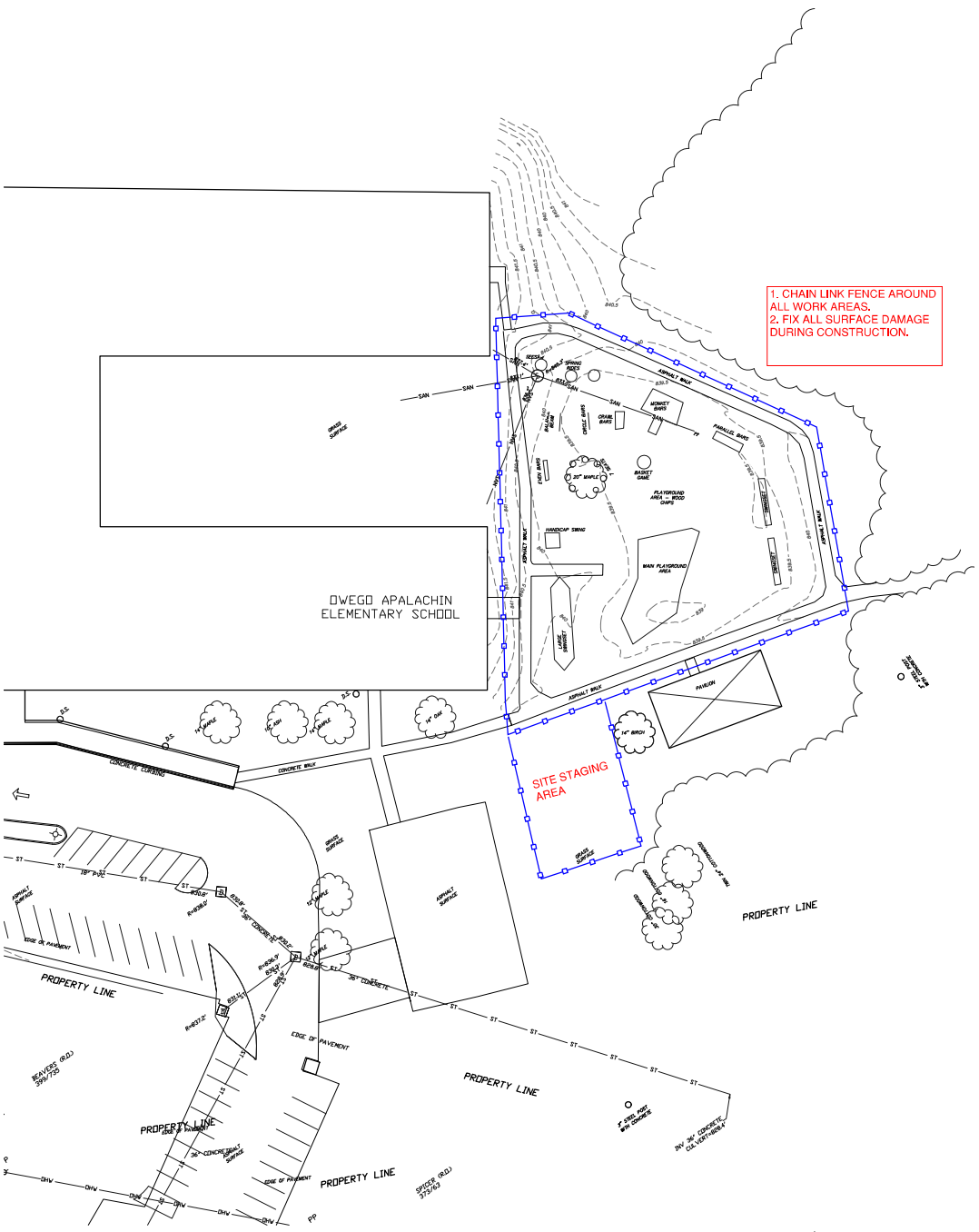
- A. Protect installed doors to ensure that, except for normal weathering, doors will be without damage or deterioration at time of substantial completion.

END OF SECTION 08 17 43

REVISION NO:



BID Submission
 April 10, 2026



1. CHAIN LINK FENCE AROUND ALL WORK AREAS.
 2. FIX ALL SURFACE DAMAGE DURING CONSTRUCTION.

SURVEY NOTES - AES

BOUNDARY AND TOPOGRAPHIC INFORMATION WAS TAKEN FROM THE FOLLOWING:
 TITLE: HES PLAYGROUND, APALACHIN ELEMENTARY SCHOOL PHASE 4, 408 PENNSYLVANIA AVE, APALACHIN NY 13721. PREPARED BY: TUPCO MANAGEMENT GROUP; 1 KATTELVILLE RD SUITE 8 BINGHAMTON NY 17901, DATED 8/20/20.
 DATE NOTES:
 1) ALL COORDINATES ARE BASED ON NAD83/CGRS ZONE 18N AND NAVD83 CGRS 18.
 2) UNDERGROUND UTILITIES ARE BASED ON SURFACE EVIDENCE AND INVENTS OF SANITARY. CONTRACTOR TO VERIFY UTILITY LOCATIONS IN FIELD.
 3) ELEVATIONS ARE DEPICTED AT 4 TO 10 FT CONTOUR INTERVAL.
 BENCHMARKS:
 BM#1 - APPROX. 40' ON HYDRANT.
 ELEV. = 844.87'

SURVEY VERIFICATION/COORDINATION - AES

CONTRACTOR IS RESPONSIBLE FOR VERIFICATION / COORDINATION OF ALL INFORMATION (BENCH-MARKS, ELEVATIONS, UTILITIES, ELEMENTS, TREES, ETC.) SHOWN ON THIS SURVEY AND CORRECTING THIS INFORMATION TO ACCURATE IN THE FIELD. DATA FOR THIS SURVEY IS PROVIDED FOR THE BENEFIT OF THE CONTRACTOR AND GENERAL. DESIGN INTENT IS SHOWN. NO ADDITIONAL CORRECTIONS WILL BE ALLOWED SHOULD INFORMATION SHOWN ON THE SURVEY AND FIELD DATA VARY.

LEGEND - AES

SYMBOL	PROPOSED	DESCRIPTION	SYMBOL	PROPOSED	DESCRIPTION
---	---	CONTRACT LIMIT LINE	⊕	⊕	FIRE HYDRANT
---	---	STREET LINE / PROPERTY EDGE	⊕	⊕	TURBID BLOCK
---	---	CONTOUR	⊕	⊕	WATER VALVE
---	---	CONCRETE CURB	⊕	⊕	WATER MANHOLE
---	---	PAVEMENT EDGE	⊕	⊕	AREA DRAIN
---	---	SAW CUT LINE	⊕	⊕	CATCH BASIN / STORM INLET
---	---	OVERHEAD WIRES	⊕	⊕	STORM MANHOLE / DRYWELL
---	---	WATER LINE - SIZE / DUCTILE IRON	⊕	⊕	SANITARY MANHOLE
---	---	GAS LINE	⊕	⊕	CLEANOUT
---	---	BURIED TELEPHONE LINE	⊕	⊕	GAS VALVE
---	---	BURIED FIBER OPTIC LINE	⊕	⊕	VENTIL. CLAD CHAIN LINK FENCE
---	---	BURIED DATA LINE	⊕	⊕	SNOW GAUGE
---	---	BURIED ELECTRIC LINE	⊕	⊕	FIELD VERIFY
---	---	SANITARY SEWER - SIZE / PVC	⊕	⊕	INVERT
---	---	STORM SEWER - SIZE / HDPE	⊕	⊕	TOP OF FOOTING
---	---	SEWER/WATER MANAGEMENT TRENCH	⊕	⊕	FINISHED GRADE
---	---	2" FLAT DRAIN	⊕	⊕	SUBGRADE
---	---	UTILITY POLE	⊕	⊕	EDGE OF WOODS
---	---	8" HIGH LIGHT POLE (SHOWN FOR COORDINATION ONLY)	⊕	⊕	TREES / SHRUBS
---	---	CAPPIED IRON ROAD ROUND	⊕	⊕	DRAINAGE FLOW DIRECTION
---	---	IRON PIPE ROUND	⊕	⊕	DETAIL FLAG
---	---	YELLOW CAPPIED IRON ROAD SET	⊕	⊕	CONSTRUCTION NOTE
---	---	TELEPHONE PULL BOX	⊕	⊕	REMOVE EXISTING PAVEMENT
---	---	ELECTRIC TRANSFORMER	⊕	⊕	3" ASPHALT FILLING REPAIR AND TACK COAT
---	---	ELECTRIC METER	⊕	⊕	3" 1/2" ASPHALT SEARING COURSE
---	---	CONCRETE HOUSING FOUND	⊕	⊕	LAWN TYPE 2 - 4" TOPSOIL AND SOIL
---	---	TELEPHONE pedestal	⊕	⊕	STONE DRAINAGE BLANKET
---	---	POST INDICATOR VALVE	⊕	⊕	SYNTHETIC TURF W/ PADDING
---	---	ELECTRIC RISER	⊕	⊕	
---	---	REPAIRABLE METAL BOLLARD	⊕	⊕	
---	---	TRAFFIC SIGN	⊕	⊕	

SITE PREPARATION and CONSTRUCTION NOTES - AES

- EXISTING LAWN AREA REMAINS PROTECT.
- ENTER EXISTING TOPSOIL AND STOCK PILE FOR REUSE ON SITE IN AN AREA AS SHOWN ON PLAN OR AS DIRECTED BY THE OWNER. TEMPORARILY KEEP IN PLACE IMMEDIATELY AND SURROUND WITH BILT FENCE.
- EXISTING VEGETATION REMAINS PROTECT AT ALL TIMES AS SHOWN ON THE PLAN AND AS SPECIFIED. DO NOT REMOVE OR DISRUPT EXISTING VEGETATION UNLESS OTHERWISE SPECIFIED.
- REPLACE EXISTING ASPHALT MATERIAL TO 1 1/2" DEPTH MINIMUM BEFORE AND SHALL CRACKED OR COMPRESS PAVEMENT BEHIND FILLINGS TO PROVIDE A STABLE BASE SATISFACTORY TO THE ARCHITECT AS DETAIL BY AND SPECIFIED. REPAIR PAVED AND CLEAN ENTIRE FILLED SURFACE. INSTALL INDOOR APPROVED TACK COAT TO FILLED SURFACE AND FIVE AS DETAIL BY AND SPECIFIED.
- EXISTING PAVEMENT REMAINS PROTECT. REPLACE ANY PAVEMENT DAMAGED DURING CONSTRUCTION.
- REMOVE EXISTING PAVEMENT SURFACE AND HALL OFF SITE OR AS GENERAL EXISTING FILL WITH MEETING SPECIFIED SLOPE REQUIREMENTS.
- EXISTING SITE UTILITY REMAINS PROTECT.
- INSTALL FLAT DRAIN AND BITS TO AVOID PLAYSCAPE FOOTING TYP.
- EXISTING SITE FEATURE REMAINS PROTECT.
- REMOVE EXISTING SIDEWALK AND DISPOSE OFF SITE INCLUDING ANY ASSOCIATED FOOTING OR UNDERPINNING. BACKFILL VOID WITH FROTHED GRANULAR SANDFILL. COMPACTED TO 95% OF IN PLACE DRY DENSITY.
- PROVIDE ADDITIONAL SATISFACTORY EARTH FILL AND 4" TOPSOIL AND SOILED LAWN IN AREA OF REMOVED EQUIPMENT AND WOOD CHIP SURFACING TYP.
- SAW CUT BEAR STRAIGHT EDGE PRIOR TO PAVING. AT SEVERALS REMOVE AT NEAREST CORNER JOINT.
- CONTRACTOR SHALL FIELD VERIFY LOCATION, ELEVATION, INVERT SIZE AND TYPE OF EXISTING PRELIM. PRIOR TO ORDERING MATERIALS AND CONSTRUCTION. NOTIFY LANDSCAPE ARCHITECT OF ANY DISCREPANCY IMMEDIATELY.
- ADJUST UTILITY TO FINISHED GRADE. FURNISH ALL LABOR AND MATERIAL TO ACCOMPISH.
- MEET EXISTING LINE AND EXISTING.
- ALIGN NEW EDGE WITH EXISTING.
- CAP END BILT TIGHT.
- PROVIDE HOT TAR ASPHALT CRACK SEALER BETWEEN EXISTING AND NEW ASPHALT JOINT.

OWEGO-APALACHIN CSD - SITE SURVEY



AES SED #60-06-01-06-0-008-018

CONTRACTOR SHALL VERIFY LOCATION, ELEVATION, INVERT SIZE AND TYPE OF EXISTING PRELIM. PRIOR TO ORDERING MATERIALS AND CONSTRUCTION. NOTIFY LANDSCAPE ARCHITECT OF ANY DISCREPANCY IMMEDIATELY.

PROJECT TITLE:



Owego Apalachin School District Phase 4
 405 Pennsylvania Avenue, Apalachin, NY 13827

SCALE:



DRAWING TITLE:

SITE SURVEY

DRAWN BY: [] CHECKED BY: []

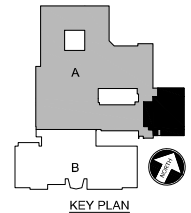
DATE: 4/10/2026 PROJECT NO: 2024-040P

DRAWING NO:

AES L0.01
 CAD FILE: [] PLOT DATE: []

REVISION NO:

BID Documents
 April 10, 2026



OFA SED #60-06-01-06-0-009-034

CONTENTS:
 THIS DRAWING IS AN INSTRUMENT OF SERVICE UNDER SECT 87(2)(b) OF THE
 OPEN GOVERNMENT LAW. ANY REPRODUCTION OR TRANSMISSION OF THIS
 DRAWING WITHOUT THE WRITTEN CONSENT OF HIGHLAND ASSOCIATES IS
 PROHIBITED. ANY REPRODUCTION OR TRANSMISSION OF THIS DRAWING
 WITHOUT THE WRITTEN CONSENT OF HIGHLAND ASSOCIATES IS PROHIBITED.
 THE DRAWING IS A PRELIMINARY DESIGN OR CONCEPTUAL DRAWING. THE
 OWNER SHALL BE RESPONSIBLE FOR OBTAINING ALL NECESSARY PERMITS AND
 APPROVALS. THE DRAWING IS NOT TO BE USED FOR CONSTRUCTION. THE
 DRAWING IS THE PROPERTY OF HIGHLAND ASSOCIATES AND SHALL REMAIN
 THE PROPERTY OF HIGHLAND ASSOCIATES.

PROJECT TITLE:



Owego Apalachin School
 District Phase 4
 5 Sheldon Gulle Boulevard - Owego, NY 13827

SCALE:

DRAWING TITLE:

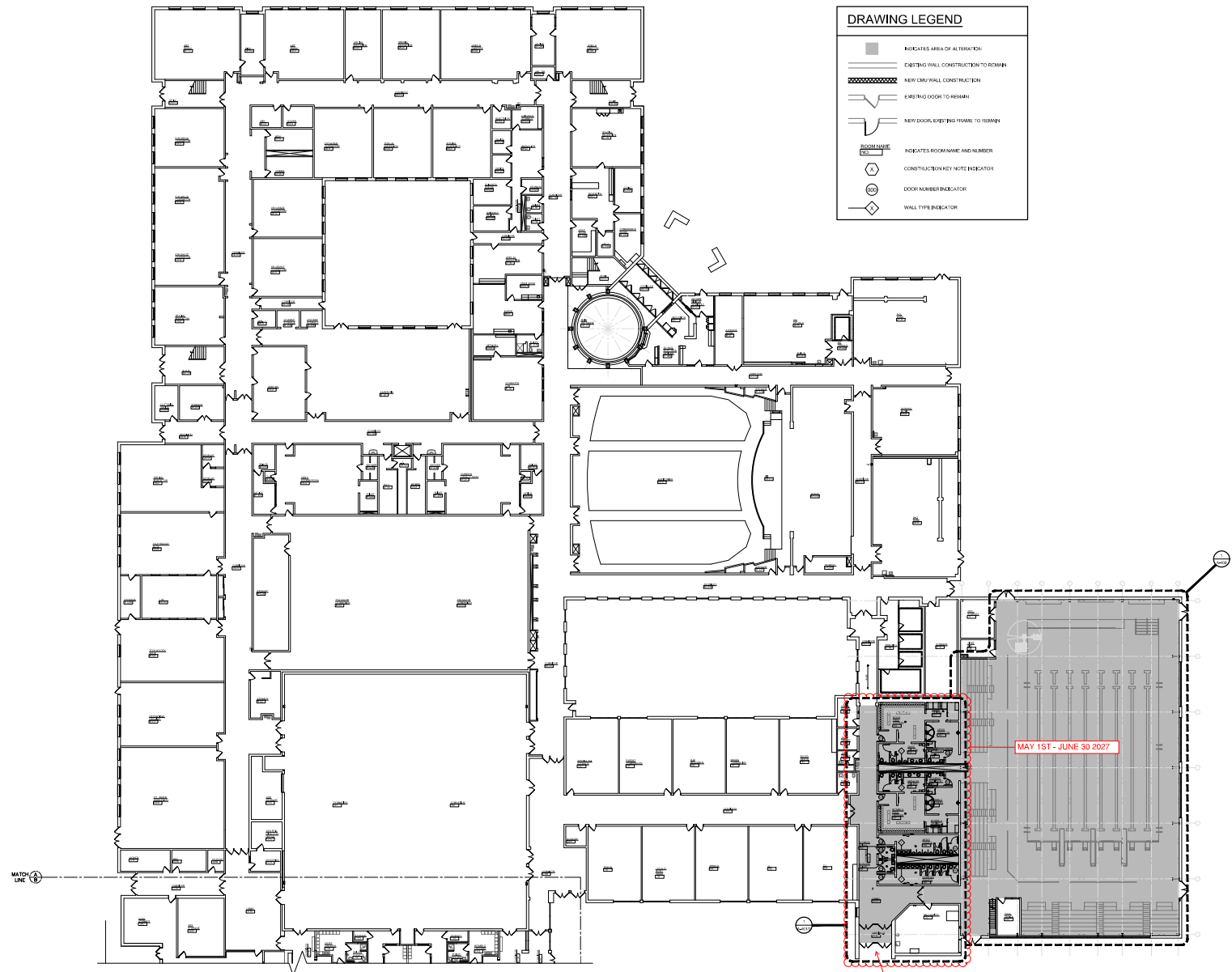
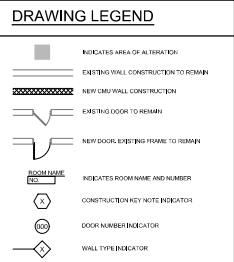
**BLDG. LOGISTICS
 PLAN**

DRAWN BY: CHECKED BY:
 T.M. R.S./C.R.

DATE: PROJECT NO:
 04/10/2025 2024-240P

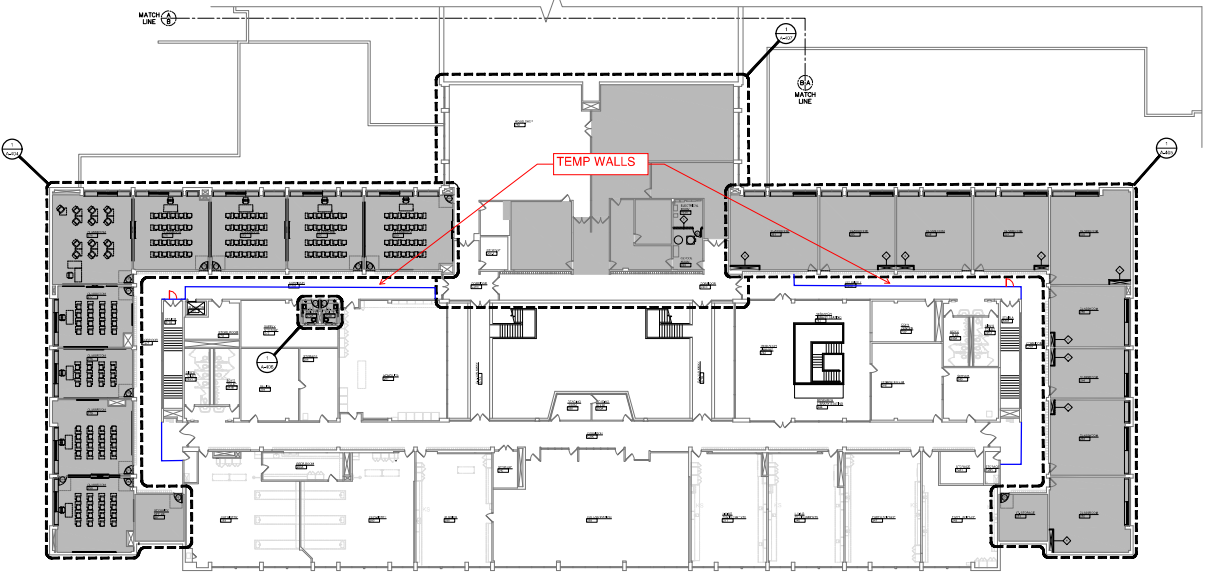
DRAWING NO:

BUILDING: OFA A-101
 O&A FILE: 202404240P PLOT DATE: 4/10/2025



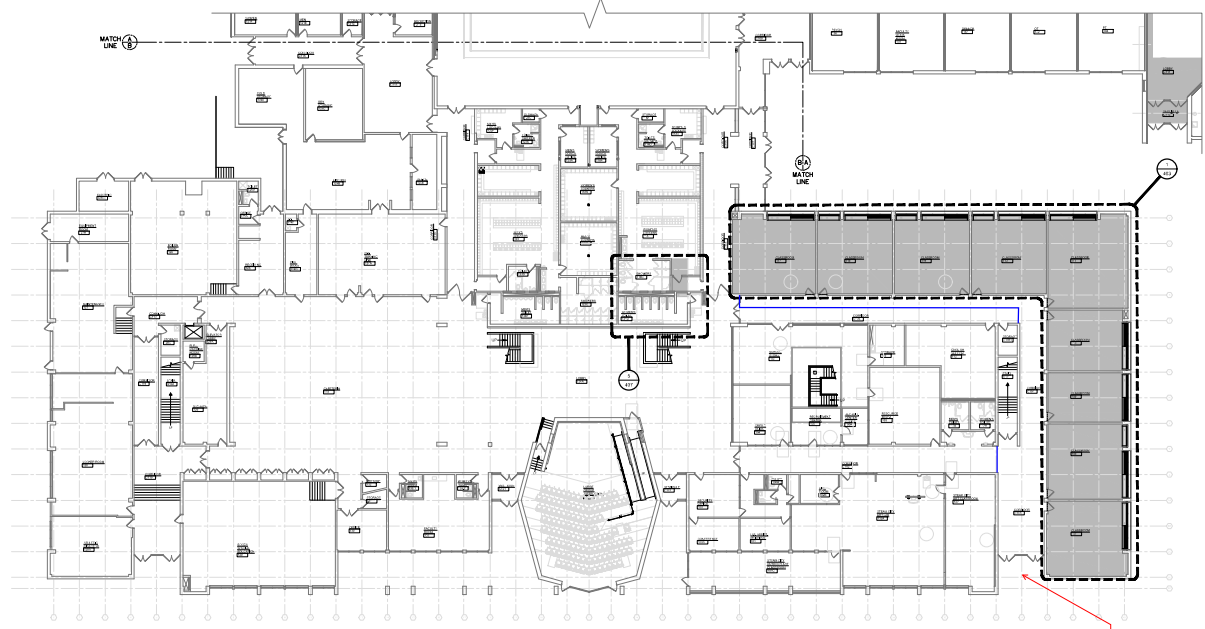
1 MIDDLE SCHOOL 1ST FLOOR - COMPOSITE PLAN
 A-101 SCALE: 1/8"=1'-0"

DRAWING LEGEND	
	INDICATES SCOPE OF WORK
	INDICATES ROOM NAME AND NUMBER
	DOOR NUMBER INDICATOR
	WALL TYPE INDICATOR
	EXISTING WALL CONSTRUCTION TO REMAIN
	NEW PARTITION WALL
	EXISTING DOOR TO REMAIN
	EXISTING DOOR TO REMAIN AND FRAME TO REMAIN, NEW 48x96 DOOR PANEL ABOVE DOOR
	NEW DOOR, EXISTING FRAME TO REMAIN, NEW 48x96 DOOR PANEL ABOVE DOOR
	NEW DOOR AND FRAME



1. PROTECT ALL CORRIDOR ENTRY WAYS
2. CLASSROOMS ON 2ND FLOOR JULY 1 - AUGUST 30TH, 2025
3. 3 ROOMS AT A TIME AFTER SEPTEMBER 1ST

2 HIGH SCHOOL 2ND FLOOR - COMPOSITE PLAN
SCALE: 1/8"=1'-0"

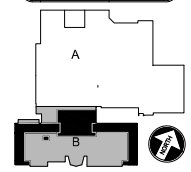


1 HIGH SCHOOL 1ST FLOOR - COMPOSITE PLAN
SCALE: 1/8"=1'-0"

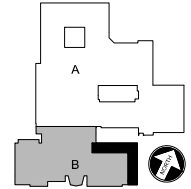


REVISION NO:

BID Documents
April 10, 2026



KEY PLAN
SECOND FLOOR



KEY PLAN
FIRST FLOOR

OFA SED #60-06-01-06-0-009-034

CONTENTS:
THIS DRAWING IS AN INSTRUMENT OF SERVICE UNDER STATE AND FEDERAL LAWS. IT IS THE PROPERTY OF HIGHLAND ASSOCIATES AND IS NOT TO BE REPRODUCED OR TRANSMITTED IN ANY FORM OR BY ANY MEANS, ELECTRONIC OR MECHANICAL, INCLUDING PHOTOCOPYING, RECORDING, OR BY ANY INFORMATION STORAGE AND RETRIEVAL SYSTEM, WITHOUT THE WRITTEN PERMISSION OF HIGHLAND ASSOCIATES. THE USER OF THIS DRAWING SHALL BE RESPONSIBLE FOR OBTAINING ALL NECESSARY PERMITS AND FOR VERIFYING ALL INFORMATION AND DATA. HIGHLAND ASSOCIATES SHALL NOT BE RESPONSIBLE FOR ANY ERRORS OR OMISSIONS IN THIS DRAWING. THE USER SHALL BE RESPONSIBLE FOR OBTAINING ALL NECESSARY PERMITS AND FOR VERIFYING ALL INFORMATION AND DATA. HIGHLAND ASSOCIATES SHALL NOT BE RESPONSIBLE FOR ANY ERRORS OR OMISSIONS IN THIS DRAWING.



Owego Apalachin School
District Phase 4
5 Sheldon Gulte Boulevard - Owego, NY 13827

SCALE:

DRAWING TITLE:
BLDG. LOGISTICS PLAN

DRAWN BY: R.S./C.R.
CHECKED BY:
DATE: 04/10/2025 PROJECT NO: 2024-240P

BUILDING: OFA DRAWING NO: A-102

DATE PLOTTED: 04/10/2025 PLOT DATE: 04/10/2025

Pre-Bid RFIs shall be submitted to:
Aaron Leach aleach@tamcolic.net and
Cheryl Zondlo czondlo@ha-pa.com
Subject line of email to include: OACSD CP Phase 4 PB RFI

HIGHLAND ASSOCIATES / TAMCO MANAGEMENT

Contractor Pre-Bid RFI Form

(Please Type or Print Neatly)

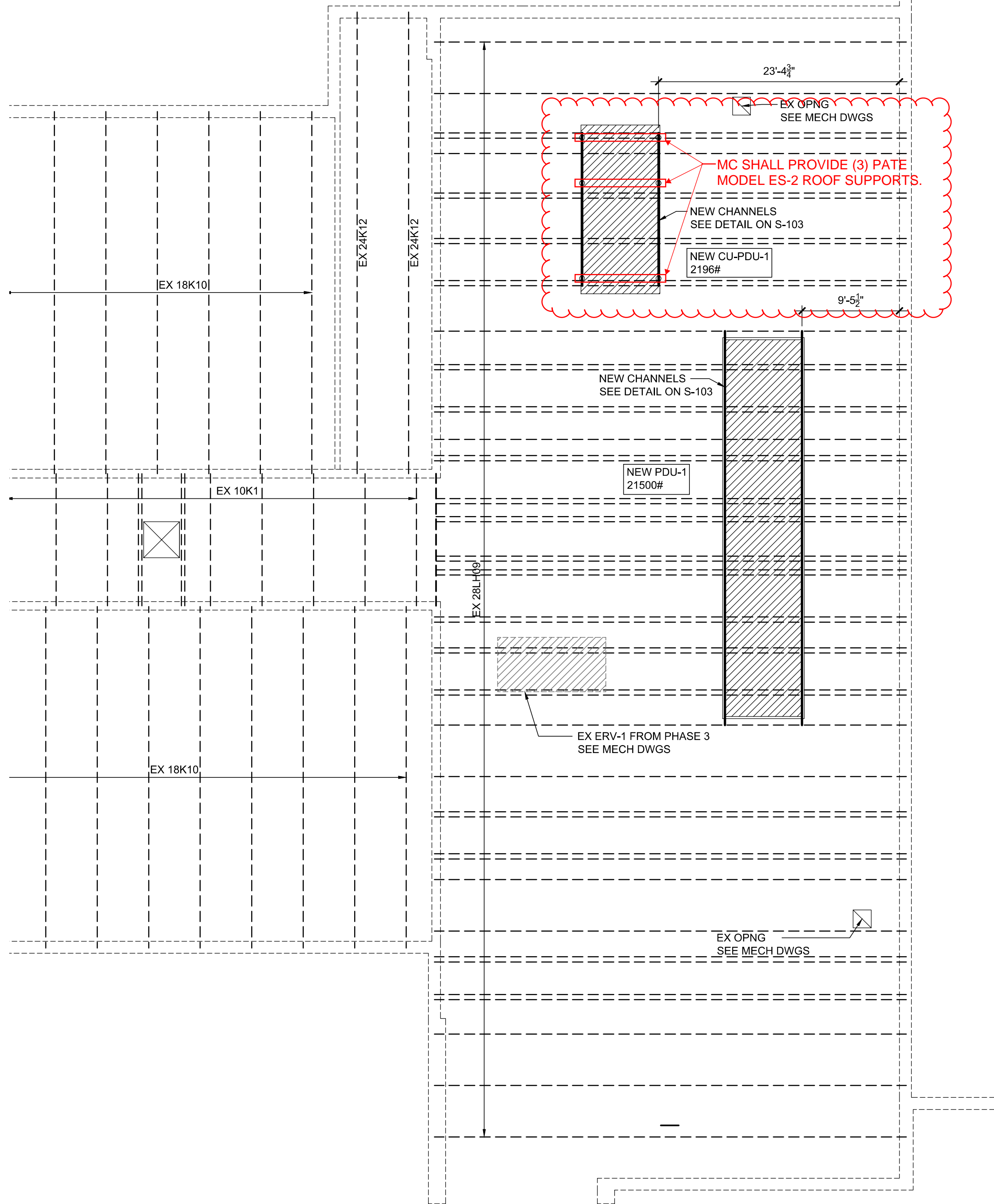
Date: 4-22-26
Company: AB Construction + Roofing Name: John Bennett
Phone #: 607 692 2858 E-mail: john@abcnry.com
Contract(s) bidding on: _____
Drawing Referenced: OFA- M-503 , S-103, S-102.
Spec Section Referenced: _____
Other References: _____

REQUEST: Is the Dehumidifier to be Mounted on
a Roof curb.
Note on S-102 Says See Detail on S-103.
There is NO curb Detail shown on S-103

ANSWER: - **MC SHALL PROVIDE PDU-1 WITH 18" HIGH INSULATED ROOF CURB PER REMARK #7 ON PDU-1 SCHEDULE ON DRAWING OFA M-601.**

- **MC SHALL PROVIDE CU-PDU-1 WITH (3) PATE MODEL ES-2 ROOF SUPPORTS, EACH PERPENDICULAR TO THE TWO C12x20.7 CHANNELS SHOWN ON THE S DRAWINGS. SEE ATTACHED SKETCHES.**

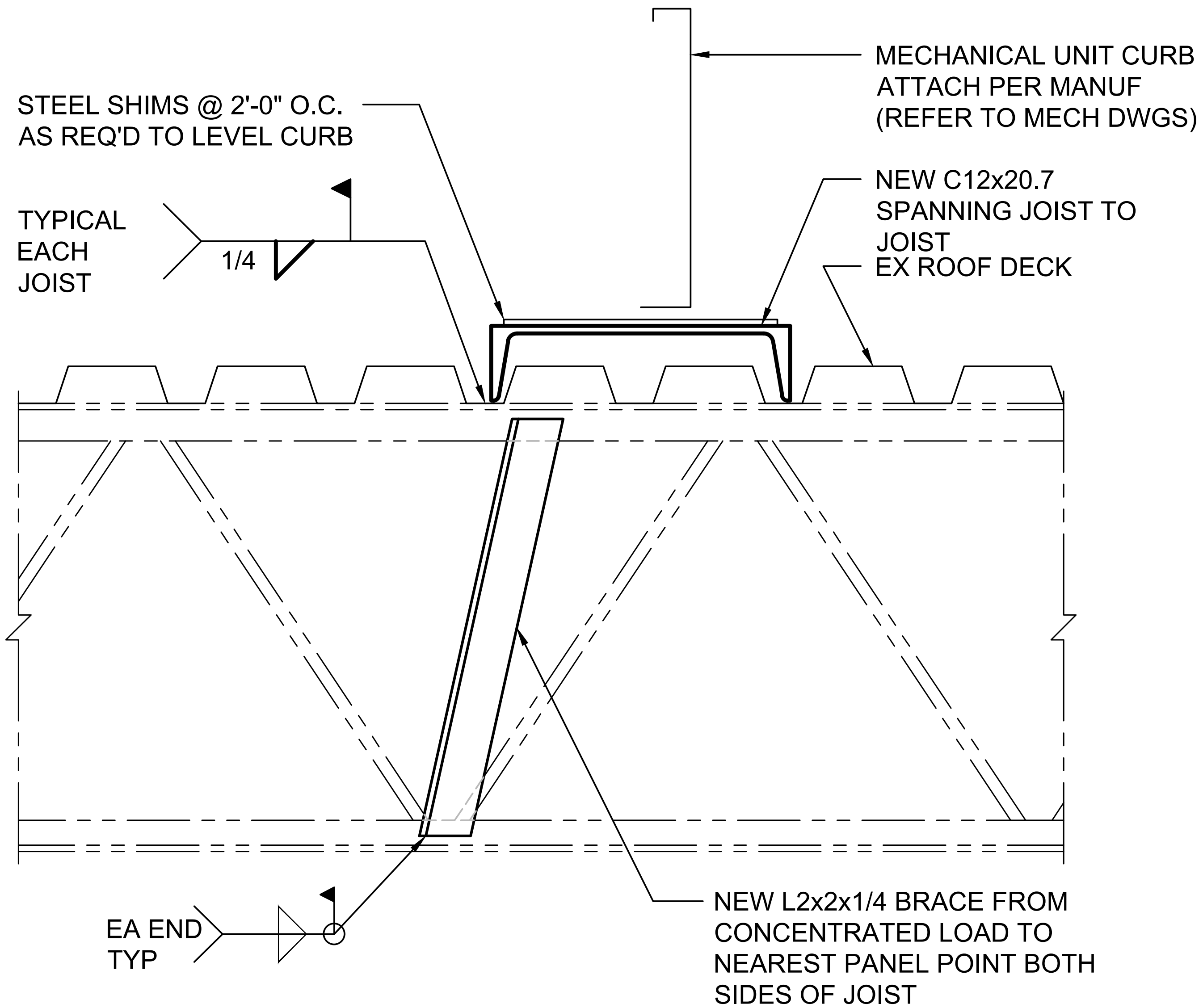
Answered By: MANISH PATEL, HIGHLAND Date: 4-28-26



EXISTING ROOF FRAMING PLAN - PARTIAL PART A

SCALE: 1/8"=1'-0"

• TOP OF STEEL ELEVATION 836'-4" (DATUM) U.O.N.



TYPICAL ROOFTOP MECHANICAL UNIT SUPPORTS

NOT TO SCALE (8)

AB #2

Pre-Bid RFIs shall be submitted to:
Aaron Leach aleach@tamcollc.net and
Cheryl Zondlo czondlo@ha-pa.com
Subject line of email to include: OACSD CP Phase 4 PB RFI

APRIL 10, 2026
BID DOCUMENTS

HIGHLAND ASSOCIATES / TAMCO MANAGEMENT

Contractor Pre-Bid RFI Form

(Please Type or Print Neatly)

Date: 4-28-26

Company: AB Construction + Roofing Name: John Bennett

Phone #: 607 692-2858 E-mail: john@abcerny.com

Contract(s) bidding on: _____

Drawing Referenced: AES A-140

Spec Section Referenced: 075303

Other References: _____

REQUEST: Please clarify what is wanted for roof system.

Notes on Drawing say (Detail 1) 2 Layer flat insulation with HD cover board + 090 EPDM.

Detail 5 - Shows using .060 fleeceback TPO, modified Bituminous Membrane, 1/2" fiberboard, + Tapered

ANSWER: Detail shows going over 3" existing insulation?? Insulation??

Follow Spec 07-53-03 for 90 Mil EPDM complete tear off. Follow Roof system 1 note on the roof plan on A-140. Detail 5 notes are incorrect and is the match the spec and roof system one note. Per existing structural drawings, the roof steel is flat, provide tapered roof insulation to achieve 1/8" min per ft. During construction, if the roof contractor determines existing roof insulation is not wet and recommends to remain and can just add additional roof insulation for the R-30, then a credit can be reviewed at that time.

Answered By: R. SMITH

Date: 4-29-2026

AB #3

Pre-Bid RFIs shall be submitted to:
Aaron Leach aleach@tamcolc.net and
Cheryl Zondlo czondlo@ha-pa.com
Subject line of email to include: OACSD CP Phase 4 PB RFI

APRIL 10, 2026
BID DOCUMENTS

HIGHLAND ASSOCIATES / TAMCO MANAGEMENT

Contractor Pre-Bid RFI Form

(Please Type or Print Neatly)

Date: 4-28-26
Company: AB Construction & Roofing Name: John Bennett
Phone #: 607 692-2858 E-mail: john@abc.rny.com

Contract(s) bidding on: _____

Drawing Referenced: AES A-140

Spec Section Referenced: 075303

Other References: _____

REQUEST: Please clarify what is wanted for the
new roof at AES.

Is the Deck Sloped or is a Tapered insulation
system needed to achieve the desired 1/8" / FT slope

ANSWER: Follow Spec 07-53-03 for 90 Mil EPDM complete tear off. Follow Roof system
1 note on the roof plan on A-140. Detail 5 notes are incorrect and is the
match the spec and roof system one note. Per existing structural drawings,
the roof steel is flat, provide tapered roof insulation to achieve 1/8" min per ft.
During construction, if the roof contractor determines existing roof insulation is
not wet and recommends to remain and can just add additional roof insulation
for the R-30, then a credit can be reviewed at that time.

Answered By: R. SMITH Date: 4-29-2026

AB #4

Pre-Bid RFIs shall be submitted to:
Aaron Leach aleach@tamcollc.net and
Cheryl Zondlo czondlo@ha-pa.com
Subject line of email to include: OACSD CP Phase 4 PB RFI

APRIL 10, 2026
BID DOCUMENTS

HIGHLAND ASSOCIATES / TAMCO MANAGEMENT

Contractor Pre-Bid RFI Form

(Please Type or Print Neatly)

Date: 4-28-26

Company: AB Construction + Roofing Name: John Bennett

Phone #: 607 692 2858 E-mail: john@abcnny.com

Contract(s) bidding on: _____

Drawing Referenced: _____

Spec Section Referenced: 075303

Other References: _____

REQUEST: Would it be acceptable to adhere the HD cover board in lieu of using composite insulation.

If crickets are wanted between the drains the cover board will need to be installed over the crickets. It wouldn't make sense to use composite

ANSWER: in some areas and adhered in others

YES

Answered By: R. SMITH

Date: 4-29-2026

Pre-Bid RFIs shall be submitted to:
Aaron Leach aleach@tamcolle.net and
Cheryl Zondlo czondlo@ha-pa.com

APRIL 10, 2026
BID DOCUMENTS

Subject line of email to include: OACSD CP Phase 4 PB RFI

HIGHLAND ASSOCIATES / TAMCO MANAGEMENT

Contractor Pre-Bid RFI Form

(Please Type or Print Neatly)

Date: _____

Company: _____ **Name:** _____

Phone #: _____ **E-mail:** _____

Contract(s) bidding on: _____

Drawing Referenced: _____

Spec Section Referenced: _____

Other References: _____

REQUEST:

ANSWER:

Answered By: _____

Date: _____

OWEGO APALACHIN CENTRAL SCHOOL DISTRICT
2024 CAPITAL PROJECT PHASE 4

PRE-BID RFI
SECTION 00 22 14

OWEGO FREE ACADEMY / MIDDLE SCHOOL SED#: 60-06-01-06-0-009-034

PAGE 1

APALACHIN ELEMENTARY SCHOOL SED#: 60-06-01-06-0-008-018

HA PN: 2024-240P

Pre-Bid RFIs shall be submitted to:
Aaron Leach aleach@tamcolle.net and
Cheryl Zondlo czondlo@ha-pa.com

APRIL 10, 2026
BID DOCUMENTS

Subject line of email to include: OACSD CP Phase 4 PB RFI

HIGHLAND ASSOCIATES / TAMCO MANAGEMENT

Contractor Pre-Bid RFI Form

(Please Type or Print Neatly)

Date: 4/14/2026

Company: Southern Glass Service Name: Jim Sherwood

Phone #: 607-562-3029 E-mail: jsherwood@southernglassservice.com

Contract(s) bidding on: Sub to CONTRACT NO. 1

Drawing Referenced: OFA A-150 Doors 154, 157, 159, 162

Spec Section Referenced: None

Other References: _____

REQUEST: Will you be providing a Specification for FRP Doors
154, 157, 159, 162?

ANSWER: added spec section 08 17 43 FRP ALUMINUM HYBRID DOORS

Answered By: R. SMITH

Date: 4-29-2026

Pre-Bid RFIs shall be submitted to:
Aaron Leach aleach@tamcolle.net and
Cheryl Zondlo czondlo@ha-pa.com

APRIL 10, 2026
BID DOCUMENTS

Subject line of email to include: OACSD CP Phase 4 PB RFI

HIGHLAND ASSOCIATES / TAMCO MANAGEMENT

Contractor Pre-Bid RFI Form

(Please Type or Print Neatly)

Date: 04/16/2026

Company: Whitmore Fence Name: Greg Hauptfleisch

Phone #: 315-664-9000 E-mail: _____

Contract(s) bidding on: Owego Apalachin School District Phase 4

Drawing Referenced: L9.01

Spec Section Referenced: detail 17

Other References: _____

REQUEST:

I wanted to know what the latch detail was for this gate.
I also had a question about the posts. On the left post, it states a 6" bollard and cap, on the right post it has a 7" post in the ground with an 8" post over the top of it that is part of the gate. Is that 6" bollard correct?

ANSWER:

6-5/8" inside bollard. See attached picture of latch and project submittal.

Answered By: Tim Bonaparte (AOLA)

Date: 4/28/2026

OWEGO APALACHIN CENTRAL SCHOOL DISTRICT
2024 CAPITAL PROJECT PHASE 4

PRE-BID RFI
SECTION 00 22 14

OWEGO FREE ACADEMY / MIDDLE SCHOOL SED#: 60-06-01-06-0-009-034

PAGE 1

APALACHIN ELEMENTARY SCHOOL SED#: 60-06-01-06-0-008-018

HA PN: 2024-240P

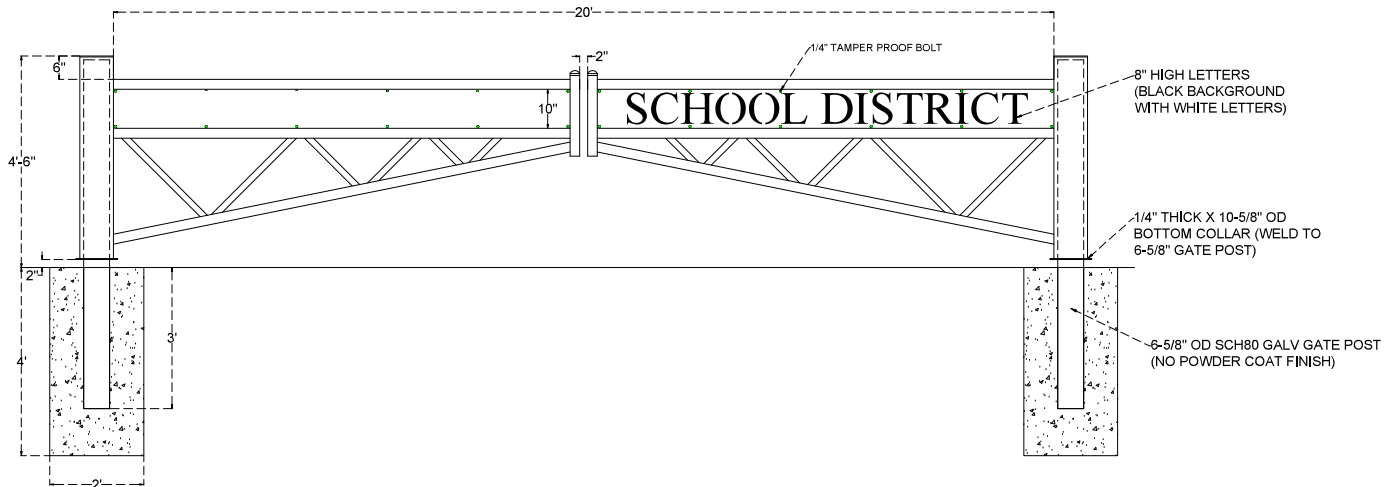


CAUTION

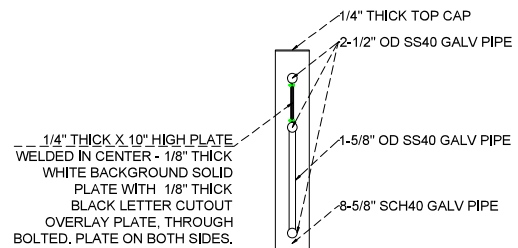
NO
PARKING
ANY
TIME

SCHOOL

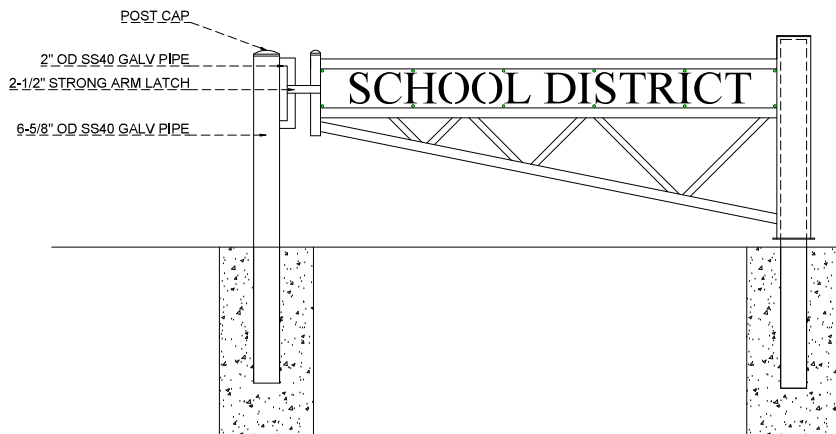
GATE ELEVATION



GATE SIDE VIEW



GATE ELEVATION - LATCH POST DETAIL



NOTES:
- ALL MATERIAL POWDER COATED BLACK

NORTHEAST FENCE & IRON WORKS, INC. 8451 HEGEMAN ST. PHILADELPHIA, PA 19136 PHONE: 215-335-1881 FAX: 215-743-7112		- BARRIER GATE	
NO.	REVISION	DATE	
DRAWN: AP	CHECK: AP	SCALE: NO SCALE	DATE: 8/12/24
			DRAWING NO. OOI
			REVISION #

SECTION 01 23 00 - ALTERNATES

PART 1 - GENERAL

1.1 RELATED DOCUMENTS

- A. Drawings and general provisions of the Contract, including General and Supplementary Conditions and other Division 01 Specification Sections, apply to this Section.

1.2 SUMMARY

- A. Section includes administrative and procedural requirements for alternates.

1.3 DEFINITIONS

- A. Alternate: An amount proposed by bidders and stated on the Bid Form for certain work defined in the bidding requirements that may be added to or deducted from the base bid amount if the Owner decides to accept a corresponding change either in the amount of construction to be completed or in the products, materials, equipment, systems, or installation methods described in the Contract Documents.
 - 1. Alternates described in this Section are part of the Work only if enumerated in the Agreement.
 - 2. The cost or credit for each alternate is the net addition to or deduction from the Contract Sum to incorporate alternates into the Work. No other adjustments are made to the Contract Sum.

1.4 PROCEDURES

- A. References to division or sections of the Specifications to describe the work required by an alternate as indicated are not intended to restrict the work of the alternate to a single contract or trade but to provide reference to that work comprising the major portion of the Alternate. It shall be the responsibility of all Contractors to determine the extent of all the work and materials required by the alternate and to include any additional cost in their proposal for the alternate.
- B. Coordination: Revise or adjust affected adjacent work as necessary to completely integrate work of the alternate into Project.
 - 1. Include, as part of each alternate, miscellaneous devices, accessory objects, and similar items incidental to or required for a complete installation, whether or not indicated as part of alternate.
 - 2. Coordinate related work and modify surrounding work to integrate the Work of each alternate.

- C. The bidder shall enter the amount of the increase or decrease for each alternate in the appropriate column of the bid form, and this amount shall be indicated in figures and also written out in full in the space provided for each alternate.
- D. Execute accepted alternates under the same conditions as other Work of the Contract.
- E. Schedule: A "Schedule of Alternates" Article is included at the end of this Section. Specification Sections referenced in schedule contain requirements for materials necessary to achieve the work described under each alternate.

1.5 ACCEPTANCE OF ALTERNATES

- A. Alternates quoted on Bid Forms will be reviewed and accepted or rejected at the Owego Apalachin Central School District's option. Accepted alternates will be identified in the Owner-Contractor Agreement.

1.6 SELECTION AND AWARD OF ALTERNATIVES

- A. Indicate variation of bid price for alternatives described below and list in bid form document or any supplement to it, which requests a 'difference' in bid price by adding to or deducting from the base bid price.
- B. The Contract will be awarded to the qualified bidder whose total lump sum base bid, together with any alternatives which the Owner may wish to accept, totals the lowest number of dollars.

1.7 SCHEDULE OF ALTERNATES

A. ALTERNATE 01 – OFA MATH WING

All work associated with rooms 269, 270, 273, 275, 276, 277, 278, 279, 280 and 281, demolition, abatement, construction, general, HVAC, plumbing, electrical.

1. Contract No. 1 General Construction
2. Contract No. 2 Mechanical Construction
3. Contract No. 3 Plumbing Construction
4. Contract No. 4 Electrical Construction

B. ALTERNATE 02 – AES ROOFING

All work associated with the roof replacement above the Gymnasium, Auditorium and Stage as designated, demolition, construction, general, HVAC, plumbing, electrical and associated work.

1. Contract No. 1 General Construction
2. Contract No. 2 Mechanical Construction
3. Contract No. 3 Plumbing Construction
4. Contract No. 4 Electrical Construction

C. ALTERNATE 03 – OFA FIELD LIGHTING

All work associated with the field lighting at the OFA Field as designated, demolition, construction, Site, electrical and associated work.

1. Contract No. 4 Electrical Construction
2. Contract No. 5 Site Construction and Playground Construction

D. ALTERNATE 04 – AES CAFETERIA

All work associated with Cafeteria room 203, demolition, abatement, construction, general, HVAC, plumbing, electrical. Note all wall work in the Kitchen 202 side of the wall separating the Cafeteria and the Kitchen is to be part of base bid including all openings, doors, tray returns etc. between the Cafeteria and the Kitchen.

1. Contract No. 1 General Construction
2. Contract No. 2 Mechanical Construction
3. Contract No. 3 Plumbing Construction
4. Contract No. 4 Electrical Construction

E. ALTERNATE 05 – OFA DESERT AIRE POOL DEHUMIDIFICATION

All work associated with furnish install of Pool HVAC unit demolition, construction, general, HVAC, plumbing, electrical.

1. Contract No. 1 General Construction
2. Contract No. 2 Mechanical Construction
3. Contract No. 3 Plumbing Construction
4. Contract No. 4 Electrical Construction

PART 2 - PRODUCTS – NOT USED

PART 3 - EXECUTION – NOT USED

END OF SECTION 01 23 00

Pre-Bid RFIs shall be submitted to:
Aaron Leach aleach@tamcollec.net and
Cheryl Zondlo czondlo@ha-pa.com
Subject line of email to include: OACSD CP Phase 4 PB RFI

HIGHLAND ASSOCIATES / TAMCO MANAGEMENT

Contractor Pre-Bid RFI Form

(Please Type or Print Neatly)

Date: 4/17/26

Company: Streeter Associates Name: Nick

Phone #: 607-734-4151 E-mail: Nfabrizi@streeterassociates.com

Contract(s) bidding on: GC

Drawing Referenced: _____

Spec Section Referenced: AIA Doc A232-2019

Other References: _____

REQUEST: 11.1.4.6 of the AIA A232-2019, the General Contractor is suppose to carry Builders Risk for the project. We will only be able to carry Builders Risk for our work.

Who is to cover the remainder of the prime contractors builders risk?

Can the owner cover the builders risk for the entirety of the project due to multiple prime contractors?

ANSWER: The Owner will carry Builders Risk for the entire project.

Answered By: Cheryl Zondlo

Date: 04/29/2026

Pre-Bid RFIs shall be submitted to:
Aaron Leach aleach@tamcollec.net and
Cheryl Zondlo czondlo@ha-pa.com
Subject line of email to include: OACSD CP Phase 4 PB RFI

HIGHLAND ASSOCIATES / TAMCO MANAGEMENT

Contractor Pre-Bid RFI Form

(Please Type or Print Neatly)

Date: 4/17/26

Company: Streeter Associates Name: Nick

Phone #: 607-734-4151 E-mail: Nfabrizi@streeterassociates.com

Contract(s) bidding on: GC

Drawing Referenced: _____

Spec Section Referenced: _____

Other References: Bid time

REQUEST: _____

Please consider pushing the bid time back to 1pm or 2pm on the 5th of May. 10am makes it rough for everyone.

ANSWER: The Bid Time will be changed to 1:00 PM on May 5th.

Answered By: Cheryl Zondlo

Date: 04/29/2026

Pre-Bid RFIs shall be submitted to:
Aaron Leach aleach@tamcollec.net and
Cheryl Zondlo czondlo@ha-pa.com

APRIL 10, 2026
BID DOCUMENTS

Subject line of email to include: OACSD CP Phase 4 PB RFI

HIGHLAND ASSOCIATES / TAMCO MANAGEMENT

Contractor Pre-Bid RFI Form

(Please Type or Print Neatly)

Date: 4/24/26

Company: Streeter Associates Name: Nick

Phone #: 607-734-4151 E-mail: Nfabrizi@streeterassociates.com

Contract(s) bidding on: GC

Drawing Referenced: A-409 OFA

Spec Section Referenced: _____

Other References: _____

REQUEST: _____

Renovation note 1, states to patch and repair plaster. this note is called out on a handful of pipe penetrations and 2 larger areas. Then the note is also within the room saying typical for all locations. Are there more locations that what is specifically pointed to? Can you please provide square footages for this work? hard to tell how much actually needs to be patched, or provide an allowance for this work? Please advise.

ANSWER: The photos on the drawing indicate the worst areas to be patched. for pricing use 5 s.f. of plaster patching.

Answered By: R. SMITH

Date: 4-30-2026

HIGHLAND ASSOCIATES / TAMCO MANAGEMENT

Contractor Pre-Bid RFI Form

Section 00 22 14

Please Type or Print Neatly

Email to: aleach@tamcollc.net; czondlo@ha-pa.com

WD Pre-Bid RFI No.: 01

Date:	<u>04/27/26</u>	Name:	<u>John Kabat</u>
Company:	<u>W&D Smith Site Development, LLC</u>	Fax Number:	<u>607-692-2705</u>
Telephone Number:	<u>607-692-4204</u>	Email:	<u>jkabat@smithsitedev.com</u>
Contract(s) bidding on:	<u>General Construction</u>		
Drawing Referenced:	<u>AES A-403</u>		
Spec Section Referenced:	<u>01 12 00 - Multiple Contract Summary</u>		
Other References:	<u></u>		

Request:

Please advise what PRIME contract is going to be responsible for the removal of existing fencing and bollards and placement of new 8'-0" high CLF with gates and privacy slats as indicated at the west side of AES per plans 1 & 2 / A-403? Thank you.

ANSWER:

The work described above shall be the responsibility of Contract No. 05 Site Construction.

Answered By: Cheryl Zondlo

Date: 04/29/2026

HIGHLAND ASSOCIATES / TAMCO MANAGEMENT

Contractor Pre-Bid RFI Form

Section 00 22 14

Please Type or Print Neatly

Email to: aleach@tamcolc.net; czondlo@ha-pa.com

WD Pre-Bid RFI No.: 02

Date:	<u>04/27/26</u>	Name:	<u>John Kabat</u>
Company:	<u>W&D Smith Site Development, LLC</u>	Fax Number:	<u>607-692-2705</u>
Telephone Number:	<u>607-692-4204</u>	Email:	<u>jkabat@smithsite-dev.com</u>
Contract(s) bidding on:	<u>General Construction</u>		
Drawing Referenced:	<u>AES A-402</u>		
Spec Section Referenced:	<u>01 12 00 - Multiple Contract Summary</u>		
Other References:	<u>AES</u>		

Request:

Referencing AES A-402 Kitchen Area 1 & 2, RCP 4/A-402, Construction Key Note 2 reads to install "new bathroom spline ceiling". This designation is not used on the plan. It is assumed if applicable to be referencing Toilet Room 202B. On the drawing Toilet 202B has Construction Key Note "1". There is no Finish Schedule to verify intent of ceiling for this room; nor a material finish legend. Please advise. Thank you.

ANSWER:

There is no new spline ceiling tile.

Changed key note text to read as new acoustical ceiling tile in bathroom 202B by the AES cafeteria.

Answered By: T. MUIR

Date: 04/29/2026

HIGHLAND ASSOCIATES / TAMCO MANAGEMENT

Contractor Pre-Bid RFI Form

Section 00 22 14

Please Type or Print Neatly

Email to: aleach@tamcolc.net; czondlo@ha-pa.com

WD Pre-Bid RFI No.: 03

Date:	<u>04/27/26</u>		
Company:	<u>W&D Smith Site Development, LLC</u>	Name:	<u>John Kabat</u>
Telephone Number:	<u>607-692-4204</u>	Fax Number:	<u>607-692-2705</u>
Contract(s) bidding on:	<u>General Construction</u>	Email:	<u>jkabat@smithsitedev.com</u>
Drawing Referenced:	<u>OFA L0.03 and AES L1.01</u>		
Spec Section Referenced:	<u>01 12 00 - Multiple Contract Summary / 01 50 00 - Temporary Facilities</u>		
Other References:	<u>Losistics Plan for OFA and AES</u>		

Request:

Please advise what Prime Contract is going to be responsible for the temporary fence enclosure at each of the locations. Spec Section 01 12 00 - Multiple Contract Summary, Part 1.7 General Construction Contract, A.3.n reads "Enclosure fence for staging area". Part 1.11 Site Construction Contract, A.3.m reads "Site enclosure fence". Section 01 50 00 - Temporary Facilities provides description of fencing but does not advise what contract is responsible. Also the temporary fencing is assumed to be based on the highlighted bold dashed line as shown on the attached as there's no other information to determine what is expected. Please also indicate expectations for gates, man gates and drive gates at each location. Thank you.

ANSWER:

Section 01 12 00 Multiple Contract Summary is the section to reference for Prime Contract assignments of the temporary facilities; therefore General Construction Contract is responsible for fencing of staging area. The logistic plans for both OFA and AES are issued with this addendum.

Answered By: Cheryl Zondlo **Date:** 04/30/2026



OWEGO-APALACHIN CSD - SITE PREPARATION PLAN



HIGHLAND ASSOCIATES
 architecture | engineering | interior design
 102 Highland Avenue
 Clarks Summit, PA 15411
 814-348-4234
 www.highlandassociates.com
 New York • Pennsylvania

appel osborne
 landscape architecture
 BUFFALO | SYRACUSE | TRIO

BID Documents
 April 10, 2026

OFA SED #60-06-01-06-0-009-034

NOTICE: This drawing is a site preparation plan for the Owego-Apalachin School District Phase 4 project. It is intended for informational purposes only and does not constitute a contract. The contractor shall be responsible for verifying all field conditions and existing utilities before construction begins. Any changes to this plan must be approved in writing by the design professional.



Owego Apalachin School
 District Phase 4
 5 Sheldon Cook Boulevard • Owego, NY 13827



SITE PREPARATION PLAN

DESIGNED BY:	CHECKED BY:
DATE:	PROJECT NO.:
04/10/2026	2024-240P
DRAWING NO.:	

OFA L0.03



BID Submission
 April 10, 2026

AES SED #60-06-01-06-0-008-018

NOTES:
 1. THESE PLANS ARE A PARTIAL SUBMITTAL UNDER STATE OF NEW YORK REGS. 207.10 AND 207.11. THE CONTRACTOR SHALL BE RESPONSIBLE FOR OBTAINING ALL NECESSARY PERMITS AND APPROVALS FROM THE APPROPRIATE AGENCIES.
 2. THE CONTRACTOR SHALL BE RESPONSIBLE FOR OBTAINING ALL NECESSARY PERMITS AND APPROVALS FROM THE APPROPRIATE AGENCIES.
 3. THE CONTRACTOR SHALL BE RESPONSIBLE FOR OBTAINING ALL NECESSARY PERMITS AND APPROVALS FROM THE APPROPRIATE AGENCIES.

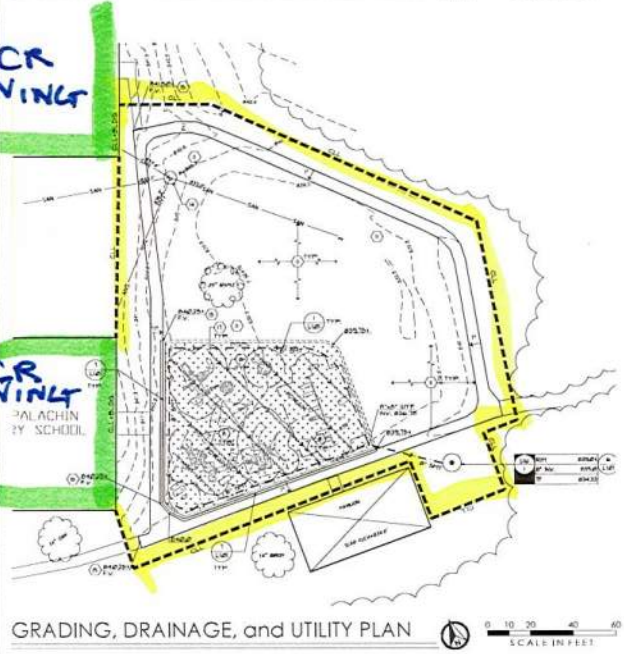
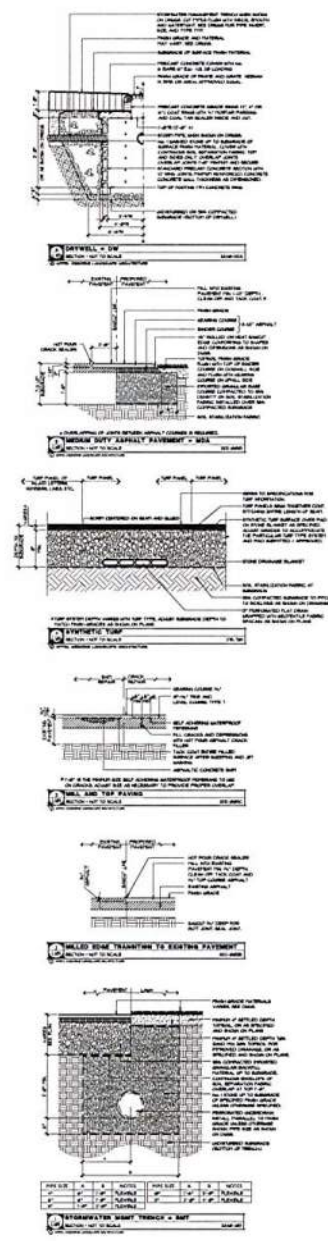
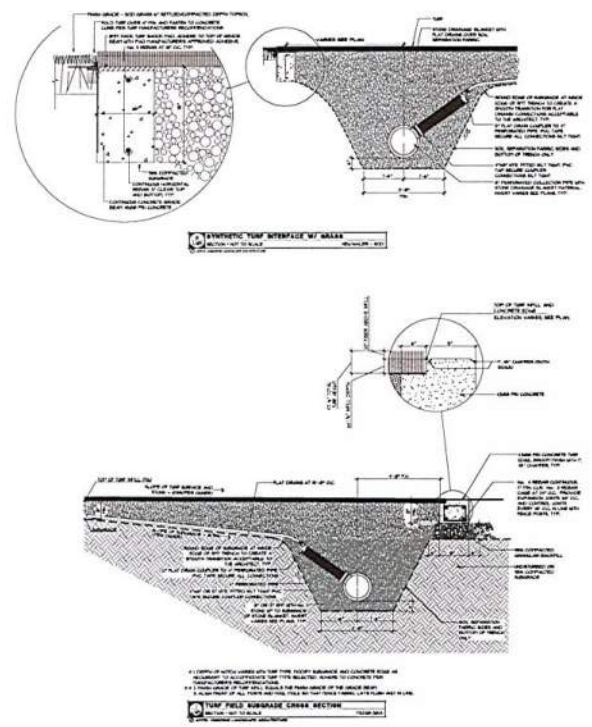


Owego Apalachin School District Phase 4
 405 Pennsylvania Avenue, Apalachin, NY 13827



SITE IMPROVEMENT PLANS

Drawn By:	MS	Checked By:	TB
Date:	4/10/2026	Project No.:	2024-240P
Revision:		Revision:	
AES	L1.01		



HIGHLAND ASSOCIATES / TAMCO MANAGEMENT

Contractor Pre-Bid RFI Form

Section 00 22 14

Please Type or Print Neatly

Email to: aleach@tamcollc.net; czondlo@ha-pa.com

WD Pre-Bid RFI No.: 04

Date:	<u>04/27/26</u>	Name:	<u>John Kabat</u>
Company:	<u>W&D Smith Site Development, LLC</u>	Fax Number:	<u>607-692-2705</u>
Telephone Number:	<u>607-692-4204</u>	Email:	<u>jkabat@smithsitedev.com</u>
Contract(s) bidding on:	<u>General Construction</u>		
Drawing Referenced:	<u>OFA A-150</u>		
Spec Section Referenced:	<u>Not Provided</u>		
Other References:	<u>08 41 00 - Alum. Framed Entrances and Storefronts</u>		

Request:

At OFA there are four FRP doors to be provided per the Door Schedule on A-150. Openings are 154, 157, 159, and 162. At each of these locations the existing HM frame is to be re-used. There is no specification section found for FRP doors, nor reference in the Aluminum Framed Entrances and Storefronts (Spec 08 41 00). Please provide a specifications for these doors. Thank you.

ANSWER:

added spec section 08 17 43 FRP ALUMINUM HYBRID DOORS

Answered By: R. SMITH **Date:** 4-29-2026

HIGHLAND ASSOCIATES / TAMCO MANAGEMENT

Contractor Pre-Bid RFI Form

Section 00 22 14

Please Type or Print Neatly

Email to: aleach@tamcollc.net; czondlo@ha-pa.com

WD Pre-Bid RFI No.: 05

Date:	<u>04/27/26</u>	Name:	<u>John Kabat</u>
Company:	<u>W&D Smith Site Development, LLC</u>	Fax Number:	<u>607-692-2705</u>
Telephone Number:	<u>607-692-4204</u>	Email:	<u>jkabat@smithsitedev.com</u>
Contract(s) bidding on:	<u>General Construction</u>		
Drawing Referenced:	<u>OFA S-104</u>		
Spec Section Referenced:	<u></u>		
Other References:	<u></u>		

Request:

Drawing OFA S-104 - Existing Pool Roof Framing Plan - Partial Part A, is provided. Aside from dimensions and column lines along with some general notes, there's no other information. Is there supposed to be anything shown on this drawing that'll be applicale to the General Prime Contract or other prime contracts?

ANSWER:

THIS IS THE EXISTING ROOF FRAMING PLAN FOR THE NATATORIUM PROVIDED TO INDICATE THE APPROXIMATE LOCATION OF THE PURLINS.

Answered By: ERIC D. McANDREW, PE

Date: 30 APR 2026

HIGHLAND ASSOCIATES / TAMCO MANAGEMENT

Contractor Pre-Bid RFI Form

Section 00 22 14

Please Type or Print Neatly

Email to: aleach@tamcollc.net; czondlo@ha-pa.com

WD Pre-Bid RFI No.: 06

Date:	<u>04/27/26</u>	Name:	<u>John Kabat</u>
Company:	<u>W&D Smith Site Development, LLC</u>	Fax Number:	<u>607-692-2705</u>
Telephone Number:	<u>607-692-4204</u>	Email:	<u>jkabat@smithsitedev.com</u>
Contract(s) bidding on:	<u>General Construction</u>		
Drawing Referenced:	<u>N/A</u>		
Spec Section Referenced:	<u>00 41 16 - Bid Form and 01 23 00 - Alternates</u>		
Other References:	<u>N/A</u>		

Request:

Request for confirmation. The intention is for all Alternates per 01 23 00 - Alternates, to be ADD alternates - correct? Specification Section 01 23 00 - Alternates reads in various parts "the amount to be added to or deducted from". The bid form does read "ADDITIVE ALTERNATES" on page 2. Thank you for confirming.

ANSWER:

CORRECT. ALL ALTERNATES ARE ADDITIVE ALTERNATES.

Answered By: Cheryl Zondlo

Date: 04/28/2026

HIGHLAND ASSOCIATES / TAMCO MANAGEMENT

Contractor Pre-Bid RFI Form

Section 00 22 14

Please Type or Print Neatly

Email to: aleach@tamcollc.net; czondlo@ha-pa.com

WD Pre-Bid RFI No.: 07

Date:	<u>04/27/26</u>	Name:	<u>John Kabat</u>
Company:	<u>W&D Smith Site Development, LLC</u>	Fax Number:	<u>607-692-2705</u>
Telephone Number:	<u>607-692-4204</u>	Email:	<u>jkabat@smithsitedev.com</u>
Contract(s) bidding on:	<u>General Construction</u>		
Drawing Referenced:	<u>OFA A-403, OFA A-404, OFA A-405</u>		
Spec Section Referenced:	<u></u>		
Other References:	<u>Asbestos Abatement</u>		

Request:

Demolition Plan Key Notes on drawings OFA A-403 (English Wing), A-404 (Mathematics Wing), and A-405 (Soc Sci Wing) all reference to "conduct abatement under window-wall casework, reference the abatement drawings and specs" or similar. There is presently no abatement drawings or specifications included with the bidding documents. Please advise. Thank you.

ANSWER:

SPECIFICATIONS AND DRAWINGS FOR ABATEMENT WORK ARE INCLUDED IN PROJECT MANUAL VOLUME 5 - ABATEMENT.

Answered By: Cheryl Zondlo

Date: 04/27/2026

HIGHLAND ASSOCIATES / TAMCO MANAGEMENT

Contractor Pre-Bid RFI Form

Section 00 22 14

Please Type or Print Neatly

Email to: aleach@tamcollc.net; czondlo@ha-pa.com

WD Pre-Bid RFI No.: 08

Date:	04/27/26		
Company:	W&D Smith Site Development, LLC	Name:	John Kabat
Telephone Number:	607-692-4204	Fax Number:	607-692-2705
Contract(s) bidding on:	General Construction	Email:	jkabat@smithsitedev.com
Drawing Referenced:	OFA A-404		
Spec Section Referenced:	078446 - Fire Resistive Joint Systems, 092216 - Non-Structural Metal Framing, 092900 - Gypsum Board,		
Other References:	Alternate No. 1 - Math Wing		

Request:

Referencing OFA A-404, Enlarged Mathematics Wing RCP. Ceiling Key Notes, Note 4 reads to install new 1 hour rated shaft wall from 12" below the existing structural beam that rests along the existing 8" CMU wall up to underside of deck. Does this work occur as part of the Base Bid, or is this work to be part of Alternate No. 1 (assumed to be an Add Alternate). Please advise. Thank you.

ANSWER:

Fire rating of top of wall at the Math Wing is to be part of Alternate 1.
- Also revise text in mentioned key note to state "sheet OFA-A-100" instead of "G-003,".

Answered By: R. SMITH

Date: 4-29-2026

HIGHLAND ASSOCIATES / TAMCO MANAGEMENT

Contractor Pre-Bid RFI Form

Section 00 22 14

Please Type or Print Neatly

Email to: aleach@tamcollc.net; czondlo@ha-pa.com

WD Pre-Bid RFI No.: 10

Date:	<u>04/27/26</u>		
Company:	<u>W&D Smith Site Development, LLC</u>	Name:	<u>John Kabat</u>
Telephone Number:	<u>607-692-4204</u>	Fax Number:	<u>607-692-2705</u>
Contract(s) bidding on:	<u>General Construction</u>	Email:	<u>jkabat@smithsitedev.com</u>
Drawing Referenced:	<u>OFA A-408, A-200, A-201, A-300</u>		
Spec Section Referenced:	<u>011200 - Multiple Contract Summary, 013000 - Admin Requirements, 013216 - Construction Prog. Sched.</u>		
Other References:	<u>Pool Area - Access for Multi Contracts</u>		

Request:

Although may be considered a means and methods issue, the fact is the work in the pool area will require multiple Prime Contracts and multiple trades within the contracts to have access at and near the underside of the roof structure to complete the work shown. Per Spec Section 013216 - Construction Progress Schedule, Part 1.6.A for OFA reads for the work within the pool area to occur during the period May 1st to June 30, 2027 (8.5 weeks +/-). It's uncertain if all trades will be able to complete their work in the needed sequence within this duration, however it is certain the work will not occur within it if each Prime Contract is responsible for providing their own access to the space to complete the work. Question - should a Prime Contract be assigned the responsibility of providing an elevated working platform within the pool outline only - 60' x 100' (not above the pool deck area as lifts can be used) for all contractors to work from, with each Prime and their subcontractors being responsible to receive proper training for use of and sign a liability waiver for the right to use the elevated platform? A defined duration should be identified for the designated Prime Contractor to figure, along with a given elevation for the working platform to be set at - ie. +23'-0" above pool deck elevation. The same should be considered for protection of the pool deck floor area for each Prime Contract's use as will be necessary - ie. powered lifts or other means to access higher elevations necessary to complete their work. Please consider and advise. Thank you.

ANSWER:

Each Prime Contractor shall be responsible for their own means and methods for their work at the pool roof.

The General Construction Contract is responsible for protection of the existing floor in the pool area with 1/2" plywood and of the existing pool with heavy-duty reinforced plastic sheeting.

Answered By: Cheryl Zondlo

Date: 04/30/2026

Pre-Bid RFIs shall be submitted to:
Aaron Leach aleach@tamcollec.net and
Cheryl Zondlo czondlo@ha-pa.com
Subject line of email to include: OACSD CP Phase 4 PB RFI

HIGHLAND ASSOCIATES / TAMCO MANAGEMENT

Contractor Pre-Bid RFI Form

(Please Type or Print Neatly)

Date: 4/21/26

Company: Smith Site Development Name: Chris Clark

Phone #: 607-692-4204 E-mail: chrisclark@smithsitedev.com

Contract(s) bidding on: _____

Drawing Referenced: L0.03 and L9.02

Spec Section Referenced: _____

Other References: _____

REQUEST: _____

1) Drawing L0.03 note 20 is referring to camera scoping but just points to structures, not really existing lines. Can we get a clarification on this?

2) On L9.02 please confirm that detail 5/L9.02 represent the footings for the tension netting. It shows 9' deep but the elevation above shows them to be 8' deep. Please clarify.

ANSWER: 1.) Note 20 is meant to have the Contractor inspect the existing storm system, in this area, to verify free flowing condition and integrity before connecting new storm pipe to this system. Contractor should pay attention to Specification 33 30 01 Site Sanitary, 2.5 Sanitary Line Cleaning & Scoping for 1,000 linear feet of sanitary pipe scoping to determine exact location, size, type, condition, etc. of existing sanitary system prior to ordering materials or start of work.

2.) 9'-0" deep min total depth from Finished Grade. (5'-0" embedment / sleeve depth from curb, then 4'-0" min to bottom of footing), all to be verified by Contractor's NYS PE as specified in Specification Section 32 31 02, and submitted to Architect for review and approval.

Answered By: Tim Bonaparte (AOLA)

Date: 4/26/2026

Pre-Bid RFIs shall be submitted to:
Aaron Leach aleach@tamcollec.net and
Cheryl Zondlo czondlo@ha-pa.com
Subject line of email to include: OACSD CP Phase 4 PB RFI

HIGHLAND ASSOCIATES / TAMCO MANAGEMENT

Contractor Pre-Bid RFI Form

(Please Type or Print Neatly)

Date: 4/24/26

Company: Smith Site Development Name: Chris Clark

Phone #: 607-692-4204 E-mail: chrisclark@smithsitedev.com

Contract(s) bidding on: _____

Drawing Referenced: _____

Spec Section Referenced: 01-5-0-00 Temporary Facilities / 01-12-00 Scope of Work

Other References: _____

REQUEST: _____

1) Temporary Facilities specification lists in material subsection 2.1, A. Chain Link Fencing.

Scope of Work lists Site Enclosure fencing in the Sitework scope. In the last two projects that we had for Owego-Apalachin CSD we did not install temporary site enclosure fence. There also is no site enclosure fence shown on the drawings. Does the school wish to have site enclosure fencing (CLF) both at the High School and Elementary around the new sitework?

ANSWER: Also if chain link enclosure fence is required do we need to have more then one gate at each facility for emergency egress, or is one gate sufficient?

HA RESPONSE: Site Contractor is responsible for temporary site enclosure fencing. Logistic plans for OFA and AES are issued with this addendum.

Answered By: Cheryl Zondlo

Date: 04/30/2026

Pre-Bid RFIs shall be submitted to:
Aaron Leach aleach@tamcolle.net and
Cheryl Zondlo czondlo@ha-pa.com

APRIL 10, 2026
BID DOCUMENTS

Subject line of email to include: OACSD CP Phase 4 PB RFI

HIGHLAND ASSOCIATES / TAMCO MANAGEMENT

Contractor Pre-Bid RFI Form

(Please Type or Print Neatly)

Date: 4/24/26

Company: Smith Site Development Name: Chris Clark

Phone #: 607-692-4204 E-mail: chrisclark@smithsitedev.com

Contract(s) bidding on: _____

Drawing Referenced: _____

Spec Section Referenced: 01-12-00 Scope of Work

Other References: _____

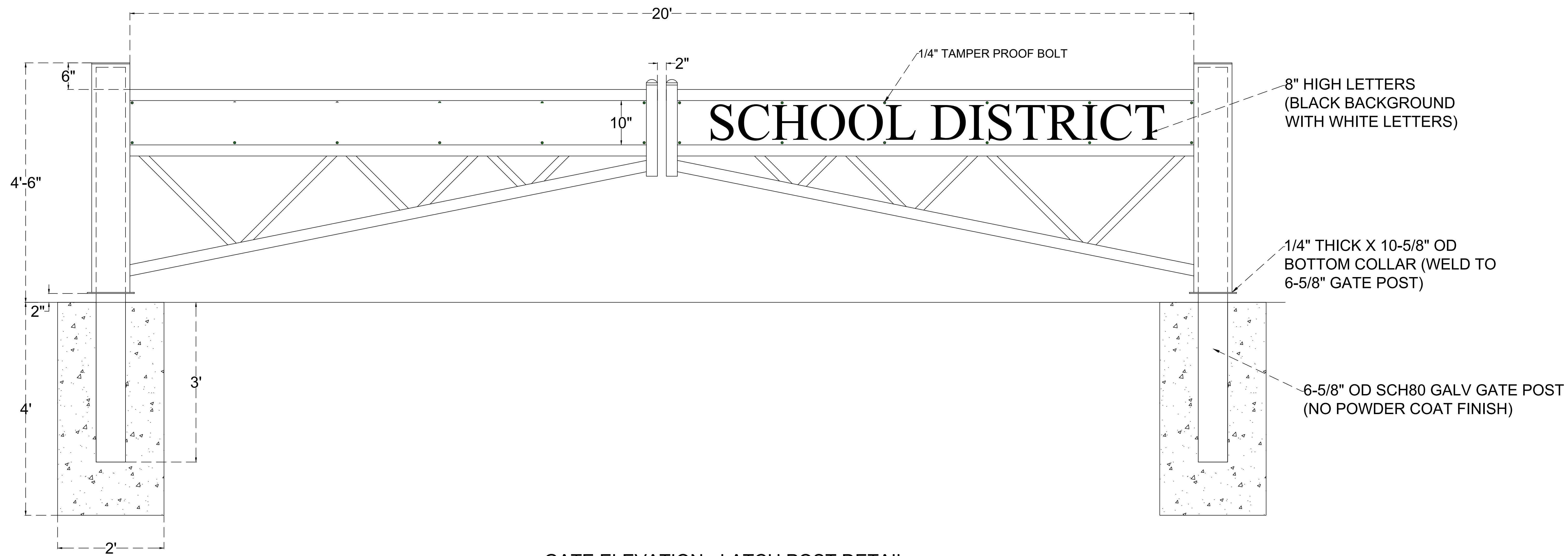
REQUEST: _____

1) The electrical scope of work states the the electrician is to supply conduit and wire, while Sitework contractor provides excavation and backfill for the electrical contract. But the Sitework contradicts this and states that the Sitework contractor is to supply conduit and pull string? Could you clarify whose scope of work the conduit and pull string is actually in? Also is the electrical trenching detail to have concrete encasement for all new conduits?

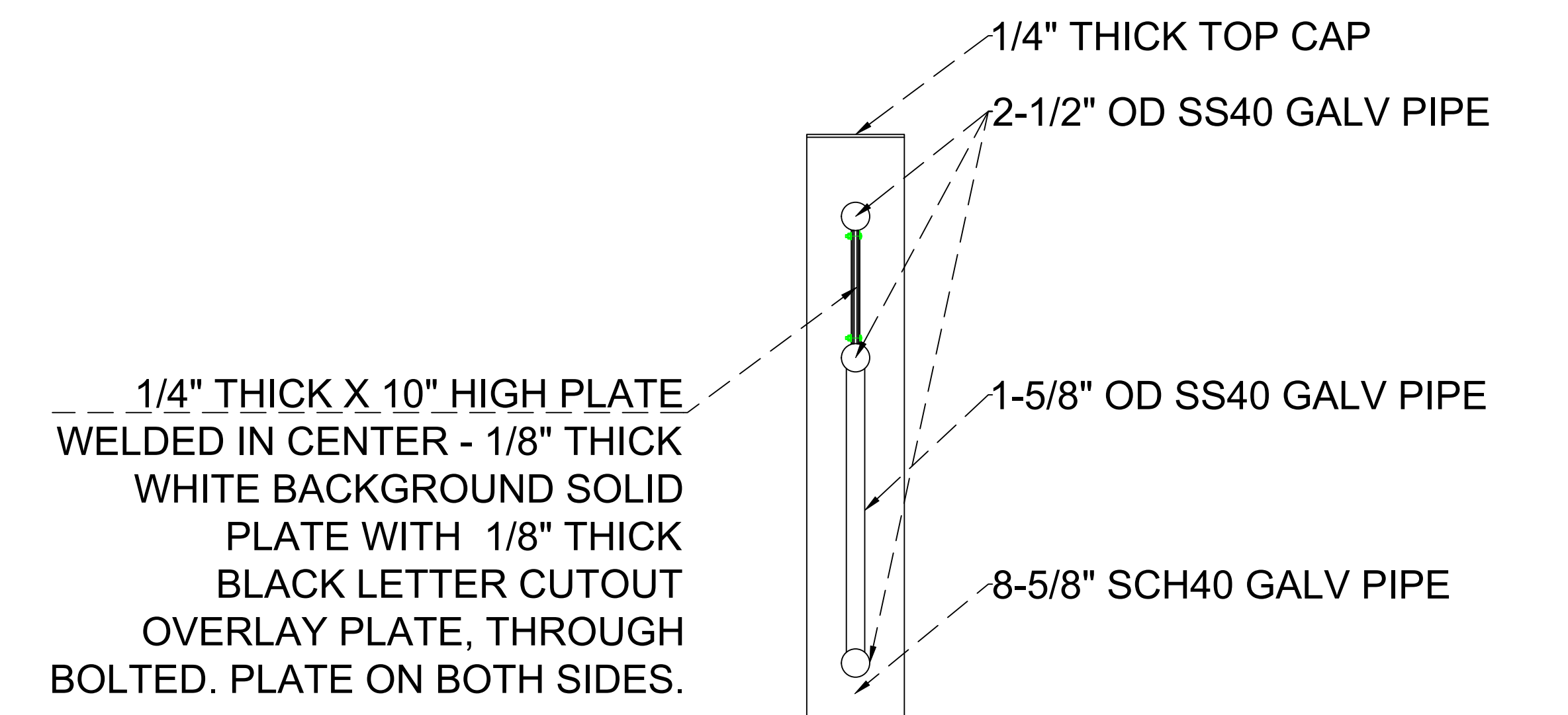
ANSWER **Per the "L" drawings the Site Contractor is responsible for the trenching, conduit, pull strings, communication boxes, backfill, and compaction of the electrical trench INSIDE the field fence. Any direction for electrical conduit / trenching OUTSIDE the field fence do be as directed by Highland Associates.**

Answered By: Tim Bonaparte (AOLA) Date: 4/28/2026

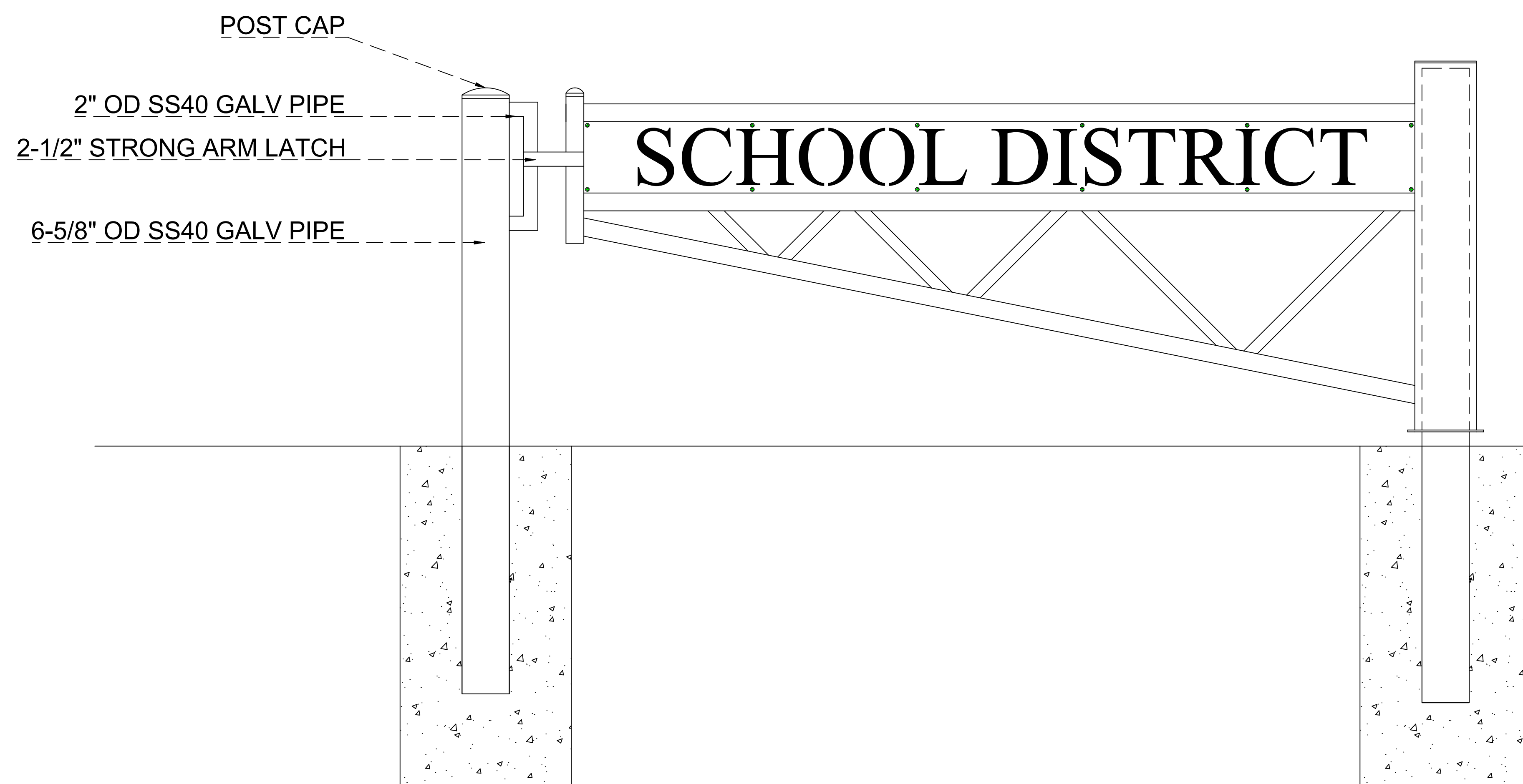
GATE ELEVATION



GATE SIDE VIEW



GATE ELEVATION - LATCH POST DETAIL



NOTES:
- ALL MATERIAL POWDER COATED BLACK

NORTEAST FENCE & IRON WORKS, INC. 8451 HEGERMAN ST. PHILADELPHIA, PA 19136 PHONE: 215-335-1881 FAX: 215-743-7112				- BARRIER GATE	
NO. REVISION		DATE			
DRAWN	CHECK	SCALE	DATE	DRAWING NO.	REVISION
AP	AP	NO SCALE	8/12/24	001	#
SHEET 01 OF 01					