

Newfield Central School District
Capital Project – Phase III Additions & Alterations
HUNT 2712-008
SED Number: 61-09-01-04-0-001-017
61-09-01-04-0-005-013

ADDENDUM NO. 4

July 3, 2018

The following Addendum (Addenda) shall be considered a part of the contract documents prepared by HUNT EAS; P.C. dated June 23, 2017, Issued for Bid May 29, 2018.

Project Manual Sections Issued by this Addendum:

None

Drawings Issued by this Addendum:

AD4-HS-A1 – RAILING DETAILS
AD4-HS-A2 – RAILING DETAILS
AD4-HS-A3 – RAILING DETAILS
AD4-HS-A4 – RAILING DETAILS
AD4-HS-A5 – RAILING DETAILS
AD4-HS-A6 – FAUX PERFORMANCE BALCONY
AD4-HS-A7 – PERFORMANCE BALCONY
AD4-HS-A8 – LIGHTBOX COLUMNS
AD4-HS-TL6 – ACCENT LIGHTING SYMBOLS KEY
AD4-HS-TL7 – ONE LINE DIAGRAM
AD4-ES-T1 – FIRST FLOOR TECHNOLOGY PLAN – AREA ‘B’
AD4-ES-T2 – FIRST FLOOR TECHNOLOGY PLAN – AREA ‘C’
AD4-HS-T3 – FIRST FLOOR TECHNOLOGY PLAN – AREA ‘B’
AD4-HS-T4 – SECOND FLOOR TECHNOLOGY PLAN – AREA ‘B’
HS-TL1.2 – THEATRICAL LIGHTING SYSTEM UPPER LEVEL CONTROL PLAN
HS-TL2.2 – THEATRICAL LIGHTING POWER & NETWORK DISTRO FLOW DIAGRAM

Clarifications:

None

Revisions to Project Manual:

ITEM AD 3-1 Refer to Specification Section 09 51 00 – Suspended Acoustical Ceilings

DELETE paragraph 3.2, L in its entirety.

ITEM AD 3-2 Refer to Specification Section 23 09 93 – Sequence of Operations for HVAC Controls

AMEND paragraph 3.16 to read” CABINET HEATERS:

- A. Single temperature electric room sensor set at 60 degrees F maintains constant space temperature by controlling automatic control valve on hot water return pipe through the DDC.
- B. Elastomeric Cellular Foam Insulation: The cabinet heater outdoor air damper shall fully open in occupied mode and shall remain fully-closed in unoccupied mode.

Page 2

- C. Fire shut down shall be provided by the EC via the fire alarm system and by the DDC. When unit is shut down, the outside air dampers shall close, and the mixing dampers shall position to 100% return air.”

ITEM AD 3-3 Refer to Specification Section 23 52 16 – Stainless-Steel Condensing Boilers

ADD paragraph 2.6 to read” BUFFER TANK (FOR THE BOILER IN HIGH SCHOOL)

- A. Manufacturers:
 - 1. Aerco.
- B. Tank: Welded steel, ASME labeled for working pressure of 150 psig, HLW stamped, angle support legs, taps for accessories, threaded connections of stainless steel, access manhole.
- C. Lining:
 - 1. Cement lined with 5-year non-pro-rated warranty.
- D. Openings: Up to 3 inches, stainless steel threaded; over 4 inches, flanged.
- E. Vertical storage tank:
 - 1. Overall Length: 73.5inches.
 - 2. Diameter: 36 inches diameter.
 - 3. Nominal capacity: 210 gal.
- F. Support: Angle legs for vertical tank by unit manufacturer.
- G. Insulation: Factory furnished 3-inch glass fiber insulation with steel jacket.
- H. Accessories
 - 1. ASME Pressure Relief Valve.
 - 2. Pressure and Temperature Gauge.
 - 3. 1 inlet and 1 outlet.”

Revisions to Drawings:

ITEM AD 3-4 Refer to HS-L2.0 – SITE IMPROVEMENT PLAN

AMEND location of new transformer, vault, and associated sitework/grading to be 70' West of location shown on drawing. General Trades Contractor to provide all excavation and back-filling for vault provided by Electrical Contractor.

ITEM AD 3-5 Refer to all HS-A SERIES DRAWINGS

DELETE all text that reads “ORNAMENTAL RAIL; SIMILAR TO JULIUS BLUM 537 CROSS SECTION SCROLL – 1/2” X 5/16” ENDS – 1/2” X 1/2””

ITEM AD 3-6 Refer to all HS-A1.7 – ROOF PLAN – AREA A, B & C

AMEND roof legend, text that reads “KEE PVC MEMBRANE” to read “EPDM MEMBRANE”

ITEM AD 3-7 Refer to all HS-A5.1 – INTERIOR ELEVATIONS

AMEND detail 1 with AD4-HS-A6 – FAUX PERFORMANCE BALCONY issued by this addendum.

ITEM AD 3-8 Refer to all HS-A5.1 – INTERIOR ELEVATIONS

Page 3

AMEND detail 1 & 2, acrylic column covers to be columns as shown on AD4-HS-A8 – LIGHTBOX COLUMNS issued by this addendum.

ITEM AD 3-9 Refer to all HS-A5.1 – INTERIOR ELEVATIONS

AMEND detail 3 with AD4-HS-A7 – PERFORMANCE BALCONY issued by this addendum.

ITEM AD 3-10 Refer to Drawing HS-A6.2 - STAIR PLANS & SECTIONS

AMEND detail 13 with detail 1 on AD4-HS-A1 -RAILING DETAILS issued by this addendum.

ITEM AD 3-11 Refer to Drawing HS-A6.2 - STAIR PLANS & SECTIONS

AMEND detail 15 with detail 2 on AD4-HS-A1 -RAILING DETAILS issued by this addendum.

ITEM AD 3-12 Refer to Drawing HS-A6.2 - STAIR PLANS & SECTIONS

AMEND detail 11 with detail 1 on AD4-HS-A3 -RAILING DETAILS issued by this addendum.

ITEM AD 3-13 Refer to Drawing HS-A6.3 - DETAILS

AMEND detail 15 with detail 1 on AD4-HS-A2 -RAILING DETAILS issued by this addendum.

ITEM AD 3-14 Refer to Drawing HS-A6.3 - DETAILS

AMEND detail 6 with detail 2 on AD4-HS-A3 -RAILING DETAILS issued by this addendum.

ITEM AD 3-15 Refer to Drawing HS-A6.3 - DETAILS

AMEND detail 17 with detail 1 on AD4-HS-A4 -RAILING DETAILS issued by this addendum.

ITEM AD 3-16 Refer to Drawing HS-A6.3 - DETAILS

AMEND detail 16 with detail 1 on AD4-HS-A5 -RAILING DETAILS issued by this addendum.

ITEM AD 3-17 Refer to Drawing HS-TL1.2 – THEATRICAL LIGHTING SYSTEM UPPER LEVEL CONTROL PLAN

DELETE sheet in its entirety

ADD “HS-TL1.2 – THEATRICAL LIGHTING SYSTEM UPPER LEVEL CONTROL PLAN” issued by this addendum.

ITEM AD 3-18 Refer to Drawing HS-TL2.1 – THEATRICAL LIGHTING SYSTEM SINGLE LINE DIAGRAM

DELETE flow diagram as shown on AD4-HS-TL7 – ONE LINE DIAGRAM

ADD one line diagrams as shown on AD4-HS-TL7 – ONE LINE DIAGRAM

ITEM AD 3-19 Refer to Drawing HS-TL2.2 – THEATRICAL LIGHTING POWER & NETWORK DISTRO FLOW DIAGRAM

Page 4

DELETE sheet in its entirety

ADD "HS-TL1.2 – THEATRICAL LIGHTING POWER & NETWORK DISTRO FLOW DIAGRAM."
Issued by this addendum.

ITEM AD 3-20 Refer to Drawing HS-TL4.2 – THEATRICAL LIGHTING SYSTEM NOTES, KEYS & SYMBOLS

ADD to symbols key, symbol shown on AD4-HS-TL6 – ACCENT LIGHTING SYMBOLS KEY issued by this addendum.

ITEM AD 3-21 Refer to Drawing HS-E1.2 – FIRST FLOOR POWER PLAN – AREA B

ADD the following note to toilet room 126B: "Provide dedicated 20a, 120v circuit from panel FF to hand dryer. Provide 3-#12, ½"C and a 20/1 breaker in the panel."

ITEM AD 3-22 Refer to Drawing HS-E1.3 – FIRST FLOOR POWER PLAN – AREA C

ADD the following note to toilet room 118B: "Provide dedicated 20a, 120v circuit from panel P1 to hand dryer. Provide 3-#12, ½"C and a 20/1 breaker in the panel."

ITEM AD 3-23 Refer to Drawing HS-E1.8 – PARTIAL SITE ELECTRICAL PLAN

AMEND the location of the new transformer and pad to be installed 70' further to the west from its current location shown on HS-E1.8. Adjacent to the transformer shall be a separate CT cabinet and meter per NYSEG's standard. Coordinate work with NYSEG prior to construction.

ITEM AD 3-24 Refer to Drawing HS-E2.2 – FIRST FLOOR LIGHTING & FA PLAN – AREA B

AMEND lighting layout in high school main office suite per AD2-HS-A2. Remove existing light fixtures and install type "A2" 2x2's per AD2-HS-A2 (29 total). In each room provide a vacancy sensor, dimming switch (replacing the existing toggle switch) and associated dimming cabling. Branch circuit homerun to be reused.

ITEM AD 3-25 Refer to Drawing HS-H2.5 – SECOND FLOOR PIPING PLAN – AREA B

AMEND the two sets of two glycol pipes (serving Gym FTRs off of main pipes from STORAGE 201A plan North wall up towards GYM) that are shown as new work to be existing and remaining. The size of all these pipes are 1 ¼".

ITEM AD 3-26 Refer to Drawing ES-A2.1 thru ES-A2.4

DELETE RCP DRAWING NOTE "11" in its entirety.

ITEM AD 3-27 Refer to Drawing ES-H3.2 – SCHEDULES

DELETE note 3 from entire CABINET UNIT HEATER SCHEDULE.

ITEM AD 3-28 Refer to Drawing HS-H3.2 – SCHEDULES

DELETE note 3 from entire CABINET UNIT HEATER SCHEDULE.

Page 5

ITEM AD 3-29

**Refer to Drawing ES-T1.4 – FIRST FLOOR
TECHNOLOGY PLAN – AREA ‘B’**

ADD Scope shown in note 5 on addendum sheet AD4-ES-T1 – First Floor Technology Plan – Area ‘B’

ITEM AD 3-30

**Refer to Drawing ES-T1.5 – FIRST FLOOR
TECHNOLOGY PLAN – AREA ‘C’**

ADD Scope shown in note 5 on addendum sheet AD4-ES-T2 – First Floor Technology Plan – Area ‘C’

ITEM AD 3-31

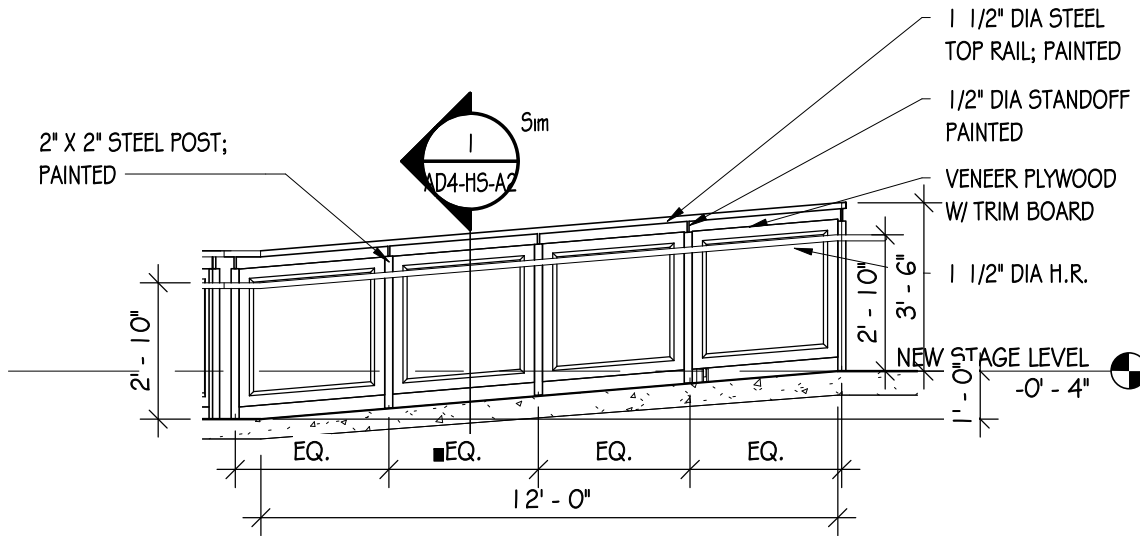
**Refer to Drawing HS-T1.3 – FIRST FLOOR
TECHNOLOGY PLAN – AREA ‘B’**

ADD Scope shown in note 6 on addendum sheet AD4-HS-T3 – First Floor Technology Plan – Area ‘B’

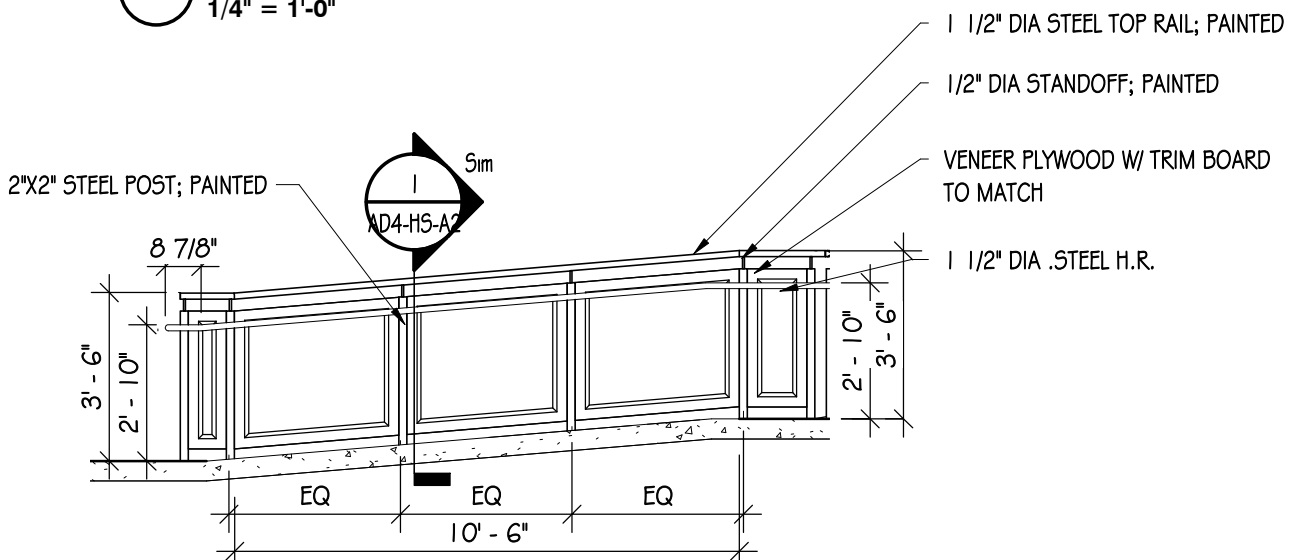
ITEM AD 3-32

**Refer to Drawing HS-T.6 – SECOND FLOOR
TECHNOLOGY PLAN – AREA ‘B’**

ADD Scope shown in note 6 on addendum sheet AD4-HS-T4 – First Floor Technology Plan – Area ‘B’

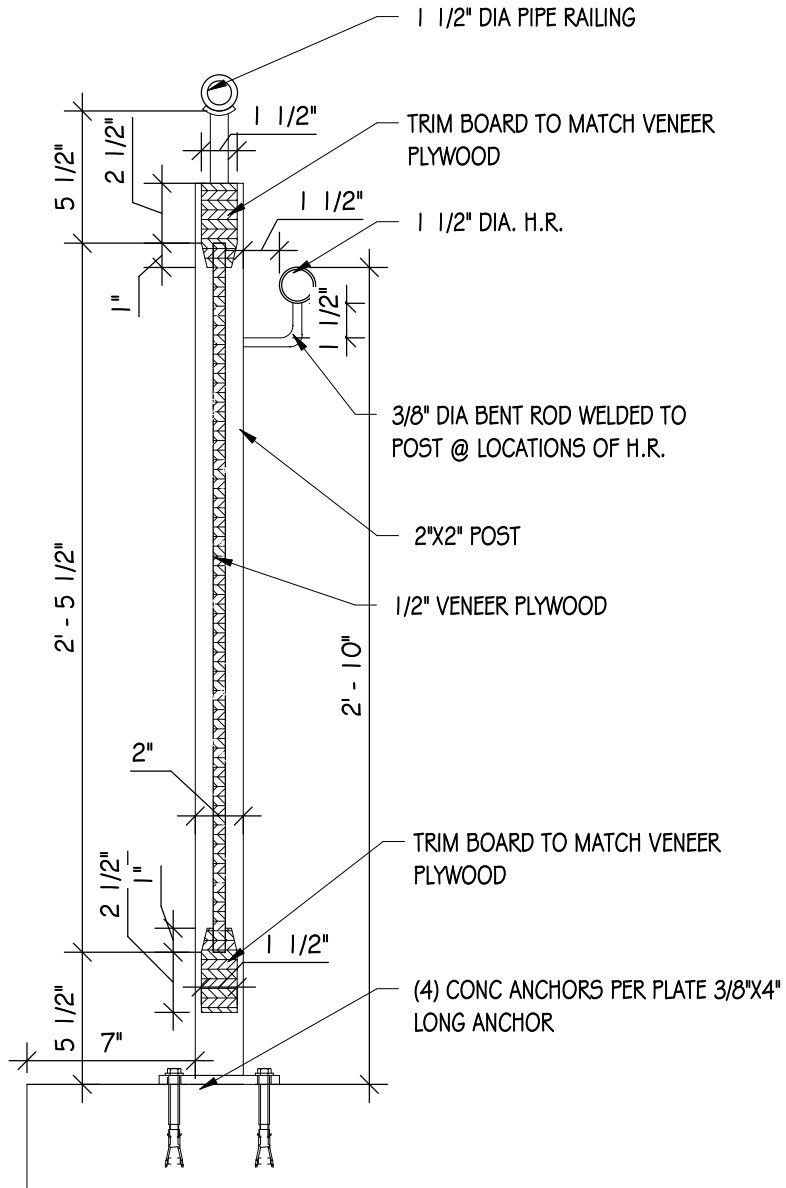


2 RAMP SECTION C - STAGE RAMP
 1/4" = 1'-0"



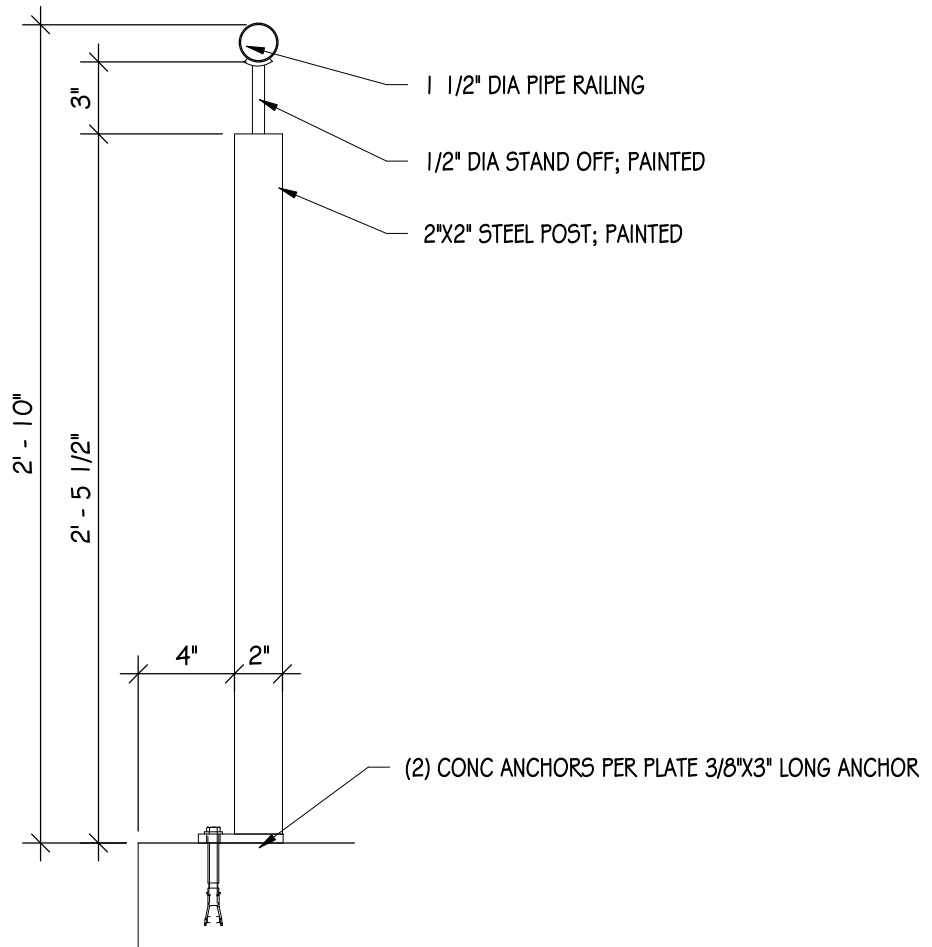
1 RAMP SECTION A - STAGE RAMP
 1/4" = 1'-0"

RAILING DETAILS NEWFIELD CENTRAL SCHOOL DISTRICT CAPITAL PROJECT PHASE III ADDS. & ALTS. 247 MAIN STREET, NEWFIELD, NY 14867	Copyright: 2018	HUNT ENGINEERS ARCHITECTS SURVEYORS 100 Hunt Center Horseheads, New York 14845 P: 607-358-1000 F: 607-358-1800 Offices: Rochester Horseheads Towanda	AD4-HS-A1
		DATE: 7/31/18	PROJECT NO: 2712.008

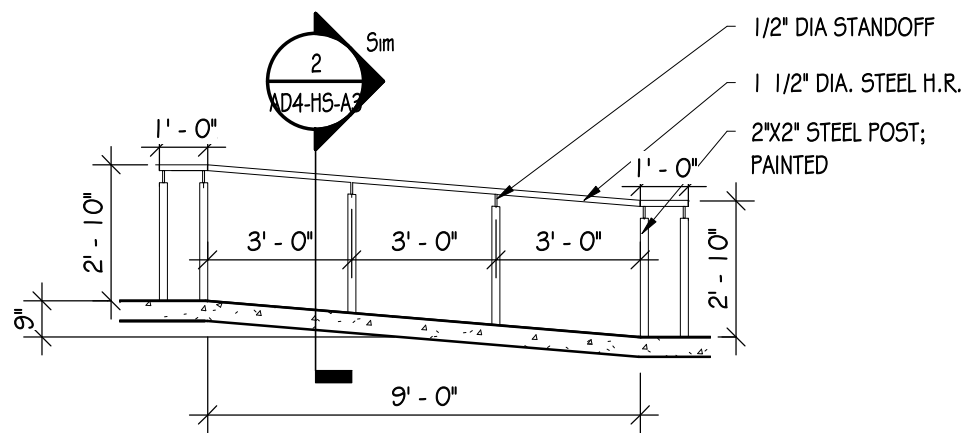


1 RAILING BALUSTRADE - B
 1 1/2" = 1'-0"

RAILING DETAILS	HUNT ENGINEERS ARCHITECTS SURVEYORS 100 Hunt Center Horseheads, New York 14845 P: 607-358-1000 F: 607-358-1800 Offices: Rochester Horseheads Towanda	AD4-HS-A2
NEWFIELD CENTRAL SCHOOL DISTRICT CAPITAL PROJECT PHASE III ADDS. & ALTS. 247 MAIN STREET, NEWFIELD, NY 14867		DATE: 07/01/18 PROJECT NO: 2712.008

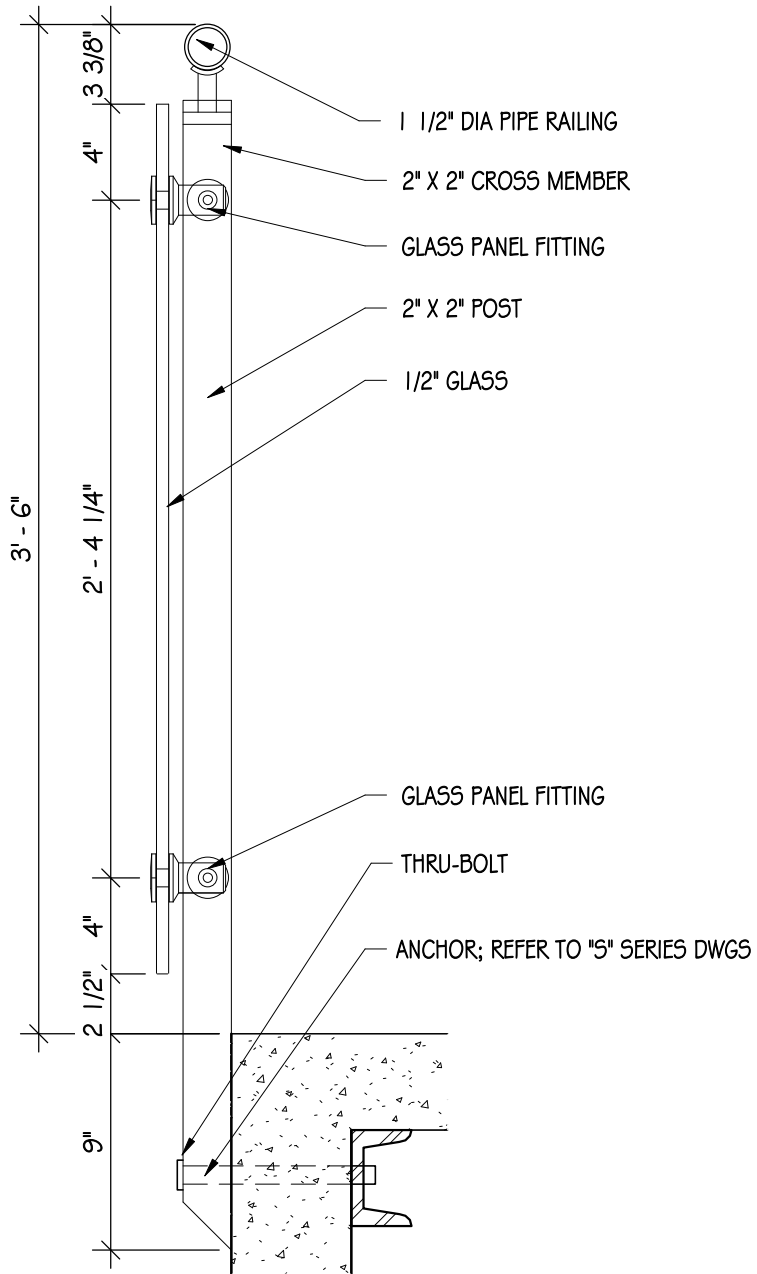


2 RAILING BALUSTRADE - A
 1 1/2" = 1'-0"



1 RAMP SECTION - E
 1/4" = 1'-0"

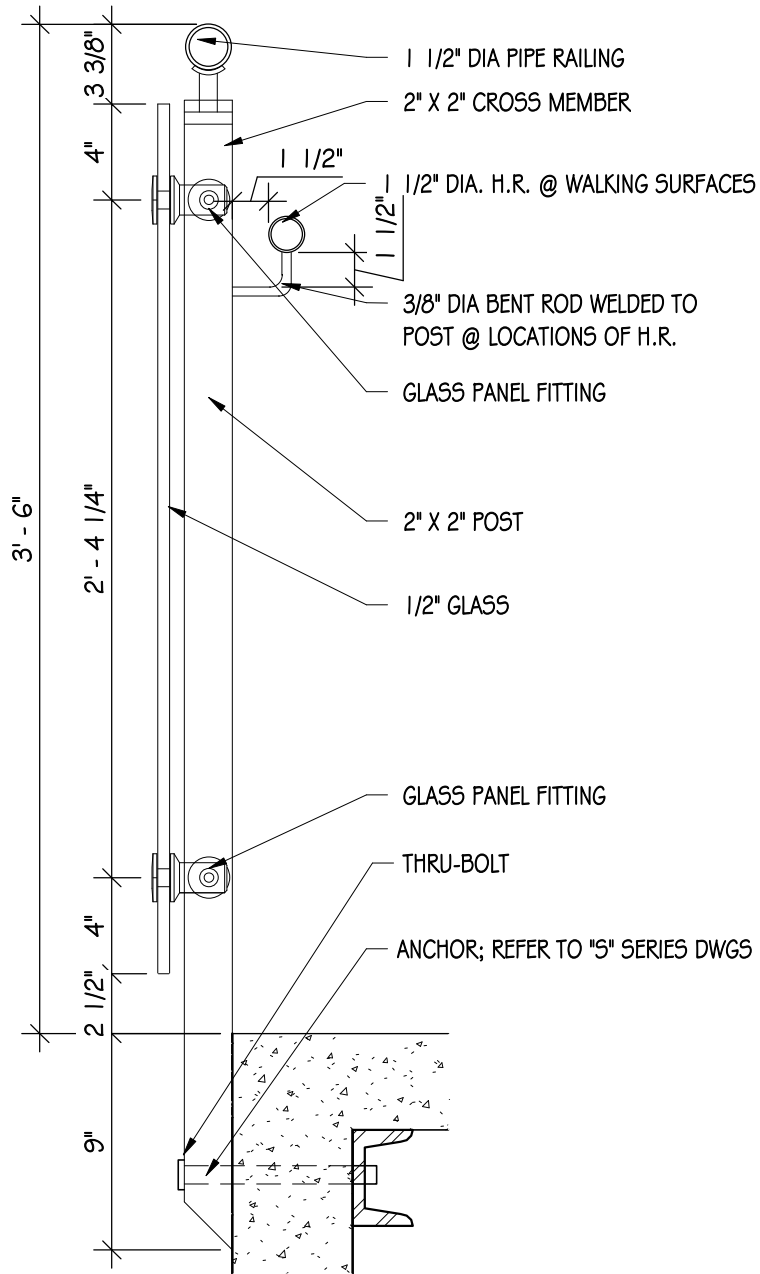
RAILING DETAILS	HUNT ENGINEERS ARCHITECTS SURVEYORS 100 Hunt Center Horseheads, New York 14845 P: 607-358-1000 F: 607-358-1800 Offices: Rochester Horseheads Towanda	AD4-HS-A3
NEWFIELD CENTRAL SCHOOL DISTRICT CAPITAL PROJECT PHASE III ADDS. & ALTS. 247 MAIN STREET, NEWFIELD, NY 14867		DATE: 7/31/18 PROJECT NO: 2712.008




1 RAILING BALUSTRADE - D
 1 1/2" = 1'-0"

RAILING DETAILS	HUNT ENGINEERS ARCHITECTS SURVEYORS 100 Hunt Center Horseheads, New York 14845 P: 607-358-1000 F: 607-358-1800 Offices: Rochester Horseheads Towanda	AD4-HS-A4
NEWFIELD CENTRAL SCHOOL DISTRICT CAPITAL PROJECT PHASE III ADDS. & ALTS. 247 MAIN STREET, NEWFIELD, NY 14867		DATE: 07/01/18 PROJECT NO: 2712.008

Copyright: 2018



1 RAILING BALUSTRADE - C
 1 1/2" = 1'-0"

RAILING DETAILS	 HUNT ENGINEERS ARCHITECTS SURVEYORS 100 Hunt Center Horseheads, New York 14845 P: 607-358-1000 F: 607-358-1800 Offices: Rochester Horseheads Towanda	AD4-HS-A5
NEWFIELD CENTRAL SCHOOL DISTRICT CAPITAL PROJECT PHASE III ADDS. & ALTS. 247 MAIN STREET, NEWFIELD, NY 14867		DATE: 07/02/18 PROJECT NO: 2712.008

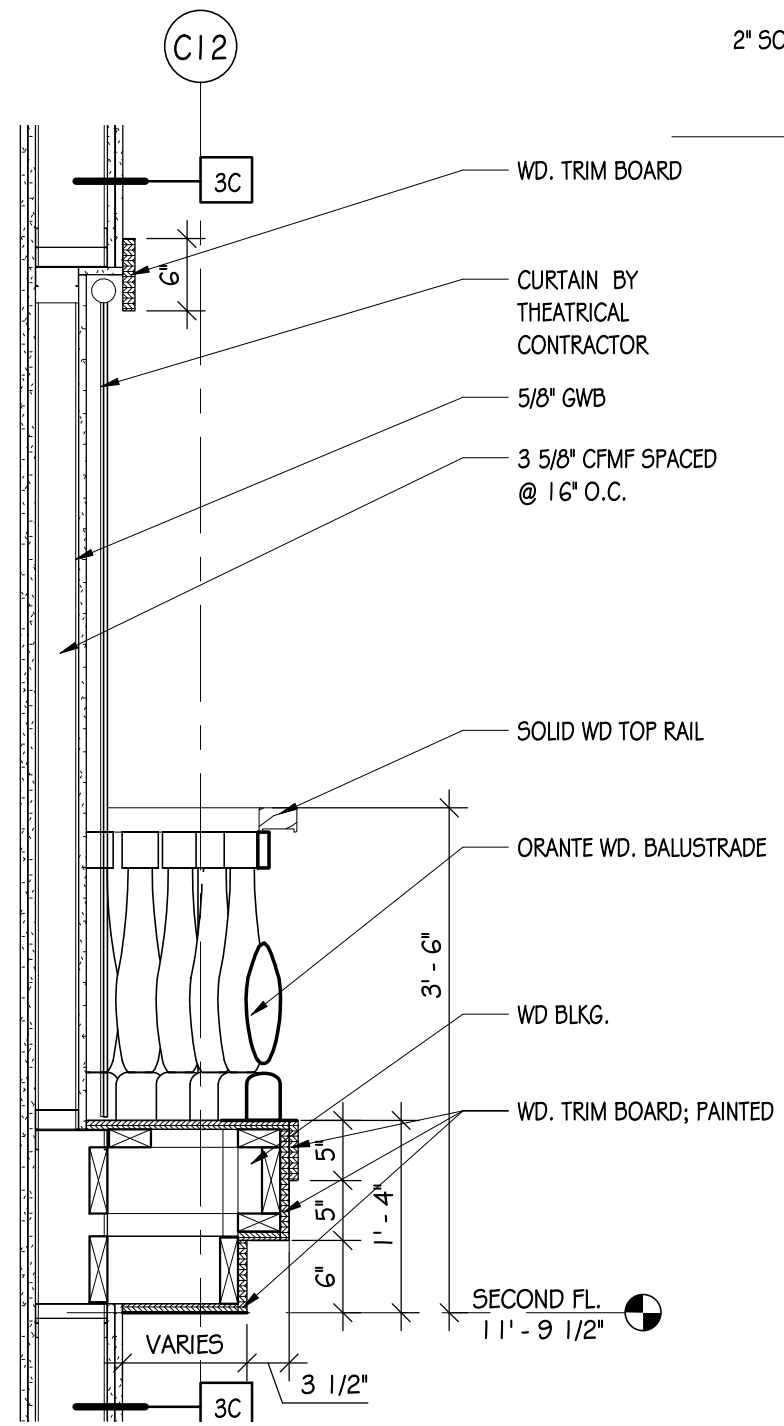
DRAWN BY: EES
 CHECKED BY: MS
 DATE: 06/14/18
 SCALE: As indicated
 REVISION:
 1. 7/3/18 ADDENDUM #4

Unauthorized Alteration Or Addition
 To Plans Bearing A Licensed
 Engineer's or Architects Seal, Is A
 Violation Of Section 7209 Of The
 New York State Education Law.

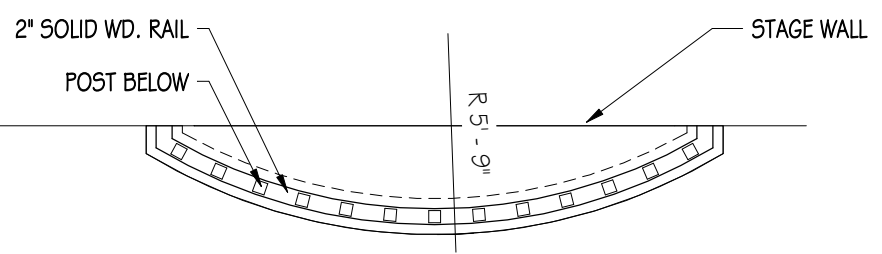
HUNT ENGINEERS | ARCHITECTS | SURVEYORS
 100 Hunt Center, Horseheads, New York 14845 P: 607-358-1000 F: 607-358-1800
 Offices: Rochester | Horseheads | Tonawanda

FAUX PERFORMANCE BALCONY
NEWFIELD CENTRAL SCHOOL DISTRICT
CAPITAL PROJECT PHASE III ADDS. & ALTS.
 247 MAIN STREET, NEWFIELD, NY 14867

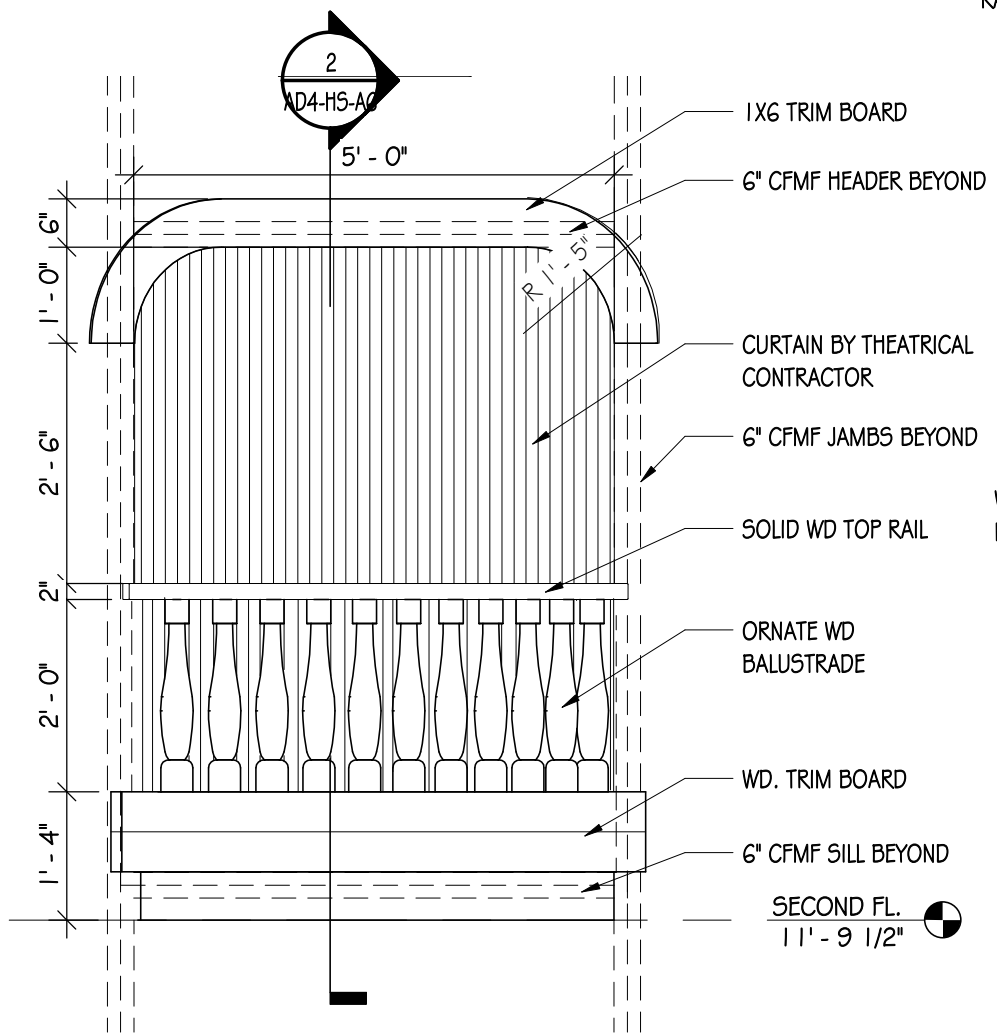
AD4-HS-A6
 PROJECT NO: 2712.008



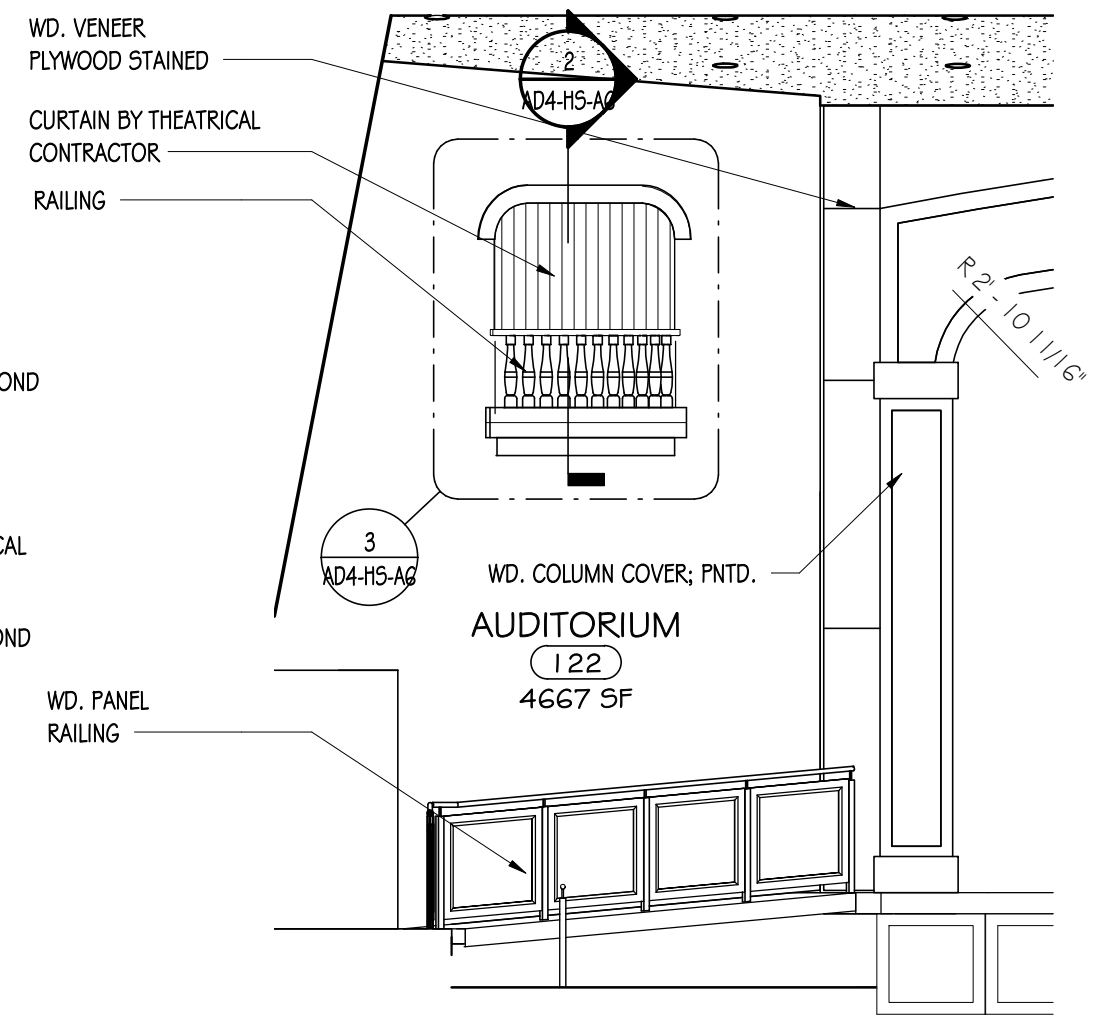
2 FAUX PERFORMANCE BALCONY - A
 3/4" = 1'-0"



4 BALCONY PLAN
 1/2" = 1'-0"



3 FAUX PERFORMANCE BALCONY
 1/2" = 1'-0"



1 PARTIAL AUDITORIUM 122 B
 3/16" = 1'-0"

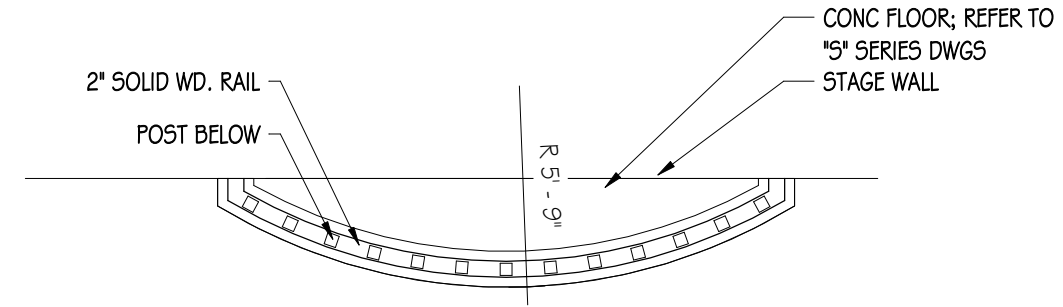
DRAWN BY: EES
 CHECKED BY: MS
 DATE: 06/14/18
 SCALE: As indicated
 REVISION:
 1. 7/3/18 ADDENDUM #4

Unauthorized Alteration Or Addition
 To Plans Bearing A Licensed
 Engineer's or Architects Seal, Is A
 Violation Of Section 7209 Of The
 New York State Education Law.

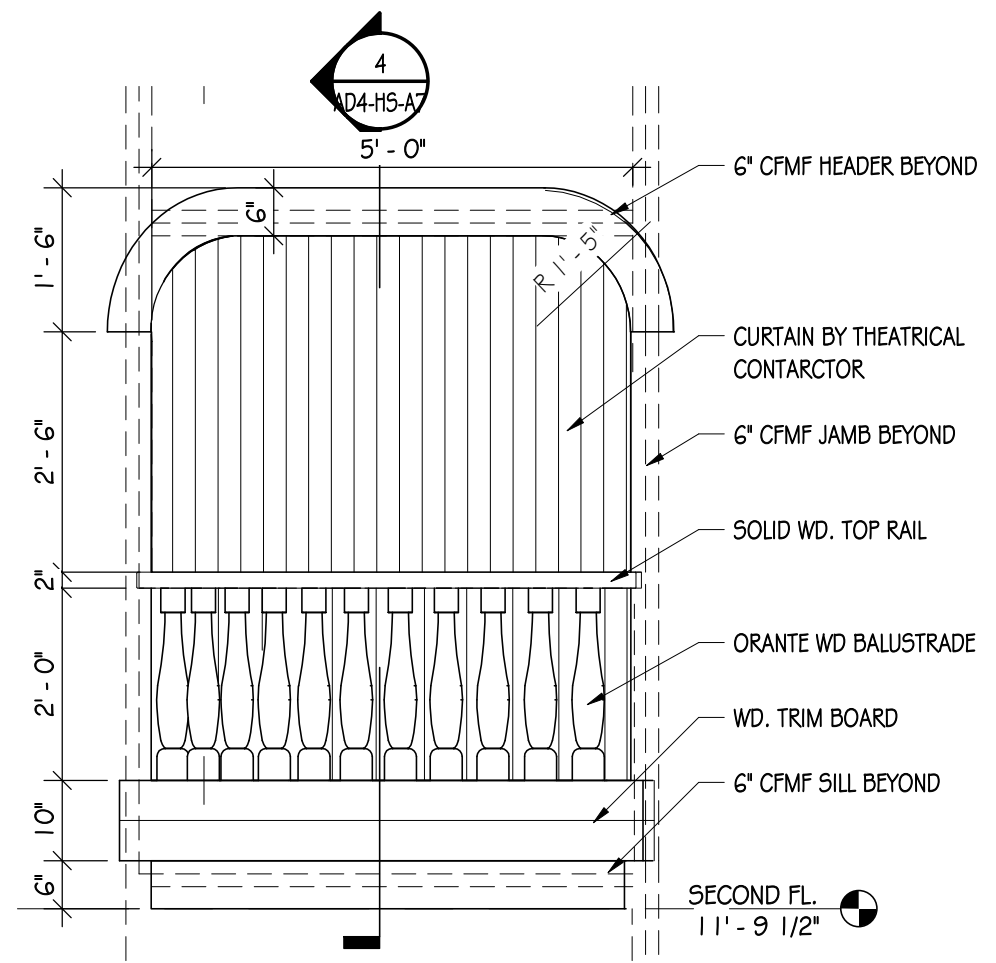
HUNT ENGINEERS | ARCHITECTS | SURVEYORS
 100 Hunt Center, Horseheads, New York 14845 P: 607-358-1000 F: 607-358-1800
 Offices: Rochester | Horseheads | Tonawanda

PERFORMANCE BALCONY
NEWFIELD CENTRAL SCHOOL DISTRICT
CAPITAL PROJECT PHASE III ADDS. & ALTS.
 247 MAIN STREET, NEWFIELD, NY 14867

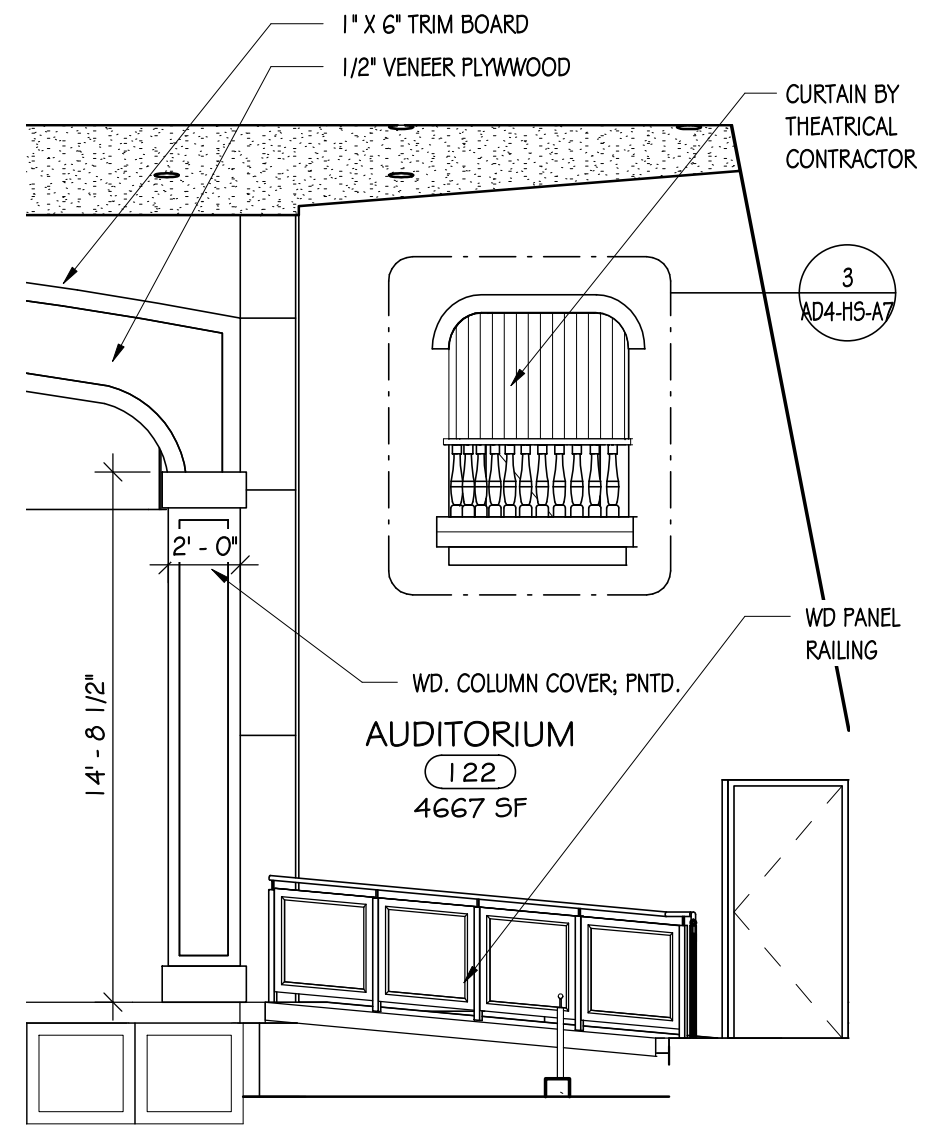
AD4-HS-A7
 PROJECT NO: 2712.008



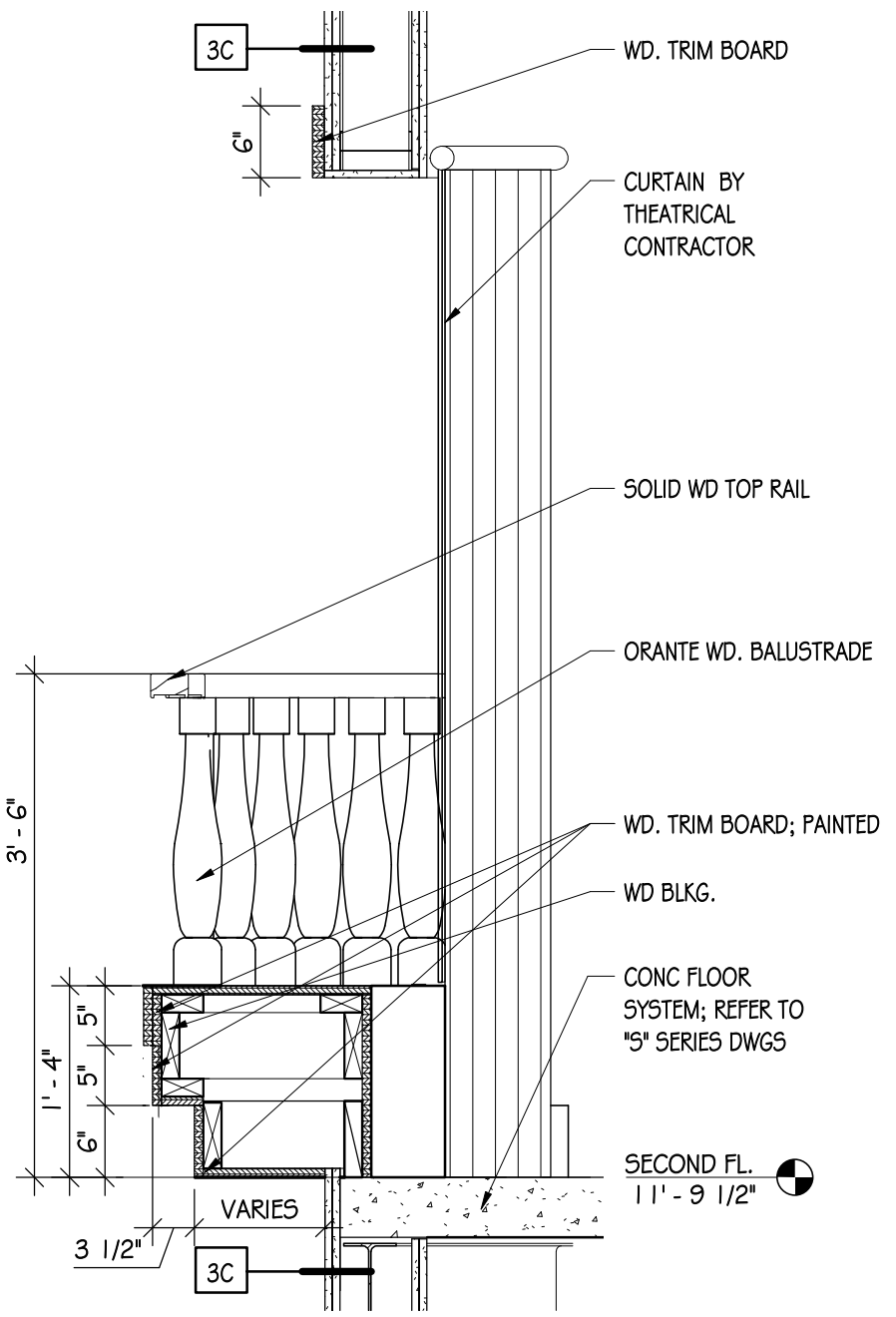
2 BALCONY PLAN - A
 1/2" = 1'-0"



3 PERFORMANCE BALCONY
 1/2" = 1'-0"



1 AUDITORIUM 122 B PARTIAL
 3/16" = 1'-0"



4 PERFORMANCE BALCONY SECTION
 3/4" = 1'-0"

DRAWN BY:	EES
CHECKED BY:	M5
DATE:	06/14/18
SCALE:	As indicated
REVISION:	
1.	7/3/18 ADDENDUM #4

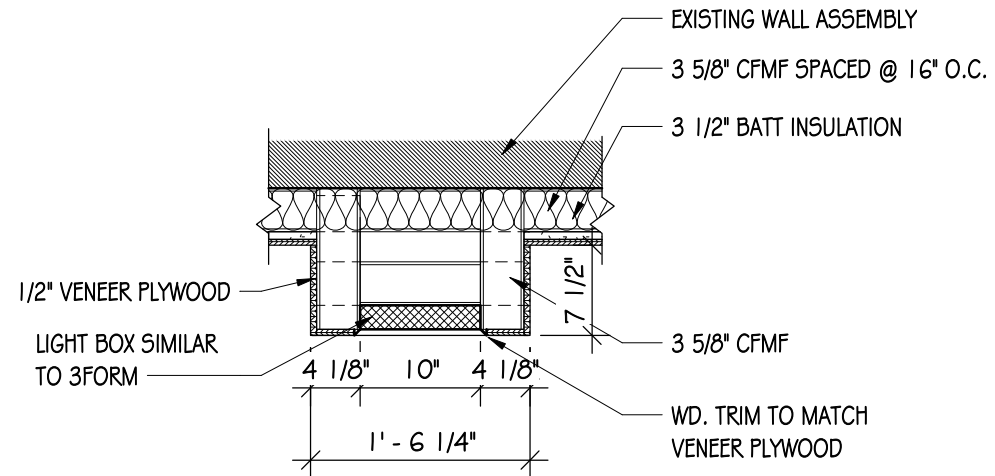
Copyright: 2018

Unauthorized Alteration Or Addition To Plans Bearing A Licensed Engineer's or Architects Seal, Is A Violation Of Section 7209 Of The New York State Education Law.

HUNT ENGINEERS | ARCHITECTS | SURVEYORS
 100 Hunt Center, Horseheads, New York 14845 P: 607-358-1000 F: 607-358-1800
 Offices: Rochester | Horseheads | Towanda

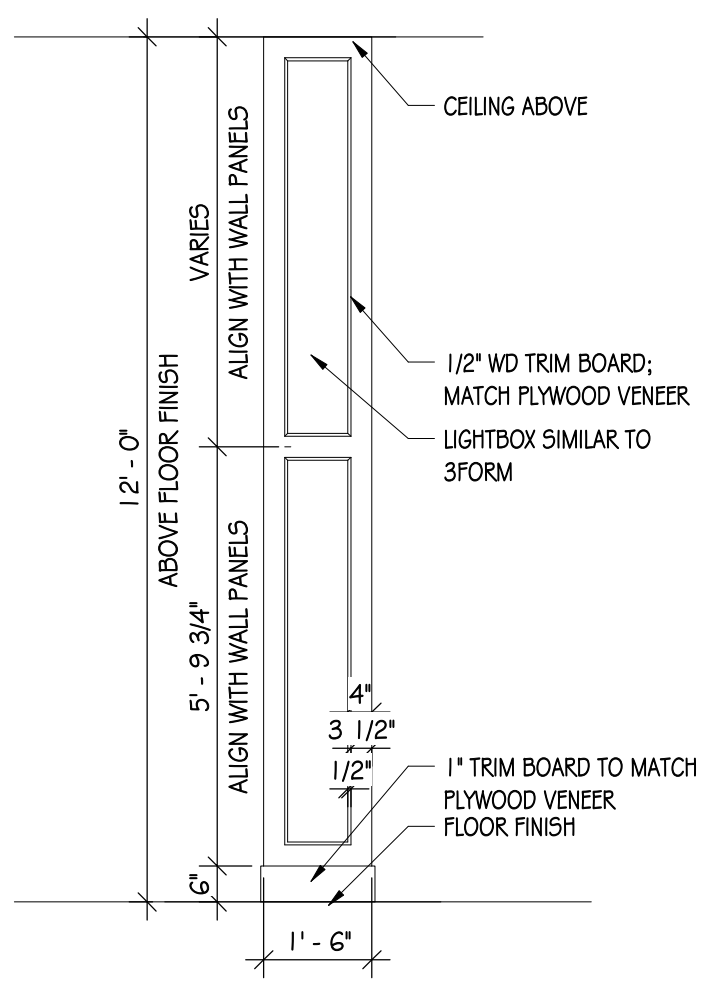
LIGHT BOX COLUMNS
NEWFIELD CENTRAL SCHOOL DISTRICT
CAPITAL PROJECT PHASE III ADDS. & ALTS.
 247 MAIN STREET, NEWFIELD, NY 14867

AD4-HS-A8
 PROJECT NO: 2712.008

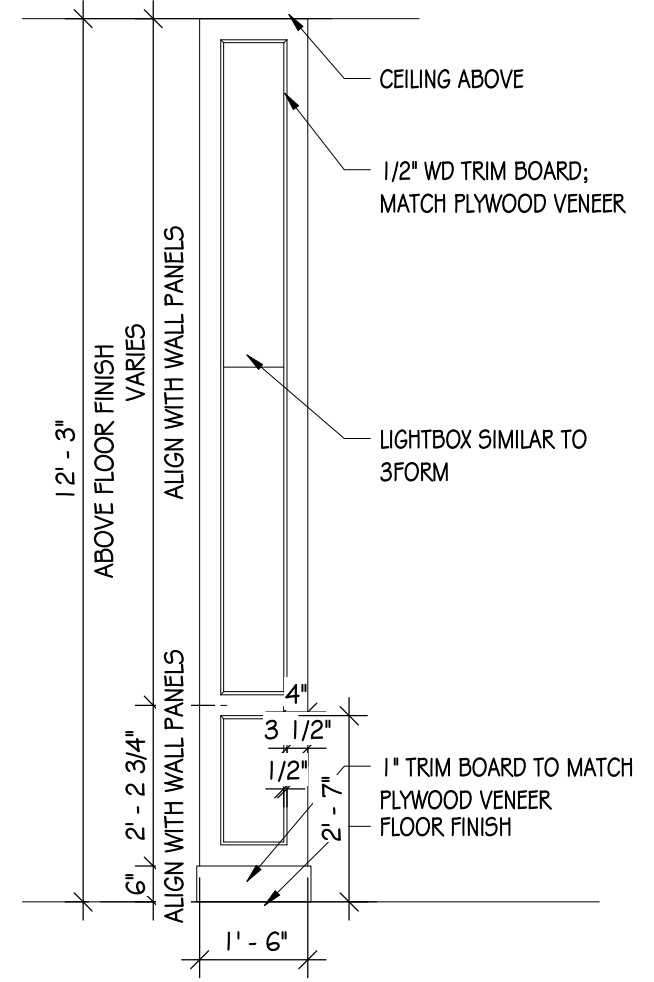


REFER TO ELEVATIONS FOR HEIGHTS

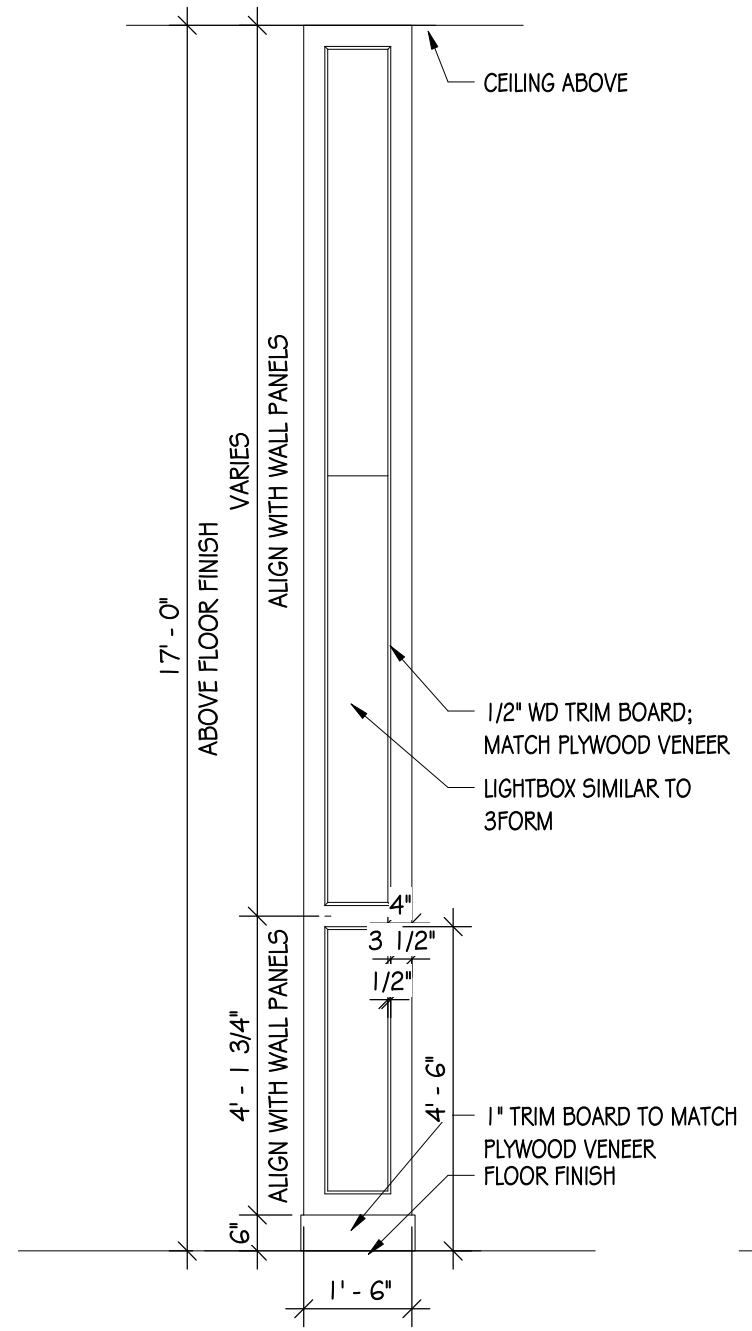
2 LIGHTBOX COLUMN
 3/4" = 1'-0"



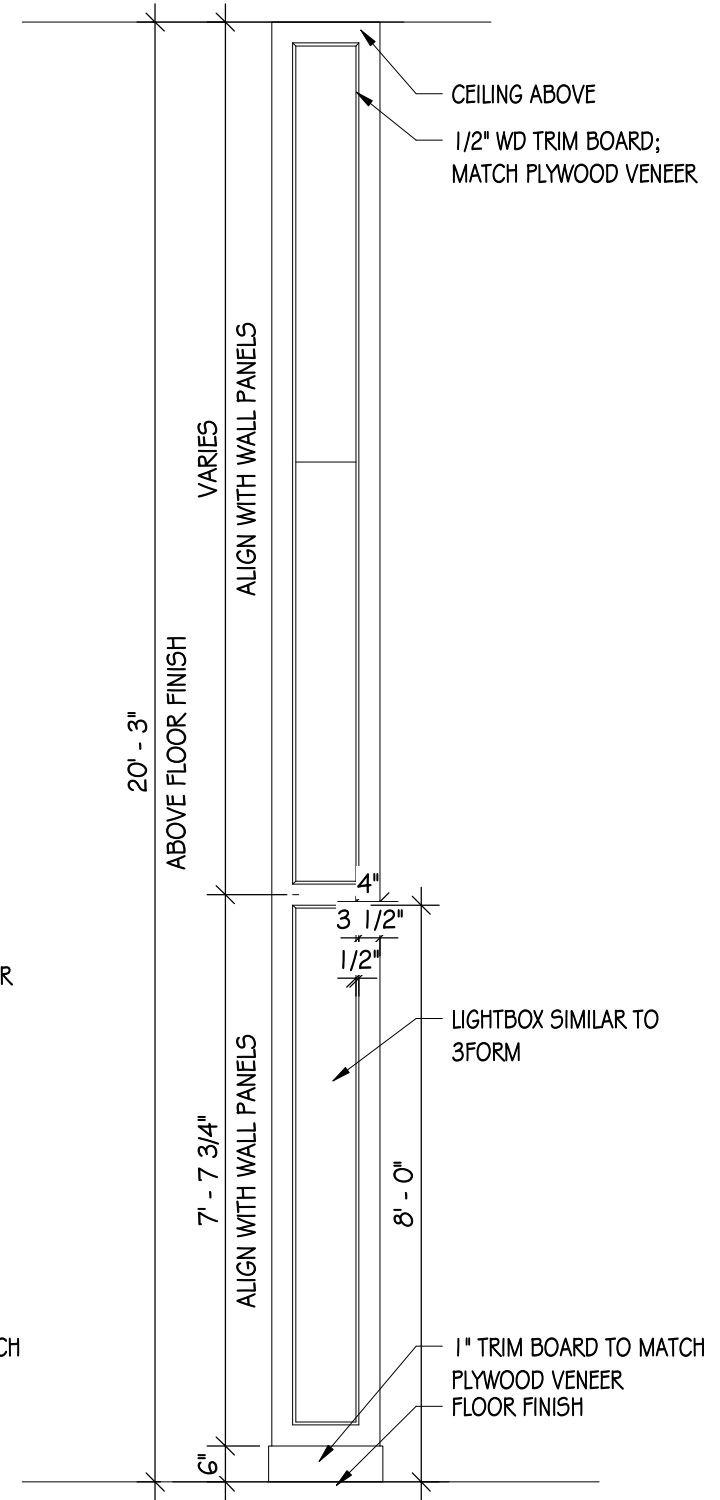
NOTE: (2) LOCATIONS



NOTE: (2) LOCATIONS



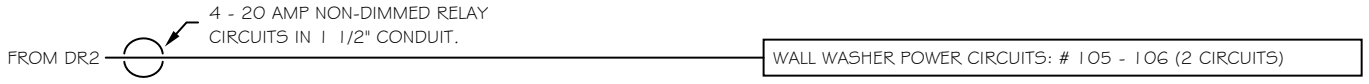
NOTE: (2) LOCATIONS



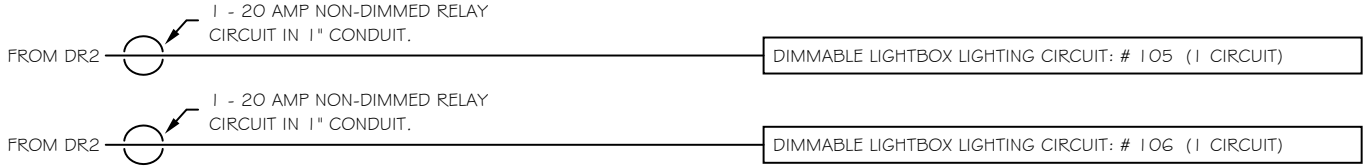
NOTE: (2) LOCATIONS

1 LIGHTBOX COLUMN ELEVATIONS
 3/8" = 1'-0"

DELETE FROM THE FLOW DIAGRAM ON HS-TL2. 1:



ADD TO THE FLOW DIAGRAM ON HS-TL2. 1:



1 SINGLE LINE FLOW DIAGRAM
SCALE: NONE

ONE LINE FLOW DIAGRAM

CAPITAL PROJECT - PHASE III ADDS. & ALTS.
NEWFIELD CENTRAL SCHOOL DISTRICT
247 MAIN STREET NEWFIELD, NY, 14867

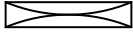
Copyright: 2018

HUNT ENGINEERS | ARCHITECTS | SURVEYORS
100 Hunt Center, Horseheads, New York 14845
P: 607-358-1000 F: 607-358-1800
Offices: Rochester | Horseheads | Towanda

AD4-HS-TL7

DATE:
7/03/2018
PROJECT NO:
2712.008

ADD TO THE SYMBOLS KEY ON HS-TL4.2:



LED Accent Light Boxes (Along Sidewalls): 3-Form Backlighting LightBox With All Required Mounting Hardware. Provide With Nebulous N47 Finish, With Diffusion Vapor W05 Layer. These Fixtures Shall Be Dimmable Via 0-10V Control. Provide With All Required Dimmable Power Supplies, Safety Cabling, Mounting Hardware, Etc. As Required. Provide Custom Sizes As Shown On AD4-HS-A8.

Mounted In Columns As Indicated. Provide Any Additional Hardware, Etc. As Needed In Order To Attach Properly. Provide An Additional (1) Fixture Of Each Size, Fully Burned In, Re-Boxed & Stored For Future Use As Replacements.

ACCENT LIGHTING SYMBOLS KEY

CAPITAL PROJECT - PHASE III ADDS. & ALTS.

NEWFIELD CENTRAL SCHOOL DISTRICT

247 MAIN STREET NEWFIELD, NY, 14867

Copyright: 2018

HUNT ENGINEERS | ARCHITECTS | SURVEYORS

100 Hunt Center, Horseheads, New York 14845
P: 607-358-1000 F: 607-358-1800

Offices: Rochester | Horseheads | Towanda

AD4-HS-TL6

DATE:
7/03/2018

PROJECT NO:
2712.008

