



**IBI GROUP**  
3rd Floor, 59-61 Court Street  
Binghamton NY 13901 USA  
tel 607 772 0007 fax 607 723 4121  
[ibigroup.com](http://ibigroup.com)

DATE: February 7, 2020  
TO: All Planholders  
SUBJECT: **ADDENDUM NO. 2**  
PROJECT: Maine Endwell Central School District  
2019 Capital Improvements – Phase 1  
IBI Reference No. 121341

**SED REVIEW NOS. 19-0750, 19-0751, 19-0752, 19-0753, and 19-0754**

**SED PROJECT NOS.**

**03-11-01-06-0-001-018 – Homer Brink Elementary**  
**03-11-01-06-0-008-017 – Maine Memorial Elementary**  
**03-11-01-06-0-010-025 – Senior High School**  
**03-11-01-06-0-015-017 – Middle School**  
**03-11-01-06-5-003-009 – Bus Garage**

All contractors submitting proposals for the above project shall take note of the following changes, additions, interpretations, clarifications, etc., in connection with the bidding documents.

This Addendum forms a part of the Contract Documents and modifies the original Bidding Documents dated October 15, 2019, and any previously issued addenda, as noted below.

**Previous Issued Addenda**

Addendum No. 1 – February 3, 2020

**Index to Addendum**

IBI Group

**Pages**

AD2-1 - 2

**Attachments**

Drawing AD2-HB-E212 – Chilled Beam Control Power Plan

**I. SPECIFICATIONS**

- A. Document 00 11 13 – Invitation to Bid:
1. Paragraph A, Item3, delete the words “February 12, 2020” in their entirety and insert the words “February 18, 2020” in lieu thereof.
- B. Section 01 50 23 – Uniform Safety Standards for School Construction:
1. Question: Will there be any noise restraints for second shift? Masonry activities tend to be very loud, saws, back up beepers, hammers. With this school being in a neighborhood it seems this could pose an issue.
    - a. **Clarification:** Noise levels shall be as noted in Specification Section 01 50 23.

## II. DRAWINGS

### A. Drawing HB-E201 – Lower Level Renovation Plans:

1. Note R106, insert the following in its entirety: “Provide RIB relay between EF and controller for power and to activate the fan. Refer to detail 7 on HB-M402 for additional wiring information. Provide additional 120V CKT from panel boiler Room A, spare 20A/1P breaker, #13, using (2) #12, #12G, in ¾” CDT. Provide 120/24V transformer to power the refrigeration leak detection system.”

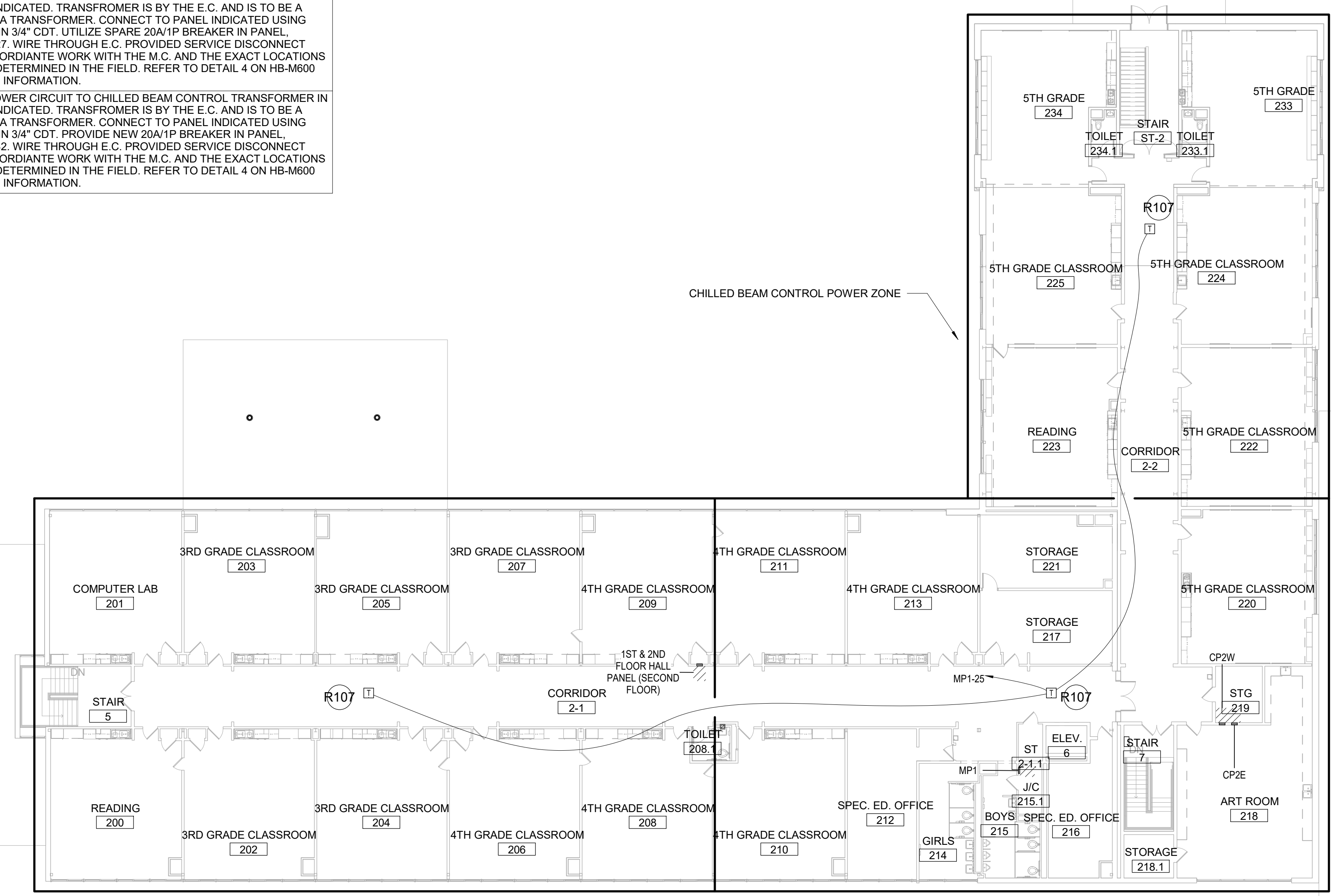
### B. Drawing AD2-HB-E212 – Chilled Beam Control Power Plan:

1. Insert attached AD2-HB-E212 – Chilled Beam Control Power Plan in its entirety.

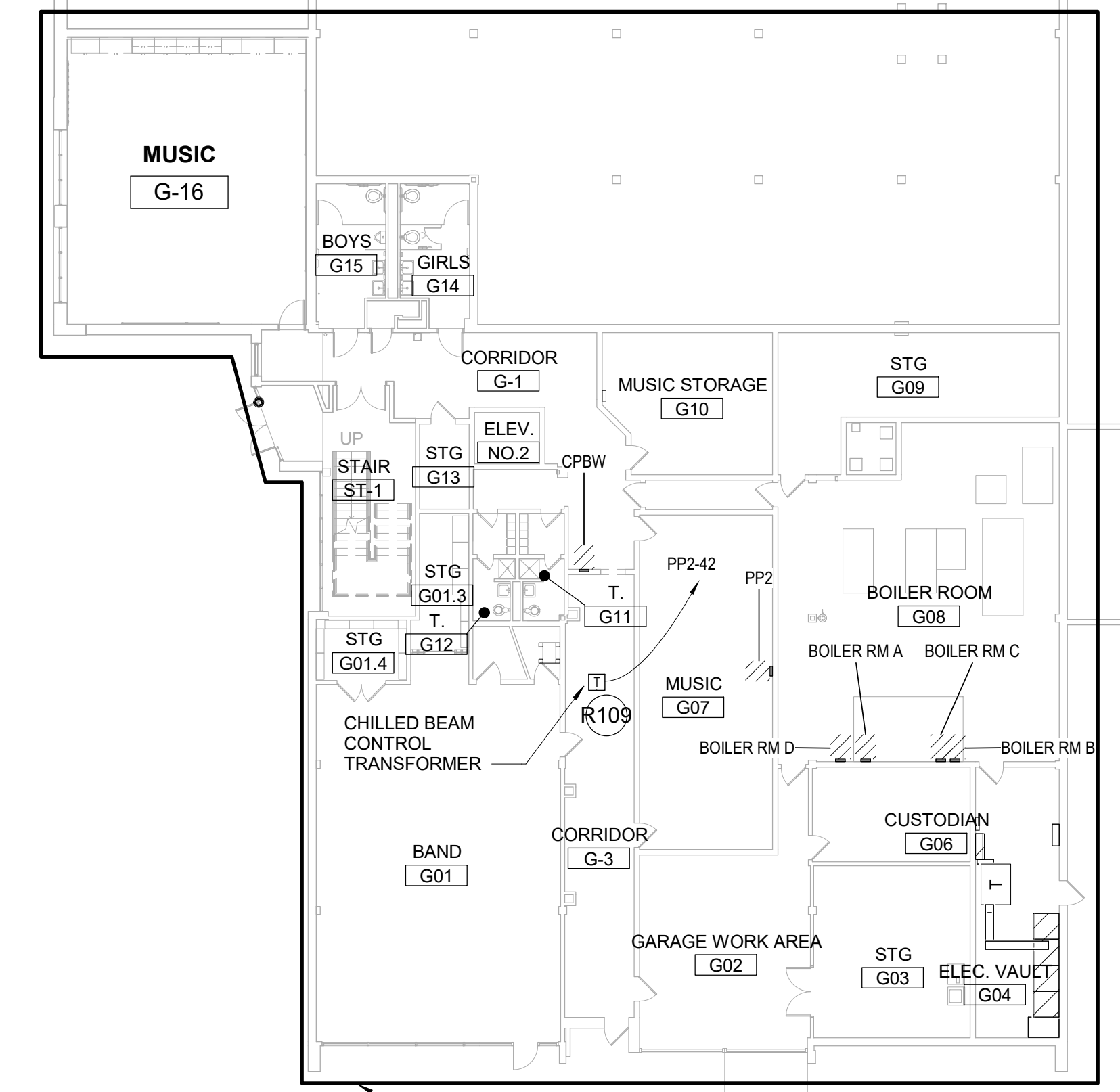
**END OF ADDENDUM**

RENOVATION KEY NOTES

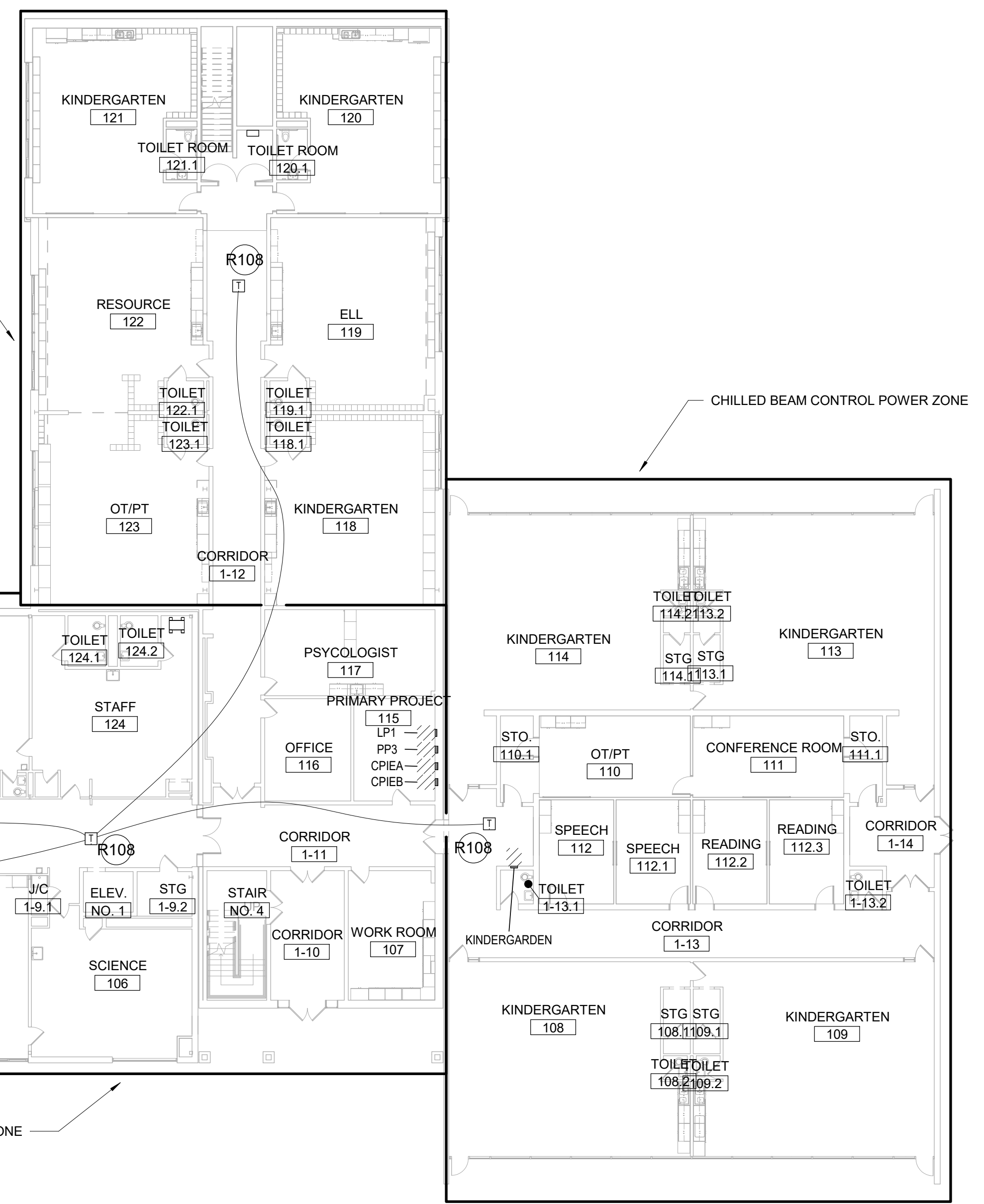
KEYNOTE	KEYNOTE TEXT
R107	PROVIDE POWER CIRCUIT TO CHILLED BEAM CONTROL TRANSFORMER IN LOCATION INDICATED. TRANSFORMER IS BY THE E.C. AND IS TO BE A 120/24V, 96VA TRANSFORMER. CONNECT TO PANEL INDICATED USING (2)#10,#10G IN 3/4" CDT. UTILIZE SPARE 20A/1P BREAKER IN PANEL. POSITION #25. WIRE THROUGH E.C. PROVIDED SERVICE DISCONNECT SWITCH. COORDINATE WORK WITH THE M.C. AND THE EXACT LOCATIONS ARE TO BE DETERMINED IN THE FIELD. REFER TO DETAIL 4 ON HB-M600 FOR WIRING INFORMATION.
R108	PROVIDE POWER CIRCUIT TO CHILLED BEAM CONTROL TRANSFORMER IN LOCATION INDICATED. TRANSFORMER IS BY THE E.C. AND IS TO BE A 120/24V, 96VA TRANSFORMER. CONNECT TO PANEL INDICATED USING (2)#10,#10G IN 3/4" CDT. UTILIZE SPARE 20A/1P BREAKER IN PANEL. POSITION #27. WIRE THROUGH E.C. PROVIDED SERVICE DISCONNECT SWITCH. COORDINATE WORK WITH THE M.C. AND THE EXACT LOCATIONS ARE TO BE DETERMINED IN THE FIELD. REFER TO DETAIL 4 ON HB-M600 FOR WIRING INFORMATION.
R109	PROVIDE POWER CIRCUIT TO CHILLED BEAM CONTROL TRANSFORMER IN LOCATION INDICATED. TRANSFORMER IS BY THE E.C. AND IS TO BE A 120/24V, 96VA TRANSFORMER. CONNECT TO PANEL INDICATED USING (2)#12,#12G IN 3/4" CDT. UTILIZE SPARE 20A/1P BREAKER IN PANEL. POSITION #42. WIRE THROUGH E.C. PROVIDED SERVICE DISCONNECT SWITCH. COORDINATE WORK WITH THE M.C. AND THE EXACT LOCATIONS ARE TO BE DETERMINED IN THE FIELD. REFER TO DETAIL 4 ON HB-M600 FOR WIRING INFORMATION.



3 SECOND FLOOR CHILLED BEAM CONTROL POWER PLAN  
Scale: 1/16" = 1'-0"



1 LOWER LEVEL CHILLED BEAM CONTROL POWER PLAN  
Scale: 1/16" = 1'-0"



2 FIRST FLOOR CHILLED BEAM CONTROL POWER PLAN  
Scale: 1/16" = 1'-0"

CLIENT  
**MAINE ENDWELL CENTRAL SCHOOL DISTRICT**  
712 FARM TO MARKET RD., ENDWELL, NY 13760

COPYRIGHT  
This drawing has been prepared solely for the intended use, and any reproduction or distribution for any purpose other than authorized by IBI Group is forbidden. Within dimensions and limits, IBI Group shall be responsible for all dimensions and conditions on the job, and IBI Group shall be responsible for any variations from the dimensions and conditions shown on the drawing. Shop drawings shall be submitted to IBI Group for general review and approval, but shall not be a part of this contract.

IBI GROUP ARCHITECTS, ENGINEERS, & LANDSCAPE ARCHITECTS  
is a member of the IBI Group of companies

ISSUES

ISSUE	ISSUANCE	DATE

KEYPLAN

CONSULTANTS

SEAL

PRIME CONSULTANT

**IBI GROUP**  
58-61 Court Street, Suite 300  
Binghamton, NY 13901-1956, USA  
Tel: 607.732.0007 fax: 607.723.4121  
ibigroup.com

PROJECT  
**2019 CAPITAL IMPROVEMENTS - PHASE 1**  
HOMER BRINK ELEMENTARY SCHOOL  
3618 BRIAR LANE, ENDWELL, NEW YORK 13760

IBI PROJECT NO: 121341	CLIENT PROJECT NO: 03-11-01-06-0-001-018
DRAWN BY: RMC	CHECKED BY: WTM
PROJECT MGR: SMT	APPROVED BY: WTM
SCALE: 1/16" = 1'-0"	DATE: 2019-10-16

SHEET TITLE  
**CHILLED BEAM CONTROL POWER PLAN**

SHEET NUMBER <b>AD2-HB-E212</b>	ISSUE
------------------------------------	-------

2020-02-07 11:28 PM

IBI 3007/121341 - 2019 Capital Improvements, 03/11/21 1341-HECSD-2019 Cap Imp-HB-E212