

BID ADDENDUM NO. 2

January 29, 2025
Horseheads Central School District
Ridge Road Elementary School
HUNT #: 1923-060

SED #07-09-01-06-0-008-019

The following Addendum items shall be considered as part of the contract documents prepared by HUNT ENGINEERS, ARCHITECTS, LAND SURVEYORS & LANDSCAPE ARCHITECT, DPC.
Bid Document date of January 13, 2025

Specifications issued by this Addendum:

None

Drawings issued by this Addendum:

E3.4 – ONE-LINE DIAGRAM – NEW WORK

Revisions to Project Manual issued by this Addendum:

ITEM AD2-1 Refer to Section 01 10 00 - Summary

ADD Paragraph 1.13.3.c to read as follows:

“c. 23 33 00 Air Duct Accessories

- 1) Exclude paragraph 2.10.A Flow meters from contract.”

ITEM AD2-2 Refer to Section 01 10 00 - Summary

ADD Paragraph 1.15.A.2.f.2 to read as follows:

- 2) Provide Air Flow Meters as detailed in paragraph 2.10.A and sub paragraphs.

Revisions to Drawings issued by this Addendum:

ITEM AD2-3 Refer to Drawing FP1.3 – FIRST FLOOR FIRE PROTECTION – AREA D

ADD Note to soffit on either side of folding partition located in room 200 to read as follows.

“Provide sprinklers and piping in bottom of soffit as required per NFPA 13.”

ITEM AD2-4 Refer to Drawing E3.2 – ONE-LINE - DEMOLITION

AMEND Note “D2” to read as follows

“ALL EXISTING POLES AND OVERHEAD CABLES THROUGHOUT THE PARKING LOT ARE TO BE DEMOLISHED BY NYSEG. CONTRACTOR TO CARRY COST OF REMOVAL OF ONE UTILITY POLE AND ASSOCIATED OVERHEAD CABLES AT THE END OF THE RUN. THIS FINAL POLE IS POTENTIALLY CUSTOMER OWNED, AND NYSEG COULD NOT CONFIRM/DEBY THIS AT THE TIME OF COORDINATION. CONTRACTOR IS NOT TO REUSE EXISTING UNDERGROUND CONDUITS FROM FINAL UTILITY POLE TO BUILDING. DEMILISH SAID CONDUITS IN THE PROCESS OF LAYING NEW CONDUIT IN TRENCHES WHEREVER POSSIBLE. CONTRACTOR TO COORDINATE EXTENTS OF NYSEG DEMOLITION SCOPE PRIOR TO STARTING WORK.”

ITEM AD2-5 Refer to Drawing E3.4 - ONE-LINE DIAGRAM - NEW WORK

DELETE SHEET "E3.4 - ONE-LINE DIAGRAM - NEW WORK" AS ORIGINALLY ISSUED

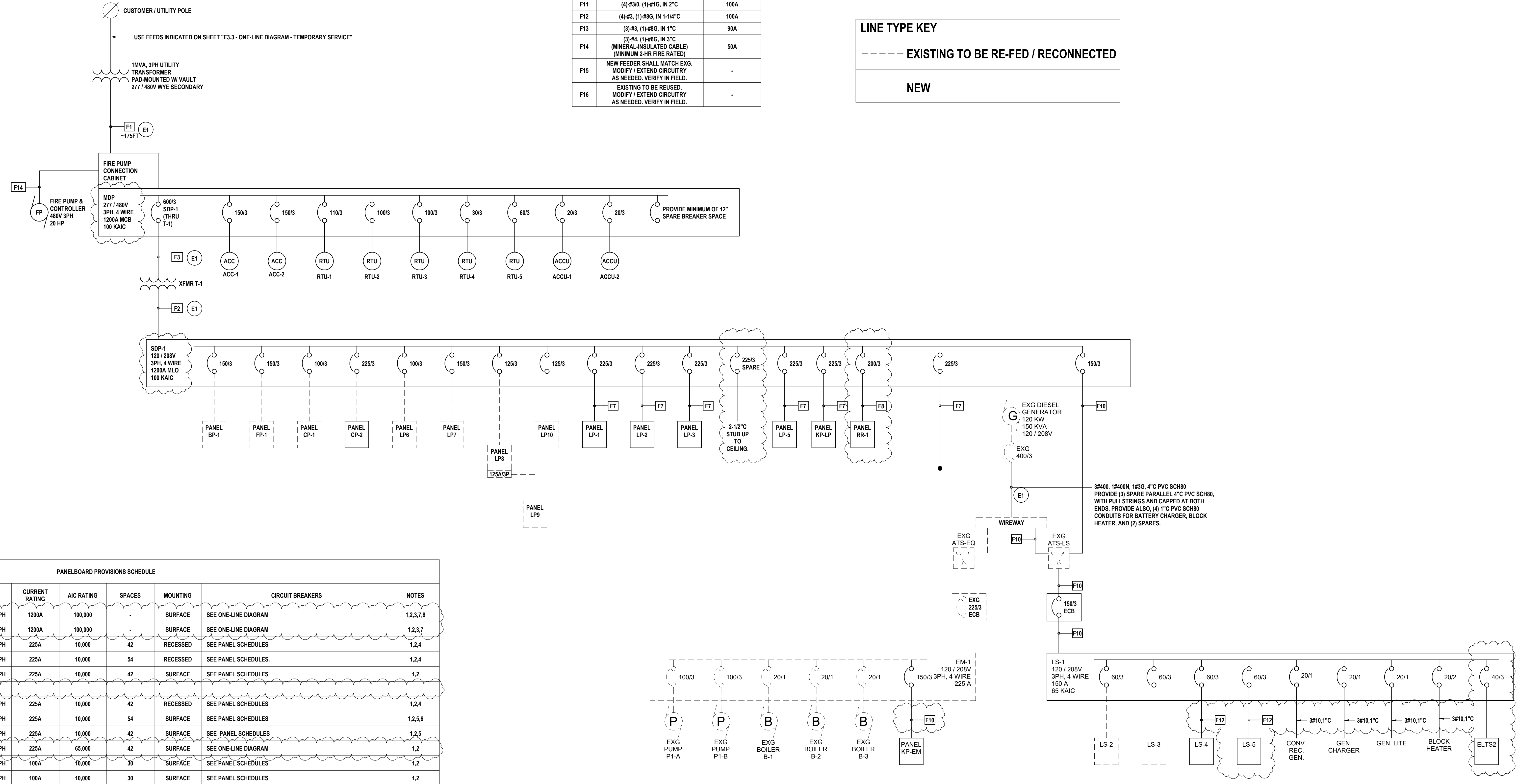
ADD SHEET "E3.4 - ONE-LINE DIAGRAM - NEW WORK" BY THIS ADDENDUM

End of Addendum 2

ONE-LINE DIAGRAM NOTES - NEW WORK
 E1 PROVIDE CIRCUITRY AS NOTED AND UNDERGROUND FROM EQUIPMENT PAD LOCATION TO ITS SOURCE INDICATED. REFER TO "L" DRAWINGS FOR CONDUIT PATH LOCATION AND COORDINATE WITH ALL TRADES AS NEEDED TO AVOID CONFLICT WHERE AT ALL POSSIBLE.

FEEDER SCHEDULE		
NAME	DESCRIPTION	MAX. AMPERAGE ASSUMES VOLTAGE DROP
F1	(4-SETS OF ALUMINUM) (4)-#50, (1)-#250G, IN 4" C PROVIDE (2) SPARE 4" C	1200A
F2	(3 SETS) (4)-#600, (1)-#300G, IN 3-1/2" C	1200A
F3	(2 SETS) (3)-#350, (1)-#1G, IN 2-1/2" C	600A
F4	(2 SETS) (4)-#350, (1)-#1G, IN 2-1/2" C	600A
F5	(4)-#350, (1)-#4G, IN 2-1/2" C	300A
F6	(4)-#250, (1)-#4G, IN 2-1/2" C	250A
F7	(4)-#40, (1)-#4G, IN 2-1/2" C	225A
F8	(4)-#30, (1)-#6G, IN 2" C	200A
F9	(3)-#20, (1)-#6G, IN 2" C	175A
F10	(3)-#10, (1)-#6G, IN 1-1/2" C	150A
F11	(4)-#30, (1)-#1G, IN 2" C	100A
F12	(4)-#3, (1)-#6G, IN 1-1/4" C	100A
F13	(3)-#3, (1)-#6G, IN 1" C	90A
F14	(3)-#4, (1)-#6G, IN 3" C (MINERAL-INSULATED CABLE) (MINIMUM 2-HR FIRE RATED)	50A
F15	NEW FEEDER SHALL MATCH EXG. MODIFY / EXTEND CIRCUITRY AS NEEDED. VERIFY IN FIELD.	-
F16	EXISTING TO BE REUSED. MODIFY / EXTEND CIRCUITRY AS NEEDED. VERIFY IN FIELD.	-

LINE TYPE KEY	
---	EXISTING TO BE RE-FED / RECONNECTED
—	NEW



PANELBOARD PROVISIONS SCHEDULE									
PANEL NAME	LOCATION	MAINS TYPE	VOLTAGE	CURRENT RATING	AIC RATING	SPACES	MOUNTING	CIRCUIT BREAKERS	NOTES
MDP	-	1200A MCB	277 / 480V 3PH	1200A	100,000	-	SURFACE	SEE ONE-LINE DIAGRAM	1,2,3,7,8
SDP	-	1200A MLO	120 / 208V 3PH	1200A	100,000	-	SURFACE	SEE ONE-LINE DIAGRAM	1,2,3,7
LP-1	-	225A MCB	120 / 208V 3PH	225A	10,000	42	RECESSED	SEE PANEL SCHEDULES	1,2,4
LP-2	-	225A MCB	120 / 208V 3PH	225A	10,000	54	RECESSED	SEE PANEL SCHEDULES	1,2,4
LP-3	-	225A MCB	120 / 208V 3PH	225A	10,000	42	SURFACE	SEE PANEL SCHEDULES	1,2
LP-5	-	225A MCB	120 / 208V 3PH	225A	10,000	42	RECESSED	SEE PANEL SCHEDULES	1,2,4
KP-LP	-	225A MCB	120 / 208V 3PH	225A	10,000	54	SURFACE	SEE PANEL SCHEDULES	1,2,5,6
KP-EM	-	150A MCB	120 / 208V 3PH	225A	10,000	42	SURFACE	SEE PANEL SCHEDULES	1,2,5
LS-1	-	150A MLO	120 / 208V 3PH	225A	65,000	42	SURFACE	SEE ONE-LINE DIAGRAM	1,2
LS-4	-	60A MCB	120 / 208V 3PH	100A	10,000	30	SURFACE	SEE PANEL SCHEDULES	1,2
LS-5	-	60A MCB	120 / 208V 3PH	100A	10,000	30	SURFACE	SEE PANEL SCHEDULES	1,2

TRANSFORMER PROVISIONS SCHEDULE						
XFMR NAME	LOCATION	KVA RATING	PRIMARY VOLTAGE	SECONDARY VOLTAGE	MOUNTING	NOTES
T-1	BOILER ROOM (AREA C)	400 KVA	480V 3PH	120 / 208V 3PH	EXTERIOR PAD	1

TRANSFORMER PROVISIONS SCHEDULE NOTES:
 1. COORDINATE FINAL SIZE OF EXTERIOR PAD WITH OTHERS. PROPOSE MINIMUM OF 4" LARGER THAN OVERALL TRANSFORMER DIMENSIONS, FLUSH WITH ANY ADJACENT WALLS.

- PANELBOARD PROVISIONS SCHEDULE NOTES:
- CIRCUIT BREAKERS SECTION IS ONLY MEANT AS A BASELINE REFERENCE. VERIFY ALL REQUIRED CIRCUIT BREAKERS TO BE INSTALLED IN THIS ELECTRICAL PANELBOARD PRIOR TO ORDERING.
 - TRACE & IDENTIFY ALL NEW BRANCH CIRCUITS USING APPROPRIATE LABELING. ANY UNUSED CIRCUIT BREAKERS SHALL BE INSTALLED IN THE 'OFF' POSITION AND LABELED AS 'SPARE'. ARRANGE / BALANCE PANELBOARD CIRCUITS & LOADS NEATLY AND APPROPRIATELY. PROVIDE TYPED AS-BUILT PANEL SCHEDULE UPON COMPLETION OF WORK.
 - SIEMENS P5 PANELBOARD.
 - RECESSED ELECTRICAL PANELBOARD. COORDINATE FIRE RATINGS AND INSTALLATION WITH A-SERIES CONTRACTOR.
 - PROVIDE ELECTRICAL PANELBOARD WITH SHUNT-TRIP MAIN CIRCUIT BREAKER CONNECTED TO AUXILIARY CONTACTS OF EMERGENCY STOPS ASSOCIATED WITH THE KITCHEN EQUIPMENT SERVED BY THIS PANELBOARD. THIS PANELBOARD SHALL ONLY SERVE KITCHEN EQUIPMENT THAT IS REQUIRED TO BE SHUT-OFF UPON THE ACTIVATION OF A LOCAL EMERGENCY STOP BUTTON; OTHER TYPES OF CIRCUITS SHALL BE SERVED FROM A DIFFERENT SOURCE.
 - PROVIDE ELECTRICAL PANELBOARD WITH SUB-FEED LUGS.
 - BASIS OF DESIGN IS SIEMENS "INTEGRATED POWER SYSTEM" (IPS). ALL SUBSTITUTIONS WILL REQUIRE CONTRACTOR TO PROVIDE IN THE SUBMITTAL. DIMENSIONED LAYOUTS OF THE SPACE ENSURING THE PROPOSED EQUIPMENT WILL FIT AS DESIGNED.
 - PROVIDE INDICATED EQUIPMENT WITH FACTORY INSTALLED, INTERNALLY MOUNTED SURGE PROTECTIVE DEVICE. IF SPACE DOES NOT ALLOW, PLEASE PROVIDE SUBMITTAL FOR EXTERNALLY MOUNTED FIELD INSTALLED DEVICE WITHIN THE SPACE WHERE POSSIBLE AND INCLUDE THIS IN THE DIMENSIONED LAYOUTS INDICATED IN NOTE #7.

DRAWN BY: SPB
 CHECKED BY: KMH
 DATE: 01/22/2025
 PHASE: CD
 # DATE: 1 01/22/2025
 DESCRIPTION OF REVISION:
 ISSUED FOR BID
 IT IS A VIOLATION OF THE LAW FOR ANY PERSON TO MAKE UNAUTHORIZED ALTERATIONS OR ADDITIONS TO PLANS DRAWING, CALCULATIONS, SPECIFICATIONS, CONTRACTS OR INSTRUMENTS OF SERVICE.

HUNT ENGINEERS ARCHITECTS | SURVEYORS
 HORSEHEADS, NY 607-263-1000
 ROCHESTER, NY 585-337-7500
 BINGHAMTON, NY 607-798-8881
 ALBANY, NY 607-798-8881
 WWW.HUNTEAS.COM
 NY CERTIFICATE NO. 0016250 PA CERTIFICATE NO. TSC2202031464-1

ONE-LINE DIAGRAM - NEW WORK
RIDGE ROAD ELEMENTARY ADDITION & ALTS
HORSEHEADS CENTRAL SCHOOL DISTRICT
 112 RIDGE RD, HORSEHEADS, NY 14845
E3.4
 PROJECT NO: 1923-060