



PROJECT SITE LOCATION:
534 LIDY RD
DUPONT, PA 18641
41.332° N, 75.742° W

AVP / ATCT - WILKES-BARRE, PENNSYLVANIA TOWER SIMULATION SYSTEM (TSS)



DRAWING LIST

DRAWING NO.	REV.	DATE	DESCRIPTION
AVP-25014162-G001		05/08/2026	ATCT TOWER SIMULATION SYSTEM COVER SHEET, INDEX, AND VICINITY MAP
AVP-25014162-D001		05/08/2026	ATCT TOWER SIMULATION SYSTEM DEMOLITION GROUND LEVEL LIGHTING PLAN
AVP-25014162-D002		05/08/2026	ATCT TOWER SIMULATION SYSTEM DEMOLITION GROUND LEVEL POWER PLAN
AVP-25014162-D003		05/08/2026	ATCT TOWER SIMULATION SYSTEM DEMOLITION CONFERENCE ROOM FLOOR AND CEILING PLAN
AVP-25014162-D004		05/08/2026	ATCT TOWER SIMULATION SYSTEM DEMOLITION BASE LEVEL HVAC PLAN
AVP-25014162-A001		05/08/2026	ATCT TOWER SIMULATION SYSTEM ARCHITECTURAL TRACON ENLARGED PARTIAL FLOOR PLANS
AVP-25014162-M001		05/08/2026	ATCT TOWER SIMULATION SYSTEM MECHANICAL TOWER AND TRACON BASE LEVEL HVAC PLAN
AVP-25014162-M002		05/08/2026	ATCT TOWER SIMULATION SYSTEM MECHANICAL TOWER AND TRACON LINK HVAC ROOF PLAN
AVP-25014162-E001		05/08/2026	ATCT TOWER SIMULATION SYSTEM ELECTRICAL BASE BUILDING GROUND LEVEL FLOOR PLAN
AVP-25014162-E002		05/08/2026	ATCT TOWER SIMULATION SYSTEM ELECTRICAL BASE BUILDING GROUND LEVEL LIGHTING PLAN
AVP-25014162-E003		05/08/2026	ATCT TOWER SIMULATION SYSTEM ELECTRICAL BASE BUILDING GROUND LEVEL POWER PLAN



PTSI Managed Services Inc.
100 Walnut Street
Pasadena, CA 91124
202-651-2500

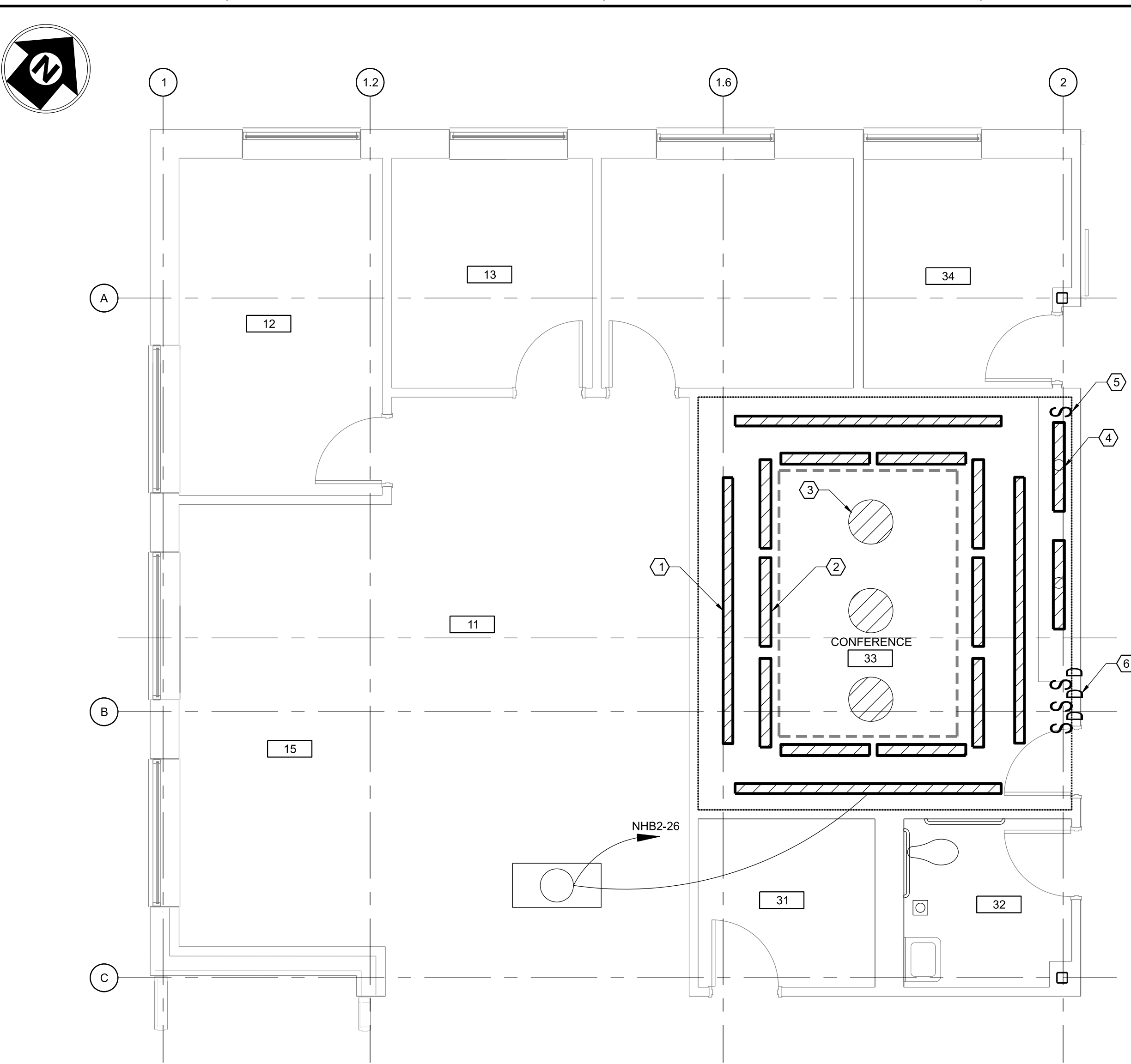


RELEASED FOR: WR 5-ANT-1008
ISSUED FOR CONSTRUCTION - 05/08/2026

REV	05/08/2026	CONSTRUCTION DT#SO23071	JCN	REDLINE DATE	APVD
DEPARTMENT OF TRANSPORTATION FEDERAL AVIATION ADMINISTRATION ATO - TECHNICAL OPERATIONS EASTERN SERVICE AREA					
ATCT TOWER SIMULATION SYSTEM GENERAL COVER SHEET, INDEX, AND VICINITY MAP					
WILKES-BARRE			WILKES-BARRE/SCRANTON INTL AIRPORT		
REVIEWED BY	SUBMITTED BY	APPROVED BY	DATE	JCN	REV
	DO NOT SIGN	DO NOT SIGN	05/08/2026	JCN	25014162
DESIGNED	JH	ISSUED BY	EG	ENGINEERING SERVICES	DRAWING NO
DRAWN	EG	ENGINEERING SERVICES	INFRASTRUCTURE	AVP-25014162-G001	
CHECKED	DW				

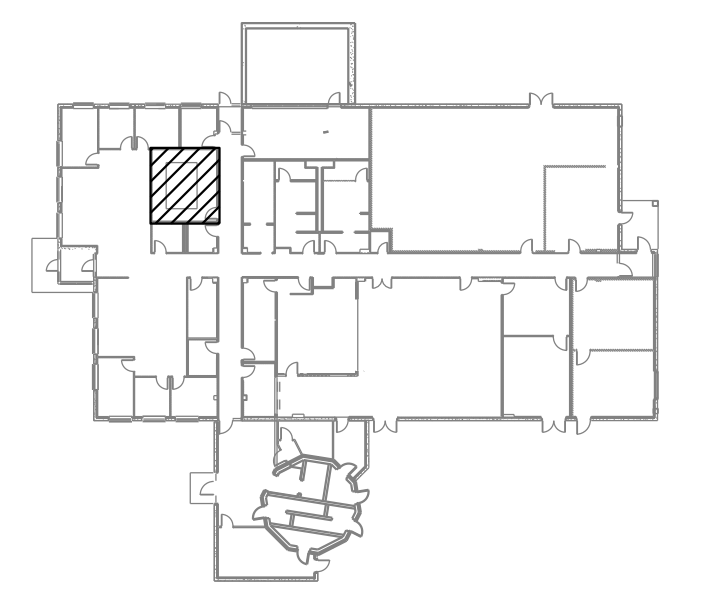
AVP-25014162-G001.dwg
 05/08/2026 9:34:40 AM
 Plotted by: SRVC-CALLEG-EDMS-COORD

ISSUED FOR CONSTRUCTION
 EDMS:AVP-25014162-G001.dwg



- KEY NOTES:**
- 1 REMOVE 12' (THREE 4' FIXTURES) RECESSED STRIP FLUORESCENT FIXTURES AND ALL ASSOCIATED CONDUIT AND WIRING UP TO UN-SWITCHED CIRCUIT FOR NEW WORK REQUIREMENT (TOTAL 4).
 - 2 REMOVE 4' RECESSED STRIP FLUORESCENT FIXTURES AND ALL ASSOCIATED CONDUIT AND WIRING UP TO UN-SWITCHED CIRCUIT FOR NEW WORK REQUIREMENT (TOTAL 10).
 - 3 REMOVE 6" OPEN RECESSED FLUORESCENT DOWN LIGHTS AND ALL ASSOCIATED CONDUIT AND WIRING UP TO UN-SWITCHED CIRCUIT FOR NEW WORK REQUIREMENT (TOTAL 3).
 - 4 REMOVE 4' UNDER CABINET FLUORESCENT FIXTURES AND ALL ASSOCIATED CONDUIT AND WIRING UP TO UN-SWITCHED CIRCUIT FOR NEW WORK REQUIREMENT (TOTAL 2).
 - 5 REMOVE 277V, 1P-20A SINGLE POLE SWITCH AND ALL ASSOCIATED CONDUIT AND WIRING UP TO UN-SWITCHED CIRCUIT FOR NEW WORK REQUIREMENT (TOTAL 1).
 - 6 REMOVE 277V, 1P-20A SINGLE POLE DIMMING SWITCH AND ALL ASSOCIATED CONDUIT AND WIRING UP TO UN-SWITCHED CIRCUIT FOR NEW WORK REQUIREMENT (TOTAL 3). RETAIN EXISTING BACK BOX FOR REUSE.

- LEGEND:**
- RECESSED OPEN DOWNLIGHT TO BE REMOVED
 - RECESSED LINEAR STRIP LIGHT TO BE REMOVED
 - 4' UNDER CABINET LIGHT TO BE REMOVED
 - NEW 2'X4' RECESSED LED TROFFER W/ DIMMING
 - SINGLE POLE DIMMING SWITCH
 - SINGLE POLE SWITCH



KEY PLAN

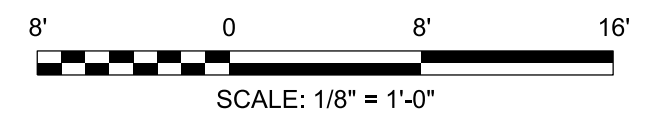
1 ATCT BASE BUILDING GROUND LEVEL LIGHTING PLAN-DEMOLITION
D001 SCALE: 1/8" = 1'-0"

PARSONS
 PTSI Managed Services Inc.
 100 Walnut Street
 Pasadena, CA 91124
 202-651-2500



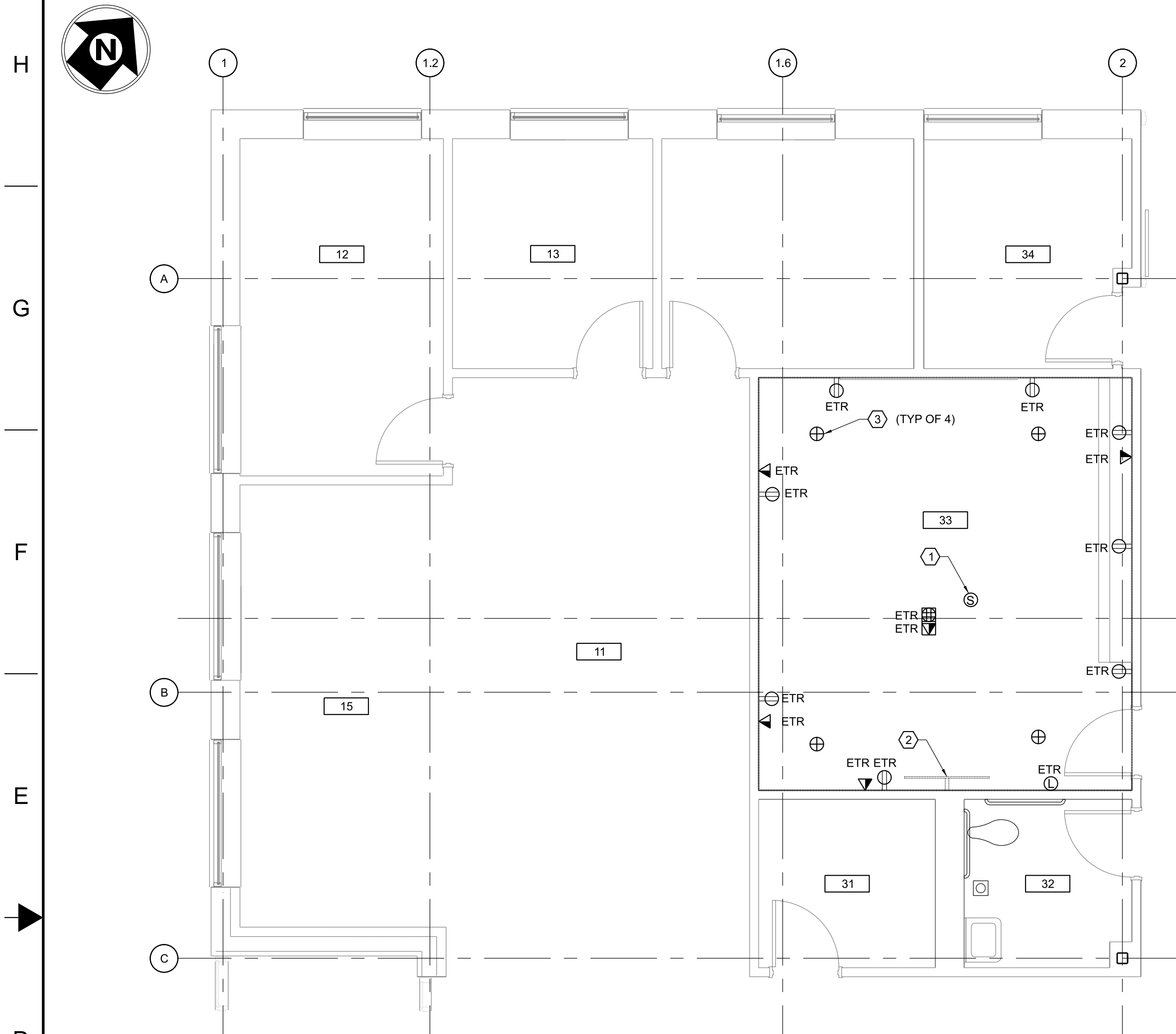
RELEASED FOR: WR 5-ANT-1008
 ISSUED FOR CONSTRUCTION - 05/08/2026

REV	APPROVED DATE	DESCRIPTION	JCN	REDLINE DATE	APVD
DEPARTMENT OF TRANSPORTATION FEDERAL AVIATION ADMINISTRATION ATO - TECHNICAL OPERATIONS EASTERN SERVICE AREA					
ATCT TOWER SIMULATION SYSTEM DEMOLITION GROUND LEVEL LIGHTING PLAN					
WILKES-BARRE			WILKES-BARRE/SCRANTON INTL AIRPORT PA		
REVIEWED BY	SUBMITTED BY	APPROVED BY			
	DO NOT SIGN	DO NOT SIGN			
PROJECT ENGINEER	DESIGNED	ISSUED BY	MGR: ENGINEERING - CENTER A		
	JS	DATE	05/08/2026	JCN	25014162
DRAWN	TJ	ENGINEERING SERVICES	DRAWING NO	AVP-25014162-D001	
CHECKED	DW	INFRASTRUCTURE	REV		



8/16/2026 10:41:12 AM
 P:\25014162-D001.dwg
 Printed by: SRVC-CAEG-EDMS-COORD

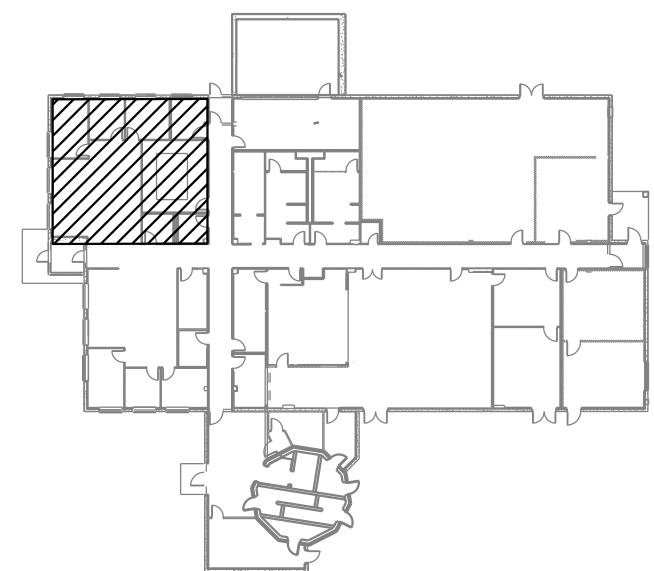
ISSUED FOR AS-BUILT
 EDMS: 8/16/2026 10:41:12 AM



- NOTES:**
- REFER TO PANEL INFORMATION REQUIRED FOR NEW POWER CIRCUITS.
 - SEE REFER TO LOCATIONS OF PANELS, DATA RACK AND FIRE ALARM CONTROL PANEL TO ROUTE CONDUITS AND CABLING TO THE PROJECTED AREA.
 - NEW CEILING HEIGHT WILL 9'-0" AFF.
 - THE HEIGHTS OF ALL NEW RECEPTACLES MUST BE MATCH EXISTING RECEPTACLE OR 12" AFF MIN. TO THE CENTERLINE OF RECEPTACLE.

- KEY NOTES:**
- REMOVE/REINSTALL CEILING MOUNTED SMOKE DETECTOR IN NEW GRID CEILING AND CONNECT TO EXISTING CABLE FOR NEW WORK REQUIREMENT (TOTAL 1).
 - REMOVE/REINSTALL WALL MOUNTED TV AND CONNECT TO EXISTING CIRCUIT FOR NEW WORK REQUIREMENT (TOTAL 1).
 - REMOVE/REINSTALL EXISTING SPRINKLER HEAD FOR NEW WORK REQUIREMENT (TOTAL 4).

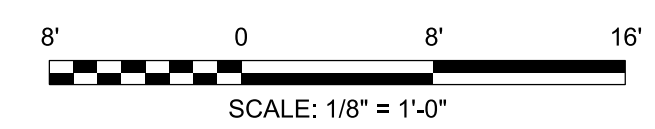
- LEGEND:**
- DUPLEX RECEPTACLE
 - FLOOR MOUNTED QUAD RECEPTACLE
 - QUAD RECEPTACLE
 - FLOOR MOUNTED DATA/ VOICE OUTLET
 - DATA/ VOICE OUTLET
 - FA NOTIFICATION DEVICE
 - FA SMOKE DETECTOR
 - FA SPRINKLER HEAD



KEY PLAN

1 ATCT BASE BUILDING GROUND LEVEL POWER PLAN - DEMOLITION
 D003 SCALE: 1/8"=1'-0"

R:\P\25014162-0002.dwg 10/11/23 AM Plotted by: SRVC-CALLEG-EDMS-COORD



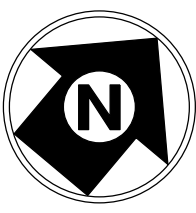
PARSONS
 P.T.S.I. Managed Services Inc.
 100 Walnut Street
 Pasadena, CA 91124
 202-651-2500



RELEASED FOR: WR 5-ANT-1008
 ISSUED FOR CONSTRUCTION - 05/08/2026

REV	APPROVED DATE	DESCRIPTION	JCN	REDLINE DATE	APVD
DEPARTMENT OF TRANSPORTATION FEDERAL AVIATION ADMINISTRATION ATO - TECHNICAL OPERATIONS EASTERN SERVICE AREA					
ATCT TOWER SIMULATION SYSTEM DEMOLITION BASE BUILDING GROUND LEVEL POWER PLAN					
WILKES-BARRE		WILKES-BARRE/SCRANTON INTL AIRPORT		PA	
REVIEWED BY	SUBMITTED BY	APPROVED BY	MGR: ENGINEERING - CENTER A		
	DO NOT SIGN	DO NOT SIGN	DO NOT SIGN	DO NOT SIGN	DO NOT SIGN
DESIGNED	ISSUED BY	DATE	JCN	25014162	
JG	ENGINEERING SERVICES	05/08/2026	JCN	25014162	
DRAWN	INFRASTRUCTURE	DRAWING NO	AVP-25014162-D002		
CHECKED	DW	REV			

ISSUED FOR CONSTRUCTION



GENERAL NOTES:

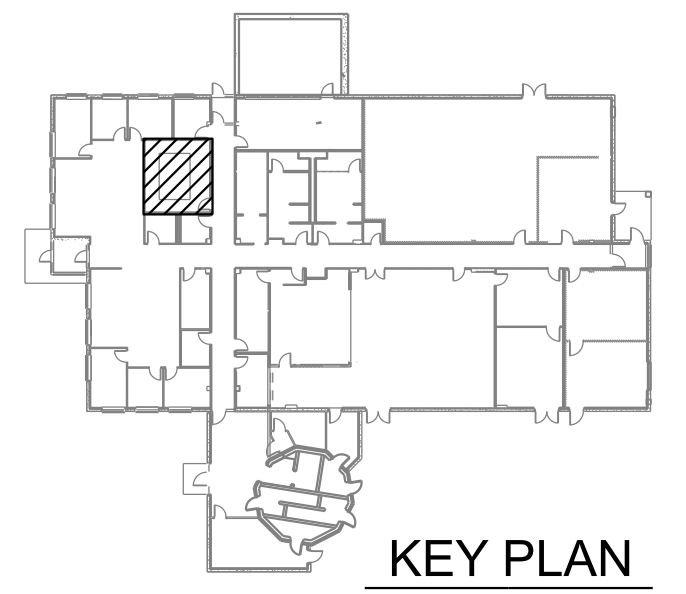
- SEE MECHANICAL DEMOLITION DRAWINGS FOR MORE INFORMATION.
- SEE ELECTRICAL DEMOLITION DRAWINGS FOR MORE INFORMATION.
- PRIOR TO DEMO PROTECT ALL DOORS AND DOOR FRAMES SCHEDULED TO REMAIN IN PLACE. MAINTAIN PROTECTION THROUGH END OF NEW WORK CONSTRUCTION.

KEY NOTES:

- REMOVE CARPETING FROM ENTIRE ROOM.
- REMOVE VINYL BASE FROM ENTIRE ROOM.
- REMOVE WALL MOUNTED WHITE BOARD AND SALVAGE TO FAA.
- REMOVE BASE CABINETS, COUNTER TOP, AND WALL MOUNTED CABINETS (INCLUDING UPPER WALL SOFFIT) AND SALVAGE TO THE FAA.
- REMOVE GYPSUM BOARD CEILING AND SOFFIT FROM ENTIRE ROOM.
- REMOVE CEILING RECESSED PROJECTION SCREEN AND SALVAGE TO THE FAA.
- REMOVE SMOKE DETECTOR. STORE SMOKE DETECTORS AND AFTER COMPLETION OF WORK, REINSTALL. SEE ELECTRICAL DRAWINGS.
- REMOVE SPRINKLER HEAD AND SALVAGE FOR REINSTALLATION IN NEW WORK.

LEGEND

- DEMO'D ITEMS
- EXISTING ITEMS



KEY PLAN

1 CONFERENCE ROOM DEMOLITION FLOOR PLAN
D003 SCALE: 1/2" = 1'-0"

2 CONFERENCE ROOM DEMOLITION REFLECTED CEILING PLAN
D003 SCALE: 1/2" = 1'-0"



(E) BASE CABINETS, COUNTER TOP, AND WALL MOUNTED CABINETS TO BE REMOVED



(E) GYP. BOARD CEILING AND SOFFIT TO BE REMOVED



DROP ALL (E) SPRINKLER HEADS TO 9'-0" ABOVE FINISHED FLOOR



REFERENCE PHOTOS
NOT TO SCALE



SCALE: 1/2" = 1'-0"

PARSONS
PTSI Managed Services Inc.
100 Walnut Street
Pasadena, CA 91124
202-651-2500

RELEASED FOR: WR 5-ANT-1008
ISSUED FOR CONSTRUCTION - 05/08/2026

REV	APPROVED DATE	DESCRIPTION	JCN	REDLINE DATE	APVD
DEPARTMENT OF TRANSPORTATION FEDERAL AVIATION ADMINISTRATION ATO - TECHNICAL OPERATIONS EASTERN SERVICE AREA					
ATCT TOWER SIMULATION SYSTEM ARCHITECTURAL DEMOLITION CONFERENCE ROOM FLOOR AND CEILING PLAN					
WILKES-BARRE		WILKES-BARRE/SCRANTON INTL AIRPORT		PA	
REVIEWED BY	SUBMITTED BY	APPROVED BY	MGR: ENGINEERING - CENTER A		
	DO NOT SIGN	DO NOT SIGN	DO NOT SIGN	DO NOT SIGN	DO NOT SIGN
PROJECT ENGINEER	DESIGNED	ISSUED BY	DATE	JCN	25014162
	MH	ENGINEERING SERVICES	05/08/2026	JCN	25014162
DRAWN	WAC	INFRASTRUCTURE	DRAWING NO	AVP-25014162-D003	
CHECKED	DW				

AVP-25014162-D003.dwg 10:35:39 AM 05/08/2026 Printed by: SRVC-CALG-EDMS-COORD

ISSUED FOR AS-BUILT EDMS:AVP-25014162-D003.dwg



KEY NOTES:

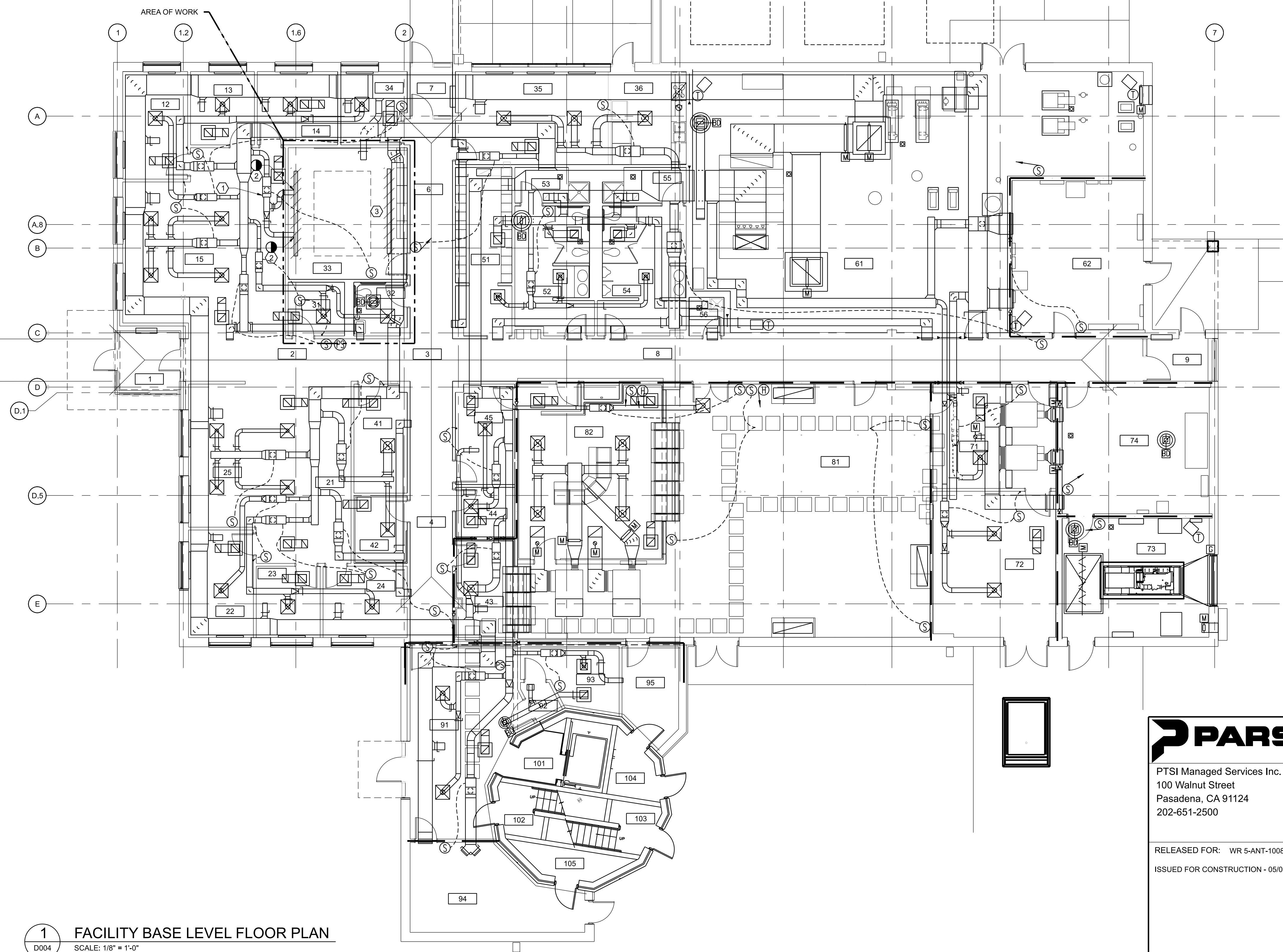
- 1 LOCKOUT/ DEACTIVATE THE ELECTRIC REHEAT COIL ON THE EXISTING VAV TERMINAL UNIT.
- 2 DISCONNECT AND REMOVE EXISTING LINEAR SUPPLY DIFFUSER.
- 3 REMOVE LINEAR RETURN DIFFUSER.

ROOM SCHEDULE

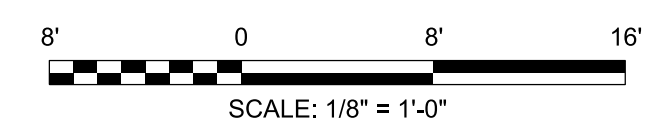
NO.	ROOM NAME	NO.	ROOM NAME	NO.	ROOM NAME
1	VESTIBULE	24	TECH LIBRARY	54	MEN
2	RECEPTION AREA	25	OPEN AREA	55	SHOWER
3	CORRIDOR A	31	LAN	56	JANITOR
4	CORRIDOR B	32	DRUG TEST ROOM	61	MECHANICAL ROOM
6	CORRIDOR C	33	CONFERENCE ROOM	62	SWITCH GEAR ROOM
7	VESTIBULE C	34	AT OFFICE		
8	CORRIDOR D	35	BREAKROOM		
9	VESTIBULE D	36	FOOD PREP	71	ENVIRONMENTAL SHOP
11	AT SECRETARY	41	COPY/ADMIN STOR	72	TECH STORAGE/WORK SPACE
12	AT MANAGER	42	CBI DEBRIEF ROOM	73	EG ROOM
13	AT	43	TTG LAB	74	UPS
14	OP SUPS	44	TAPE PLAYBACK		
15	OPEN AREA	45	SUPERVISOR OFFICE	81	EQUIPMENT ROOM
21	AF SECRETARY	51	LOCKER ROOM	82	TRACON OPERATIONS
22	AF MANAGER	52	WOMEN		
23	AF	53	SHOWER		

TOWER LINK

91	TOWER LINK	93	SMOKING ROOM	95	CABLE ROOM
92	SMOKING ROOM VESTIBULE	94	PUMP ROOM		



1 FACILITY BASE LEVEL FLOOR PLAN
D004 SCALE: 1/8" = 1'-0"



PARSONS
 PTSI Managed Services Inc.
 100 Walnut Street
 Pasadena, CA 91124
 202-651-2500



RELEASED FOR: WR 5-ANT-1008
ISSUED FOR CONSTRUCTION - 05/08/2026

REV	APPROVED DATE	DESCRIPTION	JCN	REDLINE DATE	APVD

DEPARTMENT OF TRANSPORTATION
FEDERAL AVIATION ADMINISTRATION
 ATO - TECHNICAL OPERATIONS EASTERN SERVICE AREA

ATCT
TOWER SIMULATION SYSTEM
DEMOLITION
BASE LEVEL HVAC PLAN

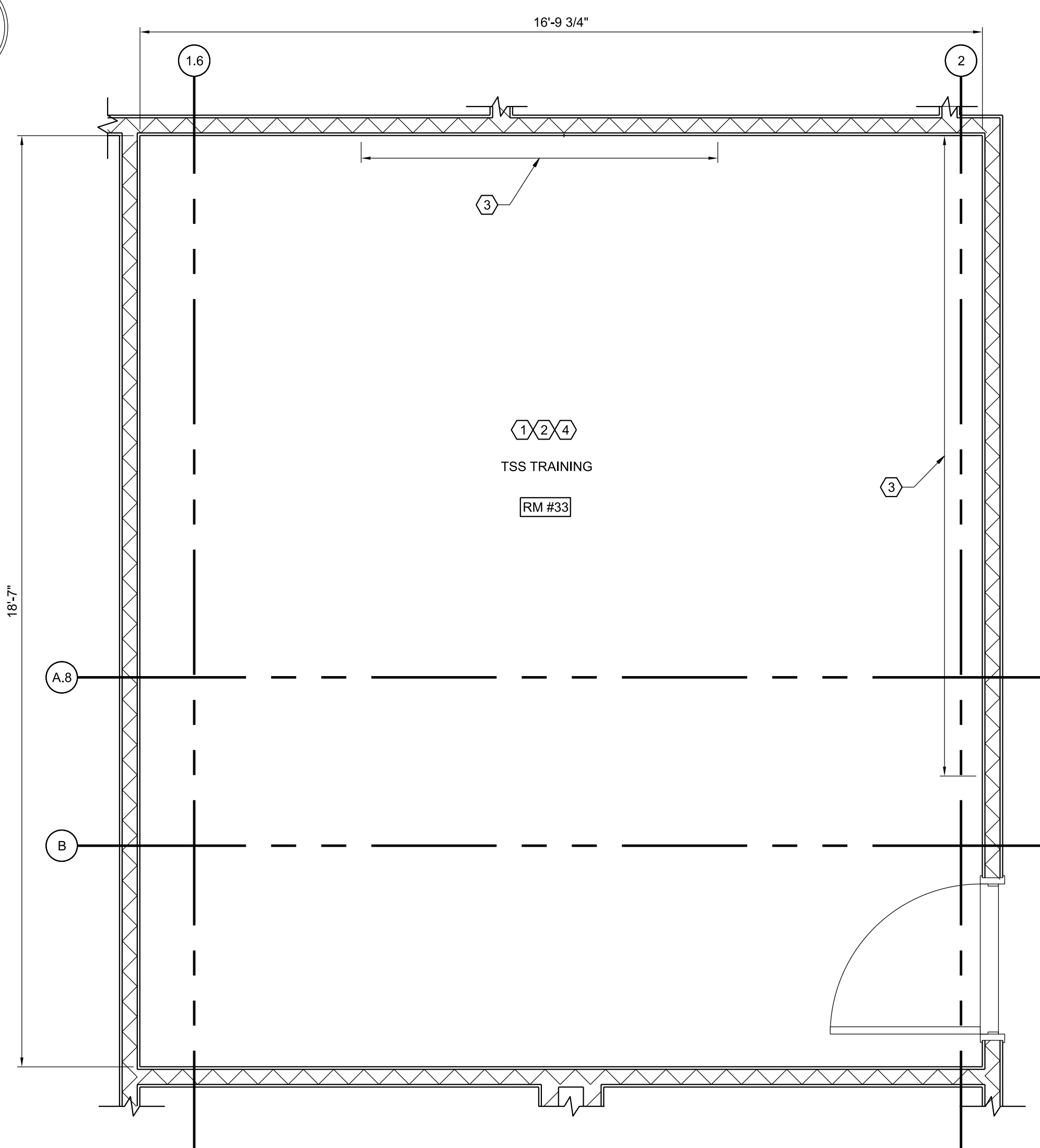
WILKES-BARRE WILKES-BARRE/SCRANTON INTL AIRPORT PA

REVIEWED BY	SUBMITTED BY	APPROVED BY
PROJECT ENGINEER	DESIGNED	ISSUED BY
DA	DA	JCN
DRAWN	ENGINEERING SERVICES	DATE
MP	INFRASTRUCTURE	05/08/2026
CHECKED		DRAWING NO
		AVP-25014162-D004

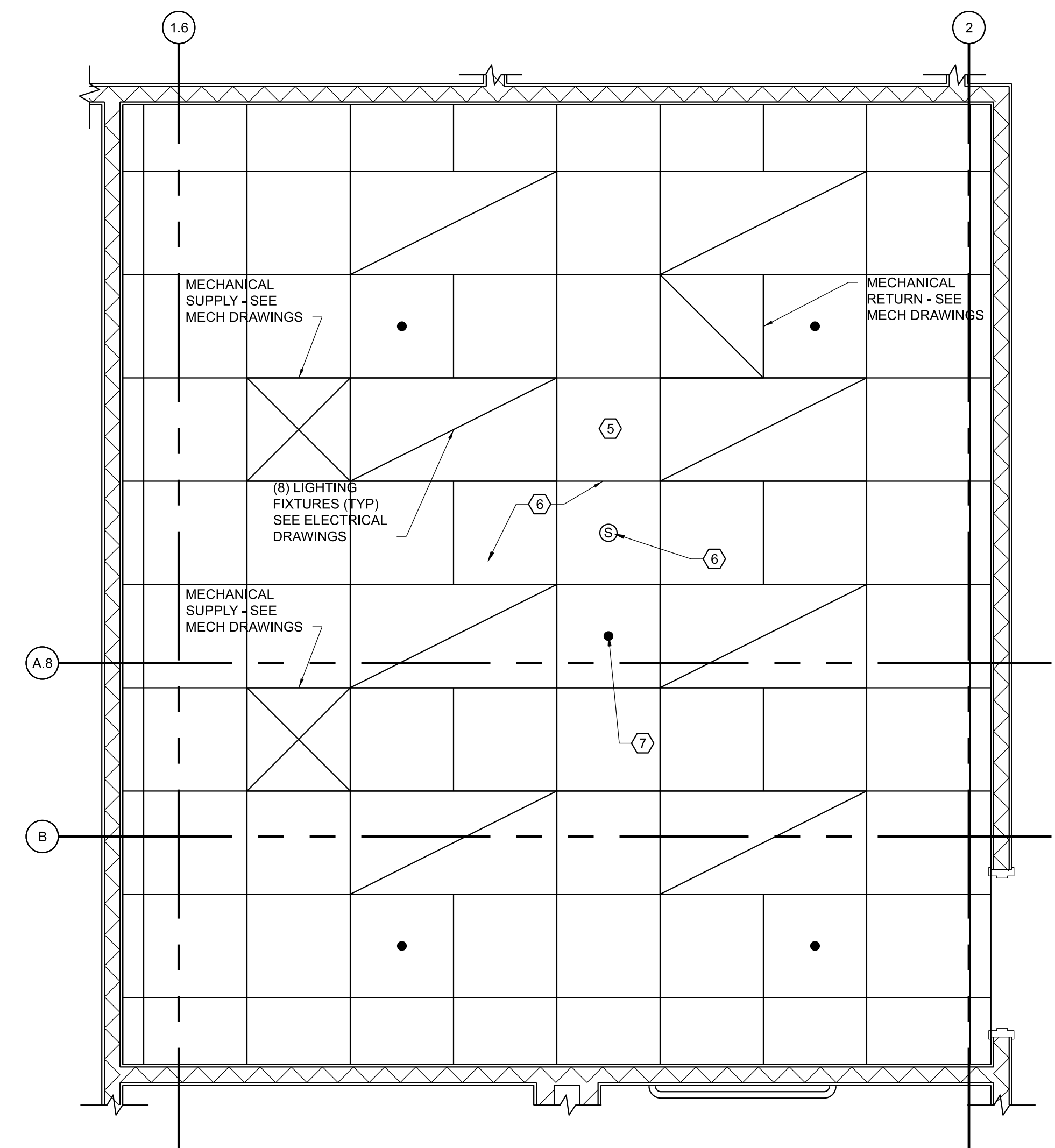
MGR: ENGINEERING - CENTER A
 25014162
 REV

8/19/2025 11:42:00 AM Plotted by: SRVC-CALG-EDMS-COORD

ISSUED FOR CONSTRUCTION



1 CONFERENCE ROOM NEW WORK FLOOR PLAN
A001 SCALE: 1/2" = 1'-0"

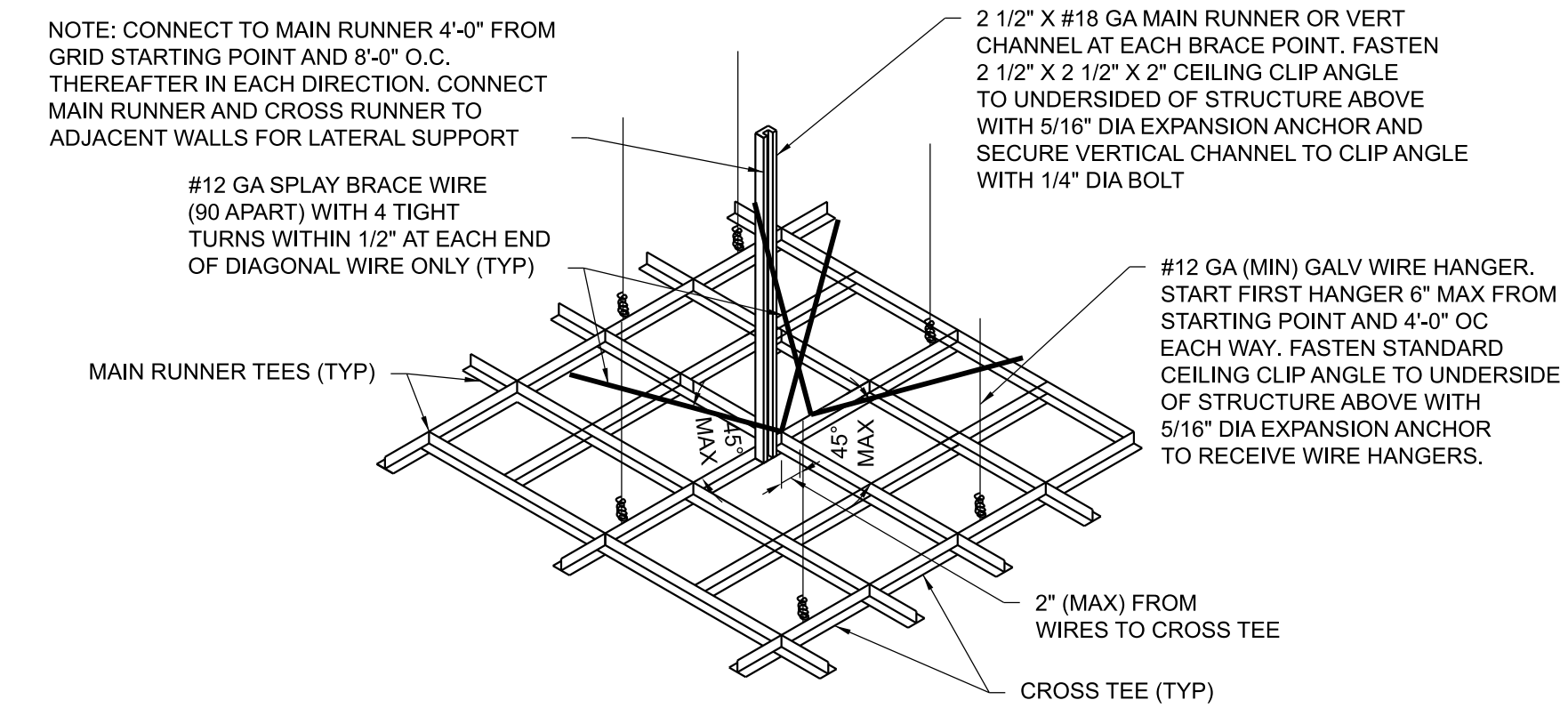


2 CONFERENCE ROOM NEW REFLECTED CEILING PLAN
A001 SCALE: 1/2" = 1'-0"

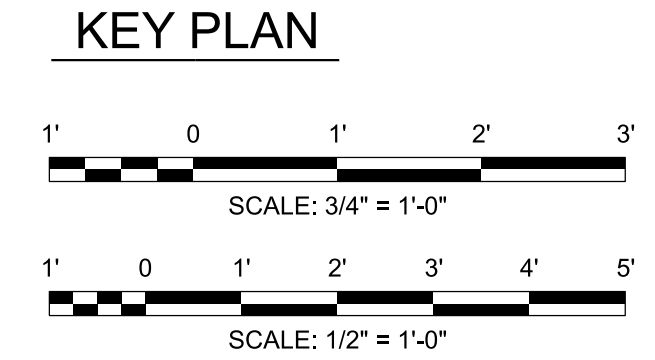
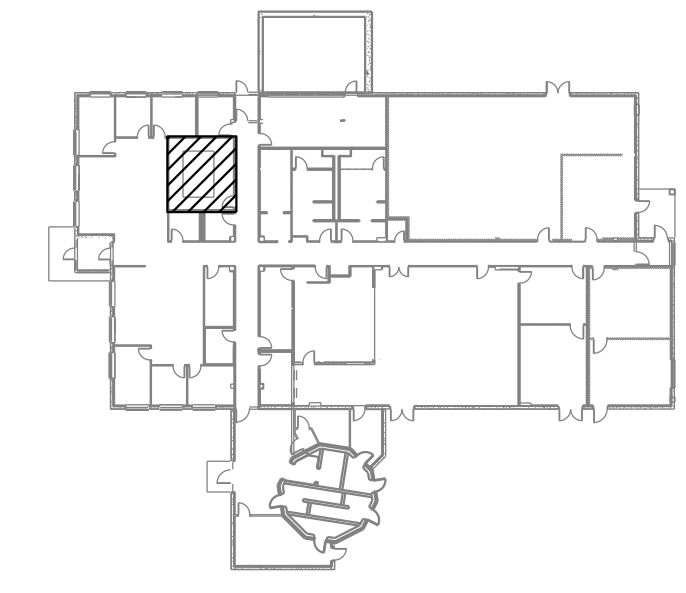
- GENERAL NOTES:**
- ADJUST HEIGHT AND LOCATION OF ALL SPRINKLER HEADS TO MATCH NEW CEILING GRID LAYOUT AS SHOWN IN THIS DRAWING. ALL SPRINKLER HEADS ARE TO BE CENTERED WITHIN NEW ACT CEILING TILES.
 - SEE ELECTRICAL DRAWINGS FOR MORE INFORMATION.
 - PRIOR TO DEMO PROTECT ALL DOORS AND DOOR FRAMES SCHEDULED TO REMAIN IN PLACE. MAINTAIN PROTECTION THROUGH END OF NEW WORK CONSTRUCTION.

- KEY NOTES:**
- PROVIDE NEW STATIC DISSIPATING(SD) CARPETING IN ENTIRE ROOM, COLOR TO BE DARK GREY.
 - PROVIDE NEW VINYL BASEBOARD IN ENTIRE ROOM, COLOR TO BE DARK GREY.
 - PATCH AND REPAIR ANY WALL DAMAGE LEFT FROM CABINETS REMOVED.
 - PREP WALLS FOR NEW PAINT, COLOR TO BE DETERMINED BY FAA.
 - PROVIDE NEW CEILING GRID CENTERED IN ROOM AND AT 9'-0" ABOVE FINISH FLOOR. PROVIDE NEW 2'-0" X 2'-0" ACT CEILING TILES. COLOR TO BE DETERMINED BY FAA. FOR CEILING GRID DETAIL SEE 3/A001 ON THIS SHEET.
 - PROVIDE NEW SMOKE DETECTOR CENTERED WITHIN NEW ACT CEILING TILE.
 - PROVIDE REMOVED SPRINKLER HEAD AT NEW LOCATION SHOWN.

- LEGEND**
- SPRINKLER HEAD
 - ⊙ SMOKE DETECTOR



3 CEILING GRID BRACING
A001 SCALE: 3/4" = 1'-0"



PARSONS
PTSI Managed Services Inc.
100 Walnut Street
Pasadena, CA 91124
202-651-2500

RELEASED FOR: WR 5-ANT-1008
ISSUED FOR CONSTRUCTION - 05/08/2026

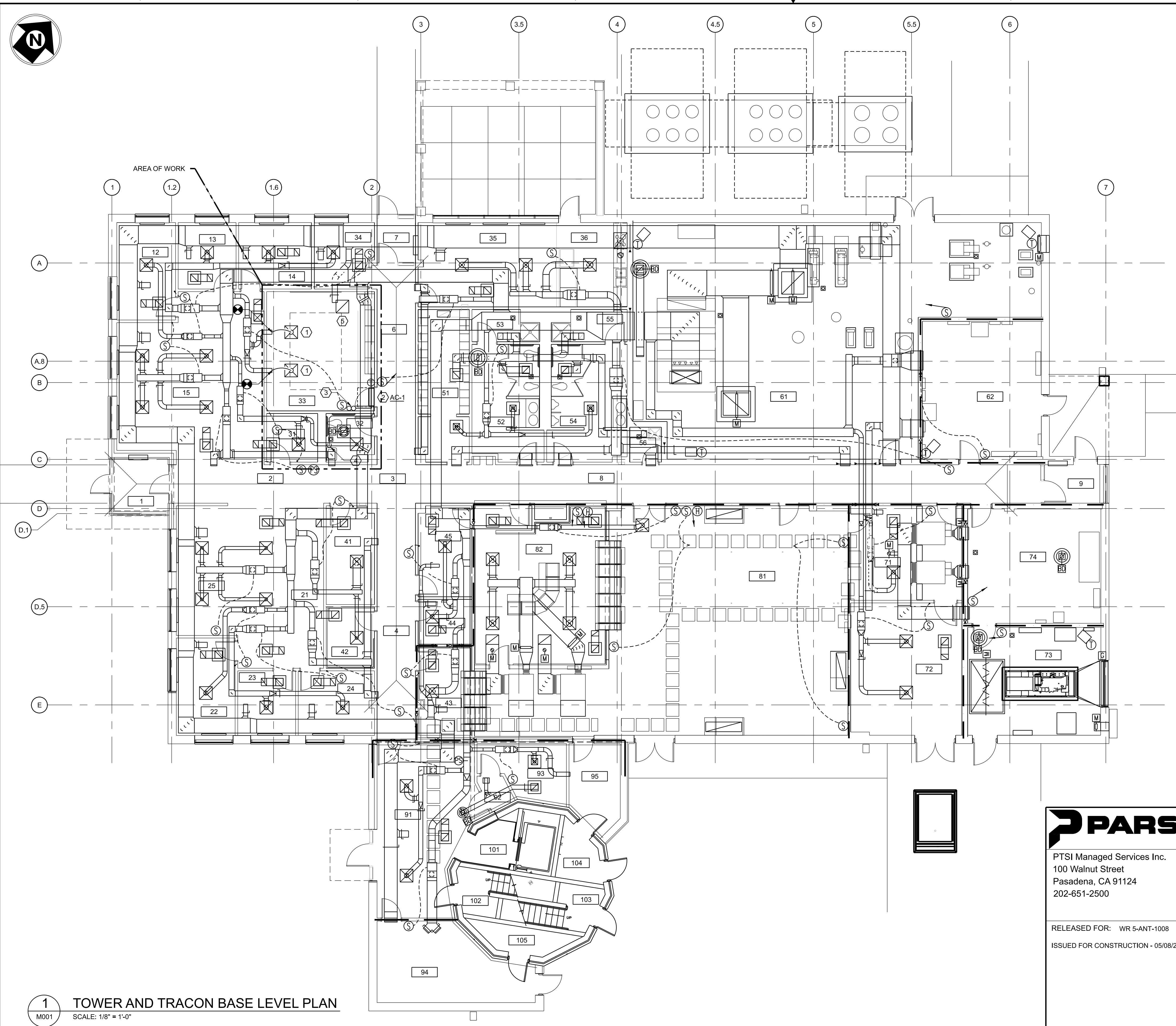
REV	APPROVED DATE	DESCRIPTION	JCN	REDLINE DATE	APVD
	05/04/2026	CONSTRUCTION DT#SO23071			
DEPARTMENT OF TRANSPORTATION FEDERAL AVIATION ADMINISTRATION ATCT - TECHNICAL OPERATIONS EASTERN SERVICE AREA					
ATCT TOWER SIMULATION SYSTEM ARCHITECTURAL NEW WORK ENLARGED PARTIAL FLOOR PLAN AND RCP					
WILKES-BARRE		WILKES-BARRE/SCRANTON INTL AIRPORT		PA	
REVIEWED BY	SUBMITTED BY	APPROVED BY			
	DO NOT SIGN	DO NOT SIGN			
PROJECT ENGINEER	DESIGNED	ISSUED BY	MGR: ENGINEERING - CENTER A		
	MH	DATE	05/04/2026	JCN	25014162
DRAWN	WAC	ENGINEERING SERVICES	DRAWING NO		
CHECKED	DW	INFRASTRUCTURE	AVP-25014162-A001		



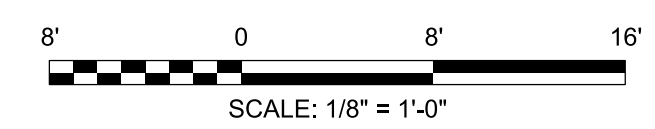
- KEY NOTES:**
- 1 PROVIDE NEW 24"x24", 10"Ø NECK, STEEL, THREE CONE DIFFUSER. COORDINATE EXACT LOCATION WITH NEW CEILING GRID AND NEW LIGHT FIXTURES. PROVIDE FLEXIBLE DUCTWORK AND CONNECT TO EXISTING DUCTWORK AT POINT INDICATED. PROVIDE DUCT TRANSITION FROM 8"Ø TO 10"Ø AS REQUIRED TO MAKE THE CONNECTION.
 - 2 PROVIDE NEW 1 TON HIGHWALL INDOOR UNIT. INSTALL ABOVE DOOR HEAD JAMB AND NO HIGHER THAN 12" (OR MORE) BELOW FINISHED CEILING. PROVIDE WITH WALL MOUNTED PROGRAMMABLE THERMOSTAT.
 - 3 PROVIDE REFRIGERANT LIQUID & REFRIGERANT SUCTION PIPING TO CONDENSING UNIT ON ROOF. INSULATE PER 2021 IECC TABLE C403.12.3 MINIMUM PIPE INSULATION THICKNESS.
 - 4 PROVIDE OPEN SITE DRAIN AND CONNECT TO TAIL PIPE OF LAVATORY. ROUTE 3/4" CONDENSATE PIPING FROM INDOOR UNIT TO OPEN SITE DRAIN BELOW LAVATORY. INSTALL WITH A MINIMUM OF 1/8" PER LINEAR FOOT (1%) SLOPE IN THE DIRECTION OF CONDENSATE FLOW. PROVIDE CODE REQUIRED AIR GAP. INSULATE PIPING PER 2021 IECC TABLE. C403.12.3 MINIMUM PIPE INSULATION THICKNESS.
ALTERNATIVELY, PROVIDE UNIT WITH EXTERNAL CONDENSATE PUMP AND ROUTE CONDENSATE TO EXISTING MOP SINK IN 56-JANITORS CLOSET.
 - 5 PROVIDE NEW 24"x24" (22"x22" NECK SIZE) STEEL PERFORATED RETURN GRILL. COORDINATE EXACT LOCATION WITH NEW CEILING GRID AND NEW LIGHT FIXTURES.

ROOM SCHEDULE					
NO.	ROOM NAME	NO.	ROOM NAME	NO.	ROOM NAME
1	VESTIBULE	24	TECH LIBRARY	54	MEN
2	RECEPTION AREA	25	OPEN AREA	55	SHOWER
3	CORRIDOR A	31	LAN	56	JANITOR
4	CORRIDOR B	32	DRUG TEST ROOM	61	MECHANICAL ROOM
6	CORRIDOR C	33	CONFERENCE ROOM	62	SWITCH GEAR ROOM
7	VESTIBULE C	34	AT OFFICE		
8	CORRIDOR D	35	BREAKROOM		
9	VESTIBULE D	36	FOOD PREP	71	ENVIRONMENTAL SHOP
11	AT SECRETARY	41	COPY/ADMIN STOR	72	TECH STORAGE/WORK SPACE
12	AT MANAGER	42	CBI DEBRIEF ROOM	73	EG ROOM
13	AT	43	TTG LAB	74	UPS
14	OP SUPS	44	TAPE PLAYBACK		
15	OPEN AREA	45	SUPERVISOR OFFICE	81	EQUIPMENT ROOM
21	AF SECRETARY	51	LOCKER ROOM	82	TRACON OPERATIONS
22	AF MANAGER	52	WOMEN		
23	AF	53	SHOWER		

TOWER LINK			
NO.	ROOM NAME	NO.	ROOM NAME
91	TOWER LINK	93	SMOKING ROOM
92	SMOKING ROOM VESTIBULE	94	PUMP ROOM
		95	CABLE ROOM



1 TOWER AND TRACON BASE LEVEL PLAN
M001 SCALE: 1/8" = 1'-0"



PARSONS
PTSI Managed Services Inc.
100 Walnut Street
Pasadena, CA 91124
202-651-2500



RELEASED FOR: WR 5-ANT-1008
ISSUED FOR CONSTRUCTION - 05/08/2026

REV	APPROVED DATE	DESCRIPTION	JCN	REDLINE DATE	APVD

DEPARTMENT OF TRANSPORTATION
FEDERAL AVIATION ADMINISTRATION
ATO - TECHNICAL OPERATIONS EASTERN SERVICE AREA

ATCT
TOWER SIMULATION SYSTEM
MECHANICAL
TOWER AND TRACON BASE LEVEL HVAC PLAN

WILKES-BARRE WILKES-BARRE/SCRANTON INTL AIRPORT PA

REVIEWED BY	SUBMITTED BY	APPROVED BY

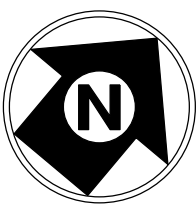
PROJECT ENGINEER DA ISSUED BY DATE 05/08/2026 JCN 25014162

DRAWN JG ENGINEERING SERVICES INFRASTRUCTURE DRAWING NO AVP-25014162-M001

CHECKED MP

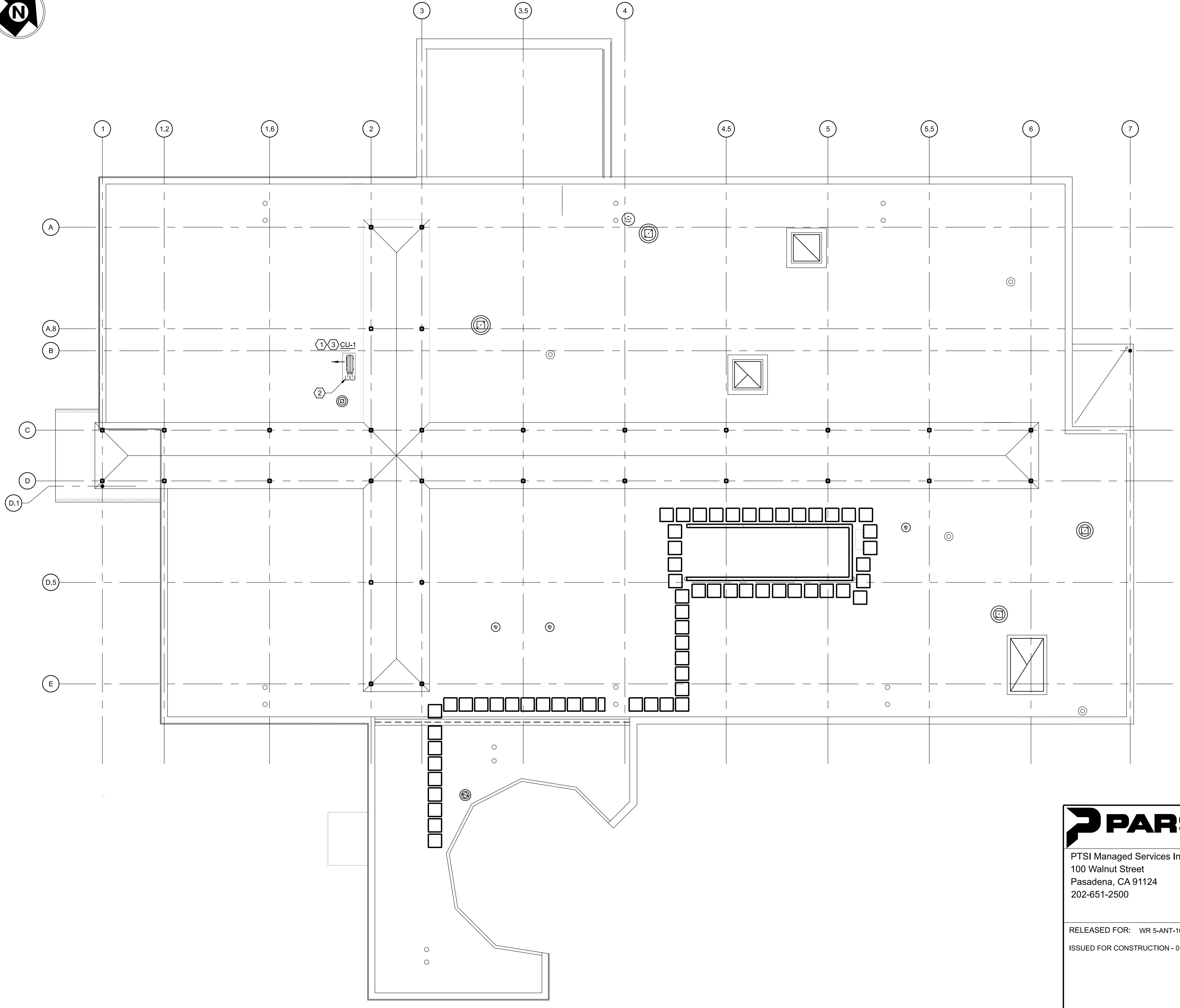
8/19/2025 11:24:12 AM
 05/08/2026 11:24 PM
 Plotted by: SRVC-CALG-EDMS-COORD
 EDMS: 8/19/2025 11:24:12 AM

ISSUED FOR CONSTRUCTION

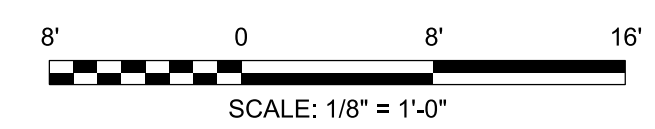


KEY NOTES

- 1 PROVIDE NEW 1 TON, COOLING ONLY CONDENSING UNIT ON ROOF. PROVIDE WITH LOW AMBIENT COOLING KIT CAPABLE OF COOLING DOWN TO 10°F.
- 2 REFRIGERANT LIQUID & REFRIGERANT SUCTION PIPING DOWN TO INDOOR UNIT BELOW. INSULATE PIPING PER 2021 IECC TABLE C403.12.3 MINIMUM PIPE INSULATION THICKNESS.
- 3 MAINTAIN A MINIMUM 36" SERVICE CLEARANCE BETWEEN EQUIPMENT PER THE IMC.



1 TRACON AND TOWER LINK HVAC ROOF PLAN
 M002 SCALE: 1/8" = 1'-0"



PARSONS
 PTSI Managed Services Inc.
 100 Walnut Street
 Pasadena, CA 91124
 202-651-2500

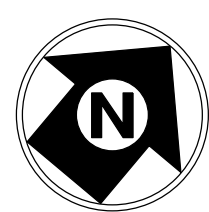


RELEASED FOR: WR 5-ANT-1008
 ISSUED FOR CONSTRUCTION - 05/08/2026

REV	APPROVED DATE	DESCRIPTION	JCN	REDLINE DATE	APVD
DEPARTMENT OF TRANSPORTATION FEDERAL AVIATION ADMINISTRATION ATO - TECHNICAL OPERATIONS EASTERN SERVICE AREA					
ATCT TOWER SIMULATION SYSTEM MECHANICAL TRACON AND TOWER LINK HVAC ROOF PLAN					
WILKES-BARRE		WILKES-BARRE/SCRANTON INTL AIRPORT		PA	
REVIEWED BY	SUBMITTED BY	APPROVED BY	MGR: ENGINEERING - CENTER A		
	DO NOT SIGN	DO NOT SIGN	DO NOT SIGN	DO NOT SIGN	DO NOT SIGN
DESIGNED	DA	ISSUED BY	DATE	JCN	25014162
DRAWN	PS	ENGINEERING SERVICES	DRAWING NO	AVP-25014162-M002	
CHECKED	MP	INFRASTRUCTURE	REV		

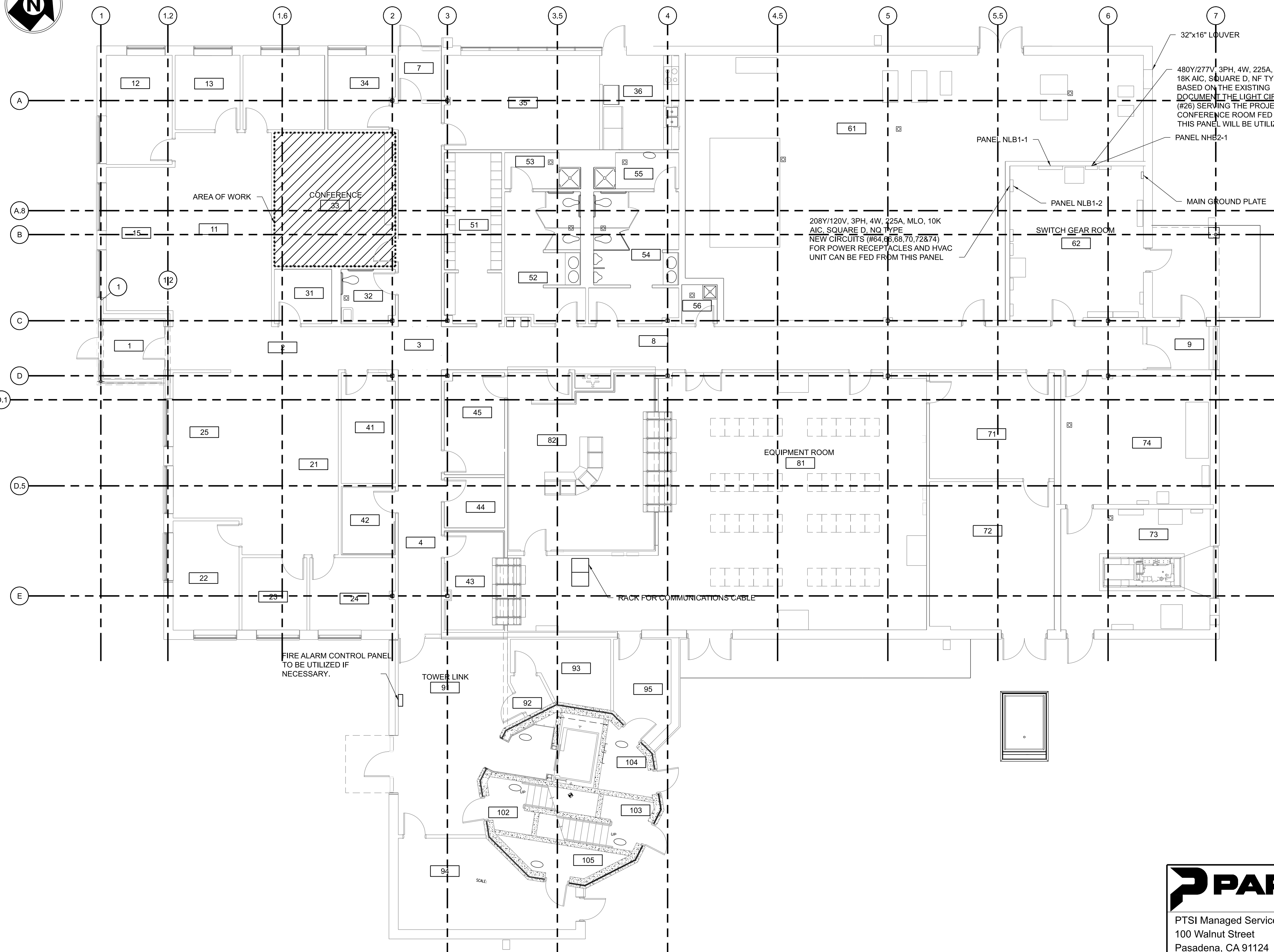
AVP-25014162-M002.dwg
 10/24/24 AM
 03/26/2026
 Plotted by: SRVC-CALG-EDMS-COORD

EDMS:AVP-25014162-M002.dwg



NOTES:

1. REFER TO ELECTRICAL POWER AND LIGHTING PLANS.
2. REFER TO PANEL SCHEDULE FOR MORE INFORMATION FOR NEW LIGHTING AND CIRCUITS.
3. SEE REFER TO LOCATIONS OF PANELS, DATA RACK AND FIRE ALARM CONTROL PANEL TO ROUTE CONDUITS AND CABLING TO THE PROJECTED AREA.

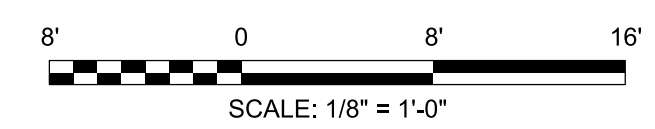


208Y/120V, 3PH, 4W, 225A, MLO, 10K AIC, SQUARE D, NO TYPE NEW CIRCUITS (#64, 66, 68, 70, 72&74) FOR POWER RECEPTACLES AND HVAC UNIT CAN BE FED FROM THIS PANEL

32"x16" LOUVER
 480Y/277V, 3PH, 4W, 225A, MCB, 18K AIC, SQUARE D, NF TYPE BASED ON THE EXISTING DOCUMENT THE LIGHT CIRCUIT (#28) SERVING THE PROJECTED CONFERENCE ROOM FED FROM THIS PANEL WILL BE UTILIZED.

FIRE ALARM CONTROL PANEL TO BE UTILIZED IF NECESSARY.

1 ATCT BASE BUILDING GROUND LEVEL FLOOR PLAN-ELECTRICAL
 E001 SCALE: 1/8" = 1'-0"



PARSONS
 PTSI Managed Services Inc.
 100 Walnut Street
 Pasadena, CA 91124
 202-651-2500

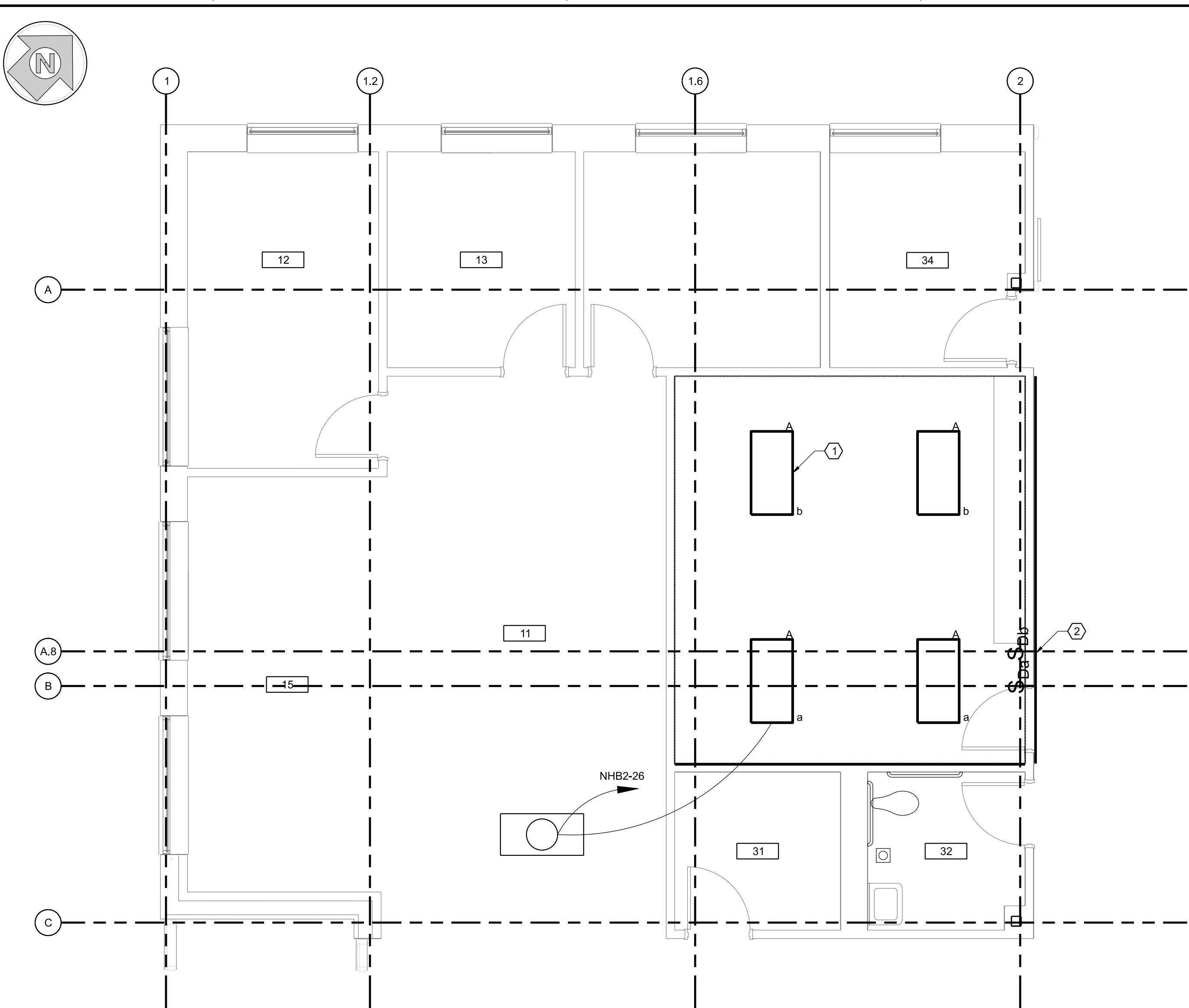


RELEASED FOR: WR 5-ANT-1008
 ISSUED FOR CONSTRUCTION - 05/08/2026

REV	APPROVED DATE	DESCRIPTION	JCN	REDLINE DATE	APVD
DEPARTMENT OF TRANSPORTATION FEDERAL AVIATION ADMINISTRATION ATO - TECHNICAL OPERATIONS EASTERN SERVICE AREA					
ATCT TOWER SIMULATION SYSTEM ELECTRICAL BASE BUILDING GROUND LEVEL FLOOR PLAN					
WILKES-BARRE		WILKES-BARRE/SCRANTON INTL AIRPORT		PA	
REVIEWED BY	SUBMITTED BY	APPROVED BY			
	DO NOT SIGN	DO NOT SIGN			
PROJECT ENGINEER	DESIGNED	ISSUED BY	DATE	JCN	APVD
	JS	ENGINEERING SERVICES	05/08/2026	JCN	25014162
DRAWN	JG	INFRASTRUCTURE	DRAWING NO		
CHECKED	DW		AVP-25014162-E001		

8/16/2026 10:40:34 AM
 05/08/2026
 Printed by: SRVC-CALLEG-EDMS-COORD

ISSUED FOR CONSTRUCTION
 EDMS: 8/16/2026 10:40:34 AM



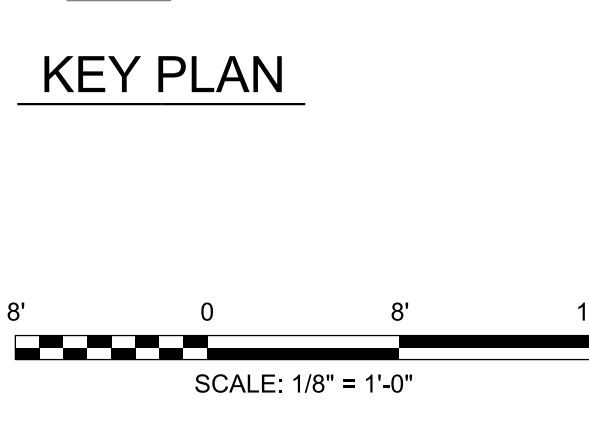
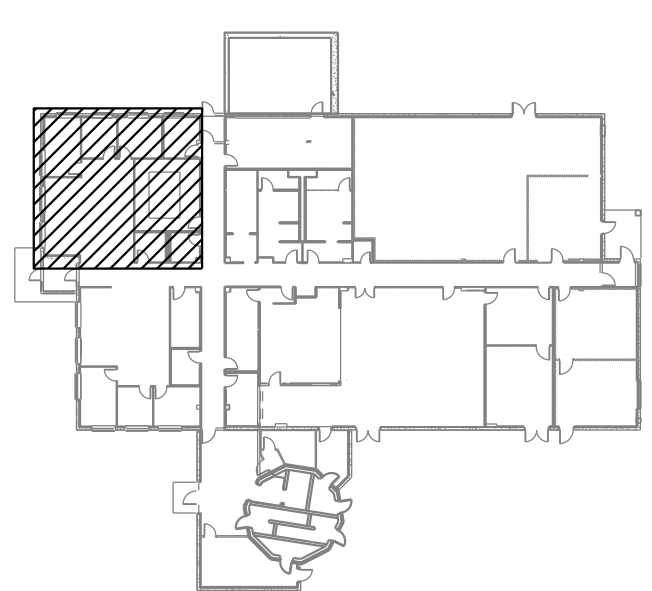
1 ATCT BASE BUILDING GROUND LEVEL LIGHTING PLAN - NEW WORK
 E002 SCALE: 1/8"=1'-0"

- NOTES:**
- REFER TO PANEL INFORMATION ON E001 REQUIRE FOR EXISTING LIGHTING CIRCUITS TO BE UTILIZED.
 - REFER TO LOCATION OF PANEL NHB2 AND UTILIZE EXISTING CIRCUIT (#26) FOR NEW LIGHTS.
 - NEW CEILING HEIGHT WILL BE 9'-0" AFF.

- KEY NOTES:**
- PROVIDED 2'X4' LED DIMMING FIXTURES AND CONNECT TO THE DESIGNATED SWITCH (TOTAL 2). SEE LIGHTING FIXTURE SCHEDULE FOR ADDITIONAL INFORMATION.
 - PROVIDE (2) 277V, 1P-20A SINGLE POLE DIMMING SWITCHES AND ALL ASSOCIATED CONDUIT AND WIRING AND CONNECT TO EXISTING LIGHT CIRCUIT PREVIOUSLY SERVING SAME AREA (NHB2 CKT#26).

- LEGEND:**
- RECESSED OPEN DOWNLIGHT TO BE REMOVED
 - RECESSED LINEAR STRIP LIGHT TO BE REMOVED
 - 4' UNDER CABINET LIGHT TO BE REMOVED
 - NEW 2'X4' RECESSED LED TROFFER W/ DIMMING
 - SINGLE POLE DIMMING SWITCH
 - SINGLE POLE POLE SWITCH

LIGHTING FIXTURE SCHEDULE				
TYPE	DESCRIPTION	LAMPS	VOLTAGE	NOTES
A	2x4, RECESSED CPX LED LAY-IN PANEL, GRID CEILING, STATIC LENSED (A12), DIMMING DRIVER (MIN10)	(1) 4000LM LED/ 4000K	120-277	



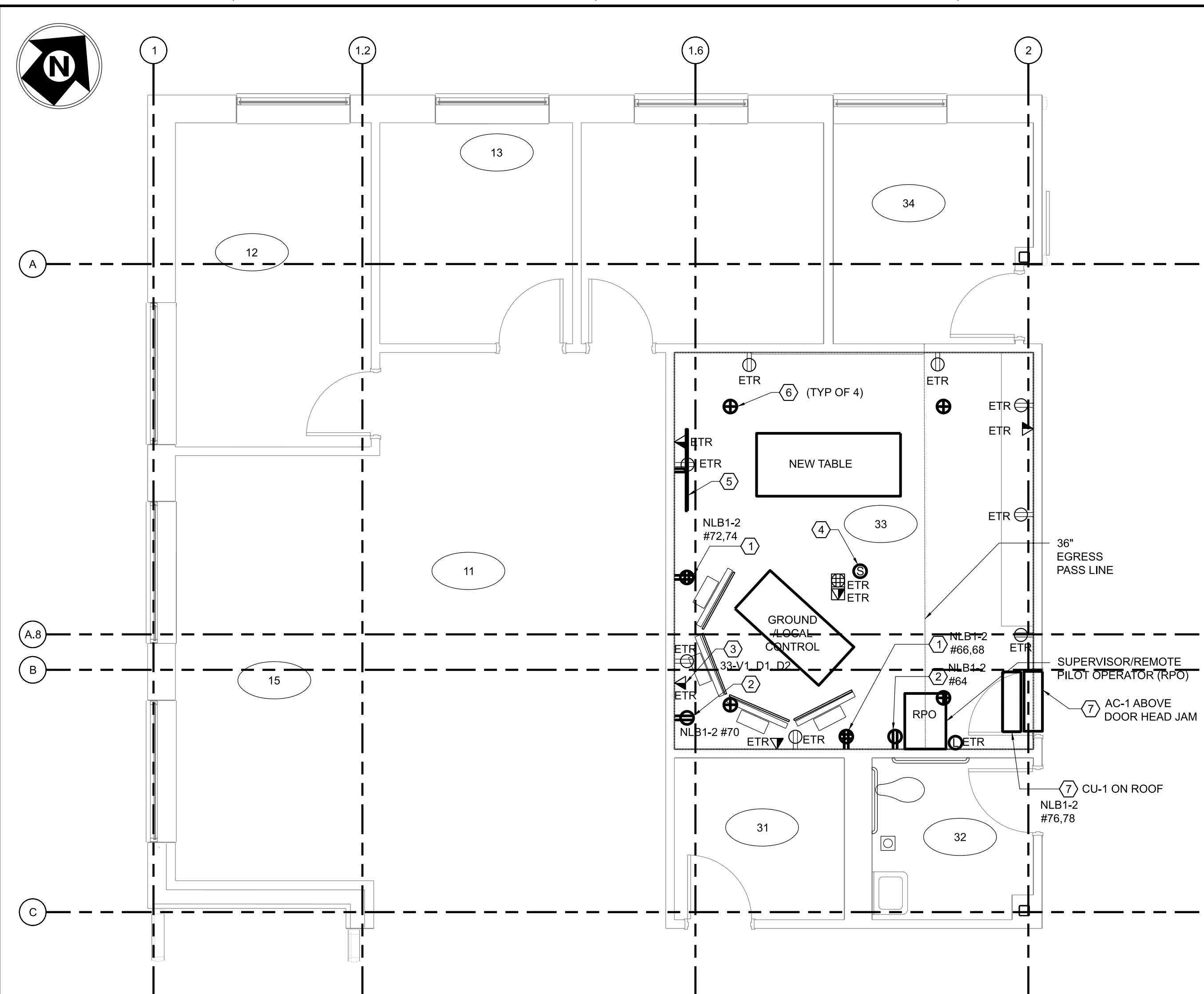
PARSONS
 PTSI Managed Services Inc.
 100 Walnut Street
 Pasadena, CA 91124
 202-651-2500

RELEASED FOR: WR 5-ANT-1008
 ISSUED FOR CONSTRUCTION - 05/08/2026

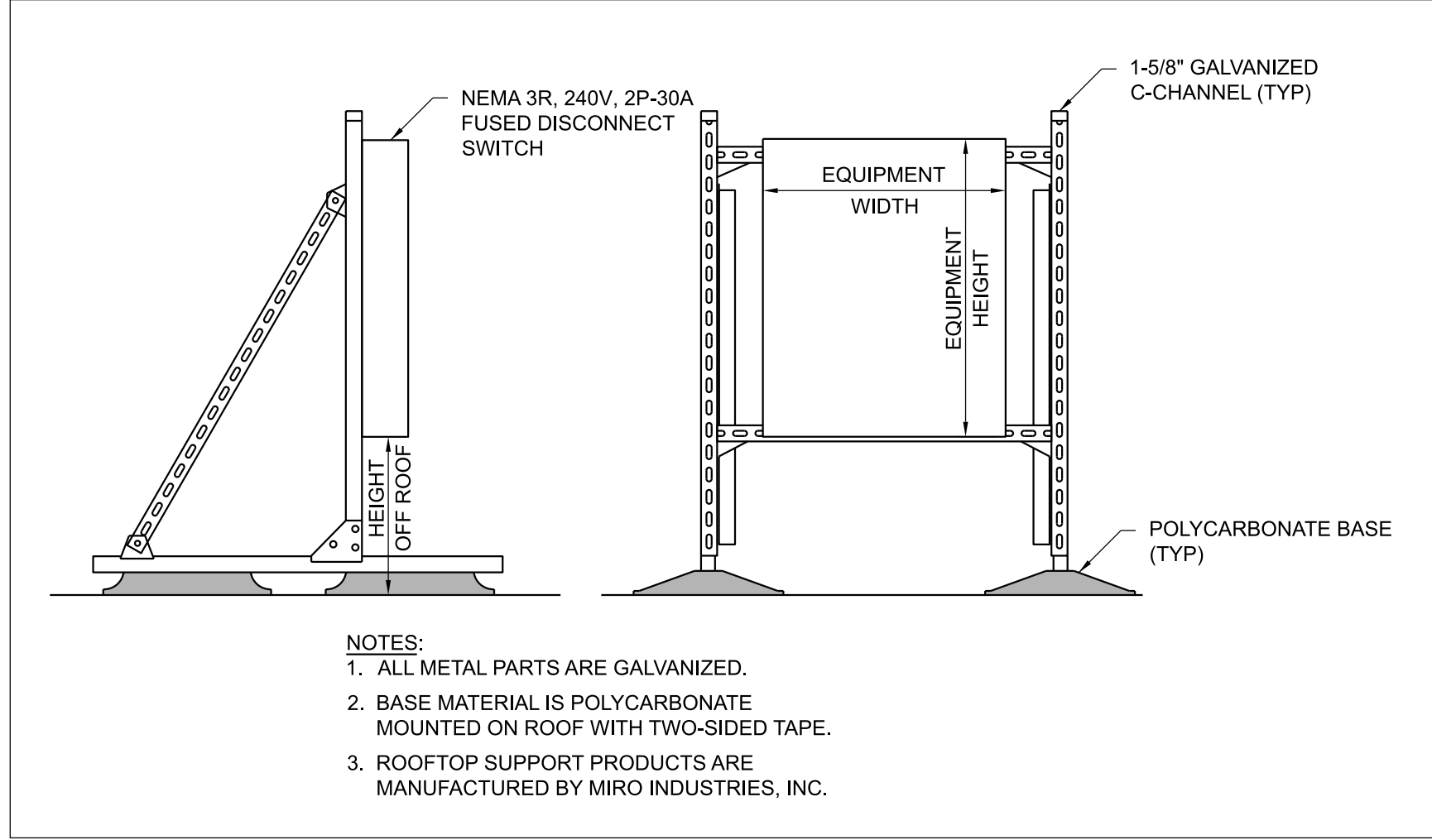
REV	APPROVED DATE	DESCRIPTION	JCN	REDLINE DATE	APVD
DEPARTMENT OF TRANSPORTATION FEDERAL AVIATION ADMINISTRATION ATO - TECHNICAL OPERATIONS EASTERN SERVICE AREA					
ATCT TOWER SIMULATION SYSTEM ELECTRICAL BASE BUILDING GROUND LEVEL LIGHTING PLAN					
WILKES-BARRE		WILKES-BARRE/SCRANTON INTL AIRPORT		PA	
REVIEWED BY	SUBMITTED BY	APPROVED BY			
	DO NOT SIGN	DO NOT SIGN	DO NOT SIGN		
PROJECT ENGINEER	DESIGNED	ISSUED BY	DATE	JCN	25014162
	JS	ENGINEERING SERVICES	05/08/2026		
DRAWN	EG	INFRASTRUCTURE	DRAWING NO	AVP-25014162-E002	
CHECKED	DW		REV		

RVP-25014162-E002.dwg
 05/08/2026 10:35:38 AM
 Plotted by: SRVC-CAL-EG-EDMS-COORD

ISSUED FOR AS-BUILT
 EDMS-RVP-25014162-E002.dwg



1 ATCT BASE BUILDING GROUND LEVEL POWER PLAN - NEW WORK
E003 SCALE: 1/8"=1'-0"



2 C-CHANNEL DETAIL FOR DISCONNECT SWITCH
E003 NOT TO SCALE

- NOTES:**
- REFER TO PANEL INFORMATION REQUIRED FOR NEW POWER CIRCUITS.
 - REFER TO LOCATIONS OF PANELS, DATA RACK AND FIRE ALARM CONTROL PANEL TO ROUTE CONDUITS AND CABLING TO THE PROJECTED AREA.
 - NEW CEILING HEIGHT WILL BE 9'-0" AFF.
 - THE HEIGHTS OF ALL NEW RECEPTACLES MUST BE MATCH EXISTING RECEPTACLE OR 12" AFF MIN. TO THE CENTERLINE OF RECEPTACLE.

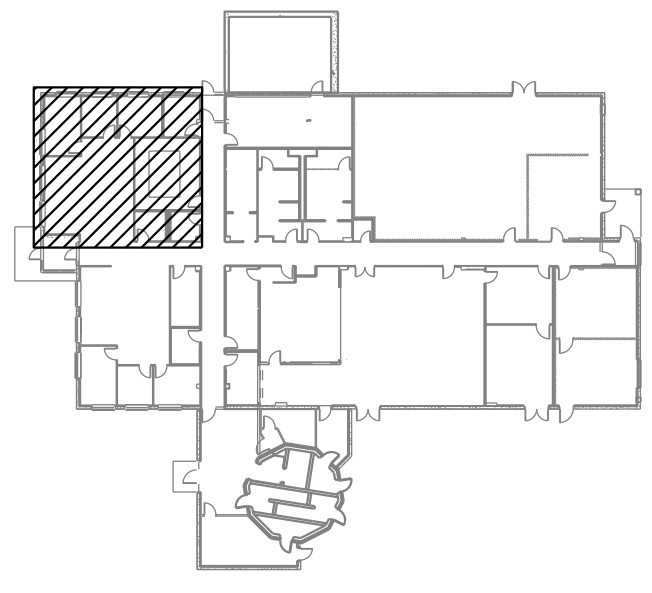
- KEY NOTES:**
- PROVIDE QUADRUPLEX RECEPTACLES AND CONNECT TO THE CIRCUITS AS INDICATED (TOTAL 2), ONE CIRCUIT FOR RIGHT DUPLEX AND THE OTHER FOR LEFT DUPLEX.
 - PROVIDE DUPLEX RECEPTACLES AND CONNECT TO THE CIRCUITS AS INDICATED (TOTAL 2).
 - UTILIZE EXISTING DATA/VOICE OUTLET (33-V1, D1, D2) TO SERVE NEW TSS EQUIPMENT.
 - REMOVE/REINSTALL CEILING MOUNTED SMOKE DETECTOR IN NEW GRID CEILING AND CONNECT TO EXISTING CABLE FOR NEW WORK REQUIREMENT (TOTAL 1).
 - REMOVE/REINSTALL WALL MOUNTED TV AND CONNECT TO EXISTING CIRCUIT FOR NEW WORK REQUIREMENT (TOTAL 1).
 - REMOVE/REINSTALL EXISTING SPRINKLER HEAD FOR NEW WORK REQUIREMENT (TOTAL 4). COORDINATE WITH MECHANICAL ENGINEER FOR ADDITIONAL INFORMATION.
 - PROVIDE NEMA 3R, 240V, 2P-30A FUSED DISCONNECT SWITCH FOR CU-1 (208V, 1φ, 12MCA, 20A MOCB) AND GALVANIZED STEEL C-TYPE CHANNEL TO SUPPORT DISCONNECT SWITCH. ROUTE CONDUIT AND ASSOCIATED WIRING TO PANEL AS INDICATED AND MAKE ALL FINAL CONNECTIONS AS REQUIRED. USE LFMC BETWEEN DISCONNECT SWITCH AND CU-1. PROVIDE (1) SET OF SPARE FUSES FOR MAINTENANCE. SEAL WITH SEALANT PROPERLY WHERE THE CONDUIT PENETRATION VIA ROOF. CHECK MECHANICAL DRAWING M002 FOR EXACT CU-1 LOCATION ON ROOF. AC-1 WILL BE FED FROM CU-1 VIA CONTROL WIRING. REFER TO C-CHANNEL DETAIL ON THIS DRAWING FOR ADDITIONAL INFORMATION.

- LEGEND:**
- DUPLEX RECEPTACLE
 - FLOOR MOUNTED QUAD RECEPTACLE
 - QUAD RECEPTACLE
 - FLOOR MOUNTED DATA/ VOICE OUTLET
 - DATA/ VOICE OUTLET
 - FA NOTIFICATION DEVICE
 - FA SMOKE DETECTOR
 - FA SPRINKLER HEAD

PANEL SCHEDULE: NLB1-2													
LOCATION: (#62)		MAIN: <input type="checkbox"/> LUGS ONLY <input type="checkbox"/> TOP		NUMBER OF CIRCUITS: 42				<input type="checkbox"/> NEW PANEL <input checked="" type="checkbox"/> EXISTING PANEL		ENCLOSURE: <input checked="" type="checkbox"/> NEMA 1 <input type="checkbox"/> NEMA 3R			
FEED FROM: NLB1-1 (FEED THRU LUGS)		<input type="checkbox"/> MAIN BKR <input checked="" type="checkbox"/> BOTTOM		BREAKERS: <input checked="" type="checkbox"/> BOLT-ON <input type="checkbox"/> PLUG-IN		MOUNTING: <input type="checkbox"/> FLUSH <input checked="" type="checkbox"/> SURFACE							
VOLTAGE: 208Y/120		BUS AMP RATING: 225A		SPECIAL: MLO		MANUFACTURER: SQUARE D							
WIRING: 3 PHASE, 4 WIRE		PANEL AIC RATING: 10KA		TYPE: NQ									
LN	LOAD TYPE	DESCRIPTION	LOAD (VA)	CKT NO	BKR	VA	BKR	CKT NO	LOAD (VA)	DESCRIPTION	LOAD TYPE	NOTE	
						A	B	C					
	SPARE		43	20/1		0			20/1	44	EF-8		
	RANGE HOOD		45	20/1		0			20/1	46	SPARE		
	DWSP-1		47	20/1					20/1	48	EF-1		
	R GLY COL FEED PUMP		49	20/1		0			20/1	50	R ELEVATOR RT		
	SPARE (MECH. RM)		51	20/1		0			20/1	52	EF-3		
	PROJECTION SCREEN		53	20/1					20/1	54	EF-4		
	SPARE		55	20/1		0			20/1	56	EF-2		
	SPARE		57	20/1		0			20/1	58	EF-5		
	TOWER LEVEL CUH-2S		59	20/1					20/1	60			
	SPARE		61	20/1		0			125/2	62	HAZ-MAT BUILDING		
			63			1200			20/1	64	1200	DUPLEX RECEPTACLE FOR TSS (RM 33)	RECP A
	EW+1		65	50/3			1200		20/1	66	1200	QUAD RECEPTACLE-RIGHT DUPLEX FOR TSS (RM 33)	RECP A,C
			67			1200			20/1	68	1200	QUAD RECEPTACLE-LEFT DUPLEX FOR TSS (RM 33)	RECP A,C
			69				1200		20/1	70	1200	DUPLEX RECEPTACLE FOR TSS (RM 33)	RECP A
	CBP-2 (5HP)		71	35/3					20/1	72	1200	QUAD RECEPTACLE-RIGHT DUPLEX FOR TSS (RM 33)	RECP A,C
			73						20/1	74	1200	QUAD RECEPTACLE-LEFT DUPLEX FOR TSS (RM 33)	RECP A,C
	SPARE		75	20/1					20/2	76	1440	CU-1 (ROOF)	MOTR B
	SPARE		77	20/1					20/1	78	1440		
	CALIBRATION VAV		79	40/2					20/1	80		SPARE	
			81						20/1	82		SPARE	
	SPACE		83						20/1	84		SPARE	
TOTAL CONNECTED LOAD (KVA)			1.2	2.4	1.2								
TOTAL AMPS			3.33	6.66	3.33								
TOTAL CONNECTED LOAD (KVA)			0	7.2	1.44								
DEMAND LOAD (KVA)			0	7.2	1.44								

PANEL NOTES:

- PROVIDE CIRCUIT BREAKER AS SHOWN AND 3/4" C. W/2#10+1#10 GND TO SERVE THE DESIGNATED LOAD.
- PROVIDE CIRCUIT BREAKER AS SHOWN AND 3/4" C. W/2#10+1#10 GND TO SERVE THE DESIGNATED CU-1.
- QUAD RECEPTACLES ARE REQUIRED DUAL-CIRCUITS ONE FOR RIGHT DUPLEX AND THE OTHER FOR LEFT.



KEY PLAN
SCALE: 1/8" = 1'-0"

PARSONS
PTSI Managed Services Inc.
100 Walnut Street
Pasadena, CA 91124
202-651-2500

RELEASED FOR: WR 5-ANT-1008
ISSUED FOR CONSTRUCTION - 05/08/2026

REV	APPROVED DATE	DESCRIPTION	JCN	REDLINE DATE	APVD
DEPARTMENT OF TRANSPORTATION FEDERAL AVIATION ADMINISTRATION ATCT - TECHNICAL OPERATIONS EASTERN SERVICE AREA					
ATCT TOWER SIMULATION SYSTEM ELECTRICAL BASE BUILDING GROUND LEVEL POWER PLAN					
WILKES-BARRE		WILKES-BARRE/SCRANTON INTL AIRPORT		PA	
REVIEWED BY	SUBMITTED BY	APPROVED BY			
	DO NOT SIGN	DO NOT SIGN			
PROJECT ENGINEER	ISSUED BY	DATE	MGR: ENGINEERING - CENTER A		
DESIGNED JS	ISSUED BY	DATE 05/08/2026	JCN	25014162	
DRAWN JG	ENGINEERING SERVICES	DRAWING NO	AVP-25014162-E003		
CHECKED DW	INFRASTRUCTURE	REV			

8/19/2025 11:42:40 AM
 03/02/2026
 Printed by: SRVC-CAL-EG-EDMS-COORD

ISSUED FOR CONSTRUCTION
 EDMS: 8/19/2025 11:42:40 AM