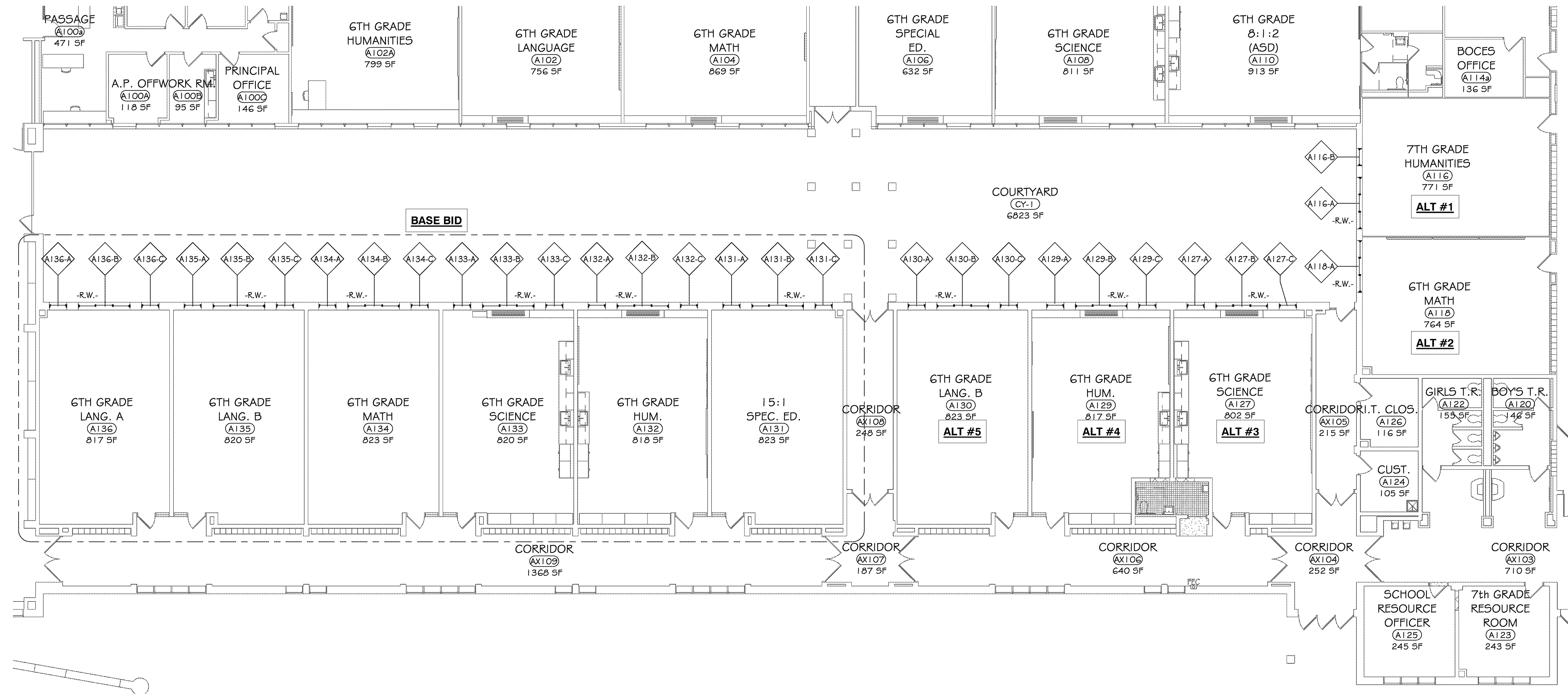


4 SECOND FLOOR PLAN - AREA I
 3/32" = 1'-0"



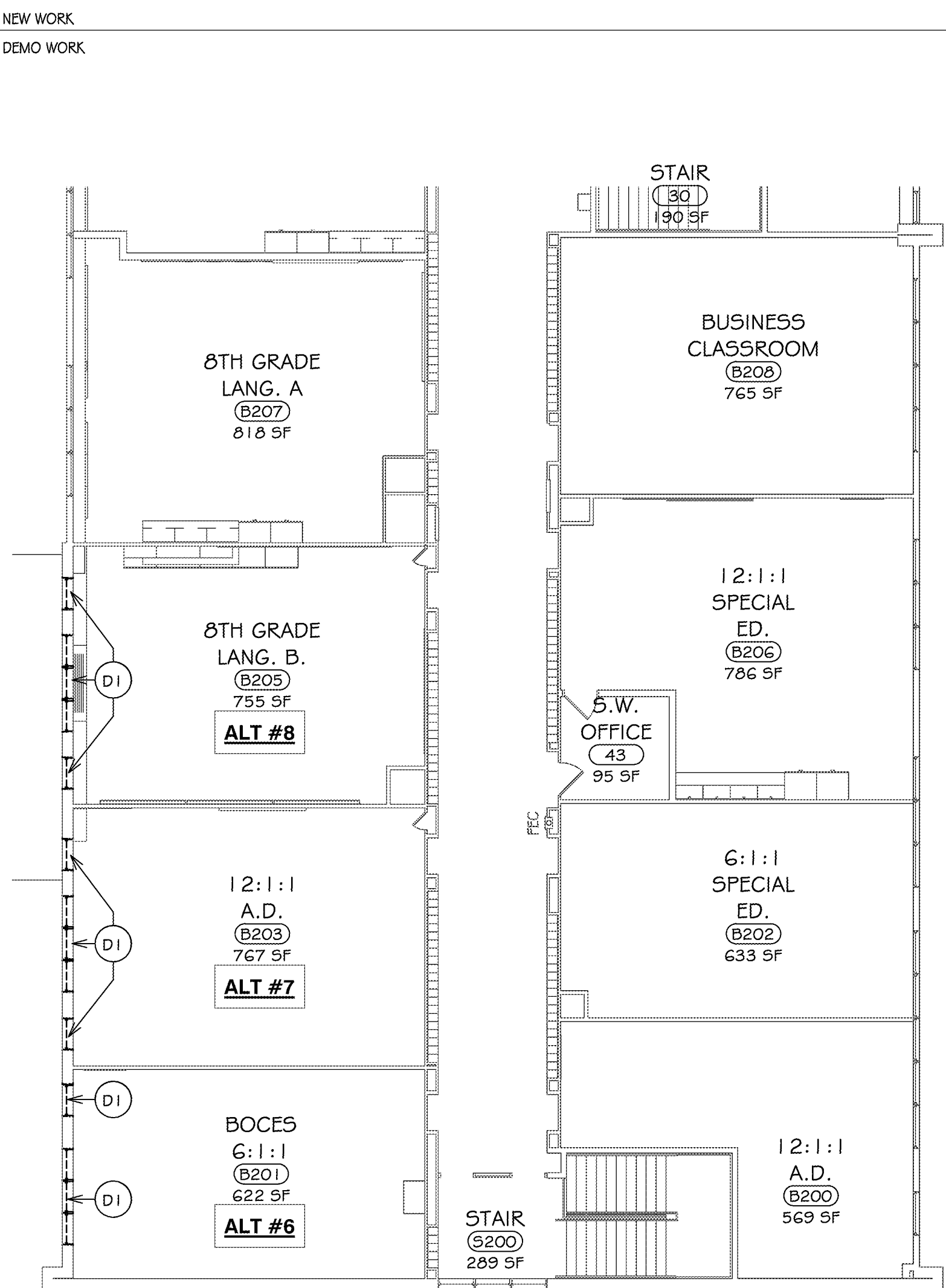
2 FIRST FLOOR PLAN - AREA A
 3/32" = 1'-0"

GENERAL NOTES:

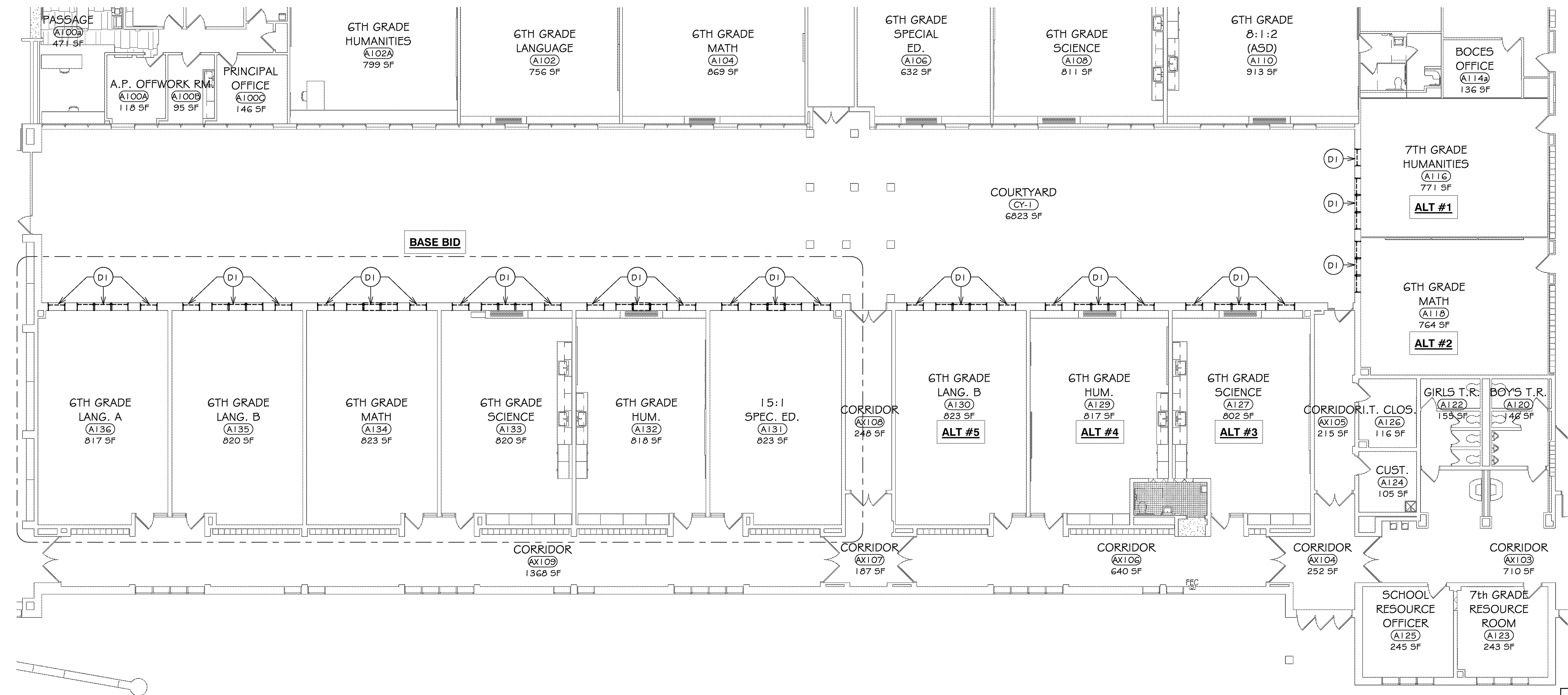
- A FILL ALL VOIDS AND IMPERFECTIONS IN WALLS AND FLOORS CREATED BY DEMOLITION. PATCH TO MATCH EXISTING & PREPARE TO RECEIVE NEW FINISHES.
- B ITEMS SHOWN ARE INTENDED TO GIVE APPROXIMATE QUANTITY, LOCATION & TYPE. THE CONTRACTOR IS RESPONSIBLE FOR VERIFYING ACTUAL QUANTITY & EXISTING FIELD CONDITIONS.
- C ALL DIMENSIONS ARE TAKEN FROM FACE OF WALL TO FACE OF WALL UNLESS NOTED OTHERWISE.
- D REINSTALLATION WINDOW TREATMENTS SALVAGED DURING DEMOLITION.
- E CONTRACTOR TO PROVIDE RESCUE WINDOW LABELS AT ALL NEW WINDOW LOCATION INDICATED ON DRAWING.

GRAPHIC KEY

-R.W.- RESCUE WINDOW + LABEL



3 SECOND FLOOR DEMOLITION PLAN - AREA I
 3/32" = 1'-0"



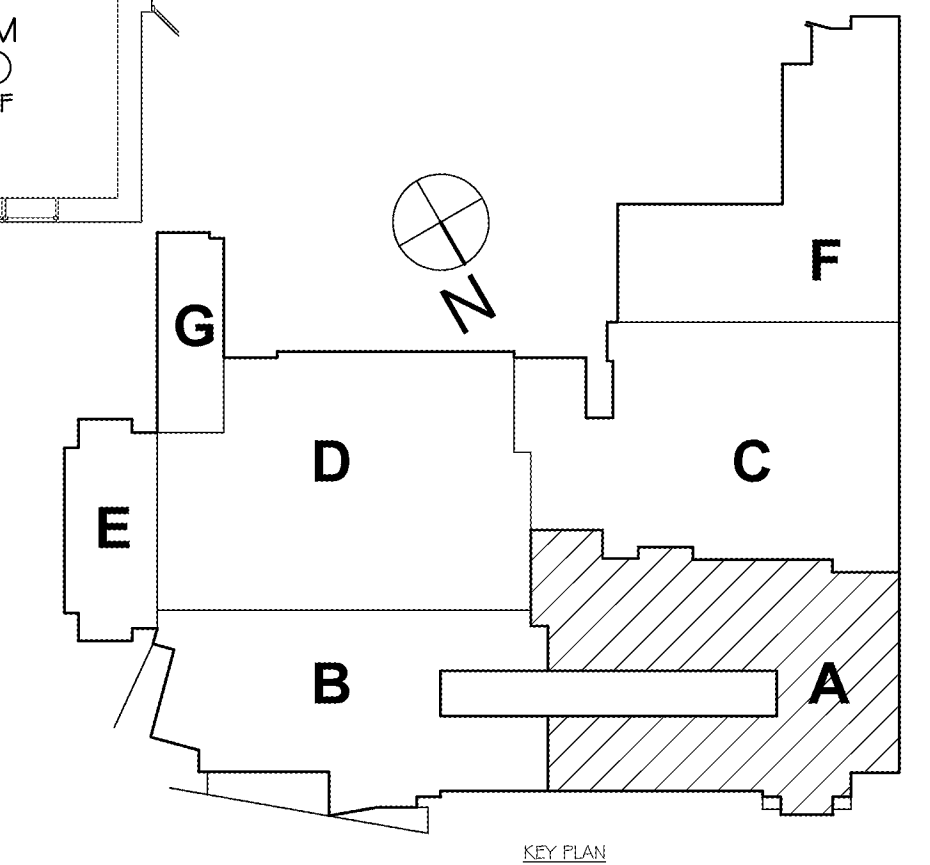
1 FIRST FLOOR DEMOLITION PLAN - AREA A
 3/32" = 1'-0"

GENERAL DEMO NOTES:

- A CONTRACTOR TO PROVIDE PROTECTIVE BARRIER AT ALL AREAS DURING SCHOOL OPERATIONS.
- B THE OWNER RESERVES THE RIGHT TO RETAIN ANY REMOVED ITEMS AFTER CONTRACTOR REMOVAL. THE CONTRACTOR SHALL REMOVE FROM THE SITE AND DISPOSE OF ALL REMOVED ITEMS THE OWNER DOES NOT WISH TO RETAIN.
- C PATCH, REPAIR, PAINT OR RE-FINISH EXG. CONSTRUCTION MATERIALS AND FINISHES DAMAGED DURING DEMOLITION OR NEW CONSTRUCTION.
- D DIMENSIONS SHOWN FOR ALL NEW OPENINGS IN EXISTING CONSTRUCTION SHOULD BE COORDINATED WITH THE NEW PLANS AND EXISTING CONDITIONS IN THE FIELD.
- E ITEMS SHOWN ARE INTENDED TO GIVE APPROXIMATE QUANTITY, LOCATION AND TYPE. CONTRACTOR IS RESPONSIBLE FOR VERIFYING ACTUAL QUANTITIES AND EXISTING FIELD CONDITIONS, IN ORDER TO COMPLETE NEW WORK.
- F AT LOCATIONS OF WINDOW DEMOLITION, THE CONTRACTOR IS TO SALVAGE AN STORE WINDOW TREATMENTS FOR REINSTALLATION.

DEMOLITION KEY NOTES:

- D1 REMOVE EXISTING WINDOW, FRAME, AND HARDWARE IN THEIR ENTIRETY. PREPARE FOR NEW WINDOW INSTALL. EXISTING INTERIOR AND EXTERIOR SILL TO REMAIN. REPAIR DAMAGED SURFACES

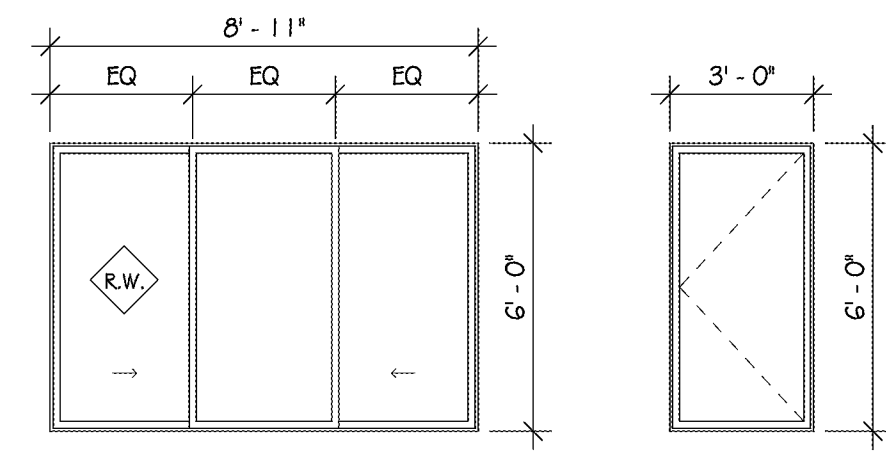


DRAWN BY:	9PF
CHECKED BY:	MLS
DATE:	03/09/2020
SCALE:	As indicated
BY:	
DESCRIPTION OF REVISION:	
1	9/9/2020
2	

HUNT ENGINEERS | ARCHITECTS | SURVEYORS
 101 HUNT CENTER HORSEHEADS, N.Y. 14845 807-358-1000 FAX 358-1800 ROCHESTER, NY TOWANDA, PA

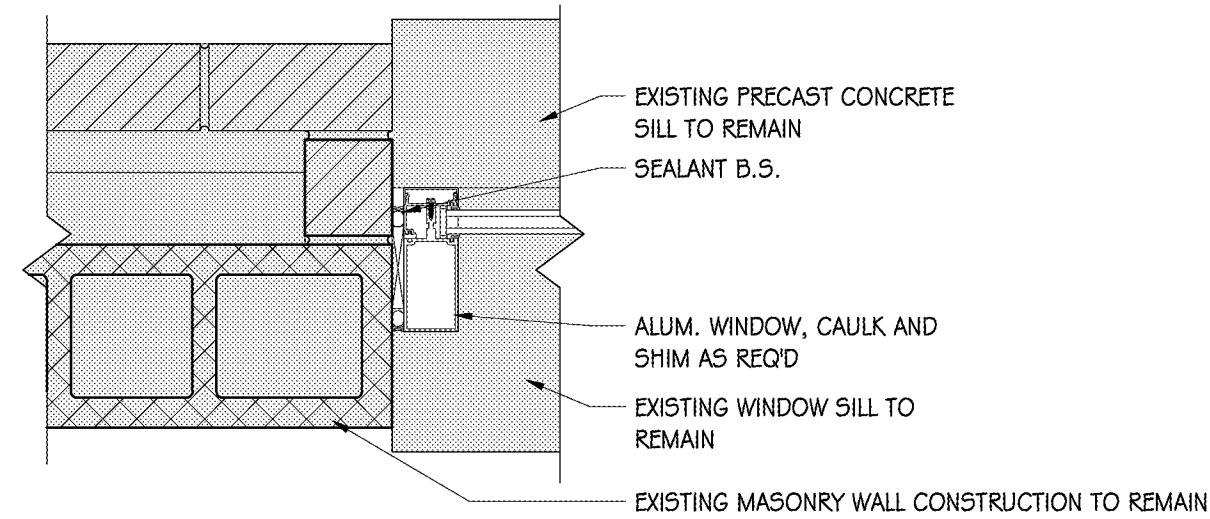
PARITAL FLOOR PLANS
 2020 CAPITAL OUTLAY PROJECT
 CORNING-PAINTED POST AREA SCHOOL DISTRICT
 35 VICTORY HIGHWAY, PAINTED POST, NY 14870
 PROJECT NO: 2649-121
A1.1

#	LOCATION	WIDTH	HEIGHT	WINDOW TYPE	MATERIAL	FINISH	GLAZING	HEAD	DETAIL			NOTES
									JAMB	SILL		
A116-A	7TH GRADE HUMANITIES	8'-11"	6'-0"	2	ALUM.	PAINTED	IG-A	3/A1.2	2/A1.2	1/A1.2	ALTERNATE # 1	
A116-B	7TH GRADE HUMANITIES	3'-0"	6'-0"	1	ALUM.	PAINTED	IG-A	3/A1.2	2/A1.2	1/A1.2	ALTERNATE # 1	
A118-A	6TH GRADE MATH	8'-11"	6'-0"	2	ALUM.	PAINTED	IG-A	3/A1.2	2/A1.2	1/A1.2	ALTERNATE # 2	
A127-A	6TH GRADE SCIENCE	3'-0"	6'-0"	1	ALUM.	PAINTED	IG-A	3/A1.2	2/A1.2	1/A1.2	ALTERNATE # 3	
A127-B	6TH GRADE SCIENCE	8'-11"	6'-0"	2	ALUM.	PAINTED	IG-A	3/A1.2	2/A1.2	1/A1.2	ALTERNATE # 3	
A127-C	6TH GRADE SCIENCE	3'-0"	6'-0"	1	ALUM.	PAINTED	IG-A	3/A1.2	2/A1.2	1/A1.2	ALTERNATE # 3	
A129-A	6TH GRADE HUM.	3'-0"	6'-0"	1	ALUM.	PAINTED	IG-A	3/A1.2	2/A1.2	1/A1.2	ALTERNATE # 4	
A129-B	6TH GRADE HUM.	8'-11"	6'-0"	2	ALUM.	PAINTED	IG-A	3/A1.2	2/A1.2	1/A1.2	ALTERNATE # 4	
A129-C	6TH GRADE HUM.	3'-0"	6'-0"	1	ALUM.	PAINTED	IG-A	3/A1.2	2/A1.2	1/A1.2	ALTERNATE # 4	
A130-A	6TH GRADE LANG. B	3'-0"	6'-0"	1	ALUM.	PAINTED	IG-A	3/A1.2	2/A1.2	1/A1.2	ALTERNATE # 4	
A130-B	6TH GRADE LANG. B	8'-11"	6'-0"	2	ALUM.	PAINTED	IG-A	3/A1.2	2/A1.2	1/A1.2	ALTERNATE # 5	
A130-C	6TH GRADE LANG. B	3'-0"	6'-0"	1	ALUM.	PAINTED	IG-A	3/A1.2	2/A1.2	1/A1.2	ALTERNATE # 5	
A131-A	15:1 SPEC. ED.	3'-0"	6'-0"	1	ALUM.	PAINTED	IG-A	3/A1.2	2/A1.2	1/A1.2		
A131-B	15:1 SPEC. ED.	8'-11"	6'-0"	2	ALUM.	PAINTED	IG-A	3/A1.2	2/A1.2	1/A1.2		
A131-C	15:1 SPEC. ED.	3'-0"	6'-0"	1	ALUM.	PAINTED	IG-A	3/A1.2	2/A1.2	1/A1.2		
A132-A	6TH GRADE HUM.	3'-0"	6'-0"	1	ALUM.	PAINTED	IG-A	3/A1.2	2/A1.2	1/A1.2		
A132-B	6TH GRADE HUM.	8'-11"	6'-0"	2	ALUM.	PAINTED	IG-A	3/A1.2	2/A1.2	1/A1.2		
A132-C	6TH GRADE HUM.	3'-0"	6'-0"	1	ALUM.	PAINTED	IG-A	3/A1.2	2/A1.2	1/A1.2		
A133-A	6TH GRADE SCIENCE	3'-0"	6'-0"	1	ALUM.	PAINTED	IG-A	3/A1.2	2/A1.2	1/A1.2		
A133-B	6TH GRADE SCIENCE	8'-11"	6'-0"	2	ALUM.	PAINTED	IG-A	3/A1.2	2/A1.2	1/A1.2		
A133-C	6TH GRADE SCIENCE	3'-0"	6'-0"	1	ALUM.	PAINTED	IG-A	3/A1.2	2/A1.2	1/A1.2		
A134-A	6TH GRADE MATH	3'-0"	6'-0"	1	ALUM.	PAINTED	IG-A	3/A1.2	2/A1.2	1/A1.2		
A134-B	6TH GRADE MATH	8'-11"	6'-0"	2	ALUM.	PAINTED	IG-A	3/A1.2	2/A1.2	1/A1.2		
A134-C	6TH GRADE MATH	3'-0"	6'-0"	1	ALUM.	PAINTED	IG-A	3/A1.2	2/A1.2	1/A1.2		
A135-A	6TH GRADE LANG. B	3'-0"	6'-0"	1	ALUM.	PAINTED	IG-A	3/A1.2	2/A1.2	1/A1.2		
A135-B	6TH GRADE LANG. B	8'-11"	6'-0"	2	ALUM.	PAINTED	IG-A	3/A1.2	2/A1.2	1/A1.2		
A135-C	6TH GRADE LANG. B	3'-0"	6'-0"	1	ALUM.	PAINTED	IG-A	3/A1.2	2/A1.2	1/A1.2		
A136-A	6TH GRADE LANG. A	3'-0"	6'-0"	1	ALUM.	PAINTED	IG-A	3/A1.2	2/A1.2	1/A1.2		
A136-B	6TH GRADE LANG. A	8'-11"	6'-0"	2	ALUM.	PAINTED	IG-A	3/A1.2	2/A1.2	1/A1.2		
A136-C	6TH GRADE LANG. A	3'-0"	6'-0"	1	ALUM.	PAINTED	IG-A	3/A1.2	2/A1.2	1/A1.2		
B201-A	BOCES 6:1:1	8'-11"	6'-0"	2	ALUM.	PAINTED	IG-A	3/A1.2	2/A1.2	1/A1.2	ALTERNATE # 6	
B201-B	BOCES 6:1:1	3'-0"	6'-0"	1	ALUM.	PAINTED	IG-A	3/A1.2	2/A1.2	1/A1.2	ALTERNATE # 6	
B203-A	12:1:1 A.D.	3'-0"	6'-0"	1	ALUM.	PAINTED	IG-A	3/A1.2	2/A1.2	1/A1.2	ALTERNATE # 7	
B203-B	12:1:1 A.D.	8'-11"	6'-0"	2	ALUM.	PAINTED	IG-A	3/A1.2	2/A1.2	1/A1.2	ALTERNATE # 7	
B203-C	12:1:1 A.D.	3'-0"	6'-0"	1	ALUM.	PAINTED	IG-A	3/A1.2	2/A1.2	1/A1.2	ALTERNATE # 7	
B205-A	6TH GRADE LANG. B	3'-0"	6'-0"	1	ALUM.	PAINTED	IG-A	3/A1.2	2/A1.2	1/A1.2	ALTERNATE # 8	
B205-B	6TH GRADE LANG. B	8'-11"	6'-0"	2	ALUM.	PAINTED	IG-A	3/A1.2	2/A1.2	1/A1.2	ALTERNATE # 8	
B205-C	6TH GRADE LANG. B	3'-0"	6'-0"	1	ALUM.	PAINTED	IG-A	3/A1.2	2/A1.2	1/A1.2	ALTERNATE # 8	

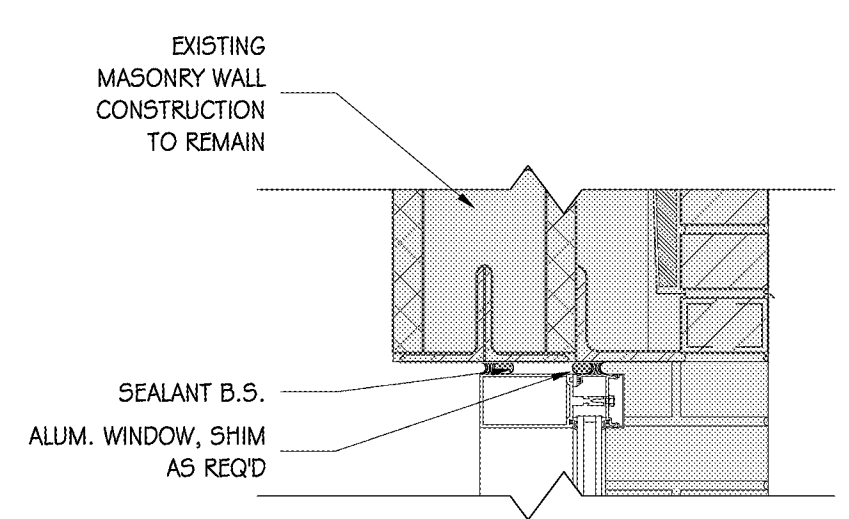


NOTES:
 A. WINDOW ELEVATIONS AS VIEWED FROM EXTERIOR
 B. REFER TO A1.1 FOR LOCATION OF RESCUE WINDOW LABELS
 C. CONTRACTOR TO VIF ALL WINDOW SIZES PRIOR TO ORDERING

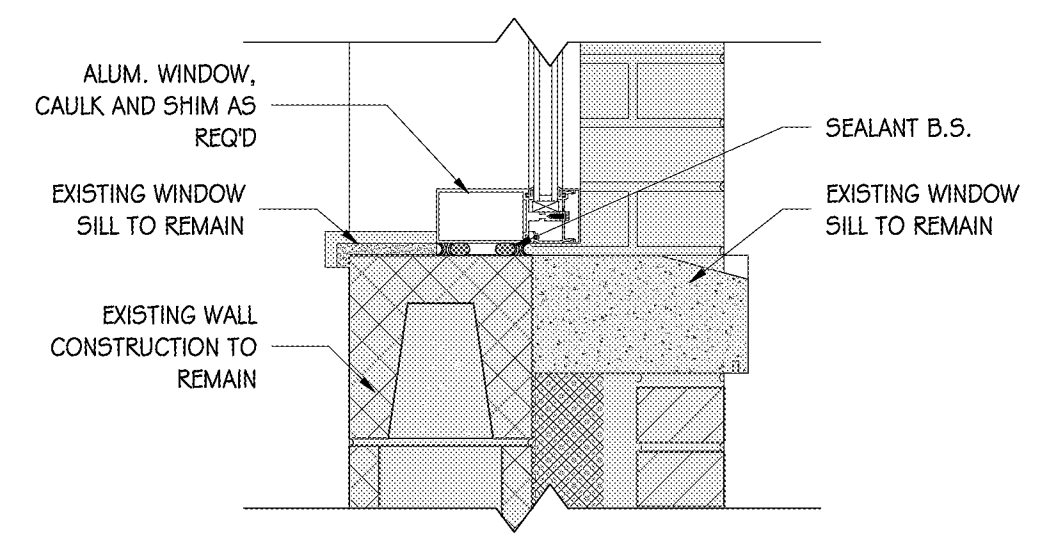
WINDOW TYPES
 1/4" = 1'-0"



2 WINDOW JAMB DETAIL - A
 1 1/2" = 1'-0"



3 WINDOW HEAD DETAIL - A
 1 1/2" = 1'-0"



1 WINDOW SILL DETAIL - A
 1 1/2" = 1'-0"