

ADDENDUM NO. 1

September 11, 2023

This Addendum contains changes to the requirements of the Contract Documents and Specifications. Such changes are to be incorporated into the Construction Documents and shall apply to the work with the same meaning and force as if they had been included in the original document. Wherever this Addendum modifies a portion of a paragraph of the specifications or a portion of any Drawing, the remainder of the Paragraph or Drawing shall remain in force.

NOTE: Provisions of all Contract Documents apply.

- Item 1. **ADD** Specification Section 098400 – ACOUSTICAL PANELS, attached.

- Item 2. Drawing A-600 – FINISH SCHEDULE, PARTITION TYPES & MISC. DETAILS
DELETE in its entirety
REPLACE with revised Drawing A-600R, attached.

- Item 3. Pre-bid Sign-in Sheet is attached for Contractors' reference only.

- Item 4. RFI Questions and Clarifications
See attached RFI Log (Items 1 - 6)

Attachments: Section 098400
Drawing A-600R
Pre-bid Sign-in Sheet
RFI Log (Items 1 - 6)

******END OF ADDENDUM******

SECTION 098400

ACOUSTICAL PANELS

PART 1 - GENERAL

1.1 SUMMARY

A. Section includes:

1. Fabric wrapped acoustical panel with high density core.

B. Furnish and install all sound-absorptive wall products and associated installation accessories as shown on the drawings, and specified herein, or as required to complete the work.

C. Related Documents: This section applies to drawings and general provisions of the subcontract. Review these documents for coordination with additional requirements and information that apply to work under this Section. Cross-reference approved supplementary manufacturers' sound-absorptive Sheets and required installation accessories including, but not limited to construction-grade adhesive, or other mechanical fasters by others as applicable.

1.2 REFERENCES

A. American Society for Testing and Materials (ASTM) International:

1. ASTM C423 Standard Test Method for Sound Absorption and Sound Absorption Coefficients by the Reverberation Room Method.
2. ASTM E84 Standard Test Method for Surface Burning Characteristics of Building Materials.
3. ASTM E795 Standard Practices for Mounting Test Specimens During Sound Absorption Tests.

1.3 SYSTEM DESCRIPTION

A. Performance Requirements

1. Provide sound absorptive wall system designed and tested to provide a Class A flame spread rating when tested in accordance with ASTM E84, unless otherwise specified.
 - a. Flamespread: 25 maximum.
 - b. Smoke Developed: 50 maximum.

2. Provide sound absorptive panel which has been manufactured, fabricated and installed to provide Noise Reduction Coefficient (NRC) rating in accordance with ASTM C423-09a:
 - a. ACOUSTICAL SOLUTIONS Acoustical Sheets. NRC (Noise Reduction Coefficient): Comply with ASTM C42390a up to 1.10 depending on thickness. See specific products for ratings.

1.4 SUBMITTALS

- A. Product Data: Manufacturer's technical data for acoustical foam sheets including fire-resistive characteristics, finishes, details of installation, and the following:
 2. Manufacturer's installation instructions.
 3. Certified test reports indicating compliance with Performance Requirements specified herein.
- B. Samples: One (1) 12" inch by 12" inch (305mm x 305mm) sample of desired thickness of the following specified units for all selected colors for selection or verification.
- C. Shop Drawings: Layout and details of acoustical foam sheets. Show locations of items which are to be coordinated with or supported by the structural ceiling or walls.
- D. Closeout Submittals:
 1. Operating and Maintenance Manual, including cleaning and maintenance instructions.
 2. Extra Material for Owner's stock.
 3. Safety Data Sheets (SDS).

1.5 QUALITY ASSURANCE

- A. Single-Source Responsibility: ACOUSTICAL SOLUTIONS to provide Alphasorb® Quick Ship Acoustical Panel or equal pending approval by the Architect.
- B. Installer Qualifications: Acceptable to the manufacturer of the product being installed. Utilize an installer having demonstrated 5 years minimum experience on projects of similar size and acoustical complexity.
- C. Mock-Up: Provide a mock-up for evaluation of installed appearance.
 1. Install acoustical foam sheets in areas designated by the architect in coordination with the slotted metal framing mock-up.
 2. Do not proceed with remaining work until proper authority approves workmanship and appearance.
 3. Approved mock-up may remain as part of the work.

- D. Surface Burning Characteristics

1. Tested in accordance to ASTM E84
2. Fire Class A
 - a. Flame Spread Index <25
 - b. Smoke Developed Index <50

1.6 Delivery, Storage, and Handling

- A. Delivery: Deliver material in the manufacturer's original, unopened, undamaged containers with identification labels intact.
- B. Provide labels indicating ACOUSTICAL SOLUTIONS brand name, style, size and thickness.
- C. Storage and Protection: Comply with manufacturer's recommendations. Store acoustical product indoors and protected from exposure to harmful environmental conditions and at temperature and humidity conditions recommended by the manufacturer.

1.7 Project Conditions

- A. Environmental Limitations
 1. Install AlphaSorb® panel only in conditions that are within the manufacturer's published limits for temperature and humidity.
 2. Areas receiving sheets should be free of construction debris and dust.
 3. Mechanical, sprinkler and electrical trades shall have completed their work above the ceiling structure and within structural walls prior to commencement of product installation.

1.8 Maintenance

- A. Extra Materials: Provide a minimum of 1 box or 2%, whichever is larger, of additional materials if required for use by owner or the building maintenance and repair.
- B. Provide new unopened cartons of extra materials, packaged with protective covering for storage and identified with appropriate labels.

PART 2 – PRODUCTS

2.1 MANUFACTURER

A. ACOUSTICAL SOLUTIONS

1. 2420 Grenoble Road, Richmond, VA 2329 | PH: 800-782-5742 | AcousticalSolutions.com

2.2 MATERIALS

- A. ACOUSTICAL SOLUTIONS Alphasorb Quick Ship Acoustical Panel
 - 1. Fire Resistance: ASTM E84, Class A
 - 2. ACOUSTICAL SOLUTIONS Acoustical Panel
 - a. NRC: 1.10 per ASTM C423 Type A mounting at 2" inches thick
 - 4. Service Temperature: -40°F to 350°F
 - 5. Size: Nominal: 24 inches x 48 inches (607 mm x 1220 mm).
 - 6. Sheet Thickness: 2" inches (51mm).
 - 7. Manufacturers Standard Textiles/Colors: Submit full range of available colors for selection by Architect
- B. Product Substitutions: equal product pending approval by the Architect.

PART 3 - EXECUTION

3.1 EXAMINATION

- A. Examine sheet installation, with installer present, for compliance with requirements specified in this and other applicable Sections affecting product installation and with requirements for installation tolerances and other conditions affecting performance of the selected ACOUSTICAL SOLUTIONS product.

3.2 INSTALLATION

- A. Do not begin installation until materials sufficient to complete an entire room are received and prepared for installation.
- B. Symmetrically locate product layout, as desired, in each space. Coordinate work with other trades so that lighting fixtures, HVAC and other ceiling and/or wall mounted fixtures work with panel of baffle layout.
- C. Install materials in accordance with manufacturer's printed instructions and to comply with governing regulations, fire resistance rating requirements as indicated and industry standards applicable to the work.
- D. Take care not to damage or mark the product; wear clean cotton or canvas gloves and avoid the use of latex gloves.

3.2 CLEANING

- A. Clean exposed surfaces of acoustical product and any installation accessories to comply with manufacturer's instructions for cleaning.
- B. Touch up any minor finish damage.
- C. Remove and replace work that cannot be successfully cleaned and repaired to permanently eliminate evidence of damage.

3.3 PROTECTION

- A. Protect installed products until completion of project.

END OF SECTION

Revisions:

100% Construction Documents 08/07/2023
Addendum No. 1 09/11/2023

Key Plan:

Seal:



A-600R

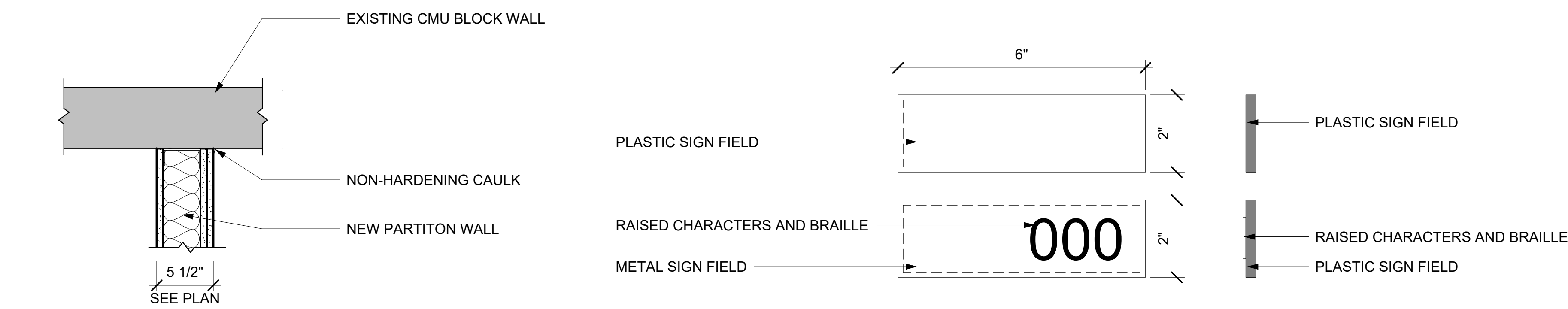
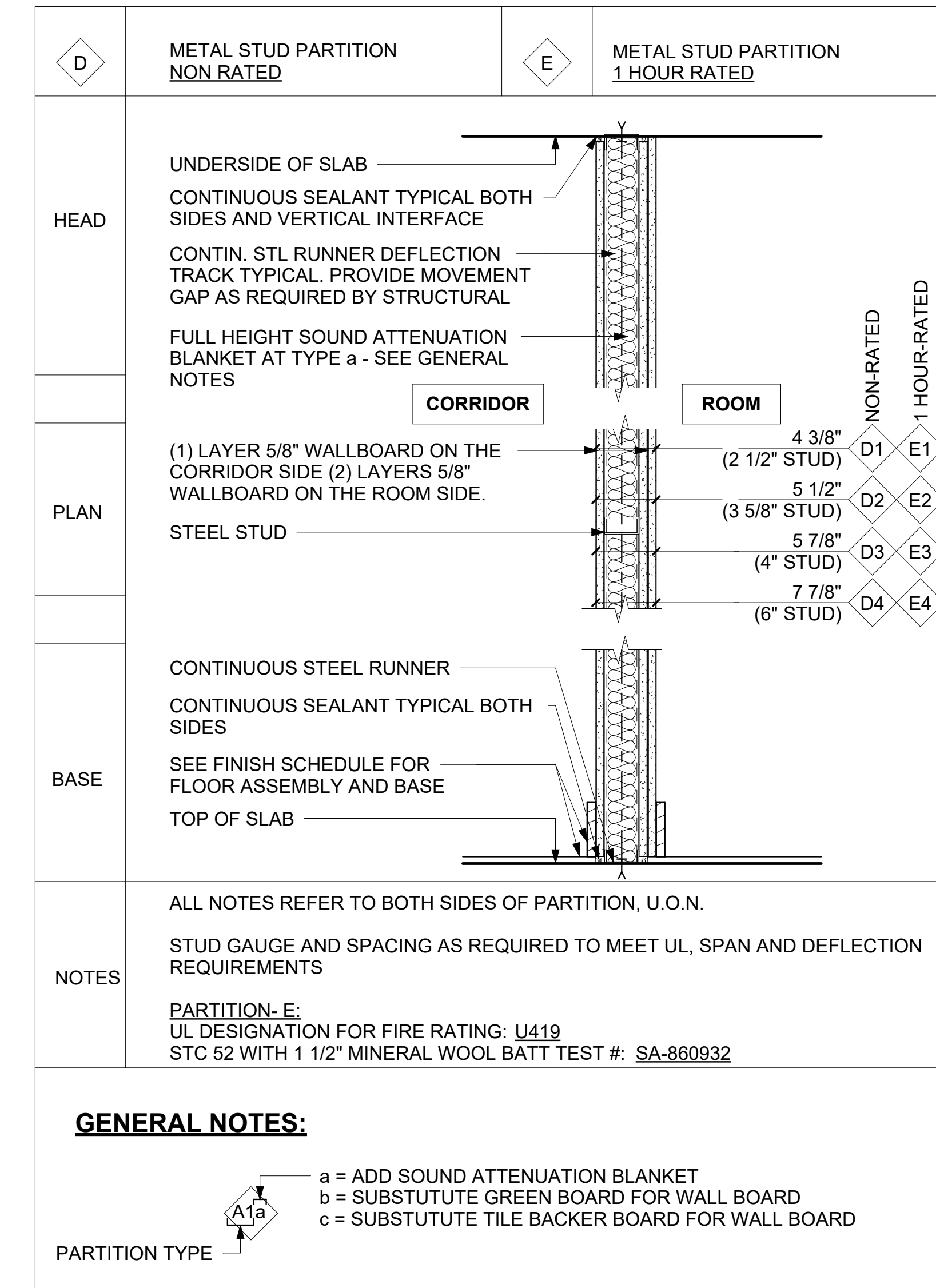
FINISH SCHEDULE, PARTITION TYPES & MISC. DETAILS

Scale: As indicated
August 7, 2023

Olin Hall 2nd Floor Office Renovations

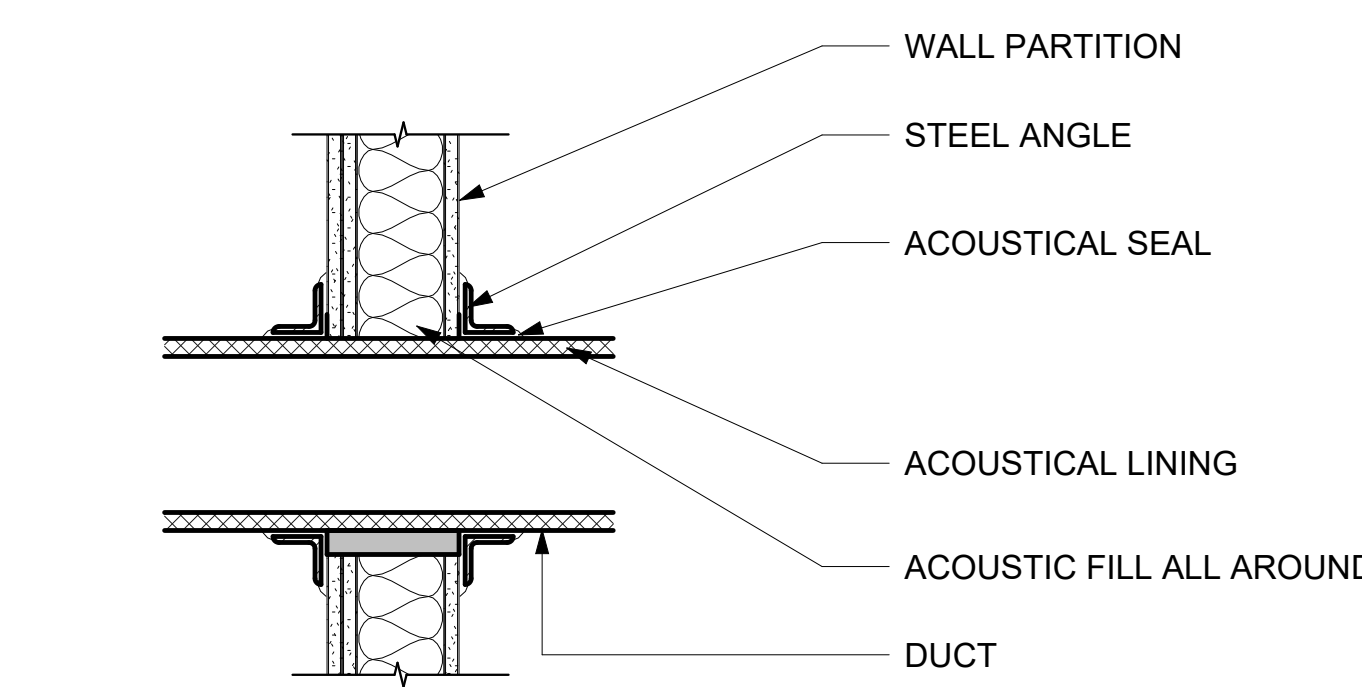
FINISH SCHEDULE									
ROOM NO.	ROOM NAME	FLOOR FINISH	BASE FINISH	WALL FINISH				CEILING FINISH	COMMENTS
				EAST	SOUTH	WEST	NORTH		
244	OFFICE	CPT-1	BS-1, P-3	P-1	P-1, AP-1	P-1	P-1, AP-1	P-2	
244A	OFFICE	CPT-1	BS-1, P-3	P-1	P-1, AP-1	P-1	P-1, AP-1	P-2	
246	OFFICE	CPT-1	BS-1, P-3	P-1	P-1, AP-1	P-1	P-1, AP-1	P-2	
246A	OFFICE	CPT-1	BS-1, P-3	P-1	P-1, AP-1	P-1	P-1, AP-1	P-2	
248	OFFICE	CPT-1	BS-1, P-3	P-1	P-1, AP-1	P-1	P-1, AP-1	P-2	
248A	OFFICE	CPT-1	BS-1, P-3	P-1	P-1, AP-1	P-1	P-1, AP-1	P-2	
250	OFFICE	CPT-1	BS-1, P-3	P-1	P-1, AP-1	P-1	P-1, AP-1	P-2	
250A	OFFICE	CPT-1	BS-1, P-3	P-1	P-1, AP-1	P-1	P-1, AP-1	P-2	
254	OFFICE	CPT-1	BS-1, P-3	P-1	P-1, AP-1	P-1	P-1, AP-1	P-2	
254A	OFFICE	CPT-1	BS-1, P-3	P-1	P-1, AP-1	P-1	P-1, AP-1	P-2	
256	OFFICE	CPT-1	BS-1, P-3	P-1	P-1, AP-1	P-1	P-1, AP-1	P-2	
256A	OFFICE	CPT-1	BS-1, P-3	P-1	P-1, AP-1	P-1	P-1, AP-1	P-2	
358	OFFICE	EX	BS-1, P-3	EX	EX	EX	EX	EX	

FINISH LEGEND				
FINISH TAG	MATERIAL GROUP	MATERIAL	SPEC.	COMMENT
BASE				
BS-1	BASE	RUBBER BASE	SECTION 096513 - RESILIENT BASE & ACCESSORIES	
P-3	BASE	PAINT	SECTION 099000 - PAINTING AND FINISHES	REMOVE EXISTING RUBBER BASE, PAINT EXISTING METAL BASE
CEILING				
P-2	CEILING	PAINT	SECTION 099000 - PAINTING AND FINISHES	
FLOOR				
CPT-1	FLOOR	CARPET TILE	SECTION 096813 - TILE CARPETING	
VCT-1	FLOOR	VINYL TILE	SECTION 096519- RESILIENT TILE FLOORING	
WALLS				
P-1	WALLS	PAINT	SECTION 099000 - PAINTING AND FINISHES	
AP-1	WALLS	ACOUSTICAL PANEL	SECTION 098400 - ACOUSTICAL PANELS	

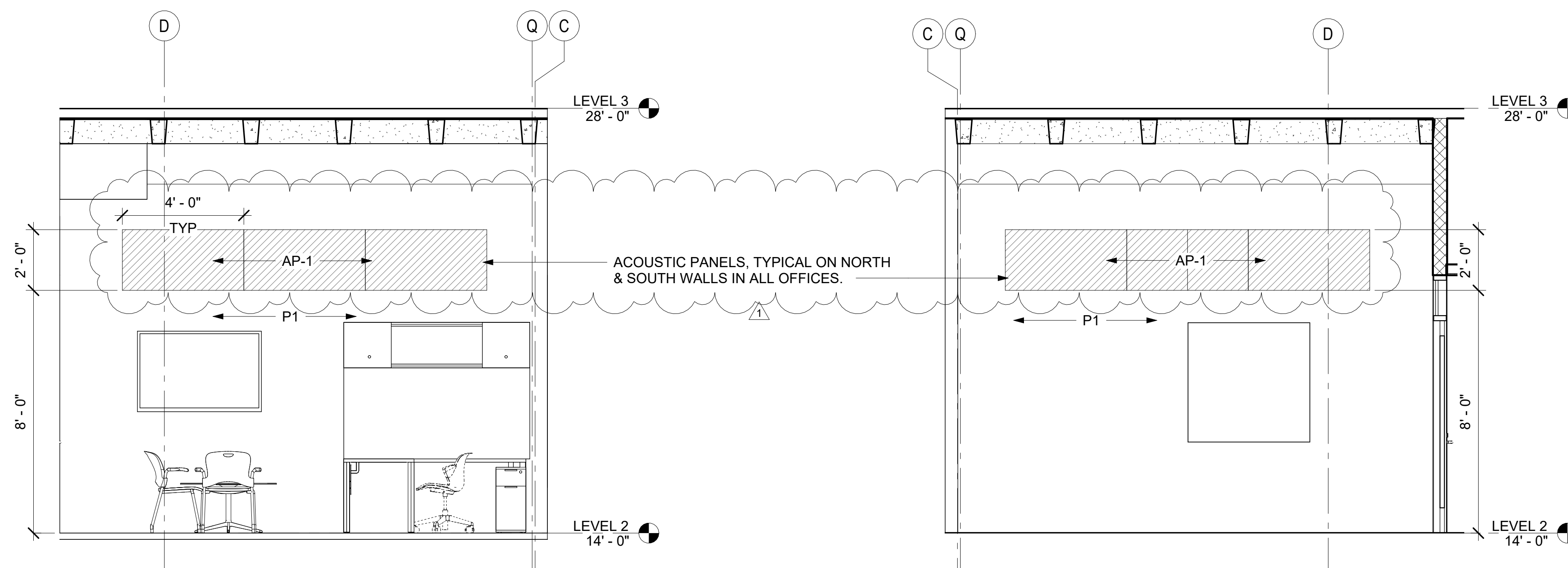


1 PLAN DETAIL OF PARTITION @ EXISTING WALL
A-600R 1 1/2" = 1'-0"

2 ROOM SIGNAGE DETAIL
A-600R 6" = 1'-0"

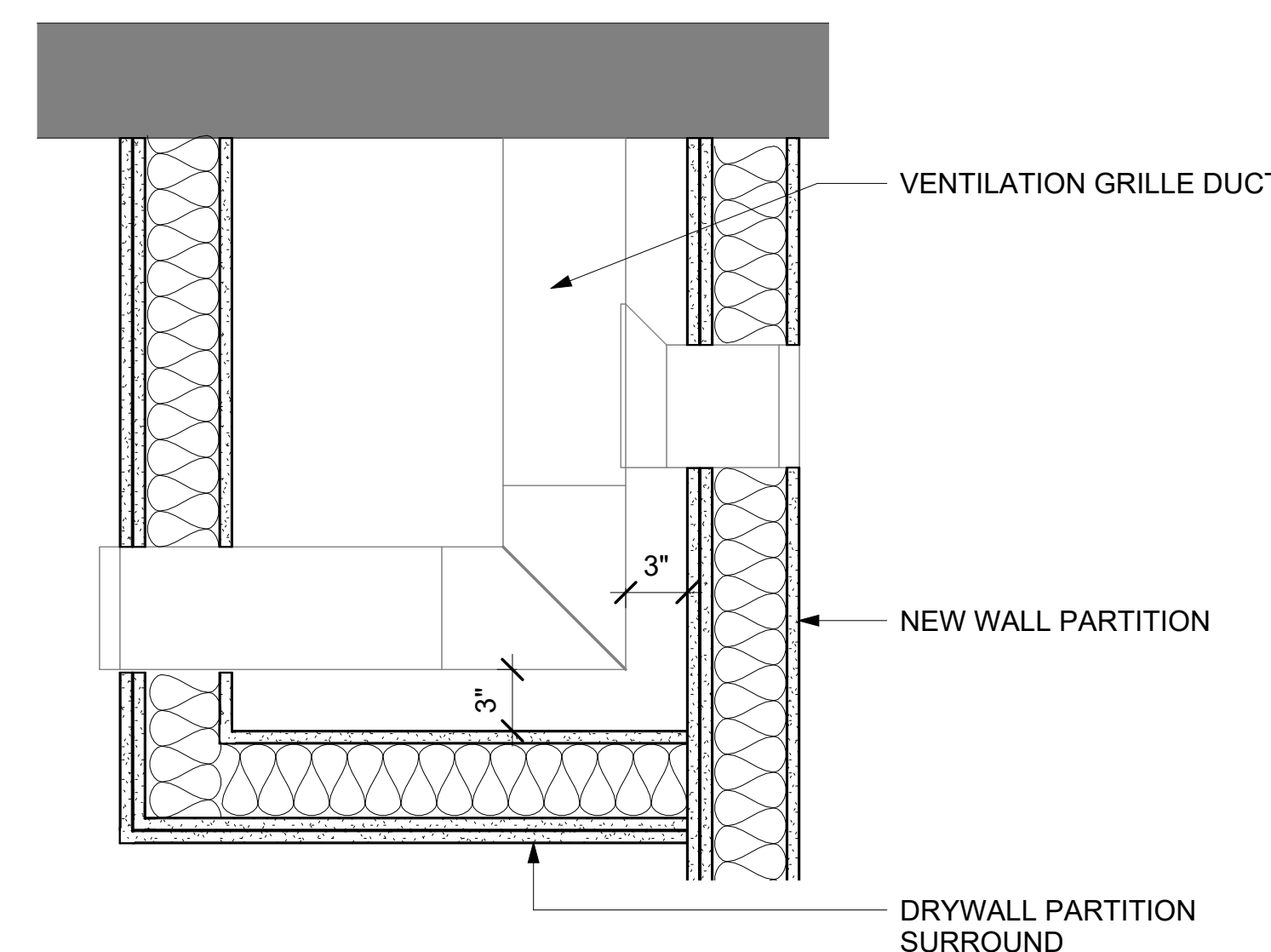


3 DETAIL OF DUCT PENETRATION THROUGH WALL
A-600R 1 1/2" = 1'-0"



4 TYPICAL OFFICE - NORTH WALL
A-600R 3/8" = 1'-0"

5 TYPICAL OFFICE - SOUTH WALL
A-600R 3/8" = 1'-0"



6 DRYWALL ENCLOSURE OF DUCTWORK DETAIL
A-600R 1 1/2" = 1'-0"

RFI Form

RFI/ Response Index	Page/ Dwg./Spec./Rep. Number	Section/ Paragraph/Topic	RFI	Design Team Response
1			Is there a spec for acoustic panels?	Yes. See Addendum No. 1, Item 1.
2	A-600R		The new partition separating the offices is shown as D2a, however the details show 2 layers of gyp on 1-side and 1 layer of gyp on 1 side for a total of 3 layers of gyp, please clarify	See Addendum No. 1, Item 2. Correct, D2a has 2 layers of gyp on one side, and 1 layer of gyp on the other side, for a total of 3 layers of gyp, as shown on A-600R and in all the details. This is for better acoustical performance.
3	A-600R		Please clarify if there the North and South walls of new new office space gets acoustical wall panels, or is it just the north wall of the new northern office, and the south wall of the new southern office	See Addendum No 1, Item 2. All subdivided offices will receive acoustic panels on the North and South walls. Detials 4&5 A-600R apply to each office in the project, TYP is noted.
4	A-601		Who is providing the wood doors, CU or GC?	Provided by CU, installed by GC. See A-601.
5	098400		Please provide acoustical wall panel spec.	Please see Addendum No. 1, Item 1.
6			The bid form has a breakdown for Div 25 Integrated Automation. I do not believe this to be applicable to this project. There is no spec for this.	It is not required and the eBuilder Bid Scope was updated.