

ADDENDUM NO. 2

April 29, 2026

This Addendum contains changes to the requirements of the Contract Documents and Specifications. Such changes are to be incorporated into the Construction Documents and shall apply to the work with the same meaning and force as if they had been included in the original document. Wherever this Addendum modifies a portion of a paragraph of the specifications or a portion of any Drawing, the remainder of the Paragraph or Drawing shall remain in force.

NOTE: Provisions of all Contract Documents apply.

Item 1. Drawing AS-501, Detail 2

DELETE Detail 2 - BEAM SEAT DETAIL in its entirety.

REPLACE with Sketch SSK-02 - BEAM SEAT DETAIL, attached.

Item 2. Drawing AS-501, Detail 4

DELETE Detail 4 - PLANK SUPPORT DETAIL in its entirety.

REPLACE with Sketch SSK-03 - PLANK SUPPORT DETAIL, attached.

Attachments: SSK-02 2/AS-501 - Beam Seat Detail
SSK-03 4/AS-501 - Plank Support Detail

******END OF ADDENDUM******



FACILITIES
ENGINEERING

WWW.FCS.CORNELL.EDU

ARCHITECTURE, AND CIVIL,
ELECTRICAL, ENVIRONMENTAL,
AND MECHANICAL ENGINEERING

201 HUMPHREYS SERVICE BLDG.
ITHACA, NEW YORK 14853-3701

UNAUTHORIZED ALTERATION OF THIS DRAWING IS A
VIOLATION OF THE NEW YORK STATE EDUCATION LAW,
SECTION 7209, SUBDIVISION 2.

ARCH/ CIVIL: _____
ELECTRICAL: _____
MECHANICAL: _____

REVISIONS

1 04/29/26 ADDENDUM 02

WILLIAM T. KEETON
HOUSE NORTH WING
STRUCTURAL
REPAIR & WATER
INFILTRATION
MITIGATION

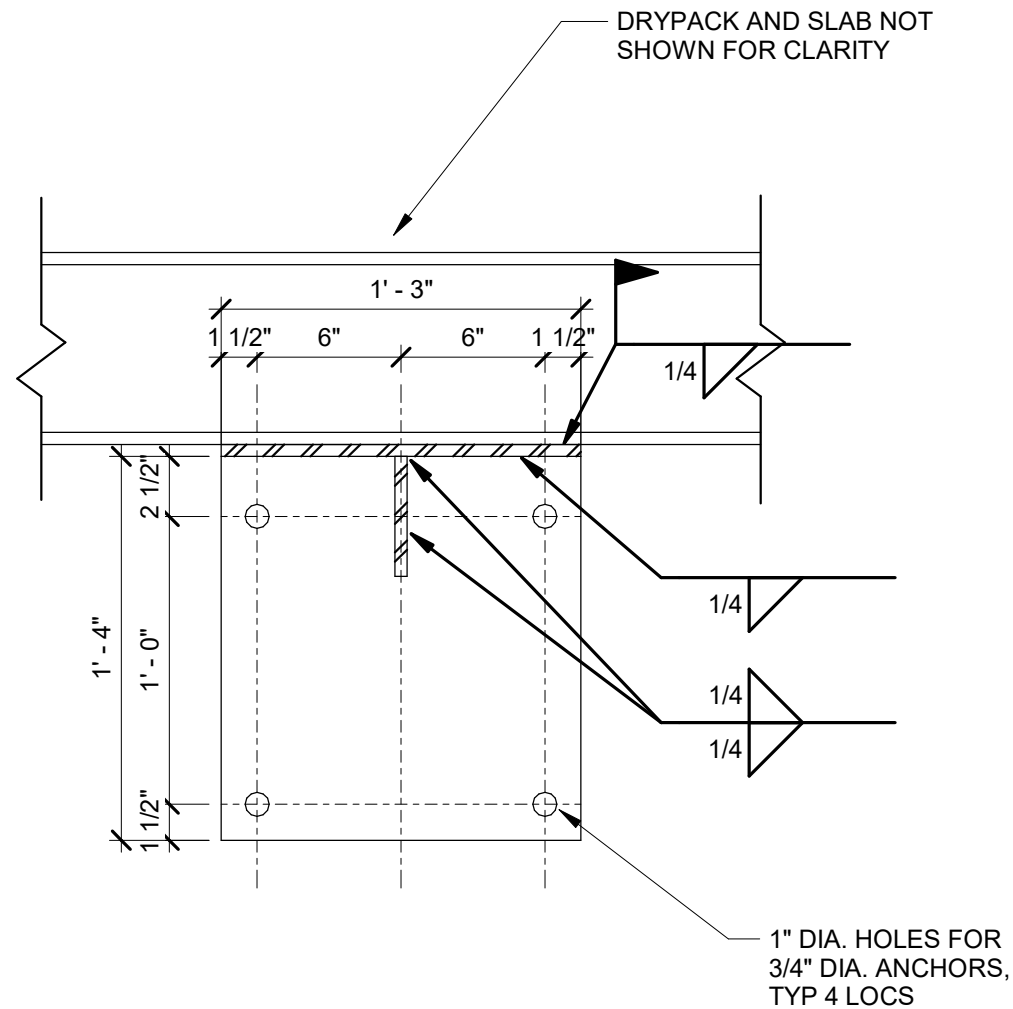
DATE: APRIL 29, 2026
FACILITY: 3034
DESIGN: Q. OLSEN-BIEBER
DRAWN: QCO

2/AS-501 BEAM SEAT
DETAIL

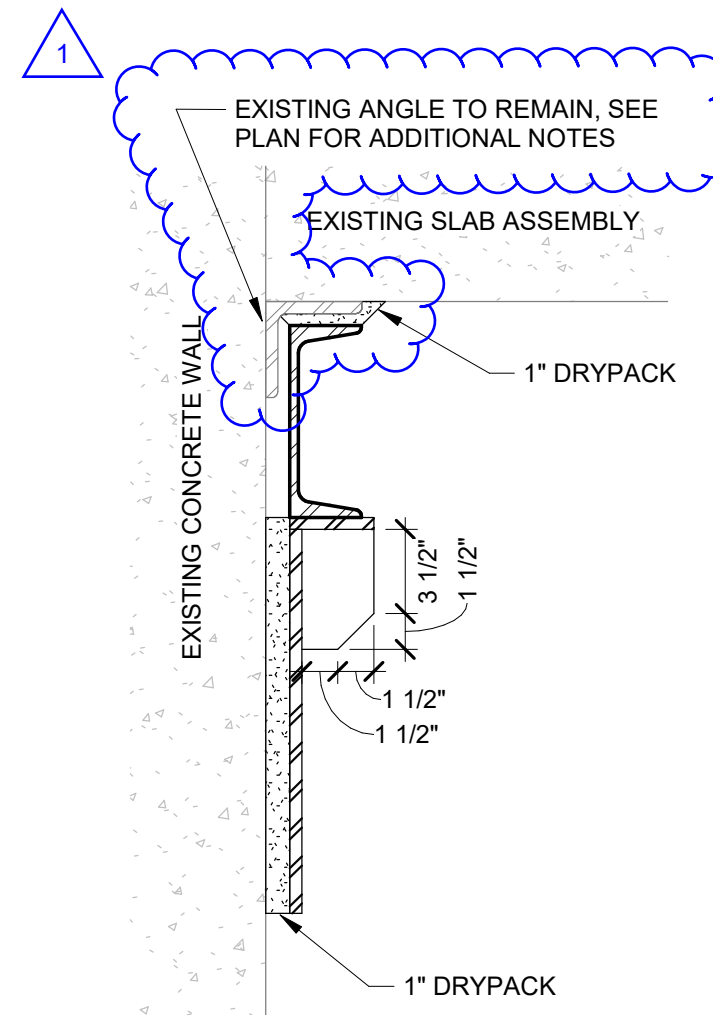
SSK-02

17759908

ARCHIVE BAR CODE



ELEVATION VIEW



SECTION VIEW

NOTES:

1. ALL PLATES ARE 1/2" THICK.
2. POST-INSTALLED ANCHORS ARE 3/4" DIAMETER X 8" LONG SS THREADED RODS EMBEDDED 4" WITH EPOXY ADHESIVE
3. DRYPACK SHALL HAVE MIN. COMPRESSIVE STRENGTH OF 5000 PSI
4. COORDINATE NEW ANCHORS WITH EXISTING REBAR LOCATIONS. CONTACT EOR TO LOCATE REBAR IN WALL PRIOR TO FINALIZING DETAILS AND SUPPORT LOCATIONS. INSTALL 11-1/2" 3-1/4" X 1/8" STEEL PLATE SHIMS IF NEEDED BETWEEN BEAM AND BEAM SEAT

2

BEAM SEAT DETAIL

SCALE: 1 1/2" = 1'-0"



FACILITIES
ENGINEERING

WWW.FCS.CORNELL.EDU

ARCHITECTURE, AND CIVIL,
ELECTRICAL, ENVIRONMENTAL,
AND MECHANICAL ENGINEERING

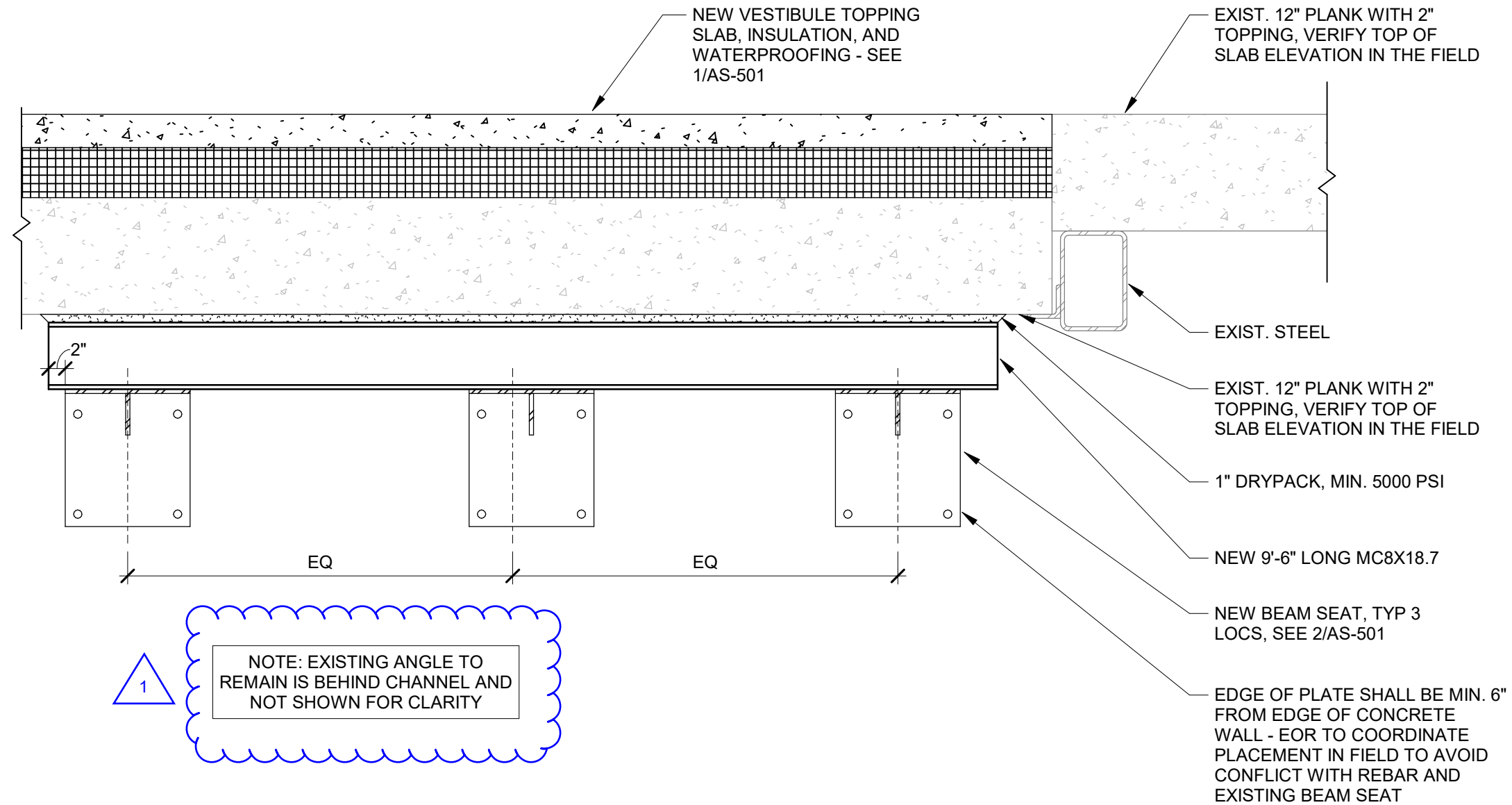
201 HUMPHREYS SERVICE BLDG.
ITHACA, NEW YORK 14853-3701

UNAUTHORIZED ALTERATION OF THIS DRAWING IS A
VIOLATION OF THE NEW YORK STATE EDUCATION LAW,
SECTION 7209, SUBDIVISION 2.

ARCH/ CIVIL: _____
ELECTRICAL: _____
MECHANICAL: _____

REVISIONS

1 | 04/29/26 | ADDENDUM 02



1

NOTE: EXISTING ANGLE TO
REMAIN IS BEHIND CHANNEL AND
NOT SHOWN FOR CLARITY

4 PLANK SUPPORT DETAIL
SCALE: 3/4" = 1'-0"

WILLIAM T. KEETON
HOUSE NORTH WING
STRUCTURAL
REPAIR & WATER
INFILTRATION
MITIGATION

DATE: APRIL 29, 2026
FACILITY: 3034
DESIGN: Q. OLSEN-BIEBER
DRAWN: QCO

4/AS-501 PLANK
SUPPORT DETAIL

SSK-03
17759908

ARCHIVE BAR CODE