

DRAWING LIST:

ARCHITECTURAL

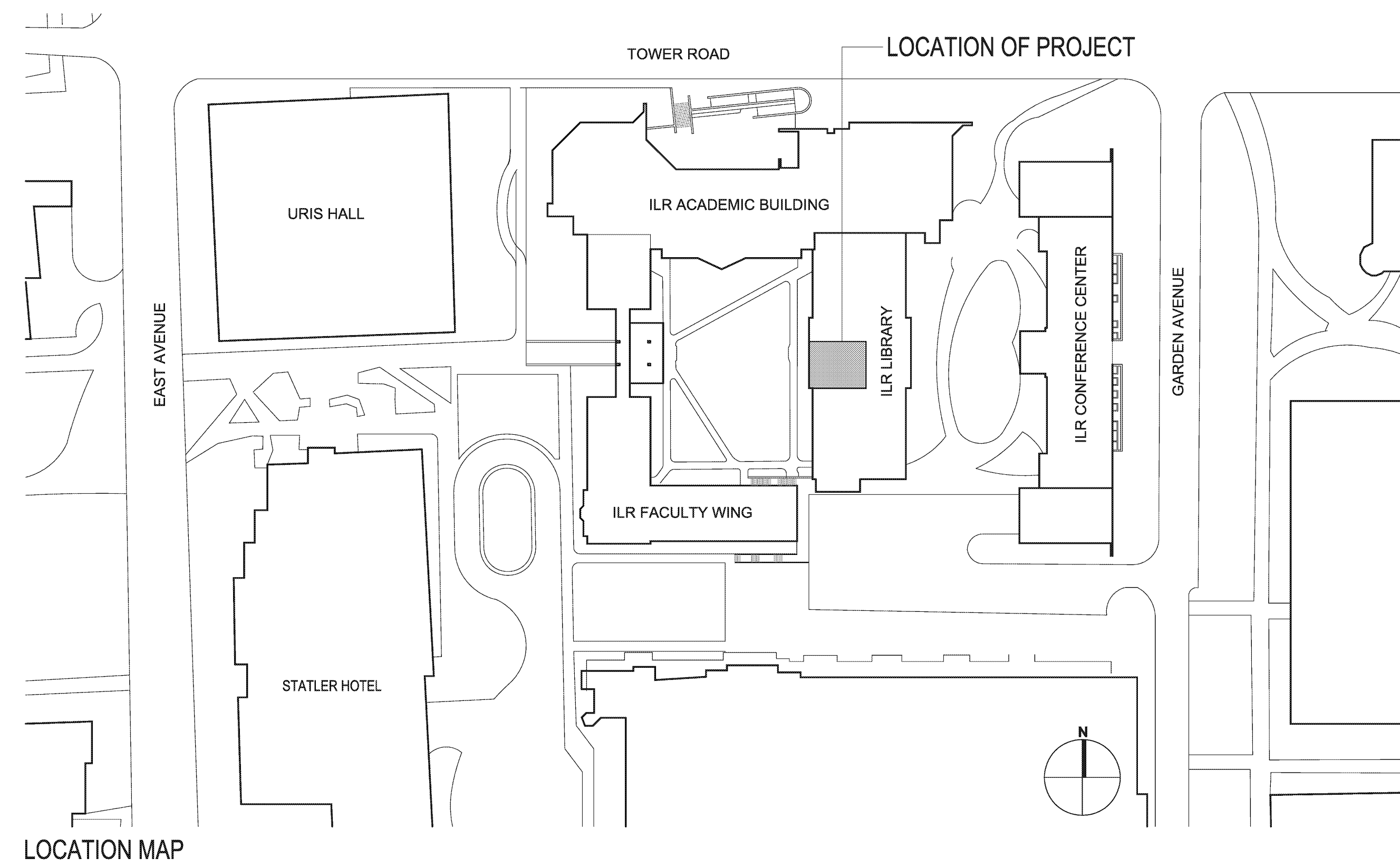
- C-1 LIBRARY LEVEL 1 PLAN- CODE ANALYSIS
- D-1 PARTIAL FIRST FLOOR AND REFLECTED CEILING DEMO PLAN
- A-1 PARTIAL FIRST FLOOR AND REFLECTED CEILING PLAN
- A-2 LIBRARY SECTIONS AND DETAILS
- A-3 LIBRARY SECTIONS AND DETAILS
- F-1 PARTIAL FIRST FLOOR FURNITURE PLAN

ELECTRICAL

- E-0 ELECTRICAL GENERAL NOTES & SYMBOL LIST
- ED-1 PARTIAL FIRST FLOOR PLAN ELECTRICAL DEMOLITION
- E-1 PARTIAL FIRST FLOOR PLAN ELECTRICAL NEW WORK

IVES HALL EAST CATHERWOOD LIBRARY COLLABORATION SPACE

**NEW YORK STATE SCHOOL OF INDUSTRIAL
AND LABOR RELATIONS AT CORNELL UNIVERSITY
CU CONTRACT #C14403
SUCF #181001**

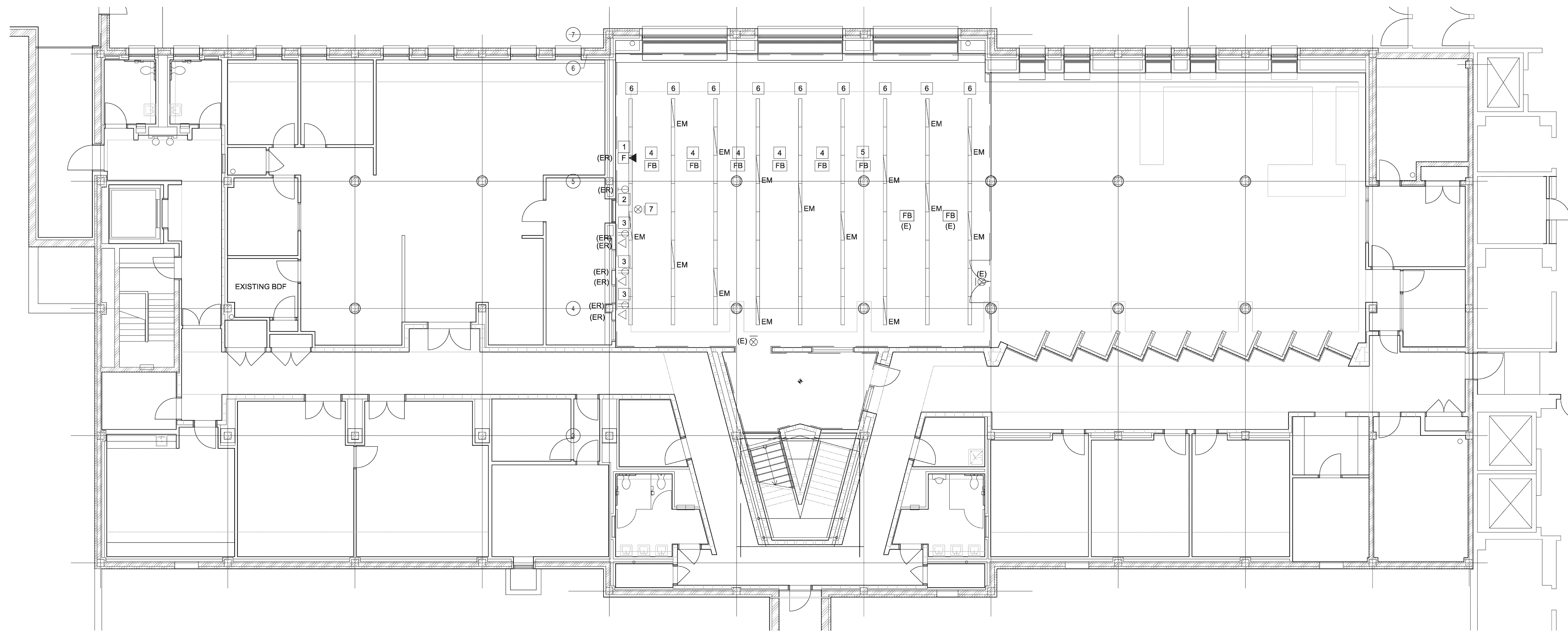


Architect
MDSzerbaty+Associates Architecture
307 7th Avenue New York, NY 10001
Tel: 212.352.3307 Fax: 212.352.9266

Mechanical/Electrical Engineers
M/E Engineering
150 North Chestnut Street
Rochester, New York 14604
Tel: 585.288.5590

ISSUE FOR BID 12 MARCH 2019





DEMOLITION NOTES:

- 1 EXISTING FIRE ALARM DEVICE SHALL BE EXTENDED FROM EXISTING WALL TO NEW FURRED OUT WALL. RAISE/LOWER DEVICE AS REQUIRED TO EXTEND TO NEW WALL. DEVICE SHALL REMAIN WITHIN ADA REQUIREMENTS OF 80-96" AFF. COORDINATE FIRE ALARM SYSTEM SHUTDOWN WITH CORNELL EH&S AND PROVIDE A MINIMUM OF 2 WEEKS NOTICE.
- 2 EXISTING SIMPLEX RECEPTACLE SHALL BE EXTENDED FROM EXISTING WALL TO NEW FURRED OUT WALL. RAISE/LOWER DEVICE AS REQUIRED TO EXTEND TO NEW WALL. DEVICE SHALL REMAIN AS CLOSE TO 18" AFF AT FURRED OUT WALL. PROVIDE EXTENSION OF BRANCH CIRCUIT AS REQUIRED.
- 3 EXISTING DUPLEX RECEPTACLE AND DATA DROP SHALL BE EXTENDED FROM EXISTING WALL TO NEW FURRED OUT WALL. RAISE/LOWER DEVICES AS REQUIRED TO EXTEND TO NEW WALL. DEVICE SHALL REMAIN AS CLOSE TO 18" AFF AT FURRED OUT WALL AND REMAIN AT SAME ELEVATION BETWEEN ADJACENT DEVICES. PROVIDE EXTENSION OF BRANCH CIRCUIT AS REQUIRED.
- 4 EXISTING FLOOR BOXES COVER AND INTERIOR WIRING DEVICE TO BE REMOVED AND REPLACED WITH NEW A CUSTOM COVER AS NOTED ON DRAWING A-3. PROVIDE A NEW HUBBELL SA3825 COVER IN NEW CUSTOM COVER WITH A NEW DUPLEX RECEPTACLE BEHIND. FLOOR BOX SHALL HAVE ONE DUPLEX RECEPTACLE. RECEPTACLE WILL UTILIZE EXISTING CIRCUITS MADE SPARE DURING DEMOLITION. REWORK EXISTING CIRCUITS AS REQUIRED TO CONNECT TO NEW WIRING DEVICE.
- 5 EXISTING FLOOR BOX TO BE REMOVED COMPLETELY. REMOVE ALL WIRING BACK TO SOURCE OR NEAREST EXISTING TO REMAIN JUNCTION BOX.
- 6 EXISTING LIGHT FIXTURES TO BE REMOVED. SALVAGE EXISTING LIGHTING CIRCUITS FOR EXTENSION AND RECONNECTION TO NEW LIGHT FIXTURES.
- 7 EXISTING EXIT SIGN TO BE REMOVED. REMOVE POWER BACK TO NEAREST JUNCTION BOX TO REMAIN.

1 PARTIAL FIRST FLOOR PLAN - ELECTRICAL DEMOLITION
ED-1 SCALE: 1/8" = 1'-0"



ISSUE FOR BID 12 MARCH 2019

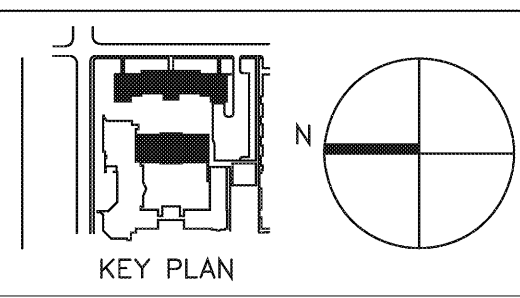
NO.	DATE	REV. BY	REVISION DESCRIPTION

**IVES HALL EAST CATHERWOOD
LIBRARY COLLABORATION SPACE**

CORNELL UNIVERSITY, ITHACA, NY

Architect
M/Szerbaty & Associates
307 7th Avenue
New York, NY 10001 Tel: 212.352.3307

Mechanical/Electrical Engineer
M/E Engineering
150 North Chestnut St.
Rochester, NY 14604
M/E # 140461



TITLE: **PARTIAL FIRST FLOOR PLAN
ELECTRICAL DEMOLITION**
SCALE: AS NOTED
DRAWN BY: MRG
CHECKED BY: MRG
DATE: 06-09-15

CONTRACT NO. C14403
ED-1
SHEET NO.