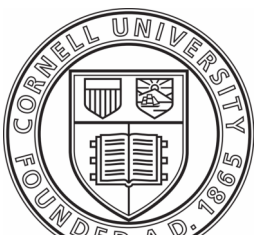


Cornell University

# COLLEGE AVE 301 TURNOVER



FACILITIES  
ENGINEERING  
WWW.FCS.CORNELL.EDU

ARCHITECTURE, AND CIVIL,  
ELECTRICAL, ENVIRONMENTAL,  
AND MECHANICAL ENGINEERING

201 HUMPHREYS SERVICE BLDG.  
ITHACA, NEW YORK 14853-3701

**WARNING**  
IT IS A VIOLATION OF NEW YORK STATE LAW FOR ANY PERSON, UNLESS ACTING UNDER THE DIRECTION OF A LICENSED ARCHITECT OR ENGINEER, TO ALTER THIS DOCUMENT IN ANY WAY. IF THIS DOCUMENT IS ALTERED, THE ALTERING ARCHITECT OR ENGINEER SHALL AFFIX TO SUCH DOCUMENT THEIR SEAL AND THE NOTATION "ALTERED BY" FOLLOWED BY THEIR SIGNATURE, THE DATE OF SUCH ALTERATION, AND A SPECIFIC DESCRIPTION OF THE ALTERATION.

ARCH/ CIVIL:

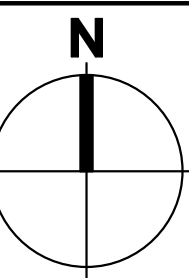
ELECTRICAL:

MECHANICAL:

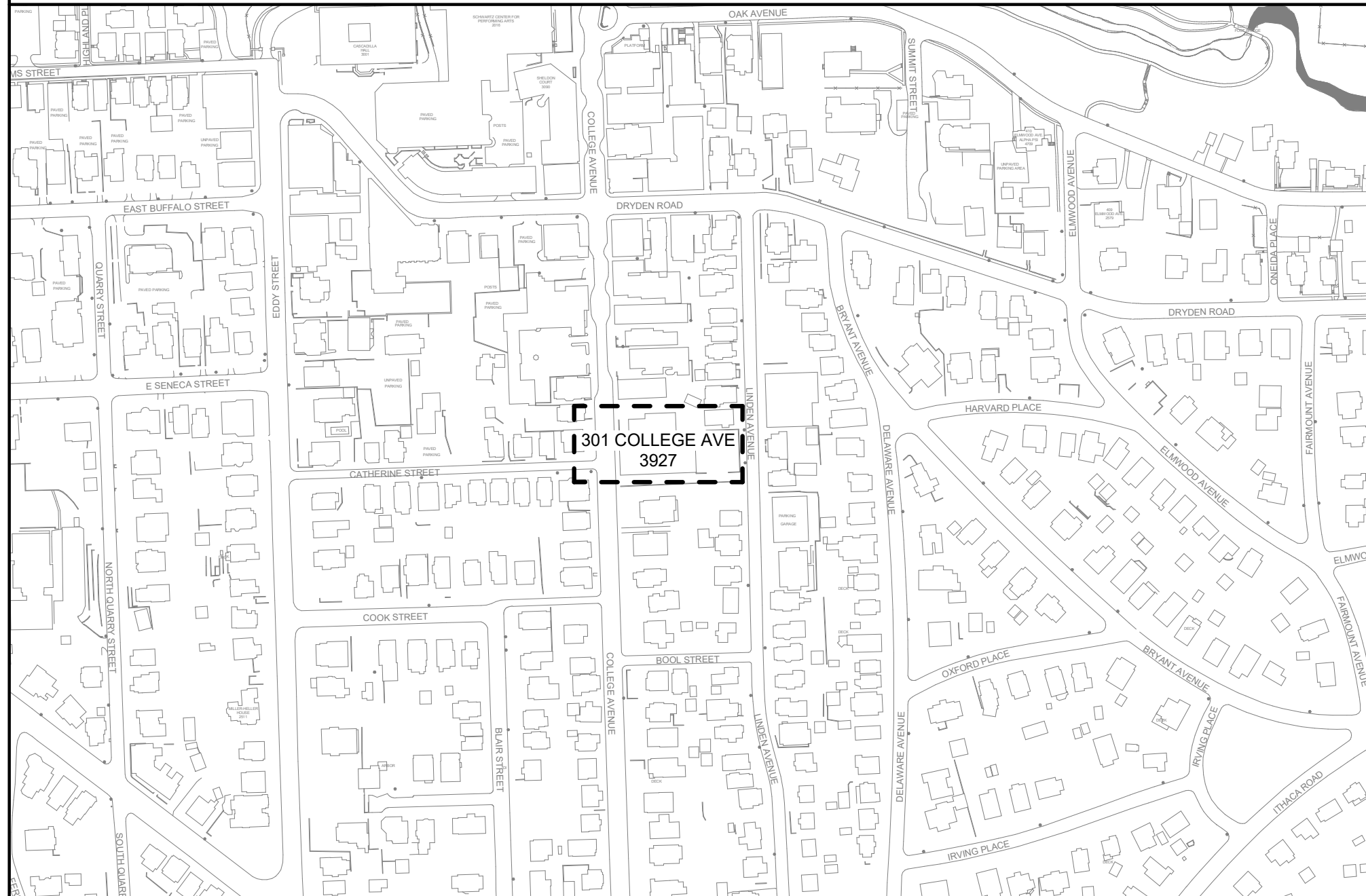


## REVISIONS

1 12/12/25 ISSUE FOR PERMIT  
2 01/23/26 ISSUE FOR CONSTRUCTION



## SITE LOCATION - 301 COLLEGE AVENUE



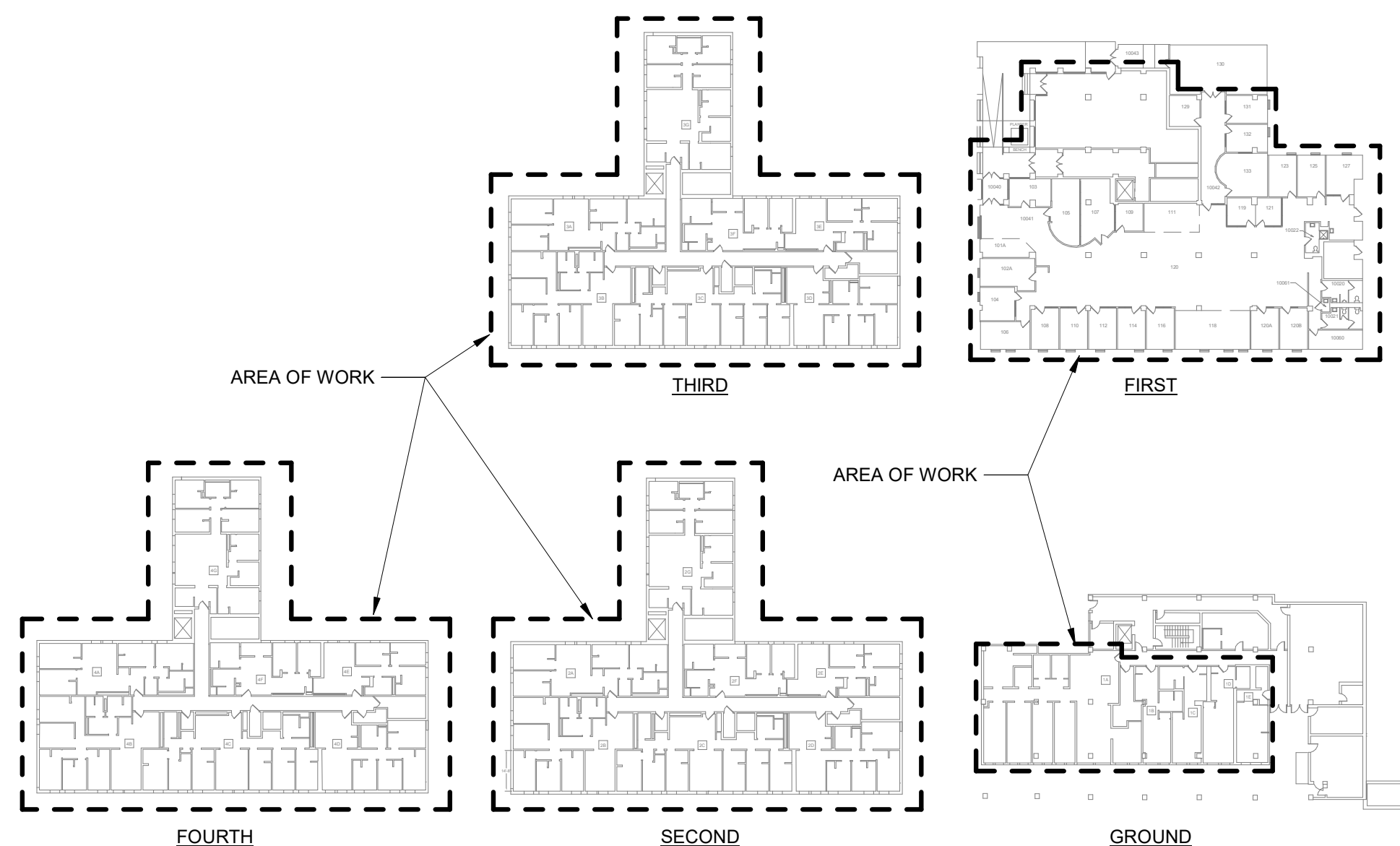
## SITE PHOTO



## SHEET INDEX

|                 |        |   |
|-----------------|--------|---|
| GENERAL         | T-001  | TITLE SHEET   |
| FIRE PROTECTION | FP-001 | FIRE PROTECTION GENERAL NOTES AND SYMBOL LEGENDS            |
|                 | FP-101 | FIRE PROTECTION GROUND FLOOR RENOVATION PLAN                |
|                 | FP-102 | FIRE PROTECTION FIRST FLOOR RENOVATION PLAN                 |
|                 | FP-103 | FIRE PROTECTION SECOND THROUGH FOURTH FLOOR RENOVATION PLAN |
|                 | FP-401 | FIRE PROTECTION DETAILS                                     |
| ELECTRICAL      | E-001  | GENERAL NOTES AND SYMBOL LEGENDS                            |
|                 | E-101  | FIRE ALARM GROUND FLOOR RENOVATION PLAN                     |
|                 | E-102  | FIRE ALARM FIRST FLOOR RENOVATION PLAN                      |
|                 | E-201  | GROUND FLOOR AND FIRST FLOOR EM AND EXIT SIGN PLANS         |
|                 | E-202  | 2ND AND 3RD FLOOR EM LIGHTING AND EXIT SIGN PLANS           |
|                 | E-203  | 4TH FLOOR EM LIGHTING AND EXIT SIGN PLAN                    |

## KEY PLANS



## PROJECT SCOPE

THE PURPOSE OF THIS PROJECT IS TO PROVIDE SPRINKLER COVERAGE TO AREAS THAT ARE NOT CURRENTLY SPRINKLER-PROTECTED AND REPLACE EXISTING HEADS THAT ARE DAMAGED.

THE FIRE ALARM DRAWINGS (E-100 SERIES) PROVIDE CODE-COMPLIANCE UPGRADES TO THE EXISTING FIRE ALARM SYSTEM, DOCUMENT EXISTING DEVICE LOCATIONS, ADD NEW INITIATING AND NOTIFICATION DEVICES WHERE REQUIRED, AND REPROGRAM THE EXISTING CELLULAR DIALER TO REPORT TO CORNELL'S CENTRAL MONITORING STATION AT BARTON HALL IN ACCORDANCE WITH NFPA 72.

THE EMERGENCY LIGHT AND EXIT SIGN DRAWINGS (E-200 SERIES) INCLUDE NEW BATTERY-OPERATED EMERGENCY LIGHTS, EXIT SIGNS, AND EXIT DISCHARGE LIGHTING.

## GENERAL SYMBOLS LEGEND

|  |                    |  |                    |
|--|--------------------|--|--------------------|
|  | EXTERIOR ELEVATION |  | INTERIOR ELEVATION |
|  | 1/ A-101           | PHOTO/ VIEW REFERENCE                  |                    |
|  | 1 X-100            | SECTION MARKER                         |                    |
|  | 1 X-100            | ENLARGED DETAIL                        |                    |
|  | #                  | CONSTRUCTION KEYED NOTE                |                    |
|  | #                  | DEMOLITION KEYED NOTE                  |                    |
|  | #                  | DRAWING REVISION NOTE                  |                    |
|  | —                  | LINETYPE: EXISTING TO REMAIN           |                    |
|  | ---                | LINETYPE: DEMOLITION / TO BE RELOCATED |                    |
|  | ---                | LINETYPE: TO BE PROVIDED / NEW         |                    |

## BUILDING CODE SUMMARY

**APPLICABLE CODES**  
2020 NYS BUILDING CODE  
2020 NYS EXISTING BUILDING CODE  
2020 NYS FIRE CODE  
2017 NFPA 70 NATIONAL ELECTRIC CODE  
2016 NFPA 72 NATIONAL FIRE ALARM AND SIGNALING CODE

**PROJECT SUMMARY**  
THIS PROJECT INCLUDES THE RENOVATION OF (28,700) SF OF APARTMENTS AND COMMERCIAL SPACE. THE WORK IS ALTERATION LEVEL 2 DUE TO THE ADDITION OFF NEW SPRINKLER HEADS AND PIPING.

**BUILDING LIMITATIONS**  
CONSTRUCTION CLASSIFICATION: IIA  
CLASSIFICATION OF HAZARDS: NO  
HIGH-RISE BUILDING: NO  
EXTINGUISHING REQUIREMENT: PROJECT WILL MAKE BUILDING FULLY SPRINKLERED.

**OCCUPANCY**  
OCCUPANCY CLASSIFICATION: RESIDENTIAL (R-2)/ BUSINESS (B)/ MERCANTILE (M)

301 COLLEGE AVENUE  
ITHACA, NEW YORK 14850

## COLLEGE AVE 301 TURNOVER

DATE: JANUARY 23, 2026  
FACILITY: 3927  
DESIGN: FE DESIGN  
DRAWN: FHS

## TITLE SHEET

T-001  
17839620

ARCHIVE BAR CODE



| FIRE PROTECTION ACCESSORIES SCHEDULE |                            |                 |              |                       |                      |
|--------------------------------------|----------------------------|-----------------|--------------|-----------------------|----------------------|
| FP ACCESS TAG                        | FP ACCESS DEVICE           | BASIS OF DESIGN |              | PRESSURE RATING (PSI) | NOTES                |
|                                      |                            | MANUFACTURER    | MODEL NUMBER |                       |                      |
| BV-01                                | AUXILIARY DRAIN BALL VALVE | VICTAULIC       | SERIES ABV   | 300                   |                      |
| FDC                                  | FIRE DEPARTMENT CONNECTION | POTTER ROEMER   | 5795-02-30   | 300                   |                      |
| ID                                   | IDENTIFICATION PLATE       | POTTER ROEMER   | 5966         | N/A                   | LETTERING: -A AND -S |

| FIRE PROTECTION PIPING SCHEDULE   |              |            |  |   |  |
|---|--------------|------------|--|---|--|
| NOTES:<br>1. ACCEPTABLE MANUFACTURERS:<br>A) VICTAULIC FOR GROOVED FITTINGS<br>B) ANVIL FOR CAST IRON FITTINGS<br>C) WHEATLAND FOR PIPING |              |            |  |   |  |
| PIPE SERVICE  | ABBREVIATION | PIPE SIZE  | MATERIAL   | FITTINGS  |  |
| WET SPRINKLER   | FP           | 4" & BELOW | ASTM A 53 TYPE F STEEL, SCHEDULE 40 BLACK, GRADE A | CAST OR MALLEABLE IRON THREADED OR DUCTILE IRON GROOVED |  |
| WET SPRINKLER   | FP           | 6" & ABOVE | ASTM A 53 TYPE E STEEL, SCHEDULE 40 BLACK, GRADE A | CAST OR MALLEABLE IRON THREADED OR DUCTILE IRON GROOVED |  |

| SPRINKLER SCHEDULE  |                 |             |          |              |          |                         |              |        |
|---|-----------------|-------------|----------|--------------|----------|-------------------------|--------------|--------|
| NOTES:<br>1. ACCEPTABLE MANUFACTURERS: RELIABLE AND VICTAULIC |                 |             |          |              |          |                         |              |        |
| SPRINKLER TYPE  | BASIS OF DESIGN |             | RESPONSE | ORIFICE (IN) | K-FACTOR | TEMPERATURE RATING (°F) | CONSTRUCTION | FINISH |
|   | MANUFACTURER    | MODEL (SIN) |          |              |          |                         |              |        |
| UPRIGHT   | RELIABLE        | F1FR56      | QUICK    | 1/2          | 5.6      | 155                     | BRASS        | CHROME |
| SEMI-RECESSED PENDANT   | RELIABLE        | F1FR56      | QUICK    | 1/2          | 5.6      | 155                     | BRASS        | CHROME |
| DRY HORIZONTAL SIDEWALL                                       | RELIABLE        | F3QR56      | QUICK    | 1/2          | 5.6      | 155                     | BRASS        | CHROME |
| EXTENDED COVERAGE HORIZONTAL SIDEWALL                         | RELIABLE        | DH56        | QUICK    | 1/2          | 5.6      | 155                     | BRASS        | CHROME |

| FIRE PROTECTION SUBMITTAL REGISTRY |                            |                        |               |                 |                   |              |           |                 |              |         |           |                |                  |
|------------------------------------|----------------------------|------------------------|---------------|-----------------|-------------------|--------------|-----------|-----------------|--------------|---------|-----------|----------------|------------------|
| SECTION                            | DESCRIPTION                | MATERIAL               | SHOP DRAWINGS | COORD. DRAWINGS | AS-BUILT DRAWINGS | PRODUCT DATA | SCHEDULES | WIRING DIAGRAMS | CALCULATIONS | SAMPLES | STANDARDS | CERTIFICATIONS | MFR INSTRUCTIONS |
|                                    |                            |                        |               |                 |                   |              |           |                 |              |         |           |                |                  |
| 211313                             | WET-PIPE SPRINKLER SYSTEMS | STEEL PIPE & FITTINGS  | X             | X               | X                 | X            | X         | X               | X            | X       | X         | X              | X                |
| 211313                             | --                         | SPRINKLERS             | X             | X               | X                 | X            |           | X               | X            | X       | X         | X              | X                |
| 211313                             | --                         | FIRE PROTECTION VALVES | X             | X               | X                 | X            |           | X               | X            | X       | X         | X              | X                |
| 211313                             | --                         | HYDRULAIC CALCULATIONS |               |                 |                   |              |           | X               | X            | X       |           |                |                  |

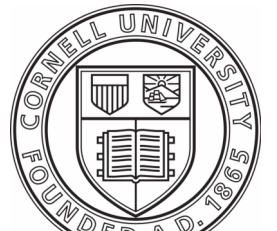
| GENERAL DRAWING SYMBLOGY |                         |
|--------------------------|-------------------------|
|                          | DEMOLISHED WORK         |
|                          | EXISTING TO REMAIN      |
|                          | NEW WORK                |
| (E)                      | EXISTING TO REMAIN      |
|                          | POINT OF CONNECTION     |
|                          | POINT OF DISCONNECTION  |
| #                        | CONSTRUCTION KEYED NOTE |
| #                        | DEMOLITION KEYED NOTE   |

| FIRE PROTECTION ABBREVIATIONS |                                |
|-------------------------------|--------------------------------|
| BFP                           | BACKFLOW PREVENTOR             |
| BOP                           | BOTTOM OF PIPE                 |
| DN                            | DOWN                           |
| DPV                           | DRY PIPE VALVE                 |
| FP                            | FIRE PROTECTION                |
| NTS                           | NOT TO SCALE                   |
| RPZ                           | REDUCED PRESSURE ZONE ASSEMBLY |
| SP                            | SPRINKLER                      |
| TYP                           | TYPICAL                        |
| WM                            | WATER METER                    |

| FIRE PROTECTION SYMBLOGY |   |
|--------------------------|---|
|                          | AIR VENT, AUTOMATIC                             |
|                          | AIR VENT, MANUAL                                |
|                          | BACKFLOW PREVENTOR, DOUBLE-CHECK VALVE (DCV)    |
|                          | BACKFLOW PREVENTOR, REDUCED PRESSURE ZONE (RPZ) |
|                          | BALL VALVE                                      |
|                          | BOTTOM OF PIPE CONNECTION                       |
|                          | BUTTERFLY VALVE / CONTROL VALVE                 |
|                          | CAP OR PLUG                                     |
|                          | CHECK VALVE                                     |
|                          | DIRECTION OF FLOW, PIPING                       |
|                          | FIRE AND SMOKE DAMPER IN DUCT                   |
|                          | FIRE DAMPER IN DUCT                             |
|                          | FLANGE CONNECTION                               |
|                          | FLEXIBLE CONNECTION (PIPE)                      |
|                          | FLOW METER                                      |
|                          | FLOW SWITCH                                     |
|                          | GATE VALVE                                      |
|                          | GATE VALVE, ANGLE                               |
|                          | GLOBE VALVE                                     |
|                          | GLOBE VALVE, ANGLE                              |
|                          | PIPE DOWN                                       |
|                          | PIPE UP   |
|                          | PUMP  |
|                          | PRESSURE SWITCH                                 |
|                          | SPRINKLER, PENDANT                              |
|                          | SPRINKLER, PENDANT WITH GUARD                   |
|                          | SPRINKLER, PENDANT ON DROP                      |
|                          | SPRINKLER, PENDANT ON DROP WITH GUARD           |
|                          | SPRINKLER, UPRIGHT                              |
|                          | SPRINKLER, UPRIGHT WITH GUARD                   |
|                          | SPRINKLER, UPRIGHT ON SPRIG                     |
|                          | SPRINKLER, UPRIGHT ON SPRIG WITH GUARD          |
|                          | SPRINKLER, SIDEWALL                             |
|                          | SPRINKLER, PENDANT (DRY)                        |
|                          | SPRINKLER, PENDANT WITH GUARD (DRY)             |
|                          | SPRINKLER, PENDANT ON DROP (DRY)                |
|                          | SPRINKLER, PENDANT ON DROP WITH GUARD (DRY)     |
|                          | SPRINKLER, UPRIGHT (DRY)                        |
|                          | SPRINKLER, UPRIGHT WITH GUARD (DRY)             |
|                          | SPRINKLER, UPRIGHT ON SPRIG (DRY)               |
|                          | SPRINKLER, UPRIGHT ON SPRIG WITH GUARD (DRY)    |
|                          | SPRINKLER, SIDEWALL (DRY)                       |
|                          | STRAINER  |
|                          | TOP PIPE CONNECTION                             |
|                          | UNION   |

| FIRE PROTECTION SCOPE OF WORK |  |
|-------------------------------|--|
| 1.0                           | EXTEND EXISTING SPRINKLER SYSTEM TO PROVIDE COVERAGE IN NON-COMPLIANT, UNSPRINKLERED AREAS.  |
| 2.0                           | REPLACE ALL SPRINKLER HEADS THAT HAVE THEIR FUSIBLE LINKS COVERED IN PAINT.  |
| FIRE PROTECTION GENERAL NOTES |  |
| 1.0                           | IT IS THE INTENT OF THESE DRAWINGS TO PROVIDE MODIFICATIONS TO THE WET FIRE PROTECTION SYSTEMS FOR THE PROTECTION OF 301 COLLEGE AVENUE.   |
| 2.0                           | PRIOR TO ALTERATIONS, THE SPRINKLER CONTRACTOR SHALL FIELD VERIFY EXTENT OF ALTERATION AND NEW WORK, WITH REGARD TO EXISTING CONDITIONS AT PIPE PENETRATIONS THROUGH FLOORS, WALLS, CEILINGS AND SOFFITS.  |
| 3.0                           | ALL SPRINKLER COMPONENTS SHALL BE UNDERWRITER'S LABORATORIES (UL) AND FACTORY MUTUAL (FM) APPROVED.  |
| 4.0                           | NEW SPRINKLER SYSTEM PIPING SHALL BE INSTALLED CONCEALED ABOVE DROP CEILINGS IN ROOMS THAT HAVE A CEILING AND EXPOSED IN ALL OTHER AREAS. PIPING AND HANGER ASSEMBLIES SHALL BE PAINTED TO MATCH SURROUNDING AREAS.  |
| 5.0                           | THE DRAWINGS ARE DIAGRAMMATIC AND INDICATE ONLY THE GENERAL ARRANGEMENT OF THE ITEMS INCLUDED IN THE FIRE PROTECTION WORK. AS SUCH, CONTRACTOR SHALL PROVIDE A COMPLETE SPRINKLER SYSTEM IN STRICT ACCORDANCE WITH THE REQUIREMENTS OF FM GLOBAL STANDARDS, THE NFPA 13-INSTALLATION OF FIRE PROTECTION SYSTEMS, THE NEW YORK STATE BUILDING CODES, THE NEW YORK STATE FIRE CODES, LOCAL CODES, AND GOVERNING AUTHORITIES. THE DESIGN OF FIRE PROTECTION SYSTEMS TO WITHSTAND SEISMIC EVENTS SHALL BE IN ACCORDANCE WITH THE CRITERIA DEVELOPED BY THE NFPA. |
| 6.0                           | CONTRACTOR SHALL REQUEST SPRINKLER SYSTEM SHUTDOWNS THROUGH CORNELL CUSTOMER SERVICE (607.255.5322) A MINIMUM OF TEN (10) DAYS PRIOR TO THE SHUTDOWN DATE. THE CONTRACTOR SHALL BEAR THE COST OF THE UTILITY SHUTDOWN. NOTIFY THE OWNERS REPRESENTATIVE TO COORDINATE BUILDING FUNCTIONS WITH THE BUILDING COORDINATOR.  |
| 7.0                           | COORDINATE THE EXACT LOCATION OF SPRINKLERS, EQUIPMENT, AND DEVICES WITH ARCHITECTURAL, MECHANICAL, ELECTRICAL AND ALL OTHER TRADES DRAWINGS PRIOR TO ROUGH-IN AND INSTALLATION.   |
| 8.0                           | SPRINKLER PIPING SHALL BE ARRANGED TO DRAIN THROUGH THE MAIN DRAIN VALVE WHENEVER PRACTICAL. ALL TRAPPED SECTIONS OF PIPE, EXCEPT THOSE SUPPLYING A SINGLE SPRINKLER, SHALL BE PROVIDED WITH LOW POINT DRAIN ASSEMBLY.   |
| 9.0                           | PENETRATIONS THROUGH CONCRETE FLOORS AND WALLS SHALL BE MADE WITH GALVANIZED PIPE SLEEVES. ALL PENETRATIONS SHALL CONTAIN FIRE STOPPING WITH A FIRE RATING EQUAL TO THAT OF THE AREA BEING PENETRATED.   |
| 10.0                          | SPRINKLER PIPING SHALL BE LABELED.   |
| 11.0                          | AFTER ALL WORK HAS BEEN COMPLETED, ACCEPTANCE TESTING SHALL BE SCHEDULED THROUGH EH&S, AND SHALL BE WITNESSED BY EH&S AND CITY OF ITHACA REPRESENTATIVES.  |
| 12.0                          | HYDROSTATIC TEST SHALL BE PERFORMED AT 200 PSI (OR 50 PSI ABOVE STATIC PRESSURE IF SYSTEM PRESSURE IS ABOVE 150 PSI), FOR A PERIOD OF 2-HOURS. A REPRESENTATIVE OF ENVIRONMENTAL HEALTH AND SAFETY SHALL WITNESS HYDROSTATIC TESTING OF THE NEW PIPING INSTALLATIONS AND ALTERATIONS. THE AUTHORITY HAVING JURISDICTION (ITHACA FIRE DEPARTMENT) REQUIRES THAT ONE OF THEIR REPRESENTATIVES WITNESSES HYDROSTATIC TESTING AND FLUSHING. ADVANCE NOTICE AND SCHEDULING IS REQUIRED THROUGH EH&S.  |
| 13.0                          | ANY FIRESTOPPING DISTURBED DURING THE COURSE OF WORK SHALL BE REPAIRED TO MAINTAIN A 2-HOUR FIRE RATING.   |
| 14.0                          | FLUSHING FULL-PORT BALL VALVES SHALL BE PROVIDED ON ALL ABOVEGROUND MAINS, CROSS-MAINS, AND BRANCH LINES TO FACILITATE ANY FUTURE PERIODIC INTERNAL INSPECTIONS, OBSTRUCTION INVESTIGATIONS, AND FLUSHING. VALVES SHALL OBTAIN THE NFPA 25 REQUIRED MINIMUM VELOCITY OF 10 FT/S. THE FOLLOWING PRESCRIPTIVE SIZING RULES SHALL BE APPLIED:<br>1" THROUGH 2-1/2": LINE SIZE BALL VALVE  |

| HYDRAULIC CALCULATIONS |   |
|------------------------|---|
| 1.0                    | CALCULATIONS REQUIRED BY CONTRACTOR. PROVIDE GROUND FLOOR, FOURTH FLOOR, AND MANUAL STANDPIPE CALCULATION. STANDPIPE CALCULATION WITH 150PSI AT FDC.  |
| 2.0                    | CONTRACTOR TO USE ROOM DESIGN METHOD FROM NFPA 13. CALCULATIONS TO INCLUDE UP TO FOUR (4) SPRINKLERS IN THE HYDRAULICALLY MOST DEMANDING COMPARTMENT AND ADDITIONAL SPRINKLERS LOCATED IN ALL COMMUNICATING SPACES. |



FACILITIES  
ENGINEERING  
WWW.FCS.CORNELL.EDU


ARCHITECTURE, AND CIVIL,  
ELECTRICAL, ENVIRONMENTAL,  
AND MECHANICAL ENGINEERING


201 HUMPHREYS SERVICE BLDG.  
ITHACA, NEW YORK 14853-3701


WARNING

IT IS A VIOLATION OF NEW YORK STATE LAW FOR ANY PERSON, UNLESS ACTING UNDER THE DIRECTION OF A LICENSED ARCHITECT OR ENGINEER, TO ALTER THIS DOCUMENT IN ANY WAY. IF THIS DOCUMENT IS ALTERED, THE ALTERING ARCHITECT OR ENGINEER SHALL AFFIX TO SUCH DOCUMENT THEIR SEAL AND THE NOTATION "ALTERED BY" FOLLOWED BY THEIR SIGNATURE, THE DATE OF SUCH ALTERATION, AND A SPECIFIC DESCRIPTION OF THE ALTERATION.

ARCH/ CIVIL:

ELECTRICAL: 

MECHANICAL: 



REVISIONS

|   |          |                        |
|---|----------|------------------------|
| 1 | 12/12/25 | ISSUE FOR PERMIT       |
| 2 | 01/23/26 | ISSUE FOR CONSTRUCTION |

301 COLLEGE AVENUE  
ITHACA, NEW YORK 14850

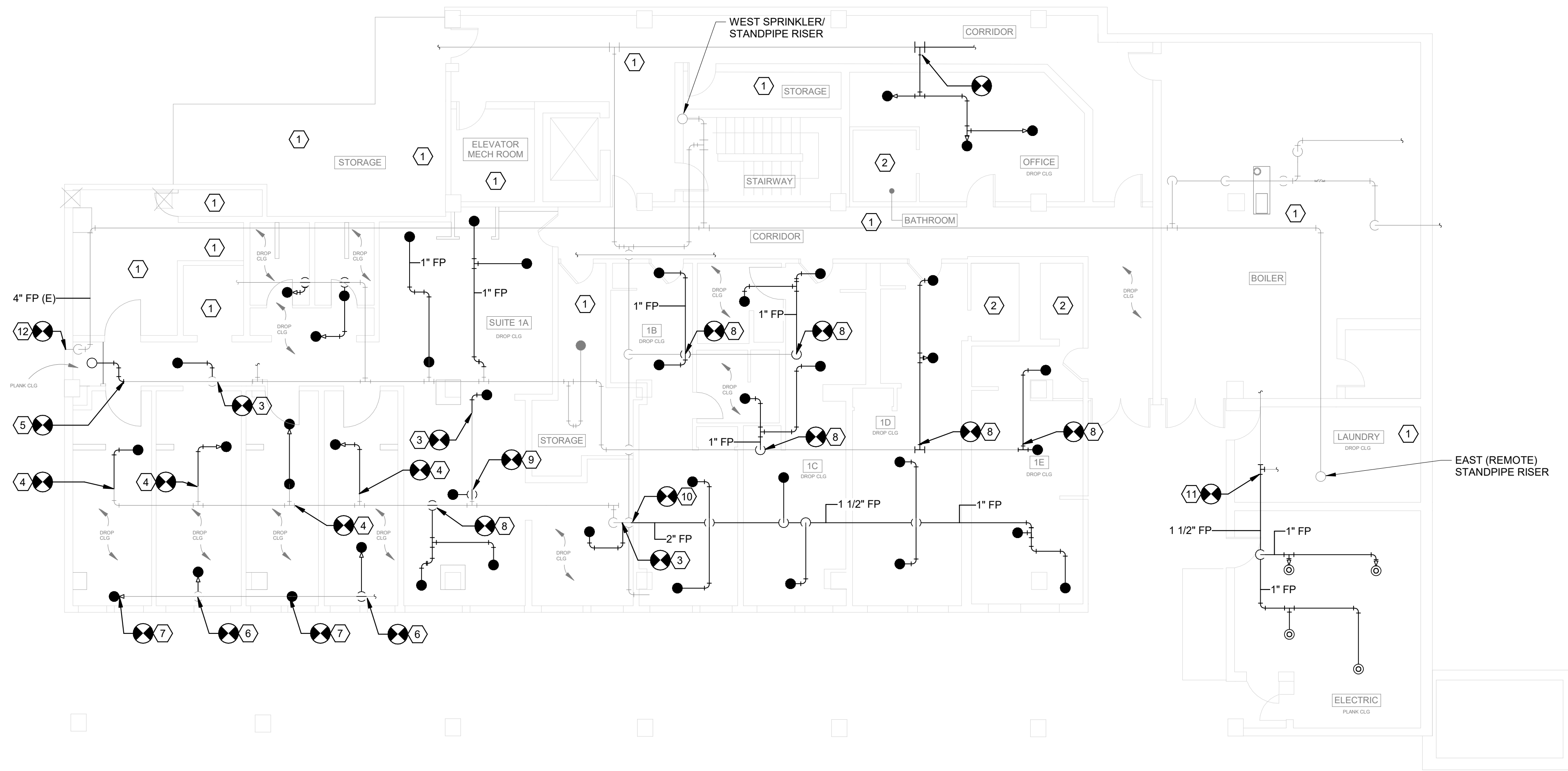
COLLEGE AVE  
301 TURNOVER

|           |                  |
|-----------|------------------|
| DATE:     | JANUARY 23, 2026 |
| FACILITY: | 3927             |
| DESIGN:   | T. JORDAN        |
| DRAWN:    | FHS              |

FIRE  
PROTECTION  
GENERAL NOTES  
AND SYMBOL  
LEGENDS

FP-001  
17839620

ARCHIVE BAR CODE



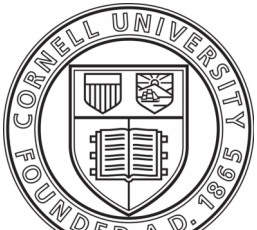
1 GROUND FLOOR RENOVATION PLAN  
SCALE: 1/8" = 1'-0"

### FIRE PROTECTION GENERAL NOTES

- 1.0 PROVIDE SPRINKLER COVERAGE THROUGHOUT GROUND, SECOND, THIRD AND FOURTH FLOORS IN ACCORDANCE WITH NFPA 13 (2016).
- 2.0 PATCH AND SEAL ALL PIPE PENETRATIONS TO PRESERVE FIRE-RATING OF EXISTING WALLS.
- 3.0 ATTACH PIPING TO WALL WHERE POSSIBLE TO AVOID CONCERNS WITH PLANK CEILING.
- 4.0 ALL CLOSET DOORS REMOVED BY CORNELL TO ALLOW SPRINKLER COVERAGE OF SPACE.
- 5.0 ANY HEADS ABANONED ABOVE DROP CEILINGS TO BE REMOVED AND PIPE CAPPED.
- 6.0 CAREFULLY REMOVE AND SALVAGE SUSPENDEED CEILING SYSTEM AS REQUIRED FOR MEPPF WORK. REINSTALL SALVAGED CEILING GRID AND PANELS FOLLOWING COMPLETION OF MEPPF WORK. REPLACE ANY DAMAGED GRID AND CEILING PANELS IN KIND.
- 7.0 PAINT BLACK STEEL PIPE WITH THE FOLLOWING SYSTEM:  
PRIMER: MPI #107  
COAT 1 & 2: MPI 145, GLOSS LEVEL 3  
COLOR TO MATCH ADJACENT FINISH.

### FP-101 KEYED RENOVATION NOTES

- |    |  |
|----|--|
| 1  | ROOM IS FULLY-SPRINKLERED.   |
| 2  | BATHROOM IS UNDER 55 SQ FT. SPRINKLER HEAD IS NOT REQUIRED PER NFPA 13.  |
| 3  | DEMOLISH EXISTING HEAD AND PROVIDE 1" LINE TO NEW SPRINKLER HEAD.  |
| 4  | DEMOLISH EXISTING HEAD AND PROVIDE HEAD IN NEW LOCATION TO PROVIDE COVERAGE TO CLOSET.   |
| 5  | PROVIDE UPRIGHT HEAD AND SPRINKLER PIPING.   |
| 6  | DEMOLISH EXISTING HEAD AND PROVIDE NEW SPRINKLER HEAD IN SAME ORIENTATION.   |
| 7  | DEMOLISH EXISTING HEAD AND PROVIDE NEW SPRINKLER HEAD IN SAME ORIENTATION.   |
| 8  | DEMOLISH EXISTING SPRINKLER HEAD, PROVIDE TWO NEW HEADS.   |
| 9  | PROVIDE NEW HEAD, CONNECT INTO EXISTING 1" LINE.   |
| 10 | DEMOLISH EXISTING PIPE. PROVIDE 2" PIPE IN SAME ORIENTATION AS PREVIOUS.   |
| 11 | PROVIDE SPRINKLER HEADS IN ELECTRIC ROOM. CONNECT INTO EXISTING PIPING SERVING LAUNDRY.  |
| 12 | DEMOLISH EXISTING SIAMESE FDC. PROVIDE 5" STORZ WITH A 4" OUTLET. PATCH AND REFINISH AFFECTED AREA TO MATCH ADJACENT SURFACES. |



FACILITIES  
ENGINEERING  
WWW.FCS.CORNELL.EDU

ARCHITECTURE, AND CIVIL,  
ELECTRICAL, ENVIRONMENTAL,  
AND MECHANICAL ENGINEERING  
201 HUMPHREYS SERVICE BLDG.  
ITHACA, NEW YORK 14853-3701

**WARNING**  
IT IS A VIOLATION OF NEW YORK STATE LAW FOR ANY PERSON, UNLESS ACTING UNDER THE DIRECTION OF A LICENSED ARCHITECT OR ENGINEER, TO ALTER THIS DOCUMENT IN ANY WAY. IF THIS DOCUMENT IS ALTERED, THE ALTERING ARCHITECT OR ENGINEER SHALL AFFIX TO SUCH DOCUMENT THEIR SEAL AND THE NOTATION "ALTERED BY" FOLLOWED BY THEIR SIGNATURE, THE DATE OF SUCH ALTERATION, AND A SPECIFIC DESCRIPTION OF THE ALTERATION.

ARCH/ CIVIL:

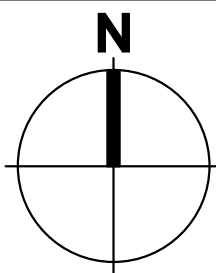
ELECTRICAL:

MECHANICAL:



### REVISIONS

|   |          |                        |
|---|----------|------------------------|
| 1 | 12/12/25 | ISSUE FOR PERMIT       |
| 2 | 01/23/26 | ISSUE FOR CONSTRUCTION |



0' 4' 8' 16'  
SCALE: 1/8" = 1'-0"

301 COLLEGE AVENUE  
ITHACA, NEW YORK 14850

COLLEGE AVE  
301 TURNOVER

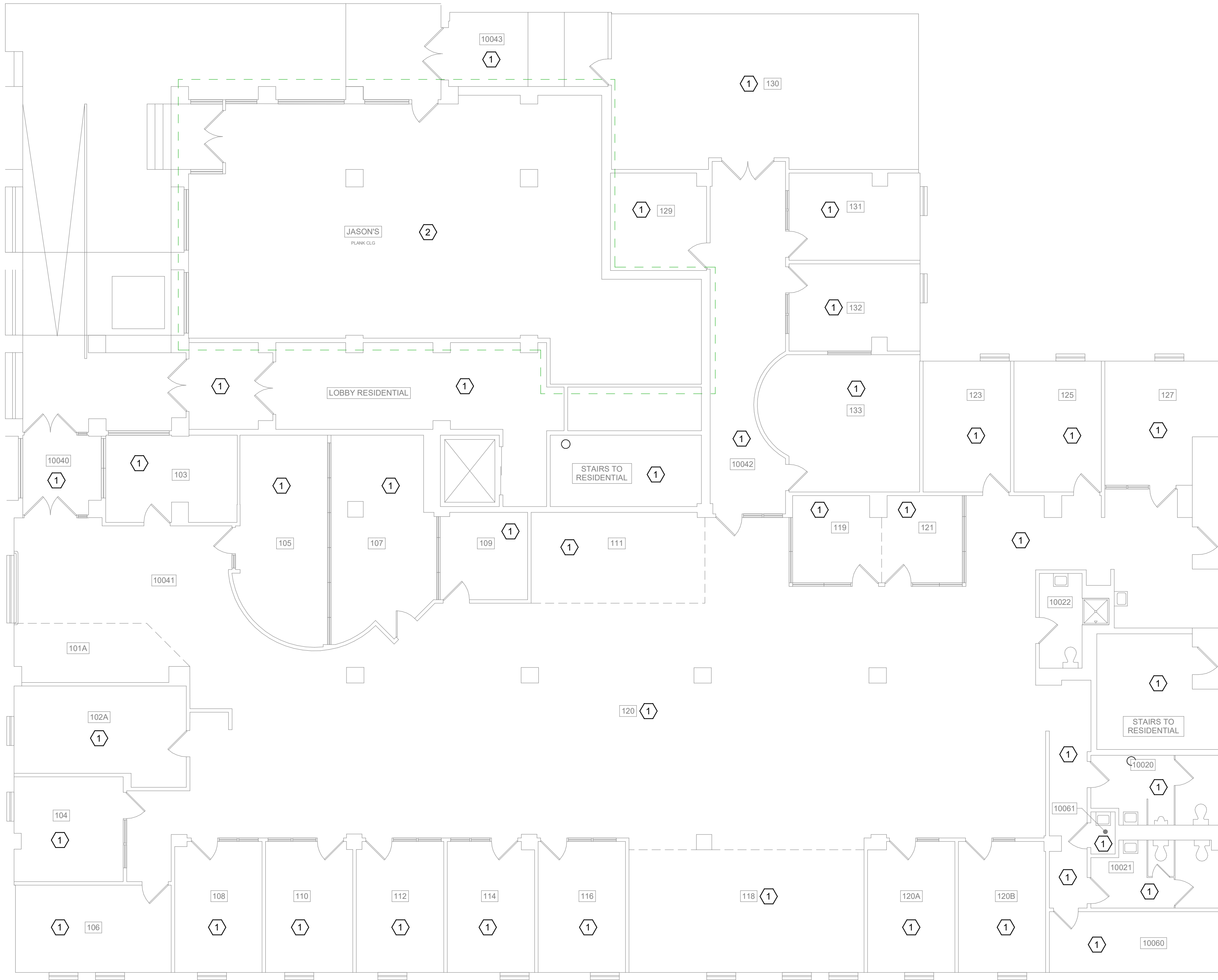
|           |                  |
|-----------|------------------|
| DATE:     | JANUARY 23, 2026 |
| FACILITY: | 3927             |
| DESIGN:   | T. JORDAN        |
| DRAWN:    | FHS              |

FIRE  
PROTECTION  
GROUND FLOOR  
RENOVATION  
PLAN

FP-101  
17839620

ARCHIVE BAR CODE





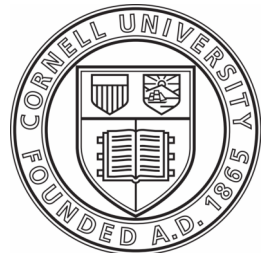
**1 FIRST FLOOR RENOVATION PLAN**  
SCALE: 1/8" = 1'-0"

## FIRE PROTECTION GENERAL NOTES

- 1.0 PROVIDE SPRINKLER COVERAGE THROUGHOUT GROUND, SECOND, THIRD AND FOURTH FLOORS IN ACCORDANCE WITH NFPA 13 (2016).
- 2.0 PATCH AND SEAL ALL PIPE PENETRATIONS TO PRESERVE FIRE-RATING OF EXISTING WALLS.
- 3.0 ATTACH PIPING TO WALL WHERE POSSIBLE TO AVOID CONCERNS WITH PLANK CEILING.
- 4.0 ALL CLOSET DOORS REMOVED BY CORNELL TO ALLOW SPRINKLER COVERAGE OF SPACE.
- 5.0 ANY HEADS ABANONED ABOVE DROP CEILINGS TO BE REMOVED AND PIPE CAPPED.
- 6.0 CAREFULLY REMOVE AND SALVAGE SUSPENDEED CEILING SYSTEM AS REQUIRED FOR MEPPF WORK. REINSTALL SALVAGED CEILING GRID AND PANELS FOLLOWING COMPLETION OF MEPPF WORK. REPLACE ANY DAMAGED GRID AND CEILING PANELS IN KIND.
- 7.0 PAINT BLACK STEEL PIPE WITH THE FOLLOWING SYSTEM:  
PRIMER: MPI #107  
COAT 1 & 2: MPI 145, GLOSS LEVEL 3  
COLOR TO MATCH ADJACENT FINISH.

## FP-102 KEYED RENOVATION NOTES

- | # | NOTES  |
|---|--|
| 1 | ROOM IS FULLY-SPRINKLERED.   |
| 2 | ROOM IS FULLY COVERED. ALL PAINTED SPRINKLER HEADS TO BE REPLACED, ASSUMPTION IS 14. |



**FACILITIES  
ENGINEERING**  
WWW.FCS.CORNELL.EDU

ARCHITECTURE, AND CIVIL,  
ELECTRICAL, ENVIRONMENTAL,  
AND MECHANICAL ENGINEERING

201 HUMPHREYS SERVICE BLDG.  
ITHACA, NEW YORK 14853-3701

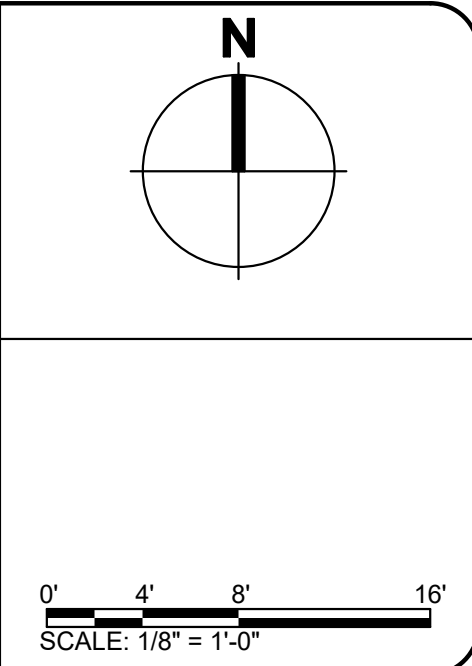
**WARNING**

IT IS A VIOLATION OF NEW YORK STATE LAW FOR ANY PERSON, UNLESS ACTING UNDER THE DIRECTION OF A LICENSED ARCHITECT OR ENGINEER, TO ALTER THIS DOCUMENT IN ANY WAY. IF THIS DOCUMENT IS ALTERED, THE ALTERING ARCHITECT OR ENGINEER SHALL AFFIX TO SUCH DOCUMENT THEIR SEAL AND THE NOTATION "ALTERED BY" FOLLOWED BY THEIR SIGNATURE, THE DATE OF SUCH ALTERATION, AND A SPECIFIC DESCRIPTION OF THE ALTERATION.

ARCH/ CIVIL: *ATR*  
ELECTRICAL: *ATR*  
MECHANICAL: *ATR*



| REVISIONS |                                 |
|-----------|---------------------------------|
| 1         | 12/12/25 ISSUE FOR PERMIT       |
| 2         | 01/23/26 ISSUE FOR CONSTRUCTION |



301 COLLEGE AVENUE  
ITHACA, NEW YORK 14850

**COLLEGE AVE  
301 TURNOVER**

|           |                  |
|-----------|------------------|
| DATE:     | JANUARY 23, 2026 |
| FACILITY: | 3927             |
| DESIGN:   | T. JORDAN        |
| DRAWN:    | FHS              |

**FIRE  
PROTECTION  
FIRST FLOOR  
RENOVATION  
PLAN**

**FP-102**  
17839620

ARCHIVE BAR CODE



| HYDRAULIC INFORMATION    |         |
|--------------------------|---------|
| ROOM DESIGN METHOD       |         |
| ROOM 4C                  |         |
| OCCUPANCY CLASSIFICATION | FM HC-1 |
| DENSITY (GPM/SQFT)       | 0.10    |
| TOTAL HOSE STREAMS       | 250     |
| TOTAL HEADS FLOWING      | 8       |
| K-FACTOR                 | 5.6     |

1 SECOND  
SCALE: 1/8" = 1'-0"

|                          |         |
|--------------------------|---------|
| HYDRAULIC INFORMATION    |         |
| ROOM DESIGN METHOD       |         |
| ROOM 4C                  |         |
| OCCUPANCY CLASSIFICATION | FM HC-1 |
| DENSITY (GPM/SQFT)       | 0.10    |
| TOTAL HOSE STREAMS       | 250     |
| TOTAL HEADS FLOWING      | 8       |
| K-FACTOR                 | 5.6     |

PROVIDE SPRINKLER COVERAGE THROUGHOUT GROUND, SECOND, THIRD AND FOURTH FLOORS IN ACCORDANCE WITH NFPA 13 (2016).

PATCH AND SEAL ALL PIPE PENETRATIONS TO PRESERVE FIRE-RATING OF EXISTING WALLS.

ATTACH PIPING TO WALL WHERE POSSIBLE TO AVOID CONCERNS WITH PLANK CEILING.

ALL CLOSET DOORS REMOVED BY CORNELL TO ALLOW SPRINKLER COVERAGE OF SPACE.

ANY HEADS ABANDONED ABOVE DROP CEILINGS TO BE REMOVED AND PIPE CAPPED.

CAREFULLY REMOVE AND SALVAGE SUSPENDED CEILING SYSTEM AS REQUIRED FOR MEPP WORK. REINSTALL SALVAGED CEILING GRID AND PANELS FOLLOWING COMPLETION OF MEPP WORK. REPLACE ANY DAMAGED GRID AND CEILING PANELS IN KIND.

PAINT BLACK STEEL PIPE WITH THE FOLLOWING SYSTEM:

PRIMER: MPI #107

COAT 1 & 2: MPI 145, GLOSS LEVEL 3

COLOR TO MATCH ADJACENT FINISH.

|   |   |
|---|---|
| 1 | ROOM IS FULLY-SPRINKLERED.  |
| 2 | PROVIDE UPSIZED 2-1/2" SPRINKLER MAIN ROUTED IN THE SAME ORIENTATION AS PREVIOUSLY REMOVED, SMALLER SPRINKLER MAIN. |
| 3 | BATHROOM IS UNDER 55 SQ FT. SPRINKLER HEAD IS NOT REQUIRED PER NFPA 13.   |
| 4 | PROVIDE QUICK RESPONSE SPRINKLER HEAD.  |
| 5 | PROVIDE QUICK RESPONSE SPRINKLER HEAD IN SAME ORIENTATION AS PREVIOUS   |
| 6 | PAINT EXPOSED SPRINKLER PIPING.   |

FACILITIES  
ENGINEERING  
WWW.FCS.CORNELL.EDU

201 HUMPHREYS SERVICE BLDG  
ITHACA, NEW YORK 14853-3701

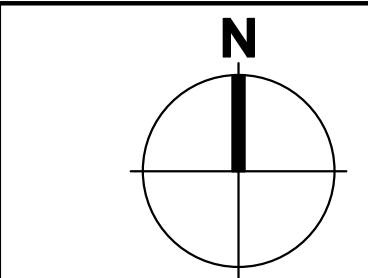
IT IS A VIOLATION OF NEW YORK STATE LAW FOR ANY PERSON, UNLESS ACTING UNDER THE DIRECTION OF A LICENSED ARCHITECT OR ENGINEER, TO ALTER THIS DOCUMENT IN ANY WAY. IF THIS DOCUMENT IS ALTERED, THE ALTERING ARCHITECT OR ENGINEER SHALL AFFIX TO SUCH DOCUMENT THEIR SEAL AND THE NOTATION "ALTERED BY" FOLLOWED BY THEIR SIGNATURE, THE DATE OF SUCH ALTERATION, AND A SPECIFIC DESCRIPTION OF THE ALTERATION.

ELECTRICAL

|  |  |
|--|--|
|  |  |
|--|--|



|   |          |                        |
|---|----------|------------------------|
| 1 | 12/12/25 | ISSUE FOR PERMIT       |
| 2 | 01/23/26 | ISSUE FOR CONSTRUCTION |



0' 4' 8' 16'

SCALE: 1/8" = 1'-0"

301 COLLEGE AVENUE  
ITHACA, NEW YORK 14850

COLLEGE AVE  
301 TURNOVER

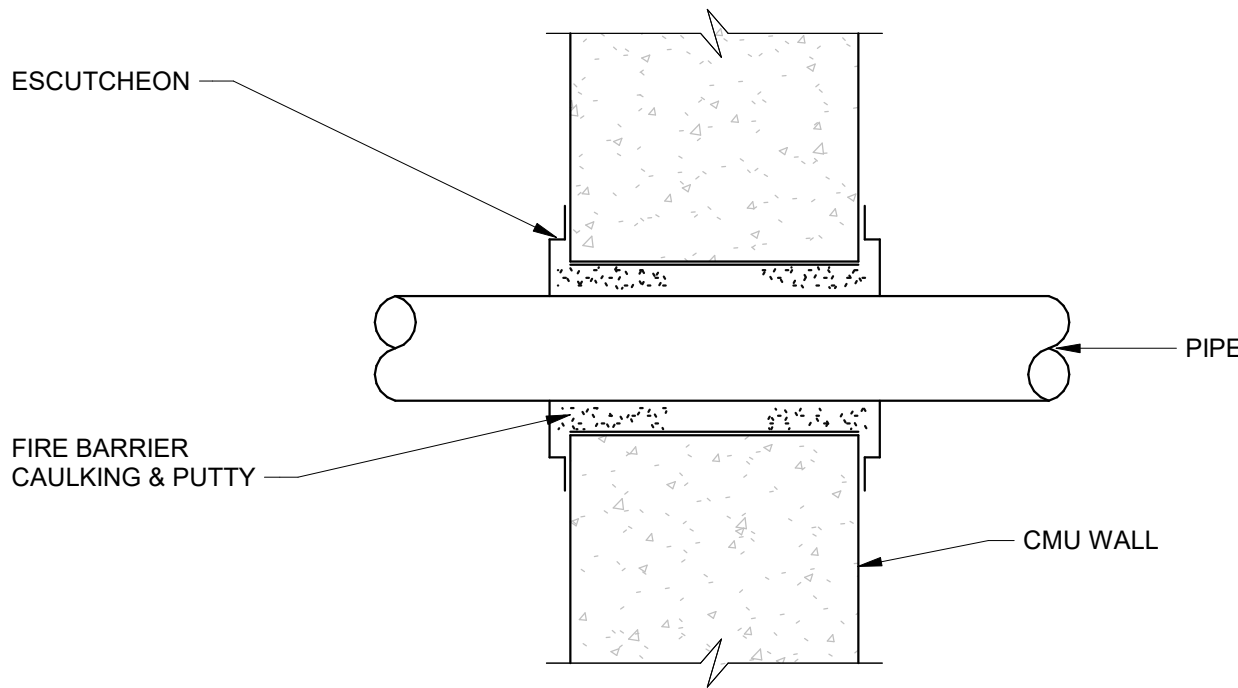
|           |                  |
|-----------|------------------|
| DATE:     | JANUARY 23, 2026 |
| FACILITY: | 3927             |
| DESIGN:   | T. JORDAN        |
| DRAWN:    | FHS              |

FIRE  
PROTECTION  
SECOND  
THROUGH  
FOURTH FLOOR  
RENOVATION  
PLAN

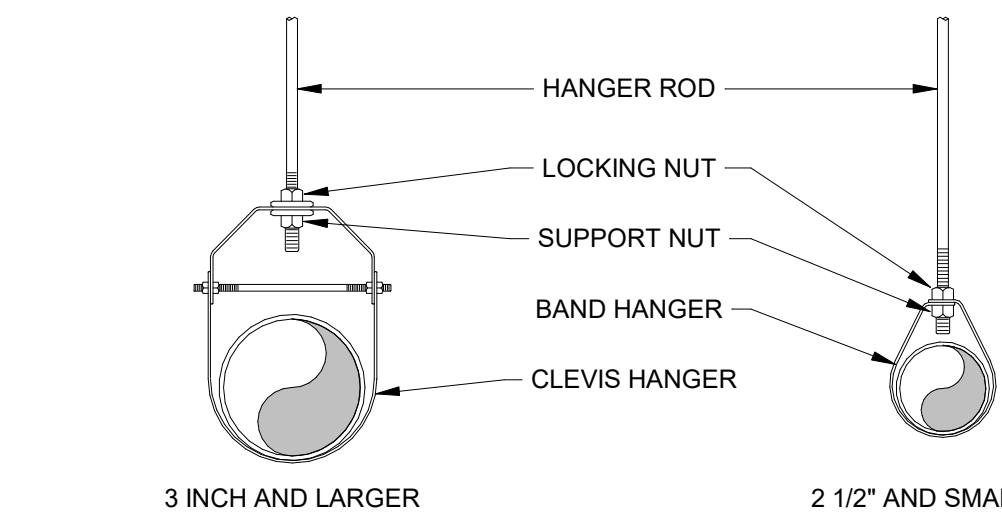
FP-103  
17839620

ARCHIVE BAR CODE





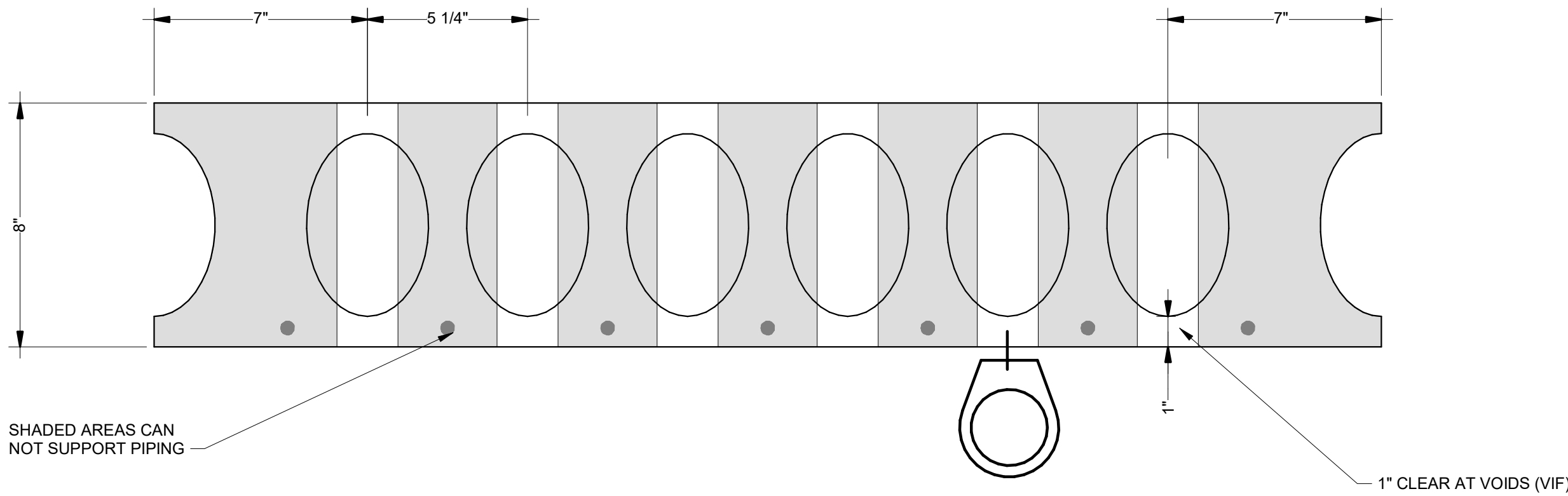
4 PIPE SLEEVE THROUGH EXISTING WALL  
NOT TO SCALE



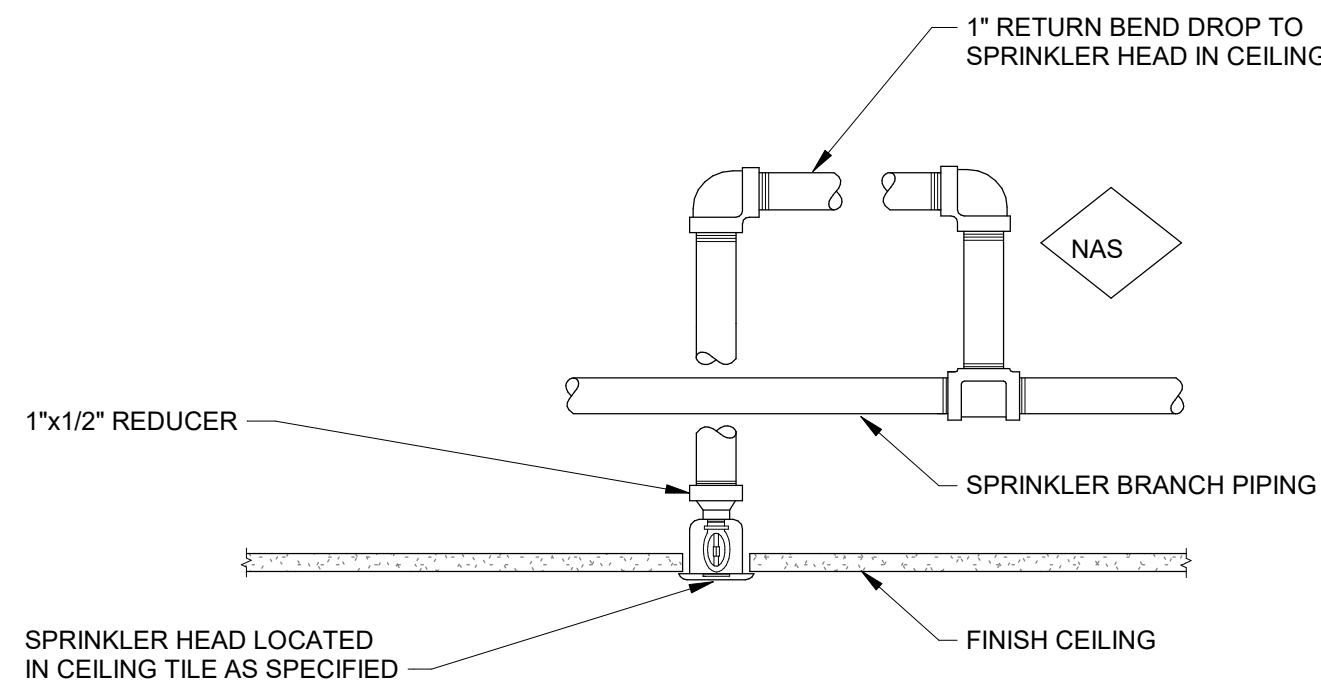
| HANGER ROD SCHEDULE |           | HANGER ROD SPACING |                      |
|---------------------|-----------|--------------------|----------------------|
| PIPE SIZE           | ROD SIZE  | PIPE SIZE          | MAX. ALLOWED SPACING |
| UP TO 2"            | 3/8" DIA. | 1"                 | 7'                   |
| 2 1/2" THRU 3"      | 1/2" DIA. | 1 1/4"             | 8'                   |
| 4" AND 5"           | 5/8"      | 1 1/2"             | 9'                   |
|                     |           | 2"                 | 10'                  |
|                     |           | 2 1/2"             | 11'                  |
|                     |           | 3" THRU 8"         | 12'                  |

DESIGNER'S NOTE: PIPE SIZES SHOULD BE LEFT BLANK.

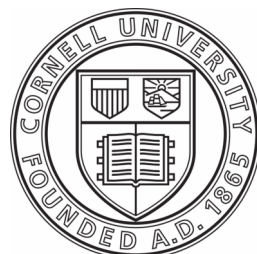
2 SPRINKLER PIPE HANGER INSTALLATION DETAIL  
NOT TO SCALE



3 EXISTING PRECAST PLANK CEILING DETAIL  
NOT TO SCALE



1 CONCEALED SPRINKLER HEAD RETURN BEND DROP  
NOT TO SCALE



FACILITIES  
ENGINEERING  
WWW.FCS.CORNELL.EDU

ARCHITECTURE, AND CIVIL,  
ELECTRICAL, ENVIRONMENTAL,  
AND MECHANICAL ENGINEERING  
201 HUMPHREYS SERVICE BLDG.  
ITHACA, NEW YORK 14853-3701

WARNING  
IT IS A VIOLATION OF NEW YORK STATE LAW FOR  
ANY PERSON, UNLESS ACTING UNDER THE  
DIRECTION OF A LICENSED ARCHITECT OR  
ENGINEER, TO ALTER THIS DOCUMENT IN ANY  
WAY. IF THIS DOCUMENT IS ALTERED, THE  
ALTERING ARCHITECT OR ENGINEER SHALL AFFIX  
TO SUCH DOCUMENT THEIR SEAL AND THE  
NOTATION "ALTERED BY" FOLLOWED BY THEIR  
SIGNATURE, THE DATE OF SUCH ALTERATION, AND  
A SPECIFIC DESCRIPTION OF THE ALTERATION.

ARCH/ CIVIL:   
ELECTRICAL:   
MECHANICAL:



REVISIONS

1 12/12/25 ISSUE FOR PERMIT  
2 01/23/26 ISSUE FOR CONSTRUCTION

301 COLLEGE AVENUE  
ITHACA, NEW YORK 14850

COLLEGE AVE  
301 TURNOVER

DATE: JANUARY 23, 2026  
FACILITY: 3927  
DESIGN: T. JORDAN  
DRAWN: FHS

FIRE  
PROTECTION  
DETAILS

FP-401  
17839620

ARCHIVE BAR CODE



| ELECTRICAL ABBREVIATIONS |                             |
|--------------------------|-----------------------------|
| AC                       | AIR CONDITIONER             |
| AFF                      | ABOVE FINISHED FLOOR        |
| AFG                      | ABOVE FINISHED GRADE        |
| AFI                      | ARC FAULT INTERRUPTER       |
| AMM                      | ADDRESSABLE MONITOR MODULE  |
| AOM                      | ADDRESSABLE OUTPUT MODULE   |
| ARB                      | AUXILIARY RELAY BOARD       |
| ATS                      | AUTOMATIC TRANSFER SWITCH   |
| B                        | BASEBOARD                   |
| BKR                      | BREAKER                     |
| C                        | CONDUIT                     |
| CD                       | CANDELA                     |
| CKT                      | CIRCUIT                     |
| CR                       | CONTROL RELAY               |
| EC                       | ELECTRICAL CONTRACTOR       |
| EMT                      | ELECTRICAL METALLIC TUBING  |
| EPO                      | EMERGENCY POWER OFF STATION |

| ELECTRICAL ABBREVIATIONS |  |
|--------------------------|--|
| FAA                      | FIRE ALARM ANNUNCIATOR PANEL           |
| FACP                     | FIRE ALARM CONTROL PANEL               |
| FSD                      | FIRE SMOKE DAMPER                      |
| GAA                      | GENERATOR ALARM ANNUNCIATOR            |
| GFI                      | GROUND FAULT INTERRUPTER               |
| GND                      | GROUND                                 |
| HP                       | HORSEPOWER                             |
| KW                       | KILOWATT                               |
| LC                       | LIGHTING CONTACTOR                     |
| LFMC                     | LIQUID TIGHT FLEXIBLE METALLIC CONDUIT |
| LTG                      | LIGHTING                               |
| MCB                      | MAIN CIRCUIT BREAKER                   |
| MLO                      | MAIN LUG ONLY                          |
| MTS                      | MANUAL TRANSFER SWITCH                 |
| NAC                      | NOTIFICATION APPLIANCE CIRCUIT         |
| NIC                      | NOT IN CONTRACT                        |
| OE                       | OVERHEAD ELECTRIC                      |

| ELECTRICAL ABBREVIATIONS |                                |
|--------------------------|--------------------------------|
| PC                       | PHOTOCELL                      |
| PM                       | PLUGMOLD                       |
| PP                       | POWER PANEL                    |
| PVC                      | POLYVINYL CHLORIDE CONDUIT     |
| RGS                      | RIGID GALVANIZED STEEL CONDUIT |
| SR                       | SURFACE RACEWAY                |
| ST                       | SHUNT TRIP                     |
| TM                       | THERMAL MAGNETIC               |
| TR                       | TRIM/CASEWORK/WAINSCOTT        |
| TSP                      | TWISTED SHIELDED PAIR          |
| TYP                      | TYPICAL                        |
| UE                       | UNDERGROUND ELECTRIC           |
| UON                      | UNLESS OTHERWISE NOTED         |
| UPS                      | UNINTERRUPTIBLE POWER SUPPLY   |
| V                        | VOLTS                          |
| VA                       | VOLT AMPS                      |
| WP                       | WATERPROOF                     |

| LIGHTING LEGEND |  |
|-----------------|--|
|                 | LIGHT POLE WITH LED LUMINAIRES, REFER TO PLANS FOR NUMBER AND CONFIGURATION OF HEADS   |
|                 | 1'x2' LUMINAIRE  |
|                 | 1'x4' LUMINAIRE  |
|                 | 2'x4' LUMINAIRE  |
|                 | CEILING MOUNTED LUMINAIRE  |
|                 | EM LIGHTING BATTERY UNIT   |
|                 | COMBO EXIT SIGN/EM LIGHTING BATTERY UNIT   |
|                 | SINGLE FACE, WALL MOUNT EXIT SIGN  |
|                 | DOUBLE FACE, WALL MOUNT EXIT SIGN  |
|                 | SINGLE FACE, CEILING MOUNT EXIT SIGN   |
|                 | DOUBLE FACE, CEILING MOUNT EXIT SIGN   |
|                 | WIRELESS OCCUPANCY SENSOR  |
|                 | WIRELESS DAYLIGHT SENSOR   |
|                 | LIGHT SWITCH:<br>3 = 3-WAY SWITCH<br>4 = 4-WAY SWITCH<br>D = DIMMER SWITCH<br>O = WALL SWITCH OCCUPANCY SENSOR<br>V = WALL SWITCH VACANCY SENSOR<br>W = WIRELESS SWITCH<br>S = WIRELESS SCENE SWITCH |
|                 | EMERGENCY LIGHT FIXTURE  |

| LINETYPES LEGEND |                              |
|------------------|------------------------------|
|                  | EXISTING TO REMAIN           |
|                  | DEMOLITION / TO BE RELOCATED |
|                  | TO BE PROVIDED               |
|                  | UNDERGROUND ELECTRIC         |
|                  | UNDERGROUND LIGHTING         |
|                  | UNDERGROUND TELCO            |
|                  | OVERHEAD ELECTRIC            |

| ELECTRICAL LEGEND |   |
|-------------------|---|
|                   | PANELBOARD  |
|                   | JUNCTION BOX  |
|                   | DUPLIX RECEPTACLE:<br>B = INSTALLED IN BASEBOARD<br>TR = INSTALLED IN WOOD TRIM/CASEWORK/WAINSCOTT<br>SR = SURFACE RACEWAY<br>WP = WEATHERPROOF<br>AC = AIR CONDITIONER<br>EM = EMERGENCY |
|                   | DUPLIX RECEPTACLE WITH GFCI PROTECTION  |
|                   | DUPLIX RECEPTACLE WITH AFCI PROTECTION  |
|                   | DOUBLE DUPLIX RECEPTACLE  |
|                   | QUAD RECEPTACLE   |
|                   | SPECIAL RECEPTACLE  |
|                   | MOTOR   |
|                   | MOTOR STARTER   |
|                   | HOMERUN TO PANEL P-1A, CIRCUIT #12. FED FROM 20A - 1P BREAKER IS INTENDED UNLESS NOTED OTHERWISE. RUN GREEN WIRE GROUND FOR ALL CIRCUITS. PROVIDE ONE GROUND PER CIRCUIT.                 |
|                   | HARDWIRED EQUIPMENT CONNECTION  |
|                   | EMERGENCY POWER OFF (EPO)   |
|                   | GROUND ROD ELECTRODE  |
|                   | SAFETY SWITCH (NON-FUSED)   |
|                   | SAFETY SWITCH (FUSED)   |
|                   | CARD READER   |

| IT/ COMMUNICATIONS LEGEND |  |
|---------------------------|--|
|                           | DATA RECEPTACLE<br>X = NUMBER OF CABLES TO BE PROVIDED |
|                           | WIRELESS ACCESS POINT OUTLET- CEILING MTD.             |
|                           | WIRELESS ACCESS POINT OUTLET- WALL MTD.                |

| MOUNTING HEIGHTS       |      |                      |
|------------------------|------|----------------------|
| CARD READER            | 48"  | TOP OF BOX           |
| LIGHT SWITCH           | 48"  | TOP OF BOX           |
| RECEPTACLE             | 18"  | TOP OF BOX           |
| DATA OUTLET            | 18"  | TOP OF BOX           |
| TV OUTLET              | 84"  | TOP OF BOX           |
| PHONE OUTLET           | 48"  | TOP OF BOX           |
| SAFETY SWITCH          | 60"  | CENTERLINE OF HANDLE |
| MOTOR STARTER          | 60"  | CENTERLINE OF HANDLE |
| PANELBOARD             | 72"  | TOP OF PANELBOARD    |
| MANUAL PULL STATION    | 48"  | OPERABLE HANDLE      |
| NOTIFICATION APPLIANCE | 80"  | BOTTOM OF LENS       |
| DOOR HOLD OPEN         |      | COORDINATE IN FIELD  |
| EM BATTERY UNIT        | 96"  | BOTTOM OF UNIT       |
| EM REMOTE UNIT         | 102" | BOTTOM OF UNIT       |
| EXIT SIGN              | 96"  | BOTTOM OF UNIT       |

| FIRE ALARM LEGEND |   |
|-------------------|---|
|                   | FIRE ALARM CONTROL PANEL  |
|                   | BATTERY CABINET   |
|                   | MUXPAD  |
|                   | FIRE ALARM CELLULAR COMMUNICATOR  |
|                   | REMOTE ANNUNCIATOR  |
|                   | NAC PANEL   |
|                   | MANUAL PULL STATION   |
|                   | SMOKE DETECTOR:<br>D = DUCT SMOKE DETECTOR CO = CARBON MONOXIDE<br>R = RELAY BASE<br>BR = BEAM RECEIVER<br>BT = BEAM TRANSMITTER<br>SB = SOUNDER BASE |
|                   | HEAT DETECTOR:<br>F = FIXED TEMPERATURE<br>R = RATE OF RISE<br>R/F = COMBINATION RISE/FIXED TEMPERATURE   |
|                   | CARBON MONOXIDE DETECTOR  |
|                   | WATER FLOW SWITCH   |
|                   | TAMPER SWITCH   |
|                   | ADDRESSABLE MODULE  |
|                   | SUPPRESSION SYSTEM  |
|                   | COMBO AV NOTIFICATION APPLIANCE:<br>XXcd = CANDELA<br>C = CEILING   |
|                   | VISUAL NOTIFICATION APPLIANCE:<br>XXcd = CANDELA<br>C = CEILING   |
|                   | AUDIBLE NOTIFICATION APPLIANCE  |
|                   | MAGNETIC DOOR HOLDER  |

| ELECTRICAL SCOPE OF WORK |   |
|--------------------------|---|
| 1.0                      | PROVIDE CODE-COMPLIANT UPGRADES TO THE EXISTING FIRE ALARM SYSTEM. EXISTING DEVICE LOCATIONS SHOWN. ADD NEW INITIATING AND NOTIFICATION DEVICES WHERE REQUIRED, AND REPROGRAM THE EXISTING CELLULAR DIALER TO REPORT TO CORNELL'S CENTRAL MONITORING STATION AT BARTON HALL IN ACCORDANCE WITH NFPA 72. |

| GENERAL ELECTRICAL NOTES |  |
|--------------------------|--|
| 1.0                      | ELECTRICAL SCHEMATICS INDICATED ON CONTRACT DOCUMENTS ARE DIAGRAMMATIC. IT IS NOT THE INTENT TO SHOW EXACT OR MOST EFFICIENT ROUTING. VERIFY ALL DIMENSIONS AND FIELD CONDITIONS ON SITE. ANY CONFLICTS BETWEEN CONSTRUCTION DOCUMENTS AND FIELD CONDITIONS SHALL BE BROUGHT TO CORNELL'S PROJECT MANAGER FOR RESOLUTION BEFORE WORK PROCEEDS. |
| 2.0                      | ASSURE PUBLIC AND WORKER SAFETY AT ALL TIMES. PROTECT ADJOINING AREAS FROM DAMAGE AND DUST. REMOVE ALL DEBRIS FROM SITE AND DISPOSE OF WASTE MATERIAL IN A SAFE MANNER. KEEP THE PREMISES FREE OF DEBRIS FROM THE EXECUTION OF WORK. DELIVER A FINAL PRODUCT THAT IS CLEAN AND OPERABLE.   |
| 3.0                      | FIRE STOP ELECTRICAL PENETRATIONS THROUGH FIRE RATED WALLS AND/OR FLOORS WITH MATERIAL EQUAL IN RATING TO THE CONSTRUCTION OF THE MATERIAL PENETRATED.   |
| 4.0                      | WORK SHALL BE COMPLETED AS SPECIFIED AND INDICATED ON CONTRACT DOCUMENTS. ANY SUGGESTED ALTERNATE MANUFACTURER OR METHOD OF INSTALLATION SHALL BE SUBMITTED TO PROJECT ENGINEER FOR APPROVAL PRIOR TO ORDERING ANY MATERIALS OR COMMENCING EXECUTION OF WORK.  |

|      |  |
|------|--|
| 5.0  | GROUNDING SHALL BE IN STRICT ACCORDANCE WITH NEC ARTICLE 250. PROVIDE EQUIPMENT GROUND CONDUCTOR WITH EACH BRANCH CIRCUIT INDICATED ON CONTRACT DOCUMENTS. EQUIPMENT GROUND CONDUCTOR SHALL BE ROUTED WITH ASSOCIATED PHASE CONDUCTORS.  |
| 6.0  | PROVIDE A NEW TYPED PANELBOARD DIRECTORY FOR EACH PANELBOARD. LABEL ALL NEW DEVICE FACEPLATES WITH SOURCE AND CIRCUIT NUMBER. PROVIDE PERMANENT LABEL ON SWITCHING DEVICES INDICATING EQUIPMENT SERVICE AND INVENTORY NUMBERS. COORDINATE EQUIPMENT INVENTORY NUMBERS WITH CORNELL UNIVERSITY'S MECHANICAL SHOP, 607-255-8667. |
| 7.0  | CIRCUITS RATED 20-AMP, 120 VOLT SHALL CONTAIN SEPARATE NEUTRAL CONDUCTORS.   |
| 8.0  | CONDUCTORS SHALL BE A MINIMUM OF 12AWG, STRANDED COPPER, 600VAC, 90 DEGREE C, TYPE THHN/THWN-2 FOR DRY AREAS AND XHHW-2 FOR WET AREAS.   |
| 9.0  | CONDUITS SHALL BE A MINIMUM OF 3/4 INCHES DIAMETER. CONDUITS SHALL BE ELECTRICAL METALLIC TUBING (EMT) AND SURFACE MOUNTED UNLESS NOTED OTHERWISE.   |
| 10.0 | AIC RATING OF NEW CIRCUIT BREAKERS SHALL MATCH RATING OF RESPECTIVE PANELBOARD. SIZE AS INDICATED.   |
| 11.0 | PROVIDE PULL STRING THROUGH NEW CONDUIT AND BOXES. PROVIDE SUPPORT HANGERS FOR CONDUIT AS NEEDED.  |
| 12.0 | INSTALL RACEWAY SYSTEMS ENSURING PROPER ACCESS TO EQUIPMENT AND DEVICES AND WITH SUFFICIENT SPACE TO PERFORM ROUTINE MAINTENANCE AND REPAIR. RACEWAYS THAT ARE NOT INSTALLED WITH THIS REQUIREMENT IN MIND SHALL BE RELOCATED AT NO EXPENSE TO THE UNIVERSITY UNTIL DEFICIENCIES ARE CORRECTED.                                |
| 13.0 | CONTRACTOR SHALL ROUTE CONDUIT AND WIRING WITHIN WALLS WHERE FEASIBLE. UNLESS OTHERWISE NOTED OR REQUIRED BY EXISTING CONDITIONS. SURFACE-MOUNTED CONDUIT IS ACCEPTABLE IN UNFINISHED SPACES. ANY CONDUIT EXPOSED IN FINISHED SPACES SHALL BE PAINTED TO MATCH EXISTING ADJACENT FINISHES.                                     |

| GENERAL ELECTRICAL DEMOLITION NOTES |  |
|-------------------------------------|--|
| 1.0                                 | ELECTRICAL EQUIPMENT SHOWN DASHED ON DEMOLITION DRAWINGS, INCLUDING ASSOCIATED ANCHORS, SUPPORTS, STRAPS, BOXES, FITTINGS, AND OTHER APPURTENANCES NOT SHOWN, SHALL BE DISCONNECTED AND REMOVED. REMOVE ASSOCIATED BRANCH CIRCUITRY TO SOURCE, UNLESS NOTED OTHERWISE. |
| 2.0                                 | REUSE EXISTING RACEWAYS AND DEVICE BACKBOXES WHEN INSTALLATION OF NEW SYSTEM COMPONENTS DOES NOT INTERFERE.  |
| 3.0                                 | PROVIDE JUNCTION BOXES, RACEWAYS, AND WIRING TO MODIFY/EXTEND EXISTING SYSTEMS AND CIRCUITS FED DOWNSTREAM OF ELECTRICAL EQUIPMENT SHOWN TO BE DEMOLISHED.   |
| 4.0                                 | CUT DEMOLISHED CONDUITS INSTALLED THRU WALLS AND FLOORS FLUSH WITH THE SURFACE AND PATCH PENETRATIONS (FIRES TOP IF LOCATED ON A FIRE RATED SURFACE). PATCH AND PAINT SURFACES IN EXPOSED AREAS TO MATCH SURROUNDING MATERIALS, FINISHES, AND COLORS.                  |
| 5.0                                 | PROVIDE BLANK COVERPLATES ON UNUSED BACKBOXES REMAINING FROM DEMOLITION NOT SPECIFIED TO BE INFILLED.  |
| 6.0                                 | EXISTING EQUIPMENT SHOWN TO REMAIN SHALL BE PROTECTED DURING CONSTRUCTION.   |

| FIRE ALARM GENERAL TESTING NOTES |   |
|----------------------------------|---|
| 1.0                              | PERFORM TESTING OF THE UPGRADED FIRE ALARM SYSTEM IN ACCORDANCE WITH NFPA 72 REQUIREMENTS, INCLUDING VERIFICATION OF ALL INITIATING AND NOTIFICATION DEVICES, CONTROL EQUIPMENT, CIRCUITS, AND SIGNAL TRANSMISSION. COORDINATE ALL TESTING, INSPECTIONS, AND FINAL ACCEPTANCE WITH THE AUTHORITY HAVING JURISDICTION (AHJ) AND THE FIRE MARSHAL'S OFFICE TO ENSURE COMPLIANCE AND APPROVAL. |





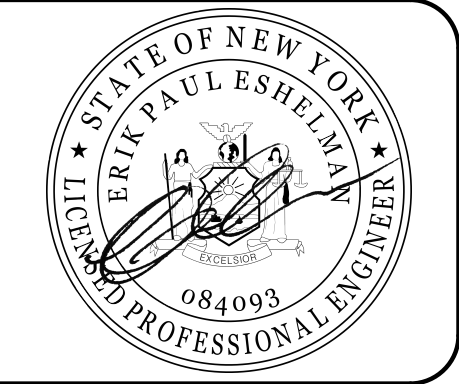
**FACILITIES  
ENGINEERING**  
WWW.FCS.CORNELL.EDU

ARCHITECTURE, AND CIVIL,  
ELECTRICAL, ENVIRONMENTAL,  
AND MECHANICAL ENGINEERING

201 HUMPHREYS SERVICE BLDG.  
ITHACA, NEW YORK 14853-3701

**WARNING**  
IT IS A VIOLATION OF NEW YORK STATE LAW FOR ANY PERSON, UNLESS ACTING UNDER THE DIRECTION OF A LICENSED ARCHITECT OR ENGINEER, TO ALTER THIS DOCUMENT IN ANY WAY. IF THIS DOCUMENT IS ALTERED, THE ALTERING ARCHITECT OR ENGINEER SHALL AFFIX TO SUCH DOCUMENT THEIR SEAL AND THE NOTATION "ALTERED BY" FOLLOWED BY THEIR SIGNATURE, THE DATE OF SUCH ALTERATION, AND A SPECIFIC DESCRIPTION OF THE ALTERATION.

|              |   |
|--------------|---|
| ARCH/ CIVIL: |   |
| ELECTRICAL:  |  |
| MECHANICAL:  |  |



| REVISIONS |          |                        |
|-----------|----------|------------------------|
| 1         | 12/12/25 | ISSUE FOR PERMIT       |
| 2         | 01/23/26 | ISSUE FOR CONSTRUCTION |

301 COLLEGE AVENUE  
ITHACA, NEW YORK 14850

COLLEGE AVE  
301 TURNOVER

|           |                  |
|-----------|------------------|
| DATE:     | JANUARY 23, 2026 |
| FACILITY: | 3927             |
| DESIGN:   | M. SCHOLENO      |
| DRAWN:    | MPs              |

GENERAL NOTES  
AND SYMBOL  
LEGENDS

E-001  
17839620

ARCHIVE BAR CODE





E-101  
17839620

ARCHIVE BAR CODE





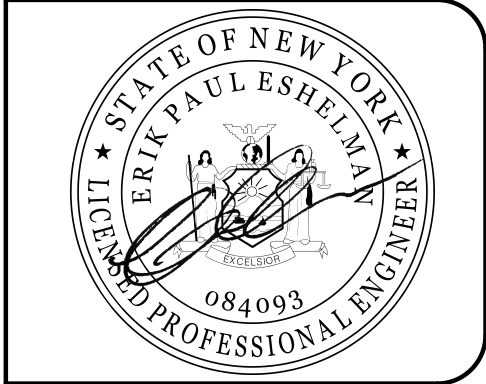
|   |   |
|---|---|
| 1 | REPROGRAM EXISTING FIRE ALARM CELLULAR DIALER TO COMMUNICATE WITH CORNELL PUBLIC SAFETY AT BARTON HALL. VERIFY PROPER OPERATION PER NFPA 72 AND CORNELL STANDARDS.  |
| 2 | PROVIDE FIRE ALARM NOTIFICATION DEVICE AS INDICATED AND TIE TO NEAREST NOTIFICATION CIRCUIT PER NFPA 72. ALL VISIBLE NOTIFICATION APPLIANCES SHALL BE SYMBOLICALLY IDENTIFIED IN ACCORDANCE WITH NFPA 72 AND THE NEW YORK STATE BUILDING CODE REQUIREMENTS. MATCH EXISTING WIRING TYPE. ALL NEW WORK SHALL BE INSTALLED IN 3/4" EMT CONDUIT UNLESS NOTED OTHERWISE. |
| 3 | PROVIDE FIRE ALARM PULL STATION WITHIN 5' OF ENTRANCE AND CONNECT TO NEAREST INITIATION CIRCUIT FROM THE FIRE ALARM PANEL. MATCH EXISTING WIRING TYPE. ALL NEW WORK SHALL BE INSTALLED IN 3/4" EMT CONDUIT UNLESS NOTED OTHERWISE.  |
| 4 | PROVIDE A SMOKE DETECTOR PER NYS FIRE CODE AND NFPA 72, AND CONNECT TO THE NEAREST INITIATING CIRCUIT. COORDINATE DEVICE TYPE AND LOCATION WITH THE A/E AND ENGINEER OF RECORD. MATCH EXISTING WIRING TYPE. ALL NEW WORK SHALL BE INSTALLED IN 3/4" EMT CONDUIT UNLESS NOTED OTHERWISE.   |

The logo for Cornell University Facilities Engineering. It features the Cornell University seal at the top, which is a circular emblem with the text "CORNELL UNIVERSITY" and "FOUNDED 1826". Below the seal, the words "FACILITIES ENGINEERING" are written in a large, bold, serif font. Underneath that, the website "WWW.FCS.CORNELL.EDU" is displayed in a smaller, sans-serif font. The bottom section of the logo is a dark blue rectangle containing the text "ARCHITECTURE, AND CIVIL, ELECTRICAL, ENVIRONMENTAL, AND MECHANICAL ENGINEERING" in white, all-caps, sans-serif font. At the very bottom, in a lighter blue rectangle, is the address "201 HUMPHREYS SERVICE BLDG. ITHACA, NEW YORK 14853-3701" in white, all-caps, sans-serif font.

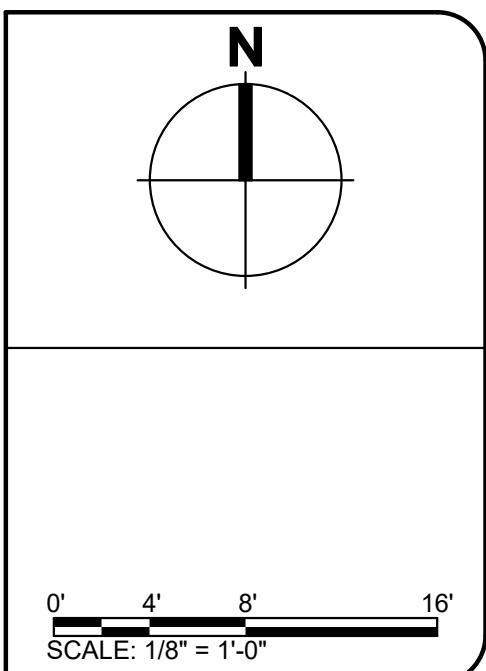
**WARNING**

IT IS A VIOLATION OF NEW YORK STATE LAW FOR ANY PERSON, UNLESS ACTING UNDER THE DIRECTION OF A LICENSED ARCHITECT OR ENGINEER, TO ALTER THIS DOCUMENT IN ANY WAY. IF THIS DOCUMENT IS ALTERED, THE ALTERING ARCHITECT OR ENGINEER SHALL AFFIX TO SUCH DOCUMENT THEIR SEAL AND THE NOTATION "ALTERED BY" FOLLOWED BY THEIR SIGNATURE, THE DATE OF SUCH ALTERATION, AND A SPECIFIC DESCRIPTION OF THE ALTERATION.

ARCH/ CIVIL: \_\_\_\_\_  
ELECTRICAL: ETR  
MECHANICAL: MF



|   |          |                        |
|---|----------|------------------------|
| 1 | 12/12/25 | ISSUE FOR PERMIT       |
| 2 | 01/23/26 | ISSUE FOR CONSTRUCTION |



301 COLLEGE AVENUE  
ITHACA, NEW YORK 14850

COLLEGE AVE  
301 TURNOVER

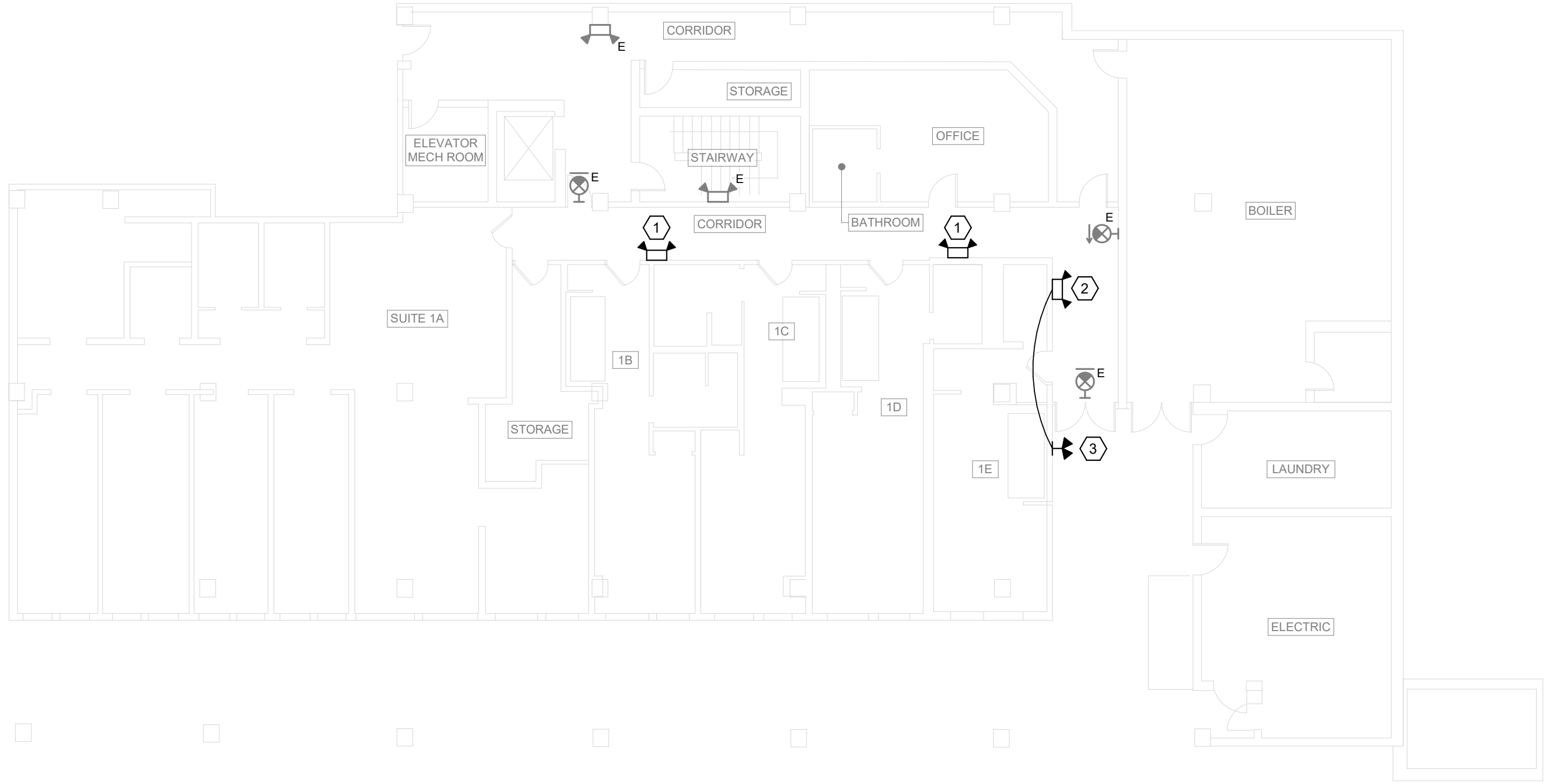
|           |                  |
|-----------|------------------|
| DATE:     | JANUARY 23, 2026 |
| FACILITY: | 3927             |
| DESIGN:   | M. SCHOLENO      |
| DRAWN:    | MPS              |

# FIRE ALARM FIRST FLOOR RENOVATION PLAN

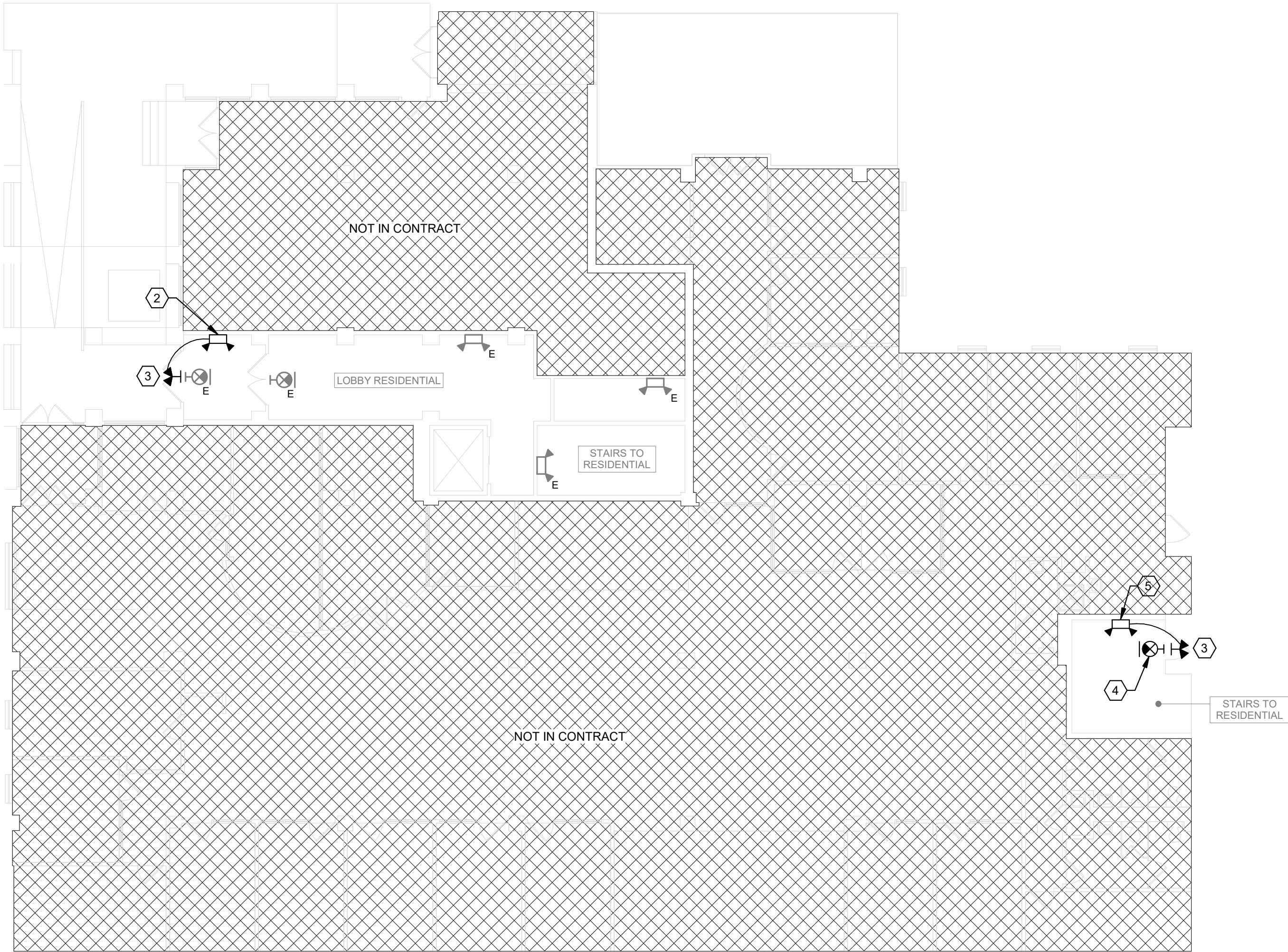
E-102  
17839620

ARCHIVE BAR CODE





2 GROUND FLOOR REAR EM LIGHTING AND EXIT SIGN PLAN  
SCALE: 3/32" = 1'-0"



1 FIRST FLOOR EM LIGHTING AND EXIT SIGN PLAN  
SCALE: 3/32" = 1'-0"

E-201 KEYED RENOVATION NOTES

- 1 PROVIDE A LED, BATTERY-OPERATED EMERGENCY LIGHTING UNIT: SURE-LITES MODEL SEL25-SD WITH SELF-DIAGNOSTICS. CONNECT TO THE UNSWITCHED LIGHTING BRANCH CIRCUIT SERVING THE SPACE THE UNIT IS INSTALLED AND CIRCUIT WITH 2#12, 1#12G, 3/4" EMT FOR POWER SENSING AND BATTERY CHARGING. MATCH ELEVATION OF ADJACENT EMERGENCY LIGHTING UNITS. CONCEAL BRANCH CIRCUITRY ABOVE FINISHED CEILINGS AND WALLS.
- 2 PROVIDE A LED, BATTERY-OPERATED EMERGENCY LIGHTING UNIT WITH REMOTE CAPABILITY: SURE-LITES MODEL SEL25-R10-SD WITH SELF-DIAGNOSTICS. CONNECT TO THE UNSWITCHED LIGHTING BRANCH CIRCUIT SERVING THE SPACE THE UNIT IS INSTALLED AND CIRCUIT WITH 2#12, 1#12G, 3/4" EMT FOR POWER SENSING AND BATTERY CHARGING. MATCH ELEVATION OF ADJACENT EMERGENCY LIGHTING UNITS. CONCEAL BRANCH CIRCUITRY ABOVE FINISHED CEILINGS AND WALLS.
- 3 PROVIDE A LED, BATTERY-OPERATED EXIT DISCHARGE EMERGENCY LIGHTING UNIT: SURE-LITES MODEL SRP25DBK AND CONNECT TO THE EMERGENCY LIGHTING UNIT AS SHOWN WITH 2#12, 1#12G, 3/4" EMT. COREDRILL EXTERIOR MASONRY WALL AND PATCH WITH WEATHERPROOF GROUT TO MATCH SURROUNDING SURFACES. INSTALL UNIT A MINIMUM OF 7'-6" ABOVE FINISHED GRADE.
- 4 PROVIDE A LED, BATTERY-OPERATED EXIT SIGN: SURE-LITES MODEL LPX7RSF. CONNECT TO THE UNSWITCHED LIGHTING BRANCH CIRCUIT SERVING THE SPACE THE UNIT IS INSTALLED AND CIRCUIT WITH 2#12, 1#12G, 3/4" EMT FOR POWER SENSING AND BATTERY CHARGING. CONCEAL BRANCH CIRCUITRY ABOVE FINISHED CEILINGS AND WALLS.
- 5 REPLACE THE EMERGENCY LIGHTING UNIT AT THIS LOCATION WITH A SURE-LITES MODEL SEL25-R10-SD WITH SELF-DIAGNOSTICS. MODIFY/EXTEND EXISTING LIGHTING BRANCH CIRCUITRY TO NEW UNIT.



FACILITIES  
ENGINEERING  
WWW.FCS.CORNELL.EDU

ARCHITECTURE, AND CIVIL,  
ELECTRICAL, ENVIRONMENTAL,  
AND MECHANICAL ENGINEERING

201 HUMPHREYS SERVICE BLDG.  
ITHACA, NEW YORK 14853-3701

WARNING

IT IS A VIOLATION OF NEW YORK STATE LAW FOR ANY PERSON, UNLESS ACTING UNDER THE DIRECTION OF A LICENSED ARCHITECT OR ENGINEER, TO ALTER THIS DOCUMENT IN ANY WAY. IF THIS DOCUMENT IS ALTERED, THE ALTERING ARCHITECT OR ENGINEER SHALL AFFIX TO SUCH DOCUMENT THEIR SEAL AND THE NOTATION "ALTERED BY" FOLLOWED BY THEIR SIGNATURE, THE DATE OF SUCH ALTERATION, AND A SPECIFIC DESCRIPTION OF THE ALTERATION.

ARCH/ CIVIL:

ELECTRICAL: *ATB*

MECHANICAL: *JS*



REVISIONS

|   |          |                        |
|---|----------|------------------------|
| 1 | 12/12/25 | ISSUE FOR PERMIT       |
| 2 | 01/23/26 | ISSUE FOR CONSTRUCTION |



0' 4' 8' 12' 24'

SCALE: 3/32" = 1'-0"

301 COLLEGE AVENUE  
ITHACA, NEW YORK 14850

COLLEGE AVE  
301 TURNOVER

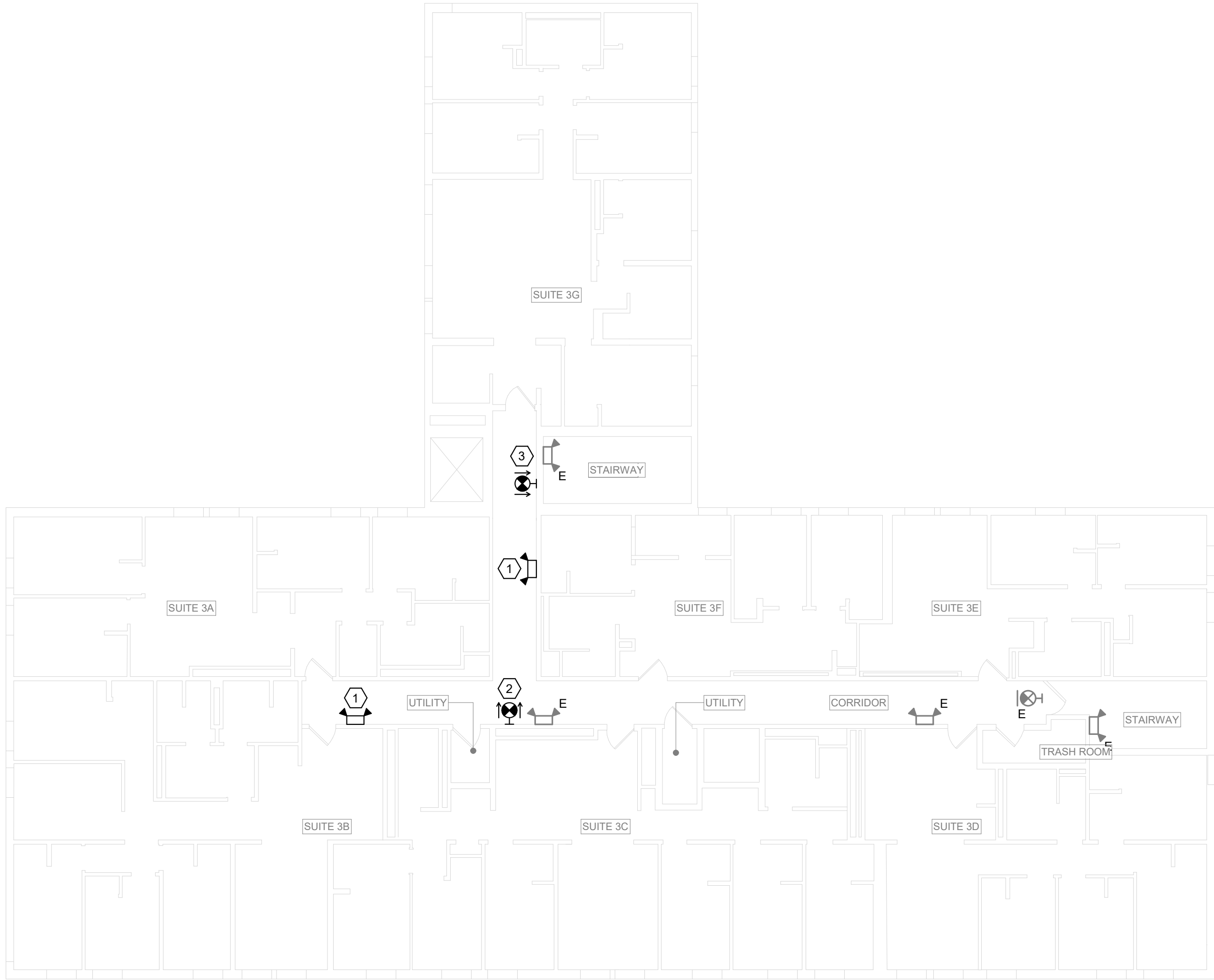
|           |                  |
|-----------|------------------|
| DATE:     | JANUARY 23, 2026 |
| FACILITY: | 3927             |
| DESIGN:   | C. WAYMAN        |
| DRAWN:    | CMW              |

GROUND FLOOR  
AND FIRST  
FLOOR EM AND  
EXIT SIGN PLANS

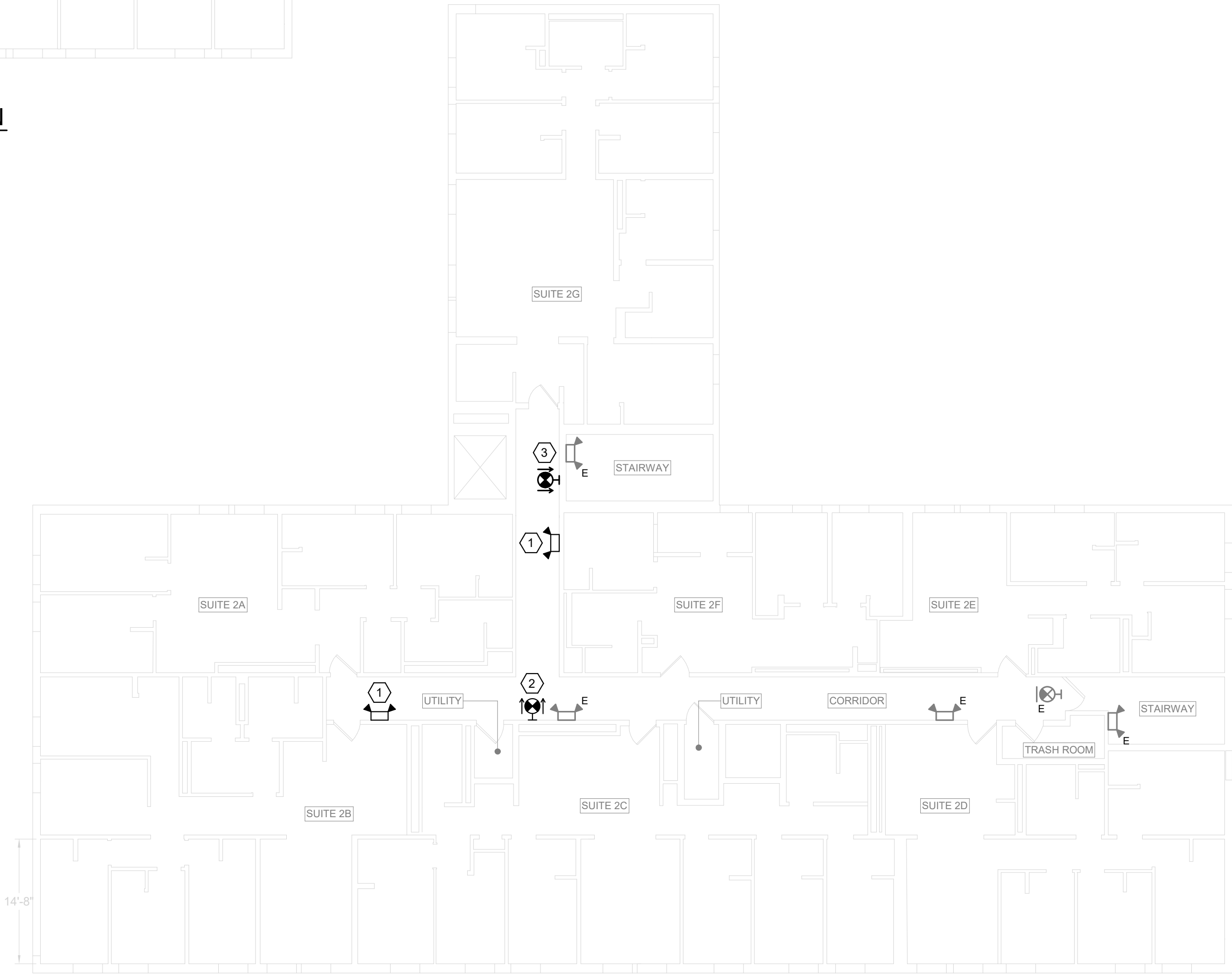
E-201  
17839620

ARCHIVE BAR CODE





2 THIRD FLOOR EM LIGHTING AND EXIT SIGN PLAN  
SCALE: 3/32" = 1'-0"



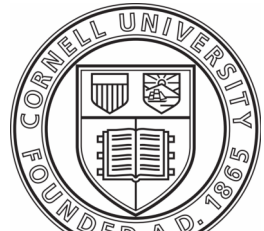
1 SECOND FLOOR EM LIGHTING AND EXIT SIGN PLAN  
SCALE: 3/32" = 1'-0"

- # E-202 KEYED RENOVATION NOTES
- 1

PROVIDE A LED, BATTERY-OPERATED EMERGENCY LIGHTING UNIT: SURE-LITES MODEL SEL25-SD WITH SELF-DIAGNOSTICS. CONNECT TO THE UNSWITCHED LIGHTING BRANCH CIRCUIT SERVING THE SPACE THE UNIT IS INSTALLED AND CIRCUIT WITH 2#12, 1#12G, 3/4" EMT FOR POWER SENSING AND BATTERY CHARGING. MATCH ELEVATION OF ADJACENT EMERGENCY LIGHTING UNITS. CONCEAL BRANCH CIRCUITRY ABOVE FINISHED CEILINGS AND WALLS.
- 2

PROVIDE A DOUBLE-SIDED, LED, BATTERY-OPERATED EXIT SIGN: SURE-LITES MODEL LPX7RSF. CONNECT TO THE UNSWITCHED LIGHTING BRANCH CIRCUIT SERVING THE SPACE THE UNIT IS INSTALLED AND CIRCUIT WITH 2#12, 1#12G, 3/4" EMT FOR POWER SENSING AND BATTERY CHARGING. CONCEAL BRANCH CIRCUITRY ABOVE FINISHED CEILINGS AND WALLS.
- 3

REPLACE THE WALL-MOUNTED EXIT SIGN AT THIS LOCATION WITH A SURE-LITES DOUBLE-SIDED, LED, BATTERY-OPERATED EXIT SIGN: SURE LITES MODEL LPX7RSF. MODIFY/EXTEND EXISTING LIGHTING BRANCH CIRCUITRY TO NEW UNIT.



FACILITIES  
ENGINEERING  
WWW.FCS.CORNELL.EDU

ARCHITECTURE, AND CIVIL,  
ELECTRICAL, ENVIRONMENTAL,  
AND MECHANICAL ENGINEERING

201 HUMPHREYS SERVICE BLDG.  
ITHACA, NEW YORK 14853-3701

WARNING

IT IS A VIOLATION OF NEW YORK STATE LAW FOR ANY PERSON, UNLESS ACTING UNDER THE DIRECTION OF A LICENSED ARCHITECT OR ENGINEER, TO ALTER THIS DOCUMENT IN ANY WAY. IF THIS DOCUMENT IS ALTERED, THE ALTERING ARCHITECT OR ENGINEER SHALL AFFIX TO SUCH DOCUMENT THEIR SEAL AND THE NOTATION "ALTERED BY" FOLLOWED BY THEIR SIGNATURE, THE DATE OF SUCH ALTERATION, AND A SPECIFIC DESCRIPTION OF THE ALTERATION.

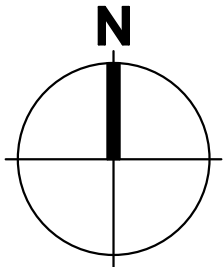
ARCH/ CIVIL:

ELECTRICAL: *ATB*

MECHANICAL: *JS*

REVISIONS

|   |          |                        |
|---|----------|------------------------|
| 1 | 12/12/25 | ISSUE FOR PERMIT       |
| 2 | 01/23/26 | ISSUE FOR CONSTRUCTION |



0' 4' 8' 12' 24'

SCALE: 3/32" = 1'-0"

301 COLLEGE AVENUE  
ITHACA, NEW YORK 14850

COLLEGE AVE  
301 TURNOVER

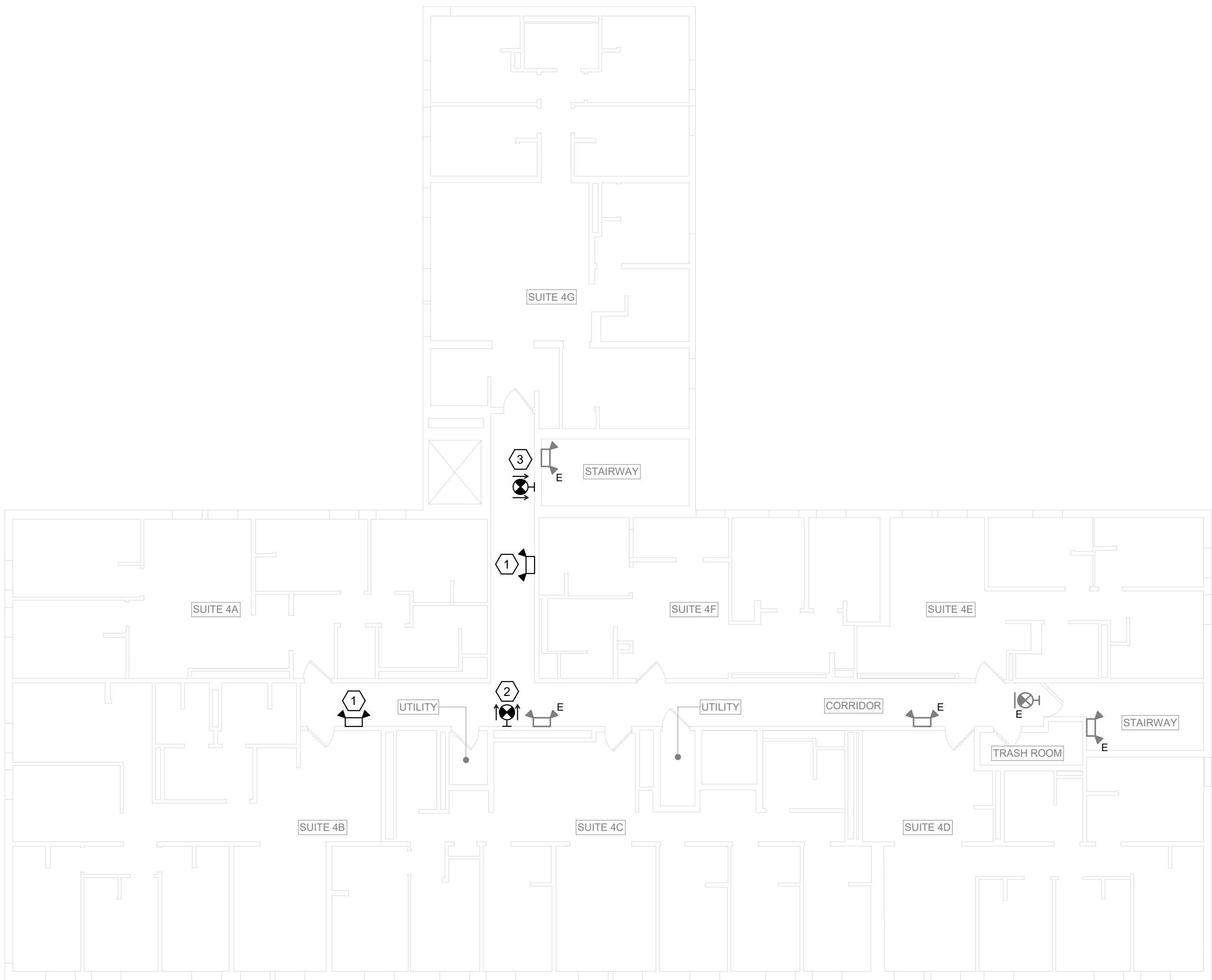
|           |                  |
|-----------|------------------|
| DATE:     | JANUARY 23, 2026 |
| FACILITY: | 3927             |
| DESIGN:   | C. WAYMAN        |
| DRAWN:    | CMW              |

2ND AND 3RD  
FLOOR EM  
LIGHTING AND  
EXIT SIGN PLANS

E-202  
17839620

ARCHIVE BAR CODE





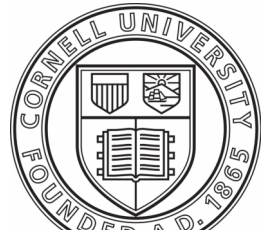
1 4TH FLOOR EM LIGHTING AND EXIT SIGN PLAN  
SCALE: 3/32" = 1'-0"

- # E-203 KEYED RENOVATION NOTES
- 1

PROVIDE A LED, BATTERY-OPERATED EMERGENCY LIGHTING UNIT: SURE-LITES MODEL SEL25-SD WITH SELF-DIAGNOSTICS. CONNECT TO THE UNSWITCHED LIGHTING BRANCH CIRCUIT SERVING THE SPACE THE UNIT IS INSTALLED AND CIRCUIT WITH 2#12, 1#12G, 3/4" EMT FOR POWER SENSING AND BATTERY CHARGING. MATCH ELEVATION OF ADJACENT EMERGENCY LIGHTING UNITS. CONCEAL BRANCH CIRCUITRY ABOVE FINISHED CEILINGS AND WALLS.
- 2

PROVIDE A DOUBLE-SIDED, LED, BATTERY-OPERATED EXIT SIGN: SURE-LITES MODEL LPX7RSF. CONNECT TO THE UNSWITCHED LIGHTING BRANCH CIRCUIT SERVING THE SPACE THE UNIT IS INSTALLED AND CIRCUIT WITH 2#12, 1#12G, 3/4" EMT FOR POWER SENSING AND BATTERY CHARGING. CONCEAL BRANCH CIRCUITRY ABOVE FINISHED CEILINGS AND WALLS.
- 3

REPLACE THE WALL-MOUNTED EXIT SIGN AT THIS LOCATION WITH A SURE-LITES DOUBLE-SIDED, LED, BATTERY-OPERATED EXIT SIGN: SURE LITES MODEL LPX7RSF. MODIFY/EXTEND EXISTING LIGHTING BRANCH CIRCUITRY TO NEW UNIT.



FACILITIES  
ENGINEERING  
WWW.FCS.CORNELL.EDU

ARCHITECTURE, AND CIVIL,  
ELECTRICAL, ENVIRONMENTAL,  
AND MECHANICAL ENGINEERING

201 HUMPHREYS SERVICE BLDG.  
ITHACA, NEW YORK 14853-3701


WARNING

IT IS A VIOLATION OF NEW YORK STATE LAW FOR ANY PERSON, UNLESS ACTING UNDER THE DIRECTION OF A LICENSED ARCHITECT OR ENGINEER, TO ALTER THIS DOCUMENT IN ANY WAY. IF THIS DOCUMENT IS ALTERED, THE ALTERING ARCHITECT OR ENGINEER SHALL AFFIX TO SUCH DOCUMENT THEIR SEAL AND THE NOTATION "ALTERED BY" FOLLOWED BY THEIR SIGNATURE, THE DATE OF SUCH ALTERATION, AND A SPECIFIC DESCRIPTION OF THE ALTERATION.

ARCH/ CIVIL:

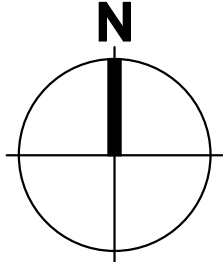
ELECTRICAL: *ATR*

MECHANICAL: *JS*



REVISIONS

|   |          |                        |
|---|----------|------------------------|
| 1 | 12/12/25 | ISSUE FOR PERMIT       |
| 2 | 01/23/26 | ISSUE FOR CONSTRUCTION |



0' 4' 8' 12' 24'  
SCALE: 3/32" = 1'-0"

301 COLLEGE AVENUE  
ITHACA, NEW YORK 14850

COLLEGE AVE  
301 TURNOVER

|           |                  |
|-----------|------------------|
| DATE:     | JANUARY 23, 2026 |
| FACILITY: | 3927             |
| DESIGN:   | C. WAYMAN        |
| DRAWN:    | CMW              |

4TH FLOOR EM  
LIGHTING AND  
EXIT SIGN PLAN

E-203  
17839620

ARCHIVE BAR CODE