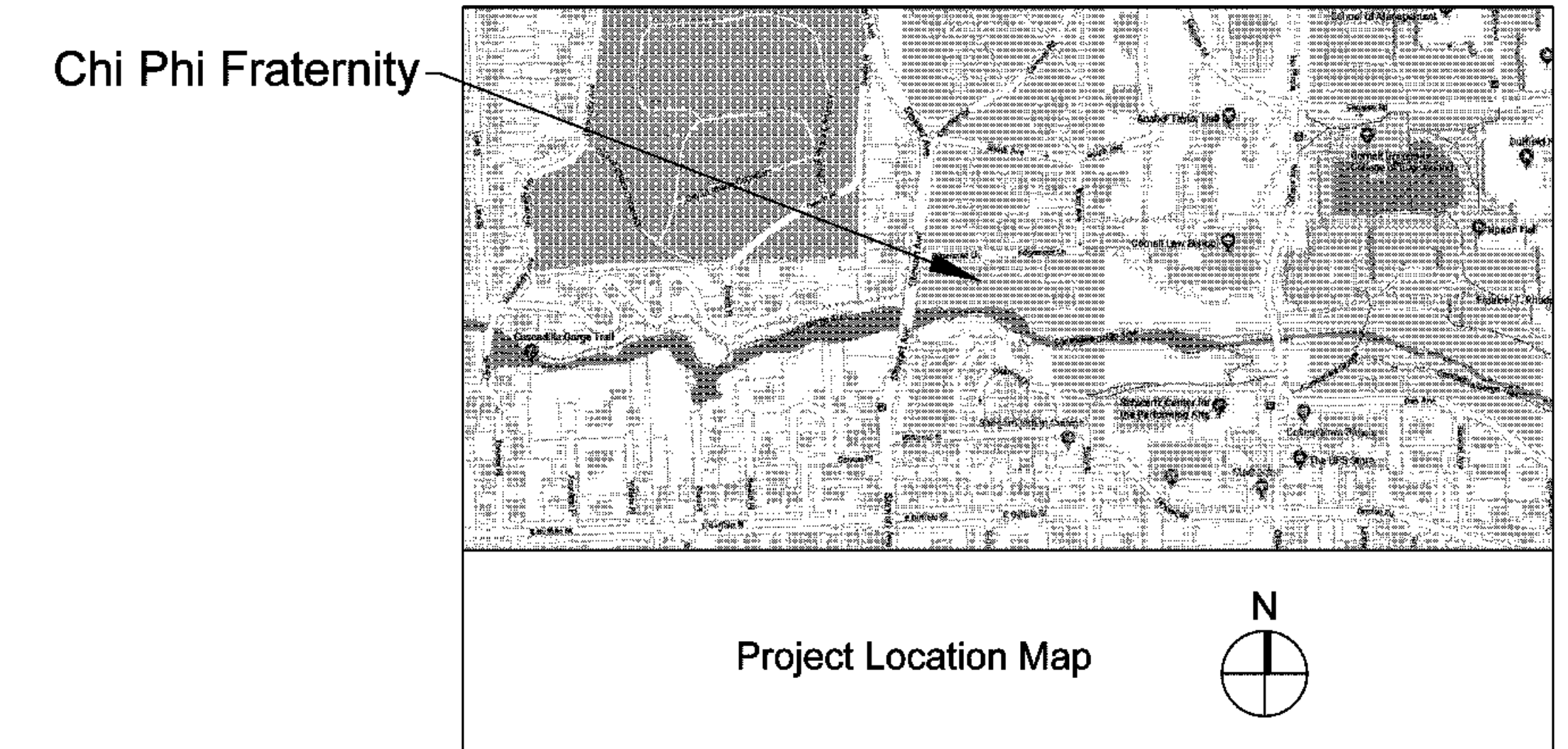


# Cornell University

## Chi Phi Fraternity Second Floor Bathroom Renovations

107 Edgemoor Lane  
 Cornell University  
 Ithaca, NY 14850



Drawing List:

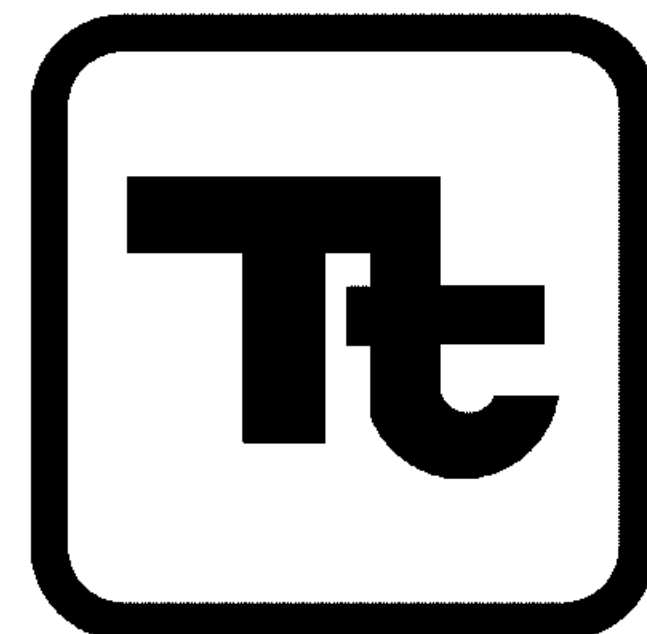
TS	Title Sheet
SA	Symbols and Abbreviations
<u>Architectural Drawings:</u>	
A100	Second Floor Demolition Plans, Floor Plans and Reflected Ceiling Plans
A101	Interior Elevations, Section and Details
A102	Schedules and Details
<u>Mechanical Drawings:</u>	
M100	Enlarged Second Floor Plans Details and Schedule
<u>Electrical Drawings:</u>	
E101	Lighting and Power Demolition Plans
E102	Lighting, Power and Fire Alarm Plans
<u>Plumbing Drawings:</u>	
P100	Enlarged First and Second Floor Plans, Schedules and Details

### CODE COMPLIANCE REVIEW:

BASED ON THE NEW YORK STATE UNIFORM FIRE PREVENTION AND BUILDING CODE INCLUDING APPLICABLE 2015 IBC CODES, 2017 NYS SUPPLEMENTS AND 2016 NYS SUPPLEMENT ENERGY CONSERVATION CONSTRUCTION CODE. PROJECT IS A LEVEL II ALTERATION, AS DEFINED BY THE INTERNATIONAL EXISTING BUILDING CODE.

#### BUILDING REQUIREMENTS:

1. SPRINKLER SYSTEM (CHAPTER 9):  
AUTOMATIC SPRINKLER SYSTEM PROVIDED THROUGHOUT FACILITY.
2. OCCUPANCY CLASSIFICATION (CHAPTER 3):  
R-2
3. CONSTRUCTION TYPE - EXISTING (CHAPTER 5):  
VA
4. ROOM USE DESIGNATIONS:  
FOR ROOM USE DESIGNATIONS- SEE DRAWING A100
5. ROOM SQUARE FOOTAGES:  
FOR ROOM SQUARE FOOTAGES - SEE DRAWING A100
6. NO CHANGES TO OCCUPANCY, EGRESS NOR RATINGS PROPOSED. PLUMBING FIXTURE COUNT TO BE INCREASED BY ONE (1) URINAL, JANITOR CLOSET TO BE ADDED IN LOCATION OF PREVIOUSLY ABANDONED TOILET ROOM.
7. MAINTAIN 1 HOUR FIRE RATING AT ALL EXISTING PARTITIONS BETWEEN WORK AREAS AND ADJACENT SLEEPING UNITS.
8. MAINTAIN 1 HOUR FIRE RATING AT HORIZONTAL SEPARATION BETWEEN WORK AREAS AND OCCUPIED SPACES BELOW.

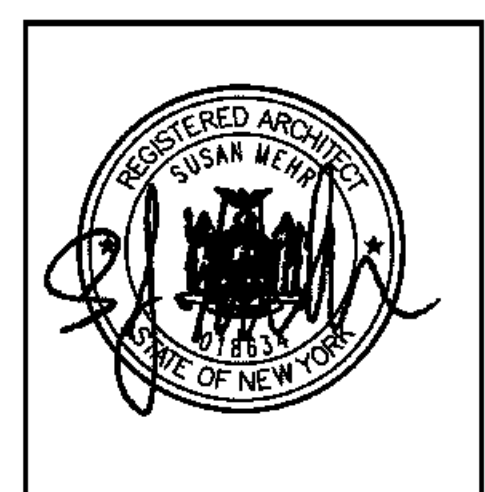


**TETRA TECH**  
 ARCHITECTS & ENGINEERS

Architecture Engineering Planning  
 @ High Performance Facilities

February 14, 2018

TS



Set No.

08249-18004











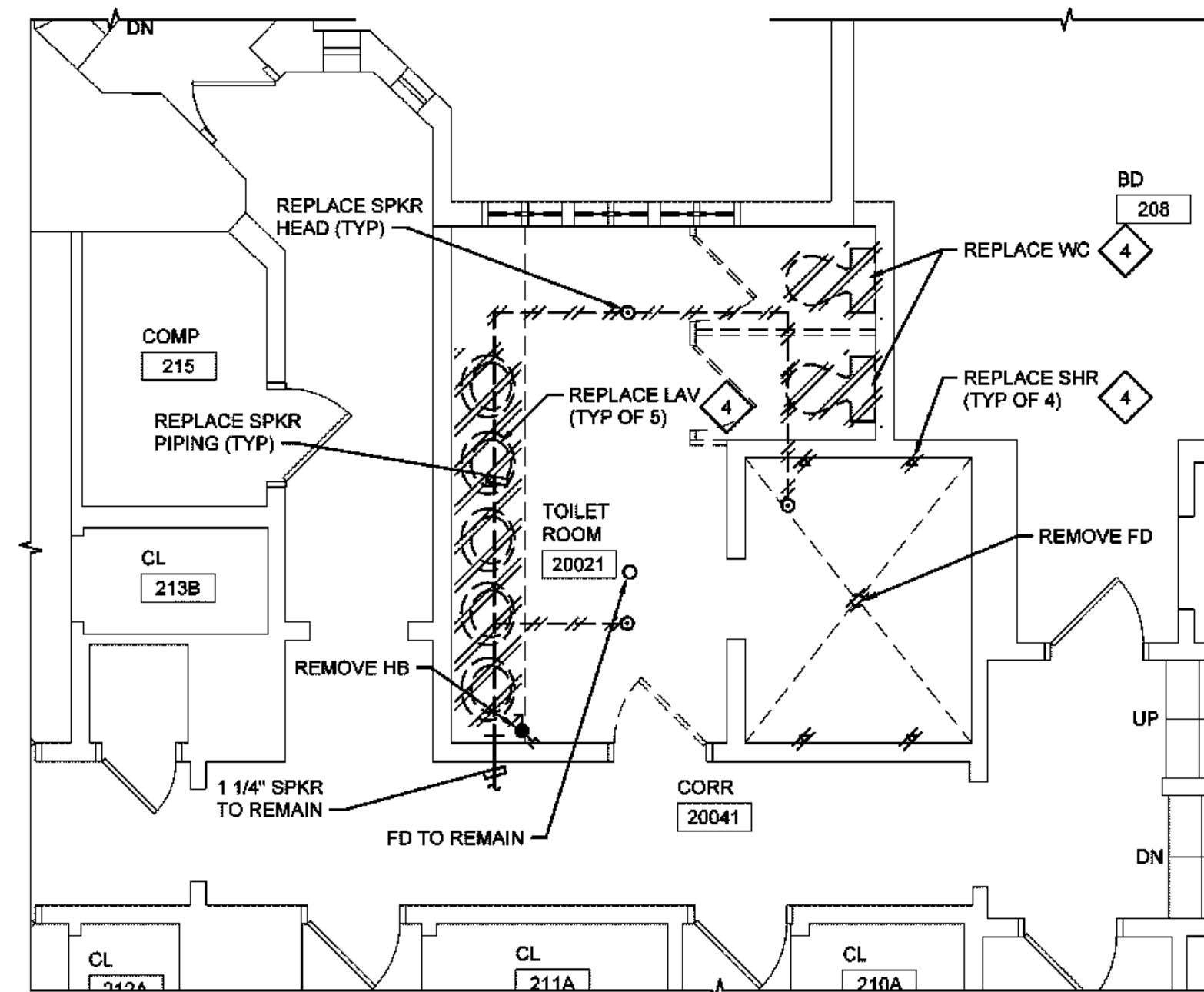




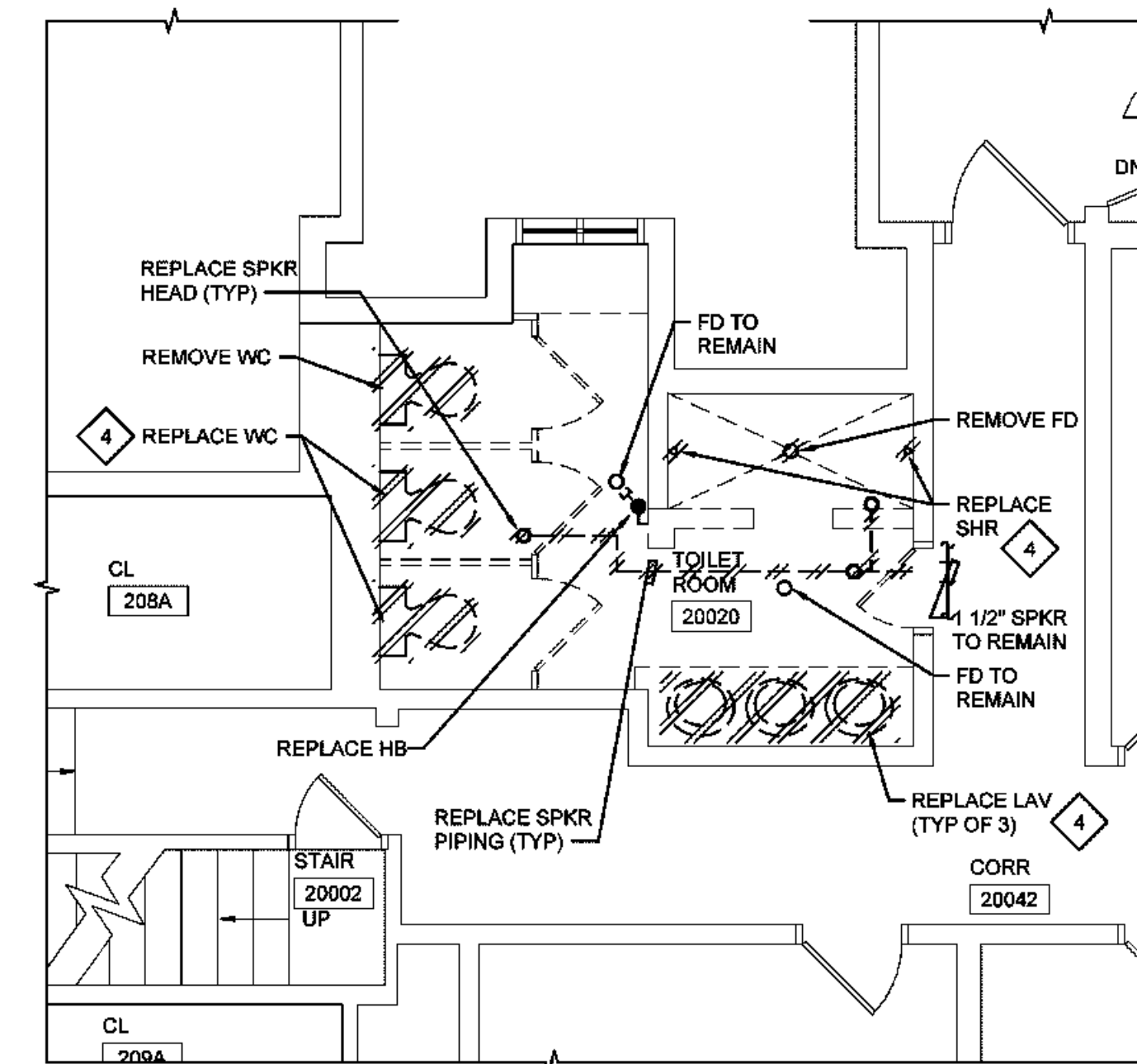


DWG LABEL	ROUGH-IN CONNECTION SIZE (INCHES)				HANDICAP ACCESSIBLE	DESCRIPTION	NOTES
	SAN	VENT	CW	HW			
WC "A"	4	2	1/2	-	NO	VITREOUS CHINA, FLOOR MOUNTED, BOTTOM OUTLET, DUAL FLUSH FLUSH TANK AND SEAT.	1
UR "A"	1 1/2	1 1/2	1/2	-	NO	VITREOUS CHINA, WALL MOUNTED WITH SUPPORT, TOP SPUD AND MANUAL FLUSH VALVE.	1
LAV "A"	1 1/2	1 1/2	1/2	1/2	NO	VITREOUS CHINA, UNDER COUNTER MOUNTED, MANUAL-TYPE MIXING, COMMERCIAL FAUCET, SOLID BRASS VALVE, SUPPLIES, TAILPIECE AND "P" TRAP.	1
MR "A"	3	2	3/4	3/4	-	FLOOR MOUNTED RECEPTOR WITH SERVICE SINK FAUCET, RIM GUARD, DRAIN, HOSE AND BRACKET, AND MOP BRACKET.	-
SHR "A"	-	-	1/2	1/2	NO	CONCEALED SHOWER VALVE SYSTEM WITH SHOWER HEAD WALL ESCUTCHEONS.	-
HB	-	-	1/2	-	-	HOSE BIBB WITH LOOSE KEY HANDLE AND INTEGRAL VACUUM BREAKER.	-
LINEAR FLOOR DRAIN	2	1 1/2	-	-	-	ALL STAINLESS STEEL CONSTRUCTION, LINEAR FLOOR DRAIN SYSTEM WITH MEMBRANE FLANGE AND GRID TYPE GRATE.	-

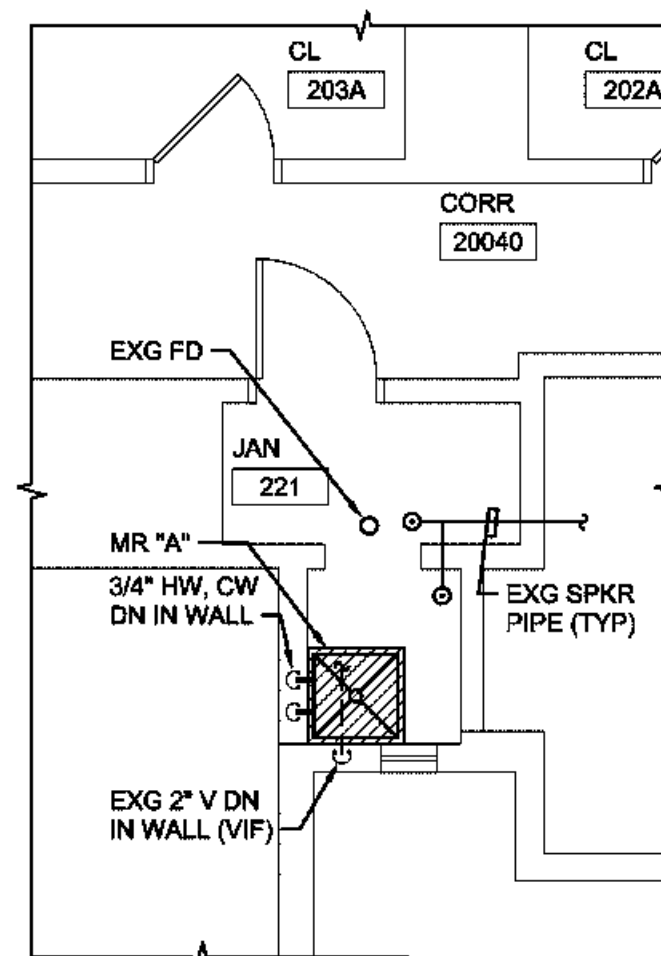
NOTES:  
1. REFER TO TOILET ROOM PLANS ON "A" DRAWINGS FOR FIXTURE CENTERLINE DIMENSIONS.



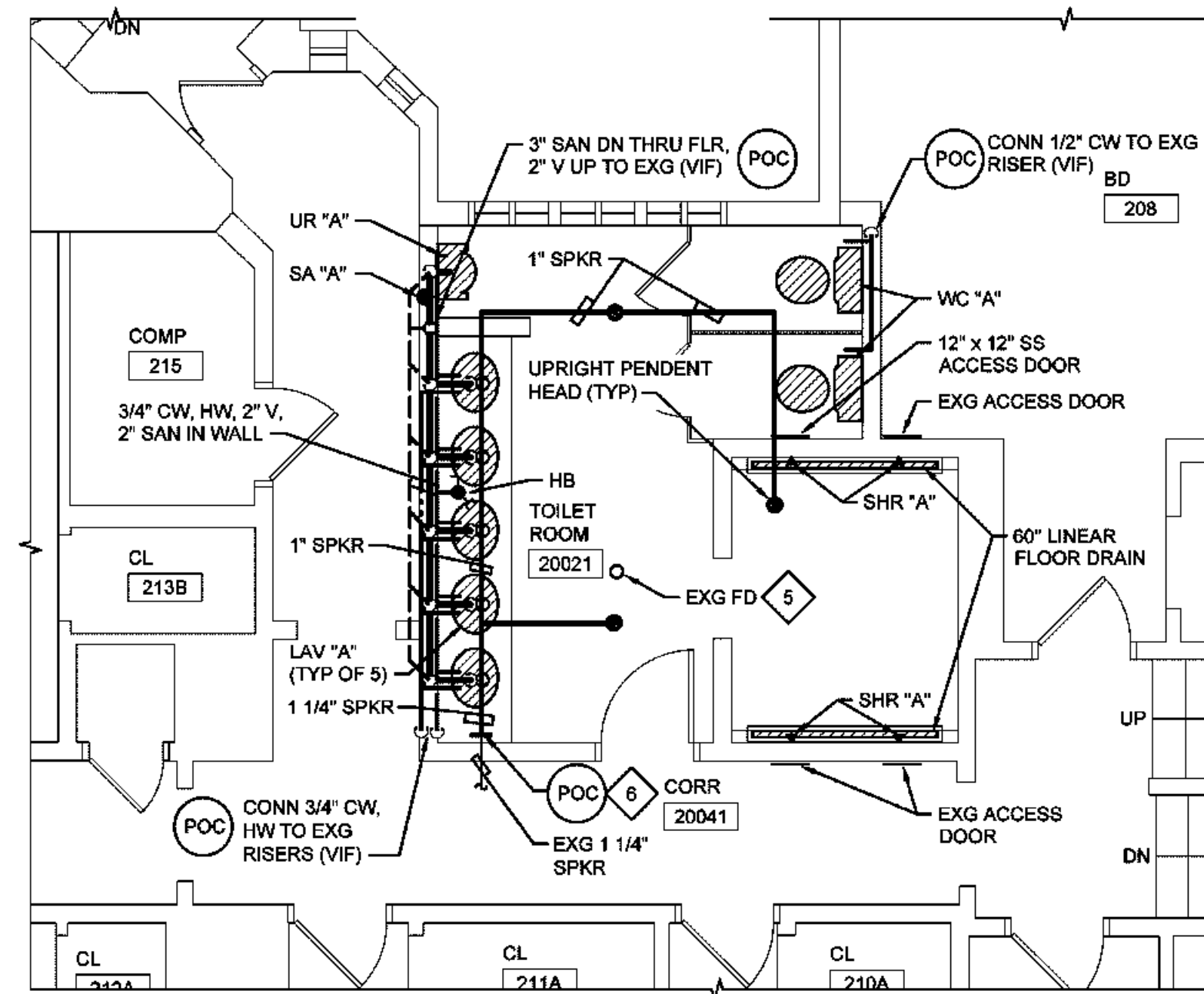
4 Toilet Room 20021 Demolition Plan  
1/4" = 1'-0"



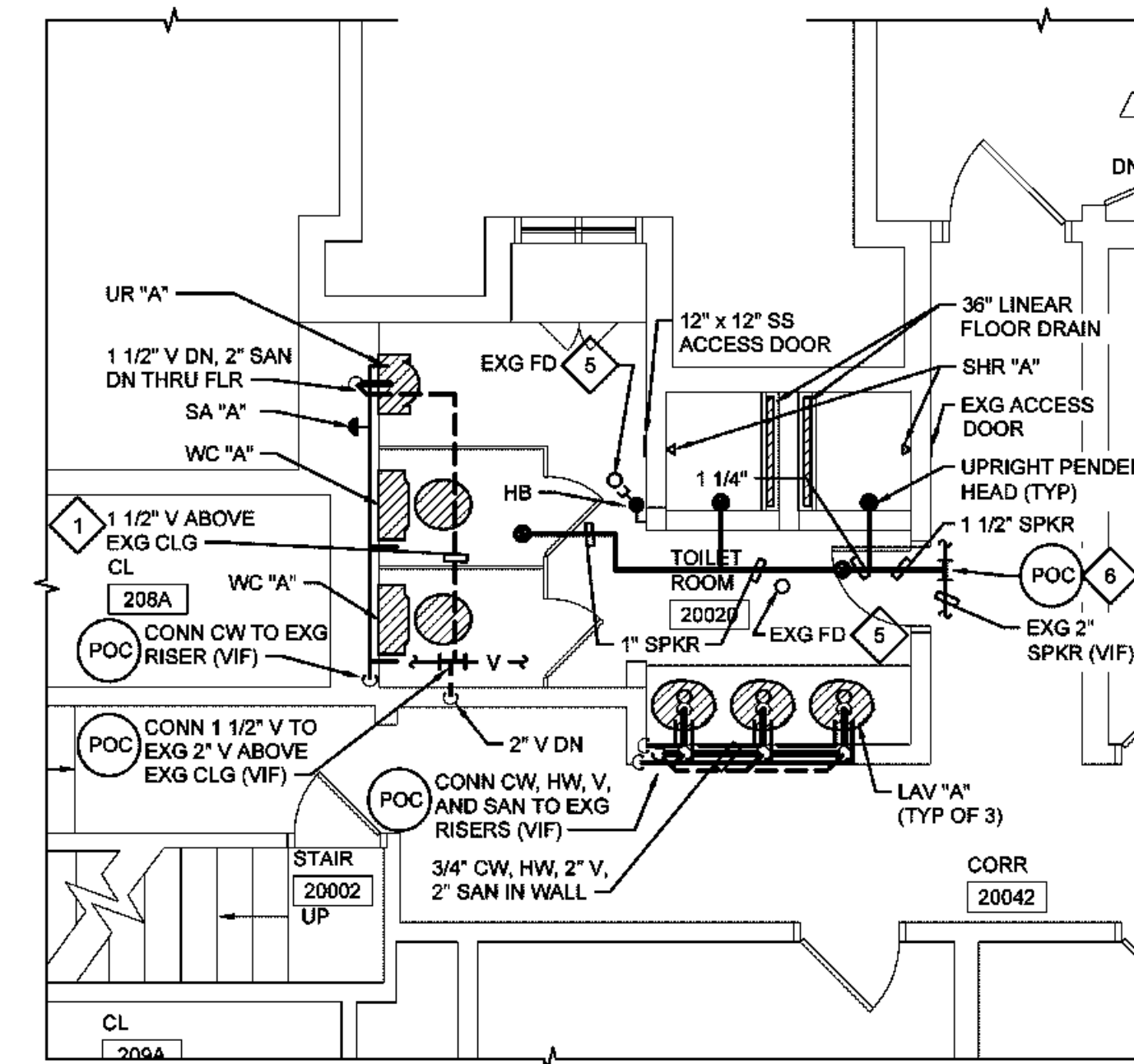
1 Toilet Room 20020 Demolition Plan  
1/4" = 1'-0"



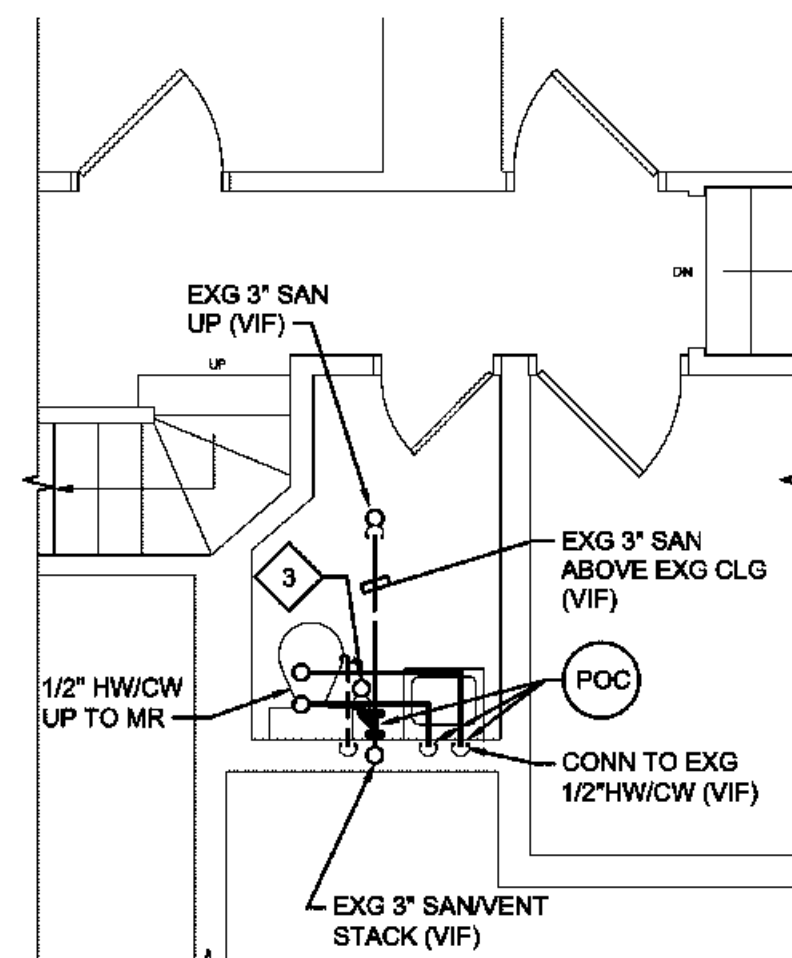
7 Jan 221 Plan  
1/4" = 1'-0" (BY ALTERNATE 1)



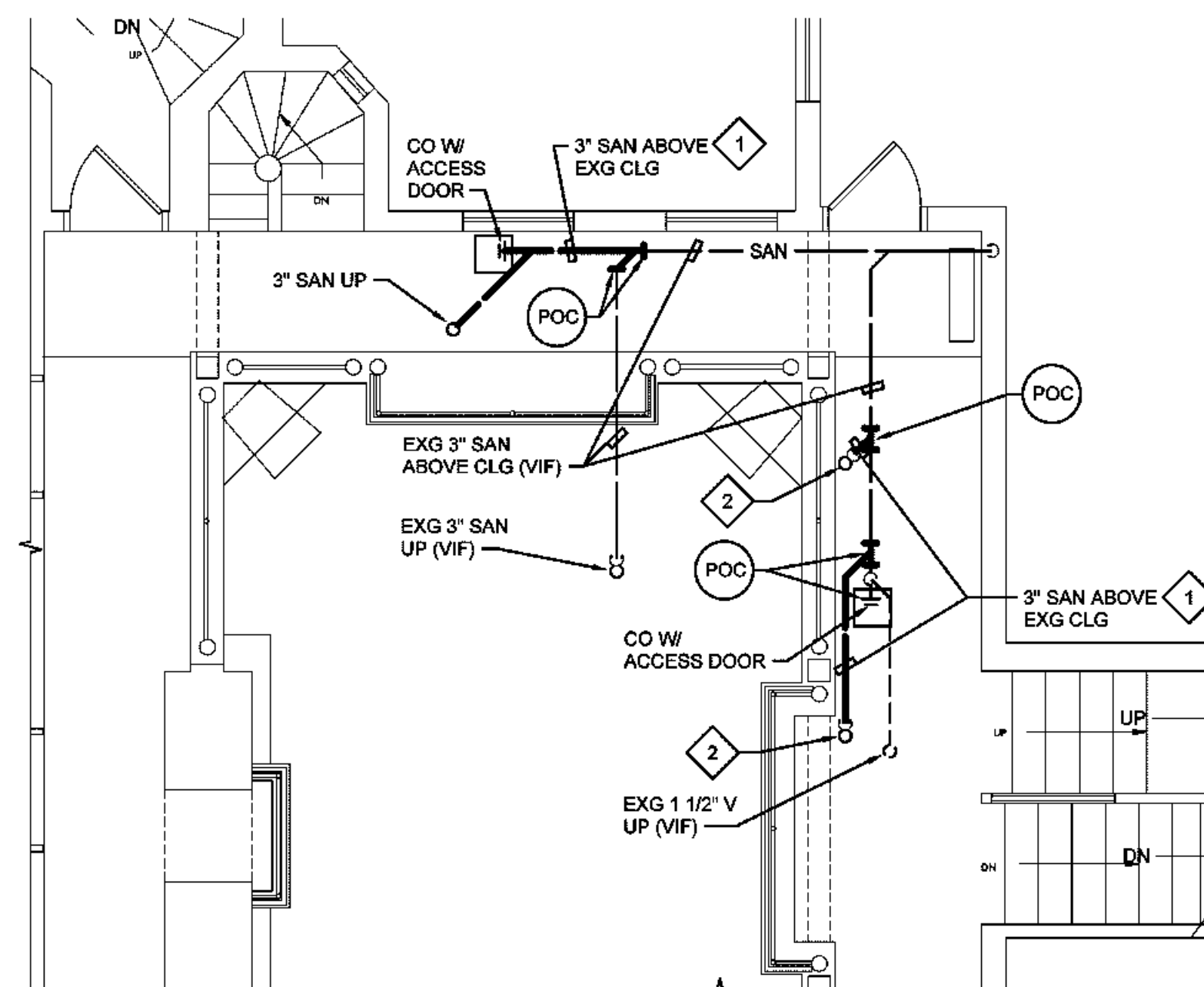
5 Toilet Room 20021 Plan  
1/4" = 1'-0"



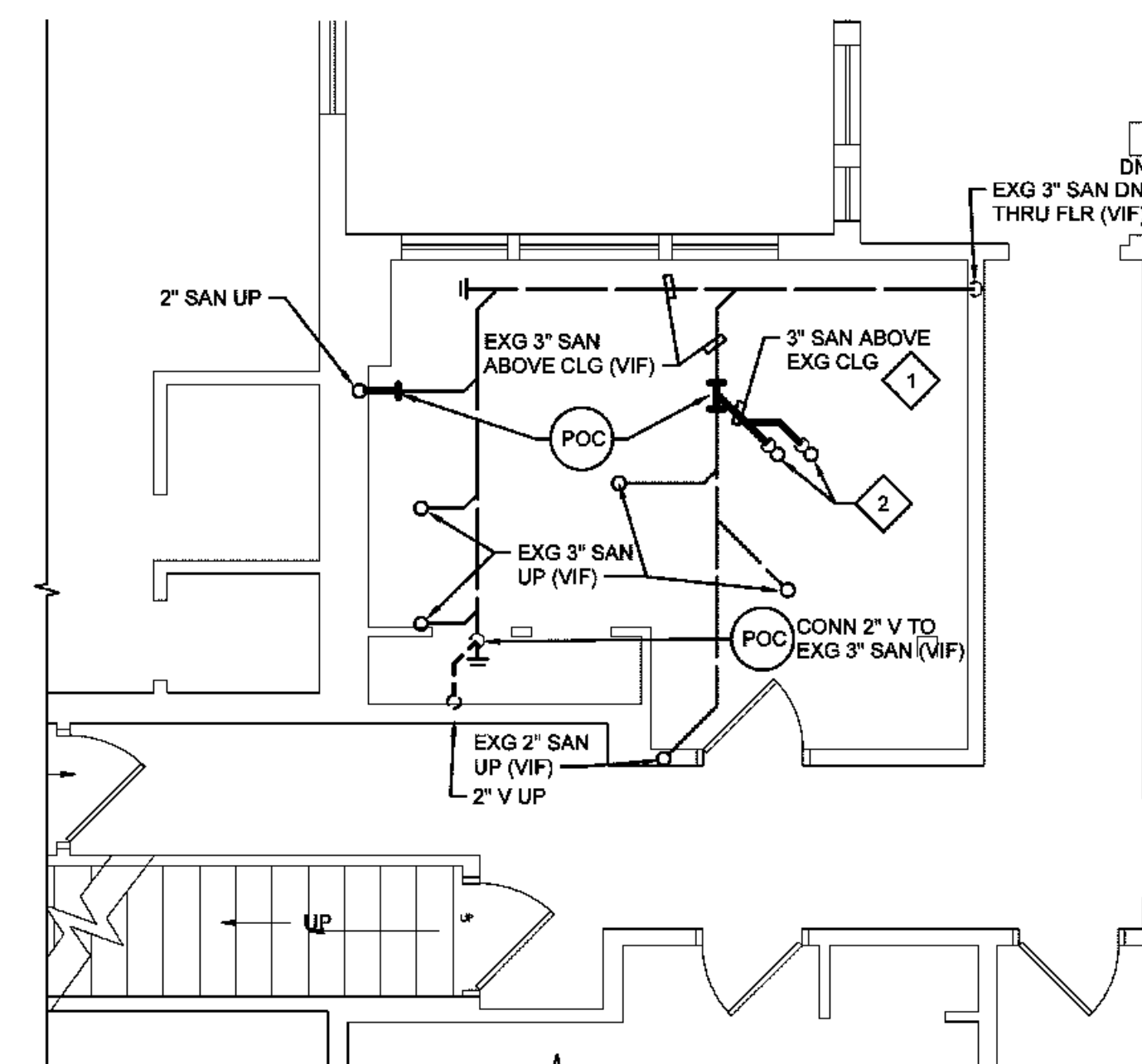
2 Toilet Room 20020 Plan  
1/4" = 1'-0"



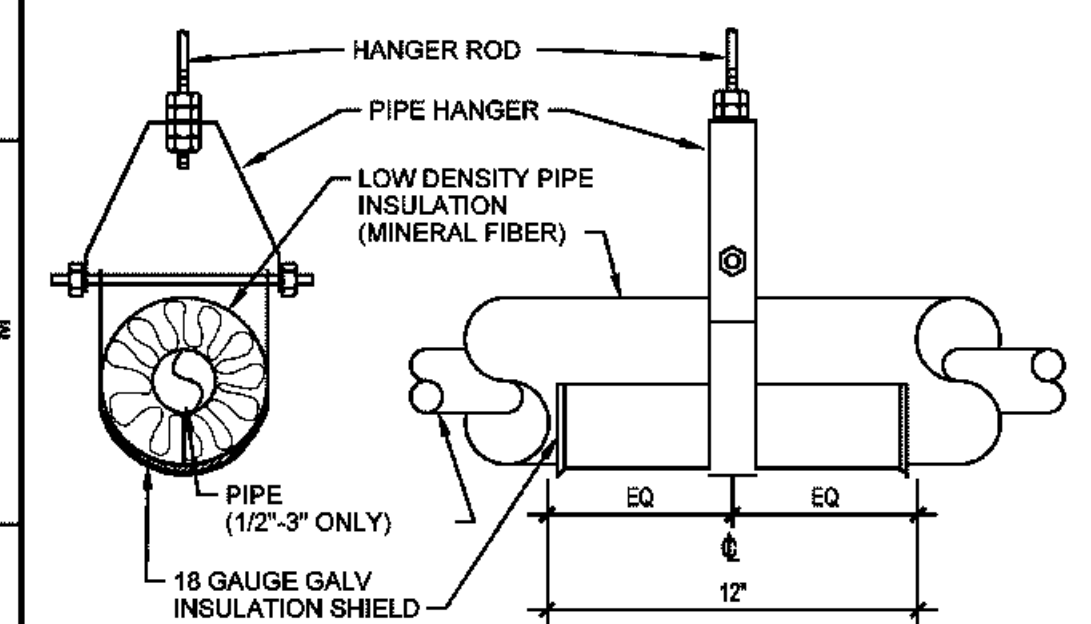
8 Partial First Floor Plan  
1/4" = 1'-0" (BY ALTERNATE 1)



6 Partial First Floor Plan  
1/4" = 1'-0"



3 Partial First Floor Plan  
1/4" = 1'-0"



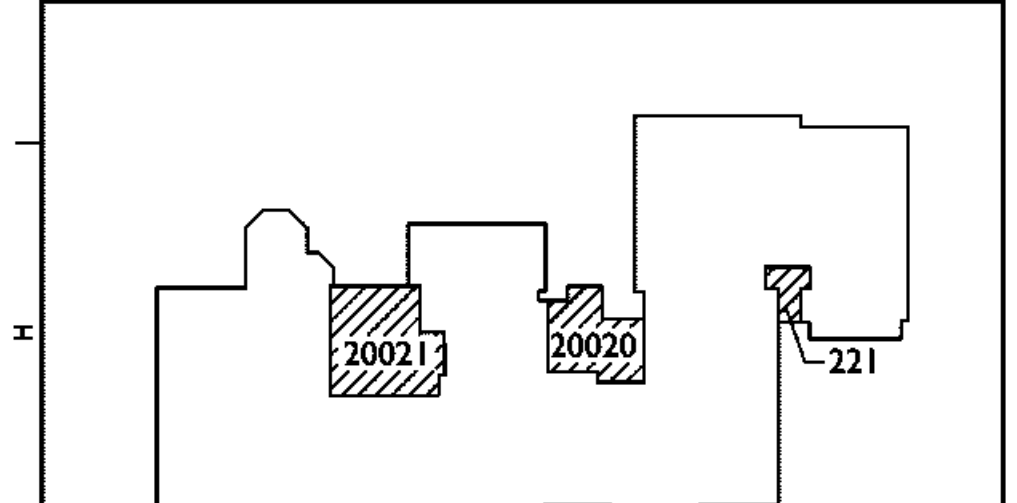
9 Insulation Shield Detail  
NOT TO SCALE

General Notes

1. VERIFY ALL PIPING LOCATIONS, SIZES, AND ARRANGEMENTS IN FIELD PRIOR TO BID. NOTIFY ARCHITECT IN WRITING OF ANY DISCREPANCIES.
2. REMOVE PLUMBING FIXTURES INDICATED, INCLUDING ASSOCIATED PIPING, FASTENERS, SUPPORTS, ETC., BACK TO POINTS OF CONCEALMENT WITHIN OR BEHIND REMAINING WALLS, BELOW FLOORS OR ABOVE CEILINGS.
3. REPLACE OR RELOCATE PLUMBING FIXTURE INDICATED. REPLACE PIPING BACK TO POINTS OF ENTRY INTO ROOM AND CONCEAL WITHIN OR BEHIND WALLS, BELOW FLOORS OR ABOVE CEILINGS. PATCH DISTURBED FINISHES TO MATCH EXISTING UNLESS SPECIFICALLY NOTED OTHERWISE.
4. REMOVE ABANDONED ACCESSIBLE PIPING TO MAIN BRANCHES, STACKS OR RISERS AS REQUIRED TO ELIMINATE EXPOSED PIPING AND DEAD END PIPING RUNS LONGER THAN 1'-0". COORDINATE CONCEALMENT OF PIPING WITH FINAL CONSTRUCTION OF WALLS, FLOORS AND CEILINGS.
5. LEGALLY DISPOSE OF ALL DEMOLITION DEBRIS.
6. INCLUDE TRENCHING, CUTTING AND PATCHING OF FLOORS, WALLS AND CEILINGS, INCLUDING CEILING TILE REMOVAL AND REPAIRS. ABANDONED OPENINGS AND DISTURBED FINISHES TO MATCH EXISTING. TAKE PRECAUTIONS TO PROTECT STRUCTURAL INTEGRITY OF FLOOR OR WALLS WHEN TRENCHING OR CUTTING.
7. MATERIALS FOR PLUMBING INSTALLATION SHALL BE NEW, UNLESS SPECIFICALLY NOTED OTHERWISE.
8. SHUT DOWN SPRINKLER SYSTEM AS REQUIRED TO PERFORM WORK. COORDINATE ALL SPRINKLER WORK AND SHUT DOWNS WITH CORNELL UNIVERSITY ENVIRONMENTAL HEALTH AND SAFETY (EHS) PRIOR TO COMMENCING WORK.

Plumbing Notes

1. SAWCUT AND PATCH CEILING TO MATCH EXISTING.
2. 3" SANITARY WITH "P" TRAP UP TO LINEAR FLOOR DRAIN.
3. 3" SANITARY WITH "P" TRAP UP TO MOP SINK.
4. REPLACE EXISTING DOMESTIC HOT AND COLD WATER PIPING, SANITARY WASTE AND VENT PIPING BURIED IN EXISTING WALLS. REPLACE PIPING BACK TO POINT WHERE EXISTING PIPING ENTERS THE TOILET ROOM.
5. REPLACE STRAINER ON EXISTING DRAIN BODY.
6. ISOLATE AND PRESSURE TEST SPRINKLER PIPING FROM THIS POINT FORWARD. REPAIR LEAKS UNTIL SYSTEM HOLDS TIGHT AT 200 PSI FOR DURATION OF 24 HOURS WITNESSED BY EHS AND IFD.



PROJ N  
Key Plan  
NTS

Rev. No. Date Description:



complex world CLEAR SOLUTIONS



Tetra Tech Engineers, Architects & Landscape Architects, P.C.



Cornell University  
Ithaca, New York

Chi Phi Fraternity  
Second Floor Bathroom Renovations

Enlarged First and Second Floor Plans, Schedules and Details

Drawn by: GPD Date: February 14, 2018 Drawing No.:  
Project No.: 08249-18004 P100