

CORNELL UNIVERSITY
FACILITIES CONTRACTS
121 HUMPHREYS SERVICE BUILDING
ITHACA, NEW YORK 14853-3701

BRADFIELD HALL G12 GROWTH
CHAMBER INSTALLATION

ADDENDUM NO. 1

January 12, 2024

This Addendum contains changes to the requirements of the Contract Documents and Specifications. Such changes are to be incorporated into the Construction Documents and shall apply to the work with the same meaning and force as if they had been included in the original document. Wherever this Addendum modifies a portion of a paragraph of the specifications or a portion of any Drawing, the remainder of the Paragraph or Drawing shall remain in force.

NOTE: Provisions of all Contract Documents apply.

Item 1. Drawing P-100

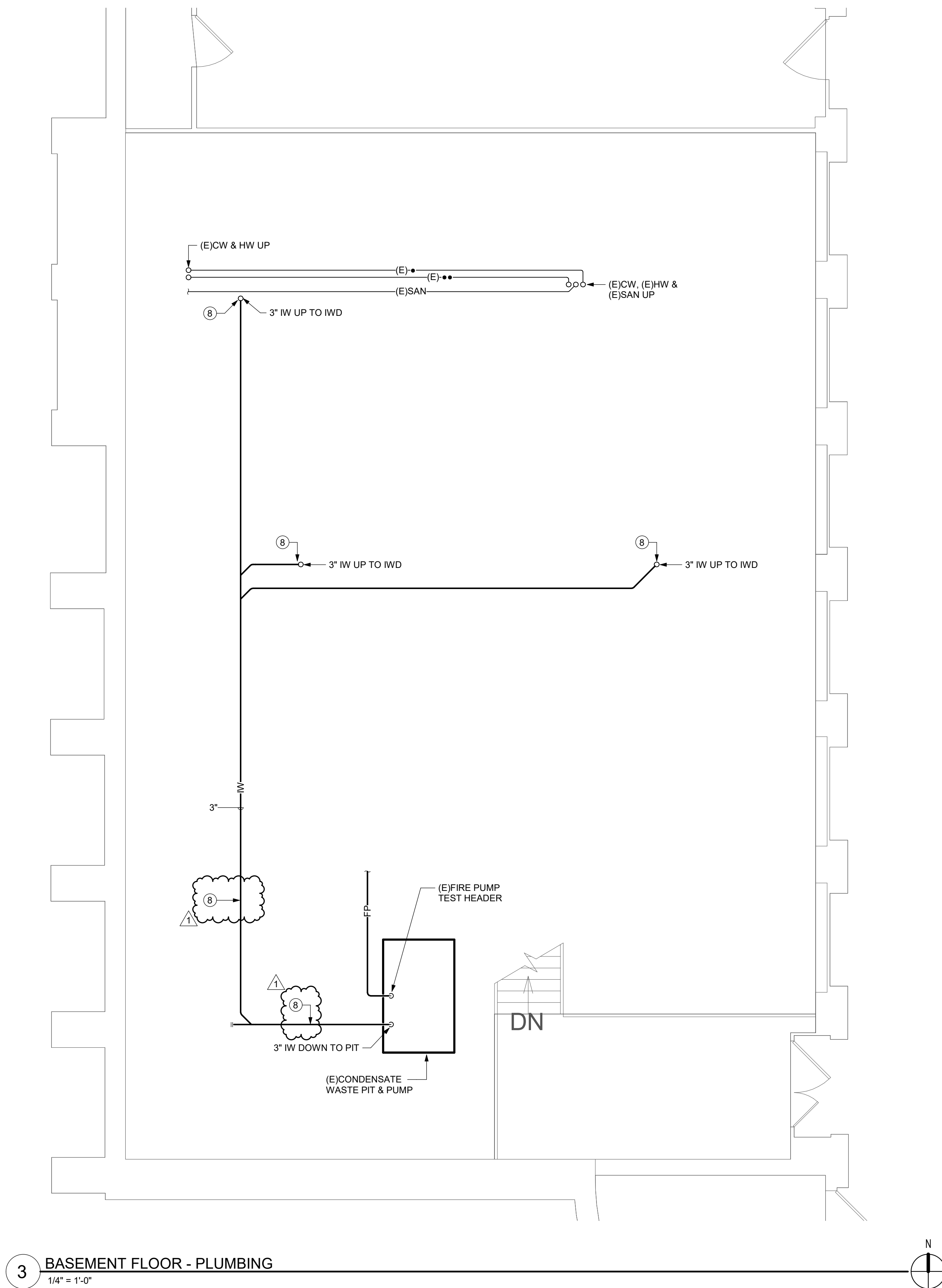
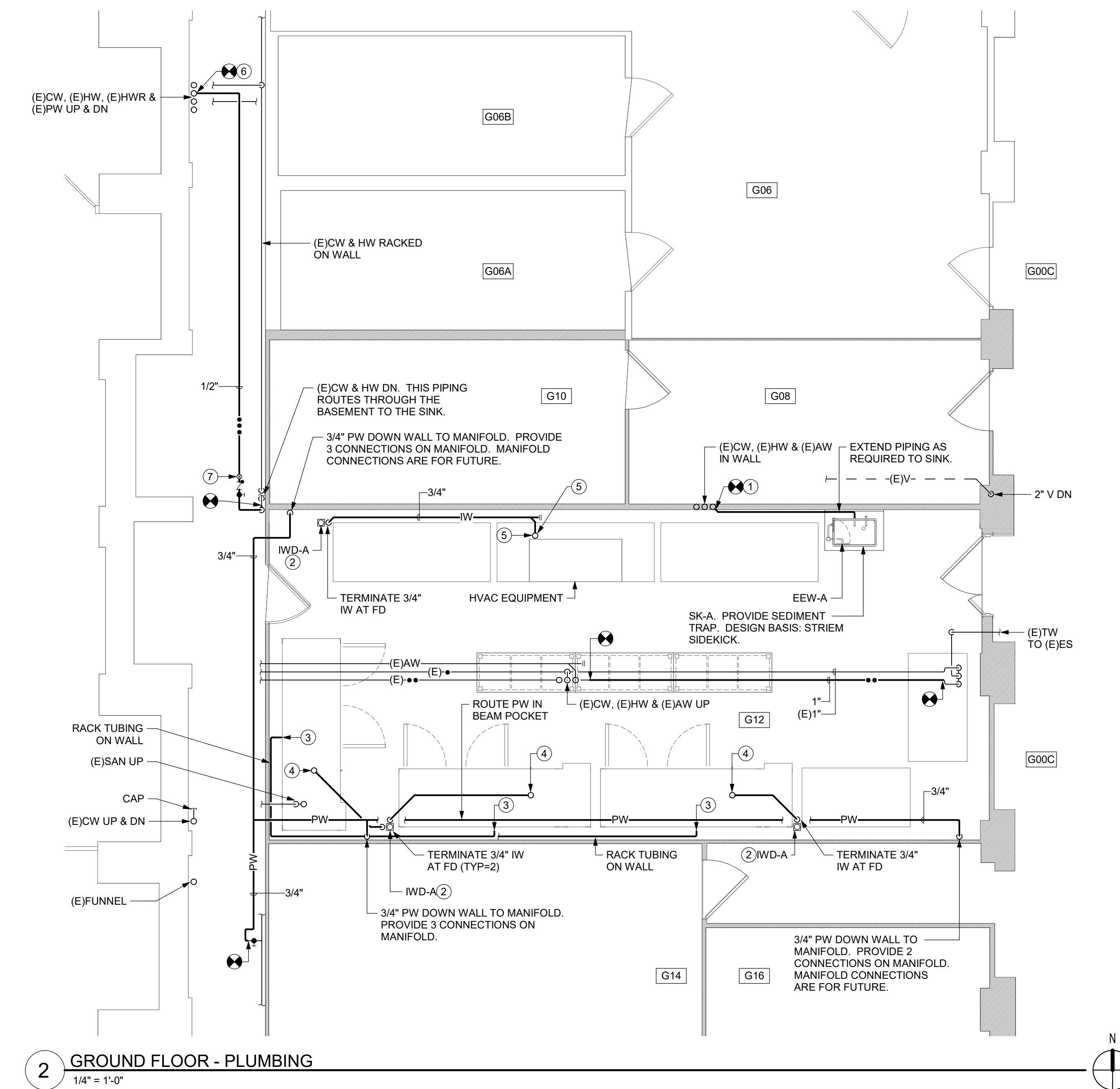
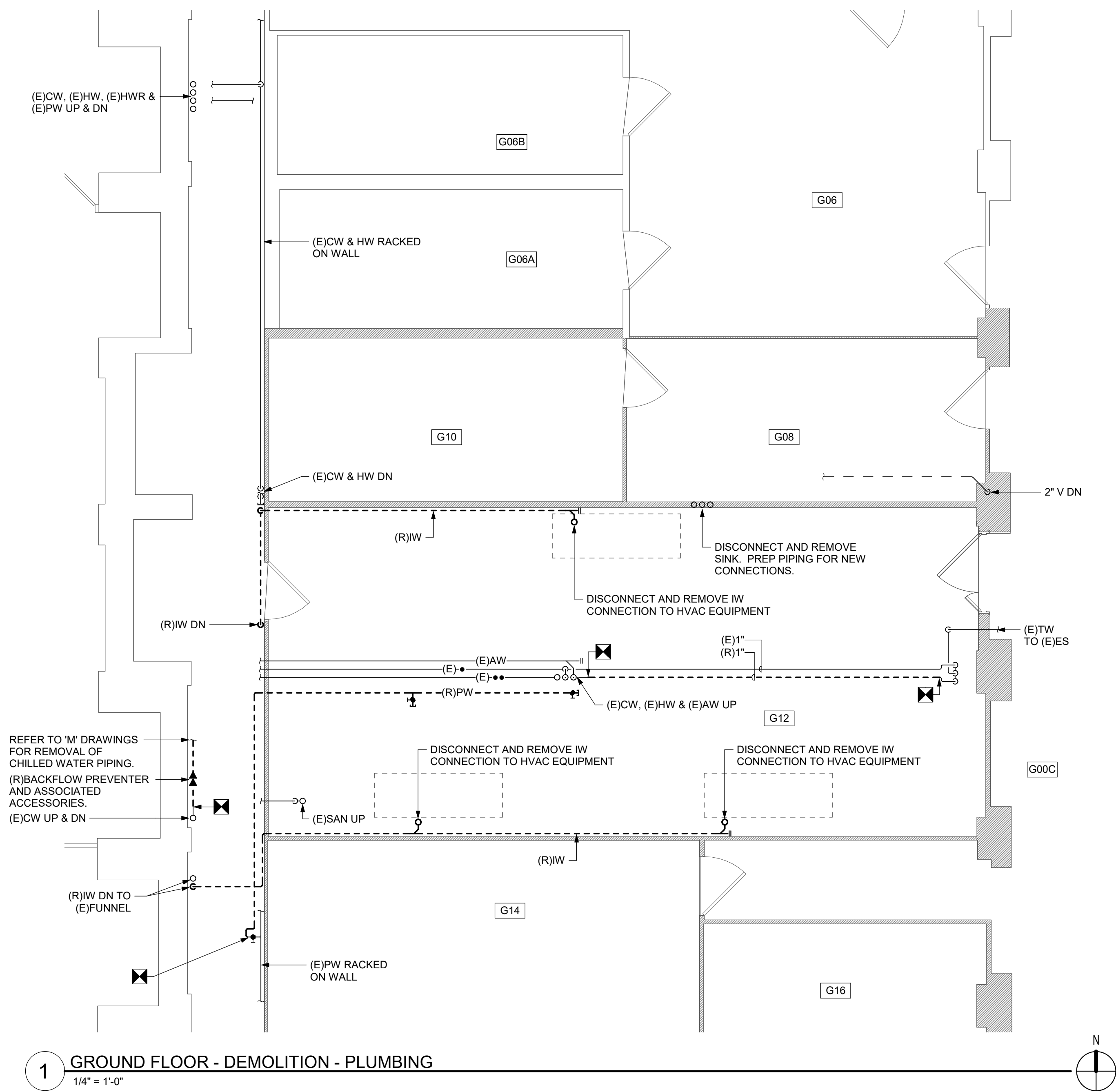
DELETE in its entirety.

REPLACE with revised Drawing P-100R, attached.

Item 2. **ADD** Prebid Sign in Sheet for Contractor reference purposes only, attached.

Attachments: Drawing P-100R
Prebid Sign in Sheet

******END OF ADDENDUM******



GENERAL NOTES:

- WORK IN MECHANICAL SPACE. THIS IS A TWO-STORY SPACE WITH LIMITED AVAILABLE SPACE AND CONGESTED WITH DUCTWORK AND PIPING. WORK WILL BE HIGH IN THE SPACE AND REQUIRE TIES OFF AND RELATED OSHA REQUIREMENTS. BIDDERS TO VERIFY IN FIELD CONDITIONS AND ROUTING PRIOR TO BIDDING.

DRAWING NOTES

- CONNECT 1/2" CW, 1/2" HW AND 1 1/2" AW TO EXISTING PIPING STUBS IN WALL. ROUTE PIPING TIGHT TO WALL AND CONNECT TO NEW SINK AS REQUIRED.
- VERIFY FLOOR DRAIN IS NOT LOCATED ABOVE EXISTING STRUCTURE. PROVIDE LABEL AT WALL BY DRAIN "INDIRECT WASTE DRAIN ONLY".
- CONNECT PURE WATER TUBING TO EQUIPMENT AS REQUIRED. TUBING SHALL BE ROUTED TIGHT TO WALL FROM PURE WATER MANIFOLD. PROVIDE AN EXTRA 3'-0" OF TUBING TO ALLOW THE EQUIPMENT TO BE ROLLED OUT.
- CONNECT IW TO EQUIPMENT AS REQUIRED. CONNECT FLEXIBLE TUBING TO ALLOW THE EQUIPMENT TO BE ROLLED OUT. COORDINATE WITH G.C. TO MOUNT BRACKETS ON UNDERSIDE OF THE UNIT FOR TUBING TO BE ROUTED.
- CONNECT 3/4" IW TO HVAC EQUIPMENT AS REQUIRED. REFER TO DETAIL 5 ON P-000.
- CONNECT 1/2" HWR TO (E)HWR RISER
- SET BALANCE VALVE TO 1GPM.
- EXACT ROUTING AND CONNECTION POINTS DETERMINED IN FIELD FOR INDIRECT WASTE PIPING. VERIFY CONDITIONS IN FIELD BEFORE BIDDING.

SWBR

307 East Main Street Rochester NY 14604
505-532-8900 | rochester@swbr.com

SWBR NYS Certificate of
Authorization # 235221



ENGINEERING
Mechanical/Electrical Engineering Consultants
Rochester | Buffalo | Syracuse | Capital District
100 TOLL FREE 800-454-0400 505-532-8900
ROCHESTER, NY 14606 www.meeengineering.com

M/E Project #: 230366



Reg. Exp. 04/30/2026
Cert. of Auth. 0018443

Drawn By: CMD
Checked By: THK
Project Manager: GDD

These documents and all the ideas, arrangements, designs and plans indicated therein or presented thereby are owned by and remain the property of SWBR and no part thereof shall be utilized by any person, firm, or corporation for any purpose whatsoever except with the specific written permission of SWBR. All rights reserved. ©

Revisions
1 01/11/2024 Addendum No.1

Bradfield Hall G12 Growth Chamber Installation
306 Tower Road
Ithaca, NY 14850

SWBR Project Number 23179.00

Cornell University
Ithaca, NY

P-100R
PARTIAL FLOOR
PLANS - PLUMBING

November 22, 2023
100% Construction
Documents