

ADDENDUM NO. 1

NOVEMBER 10, 2021

This Addendum contains changes to the requirements of the Contract Documents and Specifications. Such changes are to be incorporated into the Construction Documents and shall apply to the work with the same meaning and force as if they had been included in the original document. Wherever this Addendum modifies a portion of a paragraph of the specifications or a portion of any Drawing, the remainder of the Paragraph or Drawing shall remain in force.

NOTE: Provisions of all Contract Documents apply.

Item 1. **ADD** Section 01 21 00 – Allowances, attached.

Item 2. Drawing A-102, A-102 Keyed Renovation Notes

ADD Note 5.1:

“BASIS OF DESIGN: MOTT, FULLY ACCESSIBLE FUME HOOD WITH COMBINATION SASH #7341010-S2, 60" WIDE, BRIGHT WHITE. PREPIPED / PREWIRED DOWN. SEE MEP DRAWINGS FOR CONNECTIONS AND FITTINGS.”

Item 3. Drawing A-102, A-102 Keyed Renovation Note 21

DELETE the note in its entirety.

REPLACE with

“BASIS OF DESIGN: MOTT, UNDER-COUNTER PUMP CABINET WITH FAN. 36" WIDE BY 22" DEEP, ADA HEIGHT. #148P011PF. COORDINATE VENTING WITH MECHANICAL AND POWER WITH ELECTRICAL.”

Item 4. Drawing A-104, A-102 Keyed RCP Note 1

DELETE the note in its entirety.

REPLACE with:

“BASIS OF DESIGN: MOTT, CEILING SERVICE PANEL, POWDER-COATED WHITE. CUSTOM SIZE AND ARRANGEMENT OF SERVICES: 1'-0" X 2'-0" TO TAKE PLACE OF HALF A REGULAR CEILING PANEL. WITH 4 SERVICE ACCESS HOLES (2 GAS, 2 VACUUM) AND 4 ELECTRICAL CUTOUTS (2 DATA, 2 POWER). COORDINATE WITH MEP DRAWINGS ON REQUIRED SERVICES PER LOCATION AND PROVIDE BLANKS WHERE LESS SERVICES ARE REQUIRED (E.G. NO GAS OR VACUUM AT SITTING HEIGHT DESKS). TOUCH UP CUT CEILING PANEL TO MATCH OTHER EXPOSED SURFACES.”

Item 5. Drawing A-102, Detail 2 – Room #336 Renovation Plan

DELETE Detail 2 in its entirety.

REPLACE with revised Detail 2, AD1-A1, attached.

Item 6. Drawing P-102 - Plumbing Renovation Plans

DELETE in its entirety.

REPLACE with revised Drawing P-102R, attached

Item 7. Drawing P-501, Plumbing Fixture Schedule, Tag #SK-1

ADD a Watersaver L681VB-LE Pure Water Faucet to SK-1 with the following specifications:

- Deck-mount, 6-inch rigid gooseneck, vacuum breaker
- Tin-lined brass with polished chrome finish
- Serrated hose end, self-closing lever handle, left hand

Item 8. Drawing P-501, Plumbing Piping Accessories Schedule, Tag PV-1

DELETE row for Plumbing Valve PV-1 in its entirety.

REPLACE with the following row:

Tag: PV-1
Component: Ball Valve, Gas
BOD Manf: Apollo
BOD Model: 77G-UL
Pressure Rating: 600 psig WOG
150 psig SWP

Specifications: Acceptable Manufacturers/Models:
- Apollo 77G-UL
- Watts B6000-UL

MSS SP-110, 2-piece, standard or full port, bronze body, chrome plated
brass ball, ASTM B16 brass stem, PTFE seal, UL Approved for Natural
Gas Service

Item 9. Drawing P-501, Plumbing Piping Accessories Schedule

ADD row for Plumbing Valve PV-5

Tag: PV-5
Component: Hose Connection Ball Valve
NPS 1/2-3/4 inch
Water Service
BOD Manf: Apollo
BOD Model: 70LF-140-HC, 70LF-240-HC
Pressure Rating: 300 psig @ 250 °F
300 psig WOG
150 psig SWP
Specifications: Acceptable Manufacturers/Models:
- Apollo 70LF-140-HC, 70LF-240-HC
- Nibco T-585-66-LF-HC, S-585-66-LF-HC
MSS SP-110, 2-piece, full port, bronze body, 316 SS ball & stem,
PTFE or TFE seat

Item 10. Drawing P-501

ADD Schedule for Plumbing Equipment

Tag: VP-1
Location: 354
Service: Vacuum
Manf: Nash
Model: NDC-60
Type: Dry Claw
Capacity: 28 acfm (2.6 scfm)
Pressure: 27 in-HgV (74 torr)
Motor: 1.5 hp TEFC
Electrical: 208 V / 3 Phase / 60 Hz Hardwired
Notes: Contractor to install in acoustically lined base cabinet provided by the GC

Item 11. Drawing M-101, Detail 2 – Room #336 – Mechanical Ductwork Demolition Plan

DELETE Detail 2 in its entirety.

REPLACE with revised Detail 1/AD1-M1 – Room #336 Mechanical Ductwork Demolition Plan, attached.

Item 12. Drawing M-103, Detail 2 – Room #336 – Mechanical Ductwork Renovation Plan

DELETE the Detail 2 in its entirety.

REPLACE with revised Detail 2/AD1-M1 – Room #336 Mechanical Ductwork Renovation Plan, attached.

Item 13. Drawing M-104, FCU-354-1 located in Lab Prep 354

ADD fan coil unit condensate drain piping per revised Detail 1/AD1-M2 Partial Third Floor Mechanical Piping Renovation Plan, attached.

Item 14. Drawing M-308

DELETE the drawing in its entirety.

REPLACE with revised drawing M-308R, attached.

Item 15. Drawing M-309

DELETE the Drawing in its entirety.

REPLACE with revised Drawing M-309R, attached.

Item 16. Drawing M-401, Detail 5 – Air Terminal Devices

DELETE the Detail in its entirety.

REPLACE with revised Detail 2/AD1-M2 Air Terminal Devices, attached.

Item 17. Drawing M-502

DELETE the Drawing in its entirety.

REPLACE with revised Drawing M-502R, attached.

Item 18. RFI Questions and Clarifications

See attached RFI Log Item (1)

Attachments: Section 01 21 00 "Allowances"
Revised Details AD1-A1
AD1-M1
AD1-M2
AD1-E1
Revised Drawings P-102R
M-308R
M-309R
M-502R
RFI Log (1)

****END OF ADDENDUM****

SECTION 01 21 00 ALLOWANCES

1.0 GENERAL

1.1 RELATED DOCUMENTS

- A. This Section describes Allowances to be carried in the Base Bid by the Contractor.
- B. Drawings and general provisions of the Contract, including General Conditions and other Division 01 Specification Sections, apply to this Section.
- C. The Specification Section containing the pertinent requirements of materials and methods to achieve the Work described herein. Selected materials and equipment are specified in the Contract Documents by allowances.

1.2 SUMMARY

- A. Definition: An allowance is an amount determined by the Owner or calculated by the Contractor based on given quantities and stated on the Bid Proposal Submission Form.
- B. Certain items are specified in the Contract Documents by allowances. Allowances have been established in lieu of additional requirements and to defer selection of actual materials and equipment to a later date when direction will be provided to the Contractor. Items covered by these allowances shall be supplied for such amounts and by such persons as the Owner may direct. All uses of the allowances will require the prior written approval of the Owner via a Field Change Authorization.
- C. Types of Allowances may include:
 - 1. Lump Sum Allowance
 - 2. Unit Price Allowance

1.3 SELECTION AND PURCHASE

- A. At the earliest practical date after award of the Contract, advise the Architect of the date when final selection and purchase of each product or system described by an allowance must be completed to avoid delaying the Work. The Contractor shall provide the Owner fourteen (14) calendar days minimum notification of date.
- B. At the Owner's request, the Contractor shall obtain proposals for each allowance for use in making final selections. The Contractor shall include recommendations that are relevant to performing the work.
- C. The Contractor shall purchase products and systems selected by the Architect and Owner from the designated supplier.

1.4 SUBMITTALS

- A. Submit proposals for purchase of products or systems included in allowances, in the form specified for Change Orders.
- B. Submit invoices or delivery slips to show actual quantities of materials delivered to the site for use in fulfillment of each allowance.
- C. Submit time sheets and other documentation to show labor hours and cost for installation of allowance items that include installation as part of the allowance.
- D. Coordinate and process submittals for allowance items in the same manner as for other portions of the work.

1.5 COORDINATION

- A. Coordinate related Work and modify or adjust adjacent Work as necessary to ensure that Work affected by each accepted allowance is complete and fully integrated into the Project.
- B. The Contractor shall include the dollar value of each scheduled allowance number as a separate line item in the Schedule of Values and identify each allowance with Section number 01 21 00.
- C. The Owner shall provide the Contractor with a Field Change Authorization prior to proceeding with the Work of an allowance.

1.6 LUMP SUM AND UNIT PRICE ALLOWANCES

- A. Allowances shall include cost to the Contractor of specific products and materials ordered by the Owner or selected by the Architect under allowance and shall include applicable taxes, freight, and delivery to the Project site.
- B. Included as part of each allowance are miscellaneous devices, accessory objects or similar items incidental to or required for a complete installation whether or not mentioned as part of the allowance.
- C. Unless otherwise indicated, Contractor's cost for receiving and handling at Project site, labor, installation, overhead and profit, and similar costs related to products and materials ordered by the Owner or selected by the Architect under allowance shall be included as part of the Contract Sum and not part of the allowance.
- D. Unused Materials: Return unused materials purchased under an allowance to the manufacturer or supplier for credit to the Owner, after installation has been completed and accepted.
 - 1. If requested by the Owner, retain and prepare unused materials for storage by the Owner. Deliver unused material to Owner's storage space as directed.

1.7 ADJUSTMENT OF ALLOWANCES

- A. Allowance Adjustment: To adjust allowance amounts and scope of work, prepare a Change Order proposal based on the difference between purchase amount and the allowance, multiplied by final measurement of work-in-place where applicable. If applicable, include reasonable allowances for cutting losses, tolerances, mixing wastes, normal product imperfections, and similar margins.
 - 1. Include installation costs in purchase amount only where indicated as part of the allowance.
 - 2. Prepare explanation and documentation to substantiate distribution of overhead costs and other margins claimed.
 - 3. Submit substantiation of a change in scope of work, if any, claimed in Change Order related to unit-cost allowance.
 - 4. Owner reserves the right to establish the quantity of work-in-place by independent quantity survey, measure, or count.
- B. Submit claims for increased costs because of a change in scope or nature of the allowance described in the Contract Documents, whether for the purchase order amount or Contractor's handling, labor, installation, or overhead and profit. Submit claims in accordance with General Conditions – Changes in Work within twenty-one (21) days of receipt of Field Change Authorization authorizing work to proceed. The Owner will reject claims submitted later than twenty-one (21) days after such authorization.
 - 1. Do not include Contractor's or subcontractor's indirect expenses in the Change Order cost amount unless it is clearly shown that the nature or extent of work has changed from what could have been foreseen from information in the Contract Documents.
 - 2. No change to Contractor's indirect expenses is permitted for selection of higher or lower priced materials or systems of the same scope and nature as originally indicated.

2.0 PRODUCTS – NOT USED

3.0 EXECUTION

3.1 EXAMINATION

- A. Examine products covered by an allowance promptly on delivery for damage or defects. Return damaged or defective products to manufacturer for replacement.

3.2 PREPARATION

- A. Coordinate materials and their installation for each allowance with related materials and installations to ensure that each allowance item is completely integrated and interfaced with related work.

3.3 SCHEDULE OF ALLOWANCES

A. Allowance No. 1:

Lump Sum Allowance for **\$2,500.00** to cover inspection of existing fire rated partitions in work area (corridors, Stairways, shafts) to confirm all penetrations are properly Fire-stopped. Use appropriate fire-stopping material to fill in any open penetrations to confirm fire rating as indicated on the code compliance plan. See the A-102 Keyed Renovation Note 1 on drawing A-102.

*****END OF SECTION 01 21 00*****



FACILITIES
ENGINEERING

WWW.FCS.CORNELL.EDU

ARCHITECTURAL, STRUCTURAL, CIVIL,
ENVIRONMENTAL, MECHANICAL, AND
ELECTRICAL ENGINEERING

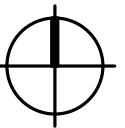
201 HUMPHREYS SERVICE BLDG
ITHACA, NEW YORK 14853-3701

UNAUTHORIZED ALTERATION OF THIS DRAWING IS A
VIOLATION OF THE NEW YORK STATE EDUCATION LAW,
SECTION 7209, SUBDIVISION 2.

ARCH/STRUCT: _____
CIVIL/ENV: _____
ELECTRICAL: _____
MECHANICAL: _____

REVISIONS

4	11/11/2021	ADDENDUM 1
---	------------	------------



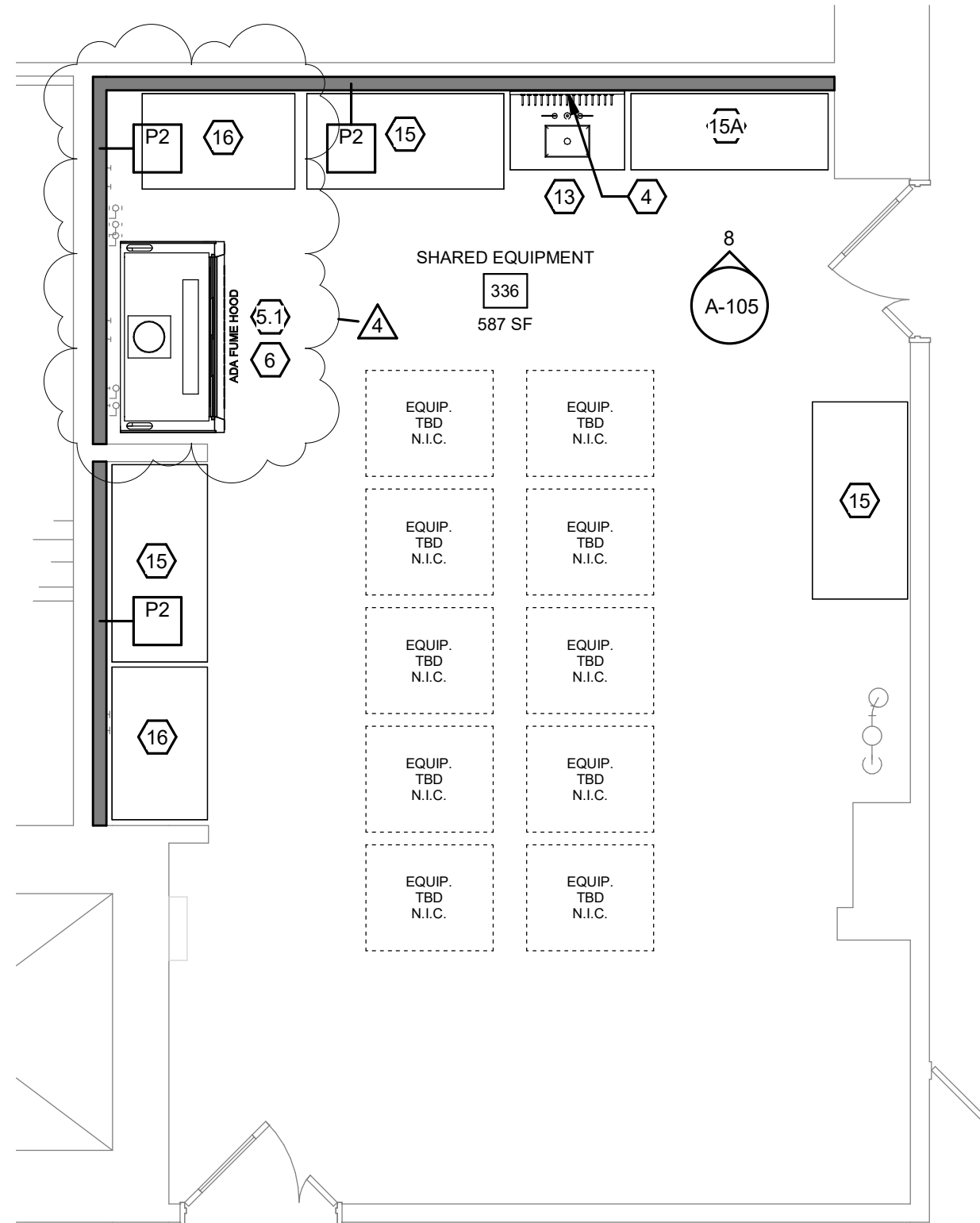
BIOTECHNOLOGY
BUILDING
THIRD FLOOR
LABORATORY
RENOVATION

DATE:	OCTOBER 11, 2021
FACILITY:	1018
DESIGN:	N.HACHMANN
DRAWN:	NH

2/A-102 Revised
ROOM #336
RENOVATION PLAN

AD1-A1
13542959

ARCHIVE BAR CODE



2 ROOM #336 RENOVATION PLAN
SCALE: 1/4" = 1'-0"



FACILITIES
ENGINEERING

WWW.FCS.CORNELL.EDU

ARCHITECTURAL, STRUCTURAL, CIVIL,
ENVIRONMENTAL, MECHANICAL, AND
ELECTRICAL ENGINEERING

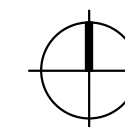
201 HUMPHREYS SERVICE BLDG
ITHACA, NEW YORK 14853-3701

UNAUTHORIZED ALTERATION OF THIS DRAWING IS A
VIOLATION OF THE NEW YORK STATE EDUCATION LAW,
SECTION 7209, SUBDIVISION 2.

ARCH/STRUCT: _____
CIVIL/ENV: _____
ELECTRICAL: _____
MECHANICAL: _____

REVISIONS

4 | 11/11/21 | ADDENDUM 1



BIOTECHNOLOGY
BUILDING
THIRD FLOOR
LABORATORY
RENOVATION

DATE: NOVEMBER 11, 2021
FACILITY: 1018
DESIGN: H. TRAN
DRAWN: EWK

Reference: E-105

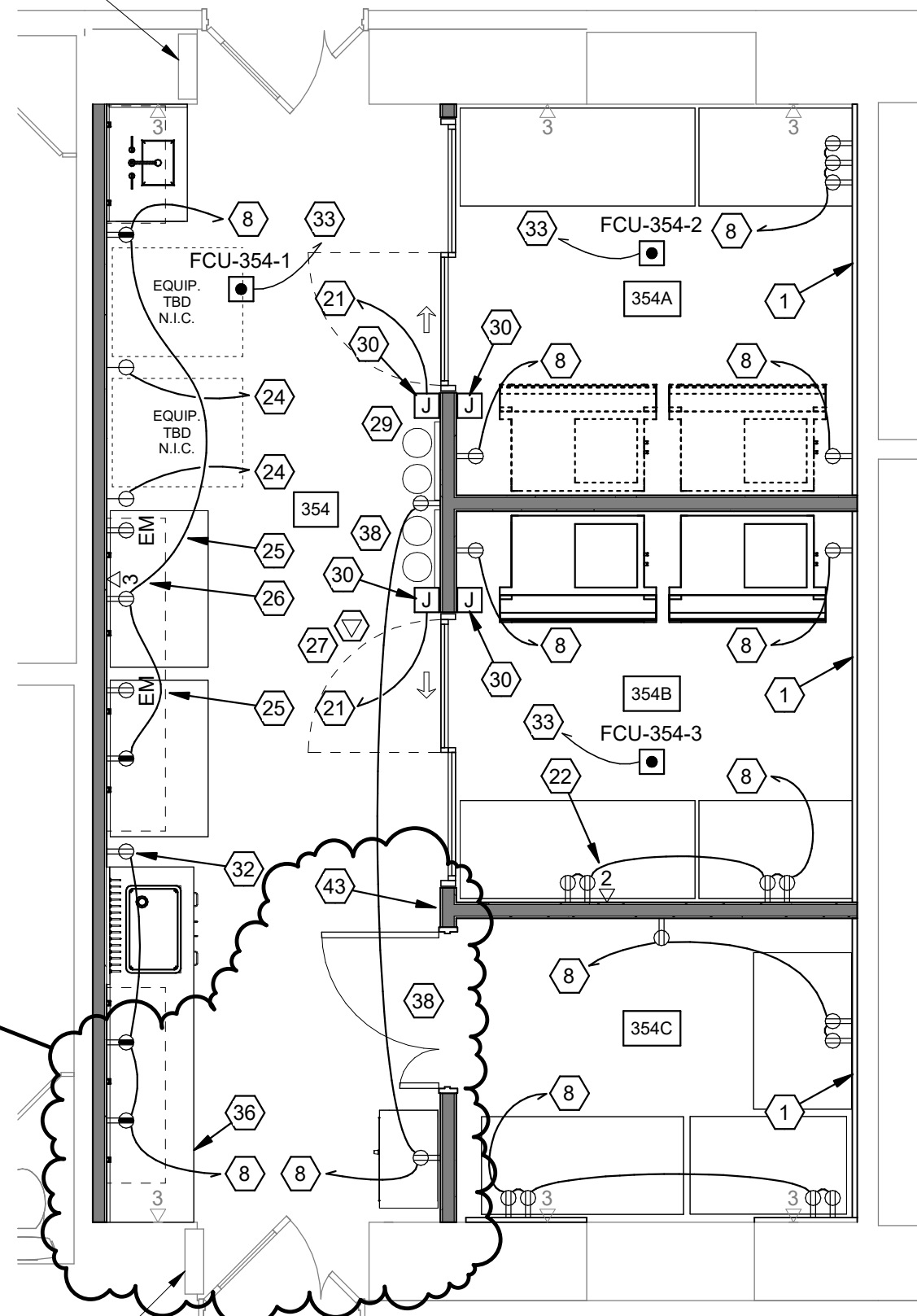
RM. 354 ELECTRICAL
POWER & DATA PLAN

AD1-E1

13542959

ARCHIVE BAR CODE

UP-3E1, SECT 1,
200A MCB, 208Y/120V

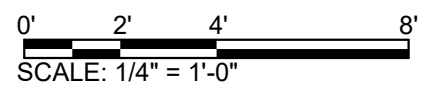


UP-3E1, SECT 2,
200A MCB, 208Y/120V

1 RM. 354 ELECTRICAL POWER & DATA PLAN
SCALE: 1/4" = 1'-0"

E-105 KEYED RENOVATION NOTES (CONT.)

- 27 ON CEILING, PROVIDE A 4"x4" RECESSED BOX FOR AN ACCESS POINT/ WIRELESS DEVICE. FROM BOX, PROVIDE ONE CAT 6A TO THE CIT ROOM. REFER TO GENERAL NOTES ON THIS SHEET FOR ADDITIONAL INFORMATION. ACCESS POINT/ WIRELESS DEVICE TO BE PROVIDED BY CIT. SEE E-101 FOR CIT ROOM LOCATION.
- 28 PROVIDE A PENDANT-MOUNTED 4"x4" BOX FOR AN ACCESS POINT/ WIRELESS DEVICE. FROM BOX, PROVIDE ONE CAT 6A TO THE CIT ROOM. REFER TO GENERAL NOTES ON THIS SHEET FOR ADDITIONAL INFORMATION. ACCESS POINT/ WIRELESS DEVICE TO BE PROVIDED BY CIT. SEE E-101 FOR CIT ROOM LOCATION.
- 29 EXISTING CIT JUNCTION BOX/ PULL BOX ABOVE TO REMAIN.
- 30 PROVIDE (2) RECESSED BOXES 3" FROM DOOR FRAME EDGE TO BOX CENTERLINE, ONE AT 48" AFF AND ONE AT 8" AFF, TO HOUSE TOUCHLESS PLATE HAND AND FOOT SWITCHES FOR MOTION SENSOR SLIDING DOOR. SEE DETAIL 11/ E-102, AND REFER TO SPECIFICATIONS, MANUFACTURER'S SHOP DRAWINGS, AND INSTALLATION INSTRUCTIONS FOR ADDITIONAL INFORMATION.
- 31 PREWIRED LAB BENCH RECEPTS. & RACEWAY BY CASEWORK PROVIDER, TYPICAL.
- 32 PROVIDE A DUPLEX RECEPTACLE 6" BELOW CEILING FOR CONTROL UNIT.
- 33 CIRCUIT (3) NEW FAN COIL UNITS INDICATED TO 20A/1P SPARE CIRCUIT BREAKER LOCATED IN EXISTING PANEL UP-3E1 SECTION 1 OR SECTION 2.
- 34 CIRCUIT NEW FAN COIL UNITS IN ROOM TO A SPARE 20A/1P CIRCUIT BREAKER LOCATED IN EXISTING PANEL UP-3E2.
- 35 MODIFY WALL AS REQUIRED AND REPLACE EXISTING DUPLEX RECEPTACLES WITH LOAD RECEPTACLES.
- 36 ELECTRICAL CONTRACTOR TO PROVIDE 120V POWER CONNECTION TO THE FAN LOCATED IN THE VACUUM CABINET. CIRCUIT TO NEAREST RECEPTACLE CIRCUITRY. INSIDE OF THE VACUUM CABINET, THERE WILL BE A 1.5 HP, 208V, 3 PHASE VACUUM PUMP BY OTHERS. ELECTRICAL CONTRACTOR TO PROVIDE HARDWIRE POWER CONNECTION. SEE NOTE 43.
- 37 AT 42" AFF, MODIFY EXISTING WALL AS REQUIRED AND PROVIDE A RECESS MOUNT RECEPTACLE. CIRCUIT TO A SPARE 20A/1P CIRCUIT BREAKER.
- 38 NEW CONTROL PANELS ABOVE CEILING BY OTHERS. CIRCUIT (2) PANELS TO A SPARE 20A/1P CIRCUIT BREAKER LOCATED IN EXISTING PANEL UP-3E1.
- 39 NEW CONTROL PANEL ABOVE CEILING BY OTHERS. CIRCUIT PANEL TO A SPARE 20A/1P CIRCUIT BREAKER LOCATED IN EXISTING PANEL UP-3L2.
- 40 NEW CONTROL PANEL ABOVE CEILING BY OTHERS. CIRCUIT PANEL TO A SPARE 20A/1P CIRCUIT BREAKER LOCATED IN EXISTING PANEL UP-3L1.
- 41 EXISTING TEMPERATURE CONTROL PANEL TO BE REPLACED BY OTHERS. EXISTING 120V POWER CONNECTION TO REMAIN AND TO BE REUSED.
- 42 PROVIDE 120V POWER CONNECTION TO CONTROL PANEL. CIRCUIT TO A SPARE 20A/1P CIRCUIT BREAKER LOCATED IN EXISTING PANEL UP-3E2.
- 43 AT LOCATION SHOWN, PROVIDE A SQUARD D MAGNETIC STARTER IN A NEMA 1 ENCLOSURE, CLASS 8536 TYPE SAG-12 WITH 3 MELTING ALLOY THERMAL UNITS NO. B10.2 TO CONTROL THE VACUUM PUMP LOCATED IN THE VACUUM PUMP CABINET. FROM STARTER, PROVIDE (4) 12 AWG & (1) 12 AWG GROUND IN 3/4" EMT TO PANEL UP-3E1, SECTION 2. INSIDE OF PANEL, PROVIDE A 20A/3P CIRCUIT BREAKER TO SUPPORT THE MOTOR STARTER. FROM MOTOR STARTER, PROVIDE (4) 12 AWG & (1) 12 AWG GROUND IN 3/4" EMT TO THE VACUUM PUMP. CONTROL WIRING BY THE CONTROL CONTRACTOR.





FACILITIES
ENGINEERING
WWW.FCS.CORNELL.EDU

ARCHITECTURAL, STRUCTURAL, CIVIL,
ENVIRONMENTAL, MECHANICAL, AND
ELECTRICAL ENGINEERING

201 HUMPHREYS SERVICE BLDG
ITHACA, NEW YORK 14853-3701

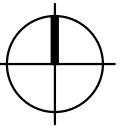
UNAUTHORIZED ALTERATION OF THIS DRAWING IS A
VIOLATION OF THE NEW YORK STATE EDUCATION LAW,
SECTION 7209, SUBDIVISION 2.

ARCH/STRUCT: _____
CIVIL/ENV: _____
ELECTRICAL: _____
MECHANICAL: _____

REVISIONS

4	11/11/21	ADDENDUM 1
---	----------	------------

KEY PLAN



BIOTECHNOLOGY
BUILDING THIRD
FLOOR LABORATORY
RENOVATION

DATE:	NOVEMBER 11, 2021
FACILITY:	1018
DESIGN:	PCO
DRAWN:	E. KOLACKI

2/M-101 & 2/M-103
REVISED ROOM #336
DEMOLITION &
RENOVATION PLAN

AD1-M1
13542959

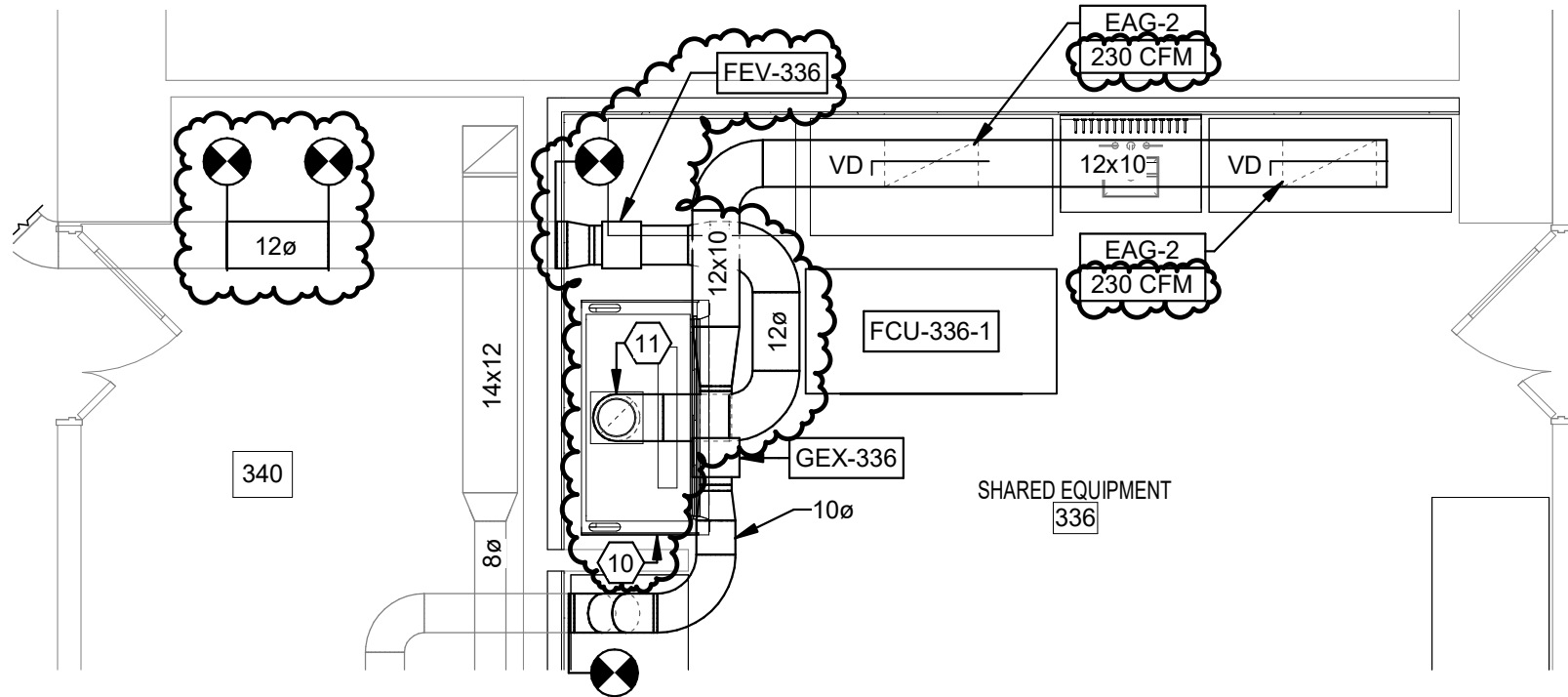
ARCHIVE BAR CODE

AD1-M1 KEYED RENOVATION NOTES

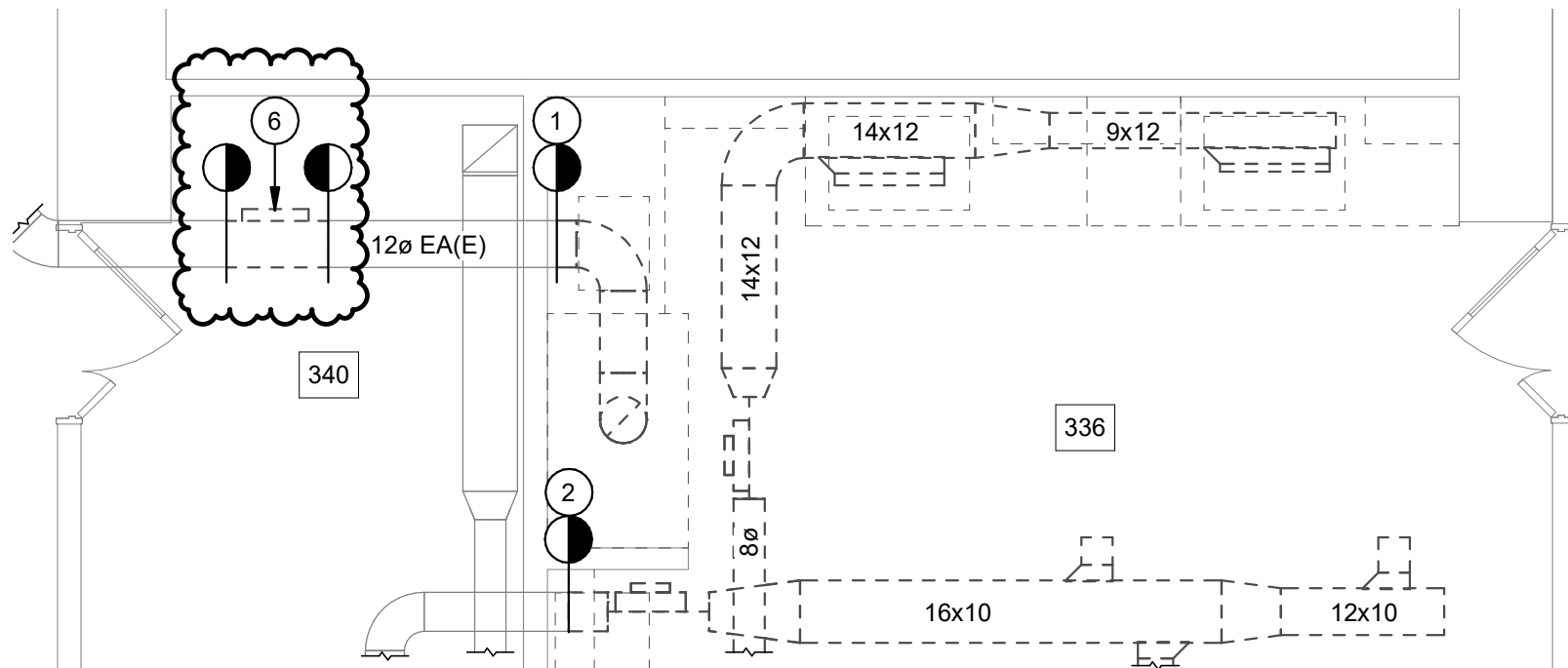
- 10 PROVIDE ASHRAE 110 FUME HOOD ACCEPTANCE TEST PER SCHEDULE ON M-502.
- 11 EXHAUST AIR DOWN TO FUME HOOD, WITH ADJUSTABLE BASE. PROVIDE ESCUTCHEON AT CEILING PENETRATION. REFER TO DETAIL 1/M-401 FOR FLEXIBLE DUCT CONNECTION DETAIL.

AD1-M1 KEYED DEMOLITION NOTES

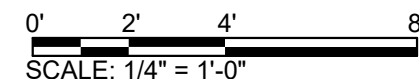
- 1 REMOVE FUME HOOD AND EXHAUST DUCT UP TO WALL PENETRATION. PREPARE EXHAUST DUCT FOR RECONNECTION.
- 2 REMOVE EXISTING SUPPLY AND EXHAUST DUCTWORK, AND AIR VALVES. PREPARE SUPPLY/EXHAUST MAINS FOR RE-CONNECTION.
- 6 REMOVE AIR VALVE AND ASSOCIATED CONTROLS. PATCH DUCTWORK TO MATCH EXISTING SIZE.



2 ROOM #336 - MECHANICAL DUCTWORK RENOVATION PLAN
SCALE: 1/4" = 1'-0"



1 AD1-M1-ROOM #336 - MECHANICAL DUCTWORK DEMOLITION PLAN
SCALE: 1/4" = 1'-0"





FACILITIES
ENGINEERING

WWW.FCS.CORNELL.EDU

ARCHITECTURAL, STRUCTURAL, CIVIL,
ENVIRONMENTAL, MECHANICAL, AND
ELECTRICAL ENGINEERING

201 HUMPHREYS SERVICE BLDG
ITHACA, NEW YORK 14853-3701

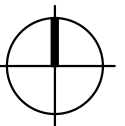
UNAUTHORIZED ALTERATION OF THIS DRAWING IS A
VIOLATION OF THE NEW YORK STATE EDUCATION LAW,
SECTION 7209, SUBDIVISION 2.

ARCH/STRUCT: _____
CIVIL/ENV: _____
ELECTRICAL: _____
MECHANICAL: _____

REVISIONS

4 | 11/11/21 | ADDENDUM 1

KEY PLAN



BIOTECHNOLOGY
BUILDING THIRD
FLOOR LABORATORY
RENOVATION

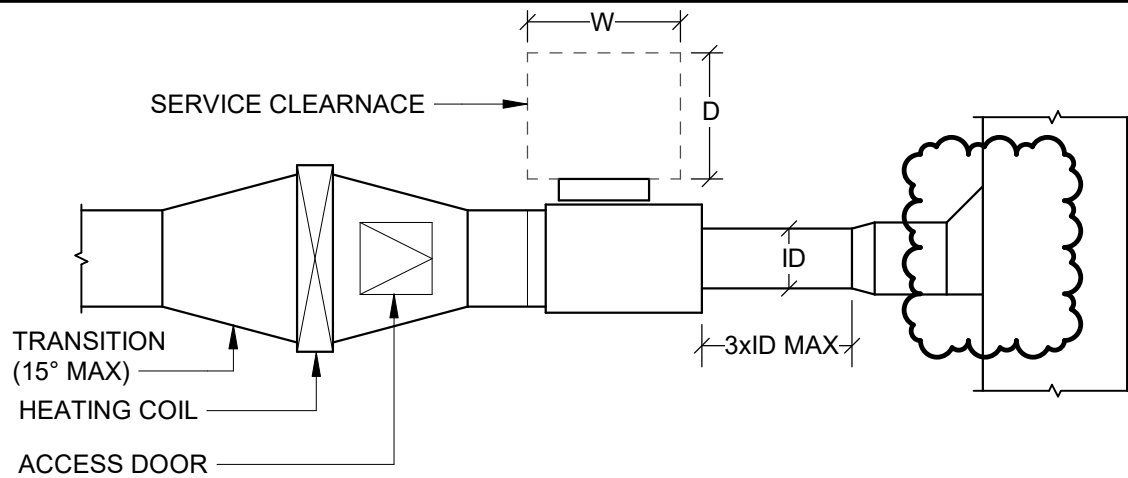
DATE: NOVEMBER 11, 2021
FACILITY: 1018
DESIGN: PCO
DRAWN: E. KOLACKI

1/M-104 REVISED
PARTIAL THIRD
FLOOR PIPING
RENOVATION PLAN
5/M401 REVISED
DETAIL

AD1-M2

13542959

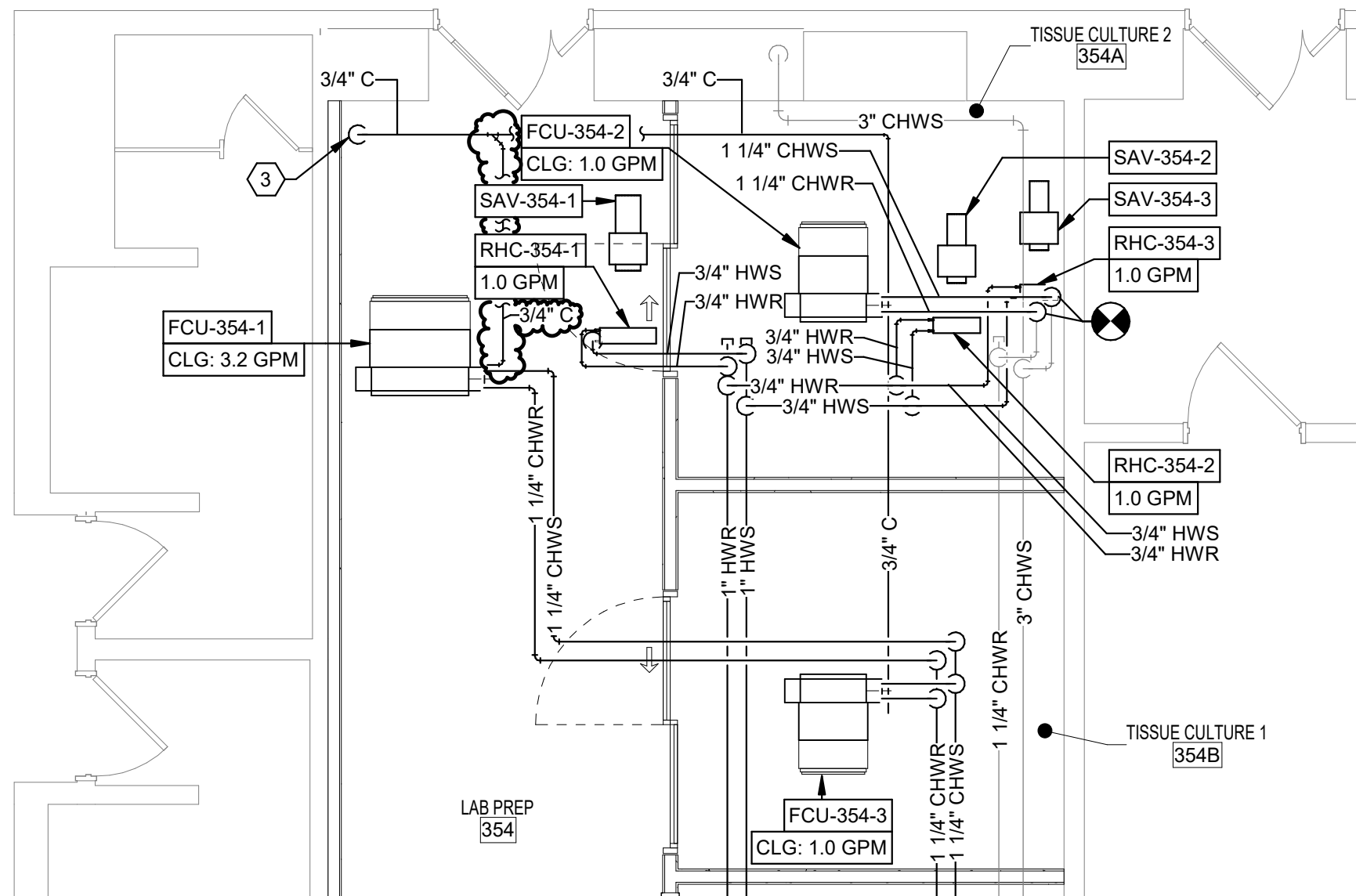
ARCHIVE BAR CODE



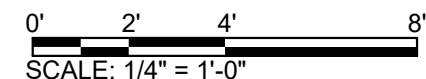
NOTES:

- DO NOT INSTALL ELBOWS IN THE HIGH VELOCITY REGION OF THE DEVICE.
- SERVICE CLEARANCE FOR ELECTRICAL DEVICES: COORDINATE SERVICE ACCESS WITH CONTROLS CONTRACTOR
D = 3 FEET MIN
W = 30-INCHES OR WIDTH OF ELECTRICAL DEVICE WHICHEVER IS GREATER
- IF RUNOUT IS LONGER THAN THREE TIMES THE AIR VALVE INLET DIAMETER (ID), INCREASE INLET DUCT SIZE BY 2-INCHES IN DIAMETER.

2 AD1-M2-AIR TERMINAL DEVICES
NOT TO SCALE



1 PARTIAL THIRD FLOOR - MECHANICAL PIPING RENOVATION PLAN
SCALE: 1/4" = 1'-0"



RFI/ Response Index	Page/ Dwg./Spec./Rep. Number	Section/ Paragraph/Topic	RFI	Design Team Response
1	A-104	RCP	Is there a specification for Note #1, A104 service panels?	See Addendum No. 1, Item 4.