

**SUBJECT: Windows****BULLETIN 08**

OWNER Cornell University (CU)  
 ARCHITECT Goody Clancy & Associates (GCA)  
 CONTRACTOR Whiting-Turner (WT)  
 CONSULTANT

**PROJECT:** Cornell University Balch Hall Renovation**DATE:** 9/26/22

**TO:** The Whiting-Turner Contracting Company  
 1720 Spillman Drive Suite 180  
 Bethlehem, PA 18015

**ARCHITECT'S PROJ. NO:** 07400  
**CONTRACT DATE:**  
**CONTRACT FOR:**

**ATTN:** Zack Lynn**SUPPLEMENTAL INSTRUCTIONS**

The work shall be carried out in accordance with the supplemental instructions described herein issued in accordance with the Contract Documents without change in the Contract Sum or Contract Time. Prior to proceeding in accordance with these instructions, indicate your acceptance of these instructions for minor change to the Work as consistent with the Contract Documents and return a copy to the Architect.

 (SI)**PROPOSAL REQUEST**

Please submit an itemized quotation for the changes in the Contract Sum and/or Contract Time incidental to proposed modifications to the Contract Documents described herein. THIS IS NOT A CHANGE ORDER NOR A DIRECTION TO PROCEED WITH THE WORK DESCRIBED HEREIN.

 (PR)**CONSTRUCTION CHANGE DIRECTIVE**

You are hereby directed to make change(s) in the Contract as described herein.

 (CCD)**PROPOSED ADJUSTMENTS**

1. The proposed basis of adjustments to the Contract Sum is:
  - Lump sum (increase) (decrease) of \$
  - Unit Price of \$\_\_\_\_\_ per \_\_\_\_\_
  - Time & materials not to exceed \$
  - Final cost to be determined
2. The Contract Time is proposed to remain unchanged

When signed by the Owner and architect and received by the Contractor, this document becomes effective IMMEDIATELY as a Construction Change Directive (CCD), and the Contractor shall proceed with the changes as described herein.

Signature by the Contractor indicates agreement with the proposed adjustments in Contract Sum and Contract Time set forth in this Construction Change Directive.

**Origin:** This Bulletin is an update to Bulletin 6, and captures corrections and revisions to window schedule and scope due to (4) RFIs:

1. In alignment with RFI 15 "Glass Type & Window Schedule Clarifications", corrections and clarifications have been made to the window schedule.
2. In alignment with RFI #22 "Bath Area 3184", window glazing is revised to be tempered due to existing conditions differing from documents.
3. Related to RFI #24 "GL-6 Glass Type", this Bulletin clarifies fire-rated window assemblies must be provided in addition to fire-rated glazing GL-6.
4. In response to RFI #30 "GL-4 and GL-5 Glass Types", revisions to the glass types have been made.

**SPECIFICATION CHANGES:**

08 51 30

- Added Steel Window Section

08 81 23

- Revised glazing types GL4, GL5, GL6

**DRAWING CHANGES:**

X0.01

- Add Sheet A6.83A to Drawing List

A2.16

- Corrected window numbers.

A2.18

- Corrected window numbers.

A6.70

- Revised Glazing Type GL6.

A6.71

- Corrected window numbers.

A6.73

- Corrected window sash numbers.
- Included window sashes missing from window schedule.
- Revised window repair scope and glazing type for Window NB-10, 5-04.
- Revised windows on elevation NB-09 and NB-16 to include fire-rated window assembly.

A6.74

- Revised glazing type for Window NB-19, 3-01 from GL2 to GL7.

A6.76

- Corrected window numbers.
- Included window missing from window schedule.
- Moved CT-09 windows from this sheet to A6.77.

A6.77

- Corrected window numbers.
- Removed duplicate window units.

A6.78

- Deleted louver from appearing in window schedule.
- Revised windows on elevation SB-07 to include fire-rated window assembly.

A6.79

- Corrected window numbers.
- Included windows missing from window schedule.

A6.80

- Included windows missing from window schedule.

A6.83A

- Added sheet for fire-rated window details.

**Attachments:**

Drawing Sheets:

X0.01, A2.16, A2.18, A6.70, A6.71, A6.73, A6.74, A6.76, A6.77, A6.78, A6.79, A6.80, A6.83A

Specification Sections:

Table of Contents (TOC), 08 51 30 STEEL WINDOWS, 08 81 23 EXTERIOR GLASS GLAZING

**End of Bulletin 08**

Issued by:



9/6/22

Architect

Date:

Accepted by:

Contractor

Date

Accepted by:

Owner

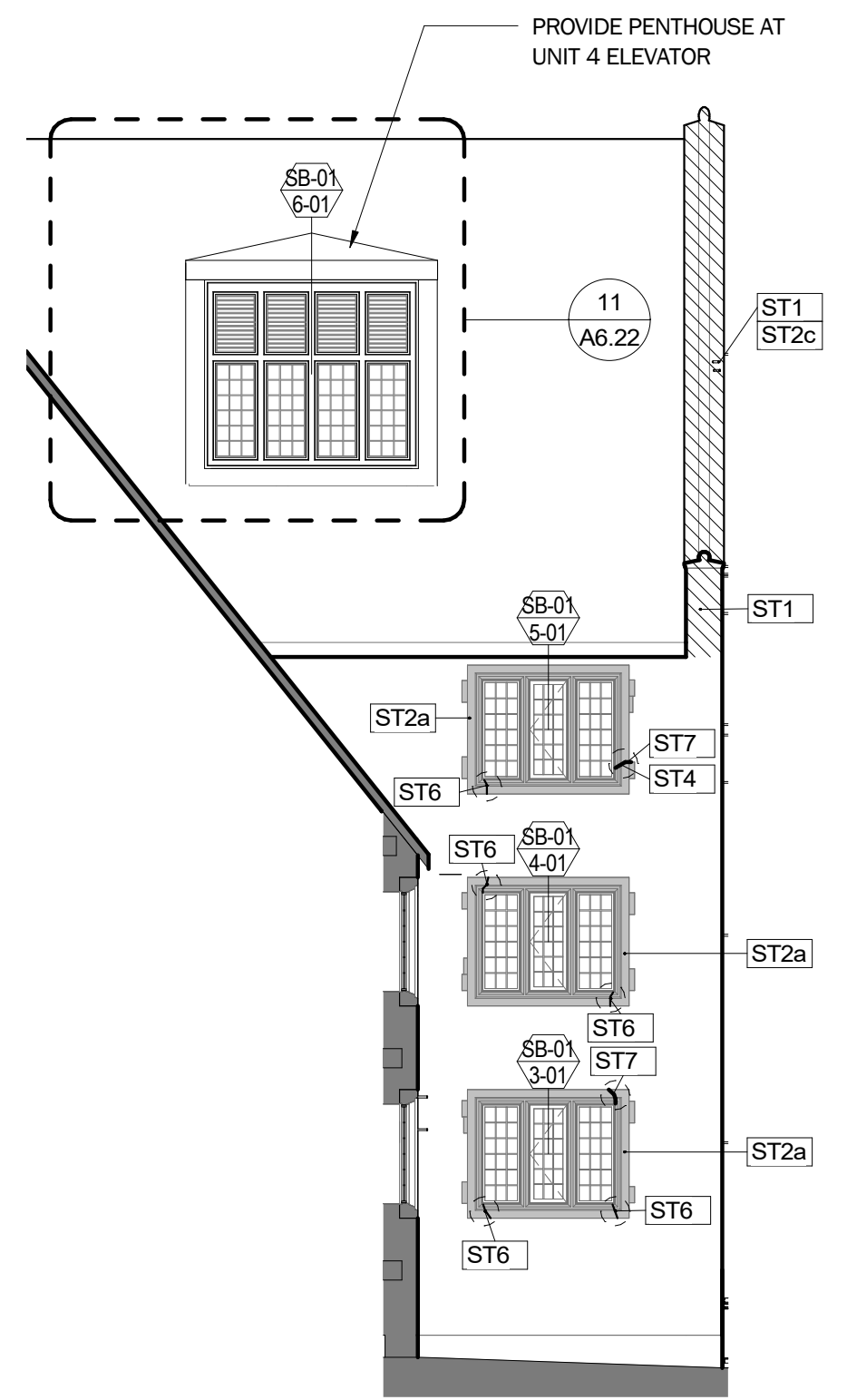
Date



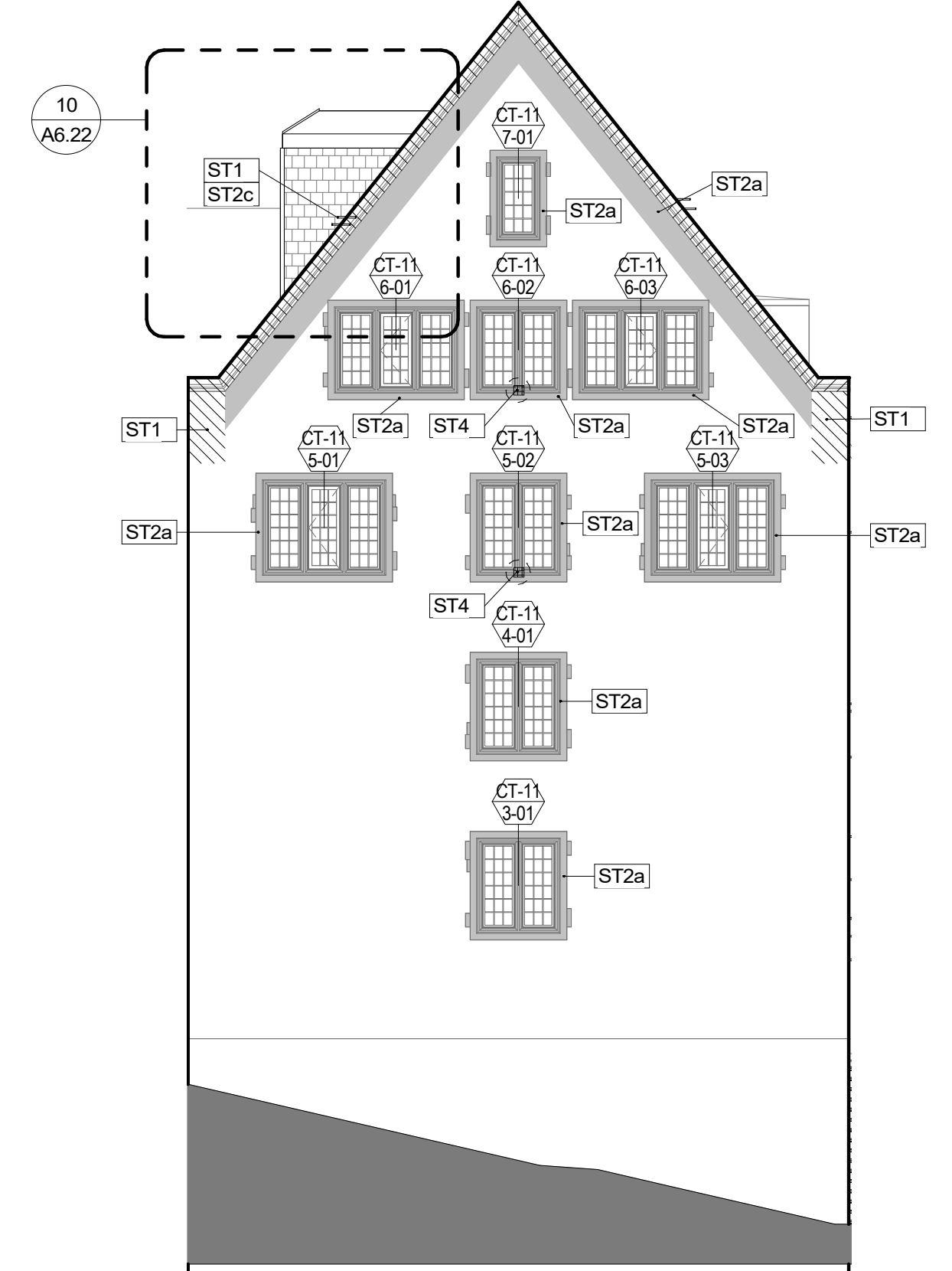
9/26/2022 12:31:02 PM C:\Users\olivia.huang\OneDrive - Goody, Clancy & Associates, Inc\Documents\00\_Revit\Local\ARCH\_07400-Cornell-Balch\_R21\_CENTRAL\_Olivia.huang@goodyclancy.com.rvt

**ELEVATION GENERAL NOTES**

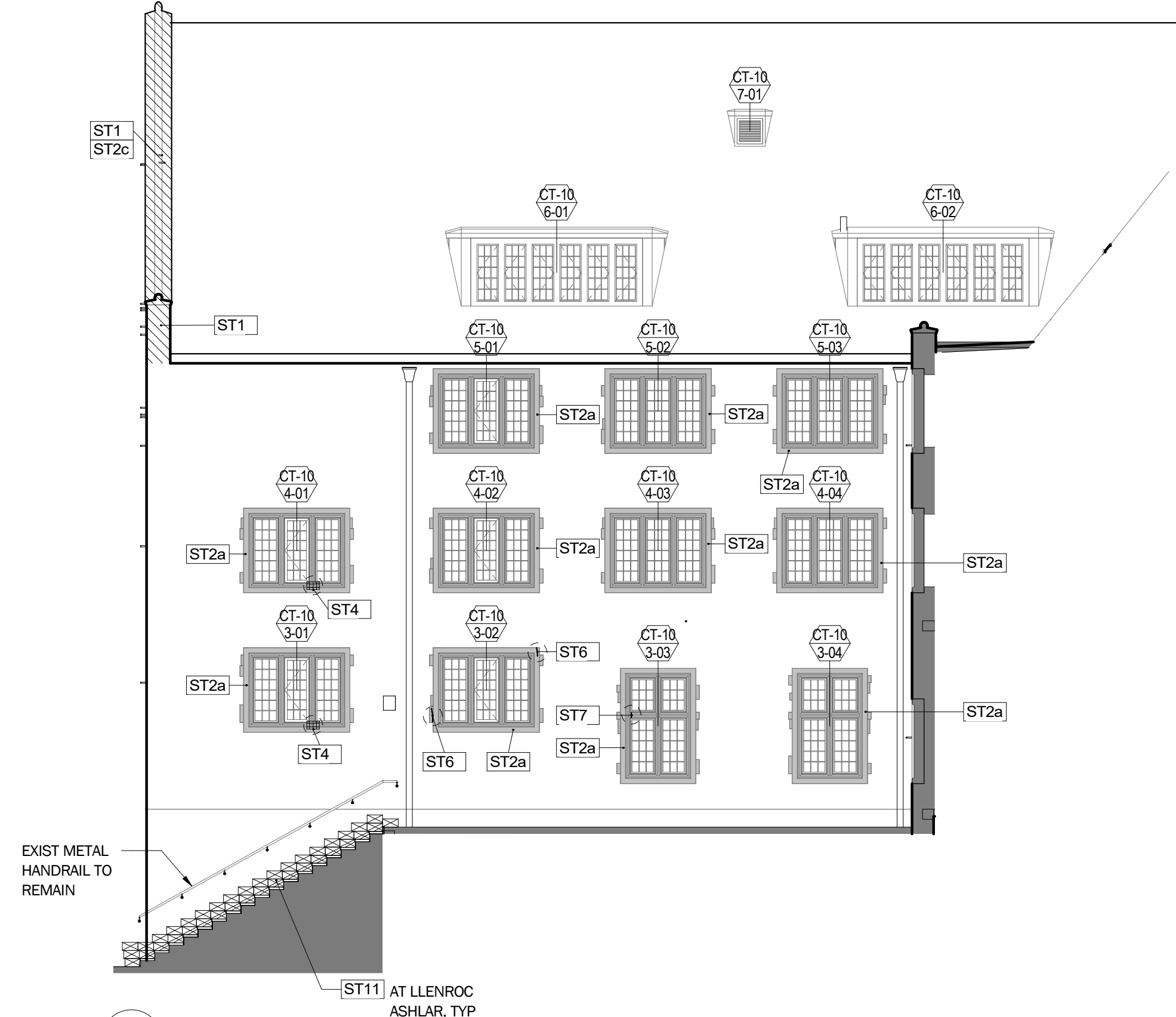
1. REFER TO SHEET A2.10 FOR ALL REPAIR NOTES, SCOPE LEGENDS, KEY AND ADD ALTERNATES
2. REFER TO DETAIL 07/A2.11 FOR MASONRY REBUILD SECTIONS AT THE ROOF
3. REFER TO A0.01 FOR ALL SITE STAIRS, RETAINING WALLS AND WALKWAYS
4. REFER TO A1.17 SERIES FOR ROOF SCOPE OF WORK



6 SOUTH BALCH ELEVATION 01  
A2.16 Scale: 1/8" = 1'-0"



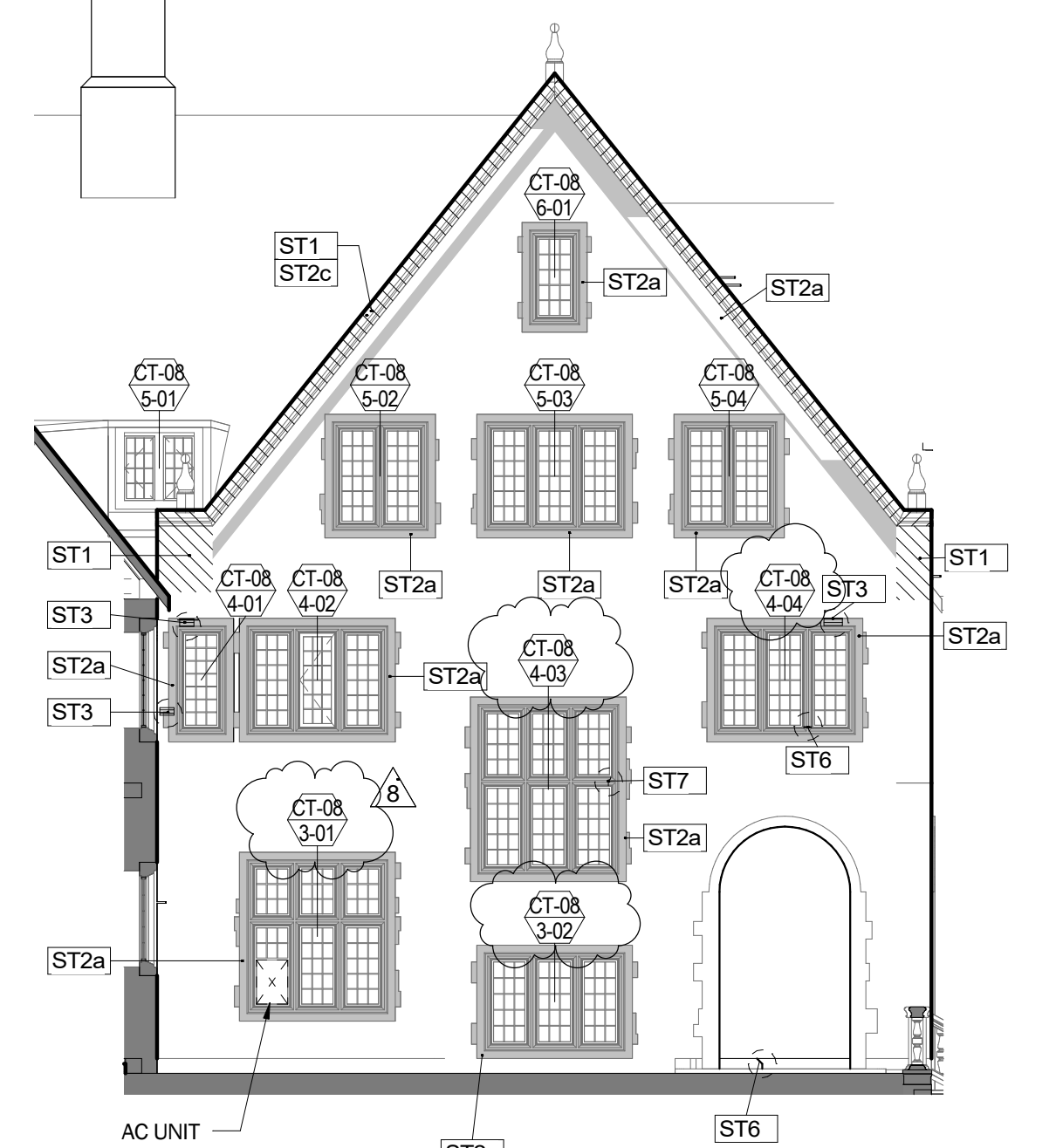
5 COURTYARD ELEVATION 11  
A2.16 Scale: 1/8" = 1'-0"



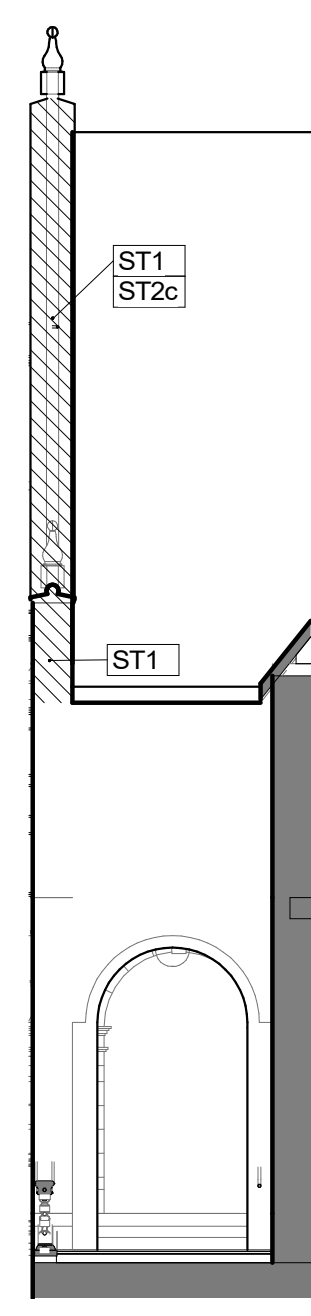
4 COURTYARD ELEVATION 10  
A2.16 Scale: 1/8" = 1'-0"



3 COURTYARD ELEVATION 09  
A2.16 Scale: 1/8" = 1'-0"

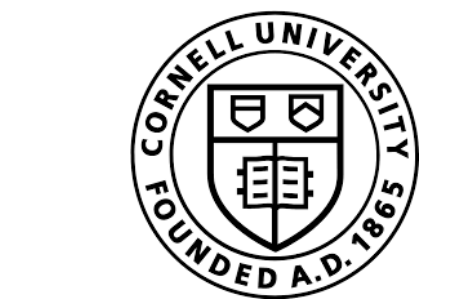


2 COURTYARD ELEVATION 08  
A2.16 Scale: 1/8" = 1'-0"



1 COURTYARD ELEVATION 07  
A2.16 Scale: 1/8" = 1'-0"

REFER TO SHEET A0.01 FOR SCOPE AT EXISTING AREAWAY  
PATCH CONCRETE AT AREA OF REMOVED RAILINGS WITH ST3 REPAIR, TYPICAL (6) LOCATIONS  
REFER TO SHEET A0.01 FOR SCOPE AT EXISTING AREAWAY



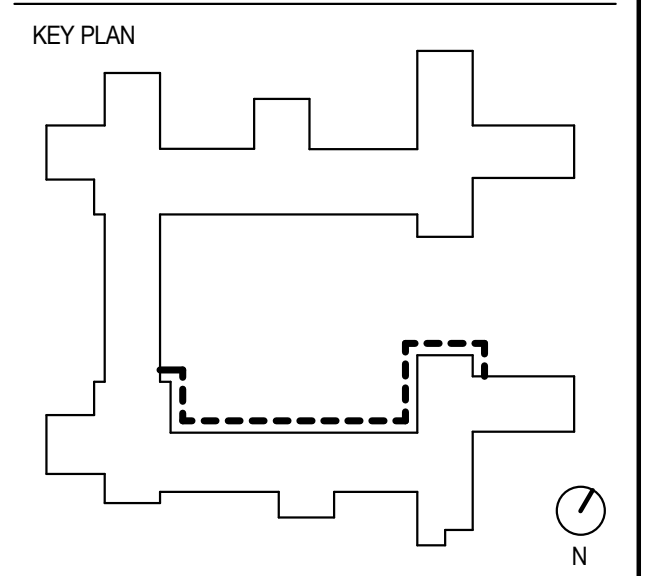
**BALCH HALL RENOVATION**  
**Cornell University**

600 Thurston Avenue  
Ithaca, New York 14853

**GOODYCLANCY**  
ARCHITECTURE / PLANNING / PRESERVATION  
420 Boylston Street Boston, Massachusetts 02116-3866  
p. 617.262.2760 f. 617.262.9512  
www.goodyclancy.com

CONSULTANT

STAMP



**Construction Documents**

ISSUED: 11/5/2021

REVISIONS

NO.	DATE	DESCRIPTION	BY

**ENLARGED ELEVATIONS - SOUTH BALCH**

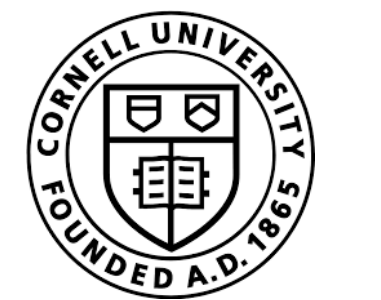
COPYRIGHT © 2021 GOODY CLANCY & ASSOCIATES  
GOODY CLANCY PROJECT NUMBER: 07400

DRAWN: MTB DATE: 11/5/2021  
CHECKED: JV SCALE: As indicated  
DRAWING NO.:

**A2.16**

9/26/2022 12:31:29 PM C:\Users\olivia.huang\OneDrive - Goody, Glancy & Associates, Inc\Documents\00\_Revit\Local\ARCH\_074\00-Cornell\Balch\_R21\_CENTRAL\_Olivia.huang@goodyclancy.com.rvt

- ELEVATION GENERAL NOTES**
1. REFER TO SHEET A2.10 FOR ALL REPAIR NOTES, SCOPE LEGENDS, KEY AND ADD ALTERNATES
  2. REFER TO DETAIL 07/A2.11 FOR MASONRY REBUILD SECTIONS AT THE ROOF
  3. REFER TO A0.01 FOR ALL SITE STAIRS, RETAINING WALLS AND WALKWAYS
  4. REFER TO A1.17 SERIES FOR ROOF SCOPE OF WORK

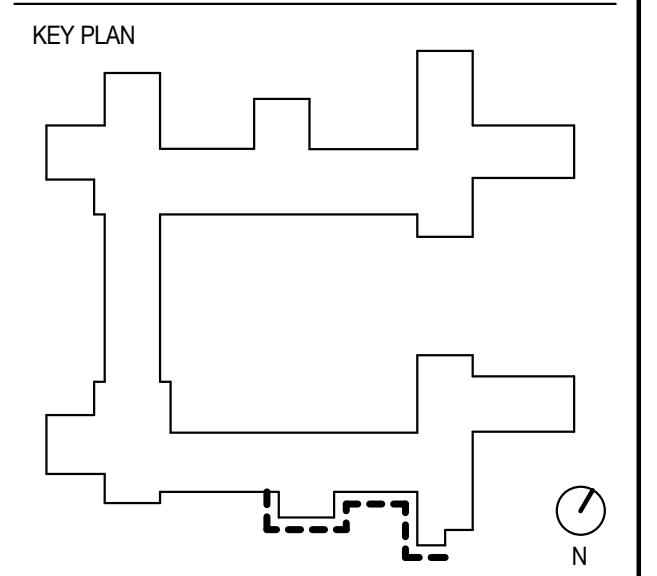


**BALCH HALL RENOVATION**  
Cornell University  
600 Thurston Avenue  
Ithaca, New York 14853

**GOODYCLANCY**  
ARCHITECTURE / PLANNING / PRESERVATION  
420 Boylston Street Boston, Massachusetts 02116-3866  
p. 617.262.2760 f. 617.262.9512  
www.goodyclancy.com

CONSULTANT

STAMP



Construction Documents  
ISSUED: 11/5/2021

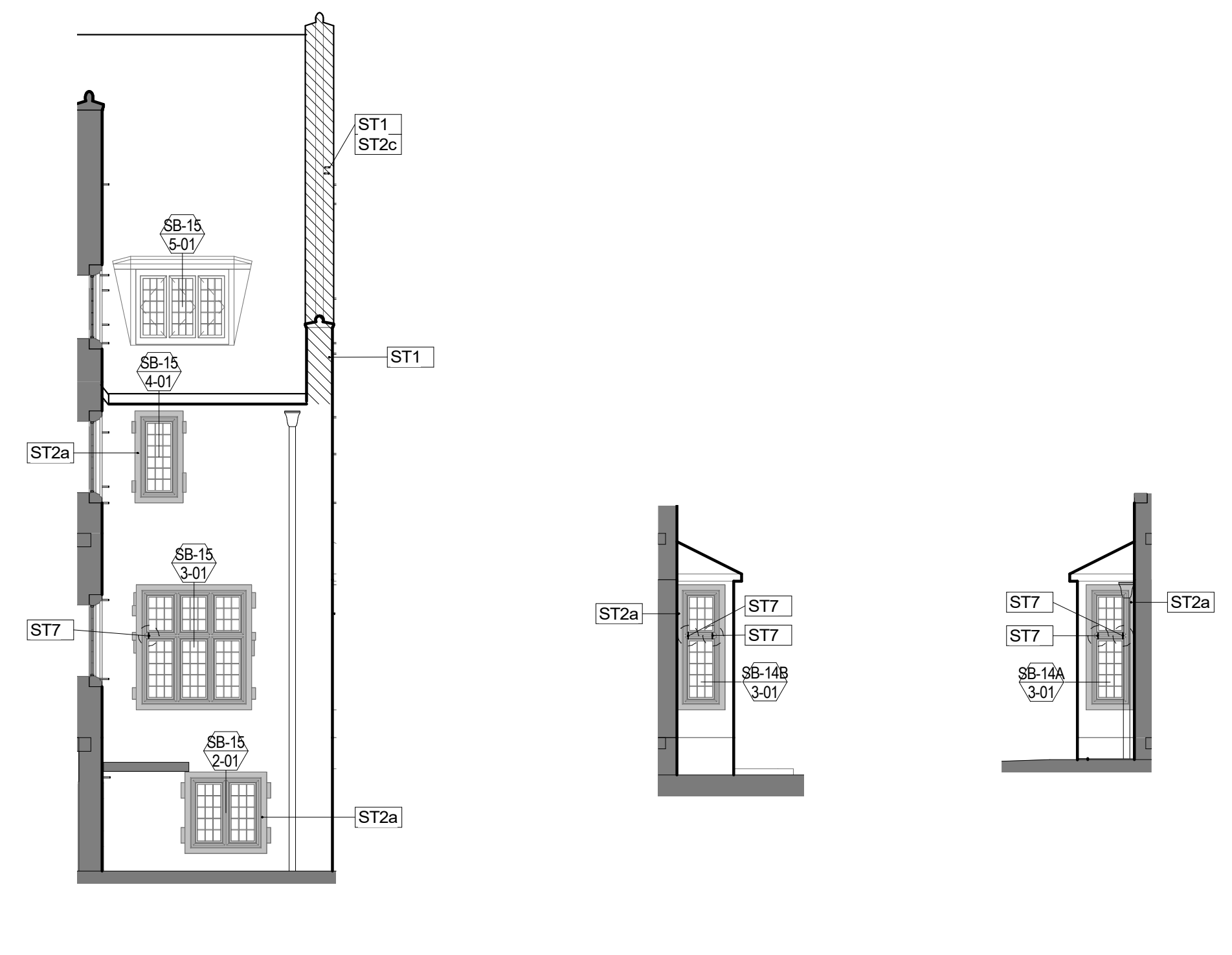
REVISIONS

NO.	DATE	DESCRIPTION	BY

**ENLARGED ELEVATIONS - SOUTH BALCH**

COPYRIGHT © 2021 GOODY CLANCY & ASSOCIATES  
GOODY CLANCY PROJECT NUMBER: 07400

DRAWN: MTB DATE: 11/5/2021  
CHECKED: JV SCALE: As indicated  
DRAWING NO.:



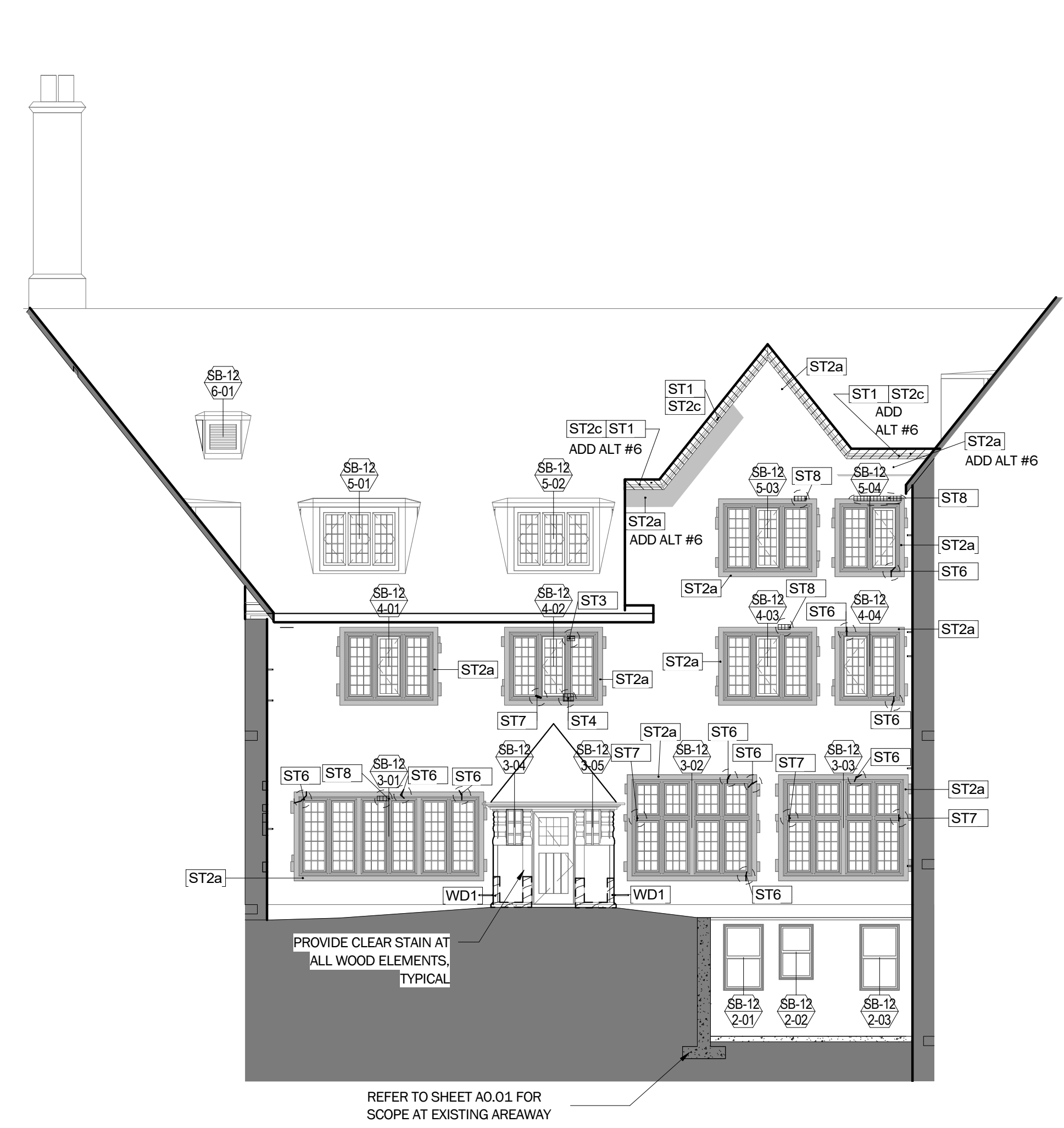
10 SOUTH BALCH ELEVATION 15  
A2.18 Scale: 1/8" = 1'-0"

9 SOUTH BALCH ELEVATION 14-B  
A2.18 Scale: 1/8" = 1'-0"

8 SOUTH BALCH ELEVATION 14-A  
A2.18 Scale: 1/8" = 1'-0"

7 SOUTH BALCH ELEVATION 14  
A2.18 Scale: 1/8" = 1'-0"

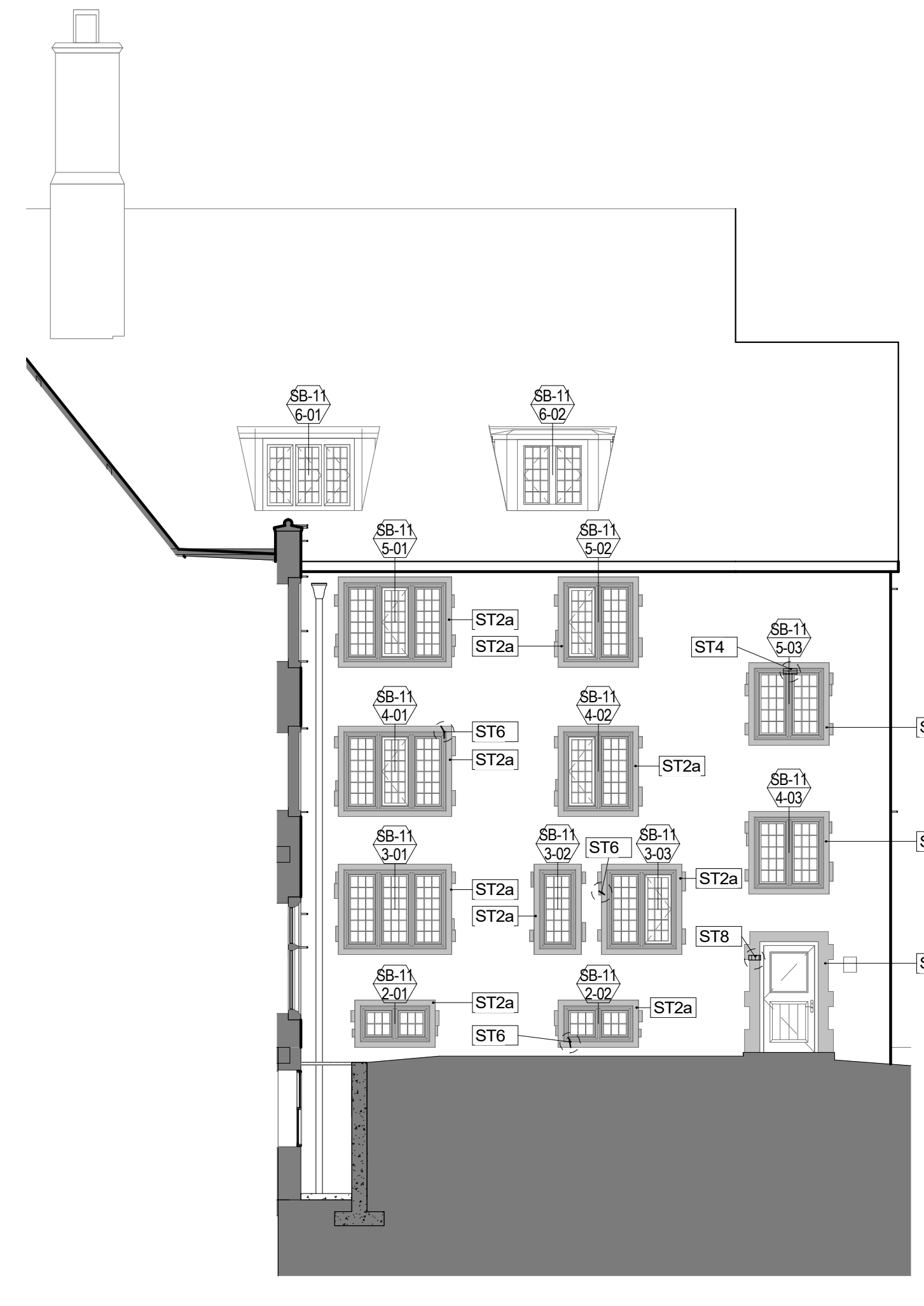
6 SOUTH BALCH ELEVATION 13  
A2.18 Scale: 1/8" = 1'-0"



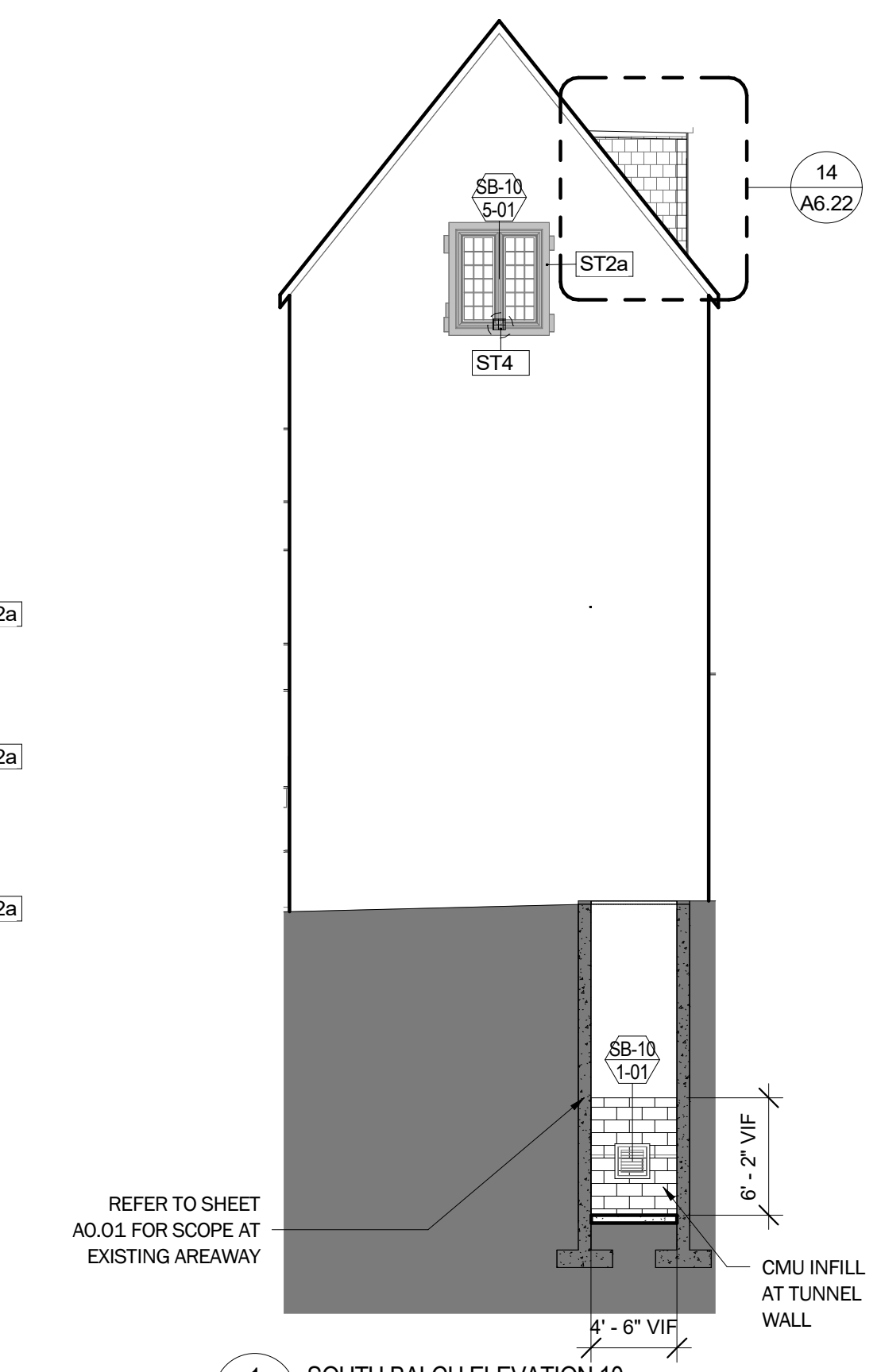
5 SOUTH BALCH ELEVATION 12-B  
A2.18 Scale: 1/8" = 1'-0"

4 SOUTH BALCH ELEVATION 12-A  
A2.18 Scale: 1/8" = 1'-0"

3 SOUTH BALCH ELEVATION 12  
A2.18 Scale: 1/8" = 1'-0"



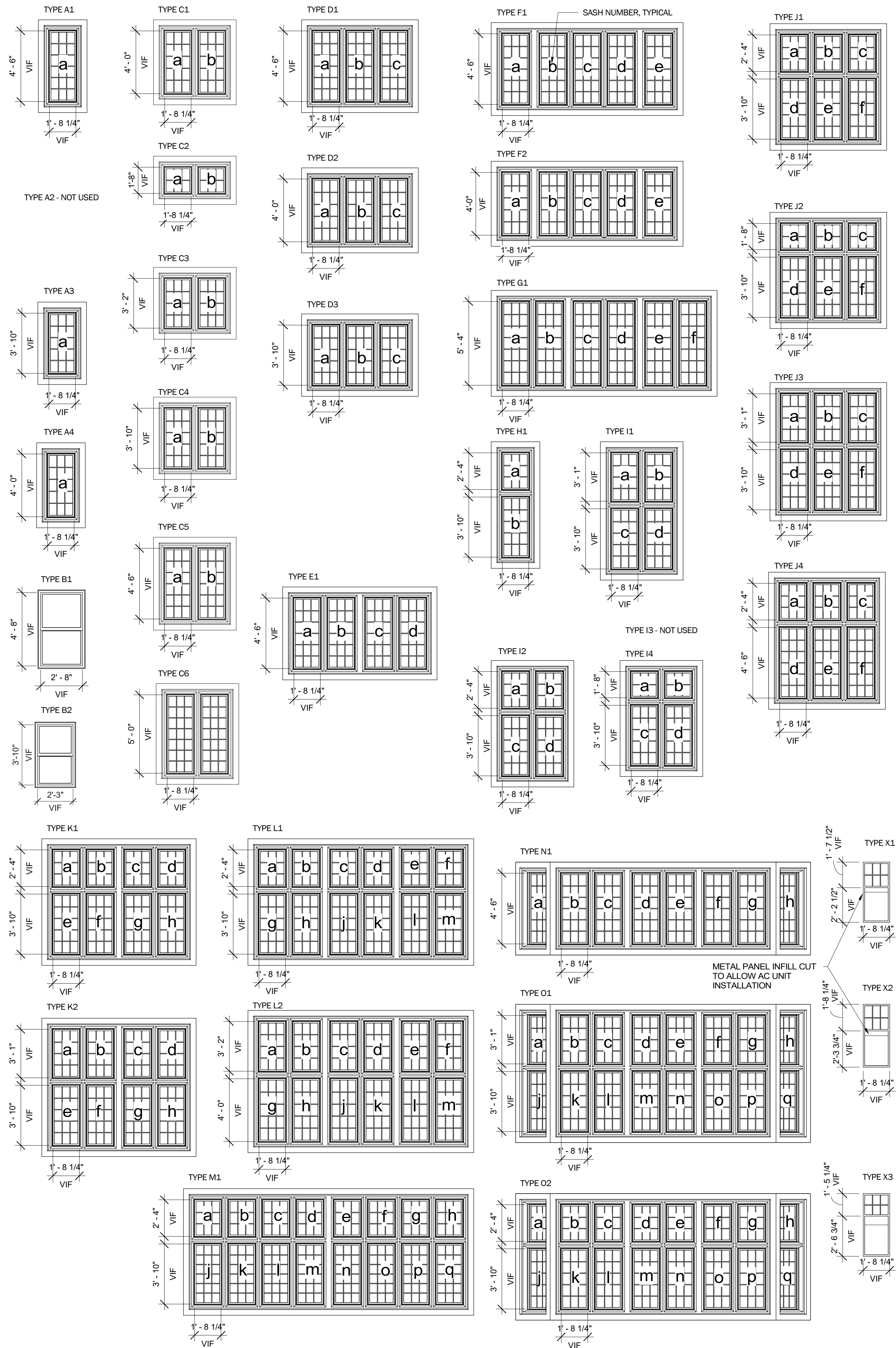
2 SOUTH BALCH ELEVATION 11  
A2.18 Scale: 1/8" = 1'-0"



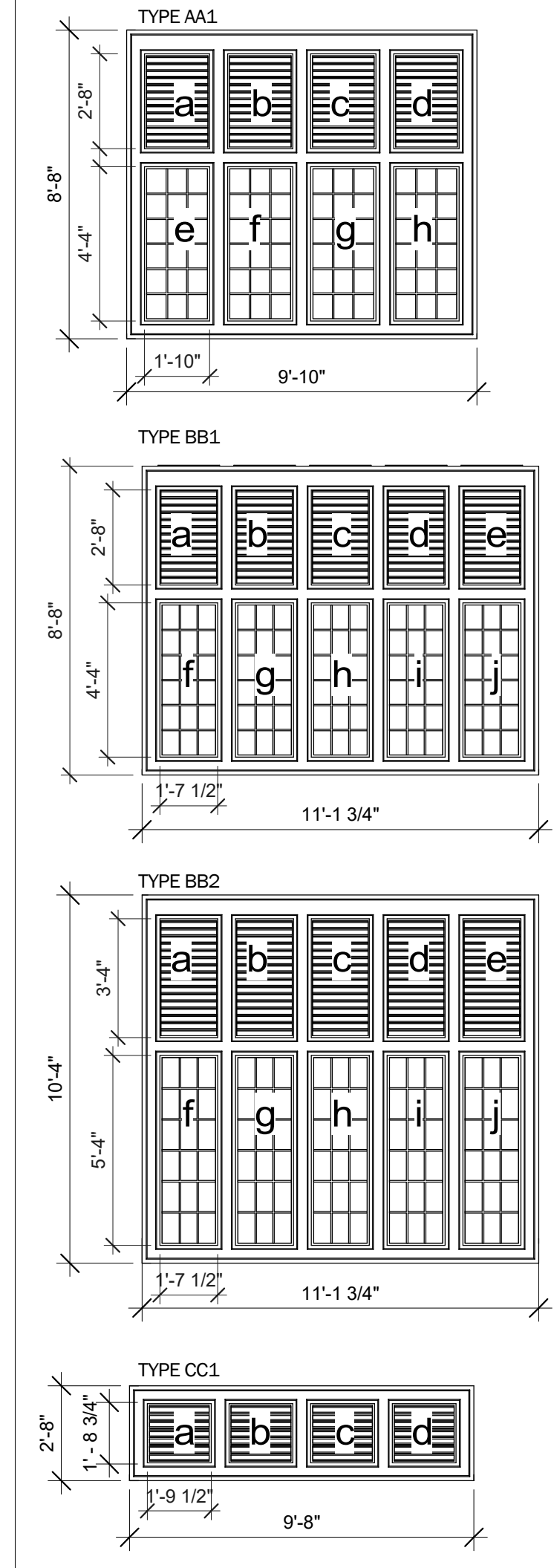
1 SOUTH BALCH ELEVATION 10  
A2.18 Scale: 1/8" = 1'-0"

**A2.18**

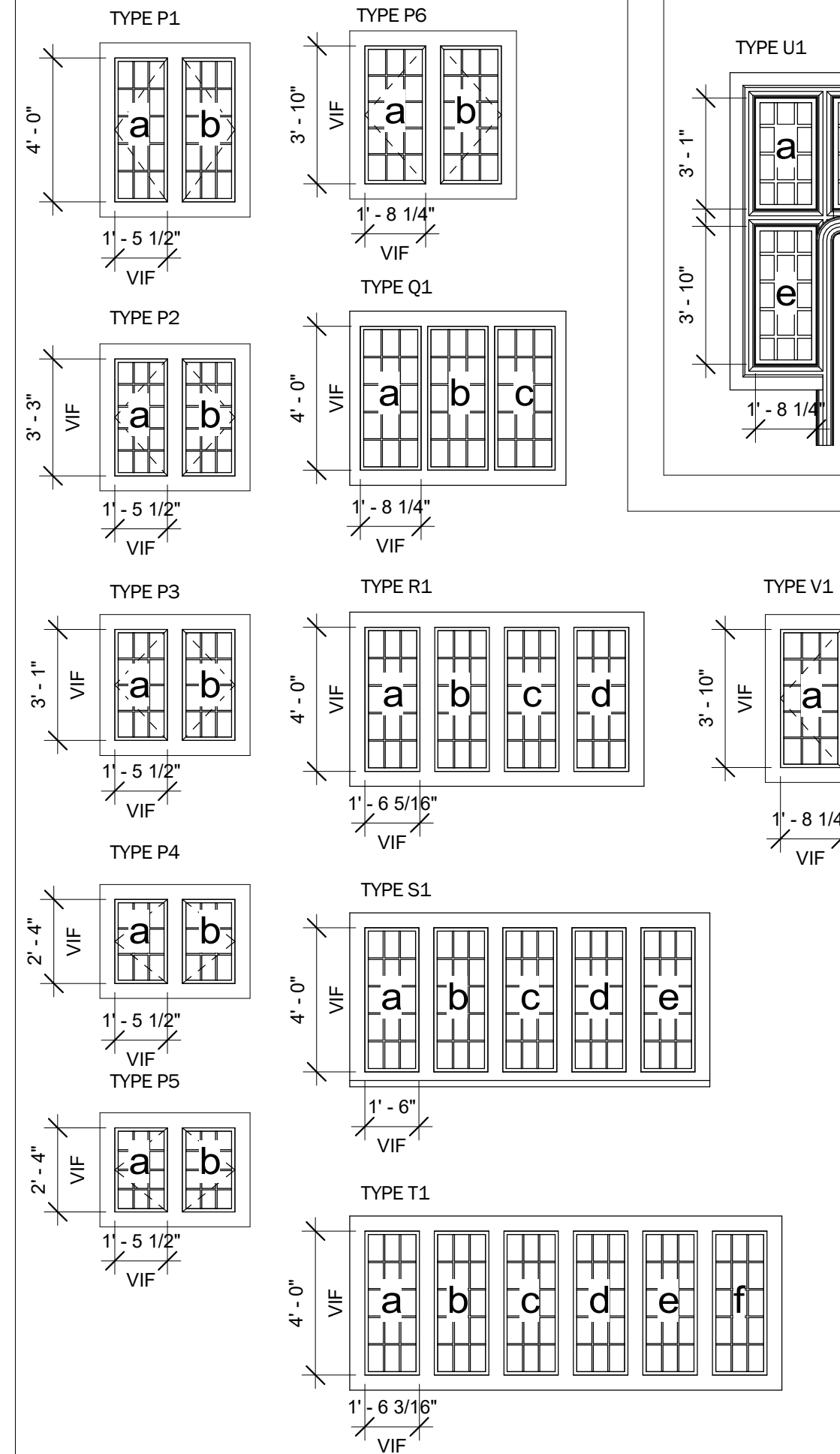
**WINDOW TYPES AT STONE FACADES**



**WINDOW/ LOUVER ASSEMBLY TYPE**



**WINDOW TYPES AT DORMERS**



**WINDOW REPAIR SCOPE**

- W1. REPLACEMENT WINDOWS, TYPICAL**
- REMOVE EXISTING STEEL WINDOWS, FRAMES, AND ALL ASSOCIATED ATTACHMENTS INCLUDING INSECT SCREENS AND SECURITY GRILLES.
  - INSTALL EXTRUDED ALUMINUM, THERMALLY BROKEN WINDOW AND FRAME.
  - ALL WINDOWS SHALL BE FIXED, UNLESS OTHERWISE NOTED. REFER TO WINDOW SCHEDULE FOR LOCATION OF CASEMENT WINDOWS.
  - ALL CASEMENT WINDOWS SHALL RECEIVE FIXED, INTERIOR INSECT SCREENS.
  - REPLACE PERIMETER SEALANT (METAL TO STONE) 100%.
  - PROVIDE SPECIFIED IGU AND PROVIDE GLAZING BEAD ON INTERIOR SIDE
- W2. REPLACEMENT WINDOWS AT AREAWAYS**
- REMOVE EXISTING WOOD DOUBLE HUNG WINDOWS, FRAMES, AND ALL ASSOCIATED ATTACHMENTS INCLUDING PULLEYS, CHAINS, AND COUNTERWEIGHTS.
  - INSTALL EXTRUDED ALUMINUM, THERMALLY BROKEN WINDOW AND FRAME.
  - ALL WINDOWS SHALL BE FIXED.
  - INSTALL SPECIFIED IGU AND PROVIDE GLAZING BEAD ON INTERIOR SIDE
  - REPLACE PERIMETER SEALANT (METAL TO STONE) 100%.
- W3. REPLACEMENT WINDOWS AT SHAFTS**
- REMOVE EXISTING STEEL WINDOWS, FRAMES, AND ALL ASSOCIATED ATTACHMENTS INCLUDING INSECT SCREENS AND SECURITY GRILLES.
  - INSTALL EXTRUDED ALUMINUM, THERMALLY BROKEN WINDOW AND FRAME.
  - ALL WINDOWS SHALL BE FIXED.
  - PROVIDE SPECIFIED IGU AND PROVIDE GLAZING BEAD ON EXTERIOR SIDE
  - PROVIDE ALUMINUM SHADOW BOX ON INTERIOR SIDE.
  - REPLACE PERIMETER SEALANT (METAL TO STONE) 100%.
- W4. NOT USED**
- W5. DORMER WINDOWS, EXISTING**
- EXISTING DORMER WINDOWS SHALL REMAIN, UNLESS OTHERWISE NOTED
  - REPLACE GLAZING PER WINDOW SCHEDULE AND PROVIDE GLAZING BEAD ON INTERIOR SIDE
  - REMOVE AND REINSTALL EXISTING INSECT SCREENS.

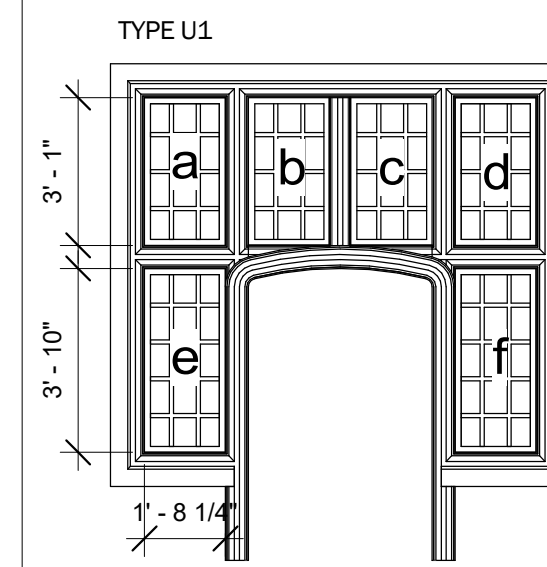
**LOUVER SCOPE**

- PROVIDE 4" DEEP HIGH PERFORMANCE DRAINABLE BLADE LOUVER AT LOCATIONS INDICATED IN THE LOUVER SCHEDULE.
- PROVIDE BIRD SCREEN AT FACADE AND AREAWAY LOCATIONS.
- PROVIDE INSECT AND BIRD SCREEN AT DORMER LOCATIONS.
- COORDINATE WITH MECHANICAL DRAWINGS FOR DAMPER LOCATIONS.

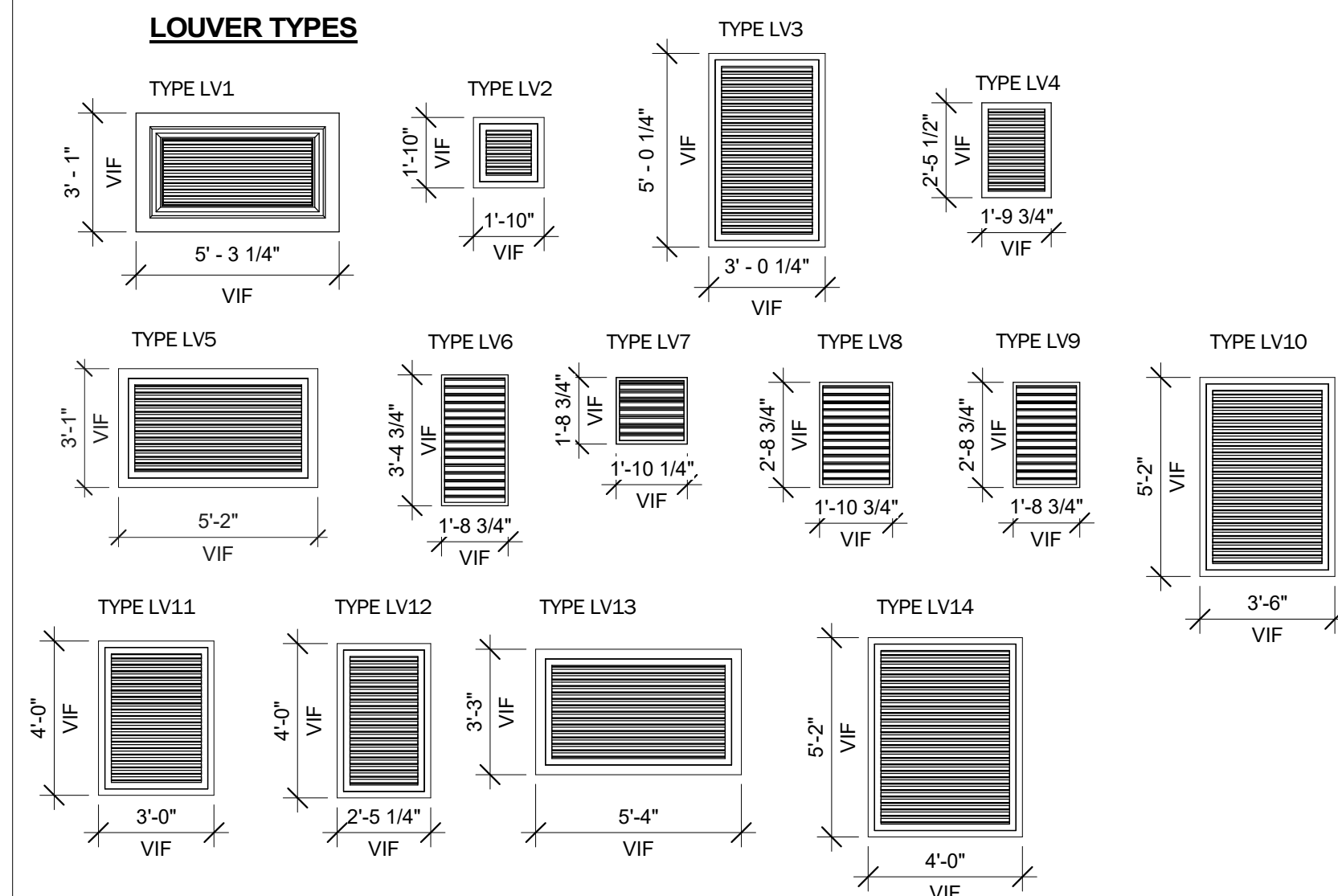
**HARDWARE TYPES**

- HW1. CASEMENT WINDOW HARDWARE**
- ROTO-OPERATOR OR EQUAL
  - CONCEALED HINGE
  - SASH LIMITER, 4" MAX OPENING

**WINDOW TYPE AT NORTH BALCH TERRACE**



**LOUVER TYPES**



**EXTERIOR GENERAL NOTES - WINDOWS**

- REFER TO THE SPECIFICATIONS FOR A DETAILED SCOPE OF WORK.
- EVERY EFFORT SHOULD BE MADE TO PROTECT THE EXISTING HISTORIC FEATURES SCHEDULED TO REMAIN. THE CONTRACTOR SHALL PROTECT THE EXISTING BUILDING, INCLUDING BUT NOT LIMITED TO, THE SURROUNDING ROOF SURFACES, DORMERS, AND CHIMNEYS, ADJACENT STONE FACADES, INTERIOR ARCHITECTURAL ELEMENTS, WINDOWS AND DOORS, STONE STAIRS, RETAINING WALLS, AND RAILINGS, AND THE LANDSCAPE SURROUNDING THE WORK AREA. THE CONTRACTOR IS RESPONSIBLE FOR REPAIR OR REPLACEMENT OF ANY DAMAGE TO EXISTING MATERIALS DURING DEMOLITION OR CONSTRUCTION TO MATCH ORIGINAL CONDITIONS AT NO ADDITIONAL COST TO THE OWNER.
- ALL WINDOWS ARE SHOWN AT APPROXIMATE SIZES. THE CONTRACTOR SHALL VERIFY ALL DIMENSIONS AND EXISTING CONDITIONS IN THE FIELD PRIOR TO THE COMMENCEMENT OF WORK. ACTUAL REQUIREMENTS MAY VARY AS EXISTING WINDOW ASSEMBLIES ARE DISMANTLED AND LATENT CONDITIONS ARE REVEALED.
- THE CONTRACTOR IS RESPONSIBLE FOR COMPLETING A THOROUGH SURVEY OF THE EXISTING CONDITIONS OF THE WINDOWS TO VERIFY AND CONFIRM THE SCOPE OF WORK PRIOR TO THE COMMENCEMENT OF THE RESTORATION WORK.
- PROTECTIVE PANELS ARE TO BE PLACED OVER ALL WINDOWS AT RISK FROM CONSTRUCTION. PROTECTION OF ALL ELEMENTS SHALL BE COORDINATED WITH THE ARCHITECT.
- REPLACE PERIMETER SEALANT (METAL TO STONE) 100%.
- REFER TO A2.10 SERIES FOR REPAIR SCOPE AT THE LIMESTONE SURROUNDS.
- THE CONTRACTOR SHALL ASSUME THAT ALL WINDOW SASH AND PAINTED SURFACES CONTAIN LEAD AND SHALL MEET ALL REQUIREMENTS FOR WORKER PROTECTION, SAFE OPERATIONS, AND PROPER DISPOSAL OF ALL MATERIALS.
- THE CONTRACTOR SHALL REFER TO HM DRAWINGS FOR EXTENT OF ASBESTOS CONTAINING MATERIALS AND SHALL MEET ALL REQUIREMENTS FOR WORKER PROTECTION, SAFE OPERATIONS, AND THE PROPER DISPOSAL OF ALL MATERIALS.
- REMOVE INTERIOR SECURITY BARS/GRILLES 100% AT EXISTING GROUND FLOOR WINDOWS.

**GLAZING TYPES**

- GL1. IGU/CLEAR (TYPICAL)**
- PROVIDE SIMULATED DIVIDED LITES TO MATCH EXISTING GRID PATTERN, COLOR, AND PROFILE; INSTALL ALUMINUM MUNTINS AT SURFACE 1 AND IN BETWEEN SURFACES 2 AND 3.
- GL2. IGU/FROSTED (BATHROOMS & AREAWAYS)**
- PROVIDE SIMULATED DIVIDED LITES TO MATCH EXISTING GRID PATTERN, COLOR, AND PROFILE; INSTALL ALUMINUM MUNTINS AT SURFACE 1 AND IN BETWEEN SURFACES 2 AND 3.
  - PROVIDE OBSCURED SURFACE ON SURFACE 3
- GL3. IGU/FROSTED (AREAWAYS)**
- NO DIVIDED LITES
  - PROVIDE OBSCURED SURFACE ON SURFACE 3
- GL4. IGU/CLEAR (DORMERS)**
- PROVIDE LEAD CAMING TAPE ON SURFACE 1 AND 2 TO MATCH EXISTING GRID PATTERN, COLOR, AND PROFILE
- GL5. IGU/FROSTED (DORMERS)**
- PROVIDE LEAD CAMING TAPE ON SURFACE 1 AND 2 TO MATCH EXISTING GRID PATTERN, COLOR, AND PROFILE
  - PROVIDE OBSCURE SURFACE ON SURFACE 3
- GL6. IGU/FIRE RATED**
- 45-MINUTE RATING
  - FIRE RATED GLASS SHALL BE ON INTERIOR SIDE
- GL7. IGU/SAFETY GLAZING**
- PROVIDE TEMPERED GLAZING
  - FOR WINDOWS, PROVIDE SIMULATED DIVIDED LITES TO MATCH EXISTING GRID PATTERN, COLOR, AND PROFILE; INSTALL ALUMINUM MUNTINS AT SURFACE 1 AND IN BETWEEN SURFACES 2 AND 3.
  - FOR DOORS, PROVIDE SIMULATED DIVIDED LITES TO MATCH EXISTING GRID PATTERN, COLOR, AND PROFILE; INSTALL ALUMINUM MUNTINS IN BETWEEN SURFACES 2 AND 3.
- GL8. IGU/CLEAR (SHAFTS)**
- PROVIDE SIMULATED DIVIDED LITES TO MATCH EXISTING GRID PATTERN, COLOR, AND PROFILE; INSTALL ALUMINUM MUNTINS AT SURFACE 1 AND IN BETWEEN SURFACES 2 AND 3.
  - NO LOW-E COATING



**BALCH HALL RENOVATION**

**Cornell University**

600 Thurston Avenue  
Ithaca, New York 14853

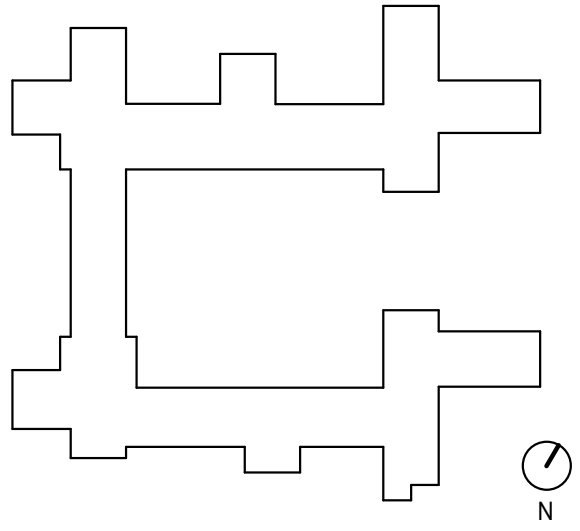
**GOODYCLANCY**  
ARCHITECTURE / PLANNING / PRESERVATION

420 Boylston Street Boston, Massachusetts 02116-3866  
p. 617.262.2760 f. 617.262.9512  
www.goodyclancy.com

CONSULTANT

STAMP

KEY PLAN



**Construction Documents**

ISSUED: 11/5/2021

REVISIONS

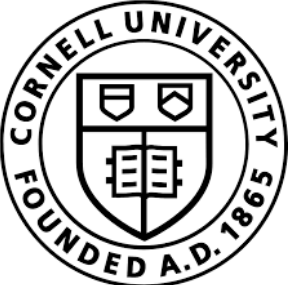
NO.	DATE	DESCRIPTION

**WINDOW AND LOUVER TYPES**

COPYRIGHT © 2021 GOODY CLANCY & ASSOCIATES  
GOODY CLANCY PROJECT NUMBER: 07400

DRAWN: MTB DATE: 11/5/2021  
CHECKED: JV SCALE: As indicated  
DRAWING NO.:

**A6.70**



BALCH HALL RENOVATION

Cornell University

600 Thurston Avenue  
Ithaca, New York 14853

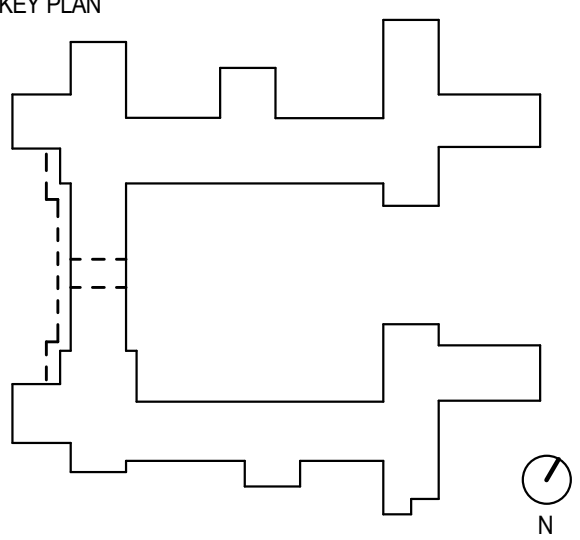
GOODYCLANCY

ARCHITECTURE / PLANNING / PRESERVATION  
420 Baylston Street Boston, Massachusetts 02116-3866  
p. 617.262.2760 f. 617.262.9512  
www.goodyclancy.com

CONSULTANT

STAMP

KEY PLAN



Construction Documents

ISSUED: 11/5/2021

REVISIONS

Table with 4 columns: Date, Description, Checked, and Number. Row 1: 9/26/2022, BULLETIN #8 WINDOWS, 8

WINDOW SCHEDULE - ARCH & MAIN FACADE, LOUVER SCHEDULE

COPYRIGHT © 2021 GOODY CLANCY & ASSOCIATES  
GOODY CLANCY PROJECT NUMBER: 07400

DRAWN: Author DATE: 11/5/2021  
CHECKED: Checker SCALE: 1/8" = 1'-0"  
DRAWING NO.:

A6.71

WINDOW SCHEDULE - ARCH & MAIN FACADE table with columns: Location, Elevation, Floor Number, Unit Number, Sash Number, Sash/Frame Window Type, Window Type, Operation, Window Repair Scope, Glazing Type, Insect Screen, Hardware Type, Detail Location (Head, Jamb, Sill), Existing Security Grille, and Remarks.

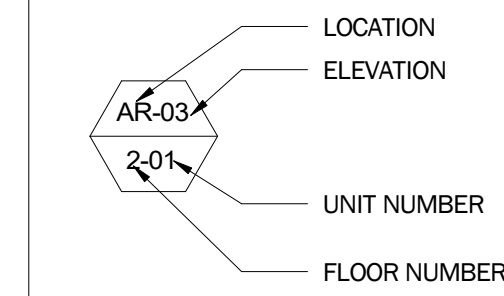
WINDOW SCHEDULE - ARCH & MAIN FACADE table (continued) with columns: Location, Elevation, Floor Number, Unit Number, Sash Number, Sash/Frame Window Type, Window Type, Operation, Window Repair Scope, Glazing Type, Insect Screen, Hardware Type, Detail Location (Head, Jamb, Sill), Existing Security Grille, and Remarks.

Grand total: 128

LOUVER SCHEDULE table with columns: Location, Elevation, Floor Number, Unit Number, Unique Number, Louver Type, Screen Type, Detail Location (Head, Jamb, Sill). Includes LOUVER NOTES: 1. REFER TO MECHANICAL DRAWINGS FOR DAMPER AND PLENUM INSTALLATION AT LOUVER.

WINDOW AND LOUVER SCHEDULE ABBREVIATION KEY:

- AR = ARCH WALKWAY
CT = COURTYARD
MF = MAIN FACADE
NB = NORTH BALCH
SB = SOUTH BALCH

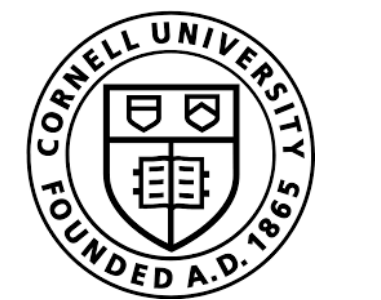


NOTE: REFER TO WINDOW TYPES ON SHEET A6.70 FOR SASH NUMBER

9/26/2022 12:32:45 PM C:\Users\olivia.huang\OneDrive - Goody, Clancy & Associates, Inc\Documents\00\_Revit-Local\ARCH\_07400-Cornell-Balch\_R21\_CENTRAL\_Olivia.huang@goodyclancy.com.rvt

WINDOW SCHEDULE - NORTH BALCH 2. Table with columns: Location, Elevation, Floor Number, Unit Number, Sash Number, Window Type, Sash/Frame Operation, Window Repair Scope, Glazing Type, Insect Screen, Hardware Type, Detail Location (Head, Jamb, Sill), Existing Security Grille, Remarks.

WINDOW SCHEDULE - NORTH BALCH 2. Table with columns: Location, Elevation, Floor Number, Unit Number, Sash Number, Window Type, Sash/Frame Operation, Window Repair Scope, Glazing Type, Insect Screen, Hardware Type, Detail Location (Head, Jamb, Sill), Existing Security Grille, Remarks.

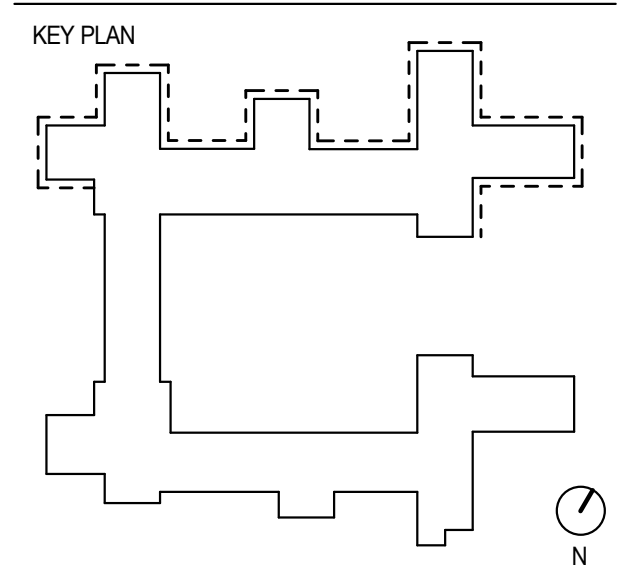


BALCH HALL RENOVATION Cornell University 600 Thurston Avenue Ithaca, New York 14853

GOODYCLANCY ARCHITECTURE / PLANNING / PRESERVATION 420 Baylston Street Boston, Massachusetts 02116-3866 p. 617.262.2760 f. 617.262.9512 www.goodyclancy.com

CONSULTANT

STAMP



Construction Documents

ISSUED: 11/5/2021

REVISIONS table with columns for revision number, date, and description.

WINDOW SCHEDULE - NORTH BALCH

COPYRIGHT © 2021 GOODY CLANCY & ASSOCIATES GOODY CLANCY PROJECT NUMBER: 07400

DRAWN: Author DATE: 11/5/2021 CHECKED: Checker SCALE: DRAWING NO.:

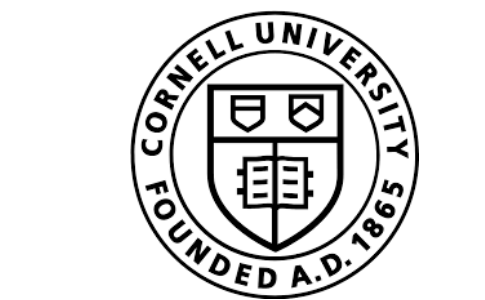
A6.73



9/26/2022 12:33:07 PM C:\Users\olivia.huang\OneDrive - Goody, Clancy & Associates, Inc\Documents\00\_Revit-Local\ARCH\_07400-Cornell-Balch\_R21\_CENTRAL\_Olivia.huang@goodyclancy.com.nyt

WINDOW SCHEDULE - NORTH BALCH 3. Table with columns: Location, Elevation, Floor Number, Unit Number, Sash Number, Window Type, Sash/Frame Operation, Window Repair Scope, Glazing Type, Insect Screen, Hardware Type, Head, Jamb, Sill, Existing Security Grille, Remarks. Rows include window details for locations NB 17 through NB 20.

WINDOW SCHEDULE - NORTH BALCH 3. Table with columns: Location, Elevation, Floor Number, Unit Number, Sash Number, Window Type, Sash/Frame Operation, Window Repair Scope, Glazing Type, Insect Screen, Hardware Type, Head, Jamb, Sill, Existing Security Grille, Remarks. Rows include window details for locations NB 20 through NB 23. Grand total: 211.



BALCH HALL RENOVATION

Cornell University

600 Thurston Avenue Ithaca, New York 14853

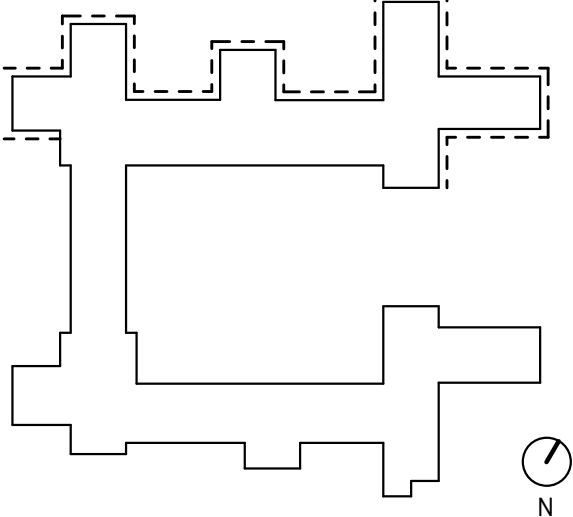
GOODYCLANCY ARCHITECTURE / PLANNING / PRESERVATION

420 Boylston Street Boston, Massachusetts 02116-3866 p. 617.262.2760 f. 617.262.9512 www.goodyclancy.com

CONSULTANT

STAMP

KEY PLAN



Construction Documents

ISSUED: 11/5/2021

REVISIONS

Table with columns for revision number, description, and date. Includes a revision entry for 9/26/2022 BULLETIN #8 WINDOWS.

WINDOW SCHEDULE - NORTH BALCH

COPYRIGHT © 2021 GOODY CLANCY & ASSOCIATES GOODY CLANCY PROJECT NUMBER: 07400

DRAWN: Author DATE: 11/5/2021

CHECKED: Checker SCALE:

DRAWING NO.:

A6.74





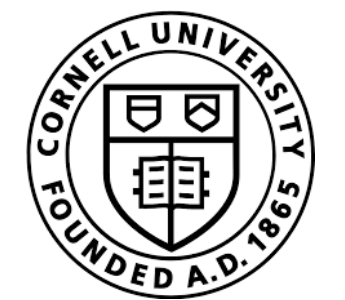


9/26/2022 12:34:40 PM C:\Users\olivia.huang\OneDrive - Goody, Clancy & Associates, Inc\Documents\00\_Revit-Local\ARCH\_07400-Cornell-Balch\_R21\_CENTRAL\_Olivia.huang@goodyclancy.com.rvt

WINDOW SCHEDULE - SOUTH BALCH 2. Table with columns: Window Number, Location, Elevation, Floor Number, Unit Number, Sash Number, Window Type, Sash/Frame Operation, Window Repair Scope, Glazing Type, Insect Screen, Hardware Type, Detail Location (Head, Jamb, Sill), Existing Security Grille, Remarks.

WINDOW SCHEDULE - SOUTH BALCH 2. Table with columns: Window Number, Location, Elevation, Floor Number, Unit Number, Sash Number, Window Type, Sash/Frame Operation, Window Repair Scope, Glazing Type, Insect Screen, Hardware Type, Detail Location (Head, Jamb, Sill), Existing Security Grille, Remarks.

Grand total: 137



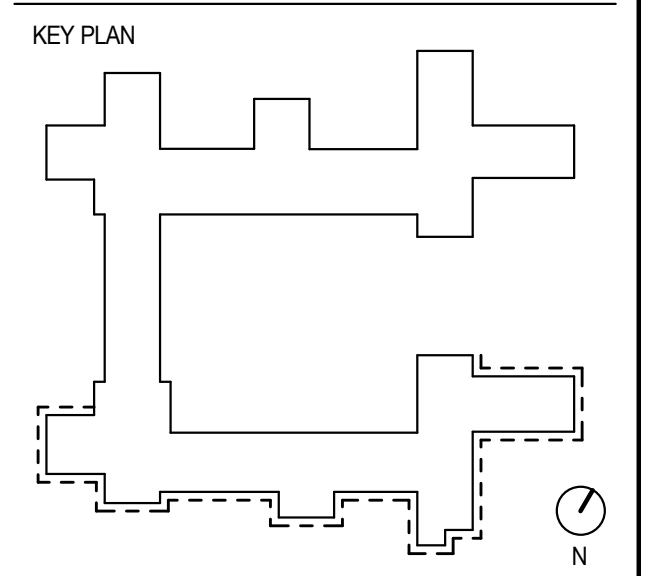
BALCH HALL RENOVATION Cornell University

600 Thurston Avenue Ithaca, New York 14853

GOODYCLANCY ARCHITECTURE / PLANNING / PRESERVATION 420 Baylston Street Boston, Massachusetts 02116-3866 p. 617.262.2760 f. 617.262.9512 www.goodyclancy.com

CONSULTANT

STAMP



Construction Documents

ISSUED: 11/5/2021

REVISIONS table with columns for revision number, description, and date.

WINDOW SCHEDULE - SOUTH BALCH

COPYRIGHT © 2021 GOODY CLANCY & ASSOCIATES GOODY CLANCY PROJECT NUMBER: 07400

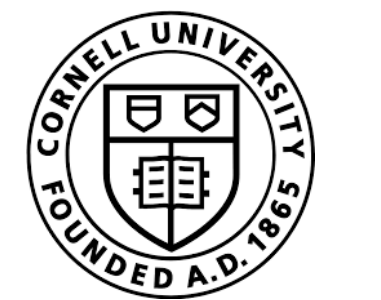
DRAWN: Author DATE: 11/5/2021 CHECKED: Checker SCALE: DRAWING NO.:

A6.79

9/26/2022 12:35:05 PM C:\Users\olivia.huang\OneDrive - Goody, Clancy & Associates, Inc\Documents\00\_Revit-Local\ARCH\_071400-Cornell-Balch\_R21\_CENTRAL\_Olivia.huang@goodyclancy.com.rvt

WINDOW SCHEDULE - SOUTH BALCH 3. Table with columns: Window Number, Location, Elevation, Floor Number, Unit Number, Sash Number, Window Type, Sash/Frame Operation, Window Repair Scope, Glazing Type, Insect Screen / Interior Storm, Hardware Type, Detail Location (Head, Jamb, Sill), Existing Security Grille, Remarks.

WINDOW SCHEDULE - SOUTH BALCH 3. Table with columns: Window Number, Location, Elevation, Floor Number, Unit Number, Sash Number, Window Type, Sash/Frame Operation, Window Repair Scope, Glazing Type, Insect Screen / Interior Storm, Hardware Type, Detail Location (Head, Jamb, Sill), Existing Security Grille, Remarks.



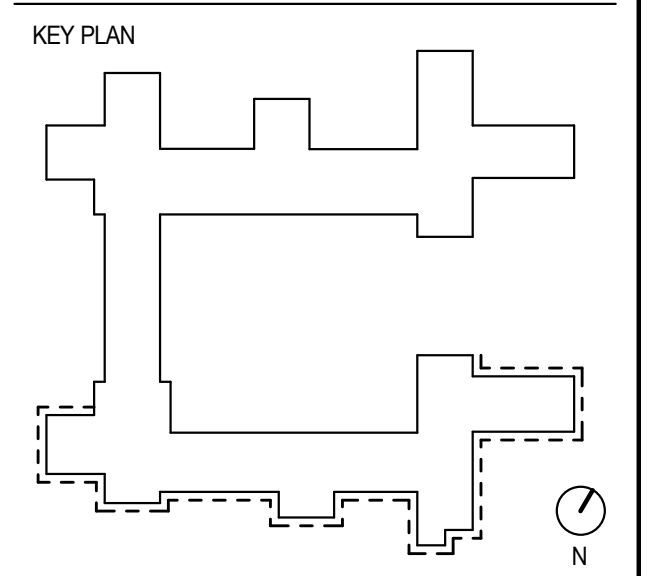
BALCH HALL RENOVATION Cornell University

600 Thurston Avenue Ithaca, New York 14853

GOODYCLANCY ARCHITECTURE / PLANNING / PRESERVATION 420 Boylston Street Boston, Massachusetts 02116-3866 p: 617.262.2760 f: 617.262.9512 www.goodyclancy.com

CONSULTANT

STAMP



Construction Documents

ISSUED: 11/5/2021

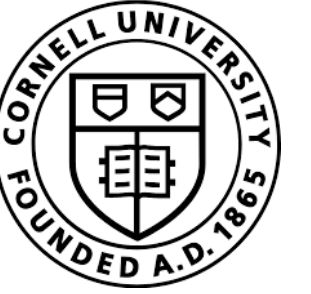
REVISIONS table with columns for revision number, date, and description.

WINDOW SCHEDULE - SOUTH BALCH

COPYRIGHT © 2021 GOODY CLANCY & ASSOCIATES GOODY CLANCY PROJECT NUMBER: 07400

DRAWN: Author DATE: 11/5/2021 CHECKED: Checker SCALE: DRAWING NO.:

A6.80



# BALCH HALL RENOVATION

Cornell University

600 Thurston Avenue  
Ithaca, New York 14853

## GOODYCLANCY

ARCHITECTURE / PLANNING / PRESERVATION  
420 Boylston Street Boston, Massachusetts 02116-3866  
p: 617.262.2760 f: 617.262.9512  
www.goodyclancy.com

CONSULTANT

STAMP

KEY PLAN

### Construction Documents

ISSUED: 11/5/2021

#### REVISIONS

NO.	DATE	DESCRIPTION

9/26/2022 BULLETIN #8 WINDOWS 8

### WINDOW DETAILS - FACADE

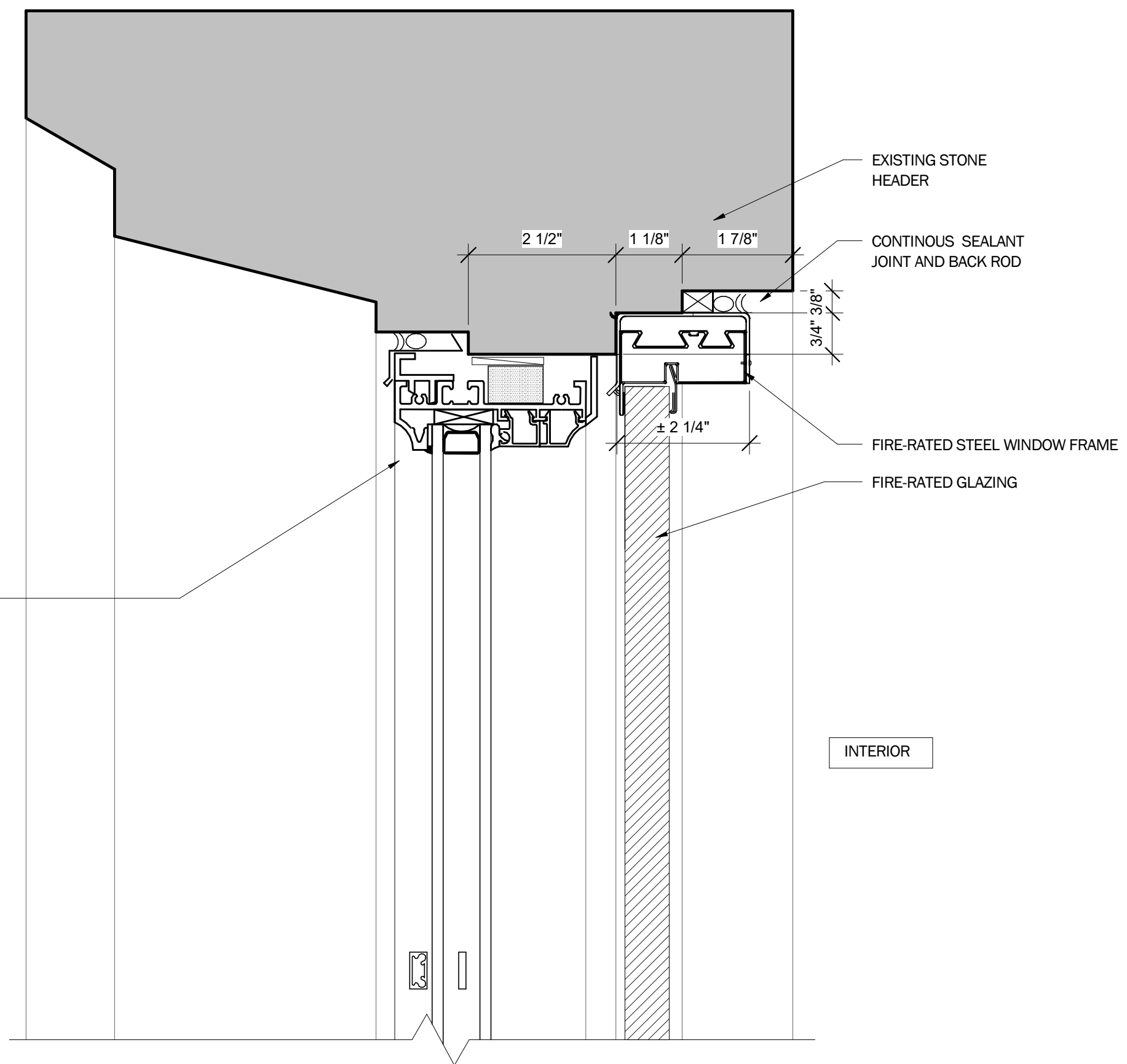
COPYRIGHT © 2021 GOODY CLANCY & ASSOCIATES  
GOODY CLANCY PROJECT NUMBER: 07400

DRAWN: OH DATE: 11/5/2021

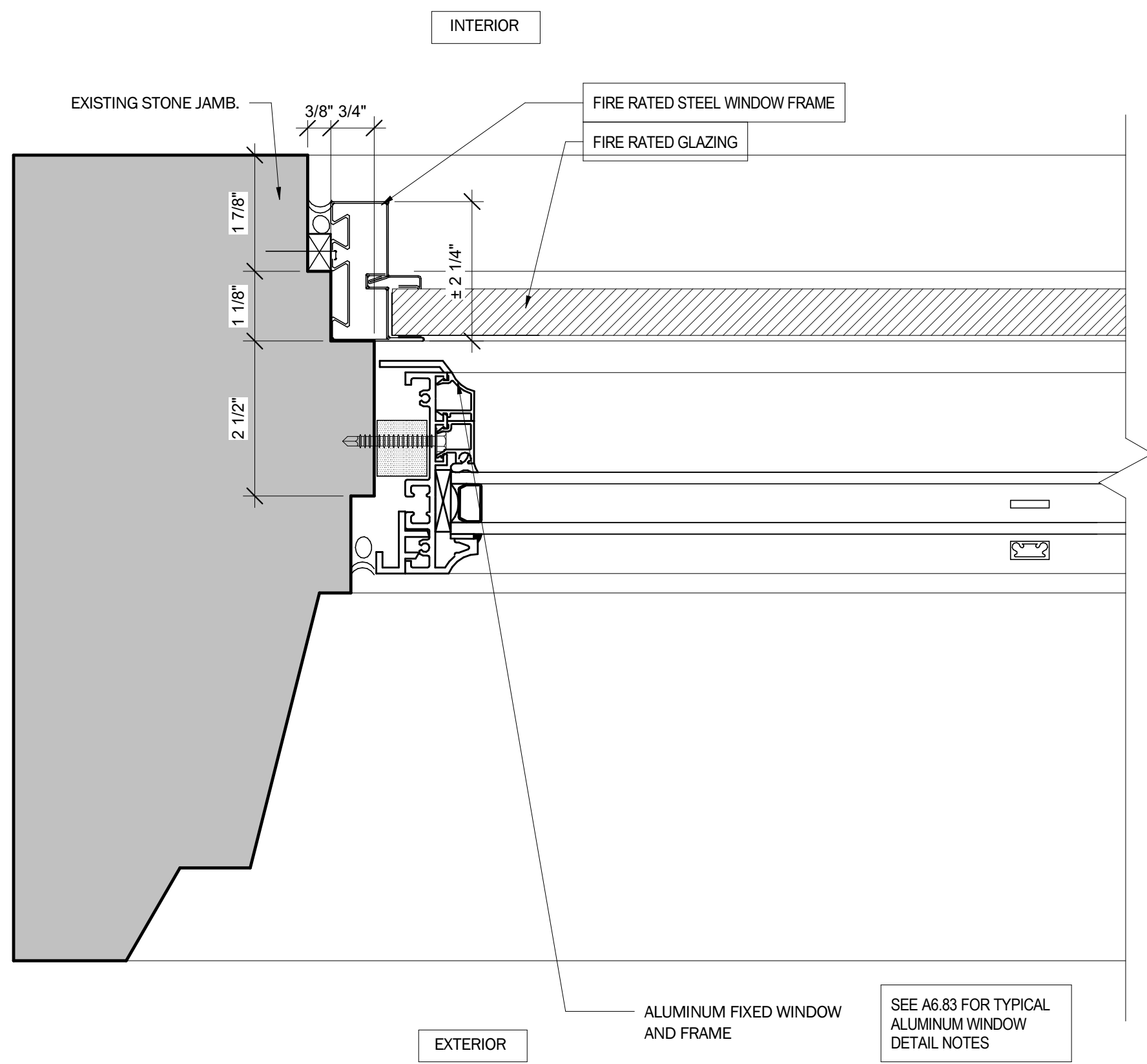
CHECKED: JS SCALE: 6" = 1'-0"

DRAWING NO.:

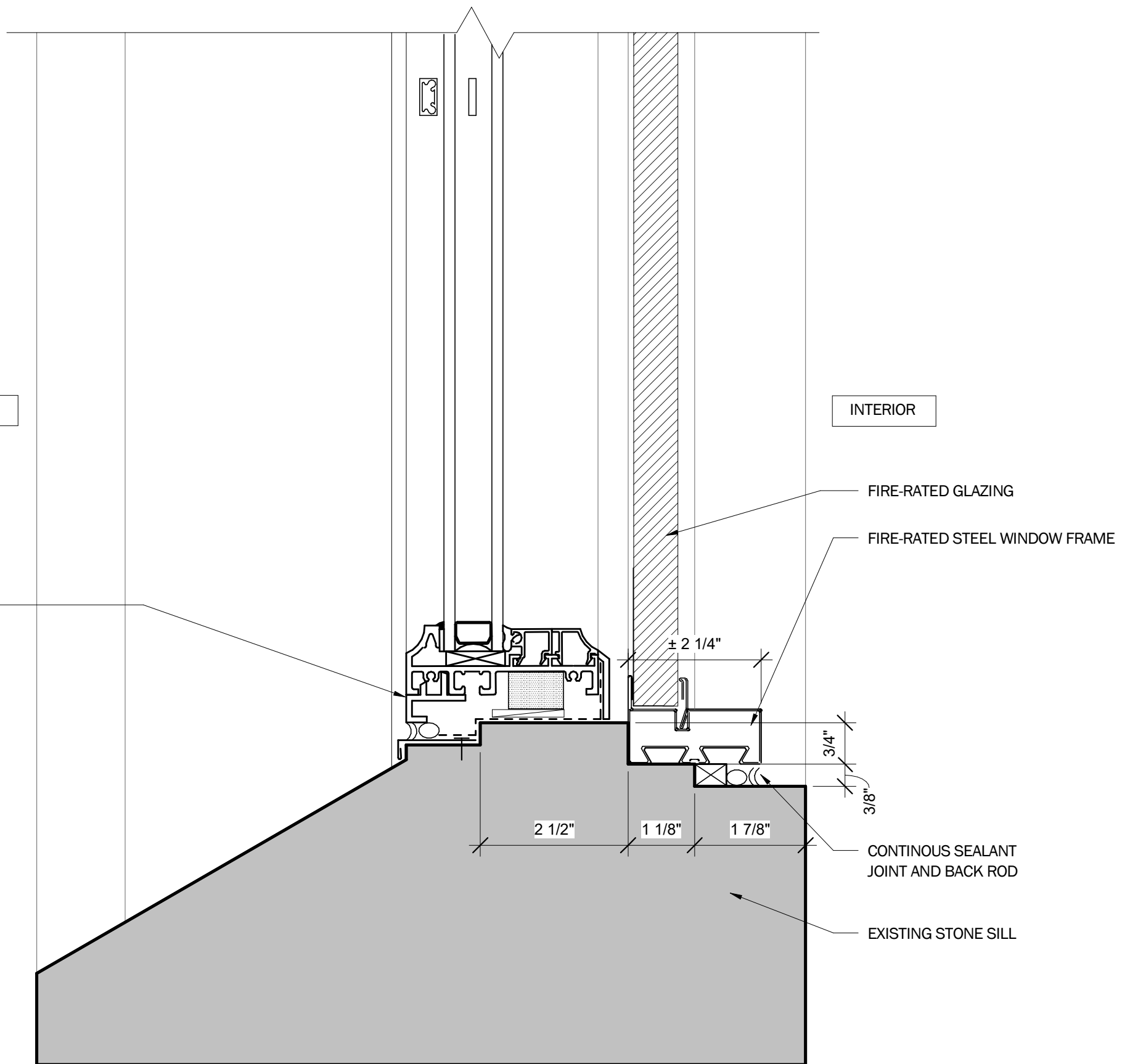
**A6.83A**



2 FIXED WINDOW WITH FIRE RATED UNIT - HEAD DETAIL Copy 1  
A6.83A Scale: 6" = 1'-0"



3 FIXED WINDOW WITH FIRE RATED UNIT - JAMB DETAIL  
A6.83A Scale: 6" = 1'-0"



1 FIXED WINDOW WITH FIRE RATED UNIT - SILL DETAIL  
A6.83A Scale: 6" = 1'-0"