

BID ADDENDUM NO. 3

July 8, 2026
Alfred Almond CSD
2025 Capital Project
2028-059

SED #02-01-01-04-0-001-037 – K-12 Main Campus Building

The following Addendum items shall be considered a part of the contract documents prepared by HUNT ENGINEERS, ARCHITECTS, LAND SURVEYORS & LANDSCAPE ARCHITECT, DPC. Bid Document date of April 7, 2026, issued for bid June 3, 2026.

Clarifications issued by this Addendum:

1. The bid opening date is changed via this addendum.

Project Manual Sections issued by this Addendum:

10 12 00 – Display Cases
10 28 19 – Tub and Shower Enclosures
12 36 00 – Countertops
26 05 33.16 - Boxes for Electrical Systems

Drawings issued by this Addendum:

AD3-S1 – FALL PROTECTION ANCHOR
AD3-S2 – PARTIAL HIGH ROOF FRAMING PLAN - AREA D
AD3-S3 – GLULAM BEARING CONNECTION AT BEAM
AD3-S4 – COLUMN SCHEDULE
AD3-P1 – LOCKER ROOM RISER DIAGRAM
AD3-P2 – REVISED POOL FILTER ROOM SANITARY PLAN
AD3-A1 – SOLID SURFACE SILL DETAILS
MC-A8.2 – FIRST FLOOR FINISH PLAN – AREA D
MC-A8.3 – FIRST FLOOR WALL FINISH PLAN – AREA D
MC-A9.1 – INTERIOR FINISH SCHEDULES

Revisions to Project Manual issued by this Addendum:

ITEM AD3-1 Refer to 00 01 12 – Table of Contents

ADD Specification Section 10 12 00 – Display Cases to the Table of Contents

ITEM AD3-2 Refer to 00 01 12 – Table of Contents

ADD Specification Section 10 28 19 – Tub and Shower Enclosures to the Table of Contents

ITEM AD3-3 00 11 13 – Advertisement for Bids

AMEND to read “Sealed bids will be received by the Owner until 2:00 PM local time on July 29, 2026...”

ITEM AD3-4 00 11 13 – Advertisement for Bids

AMEND to read “All questions prior to bid opening must be received by the close of business on July 21, 2026.”

ITEM AD3-5 Refer to Section 09 30 00 - Tiling

AMEND paragraph 2.8, A to read: “Specifically designed for bonding to cementitious substrate under thick mortar bed, under thin set tile, or on top of thick mortar bed; complying with ANSI A118.10.” .

ITEM AD3-6 Refer to Section 12 36 00 - Countertops

DELETE Specification Section 12 36 00 – Countertops in its entirety

ITEM AD3-7 Refer to Section 12 36 00 - Countertops

ADD Specification Section 12 36 00 – Countertops, as issued by this addendum.

ITEM AD3-8 Refer to Section 13 11 46 – Swimming Pool Equipment

ADD paragraph 2.3, O to read:

Swimsuit Dryer:

- 1) Electrically operated high speed spin dryer to remove water from swimsuits.
- 2) Type 304 stainless steel construction.
- 3) Manual start by hand pressure on the lid; cycle time approx. 8 seconds..
- 4) Power requirements: 120 VAC, UL certified.
- 5) Product: Extractor Corporation; Suitmate.
- 6) Quantity: (2) Total

ITEM AD3-9 Refer to Section 26 05 33.16 - Boxes for Electrical Systems

DELETE Specification Section 26 05 33.16 - Boxes for Electrical Systems in its entirety

ITEM AD3-10 Refer to Section 26 05 33.16 - Boxes for Electrical Systems

ADD Specification Section 26 05 33.16 - Boxes for Electrical Systems, as issued by this addendum.

Revisions to Drawings issued by this Addendum:

ITEM AD3-11 Refer to MC-S1.2 -FIRST FLOOR FRAMING PLANS - AREA D

AMEND Note 17 to read "S-1 = 10" CONCRETE SLAB, SEE 11/MC-S3.2 FOR REINFORCEMENT AND DEARING DETAIL. TOP OF SLAB IS TO BE 2" BELOW SLAB ON GRADE ELEVATION."

ITEM AD3-12 Refer to MC-S1.2 -FIRST FLOOR FRAMING PLANS - AREA D

AMEND S-1 slab callouts in plan to have a -0'-2" elevation adjustment.

ITEM AD3-13 Refer to MC-S1.3 - LOW AND HIGH ROOF FRAMING PLANS - AREA D

ADD Note 9 to plan 2 to read "PROVIDE AIR DAM IN THE ROOF DECK FLUTES AT ALL EXTERIOR WALLS."

ITEM AD3-14 Refer to MC-S1.3 - LOW AND HIGH ROOF FRAMING PLANS - AREA D

AMEND Plan 2 per AD3-S2 issued by this addendum.

ITEM AD3-15 Refer to MC-S1.4 - HIGH ROOF PLAN - AREA G

ADD Note 8 to plan 1 to read "PROVIDE FALL PROTECTION ANCHOR AT EACH OF THE MECHANICAL UNIT PER DETAIL 20/MC-S4.2."

ITEM AD3-16 Refer to MC-S2.1 - SCHEDULES

AMEND Column schedule per AD3-S4 issued by this addendum.

ITEM AD3-17 Refer to MC-S3.2 - FOUNDATION DETAILS

AMEND Elevated slab on detail 5,6,7,8,9,10,12 and 15 to eliminate the haunch at the bearing and lower the slab 0'-2". The slab thickness remains at 10".

ITEM AD3-18 Refer to MC-S3.2 - FOUNDATION DETAILS

AMEND Title on detail 13 to read "CONCRETE PLATFORM ON GEOFOAM SECTION."

ITEM AD3-19 Refer to MC-S4.2 - FRAMING DETAILS

ADD Note 1 to details 7 and 8 to read "PROVIDE AIR DAM IN ROOF DECK ABOVE BEAM AT EXTERIOR WALL."

ITEM AD3-20 Refer to MC-S4.2 - FRAMING DETAILS

ADD Detail 20 per drawing AD3-S1 issued by this addendum.

ADD Detail 21 per drawing AD3-S3 issued by this addendum.

ITEM AD3-21 Refer to MC-A1.1 Through MC-A1.8

AMEND Plan Drawing Note #6 to read: "Provide window film on interior of existing windows. Window film to be .05 mm thick sun control window film, ceramic architectural series 45 by 3M or equal. (Total Area: 736 SF)

ITEM AD3-22 Refer to MC-P3.1 – SCHEDULES & SCHEMATICS

AMEND WC-1 to read "WATER CLOSET, WALL MOUNT, ADA COMPLIANT, COLOR WHITE. MFG./MODEL AMERICAN STANDARD 2257.101, 1.28GPF, 1-1/2 INCH TOP SPUD, FLUSH VALVE MANUAL, SLOAN ROYAL 1Q11. 1.28 GPF, ELONGATED BOWL. PROVIDE ELONGATED SEAT SIMILAR TO BENEKE 527-SS, FLOOR MOUNTED CARRIER, SEE 'A' DRAWINGS FOR MOUNTING HEIGHT", as issued with this addendum.

ITEM AD3-23 Refer to MC-P2.2 – FIRST FLOOR DOMESTIC PLANS

ADD Detail 1 per drawing AD3-P1 issued by this addendum.

ITEM AD3-24 Refer to MC-P1.2 – FIRST FLOOR SANITARY PLAN – AREA D

AMEND Detail 3 per drawing AD3-P2, as issued with this addendum.

ITEM AD3-25 Refer to MC-A7.2 – PLAN DETAILS & SECTION DETAILS

AMEND Detail #28 as per Detail #1 on AD3-A1 as issued by this addendum.

ITEM AD3-26 Refer to MC-A7.2 – PLAN DETAILS & SECTION DETAILS

AMEND Detail #29 as per Detail #2 on AD3-A1 as issued by this addendum.

ITEM AD3-27 Refer to MC-A8.2 – FIRST FLOOR FINISH PLAN – AREA D

DELETE Sheet MC-A8.2 – FIRST FLOOR FINISH PLAN – AREA D in its entirety.

ITEM AD3-28 Refer to MC-A8.2 – FIRST FLOOR FINISH PLAN – AREA D

ADD Sheet MC-A8.2 – FIRST FLOOR FINISH PLAN – AREA D, as issued by this addendum.

ITEM AD3-29 Refer to MC-A8.3 – FIRST FLOOR WALL FINISH PLAN – AREA D

DELETE Sheet MC-A8.3 – FIRST FLOOR WALL FINISH PLAN – AREA D in its entirety.

ITEM AD3-30 Refer to MC-A8.3 – FIRST FLOOR WALL FINISH PLAN – AREA D

ADD Sheet MC-A8.3 – FIRST FLOOR WALL FINISH PLAN – AREA D, as issued by this addendum.

ITEM AD3-31 Refer to MC-A9.1 – INTERIOR FINISH SCHEDULES

DELETE Sheet MC-A9.1– INTERIOR FINISH SCHEDULES in its entirety.

ITEM AD3-32 Refer to MC-A9.1– INTERIOR FINISH SCHEDULES

ADD Sheet MC-A9.1 – INTERIOR FINISH SCHEDULES, as issued by this addendum.

ITEM AD3-33 Refer to MC-H0.3– FIRST FLOOR DEMOLITION PLAN – AREA G

DELETE Drawing annotation that reads “EXG. 2-1/2” LPS AND 1-1/2” CONDENSATE” in its entirety.

ITEM AD3-34 Refer to MC-H0.5 – SECOND FLOOR DEMOLITION PLAN – AREA B

ADD Demo note D7 to toilet room demolition work.

ITEM AD3-35 Refer to MC-H1.3 – FIRST FLOOR NEW WORK PLAN – AREA G

AMEND All D-1 diffuser tags (QTY 20) in room GYMNASIUM A-111 to now read as follows “D-3”

End of Addendum #3

SECTION 10 12 00
DISPLAY CASES

PART 1 GENERAL

1.1 SECTION INCLUDES

- A. Recessed display cases.

1.2 RELATED REQUIREMENTS

- A. Section 06 10 00 - Rough Carpentry: Blocking and supports.

1.3 REFERENCE STANDARDS

- A. AAMA 611 - Specification for Anodized Architectural Aluminum; 2024.
- B. ASTM B221 - Standard Specification for Aluminum and Aluminum-Alloy Extruded Bars, Rods, Wire, Profiles, and Tubes; 2021.
- C. ASTM B221M - Standard Specification for Aluminum and Aluminum-Alloy Extruded Bars, Rods, Wire, Profiles, and Tubes (Metric); 2021.
- D. ASTM C1048 - Standard Specification for Heat-Strengthened and Fully Tempered Flat Glass; 2025.
- E. ASTM E84 - Standard Test Method for Surface Burning Characteristics of Building Materials; 2024.

1.4 SUBMITTALS

- A. See Section 01 30 00 - Administrative Requirements, for submittal procedures.
- B. Product Data: Submit complete printed data and installation details indicating products to be provided as specified.
 - 1. Submit color charts for selection by the Architect.
- C. Shop Drawings: Submit complete installation details. Include dimensioned elevations.
- D. Samples: Submit samples of material and trim to illustrate finish, color, and texture.
- E. Specimen Warranty.

1.5 DELIVERY, STORAGE AND HANDLING

- A. Deliver display cases and materials to the Project site with manufacturer's protective crate covering and do not open until ready for use.
- B. Protect display cases before, during, and after installation. In case of damage, immediately provide necessary repairs and replacements.

1.6 FIELD CONDITIONS

- A. Field Measurements: Verify field measurements for recessed application for display cases before preparation of shop drawings and before fabrication to ensure proper installation.

1.7 WARRANTY

- A. See Section 01 78 00 - Closeout Submittals, for additional warranty requirements.

- B. Correct defective Work within a five year period after Date of Substantial Completion.
- C. Provide five year manufacturer warranty against defects and in materials, finish product and workmanship.

PART 2 PRODUCTS

2.1 DISPLAY CASES

- A. Manufacturers:
 - 1. Custom built to match existing.
 - 2. Substitutions: See Section 01 60 00 - Product Requirements.
- B. Recessed Display Case: Factory-fabricated wood-framed display case with adjustable glass shelves, finished interior, and aluminum trim on face to cover edge of recessed opening.
 - 1. Width: 10 feet.
 - 2. Height: 4 feet.
 - 3. Depth: 12 inches.
 - 4. Components:
 - a. Glazed Doors: Sliding.
 - 1) Number of Doors: 3 total doors to match existing.
 - b. Side Panels: Laminate-faced substrate.
 - c. Back Panel: Laminate-faced.
 - d. Top Panel: Provide light lens to match existing.
 - e. Bottom Panel: Laminate-faced substrate.
 - f. Lighting: LED.

2.2 COMPONENTS

- A. Wood Case Construction: 3/4 inch 7-ply maple veneer plywood.
- B. Glazed Sliding Doors:
 - 1. 3/16 inch clear tempered glass with plastic finger pulls.
 - 2. Door track: Extruded aluminum glass shoe with bottom rollers and top plastic guide.
 - 3. Lock: Glass door cylinder lock, keyed alike for all cases.
- C. Glass Shelves:
 - 1. 1/4 inch clear tempered glass with flat-polished edges.
 - 2. Shelf Depth: 10 inches.
 - 3. Shelves per Unit: Two.
- D. Shelf Standards and Brackets: Single-slotted channel standards for brackets adjustable in 1 inch increments along entire length of standard, drilled and countersunk for screws.
 - 1. Standards Mounting: Surface-mounted on back panel.
 - 2. Face Width: 5/8 inch.
 - 3. Finish: bronze to match existing.
- E. Lighting: Manufacturer's standard LED light fixture housed at top of case with louvered aluminum access door with keyed lock.
 - 1. Recessed: Fixture with translucent diffuser to match existing.
 - 2. Controls: On/Off using dedicated wall switch within display case.

2.3 MATERIALS

- A. Aluminum Extrusions: ASTM B221 (ASTM B221M), 6063 alloy, T5 temper.
 - 1. Finish: Factory anodized; AAMA 611: bronze anodized.
- B. Heat-Strengthened and Fully Tempered Glass: ASTM C1048, Kind FT.

PART 3 EXECUTION

3.1 INSTALLATION

- A. Install in accordance with manufacturer's instructions.
- B. Provide factory trained installers.
- C. Locate fastening devices to secure cases securely to back and sides of rough opening.
- D. Refer to drawings for display case mounting heights.
- E. Clean case and glass using manufacturers recommended procedures.
- F. Provide mitered and wrapped hairline joints for all trims.

3.2 ADJUSTING AND CLEANING

- A. Verify that all accessories are installed as detailed for each unit.
- B. At completion of work, clean glass surfaces, back panels and trim in accordance with manufacturer's recommendations leaving units ready for use.

END OF SECTION

SECTION 10 28 19
TUB AND SHOWER ENCLOSURES

PART 1 GENERAL

1.1 SECTION INCLUDES

- A. Tub and shower surrounds.

1.2 RELATED REQUIREMENTS

- A. Section 22 40 17 - Bathtubs and Showers.

1.3 REFERENCE STANDARDS

- A. ASTM C920 - Standard Specification for Elastomeric Joint Sealants; 2018 (Reapproved 2024).
- B. ASTM E84 - Standard Test Method for Surface Burning Characteristics of Building Materials; 2024.
- C. ISFA 2-01 - Classification and Standards for Solid Surfacing Material; 2013.
- D. NEMA LD 3 - High-Pressure Decorative Laminates; 2005.

1.4 SUBMITTALS

- A. See Section 01 30 00 - Administrative Requirements, for submittal procedures.
- B. Product Data: Provide manufacturer's literature for enclosure.
- C. Shop Drawings: Indicate layout, dimensions, identification of components, and interface with adjacent construction.
- D. Selection Samples: Two sets, representing manufacturer's full range of available cast polymer materials and finishes.
- E. Verification Samples: Two samples, minimum size of 2 by 3 inches, representing actual material and finish of exposed cast polymer.
- F. Manufacturer's Installation Instructions: Indicate complete preparation, installation, and cleaning requirements.
- G. Manufacturer's qualification statement.
- H. Installer's qualification statement.
- I. Specimen warranty.
- J. Executed warranty.

1.5 QUALITY ASSURANCE

- A. Manufacturer Qualifications: Company specializing in manufacturing products specified in this section, with at least three years of documented experience.
- B. Installer Qualifications: Company specializing in performing work of type specified and with at least three years of documented experience.

1.6 DELIVERY, STORAGE, AND HANDLING

- A. Store products under cover and elevated above grade in manufacturer's unopened packaging until installation.

1.7 WARRANTY

- A. See Section 01 78 00 - Closeout Submittals for additional warranty requirements.
- B. Manufacturer's standard Warranty of 10 years on Solid Surface Material.

PART 2 PRODUCTS

2.1 MANUFACTURERS

- A. Cast Polymer Tub and Shower Surrounds:
 - 1. Inpro; Prism Solid Surface Shower Walls: www.inprocorp.com/#sle.
 - 2. International Marble Industries: www.imitoday.com/#sle.
 - 3. Kohler Company: www.kohler.com/#sle.
 - 4. Swan Surfaces: www.swanstone.com/#sle.
 - 5. Substitutions: See Section 01 60 00 - Product Requirements.

2.2 TUB AND SHOWER SURROUNDS

- A. Description: Cast polymer panels over continuous substrate; installed in alcove above shower receptor or tub; available as individual panels or as kits.
- B. Panel Thickness: Thickness varies; 0.225 inch thick, minimum.

2.3 MATERIALS

- A. Cast Polymer Surround Material: Complying with ISFA 2-01 and NEMA LD 3; acrylic or polyester resin, renewable material filler, and pigments; homogenous, nonporous and capable of being worked and repaired using standard woodworking tools; no surface coating; color and pattern consistent throughout thickness.
 - 1. Resin: Polyester; integrally-colored, stain-resistant and resistant to domestic chemicals and cleaners.
 - 2. Surface Burning Characteristics: Flame spread index of 25 or less, and smoke developed index of 450 or less, Class A, when tested in accordance with ASTM E84.
 - 3. Color and Pattern: As selected by Architect from manufacturer's standard line.
- B. Sealant: One-part mildew-resistant silicone sealant, complying with ASTM C920, Color selected by Architect..

PART 3 EXECUTION

3.1 EXAMINATION

- A. Do not begin installation until supports and adjacent substrates are complete.
- B. If substrate preparation is the responsibility of another installer, notify Architect of unsatisfactory preparation before proceeding.

3.2 PREPARATION

- A. Clean substrates thoroughly prior to installation.

- B. Prepare substrates as recommended by the manufacturer.

3.3 INSTALLATION

- A. Install in accordance with manufacturer's instructions and approved shop drawings.
- B. Fit and align tub and shower enclosure level and plumb.

3.4 FIELD QUALITY CONTROL

- A. See Section 01 40 00 - Quality Requirements for additional requirements.

3.5 CLEANING

- A. See Section 01 70 00 - Execution and Closeout Requirements for additional requirements.

3.6 CLOSEOUT ACTIVITIES

- A. See Section 01 78 00 - Closeout Submittals, for closeout submittals.

3.7 PROTECTION

- A. Protect installed products until Date of Substantial Completion.
- B. Touch-up, repair or replace damaged products before Date of Substantial Completion.

END OF SECTION

SECTION 12 36 00
COUNTERTOPS

PART 1 GENERAL

1.1 SECTION INCLUDES

- A. Wall-hung counters.
- B. Solid Surface wall caps.
- C. Solid surface window sills.

1.2 RELATED REQUIREMENTS

- A. Section 08 51 13 - Aluminum Windows: Solid surface sills.
- B. Section 09 30 00 - Tiling: Tile for commenting platform.
- C. Section 22 40 00 - Plumbing Fixtures: Sinks for solid surface lavatories with integral sinks fabricated from same material.

1.3 PRICE AND PAYMENT PROCEDURES

- A. See Section 01 21 00 - Allowances.

1.4 REFERENCE STANDARDS

- A. AWI/AWMAC/WI (AWS) - Architectural Woodwork Standards, 2nd Edition; 2014, with Errata (2016).
- B. AWMAC/WI (NAAWS) - North American Architectural Woodwork Standards; 2021, with Errata.
- C. ISFA 2-01 - Classification and Standards for Solid Surfacing Material; 2013.
- D. NEMA LD 3 - High-Pressure Decorative Laminates; 2005.

1.5 ADMINISTRATIVE REQUIREMENTS

- A. See Section 01 30 00 - Administrative Requirements: Pre-installation meeting.
- B. Pre-installation Meeting: Convene a pre-installation meeting one week before starting work of this section; require attendance by all affected installers.

1.6 SUBMITTALS

- A. See Section 01 30 00 - Administrative Requirements for submittal procedures.
- B. Product Data: Manufacturer's data sheets on each product to be used, including:
 - 1. Preparation instructions and recommendations.
 - 2. Storage and handling requirements and recommendations.
 - 3. Specimen warranty.
- C. Shop Drawings: Complete details of materials and installation . combined with shop drawings of solid surface material and cutting/sealing details.
 - 1. Indicate dimensions, edge profiles, and cut outs as needed.
- D. Verification Samples: For each finish product specified, minimum size 4 inches square, representing actual product, color, and patterns.

- E. Test Reports: Chemical resistance testing, showing compliance with specified requirements.
- F. Installer's qualification statement.
- G. Installation Instructions: Manufacturer's installation instructions and recommendations.
- H. Maintenance Data: Manufacturer's instructions and recommendations for maintenance and repair of countertop surfaces.

1.7 QUALITY ASSURANCE

- A. Fabricator Qualifications: Natural Stone Institute (NSI) Accredited Natural Stone Fabricator; www.naturalstoneinstitute.org/#sle.
- B. Installer Qualifications: Company specializing in performing work of the type specified in this section, with not less than three years of documented experience.

1.8 DELIVERY, STORAGE, AND HANDLING

- A. Store products in manufacturer's unopened packaging until ready for installation.
- B. Store and dispose of solvent-based materials, and materials used with solvent-based materials, in accordance with requirements of local authorities having jurisdiction.

1.9 FIELD CONDITIONS

- A. Maintain environmental conditions (temperature, humidity, and ventilation) within limits recommended by manufacturer for optimum results. Do not install products under environmental conditions outside manufacturer's absolute limits.

PART 2 PRODUCTS

2.1 COUNTERTOPS

- A. Quality Standard: Custom Grade, in accordance with AWI/AWMA/WI (AWS) or AWMA/WI (NAAWS), unless noted otherwise.
- B. Solid Surfacing Countertops: Solid surfacing sheet or plastic resin casting self-supporting over structural members.
 - 1. Flat Sheet Thickness (countertop @ Score Booth): 1-1/2 inch, minimum, (half wall cap and column wrap cap): 1 inch minimum.
 - 2. Solid Surfacing Sheet and Plastic Resin Castings: Complying with ISFA 2-01 and NEMA LD 3; acrylic or polyester resin, mineral filler, and pigments; homogenous, non-porous and capable of being worked and repaired using standard woodworking tools; no surface coating; color and pattern consistent throughout thickness.
 - a. Manufacturers:
 - 1) Acorn Engineering; Neo-Metro: www.neo-metro.com.
 - 2) Substitutions: See Section 01 60 00 - Product Requirements. Product selected as substitute must also be able to match solid surface sinks specified in Section 22 40 00.
 - b. Finish on Exposed Surfaces: Matte, gloss rating of 5 to 20.
 - c. Solid Surface Product (SSM-1): Polymer Resin.
 - 1) Color: Cotton Tail
 - 2) Application(s): Column caps, wall caps at commenting platform, commenting platform countertop, natatorium window sills.
 - 3) Surface Finish: Matte
 - 4) Product is cut and seamed in field.
 - 5) Product Code: NEO-A036.

- 6) Sheet Size: 4' x 8' x 1-1/2" thickness.
- 7) Manufacturer:
 - (a) Morris Group International; Corterra Solid Surface (Neo-Metro by Acorn):
www.morrisgroupint.com, www.neo-metro.com.
3. Sills shall be solid 1-1/2 inch solid surface material and fabricated as scheduled in drawings.
4. Other Components Thickness: 1-1/2 inch, minimum.
5. Back and End Splashes: Same sheet material, square top; minimum 4 inches high.
6. Fabricate in accordance with manufacturer's standard requirements.

2.2 MATERIALS

- A. Adhesives: Chemical resistant waterproof adhesive as recommended by manufacturer of materials being joined.
- B. Joint Sealant: Mildew-resistant silicone sealant, clear.

2.3 ACCESSORIES

- A. Powder Coated Steel Fixed Countertop Support Brackets:
 1. Finish: Manufacturer's standard, factory-applied, textured powder coat.
 2. Color: As selected by Architect.
 3. Manufacturer:
 - a. Centerline Brackets: www.countertopbracket.com/#sl.
 - b. Substitutions: See Section 01 60 00 - Product Requirements. Steel brackets must have capabilities to be powder coated as used in a natatorium setting.

2.4 FABRICATION

- A. Fabricate tops and splashes in the largest sections practicable, with top surface of joints flush.
 1. Join lengths of tops using best method recommended by manufacturer.
 2. Fabricate to overhang fronts and ends of cabinets 1 inch except where top butts against cabinet or wall.
 3. Prepare all cutouts accurately to size; replace tops having improperly dimensioned or unnecessary cutouts or fixture holes.
- B. Provide back/end splash wherever counter edge abuts vertical surface unless otherwise indicated.
 1. Secure to countertop with concealed fasteners and with contact surfaces set in waterproof glue.
 2. Height: 4 inches, unless otherwise indicated.

PART 3 EXECUTION

3.1 EXAMINATION

- A. Do not begin installation until substrates have been properly prepared.
- B. If substrate preparation is the responsibility of another installer, notify Architect of unsatisfactory preparation before proceeding.
- C. Verify that wall surfaces have been finished and mechanical and electrical services and outlets are installed in proper locations.

3.2 PREPARATION

- A. Clean surfaces thoroughly prior to installation.
- B. Prepare surfaces using the methods recommended by the manufacturer for achieving the best result for the substrate under the project conditions.

- C. Provide solid wood blocking at all walls and countertops connected to brackets.

3.3 INSTALLATION

- A. Securely attach countertops to wall face and half-wall tops using concealed fasteners. Make flat surfaces level; shim where required.
- B. Seal joint between back/end splashes and vertical surfaces.

3.4 TOLERANCES

- A. Variation From Horizontal: 1/8 inch in 10 feet, maximum.
- B. Offset From Wall, Countertops: 1/8 inch maximum; 1/16 inch minimum.
- C. Field Joints: 1/8 inch wide, maximum.

3.5 CLEANING

- A. Clean countertops surfaces thoroughly.

3.6 PROTECTION

- A. Protect installed products until completion of project.
- B. Touch-up, repair or replace damaged products before Date of Substantial Completion.

END OF SECTION

SECTION 26 05 33.16
BOXES FOR ELECTRICAL SYSTEMS

PART 1 GENERAL

1.1 SECTION INCLUDES

- A. Outlet and device boxes up to 100 cubic inches, including those used as junction and pull boxes.
- B. Cabinets and enclosures, including junction and pull boxes larger than 100 cubic inches.
- C. Boxes and enclosures for integrated power, data, and audio/video.
- D. Floor boxes.
- E. Underground boxes/enclosures.
- F. Accessories.

1.2 RELATED REQUIREMENTS

- A. Section 07 84 00 - Firestopping.
- B. Section 26 05 26 - Grounding and Bonding for Electrical Systems.
- C. Section 26 05 29 - Hangers and Supports for Electrical Systems.
- D. Section 26 05 33.13 - Conduit for Electrical Systems:
 - 1. Conduit bodies and other fittings.
 - 2. Additional requirements for locating boxes to limit conduit length and/or number of bends between pulling points.
- E. Section 26 05 53 - Identification for Electrical Systems: Identification products and requirements.
- F. Section 26 27 26 - Wiring Devices:
 - 1. Wall plates.
 - 2. Floor box service fittings.
 - 3. Additional requirements for locating boxes for wiring devices.

1.3 REFERENCE STANDARDS

- A. NECA 1 - Standard for Good Workmanship in Electrical Construction; 2023.
- B. NECA 130 - Standard for Installing and Maintaining Wiring Devices; 2016.
- C. NEMA EN 10250 - Enclosures for Electrical Equipment (1000 Volts Maximum); 2024.
- D. NEMA FB 1 - Fittings, Cast Metal Boxes, and Conduit Bodies for Conduit, Electrical Metallic Tubing, and Cable; 2014.
- E. NEMA OS 1 - Sheet-Steel Outlet Boxes, Device Boxes, Covers, and Box Supports; 2013 (Reaffirmed 2020).
- F. NFPA 70 - National Electrical Code; Most Recent Edition Adopted by Authority Having Jurisdiction, Including All Applicable Amendments and Supplements.
- G. UL 50 - Enclosures for Electrical Equipment, Non-Environmental Considerations; Current Edition, Including All Revisions.

- H. UL 508A - Industrial Control Panels; Current Edition, Including All Revisions.
- I. UL 50E - Enclosures for Electrical Equipment, Environmental Considerations; Current Edition, Including All Revisions.
- J. UL 514A - Metallic Outlet Boxes; Current Edition, Including All Revisions.

1.4 ADMINISTRATIVE REQUIREMENTS

- A. Coordination:
 - 1. Coordinate the work with other trades to avoid placement of ductwork, piping, equipment, or other potential obstructions within the dedicated equipment spaces and working clearances for electrical equipment required by NFPA 70.
 - 2. Coordinate arrangement of electrical equipment with the dimensions and clearance requirements of the actual equipment to be installed.
 - 3. Coordinate minimum sizes of boxes with the actual installed arrangement of conductors, clamps, support fittings, and devices, calculated according to NFPA 70.
 - 4. Coordinate minimum sizes of pull boxes with the actual installed arrangement of connected conduits, calculated according to NFPA 70.
 - 5. Coordinate the placement of boxes with millwork, furniture, devices, equipment, etc. installed under other sections or by others.
 - 6. Coordinate the work with other trades to preserve insulation integrity.
 - 7. Coordinate the work with other trades to provide walls suitable for installation of flush-mounted boxes where indicated.
 - 8. Notify Architect of any conflicts with or deviations from Contract Documents. Obtain direction before proceeding with work.

1.5 SUBMITTALS

- A. See Section 01 30 00 - Administrative Requirements, for submittal procedures.
- B. Product Data: Provide manufacturer's standard catalog pages and data sheets for cabinets and enclosures, boxes for hazardous (classified) locations, floor boxes, and underground boxes/enclosures.
- C. Project Record Documents: Record actual locations for outlet and device boxes, pull boxes, cabinets and enclosures, floor boxes, and underground boxes/enclosures.
- D. Maintenance Materials: Furnish the following for Owner's use in maintenance of project.
 - 1. Keys for Lockable Enclosures: Two of each different key.

1.6 QUALITY ASSURANCE

- A. Comply with requirements of NFPA 70.
- B. Product Listing Organization Qualifications: An organization recognized by OSHA as a Nationally Recognized Testing Laboratory (NRTL) and acceptable to authorities having jurisdiction.

1.7 DELIVERY, STORAGE, AND HANDLING

- A. Receive, inspect, handle, and store products in accordance with manufacturer's instructions.

PART 2 PRODUCTS

2.1 BOXES

- A. General Requirements:

1. Do not use boxes and associated accessories for applications other than as permitted by NFPA 70 and product listing.
 2. Provide all boxes, fittings, supports, and accessories required for a complete raceway system and to accommodate devices and equipment to be installed.
 3. Provide products listed, classified, and labeled as suitable for the purpose intended.
 4. Where box size is not indicated, size to comply with NFPA 70 but not less than applicable minimum size requirements specified.
 5. Provide grounding terminals within boxes where equipment grounding conductors terminate.
- B. Outlet and Device Boxes Up to 100 cubic inches, Including Those Used as Junction and Pull Boxes:
1. Use sheet-steel boxes for dry locations unless otherwise indicated or required.
 2. Use cast aluminum boxes for damp or wet locations unless otherwise indicated or required; furnish with compatible weatherproof gasketed covers.
 3. Use cast aluminum boxes where exposed galvanized steel rigid metal conduit is used.
 4. Use suitable concrete type boxes where flush-mounted in concrete.
 5. Use suitable masonry type boxes where flush-mounted in masonry walls.
 6. Use raised covers suitable for the type of wall construction and device configuration where required.
 7. Use shallow boxes where required by the type of wall construction.
 8. Do not use "through-wall" boxes designed for access from both sides of wall.
 9. Sheet-Steel Boxes: Comply with NEMA OS 1, and list and label as complying with UL 514A.
 10. Cast Metal Boxes: Comply with NEMA FB 1, and list and label as complying with UL 514A; furnish with threaded hubs.
 11. Boxes for Supporting Luminaires and Ceiling Fans: Listed as suitable for the type and weight of load to be supported; furnished with fixture stud to accommodate mounting of luminaire where required.
 12. Boxes for Ganged Devices: Use multigang boxes of single-piece construction. Do not use field-connected gangable boxes unless specifically indicated or permitted.
 13. Wall Plates: Comply with Section 26 27 26.
 14. Manufacturers:
 - a. Cooper Crouse-Hinds, a division of Eaton Corporation: www.cooperindustries.com/#sle.
 - b. Hubbell Incorporated; Bell Products: www.hubbell-rtb.com/#sle.
 - c. Hubbell Incorporated; RACO Products: www.hubbell-rtb.com/#sle.
 - d. Thomas & Betts Corporation: www.tnb.com/#sle.
 - e. Substitutions: See Section 01 60 00 - Product Requirements.
- C. Cabinets and Enclosures, Including Junction and Pull Boxes Larger Than 100 cubic inches:
1. Comply with NEMA EN 10250, and list and label as complying with UL 50 and UL 50E, or UL 508A.
 2. NEMA EN 10250 Environment Type, Unless Otherwise Indicated:
 - a. Indoor Clean, Dry Locations: Type 1, painted steel.
 - b. Outdoor Locations: Type 4, painted steel.
 3. Junction and Pull Boxes Larger Than 100 cubic inches:
 - a. Provide screw-cover or hinged-cover enclosures unless otherwise indicated.
 - b. Boxes 6 square feet and Larger: Provide sectionalized screw-cover or hinged-cover enclosures.
 4. Finish for Painted Steel Enclosures: Manufacturer's standard grey unless otherwise indicated.
 5. Manufacturers:
 - a. Cooper B-Line, a division of Eaton Corporation: www.cooperindustries.com/#sle.
 - b. Hoffman, a brand of Pentair Technical Products: www.hoffmanonline.com/#sle.
 - c. Hubbell Incorporated; Wiegmann Products: www.hubbell-wiegmann.com/#sle.
 - d. Substitutions: See Section 01 60 00 - Product Requirements.
- D. Floor Boxes:
1. Description: Floor boxes compatible with floor box service fittings provided in accordance with Section 26 27 26; with partitions to separate multiple services; furnished with all components, adapters, and trims required for complete installation.

2. Metallic Floor Boxes: Fully adjustable (with integral means for leveling adjustment prior to and after concrete pour).
 3. Manufacturer: Refer to floor box schedule on drawings for additional information.
- E. Pool Deck Boxes/Enclosures:
1. Description: In-deck NEMA 4X, solid bottom boxes. furnished with flush, non-skid covers with legend indicating type of service and stainless steel tamper resistant cover bolts.
 2. Size: 16" by 13" unless otherwise indicated.
 3. Depth: As required to extend below frost line to prevent frost upheaval, but not less than 5".
 4. Boxes and conduits into deck box to have drainage to pool room mechanical or pool. All installations to meet grounding requirements.
 5. Manufacturers:
 - a. Bud Industries NBF <https://www.budind.com>
 - b. Substitutions: See Section 01 60 00-Product Requirements#

PART 3 EXECUTION

3.1 EXAMINATION

- A. Verify that field measurements are as indicated.
- B. Verify that mounting surfaces are ready to receive boxes.
- C. Verify that conditions are satisfactory for installation prior to starting work.

3.2 INSTALLATION

- A. Install products in accordance with manufacturer's instructions.
- B. Install boxes in accordance with NECA 1 (general workmanship) and, where applicable, NECA 130, including mounting heights specified in those standards where mounting heights are not indicated.
- C. Arrange equipment to provide minimum clearances in accordance with manufacturer's instructions and NFPA 70.
- D. Provide separate boxes for emergency power and normal power systems.
- E. Unless otherwise indicated, provide separate boxes for line voltage and low voltage systems.
- F. Flush-mount boxes in finished areas unless specifically indicated to be surface-mounted.
- G. Unless otherwise indicated, boxes may be surface-mounted where exposed conduits are indicated or permitted.
- H. Box Locations:
 1. Unless dimensioned, box locations indicated are approximate.
 2. Locate boxes as required for devices installed under other sections or by others.
 - a. Switches, Receptacles, and Other Wiring Devices: Comply with Section 26 27 26.
 3. Locate boxes so that wall plates do not span different building finishes.
 4. Locate boxes so that wall plates do not cross masonry joints.
 5. Unless otherwise indicated, where multiple outlet boxes are installed at the same location at different mounting heights, install along a common vertical center line.
 6. Do not install flush-mounted boxes on opposite sides of walls back-to-back. Provide minimum 6 inches horizontal separation unless otherwise indicated.
 7. Acoustic-Rated Walls: Do not install flush-mounted boxes on opposite sides of walls back-to-back; provide minimum 24 inches horizontal separation.
 8. Fire Resistance Rated Walls: Install flush-mounted boxes such that the required fire resistance will not be reduced.

- a. Do not install flush-mounted boxes on opposite sides of walls back-to-back; provide minimum 24 inches separation where wall is constructed with individual noncommunicating stud cavities or protect both boxes with listed putty pads.
- b. Do not install flush-mounted boxes with area larger than 16 square inches or such that the total aggregate area of openings exceeds 100 square inches for any 100 square feet of wall area.
9. Locate junction and pull boxes as indicated, as required to facilitate installation of conductors, and to limit conduit length and/or number of bends between pulling points in accordance with Section 26 05 33.13.
10. Locate junction and pull boxes in the following areas, unless otherwise indicated or approved by the Architect:
 - a. Concealed above accessible suspended ceilings.
 - b. Within joists in areas with no ceiling.
 - c. Electrical rooms.
 - d. Mechanical equipment rooms.
- I. Box Supports:
 1. Secure and support boxes in accordance with NFPA 70 and Section 26 05 29 using suitable supports and methods approved by the authority having jurisdiction.
 2. Provide independent support from building structure. Do not provide support from piping, ductwork, or other systems.
 3. Installation Above Suspended Ceilings: Do not provide support from ceiling grid or ceiling support system.
 4. Use far-side support to secure flush-mounted boxes supported from single stud in hollow stud walls. Repair or replace supports for boxes that permit excessive movement.
- J. Install boxes plumb and level.
- K. Flush-Mounted Boxes:
 1. Install boxes in noncombustible materials such as concrete, tile, gypsum, plaster, etc. so that front edge of box or associated raised cover is not set back from finished surface more than 1/4 inch or does not project beyond finished surface.
 2. Install boxes in combustible materials such as wood so that front edge of box or associated raised cover is flush with finished surface.
 3. Repair rough openings around boxes in noncombustible materials such as concrete, tile, gypsum, plaster, etc. so that there are no gaps or open spaces greater than 1/8 inch at the edge of the box.
- L. Install boxes as required to preserve insulation integrity.
- M. Install permanent barrier between ganged wiring devices when voltage between adjacent devices exceeds 300 V.
- N. Install firestopping to preserve fire resistance rating of partitions and other elements, using materials and methods specified in Section 07 84 00.
- O. Close unused box openings.
- P. Install blank wall plates on junction boxes and on outlet boxes with no devices or equipment installed or designated for future use.
- Q. Provide grounding and bonding in accordance with Section 26 05 26.
- R. Identify boxes in accordance with Section 26 05 53.

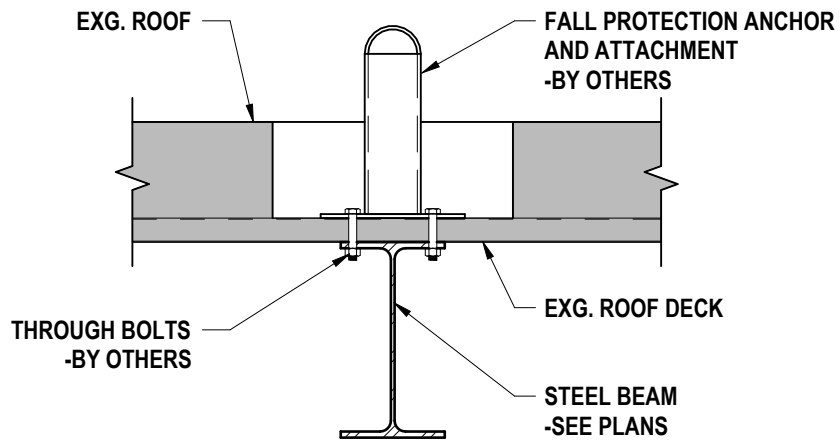
3.3 CLEANING

- A. Clean interior of boxes to remove dirt, debris, plaster and other foreign material.

3.4 PROTECTION

- A. Immediately after installation, protect boxes from entry of moisture and foreign material until ready for installation of conductors.

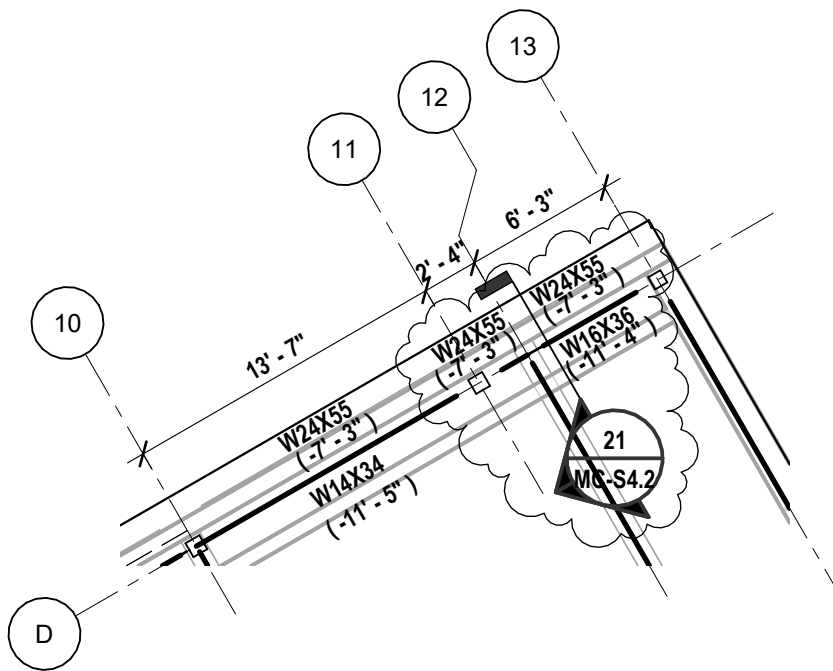
END OF SECTION



20 **FALL PROTECTION ANCHOR**
1" = 1'-0"


-ADD DETAIL 20 TO SHEET MC-S4.2

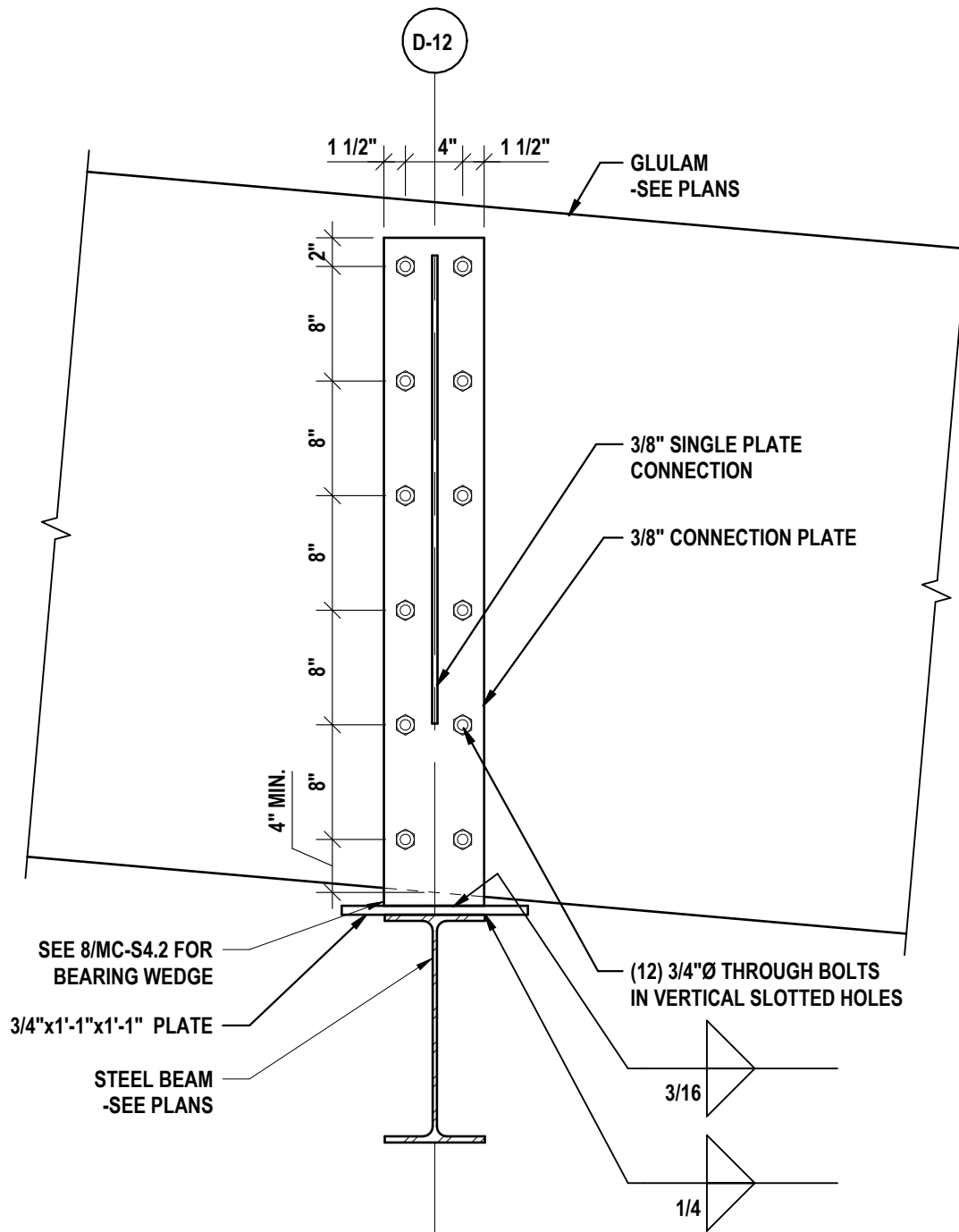
<p>FALL PROTECTION ANCHOR</p>	<p>HUNT ENGINEERS ARCHITECTS SURVEYORS ALBANY, NY - BINGHAMTON, NY - HORSEHEADS, NY - ROCHESTER, NY TOWANDA, PA - WILLIAMSPORT, PA WWW.HUNT-EAS.COM 607 - 358 - 1000 NY CERTIFICATE NO. 0018220 PA CERTIFICATE NO. TSC2203131464-1</p>	<p>AD3-S1</p>
<p>2025 CAPITAL PROJECT ALFRED-ALMOND CSD 6795 ROUTE 21 ALMOND, NY 14804</p>		<p>DATE: 07/06/2026</p> <p>PROJECT NO: 2028-059</p>



2 PARTIAL HIGH ROOF FRAMING PLAN - AREA D
 1/8" = 1'-0"

-FOR MORE INFORMATION SEE SHEET MC-S1.3

PARTIAL HIGH ROOF FRAMING PLAN - AREA D	 HUNT ENGINEERS ARCHITECTS SURVEYORS ALBANY, NY - BINGHAMTON, NY - HORSEHEADS, NY - ROCHESTER, NY TOWANDA, PA - WILLIAMSPORT, PA WWW.HUNT-EAS.COM 607 - 358 - 1000 NY CERTIFICATE NO. 0018220 PA CERTIFICATE NO. TSC2203131464-1	AD3-S2 DATE: 07/09/2026 PROJECT NO: 2028-059
2025 CAPITAL PROJECT ALFRED-ALMOND CSD 6795 ROUTE 21 ALMOND, NY 14804		



21 **GLULAM BEARING CONNECTION AT BEAM**
1" = 1'-0"

-ADD DETAIL 21 TO SHEET MC-S4.2

GLULAM BEARING CONNECTION AT BEAM

2025 CAPITAL PROJECT

ALFRED-ALMOND CSD

6795 ROUTE 21 ALMOND, NY 14804

Copyright: 2026

HUNT ENGINEERS | ARCHITECTS | SURVEYORS

ALBANY, NY - BINGHAMTON, NY - HORSEHEADS, NY - ROCHESTER, NY
TOWANDA, PA - WILLIAMSPORT, PA
WWW.HUNT-EAS.COM 607 - 358 - 1000
NY CERTIFICATE NO. 0018220 PA CERTIFICATE NO. TSC2203131464-1

AD3-S3

DATE:
07/09/2026

PROJECT NO:
2028-059

"IT IS A VIOLATION OF THE LAW FOR ANY PERSON TO MAKE UNAUTHORIZED ALTERATIONS OR ADDITIONS TO PLANS BEARING A LICENSED ENGINEER'S, ARCHITECT'S OR SURVEYOR'S SEAL."

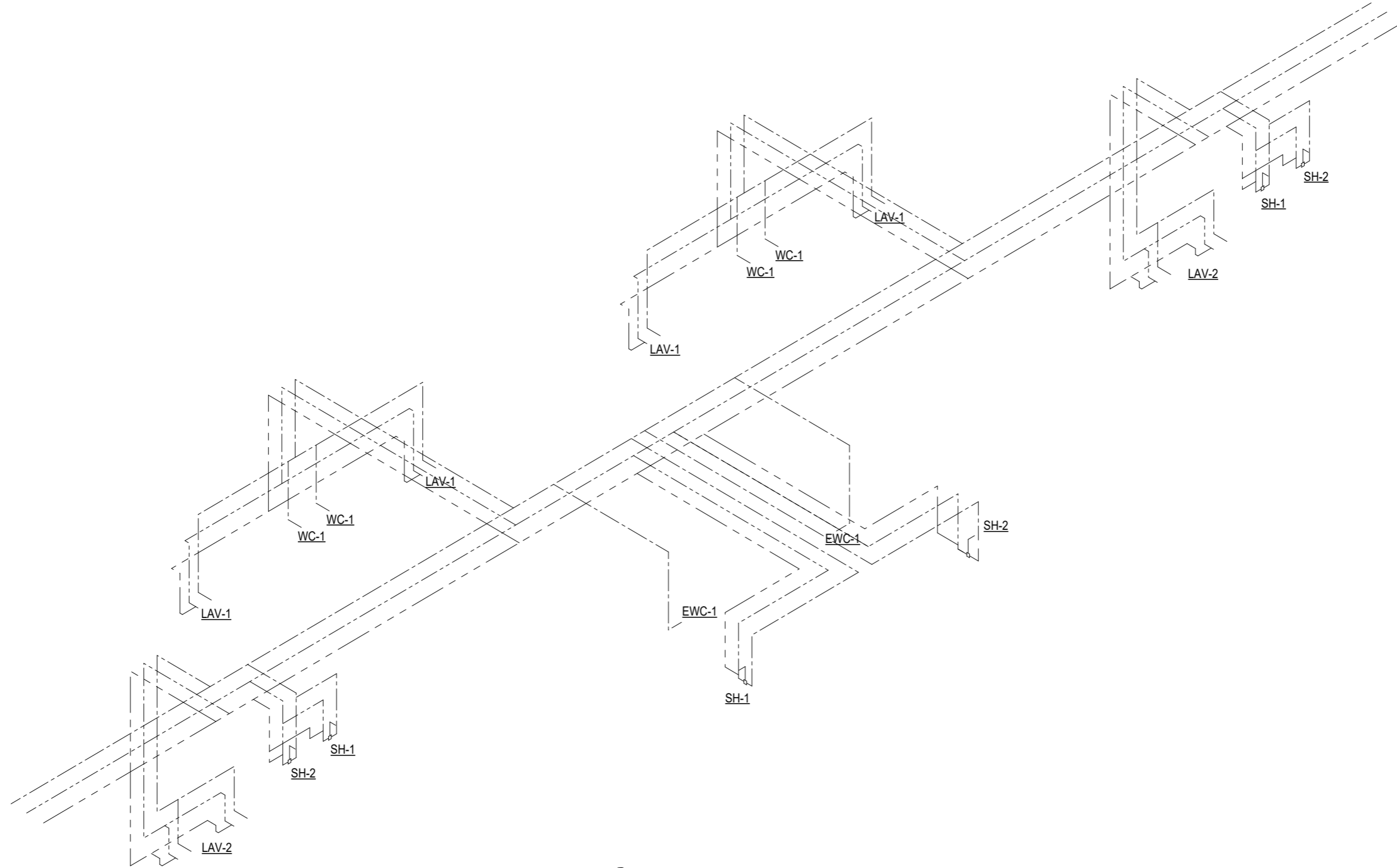
HUNT ENGINEERS | ARCHITECTS | SURVEYORS
 ALBANY, NY - BINGHAMTON, NY - HORSEHEADS, NY - ROCHESTER, NY
 TOWANDA, PA - WILLIAMSPORT, PA
 WWW.HUNT-EAS.COM 607 - 358 - 1000
 NY CERTIFICATE NO. 0018220 PA CERTIFICATE NO. TSC2203131464-1

COLUMN SCHEDULE

COLUMN LOCATION	SIZE	BASE REFERENCE	BASE OFFSET	TOP REFERENCE	TOP OFFSET	BASE PLATE MARK	NOTES
B-1	HSS5-1/2X5-1/2X5/16	0'-5 3/8"	-1' - 0"	14'-7 1/4"	-1' - 2"	BP-3	
C-2	HSS5-1/2X5-1/2X5/16	0'-5 3/8"	-1' - 0"	14'-7 1/4"	-1' - 2"	BP-3	
C-4	HSS5-1/2X5-1/2X5/16	0'-5 3/8"	-1' - 0"	14'-7 1/4"	-1' - 2"	BP-3	
C-6	HSS5-1/2X5-1/2X5/16	0'-5 3/8"	-1' - 0"	14'-7 1/4"	-1' - 2"	BP-3	
C-7	HSS5-1/2X5-1/2X5/16	0'-5 3/8"	-1' - 0"	14'-7 1/4"	-1' - 2"	BP-3	
C-8	HSS5-1/2X5-1/2X5/16	0'-5 3/8"	-1' - 0"	14'-7 1/4"	-1' - 2"	BP-3	
C-9	HSS5-1/2X5-1/2X5/16	0'-5 3/8"	-1' - 0"	14'-7 1/4"	-1' - 2"	BP-3	
C-11	HSS5-1/2X5-1/2X5/16	0'-5 3/8"	-1' - 0"	14'-7 1/4"	-1' - 2"	BP-3	
C-13	HSS5-1/2X5-1/2X5/16	0'-5 3/8"	-1' - 0"	14'-7 1/4"	-1' - 2"	BP-3	
D-1	HSS8X8X5/16	0'-5 3/8"	-1' - 0"	30'-0"	-11' - 3 1/4"	BP-3	
D-3	HSS8X8X5/16	0'-5 3/8"	-1' - 0"	30'-0"	-11' - 3 1/4"	BP-3	
D-5	HSS8X8X5/16	0'-5 3/8"	-1' - 0"	30'-0"	-11' - 3 1/4"	BP-3	
D-7	HSS8X8X5/16	0'-5 3/8"	-1' - 0"	30'-0"	-11' - 3 1/4"	BP-3	
D-8	HSS8X8X5/16	0'-5 3/8"	-1' - 0"	30'-0"	-11' - 3 1/4"	BP-3	
D-10	HSS8X8X5/16	0'-5 3/8"	-1' - 0"	30'-0"	-11' - 3 1/4"	BP-3	
D-11	HSS8X8X5/16	0'-5 3/8"	-1' - 0"	30'-0"	-7' - 3"	BP-8	
D-13	HSS7X7X5/16	0'-5 3/8"	-1' - 0"	30'-0"	-7' - 1"	BP-3	
E-13	HSS7X7X5/16	0'-5 3/8"	-1' - 0"	30'-0"	-5' - 7 1/2"	BP-9	
F1-FA	HSS5-1/2X5-1/2X5/16	0'-0"	-1' - 0"	24'-3"	0' - 0"	BP-7	
F1-FB	HSS5-1/2X5-1/2X5/16	0'-0"	-2' - 0"	24'-3"	0' - 0"	BP-6	
F-1	HSS8X8X5/16	0'-5 3/8"	-1' - 0"	30'-0"	-7' - 8" ±	BP-2	
G-13	HSS7X7X5/16	0'-5 3/8"	-1' - 0"	30'-0"	-3' - 6"	BP-9	
H-1	HSS8X8X5/16	0'-5 3/8"	-1' - 0"	30'-0"	-5' - 3" ±	BP-2	
I-13	HSS7X7X5/16	0'-5 3/8"	-1' - 0"	30'-0"	-0' - 8"	BP-9	
J-1	HSS8X8X5/16	0'-5 3/8"	-1' - 0"	30'-0"	-4' - 0 3/4"	BP-5	
J-3	HSS8X8X5/16	0'-5 3/8"	-1' - 0"	30'-0"	-4' - 0 3/4"	BP-4	
J-5	HSS8X8X5/16	0'-5 3/8"	-1' - 0"	30'-0"	-4' - 0 3/4"	BP-4	
J-7	HSS8X8X5/16	0'-5 3/8"	-1' - 0"	30'-0"	-4' - 0 3/4"	BP-4	
J-8	HSS8X8X5/16	0'-5 3/8"	-1' - 0"	30'-0"	-4' - 0 3/4"	BP-4	
J-10	HSS8X8X5/16	0'-5 3/8"	-1' - 0"	30'-0"	-4' - 0 3/4"	BP-4	
J-12	HSS8X8X5/16	0'-5 3/8"	-1' - 0"	30'-0"	-4' - 0 3/4"	BP-5	

COLUMN SCHEDULE
 2025 CAPITAL PROJECT
 ALFRED-ALMOND CSD
 6795 ROUTE 21 ALMOND, NY 14804

AD3-S4



1 LOCKER ROOM RISER DIAGRAM
N.T.S.

DRAWN BY: CJH
 CHECKED BY: JLG
 DATE: 04/07/2028
 Copyright: 2023

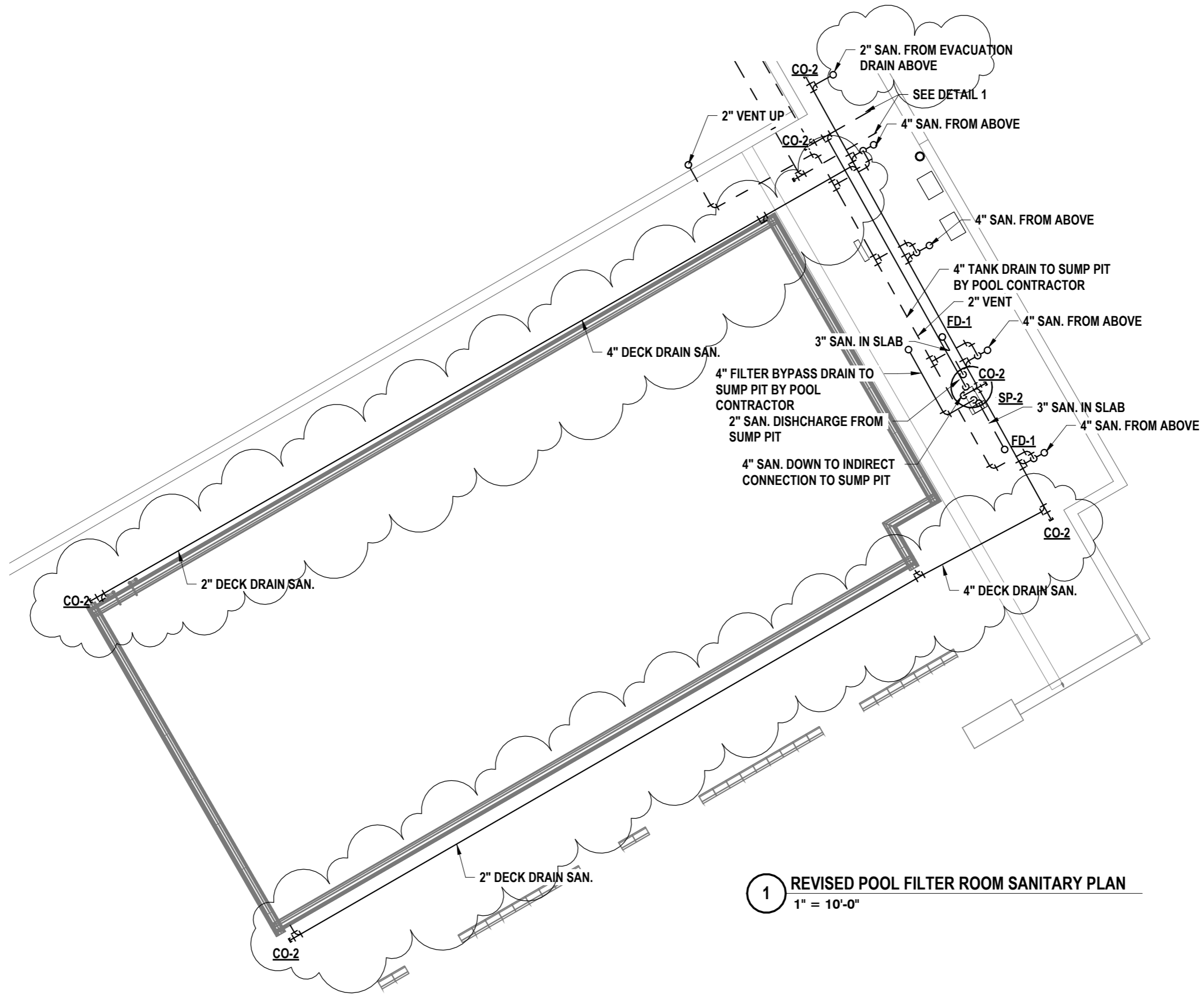
"IT IS A VIOLATION OF THE LAW FOR ANY PERSON TO MAKE UNAUTHORIZED ALTERATIONS OR ADDITIONS TO PLANS BEARING A LICENSED ENGINEER'S, ARCHITECT'S OR SURVEYOR'S SEAL."

HUNT ENGINEERS | ARCHITECTS | SURVEYORS
 HORSEHEADS, NY 607-358-1000 ROCHESTER, NY 585-327-7950
 TOWANDA, PA 570-265-4868 BINGHAMTON, NY 607-798-8081
 ALBANY, NY 607-798-8081 WWW.HUNT-EAS.COM
 NY CERTIFICATE NO. 0018220 PA CERTIFICATE NO. TSC2203131464-1

LOCKER ROOM RISER DIAGRAM
2025 CAPITAL PROJECT
ALFRED-ALMOND CSD
 6795 ROUTE 21, ALMOND, NY 14804

AD3-P1
 PROJECT NO: 2028-059

SED# MC: 02-01-01-04-0-001-037



1 REVISED POOL FILTER ROOM SANITARY PLAN
1" = 10'-0"

DRAWN BY: CJH
CHECKED BY: JDG
DATE: 04/07/2028
Copyright: 2023

"IT IS A VIOLATION OF THE LAW FOR ANY PERSON TO MAKE UNAUTHORIZED ALTERATIONS OR ADDITIONS TO PLANS BEARING A LICENSED ENGINEER'S, ARCHITECT'S OR SURVEYOR'S SEAL."

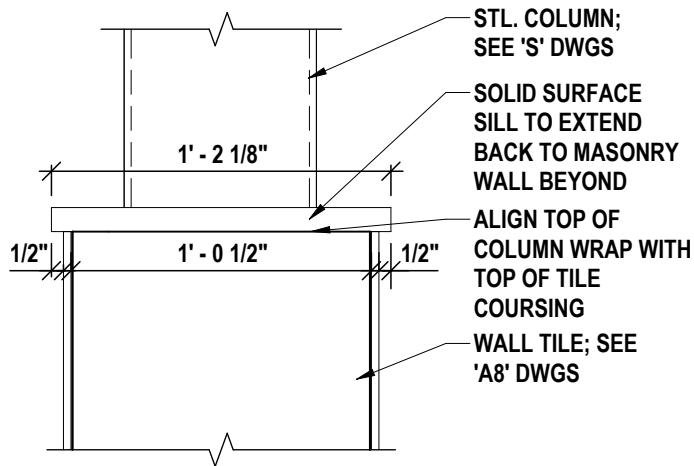
HUNT ENGINEERS | ARCHITECTS | SURVEYORS
HORSEHEADS, NY 607-358-1000 ROCHESTER, NY 585-327-7950
TOWANDA, PA 570-265-4868 BINGHAMTON, NY 607-798-8081
ALBANY, NY 607-798-8081 WWW.HUNT-EAS.COM
NY CERTIFICATE NO. 0018220 PA CERTIFICATE NO. TSC2203131464-1

REVISED POOL FILTER ROOM SANITARY PLAN
2025 CAPITAL PROJECT
ALFRED-ALMOND CSD
6795 ROUTE 21, ALMOND, NY 14804

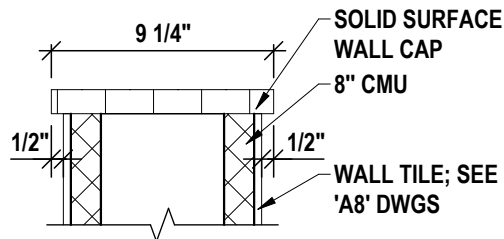
AD3-P2

PROJECT NO: 2028-059

SED# MC: 02-01-01-04-0-001-037



2 TYP. COLUMN WRAP CAP DETAIL
 1 1/2" = 1'-0"



1 SCORING TABLE WALL CAP DETAIL
 1 1/2" = 1'-0"

SOLID SURFACE SILL DETAILS

2025 CAPITAL PROJECT
ALFRED-ALMOND CSD

6795 ROUTE 21 ALMOND, NY 14804

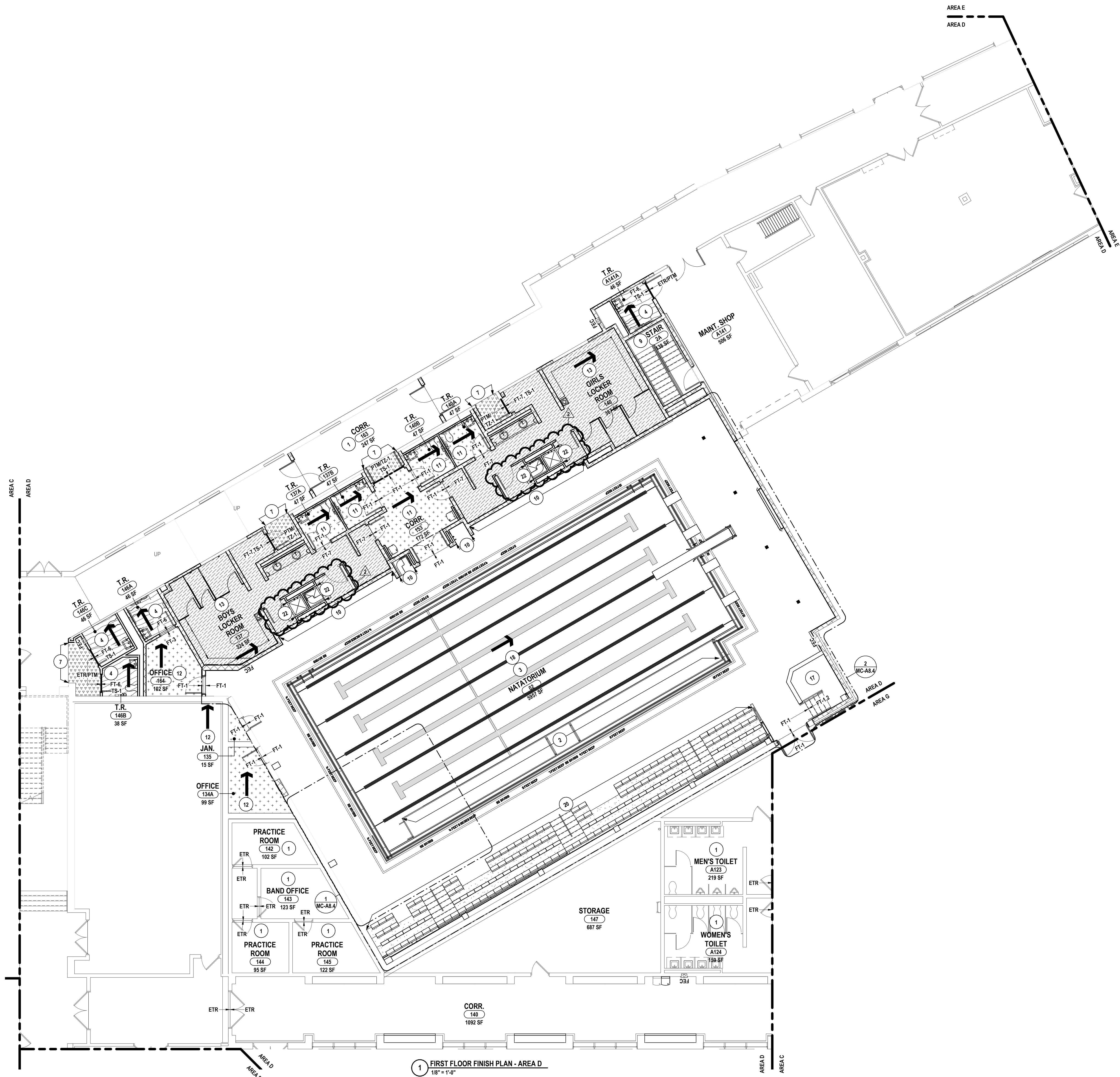
Copyright: 2026

HUNT ENGINEERS | ARCHITECTS | SURVEYORS
 ALBANY, NY - BINGHAMTON, NY - HORSEHEADS, NY - ROCHESTER, NY
 TOWANDA, PA - WILLIAMSPORT, PA
 WWW.HUNT-EAS.COM 607 - 358 - 1000
 NY CERTIFICATE NO. 0018220 PA CERTIFICATE NO. TSC2203131464-1

AD3-A1

DATE:
 07/08/2026

PROJECT NO:
 2028-059



1 FIRST FLOOR FINISH PLAN - AREA D
1/8" = 1'-0"

GENERAL NOTES - INTERIOR FLOOR FINISH:

- A ALL FLOOR FINISHES, WITH THE EXCEPTION OF CARPET, SHALL BE INSTALLED EXTENDING COMPLETELY UNDER NEW BUILT-IN CASEWORK, EVEN WHEN NOT SHOWN ON FLOOR FINISH PLANS.
- B ALL FLOOR FINISHES TO TRANSITION AT CENTERLINE OF DOOR JAMB UNLESS OTHERWISE NOTED ON FLOOR FINISH PLANS.
- C FLOOR FINISHES TO EXTEND UNDERNEATH COUNTERTOPS WHERE FLOORING WOULD OTHERWISE BE EXPOSED.
- D REFER TO FINISH KEY AND ROOM FINISH SCHEDULE FOR ALL FINISHES NOT INDICATED ON FLOOR FINISH PLANS.
- E PREP FLOORS ACCORDING TO SPECIFICATION 09 05 61, "COMMON WORK RESULTS FOR FLOOR PREPARATION".
- F PROVIDE ADA COMPLIANT TRANSITION STRIP WHEN ABUTTING FLOOR FINISHES DIFFER IN THICKNESS OR MATERIAL. REFER TO FINISH KEY AND ROOM FINISH SCHEDULE FOR DETAILS.
- G WHERE FLOOR TILE MEETS EXISTING FLOOR FINISHES AND NEWLY PATCHED TERRAZZO, BUILD UP TILE TO MEET LEVEL WITH ABUTTING FLOORING.

CONSTRUCTION NOTES - INTERIOR FLOOR FINISH

- 1 EXISTING FLOORING TO REMAIN, PATCH TO MATCH EXISTING FINISHES WHERE NEW CONSTRUCTION IMPACTS FINISH CONDITIONS.
- 2 POOL RAMP TO RECEIVE MOSAIC TILE, FT-4.5.
- 3 POOL DECK TO RECEIVE MOSAIC TILE, FT-1,2,3,4,5 IN INDICATED PATTERN. PROVIDE CB-4 AS BASE.
- 4 FLOOR TO RECEIVE MOSAIC FLOOR TILE, FT-6 IN INDICATED PATTERN. PROVIDE CB-1 AS BASE.
- 5 VESTIBULE TO RECEIVE CPT-1 WALK OFF CARPET SYSTEM, PROVIDE RB-1 AS BASE. TERMINATE CARPET AT STAIRS.
- 6 EXISTING FLOORING TO REMAIN ON STAIRS.
- 7 SAND AND REFINISH EXISTING ATHLETIC FLOORING. PROVIDE GAME LINES AS INDICATED ON ENLARGED ARCHITECTURAL GYMNASIUM LINEWORK PLANS. COLORS AS SELECTED BY ARCHITECT.
- 8 PATCH TO MATCH FLOORING WHERE NEW WORK IMPACTS EXISTING FLOOR FINISH CONDITIONS. TZ-1 TO MATCH EXISTING TERRAZZO.
- 9 ELEVATOR FLOOR TO RECEIVE CARPET TILE, CPT-2. PROVIDE RB-1 AS BASE.
- 10 STAIRCASE TO RECEIVE SEALED CONCRETE, SC-1. PROVIDE RB-1 AS BASE.
- 11 STUDENT AND SHOWER ALCOVES TO RECEIVE MOSAIC TILE, FT-1. PROVIDE CB-2,4 AS BASE.
- 12 FLOOR TO RECEIVE MOSAIC FLOOR TILE, FT-1. PROVIDE CB-1 AS BASE.
- 13 FLOOR TO RECEIVE MOSAIC FLOOR TILE, FT-1. PROVIDE CB-3 AS BASE.
- 14 FLOOR TO RECEIVE MOSAIC FLOOR TILE, FT-7. PROVIDE CB-3 AS BASE.
- 15 BASE BID: EXISTING FINISHES TO REMAIN ENTIRELY. ALT #3: FLOOR TO RECEIVE MOSAIC FLOOR TILE, FT-6 IN INDICATED PATTERN. PROVIDE CB-1 AS BASE.
- 16 FLOOR TO RECEIVE MOSAIC FLOOR TILE, FT-6 IN INDICATED PATTERN. PROVIDE CB-3 AS BASE.
- 17 BASE BID: EXISTING FINISHES TO REMAIN ENTIRELY. ALT #3: FLOOR TO RECEIVE MOSAIC FLOOR TILE, FT-4 IN INDICATED PATTERN. PROVIDE CB-3 AS BASE.
- 18 CONTINUE MOSAIC TILE, FT-1 ONTO STAIRS AND SCORE BOOTH. RISERS TO RECEIVE MOSAIC TILE, FT-2 AND TREADS TO RECEIVE FT-1.
- 19 BASE BID: POOL BASIN TO RECEIVE MARCITE FINISH, MC-1. REFER TO FINISH KEY AND SPECIFICATION 13 11 00 FOR FINISH DETAILS. ALT #6: POOL BASIN TO RECEIVE MOSAIC TILE, FT-4.5. FT-5 TO INDICATE RACING LANES, RACING TARGETS, AND 4" BREAK LINE AS SHOWN ON FLOOR FINISH PLAN.
- 20 PROVIDE EDGE PROTECTIVE TRANSITION WHERE FLOOR TILE MEETS EXISTING FLOORING AT DOOR THRESHOLD, TS-1. TERMINATE FLOOR TILE AT PRE-CAST CONCRETE BLEACHERS. PROVIDE CONTINUOUS SEALANT JOINT.
- 21 BASE BID: EXISTING FINISHES TO REMAIN ENTIRELY. ALT #3: PROVIDE EDGE PROTECTIVE TRANSITION WHERE FLOOR TILE MEETS EXISTING FLOORING AT DOOR THRESHOLD, TS-1.
- 22 CONTINUE FT-7 INTO SHOWER ROOMS, WHERE SOLID SURFACE SHOWERS ARE BEING INSTALLED. PROVIDE CB-6 AS BASE.

FLOOR FINISH LEGEND

	RF-1		CPT-1		FT-2		FT-6
	RF-2		CPT-2		FT-3		FT-7
	RF-3		RAF-1		FT-4		FTM EXISTING TERRAZZO FLOOR TZ-1
	RF-4		FT-1		FT-5		TS-1

DRAWN BY: PMP
 CHECKED BY: SVW
 DATE: 04/07/2026
 PHASE: CD

REVISION:
 1 06/03/2026 ISSUE FOR BID (ISSUED FOR A03)
 2 07/08/2026

DATE: 1 06/03/2026
 2 07/08/2026

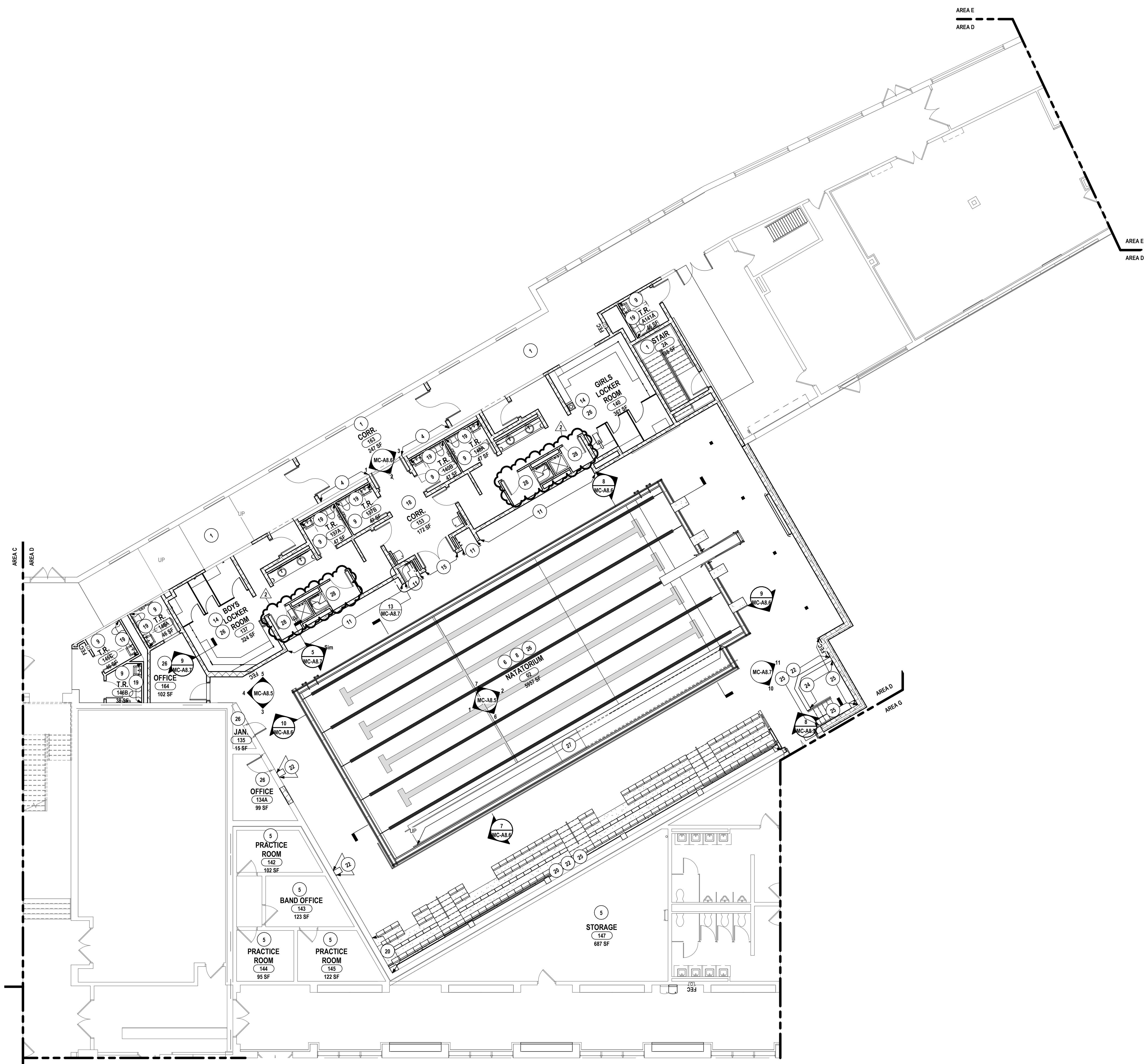
THIS IS A VALIDATION OF THE LAW FOR ANY PERSON TO MAKE UNAUTHORIZED ALTERATIONS OR MODIFICATIONS TO PLANS BEARING A LICENSED ENGINEER'S ARCHITECT'S OR SURVEYOR'S SEAL.

HUNT ENGINEERS | ARCHITECTS | SURVEYORS
 ALBANY, NY • BINGHAMTON, NY • HORSENEARDS, NY • ROCHESTER, NY
 WWW.HUNT-EAS.COM 887.558.1000
 NY CERTIFICATE NO. 0016220 PA CERTIFICATE NO. TSC220313464-1

FIRST FLOOR FINISH PLAN - AREA D
 2025 CAPITAL PROJECT
 ALFRED-ALMOND CSD
 6785 ROUTE 21 ALMOND, NY 14804

MC-A8.2
 PROJECT NO: 2025-059

SED #: 02-01-01-04-001037



1 FIRST FLOOR WALL FINISH PLAN - AREA D
1/8" = 1'-0"

- # GENERAL NOTES - INTERIOR WALL FINISH:**
- A DRAWINGS REPRESENT LOCATIONS OF NEW WALL FINISHES AND INDICATE PATTERNS FOR INSTALLATION. FOR A COMPLETE LIST OF FINISHES, REFER TO THE FINISH KEY AND ROOM FINISH SCHEDULE.
 - B REFER TO A2 DRAWINGS FOR CEILING HEIGHTS. VERIFY CEILING HEIGHTS IN THE FIELD PRIOR TO START OF WORK.
 - C PAINT ALL UNFINISHED EXPOSED HVAC EQUIPMENT INCLUDING DUCTWORK, AIR DIFFUSERS AND RETURNS AT CEILING PLANE TO MATCH ADJACENT CEILING FINISH COLOR OR ARCHITECT TO SELECT COLOR.
 - D REFER TO WALL FINISH LEGEND AND ELEVATIONS FOR FINISHES THAT REQUIRE ADDITIONAL INFORMATION REGARDING EXTENTS OR INSTALLATION PATTERNING.
 - E PAINT OR STAIN ALL NEW INTERIOR WINDOW TRIM AND DOOR FRAMES. REFER TO FINISH KEY FOR COLORS.
 - F FOR ALL WALLS RECEIVING PAINT, EXTEND SPECIFIED PAINT SYSTEM TO B.O. CEILING/DECK REGARDLESS OF SPECIFIED COLOR OF SUBSTRATE.

- CONSTRUCTION NOTES - INTERIOR WALL FINISH:**
- 1 ALL WALLS TO RECEIVE PAINT, PNT-1 UNLESS NOTED OTHERWISE.
 - 2 PROVIDE PAINT, NEW PAINT TO MATCH EXISTING WALL COLOR AND FINISHES.
 - 3 ACCENT WALL TO RECEIVE CUSTOM PRINTED WALL COVERING, WC-2, CONTINUOUS THROUGH ALCOVE. REFER TO 4.5/MC-A8.6 FOR PLACEMENT DETAILS.
 - 4 ACCENT WALL TO RECEIVE CUSTOM PRINTED WALL COVERING, WC-1, CONTINUOUS THROUGH ALCOVE. REFER TO 1.2/3/MC-A8.6 FOR PLACEMENT DETAILS.
 - 5 EXISTING FINISHES TO REMAIN COMPLETELY, PATCH TO MATCH EXISTING WALL FINISHES WHERE NEW CONSTRUCTION IMPACTS EXISTING FINISH CONDITIONS.
 - 6 WALLS TO RECEIVE FABRIC WRAPPED ACOUSTIC WALL PANELS, AWP-1.2 IN INDICATED PATTERNS. REFER TO 1.2/4/15/MC-A8.5, POOL FINISH ELEVATIONS, FOR DETAILS.
 - 7 PAINT ALL NEW DOOR FRAMES PNT-4 U.N.O.
 - 8 ALL WALLS TO RECEIVE WALL TILE, WT-1.2,3, IN INDICATED PATTERN. PROVIDE TR-1 AS INDICATED. REFER TO 3/MC-A8.7, INTERIOR FINISH DETAILS, FOR PATTERN DETAILS. PAINT, PNT-5 ABOVE.
 - 9 TYPICAL WALLS TO RECEIVE WALL TILE, WT-5.6,7 IN INDICATED PATTERN, PROVIDE TR-3,4 AS INDICATED. PROVIDE PAINT, PNT-1 ABOVE. REFER TO 1/MC-A8.7 FOR DETAILS.
 - 10 REPLACE EXISTING WALL PADS WITH WP-1.
 - 11 ALCOVE TO RECEIVE WALL TILE, WT-4 AT FULL HEIGHT INCLUDING INTERIOR WALLS AND CEILINGS AS DETAILED ON 4.5/MC-A8.7, PROVIDE TR-2 AS DETAILED.
 - 12 ALL WALLS TO RECEIVE PAINT, PNT-1,2,3. REFER TO SHEETS MC-A8.12 AND MC-A8.13 FOR PAINT DETAILS.
 - 13 PROVIDE 1 AND 2 TIER LOCKERS, LK-1.2, AS INDICATED ON ARCHITECTURAL ELEVATIONS.
 - 14 TILE UP TO BASE OF LOCKER USING FT-2. REFER TO 3/MC-A8.7.
 - 15 PROVIDE CUSTOM PRINTED RESIN PANEL, RP-1 IN LOCATION INDICATED ON 15/MC-A8.5. ARCHITECT TO PROVIDE ARTWORK.
 - 16 BASE BID: EXISTING FINISHES TO REMAIN ENTIRELY. ALT #3: TYPICAL WALLS TO RECEIVE WALL TILE, WT-5.6,7 IN INDICATED PATTERN, 1/MC-A8.7, PROVIDE TR-3,4 AS INDICATED. PROVIDE PAINT, PNT-1 ABOVE.
 - 17 BASE BID: EXISTING FINISHES TO REMAIN ENTIRELY. ALT #3: ALL WALLS TO RECEIVE PAINT, PNT-1 UNLESS NOTED OTHERWISE.
 - 18 ALL WALLS TO RECEIVE HIGH PERFORMANCE PAINT, PNT-6.
 - 19 ACCENT WALL TO RECEIVE WALL TILE, WT-5.6,7 IN INDICATED PATTERN 2/MC-A8.7.
 - 20 TERMINATE WALL TILE PATTERN WHERE IT MEETS CONCRETE BLEACHERS. REFER TO INTERIOR ELEVATIONS FOR DETAILS. ENSURE PATTERN IS ALIGNED TO TOP OF ADJACENT WALL.
 - 21 PROVIDE SOLID SURFACE, SSM-1 COUNTERTOP.
 - 22 CAP HALF WALL AND COLUMN COVERS WITH SOLID SURFACE MATERIAL, SSM-1.
 - 23 BASE BID: EXISTING FINISHES TO REMAIN ENTIRELY. ALT #3: ACCENT WALL TO RECEIVE WALL TILE, WT-5.6,7 IN INDICATED PATTERN, 2/MC-A8.7.
 - 24 PAINT INSIDE OF COMMENTING PLATFORM, PNT-5 U.N.O.
 - 25 CONTINUE WALL TILE PATTERN, WT-1.2,3 TO EXTENTS SHOWN.
 - 26 ALL WALLS TO RECEIVE HIGH PERFORMANCE PAINT, PNT-5 UNLESS OTHERWISE NOTED.
 - 27 PROVIDE HIGH PERFORMANCE COATING FOR POOL RAILINGS, PNT-6, UNLESS OTHERWISE NOTED.
 - 28 PROVIDE SOLID SURFACE SHOWER SURROUNDS, SSM-2.

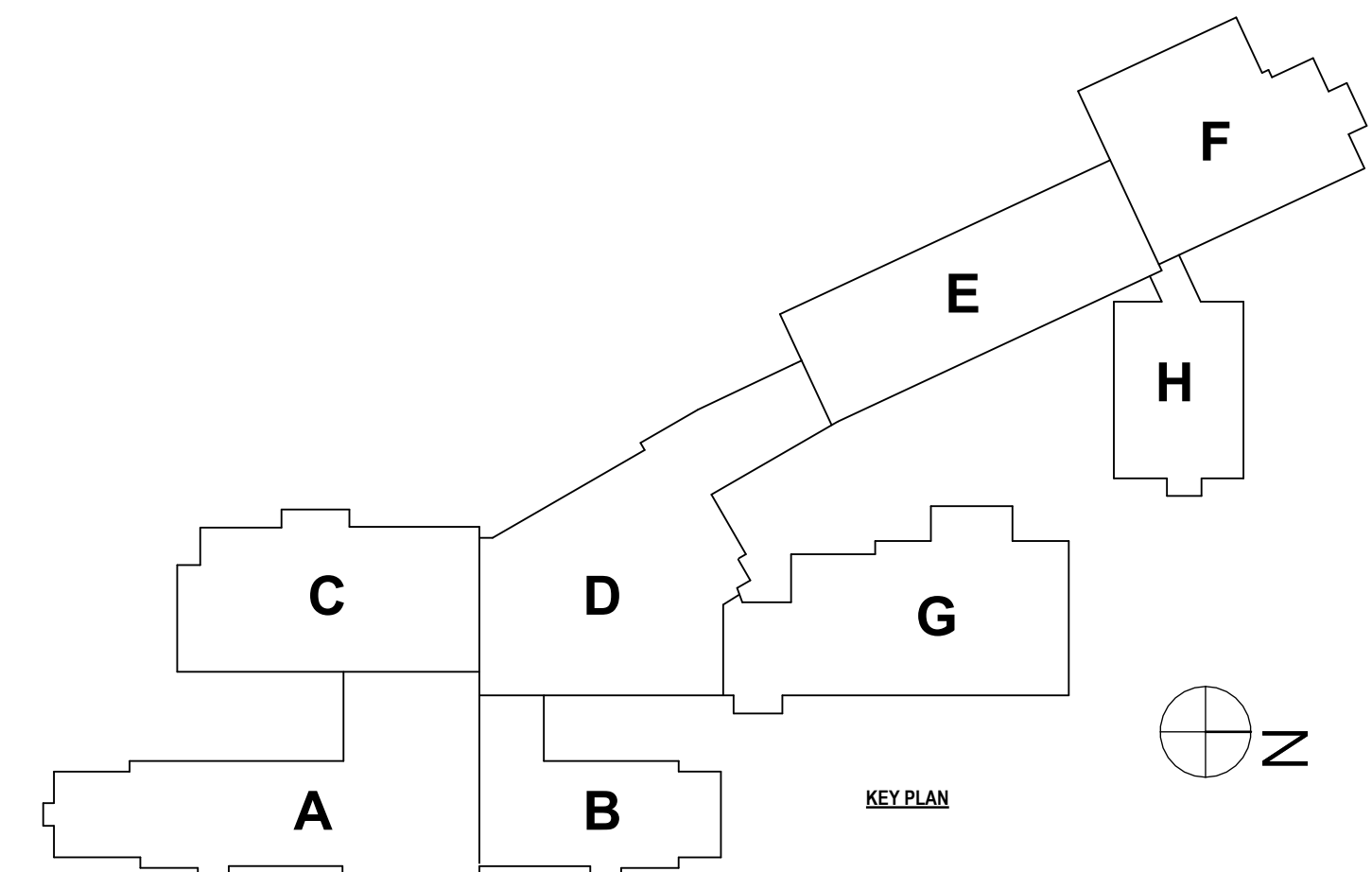
WALL FINISH LEGEND:

DRAWN BY:	PMM
CHECKED BY:	SVW
DATE:	04/07/2026
PHASE:	CP
REVISION:	ISSUE FOR BID (ISSUED FOR A03)
# DATE:	1 08/02/2025 2 07/08/2025

TITLE & LOCATION OF THE LAW FOR ANY PERSON TO MAKE UNAUTHORIZED ALTERATIONS OR ADDITIONS TO PLANS BEARING A LICENSED ENGINEER'S ARCHITECT'S OR SURVEYOR'S SEAL.

HUNT ENGINEERS | ARCHITECTS | SURVEYORS
ALBANY, NY • BINGHAMTON, NY • HORSESHOE FALLS, NY • ROCHESTER, NY
WWW.HUNT-EAS.COM 887.558.1000
NY CERTIFICATE NO. 0016220 PA CERTIFICATE NO. TSC2208134684-1

FIRST FLOOR WALL FINISH PLAN - AREA D
2025 CAPITAL PROJECT
ALFRED-ALMOND CSD
6785 ROUTE 21 ALMOND, NY 14804
MC-A8.3
PROJECT NO: 2025-059



SED #: 02-01-04-001037

1/8" ALFRED ALMOND

1/8" EAGLES NEST

1 SIGN TYPE 1 - DIMENSIONAL LETTERS
3/4" = 1'-0"

1/2" THICK DIMENSIONAL RESIN LETTERS, MOUNTED AS RECOMMENDED BY MANUFACTURER.

ALTERNATE ROOM FINISH SCHEDULE table with columns: ROOM #, ROOM NAME, FLOOR FINISH, BASE FINISH, WALL FINISH, DOOR FRAME COLOR, CEILING FINISH, COUNTERTOP FINISH, REMARKS. Includes rooms like NATATORIUM, PASSAGE, T.R., and LOCKER ROOMS.

ROOM FINISH SCHEDULE table with columns: ROOM #, ROOM NAME, FLOOR FINISH, BASE FINISH, WALL FINISH, DOOR FRAME COLOR, CEILING FINISH, COUNTERTOP FINISH, REMARKS. Includes rooms like CORR, T.R., OFFICE, LOCKER ROOMS, STAIR, PRACTICE ROOM, STORAGE, and GYMNASIUM.

FINISH KEY table with columns: ABBR., MATERIAL TYPE, MANUFACTURER, SERIES, SIZE, NUMBER, COLOR, SECTION #, LOCATION/REMARKS. Lists materials like FABRIC WRAPPED PET-CORE, VINYL WALK OFF MAT, CERAMIC MOSAIC TILE, etc.

REVISION: ISSUE FOR BID 1 08/03/2026 2 07/08/2026 3 07/08/2026

DATE: 08/03/2026 07/08/2026 07/08/2026

PHASE: CP

DRAWN BY: PMP
CHECKED BY: SVW
DATE: 04/07/2026
PHASE: CP

THIS IS A VOLUNTARY STATEMENT OF THE LAW FOR ANY PERSON TO MAKE (UNAUTHORIZED ALTERATIONS OR MODIFICATIONS TO PLANS BEARING ALFRED ALMOND ENGINEERS ARCHITECTS SURVEYORS SEAL)

HUNT ENGINEERS ARCHITECTS | SURVEYORS
ALBANY, NY - BINGHAMTON, NY - HORSESHOE FALLS, NY - ROCHESTER, NY
WWW.HUNT-EAS.COM 887-356-1000
NY CERTIFICATE NO. 0016220 PA CERTIFICATE NO. TSC220131464-1

INTERIOR FINISH SCHEDULES
2025 CAPITAL PROJECT
ALFRED-ALMOND CSD
6795 ROUTE 21 ALMOND, NY 14804
PROJECT NO: 2025-059

MC-A9.1