

ArnotHealth

ARNOT OGDEN MEDICAL CENTER

EMERGENCY DEPARTMENT EXPANSION & RENOVATION

600 Roe Ave, Elmira, NY 14905

CON #: **181305**

004987.21
ISSUED FOR CONSTRUCTION
08/29/2019

CANNONDESIGN

2170 Whitehaven Road
Grand Island, New York 14072
T: 716.773.6800
F: 716.773.5909

BOSTON NEW YORK BALTIMORE WASHINGTON DC BUFFALO TORONTO MONTREAL PITTSBURGH
CHICAGO ST. LOUIS VANCOUVER SAN FRANCISCO LOS ANGELES PHOENIX MUMBAI ABU DHABI

Consultants:

Watts Architecture & Engineering
Civil Consultant
95 Perry St, Suite 300
Buffalo, NY 14203
p. 716.206.5172
f. 716.206.5199

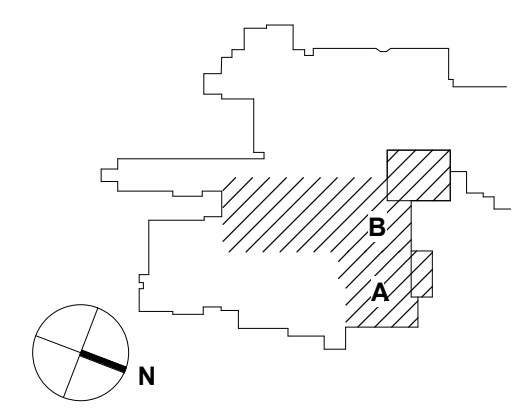


ISSUED FOR CONSTRUCTION

CONSTRUCTION
DOCUMENTS
2019.08.29

CON #181305

No.	Description	Date
-----	-------------	------



KEY PLAN

DRAWING INDEX

Project No.: 004987.21 Checked by: Checker

G0001

DRAWING INDEX - GENERAL	
SHEET NUMBER	SHEET NAME
G0000	COVER SHEET
G0101	LEVEL 01 CODE COMPLIANCE

DRAWING INDEX - DEMOLITION	
SHEET NUMBER	SHEET NAME
D0061	ELECTRICAL DEMOLITION SITE PLAN
D0201A	LEVEL 01 DEMOLITION PLAN - AREA A
D0201B	LEVEL 01 DEMOLITION PLAN - AREA B
D0202B	LEVEL 02 DEMOLITION PLAN - AREA B
D0300	LEVEL 00 PLUMBING DEMOLITION
D0301	LEVEL 01 PLUMBING DEMOLITION
D0401	LEVEL 01 MEDICAL GAS DEMOLITION
D0501	LEVEL 01 FIRE PROTECTION DEMOLITION
D0600	LEVEL 00 - HVAC DEMOLITION PLAN
D0601	LEVEL 01 - HVAC DEMOLITION PLAN
D0800	LEVEL 00 ELECTRICAL DEMOLITION PLAN
D0801	LEVEL 01 ELECTRICAL DEMOLITION PLAN
D0802	LEVEL 02 AND 04 ELECTRICAL DEMOLITION PLAN

DRAWING INDEX - CIVIL	
SHEET NUMBER	SHEET NAME
C-100	CIVIL SEDIMENT & EROSION CONTROL PLAN
C-101	CIVIL SITE DEMOLITION PLAN
C-110	CIVIL SITE PLAN
C-111	CIVIL SITE LAYOUT PLAN
C-112	LANDSCAPE PLAN
C-120	CIVIL GRADING PLAN
C-130	CIVIL SITE UTILITY PLAN
C-500	CIVIL SITE DETAILS
C-501	CIVIL SITE DETAILS
C-502	CIVIL SITE UTILITY DETAILS
C-503	SEDIMENT & EROSION CONTROL DETAILS

DRAWING INDEX - STRUCTURAL	
SHEET NUMBER	SHEET NAME
S0001	GENERAL NOTES, LEGENDS AND ABBREVIATIONS
S0101	BASEMENT AND FOUNDATION PLAN
S0102	LEVEL 02 FRAMING PLAN
S0201	STEEL COLUMN SCHEDULE AND DETAILS
S0301	TYPICAL FOUNDATION DETAILS
S0302	TYPICAL FOUNDATION DETAILS
S0311	FOUNDATION DETAILS
S0501	TYPICAL STEEL FRAMED DETAILS
S0503	TYPICAL STEEL DECK DETAILS

DRAWING INDEX - ARCHITECTURAL	
SHEET NUMBER	SHEET NAME
A0001	SYMBOLS & ABBREVIATIONS
A0101	LEVEL 01 PLAN
A0102	LEVEL 01 DIMENSION AND PARTITION PLAN
A0103	LEVEL 02 ROOF PLAN
A0201	ENLARGED PLANS
A0202	ENLARGED PLANS
A0203	ENLARGED PLANS
A0204	ENLARGED PLANS
A0301	EXTERIOR ELEVATIONS
A0302	BUILDING SECTIONS
A0310	EXTERIOR OPENING TYPES AND SCHEDULE
A0401	WALL SECTIONS
A0402	CANOPY SECTIONS
A0403	EXTERIOR DETAILS
A0404	EXTERIOR DETAILS
A0405	EXTERIOR PLAN DETAILS
A0406	EXTERIOR PLAN DETAILS
A0410	FLASHING DIAGRAMS AND ROOF DETAILS
A0601	INTERIOR ELEVATIONS
A0602	INTERIOR ELEVATIONS
A0603	INTERIOR ELEVATIONS
A0701	LEVEL 01 REFLECTED CEILING PLAN
A0801	INTERIOR DETAILS
A0802	INTERIOR DETAILS
A0803	CEILING DETAILS
A0804	PATIENT CONSOLE UNIT DETAILS
A0805	WALL PROTECTION
A0901	MILLWORK DETAILS
A0902	MILLWORK DETAILS
A0903	MILLWORK DETAILS
A1001	PARTITION TYPES
A1002	PARTITION TYPES
A1003	EQUIPMENT SCHEDULE
A1004	DOORS & BORROWED LITES
A1005	DOORS & BORROWED LITES SCHEDULE
A1200	GENERAL FINISH NOTES & COLOR LEGEND
A1201	ROOM FINISH SCHEDULE LEVEL 01
A1231	LEVEL 01 FINISH PLAN
A1301	LEVEL 01 PLAN - WALL PROTECTION

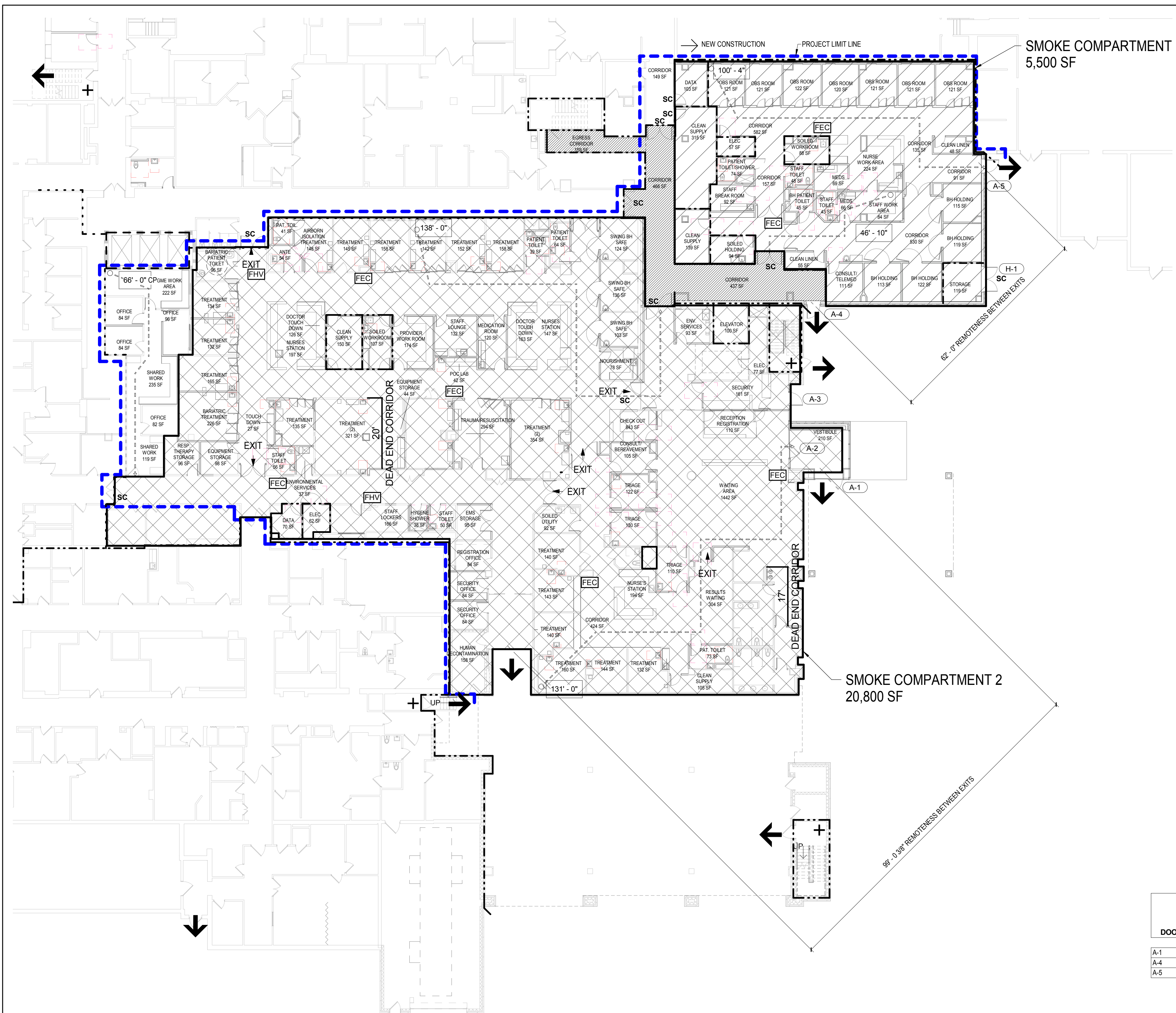
DRAWING INDEX - HVAC	
SHEET NUMBER	SHEET NAME
M0001	SYMBOLS, ABBREVIATIONS, AND GENERAL NOTES
M0100	LEVEL 00 - HVAC PLAN
M0101	LEVEL 01 - HVAC DUCTWORK PLAN
M0102	LEVEL 02 ROOF - HVAC DUCTWORK PLAN
M0201	LEVEL 01 - HVAC PIPING PLAN - AREA B
M0501	SCHEDULES
M0502	VENTILATION SCHEDULE
M0601	FLOW AND CONTROL DIAGRAMS
M0602	FLOW AND CONTROL DIAGRAMS
M0701	DETAILS
M0702	DETAILS

DRAWING INDEX - PLUMBING	
SHEET NUMBER	SHEET NAME
P0001	LEGENDS, SYMBOLS & ABBREVIATIONS
P0100	LEVEL 00 PLUMBING PLAN
P0101	LEVEL 01 PLUMBING PLAN
P0102	LEVEL 02 PLUMBING PLAN
P0201	LEVEL 01 MEDICAL GAS PLAN
P0301	RISER DIAGRAMS
P0302	RISER DIAGRAMS
P0303	RISER DIAGRAMS
P0304	RISER DIAGRAMS
P0305	RISER DIAGRAMS
P0306	RISER DIAGRAMS
P0307	RISER DIAGRAMS
P0401	ALTERNATES

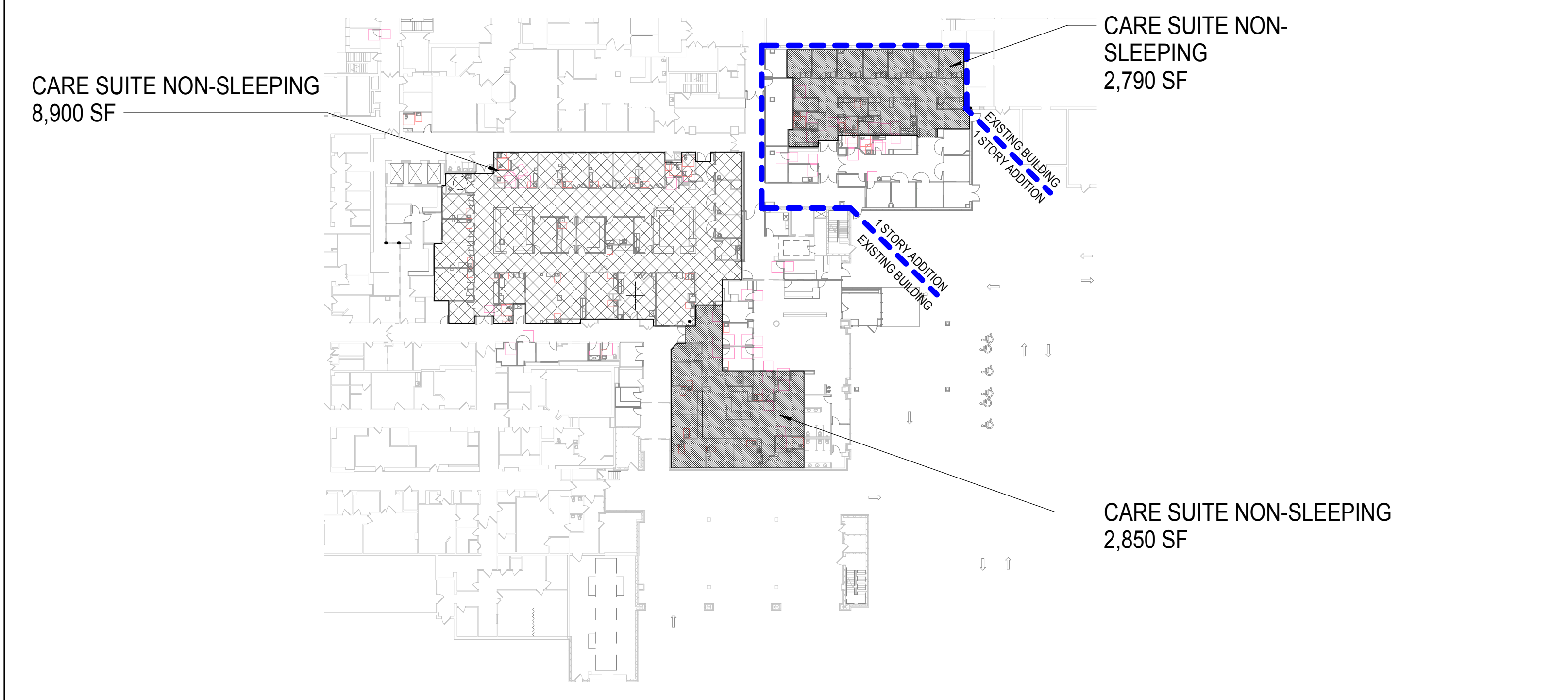
DRAWING INDEX - FIRE PROTECTION	
SHEET NUMBER	SHEET NAME
F0001	LEGENDS, SYMBOLS & ABBREVIATIONS
F0101	LEVEL 01 FIRE PROTECTION PLAN

DRAWING INDEX - ELECTRICAL	
SHEET NUMBER	SHEET NAME
E0001	NOTES, LEGENDS, SYMBOLS AND ABBREVIATIONS
E0051	ELECTRICAL SITE PLAN
E0101	LEVEL 01 LIGHTING PLAN
E0200	LEVEL 00 POWER AND SYSTEMS PLAN
E0201	LEVEL 01 POWER AND SYSTEMS PLAN
E0202	LEVEL 02 AND 04 POWER AND SYSTEMS PLANS
E0521	POWER RISER DIAGRAMS
E0541	SYSTEMS RISER DIAGRAMS
E0601	LIGHTING SCHEDULES
E0621	POWER SCHEDULES
E0622	PANELBOARD SCHEDULES
E0623	PANELBOARD SCHEDULES
E0624	PANELBOARD SCHEDULES
E0625	PANELBOARD SCHEDULES
E0721	POWER DETAILS
E0722	POWER DETAILS
E0723	POWER DETAILS

DRAWING INDEX - TELECOM	
SHEET NUMBER	SHEET NAME
T0001	NOTES, LEGENDS, SYMBOLS, ABBREVIATIONS AND SCHEDULES
T0070	LEVEL 01 TELECOMMUNICATIONS CABLE TRAY
T0101	LEVEL 01 TELECOMMUNICATIONS PLAN
T0201	LEVEL 01 SECURITY SYSTEMS PLAN
T0401	ENLARGED PLANS
T0501	TELECOMMUNICATIONS SYSTEMS RISER DIAGRAMS
T0521	AUDIO VISUAL SYSTEMS RISER DIAGRAMS
T0541	SECURITY SYSTEMS RISER DIAGRAMS
T0701	TELECOMMUNICATIONS DETAILS
T0702	TELECOMMUNICATIONS DETAILS
T0741	SECURITY SYSTEMS DETAILS



LEVEL 01 CODE COMPLIANCE PLAN



LEVEL 01 SUITE KEY PLAN

FIRE RESISTANCE RATINGS

ITEM	FIRE RATING	NFPA 220 - TABLE 4.1.1 - TYPE II/222	FIRE RATING	SUMMARY FIRE RATING	UL RATING
STRUCTURAL FRAME	2 HRS	COLUMNS - TUBE STEEL W.F.	2 HRS 2 HRS		X795
NON-BEARING WALLS AND PARTITIONS					
EXTERIOR SEPARATION >30'	0 HRS	EXTERIOR NON-BEARING WALLS SEPARATION >30'	0 HRS	0 HRS	
INTERIOR	0 HRS	INTERIOR BEARING WALLS	0 HRS	0 HRS	
FLOOR CONSTRUCTION	2 HRS	FLOOR - CEILING ASSEMBLIES	2 HRS		N708
ROOF CONSTRUCTION	1 1/2 HR	ROOF - CEILING ASSEMBLIES	1 1/2 HR		P732
MISCELLANEOUS RATINGS:					
IBC 2015		NFPA 101:		SUMMARY FIRE RATING	
SHAFT ENCLOSURES (B-713)	2 HRS	SHAFT ENCLOSURES	2 HRS	2 HRS	
4 OR MORE STORIES < 4 STORIES	1 HR	4 OR MORE STORIES < 4 STORIES	1 HR	1 HR	
CORRIDORS	0 HRS	CORRIDORS	0 HRS	0 HRS	
VERTICAL EXIT ENCLOSURES		VERTICAL EXIT ENCLOSURES			
4 OR MORE STORIES < 4 STORIES	2 HRS 1 HR	4 OR MORE STORIES < 4 STORIES	2 HRS 1 HR	2 HRS 1 HR	
SMOKE BARRIERS (B-709)	1 HR	SMOKE BARRIERS	1 HR	1 HR	
FIRE PARTITIONS (B-708)	1 HR	FIRE PARTITIONS	1 HR	1 HR	
FIRE BARRIER (B-707)	2 HR	FIRE BARRIER	2 HR	2 HR	
SOILED LINEN ROOMS (B-509)	1 HR	SOILED LINEN ROOMS	1 HR	1 HR	
STORAGE ROOMS > 100 SF	1 HR	STORAGE ROOMS > 100 SF	1 HR	1 HR	
OPENING PROTECTIVES (B-716)	45 MIN IN 1 HR PART. 90 MIN IN 2 HR PART.	OPENING PROTECTIVES	45 MIN IN 1 HR PART. 90 MIN IN 2 HR PART.	45 MIN IN 1 HR PART. 90 MIN IN 2 HR PART.	

APPLICABLE CODES, STANDARDS, AND ORDINANCES:

- CODE STANDARD OR ORDINANCE
- 2015 INTERNATIONAL BUILDING CODE (WITH 2017 NY STATE SUPPLEMENT)
- 2015 INTERNATIONAL MECHANICAL CODE
- 2015 INTERNATIONAL PLUMBING CODE
- 2015 INTERNATIONAL FUEL GAS CODE
- 2015 INTERNATIONAL ENERGY CONSERVATION CODE
- INTERNATIONAL FIRE CODE
- 2015 NATIONAL ELECTRICAL CODE (WITH AMENDMENTS)
- 10 NYCRR PART 711 AND PART 712
- 2014 FGI GUIDELINES FOR DESIGN AND CONSTRUCTION OF HOSPITAL AND HEALTH CARE FACILITIES CHAPTER 2.2.5:1 EMERGENCY DEPARTMENT
- 2012 NFPA 101 LIFE SAFETY CODE - CHAPTER 18 NEW HEALTHCARE OCCUPANCIES
- 2012 NFPA 99
- ICC/ANSI A117.1 - 2009 ACCESSIBLE AND USABLE BUILDINGS AND FACILITIES

GENERAL INFORMATION:

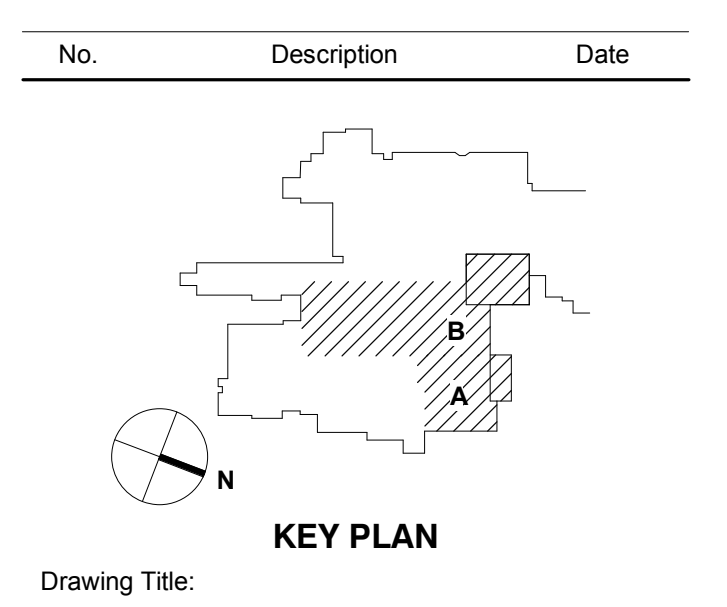
HEIGHT AND BUILDING AREA	EXISTING BUILDING	NEW CONSTRUCTION	LEVEL	RENOVATION	AUTOMATIC SPRINKLER SYSTEM:	CONSTRUCTION CLASSIFICATION COMPLIANCE:	USE AND OCCUPANCY CLASSIFICATION	EMERGENCY DEPARTMENT	NUMBER OF EXITS	ACTUAL	SPACE WITH ONE EXIT	ACCESSIBILITY	ENTRANCE	SMOKE/FIRE COMPARTMENT SUMMARY	SUITE SUMMARY	EXIT ACCESS	CORRIDOR FIRE RATING	CORRIDOR WIDTH	CODE SECTION	COMMON PATH OF TRAVEL (CPT)	DEAD ENDS	STC RATINGS	
	TABLE 504 I-2 HOSPITAL PARTIALLY SPRINKLERED UNLIMITED AREA, UNLIMITED STORIES 6 STORIES	TABLE 504 I-2 HOSPITAL - FULLY SPRINKLERED UNLIMITED AREA, UNLIMITED STORIES 6,250 SF NEW CONSTRUCTION 21,500 SF RENOVATIONS	FIRST	FIRST FLOOR	YES NFPA 13 FIRE ALARM SYSTEM: YES NFPA 72	TYPE B NFPA 220 TYPE IB/222 TYPE B NFPA 220 TYPE IB/222	B-308 I-2 INSTITUTIONAL HOSPITAL - EMERGENCY DEPARTMENT NONE	B-TABLE 1004 100 SF/OCCUPANT	20,000 SF / 100 = 200 OCCUPANTS 1,000 SF/100 = 10 OCCUPANTS 6,000 SF / 100 = 60 OCCUPANTS	B-1006.3.1 - 2 MINIMUM REQUIRED 2012 NFPA 101 18.2.5 - 2 MINIMUM REQ.	OBSERVATION UNIT 50 OCC. X 2' = 10' EGRESS WIDTH 2 EXITS @ 44" EGRESS CAPACITY EACH EMERGENCY DEPARTMENT TREATMENT AREA 210 OCC X 2' = 42" EGRESS WIDTH 1 EXIT @ 44" 1 EXIT @ 72"	1008.2.1 MAXIMUM OCCUPANT LOAD - 10	B-TABLE 1108.3 10% OF SPACES TO BE ACCESSIBLE.	B-TABLE 1105 60% OF ALL ENTRANCES TO BE ACCESSIBLE	22,500 SF REFER TO PLAN	2012 NFPA 101 18.2.5.7 7,500 SF REFER TO KEY PLANS 12,500 SF REFER TO KEY PLANS	B-1017.2 200' MAX WITH SPRINKLER SYSTEM	B-1020.1 0 HR. MUST RESIST THE PASSAGE OF SMOKE	B-1020.2 GENERAL 44" MINIMUM GROUP 2 WHERE RED MOVEMENT - 96" CORRIDORS SERVING STRETCHER TRAFFIC TO RECEIVE MEDICAL CARE THAT CAUSES THE PATIENT TO BE INCAPABLE OF SELF PRESERVATION - 72"	2012 NFPA 101 18.2.3 CAPACITY OF MEANS OF EGRESS EXIT ACCESS CORRIDORS & CLEAR	75' REFER TO PLANS	B-1020.4 20'	STC 50 35 45 50 32ZF
TOTAL		21,500 SF		TOTAL																			
TOTAL		27,750 SF		TOTAL																			



ISSUED FOR CONSTRUCTION

CONSTRUCTION
DOCUMENTS
2019.08.29

CON #181305



LEVEL 01 CODE COMPLIANCE

Project No.: 004987.21 Checked by:

G0101

© 2019 The Cannon Corporation
All rights reserved. No part of this document may be reproduced, stored in a retrieval system, or transmitted in any form or by any means, electronic, mechanical, photocopying, recording, or by any information storage and retrieval system, without written authorization by The Cannon Corporation.
8/30/2019 9:15:48 AM